

# WILLIAM SHAKESPEARE

WILLIAM  
SHAKESPEARE

# CHAPTER 1



# ACTIVITY

1

Watch the video and answer these questions.



**SCAN  
AND  
WATCH**



**1 Where and when did Shakespeare live?**

---

---

---

**2 What was he famous for?**

---

---

---

**3 What was innovative about his writing style?**

---

---

---

# ACTIVITY

# 2

**Watch the video and answer the following T/F questions.**

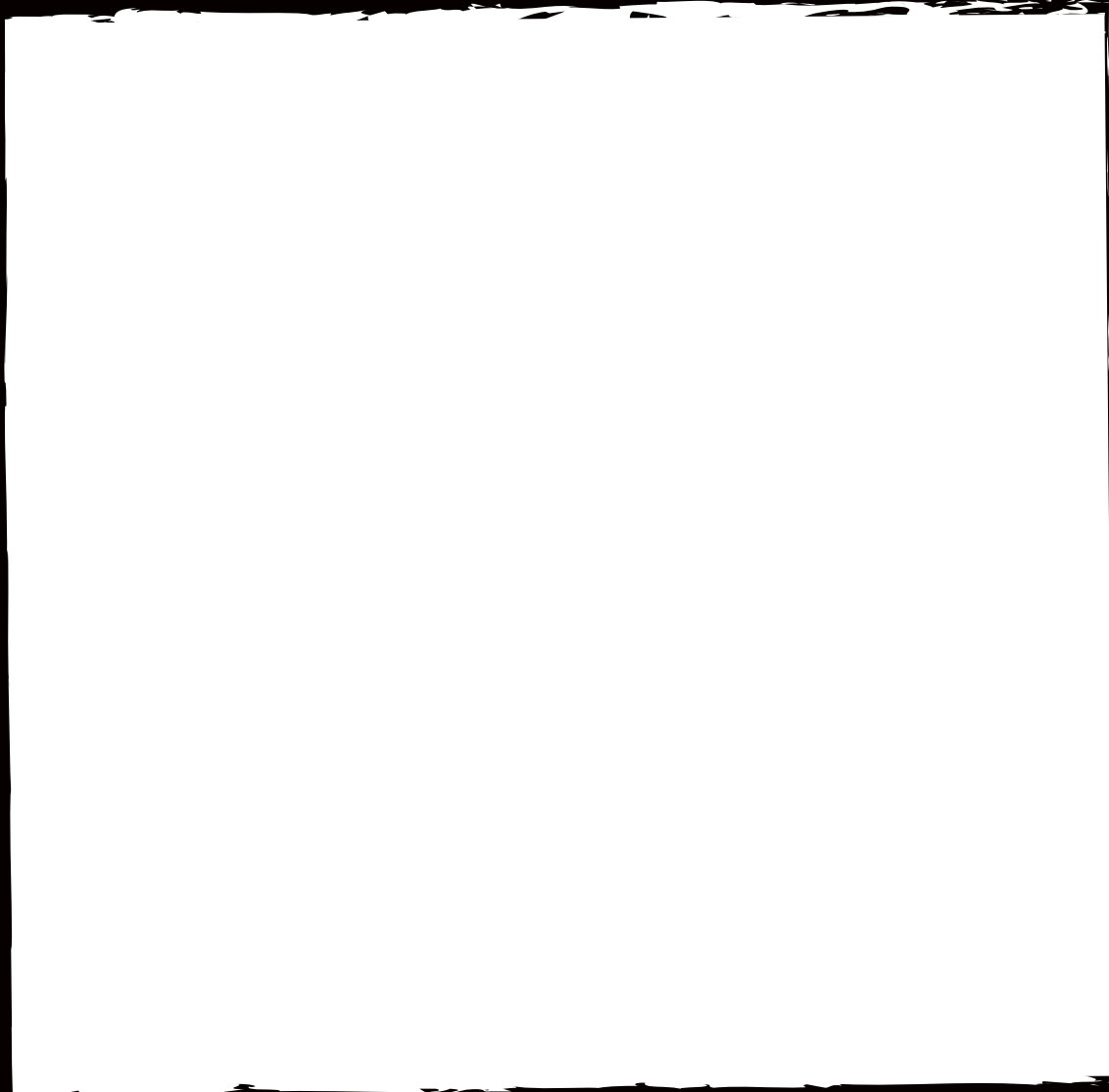


**SCAN  
AND  
WATCH**

- T / F The video is a music video.
- T / F The video is a movie trailer.
- T / F The video is a speech.
- T / F The video is a poem.
- T / F The speaker talks about the seven wonders of the world.
- T / F The speaker talks about the seven ages of man.
- T / F The first age is when the man is a soldier.
- T / F The sixth age is when the man is old and wise.
- T / F The last scene of all is when the man has all his teeth and eyes.
- T / F The video is about a woman's life.

**ACTIVITY****3**

**Now go to Google Maps and find Stratford-upon-Avon. Can you spot Shakespeare's birthplace, school and burial place? Draw a picture of his school as you think it was back then.**





# ACTIVITY

# 5

**Imagine Shakespeare asked for your help in writing a dialogue between Romeo and Juliet. Write it and/or perform it in class.**

**R** \_\_\_\_\_  
\_\_\_\_\_  
\_\_\_\_\_  
\_\_\_\_\_

**R** \_\_\_\_\_  
\_\_\_\_\_  
\_\_\_\_\_  
\_\_\_\_\_

**R** \_\_\_\_\_  
\_\_\_\_\_  
\_\_\_\_\_  
\_\_\_\_\_

**R** \_\_\_\_\_  
\_\_\_\_\_  
\_\_\_\_\_  
\_\_\_\_\_

\_\_\_\_\_ **J**  
\_\_\_\_\_  
\_\_\_\_\_  
\_\_\_\_\_

\_\_\_\_\_ **J**  
\_\_\_\_\_  
\_\_\_\_\_  
\_\_\_\_\_

\_\_\_\_\_ **J**  
\_\_\_\_\_  
\_\_\_\_\_  
\_\_\_\_\_

\_\_\_\_\_ **J**  
\_\_\_\_\_  
\_\_\_\_\_  
\_\_\_\_\_

# ACTIVITY

# 6

**Did you know that Shakespeare has a fool as a recurrent character in all his plays? The fool is not actually a “fool”, but a character that foresees and speaks the truth in riddles. Here’s an example: “The more pity, that fools may not speak wisely about what wise men do foolishly.” What do you think this means?**

---

---

---

---

---

---

---

---

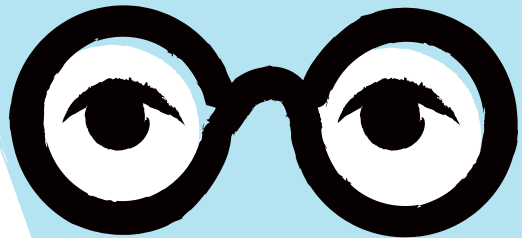
---

---

**Look at the information on this website and write down a quote from one of Shakespeare’s fools that stood out to you and try to describe it.**



**SCAN  
AND  
WATCH**



## ACTIVITY

7

**In pairs, make a poster advertising a Shakespeare's play.**

## ACTIVITY

8

This passage is from *The Tempest*.

Caliban lives on a magical island ruled by Prospero. The island is full of music and beauty, but it is also deceptive: many of its sounds and visions are created by magic and cannot be fully trusted.

ACT 3, Scene 2

CALIBAN

Be not afeard. The isle is full of noises,  
Sounds and sweet airs that give delight and hurt not.  
Sometimes a thousand twangling instruments  
Will hum about mine ears, and sometimes voices  
That, if I then had waked after long sleep,  
Will make me sleep again; and then, in dreaming,  
The clouds methought would open, and show riches  
Ready to drop upon me, that when I waked  
I cried to dream again.

**Can illusion be both meaningful and misleading at the same time? Prepare a short painted essay with your arguments about the issue.**

- 1 If something feels beautiful and meaningful, does it matter whether it is an illusion?
- 2 Is Caliban being protected by dreams or controlled by them?
- 3 Can illusion ever be a form of truth?



# ACTIVITY

# 9

Sonnet 18:

Shall I compare thee to a summer's day?

BY WILLIAM SHAKESPEARE

Shall I compare thee to a summer's day?  
Thou art more lovely and more temperate:  
Rough winds do shake the darling buds of May,  
And summer's lease hath all too short a date;  
Sometime too hot the eye of heaven shines,  
And often is his gold complexion dimm'd;  
And every fair from fair sometime declines,  
By chance or nature's changing course untrimm'd;  
But thy eternal summer shall not fade,  
Nor lose possession of that fair thou ow'st;  
Nor shall death brag thou wander'st in his shade,  
When in eternal lines to time thou grow'st:  
So long as men can breathe or eyes can see,  
So long lives this, and this gives life to thee.

Shakespeare's sonnets follow a very regular beat, almost like a heartbeat or music. This rhythm is called iambic pentameter.

## What does that mean?

**- Iambic = a pattern of soft + strong beats (da-DUM)**

**- Pentameter = five of these beats in one line**

**So each line usually sounds like this:**

**da-DUM da-DUM da-DUM da-DUM da-DUM**

**That's about 10 syllables per line.**

**Now try to read Shall I compare thee to a summer's day by stressing the iambic pentameter rhythm.**

**example:**

**shall I | comPARE | thee TO | a SUM | mer's DAY**

