

# 1525 N. MILWAUKEE AVENUE

## WICKER PARK, CHICAGO IL



# WICKER PARK

Small shop retail opportunity for immediately delivery, formerly occupied by G-Star Raw

2,346 SF space features 25' of frontage plus a full lower level for storage

Near the Damen Blue Line 'L' Stop with more than 2.1M riders annually

Within walking distance of The 606, Chicago's High Line trail

Surrounded by a unique mix of international, national and local retailers



MARKET AND SPACE DETAILS



MILWAUKEE AVENUE

JOIN THE NEIGHBORHOOD

## APPAREL & ACCESSORIES



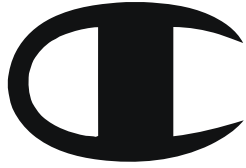
## BEAUTY & COSMETICS

Aēsop benefit bluemercury

## FOOD & BEVERAGE

bartaco **BIGSTAR** jeni's et

RIES



non  
ca



VIZ WALLACE  
NEW YORK

RAINS

ne

URBAN  
OUTFITTERS

WARBY  
PARKER

YETI®

CS

credo



FACE FOUNDRIÉ®

LUSH  
FRESH HANDMADE COSMETICS

ta



SMALL *Cheval* Stan's Donuts  
& COFFEE

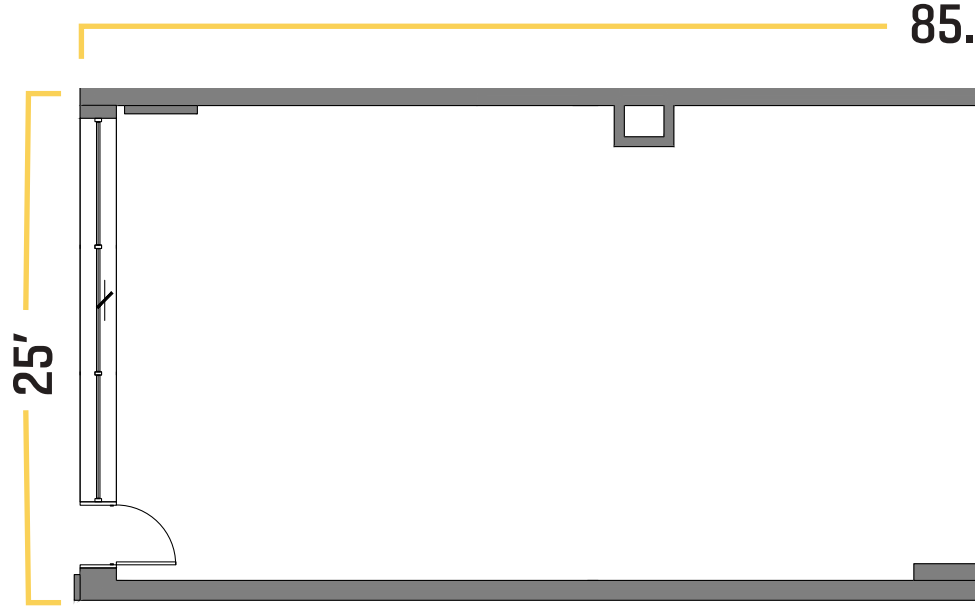
TACOMBI

MILWAUKEE AVENUE

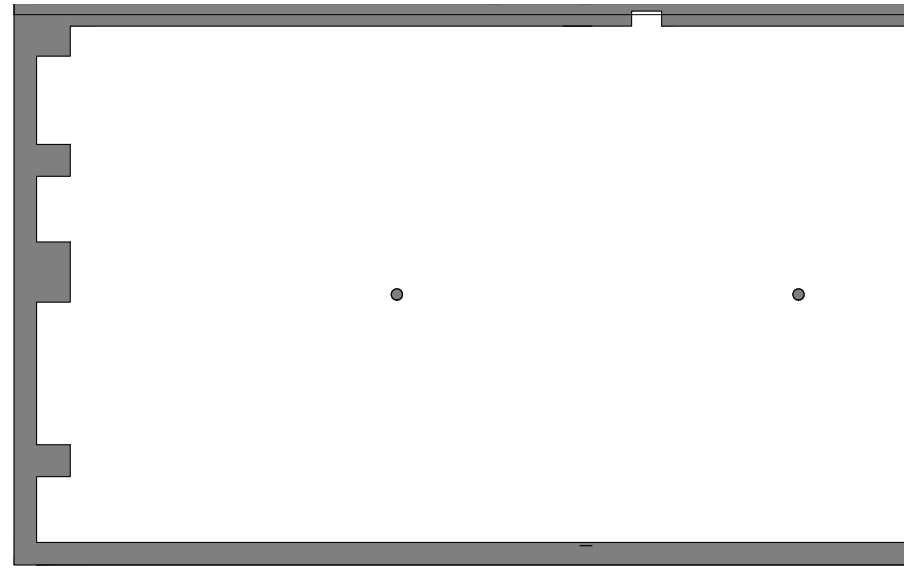
# 1525 N MILWAUKEE AVENUE

# FLOOR PLAN

N MILWAUKEE AVE

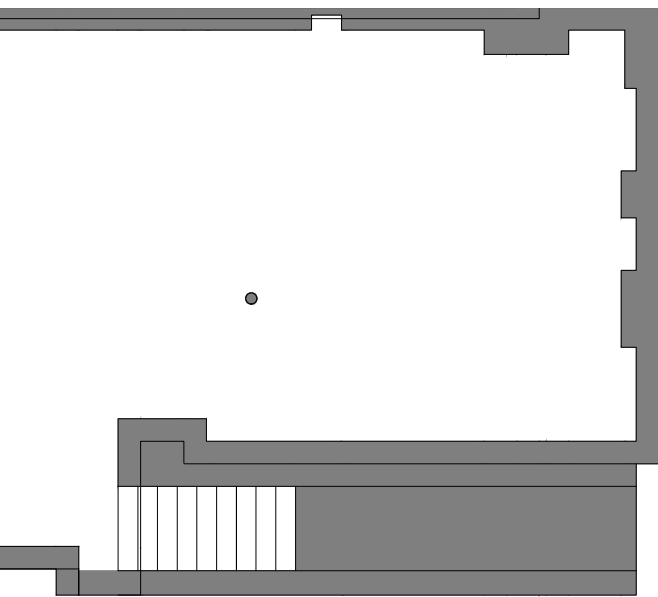
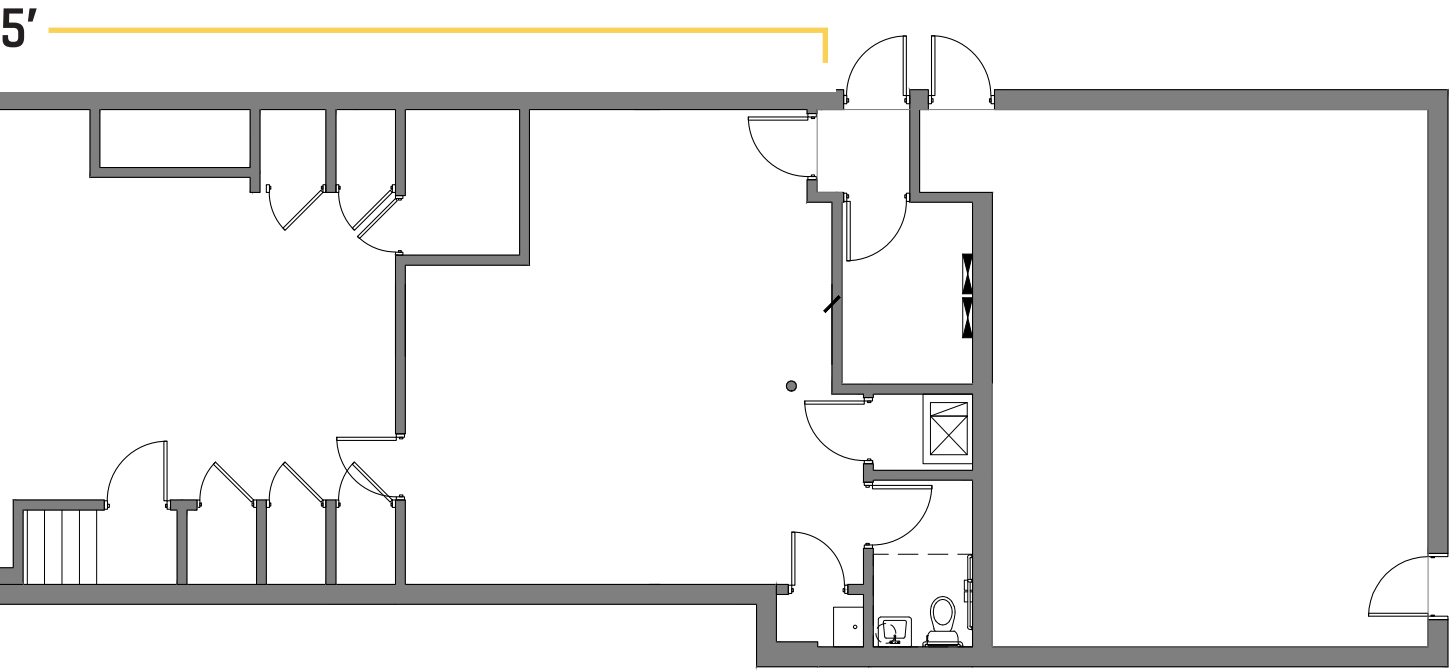


GROUND FLOOR



LOWER LEVEL

AN



**GROUND FLOOR – 2,346 SF**  
**LOWER LEVEL – 1,608 SF**



MILWAUKEE AVENUE

# MARKET MAP



WABANSIA AVE

**Children's**  
LEARNING PLACE

N MILWAUKEE AVE

**KRISER'S**  
NATURAL PET  
UPS STORE

**7-ELEVEN**  
verizon

FUTURE  
HOGSALT  
RESTAURANT

**TREK**

SUSHI PARA

DENTOLOGIE  
MINDY'S

**LE LABO**

THE  
**ROBIEY**  
CHICAGO

BUCKTOWN  
**BAC**  
ATHLETIC CLUB

NORTH AVE

**54**  
**11**

HOYNE AVE

**CHOP**  
SHOP

WICKER PET  
TAPSTER

SUBTERANEAN

★  
R  
FLASH  
TACO  
BULL DOG  
BLAZE SHOP

DAMEN BLUE LINE 'L' STOP  
2.1M RIDERS ANNUALLY

Stan's Donuts  
& COFFEE  
**cta**

La **COLOMBE**  
COFFEE ROASTERS

BLUE LINE LOUNGE  
URBANBELLY

PIERCE AVE

Loi Mahatzi  
PIZZERIA  
ME  
Massage Envy

guidepost  
19  
montessori

**VIOLETHOUR**

Midwest  
Express Clinic

LE MOYNE ST

DAMEN AVE

credo  
RAINS  
Aesop  
Godless  
BIG CITY  
OPTICAL  
BIG BUD  
PRESS  
bartaco

**LaserAway**

bluemercury  
BondVet  
lululemon  
athletica  
POTBELLY  
LABORIE LOUIS  
SHINOLA  
DETROIT

ENSO  
timos

WARBY PARKER  
**CHASE**

WINCHESTER AVE

WELLS  
FARGO

DEBONAIR SOCIAL CLUB  
MUSIC, FOOD, ART, ROMANCE, DANCING

FOKTROT  
DELIVERY MARKET

**YETI**

REVEL ROOM -  
BRU -  
TAXIM -

**BURTON**

Dr. Air-Matic  
**Martiens**

BLOOM  
PLANT BASED KITCHEN  
WANN  
JO

DOVE'S

**Levi's**

**BIGSTAR**

free people  
MOVEMENT  
adidas  
U

WICKER PARK AVE

WICKER PARK





## .5 MILE

AVERAGE HH INCOME: \$172,822

TOTAL POPULATION: 18,111

DAYTIME POPULATION: 18,282

## 1 MILE

AVERAGE HH INCOME: \$145,069

TOTAL POPULATION: 62,464

DAYTIME POPULATION: 60,914

## 1.5 MILE

AVERAGE HH INCOME: \$136,940

TOTAL POPULATION: 128,173

DAYTIME POPULATION: 130,457



MILWAUKEE AVENUE

**1525 N. MILWAUKEE AVENUE**

**WICKER PARK, CHICAGO IL**

**KELLY NICKELE**

MID-AMERICA REAL ESTATE CORP.  
KNICKELE@MIDAMERICAGRP.COM  
630.954.7513

**LARA KEENE**

MID-AMERICA REAL ESTATE CORP.  
LKEENE@MIDAMERICAGRP.COM  
630.481.4038

**PAUL BRYANT**

MID-AMERICA REAL ESTATE CORP.  
PBRYANT@MIDAMERICAGRP.COM  
630.954.7354

**GREG BAYER**

MID-AMERICA REAL ESTATE CORP.  
GBAYER@MIDAMERICAGRP.COM  
630.954.7441

**CONTACT US**

 **Newcastle**  
INVESTORS

 **MID-AMERICA® URBAN**