



iCHECK Implant Stability Meter



iCHECK Implant Stability Meter

A more accurate and convenient measurement instrument for detecting implant stability

RAPID DETECTION



Convenient to use

Intelligent security

easy to operate

Methods for measuring implant stability



Comparison of methods for measuring implant stability



torque wrench

for implant placement only
Cumbersome to manipulate,
it may adversely affect
osseointegration



resonance frequency analysis

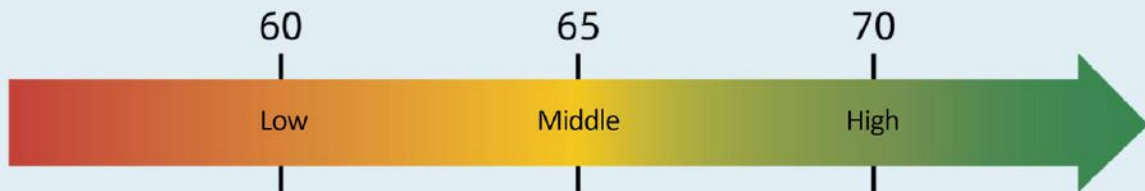
The equipment is costly to use,
measurements are cumbersome,
and it can not be used after the
prosthetic restoration is placed



damping micromotion analysis

The product features simple
operation, precise measurements,
and intelligent protective
programs

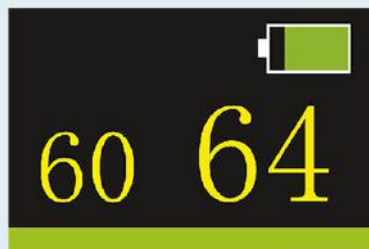
Product Features



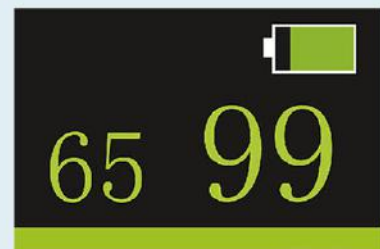
The product utilizes a tricolor display.
 The numerical values transition from red to green,
 indicating a gradual increase in stability



reading in red 01~59
 insufficient stability

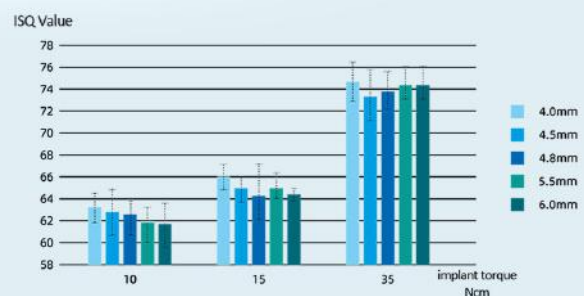
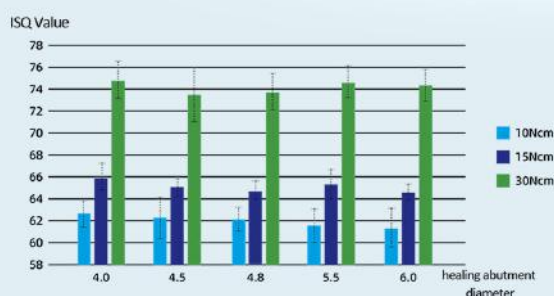


reading in yellow 60~59
 stability is subject to
 observation

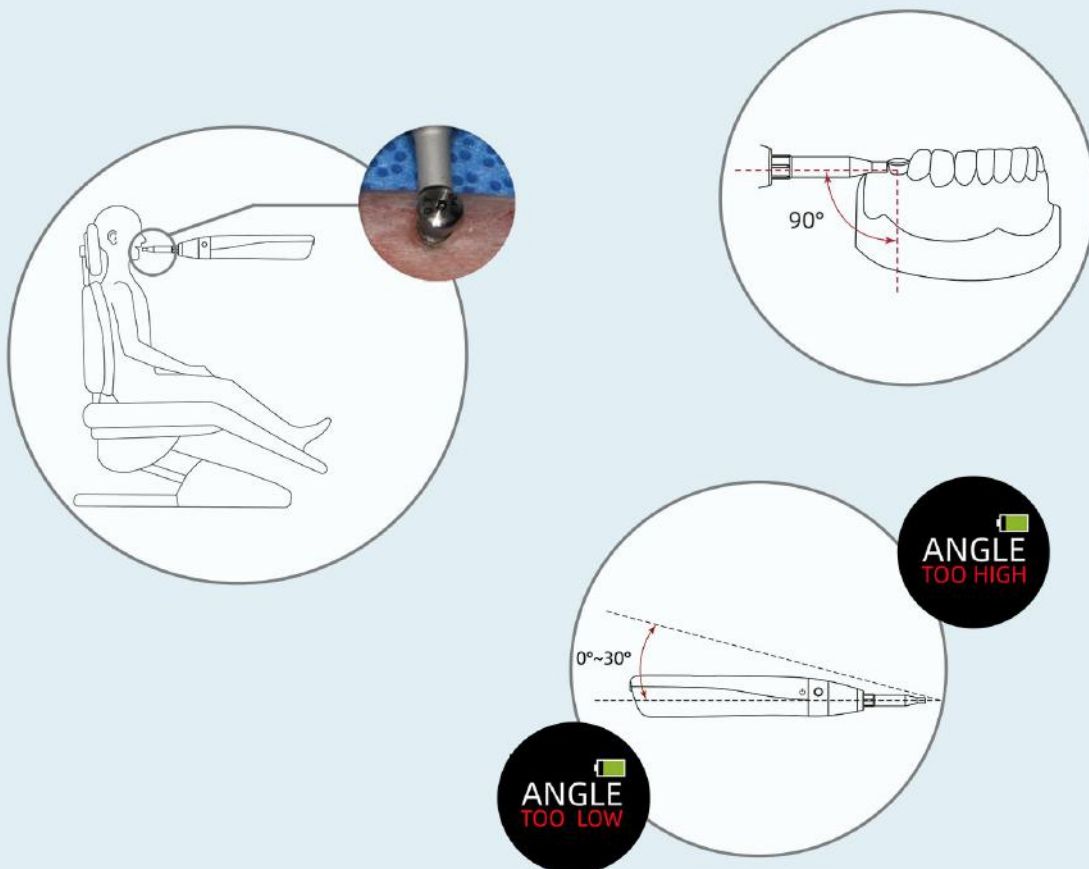


reading in green 65~99
 Stability meets standards

Experimental data



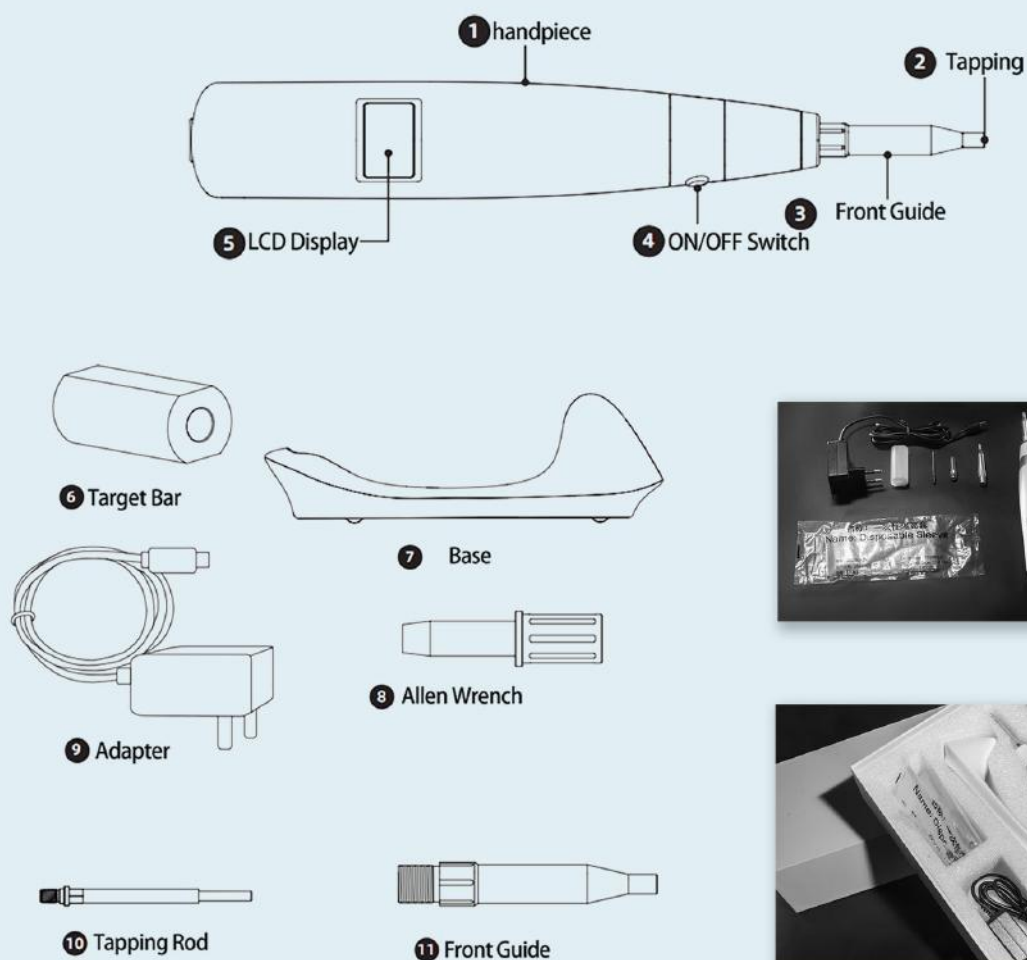
Using the Device



Keep the host as close to the horizontal line as possible,
within 0 to 30 degrees

Conduct the test twice, once on the buccal side and once on the lingual side. If the difference between the two measurements is less than 5, take the value from the first measurement. If the difference is greater than 5, attempt a third measurement

Accessories Parameters



Technical Specifications

Accuracy : Display value ± 3

Tapping Speed : 0.5 sec/ 1 time

Tapping Strength: ≤ 1.0 N

Number of Tapping : Taps 2~4 times until the measured value of 1~59. After 60 ~ 99, the device taps 6 times in order to measure the stability.





iD1 Implant Locator





Ultra-long
standby



Free
rotation



One-click
operation

Convenient to use

Rapid localization

The position of the buried implant can be determined in 3 steps



Approach



Move away



Positioning

Move the sensor towards the estimated position of the implant. When approaching, the green ring stays lit. After passing the position of the implant, the indicator light turns yellow. When the position of the implant is confirmed, the central green light remains lit.

IMPLANTLOCATOR iD1

Quick positioning
minimally invasive treatment
convenient to use

Accurately detect the position
of the implant-abutment screw
covered by the gum tissue.





Minimally invasive therapy

Minimally invasive

Accurate positioning of implant sites, enabling minimally invasive surgery with small incisions, minimal bleeding, almost no need for sutures, fast healing, and high patient comfort experience.



Traditional

The implant site is difficult to locate, requiring a large flap elevation resulting in a large wound, which may lead to complications postoperatively. The healing period is prolonged, and the patient experiences poor comfort.



iT3 Dental Implant Torque Wrench

EASY TO OPERATE, CONVENIENT TO USE

One-handed Operation

Rapid Treatment

Stable and accurate




CW and CCW mode

Press the Main switch to turn device on.



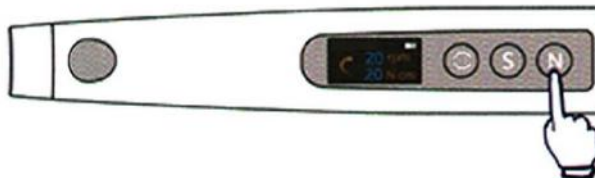
Press the S button to change Speed setting.



Press the  button to change Motion setting.



Press the N button to change Torque setting.



Press the Main switch to start / stop motor during standby mode.



Forward to Implant



Reverse to Implant

Technical Data

Power supply : ICR18500, 3.7V 1900mAh $\pm 10\%$

Charger power supply : 5VA

Degree of Protection : IPX 0

Electrical safety class : Class II

Applied part : B

Torque range : 10-50N • cm

Speed range : 10-50rpm

Contra Angle : Ratio: 20:1

Operation: Forward(Clockwise rotation), Reverse(Counter clockwise rotation)

Operating conditions Use: in enclosed spaces

Ambient temperature: 5 ° C ~ 40 ° C

Relative humidity: <80%

Operating altitude < 2000m above sea level

Atmospheric pressure: 70kPa ~ 106kPa

Transport and storage conditions : Ambient temperature: -20 ° C ~ +55 ° C

Relative humidity: 20% ~ 80 %

Atmospheric pressure: 70kPa ~ 106kPa

16 types of screwdrivers





Warranty Ke Saath Bhi Warranty Ke Baad Bhi

For any Sales & Support

 9821184441, 8448398852

 sales@unicornndenmart.com



SCAN TO VISIT OUR WEBSITE



Corporate Office: 3 Local Shopping Centre, MOR Land, Near J Block
DDA Market, New Rajender Nagar, New Delhi – 110060

     /unicornndenmart

* Accessories shown may not be a part of standard equipment. Specifications are subject to change without notice.