



CATALOGUE

EQUIPMENT
MANAGEMENT
INSPECTIONS

PROMOTING BEST PRACTICE
WITH OUR WORKPLACE CHECKS



INTRODUCTION

Good to Go Safety is a multi-award winning system which enables companies to increase safety, lower equipment maintenance costs and take control of their workplace equipment by carrying out checks in line with health and safety policies and regulations.

Preventative maintenance and management can bring the following benefits:

- a reduction in injuries and the resulting financial and personal costs;
- lower risk of breakdowns and equipment downtime which improves business efficiencies;
- longer life for equipment and machinery;
- reduced costs resulting from repairing minor faults before they worsen and become more costly;
- less chance of enforcement action and the cost of dealing with an incident and /or fines;
- reduced risk of damage to the reputation of the business;
- improved productivity, good morale and a happier, healthier workforce;

CONTENTS






INDUSTRY SECTORS	3-18
Transport & Logistics Industry	5-8
Farming & Agriculture	9-10
Construction Industry	11-14
Factories & Warehouses	15-18

PRODUCTS	19-24
Universal Status Tag	19
Inspection Checklists & Kits	20-22
Posters	23
Inspection Stations	24
Accessories	25-26

CONTACT US

T 01592 655646
W www.goodtogosafety.co.uk
E social@goodtogosafety.co.uk

FOLLOW US

 [goodtogosafety](#)
 [gtgtakeaim](#)
 [goodtogosafety](#)
 [goodtogosafety](#)
 [good-to-go-safety](#)

TRANSPORT & LOGISTICS

Knowing a vehicle is faulty or unsafe to drive, but driving it anyway is seen as "Dangerous driving". Common vehicle faults are: driving whilst it has no screen wash / smeared windows, faulty lights, worn tyres etc.

If an employee drives a defective vehicle whilst on company business the employer could face criminal or civil action. Completing pre-drive walk around checks helps mitigate against this.



Shipping, Distribution, Port, Terminal, Freight, Docks, Forestry, Fishing, Logging, Fisheries, Harvesting

FARMING & AGRICULTURE

In the last decade, nearly one person has been killed every week as a direct result of agricultural work. Many more have been seriously injured making it one of the most dangerous industries in which to work.

Health and Safety is a fundamental requirement in any farming business and must be regarded as an essential part of maintenance and management programmes. Assuming equipment is safe is a common problem in the industry.





CONSTRUCTION SITES

The accident fatality rate of the construction industry stands at more than double of all other industry sectors.

Accidents occur every day in the construction industry due to the varying nature of activities and equipment being used. Risks from falls at height, heavy equipment, moving vehicles etc are commonplace.

Help your construction site become safer, healthier and stronger by using our range of preventative maintenance management products.



FACTORIES & WAREHOUSES

Accidents occur every day in warehouses and factories, so much so that around 1,300 UK employees are hospitalised each year with serious injuries as a result.

Incidents involving racking collapses often happen due to collisions and unseen damage which weakens the racking's structural integrity.

By regularly inspecting equipment you reduce potential dangers by identifying issues quickly and help to prevent costly accidents.

TRANSPORT & **LOGISTICS**

Crashes and breakdowns are a common problem on UK roads, many of which are easily avoidable. It is vital that vehicles such as Cars, Vans, Tractors and Trailers are checked prior to use for any faulty components that might cause an incident to occur.

Whenever an employee is required to drive a vehicle (as part of a fleet, or even if it's their own vehicle or a hired vehicle), safety inspections must be carried out. Records of these checks must be retained for verification. Responsible employers are aware of their duty of care to employees and those that may be affected, and will manage their equipment effectively, implementing appropriate preventative maintenance inspections in order to reduce costs and accidents.



TRANSPORT & LOGISTICS



VEHICLES

The Road Safety Task Group estimates that up to a 1/3 of all traffic accidents involve someone who is at work at the time.

Road deaths and serious injuries in the UK, through 2021 alone accounted for 1,608 deaths and 26,701 serious injuries according to Brake, so any steps that can be taken to help reduce those statistics should be given serious consideration.



TRAILERS

The National Towing and Trailer Association provided data from 307 inspections they conducted at certified servicing centres between 2017 and 2018.

The finding showed that 89% of trailers tested, failed their inspections with one or more defects recorded.



TRACTORS

The average fatality rate in the farming industry is around 21 times higher than all other industry rates.

The HSE (Health and Safety Executive) guide to using tractors safely highlights the need for regular maintenance as an important safety element.



LOADER CRANES

Over the past few years there have been a significant number of accidents involving the use of lorry loaders, which have tragically ended with fatalities.

All lifting machines will wear and tear over time. The maintenance process, including checks and inspections, will both monitor, prevent and help rectify this deterioration.



STRADDLE CARRIERS

Straddle Carriers can be subjected to immense forces. Components such as hoists and cables will see unavoidable wear and tear over time; especially when exposed to adverse weather conditions. Equipment failure can have very serious consequences not just for the load, but also for any plant, building structures or personnel in the surrounding area.



OVERHEAD CRANES

There are strict legal requirements concerning the thorough examination of all cranes: Lifting equipment must be thoroughly examined every 12 months.

It is important however not to rely solely on this one snapshot in time; companies should also complete regular visual checks throughout the year to ensure cranes remain safe.



TOW TRACTORS

Industrial tow trucks account for numerous accidents in factories and warehouses. Many of these accidents are due to operator error associated with inadequate or lack of training. Other reasons may include unsuitable premises (poor layout and design of towing operating areas) and poor truck maintenance.



FORKLIFTS

Every year there are serious injuries and fatalities caused by forklift trucks.

At the beginning of each shift, drivers should check forklifts in accordance with the handbook and document the results. They should report to the supervisor any defects which might affect its safe operation to ensure they are put right.

FARMING & AGRICULTURE

Health and Safety is a fundamental requirement in any farming business and maintenance and management of farming machinery and equipment is essential to safe and efficient operations. Assuming equipment is safe to use is a common problem in the industry, leading to catastrophic consequences. With high numbers and rates of fatal injury, farming, forestry and agricultural work is one of the most dangerous industry sectors.

Surveys suggest that only 16% of serious injuries are actually reported within the farming and agricultural sector. The HSE estimates that there could be as many as 10,000 unreported injuries in the industry each year.

Workers have the right to leave work without injury, returning home to their family each night safe and sound. Good workers and business owners understand the benefits of reducing incidents and maintenance costs, and recognise the need and desire to maintain high standards of Health and Safety.



TRACTOR

The average fatality rate in the farming industry is around 21 times higher than all other industry rates.

The HSE (Health and Safety Executive) guide to using tractors safely highlights the need for regular maintenance as an important safety element.



TELEHANDLER

The unsafe use of Telehandlers has led to a significant number of serious accidents, tragically including some fatalities.

It is important that the use of telehandlers is subject to regular review and constant monitoring to ensure that equipment and tasks are being carried out / used safely.



EXCAVATOR

Maintenance inspections of excavators will help prevent break downs and lost valuable work time that could have been avoided.

Excavator safety inspections can be used in conjunction with the manual to help comply with PUWER, LOLER, CDM, and HSE legislation and best practice.



FRONT LOADER

In the past five years there have been 36 deaths in construction and 9 fatalities in the recycling sector involving front loader buckets.

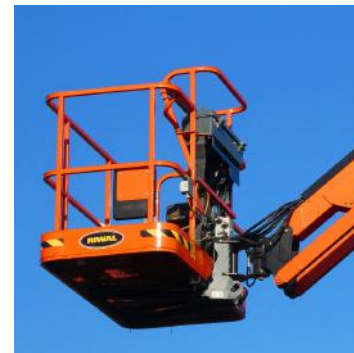
PUWER requires machinery to be suitable for the purpose it is used for. The effective maintenance of a front loader is an essential part of safe operation.



TRAILER

The National Towing and Trailer Association provided data from 307 inspections they conducted at certified servicing centres between 2017 and 2018.

The finding showed that 89% of trailers tested, failed their inspections with one or more defects recorded.



MEWP

Over the past 10 years there have been 39 deaths due to mechanical or technical MEWP failures alone.

One way to reduce the risk of such a failure is to carry out regular inspections of the equipment by qualified personnel before each use.

CONSTRUCTION **INDUSTRY**

Two fifths of people in the construction industry believe an accident is “inevitable” on their sites, research has revealed. The study also showed almost half of respondents believed their boss could have done more to improve construction site safety and 41% said they have been made to work in unsafe conditions before. The research, carried out by legal services company Slater and Gordon, surveyed 500 people in physical construction jobs across the UK - it also revealed 40% of construction workers sometimes feel unsafe at work and 78% of respondents had been involved in an accident in the workplace.

Accidents are commonplace in the industry due to the ever-changing nature of activities undertaken and equipment being used on site. Risks associated with: slips, trips and falls from height, use of heavy plant and equipment; and moving equipment/vehicles are amongst the most likely causes of accidents. Ensuring equipment is in good condition and safe to use are a simple but effective solution towards improving safety and efficiencies, whilst reducing downtime and costs in the process.



CONSTRUCTION **INDUSTRY**



EXCAVATOR

Maintenance inspections of excavators will help prevent break downs and lost valuable work time that could have been avoided.

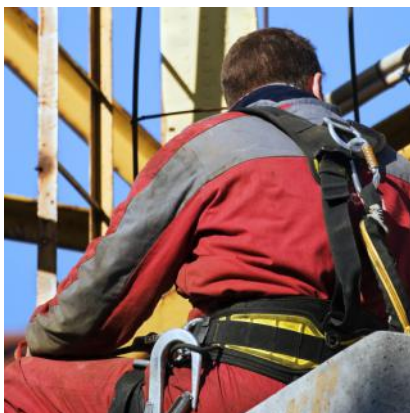
Excavator safety inspections can be used in conjunction with the manual to help comply with PUWER, LOLER, CDM and HSE legislation and best practice.



SCAFFOLDING

It is the scaffold users' / hirers' responsibility to ensure that it has been inspected as follows:

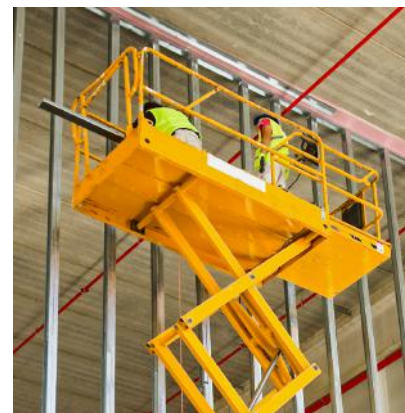
- After installation / before first use.
- At least every 7 days thereafter.
- Following any circumstances liable to jeopardise the safety of the installation e.g. severe weather conditions.



HARNESSES

Inspection of work equipment & PPE plays a vital role in protecting the safety of the technicians who use it.

It is important in ensuring the continued safety of those using work at height equipment. Correct and thorough inspection also ensures that organisations are compliant and not left open to litigation.



MEWP

Over the past 10 years there have been 39 deaths due to mechanical or technical MEWP failures alone.

A way to reduce such as failure is to carry out regular inspections of the equipment by qualified and competent / trained personnel.



DUMPER TRUCKS

Site dumpers are involved in around a third of construction transport accidents, causing many deaths and serious injuries, particularly to the drivers.

Both the user and owner of the dumper have a responsibility to ensure that they are maintained in a safe working condition.



FRONT LOADERS

In the past five years there have been 36 deaths in construction and 9 fatalities in the recycling sector involving front loader buckets.

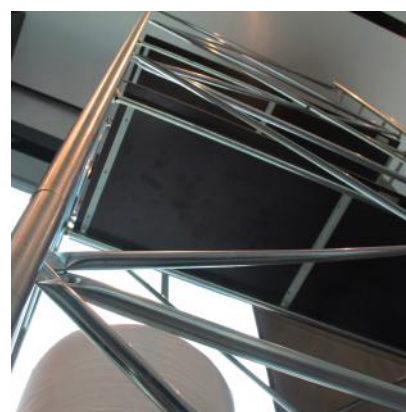
PUWER requires machinery to be suitable for the purpose it is used for. The effective maintenance of a front loader is an essential part of safe operation.



TELEHANDLER

The unsafe use of Telehandlers has led to a significant number of serious accidents, tragically including some fatalities.

It is important that the use of telehandlers is subject to regular review and constant monitoring to ensure that equipment and tasks are being carried out and used safely.



SCAFFOLD TOWER

14 people suffered a non-fatal fall in 2019/20, according to RIDDOR.

Scaffold towers must be properly managed and include rigorous scaffold tower inspections.

All towers must be inspected following assembly and then at least every 7 days thereafter.

FACTORIES & **WAREHOUSES**

Accidents occur every day in warehouses and factories. Around 1,300 UK employees are hospitalised each year with serious injuries as a result of warehouse accidents.

Forklift and pallet truck accidents are a common problem within warehouses, often causing serious injury and in some cases, fatalities. It is vital that vehicles such as forklifts, MEWPS and pallet trucks are checked prior to use for any faulty components that might cause an incident to occur. Whenever an employee is required to use workplace equipment (such as Ladders, MEWPS, Racking, Forklifts etc), safety inspections must be carried out. Records of these checks should be maintained for verification. Responsible employers are aware of their duty of care to employees and will manage their warehouse effectively, implementing appropriate preventative maintenance inspections in order to reduce costs and accidents whilst improving efficiencies by ensuring equipment runs smoothly at all times.



FACTORIES & WAREHOUSES



FORKLIFTS

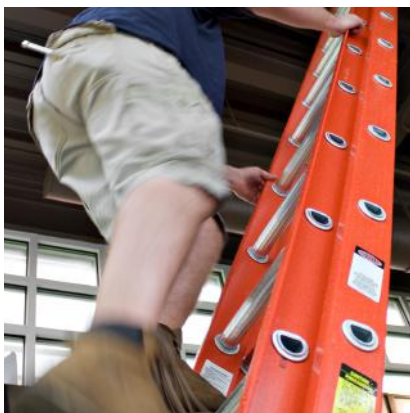
Every year there are serious injuries and fatalities caused by forklift trucks.

At the beginning of each shift, drivers should check forklifts in accordance with the handbook and document the results. They should report to the supervisor any defects which might affect its safe operation to ensure they are put right.



RACKING

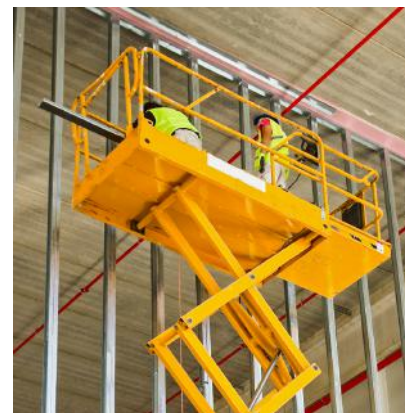
Racks do not collapse over a lengthy period; once failure occurs the collapse is instantaneous and the vast weight of goods falling from height can have a devastating impact. A racking collapse can cause damage to stock, bring a business to a halt, and pose a threat of serious injury..



LADDERS

Accounting for around a quarter of all worker deaths and 8% of all non-fatal injuries every year, falling from height (many involving a fall off a ladder) remains the main cause of work death.

You should always carry out a 'pre-use' check to help spot any obvious visual defects and to ensure the ladder is safe to use.



MEWPS

Over the past 10 years there have been 39 deaths due to mechanical or technical MEWP failures alone.

One way to reduce the risk of such a failure is to carry out regular inspections of the equipment by qualified personnel before each use.



PALLET TRUCKS

Many managers and operators don't generally consider pallet trucks to be a potential hazard however businesses shouldn't treat these pieces of equipment as harmless.

They may be less complex, but when used incorrectly, operators often experience bruises, fractured lower limbs and musculoskeletal injuries.



TOW TRACTORS

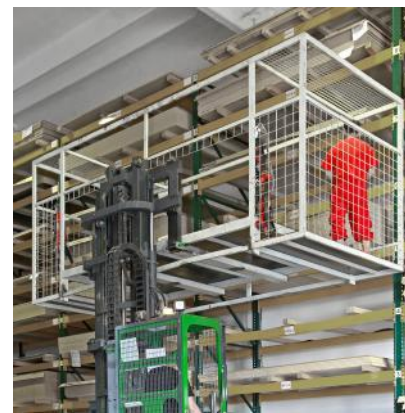
Industrial tow trucks account for numerous accidents in factories and warehouses. Many of these accidents are due to operator error associated with inadequate or lack of training. Other reasons may include unsuitable premises (poor layout and design of towing operating areas) and poor truck maintenance.



PODIUM STEPS

Podium steps are considered a safer way to work at low-level heights as they provide guard rails and ensure the user is enclosed and secure on a platform.

They should however continue to be inspected to comply with PUWER and to ensure they are safe for use.



WORK PLATFORMS

A substantial number of serious accidents occur when people are lifted on pallet stillages placed on the forks of forklift trucks.

When deciding to use a non-integrated working platform or an integrated working platform, employers must follow all the relevant requirements of PUWER to ensure user safety.

UNIVERSAL STATUS TAG

Designed by experts in the equipment inspection field, our Universal Status Tag attaches to all types of workplace equipment - the universal "one size fits all" design eliminates the need for multiple tags, that can cause confusion and clutter.

Our status tag has been manufactured from tough, durable polypropylene making it strong whilst flexible enough to withstand the toughest of environments. It has the ability to be riveted, screwed, nailed, cable tied or simply glued to any piece of equipment and the channelled back ensures it will sit flush to poles, handles and tubes. Cable ties are the most common choice for attachment and slide through the recesses at the rear, from the inside of the tag.

When secured to a piece of equipment (usually at the point of entry) it displays a "Do Not Use" message until an inspection has been completed and the paper checklist placed inside to display the status and date of inspection.



CHECK BOOKS

An innovative tool for workplace equipment which allows workers to carry out pre-use checks and spot potential faults before they develop into a more serious and costly defect. These safety check books are designed to help improve safety, reduce maintenance costs and ensure compliance with legal responsibilities.

The Provision and Use of Work Equipment Regulations 1998 (PUWER) apply to a multitude of workplace equipment.

With such an extensive range of varying types of equipment it is impossible to provide checklists for every eventuality. The fundamentals of PUWER state that equipment is suitable and safe for use; maintained in a safe condition and, in certain circumstances, inspected to ensure this remains the case; used by people who have received adequate information, instruction and training.

Each book contains 25 checklists specific to the choice of equipment and includes guidance notes on what to look for during an inspection.

Once an inspection is completed the checklist can be displayed inside the status tag whilst a duplicate copy is retained inside the book for management records.



AVAILABLE FOR:

- Dumper Trucks
- Forklifts
- Ladder
- Overhead Cranes
- Racking
- Telehandlers
- Vehicles
- Excavators
- Front Loader
- Loader Crane
- Pallet Trucks
- Scaffold Towers
- Tow Tractors
- Bespoke
- Fixed Scaffolding
- Harnesses
- MEWPs
- Podium Steps
- Straddle Carriers
- Trailers

WEEKLY KIT

Our range of Weekly Inspection Kits provide you with the perfect solution for workplace equipment that might require a weekly safety inspection to be carried out by your maintenance team. The kit contains everything you need for a year's worth of weekly inspections for one piece of equipment and includes all of the integral components of the Good to Go Safety equipment maintenance systems. The kit includes one status tag to attach to the equipment needing inspected; two check books providing a total of 50 individual checklists with content specific to your choice of equipment type; one wallet and pen for storing the current check book; 100 tamper evident seals.



AVAILABLE FOR:

- Dumper Trucks
- Forklifts
- Ladder
- Overhead Cranes
- Racking
- Telehandlers
- Vehicles
- Excavators
- Front Loader
- Loader Crane
- Pallet Trucks
- Scaffold Towers
- Tow Tractors
- Bespoke
- Fixed Scaffolding
- Harnesses
- MEWPs
- Podium Steps
- Straddle Carriers
- Trailers



DAILY KIT

Our range of Daily Inspection Kits provide you with the perfect solution for workplace equipment that might require a daily safety inspection to be carried out by your maintenance team. The kit contains everything you need for a year's worth of daily inspections for one piece of equipment (based on a 5-day working week) and includes all of the integral components of the Good to Go Safety equipment maintenance systems. The kit includes two status tags to attach to the equipment needing inspected (plus a spare); eleven check books providing a total of 275 individual checklists with content specific to your choice of equipment type; one wallet and pen for storing the current check book; 300 tamper evident seals.

AVAILABLE FOR:

- Dumper Trucks
- Forklifts
- Ladder
- Overhead Cranes
- Racking
- Telehandlers
- Vehicles
- Excavators
- Front Loader
- Loader Crane
- Pallet Trucks
- Scaffold Towers
- Tow Tractors
- Bespoke
- Fixed Scaffolding
- Harnesses
- MEWPs
- Podium Steps
- Straddle Carriers
- Trailers

CARRY OUT PRE-USE CHECKS

DUMPER TRUCKS



The UK construction industry has seen an average of 36 fatalities each year to workers over the past five years.

Dumper trucks are involved in around a third of construction transport accidents, causing many deaths and injuries, particularly to the drivers.

The effective maintenance of a dumper is an essential part of safe operation. As with all machines a tipper truck wears, deteriorates and can suffer damage over time. Maintenance, (including checks and inspections) monitors, prevents and rectifies this deterioration.



- | | |
|------------------------------------------------------------------------------------------------------------------------------------------------------------------------------------------------------------------------------------------------------------------------------------------------------------------------------------------------------------------------------------------------------------------------------------------------------------------------------------------------------------------------------------------------------------------------------------------------------------------------------------------------------------------------------------------------------------------------------------------------------------------------------------------------------------------------------------------------------------------------------------------------------------------------------------------------------------------------------------------------------------------------------------|-----------------------------------------------------------------------------------------------------------------------------------------------------------------------------------------------------------------------------------------------------------------------------------------------------------------------------------------------------------------------------------------------------------------------------------------------------------------------------------------------------------------------------------------------------------------------------------------------------------------------------------------------------------------------------------------------------------------------------------------------------------------------------------------------------------------------------------------------------------------------------------------------------------------------------------------------------------------------------------------------------------------|
| <p>1 Decals & Paperwork Handbook available, operator licensed, insurance & tax in date.</p> <p>2 General Condition No excessive damage, rust, leaks or missing components.</p> <p>3 Wheels & Tyres Check pressure, nuts, no excessive wear, debris or defects.</p> <p>4 Hydraulics Hoses, pipes, rams, pins, locks, hoses and cylinders free from excessive wear.</p> <p>5 ROPS / FOPS Fitted securely and free of damage.</p> <p>6 Visibility & Safety Horn, cameras, lights & indicators clean and functioning properly. Windows, wipers & mirrors undamaged. PPE, fire suppression, first aid available and in date.</p> <p>7 Fluids / Fuel Clutch & brake fluid, engine, transmission & hydraulic oil levels at correct levels. Adequate water / coolant levels. Fuel tank full. No sign of leaks or damage. Top up if required.</p> <p>8 Battery Secure and free from corrosion, electrolyte levels topped up. All filters clean.</p> | <p>9 Hoses & Belts Free from wear/tears & delamination. Fan belt set to appropriate tension.</p> <p>10 Radiator Free from debris and with adequate water levels; No blockage / leaks.</p> <p>11 Engine Free from trash or dirt. Doors lock securely. Check dipsticks & sight gauges.</p> <p>12 Brakes Parking and foot brakes functioning correctly.</p> <p>13 Seat Adjustment working smoothly, secure mounting & belt free of damage.</p> <p>14 Instruments / Gauges All labelled and functioning - includes steering, parking brakes, hydraulics, transmission, air, electrical & mechanical systems. Inclometer is active and accurate.</p> <p>15 Tipping / Tailgate Skip unit raises and lowers fully without issue and with no unusual noises. No excessive damage to the dump bed, tailgate or chains / mechanisms.</p> <p>16 General Functions Check surroundings, test drive to ensure all is functioning as expected.</p> |
|------------------------------------------------------------------------------------------------------------------------------------------------------------------------------------------------------------------------------------------------------------------------------------------------------------------------------------------------------------------------------------------------------------------------------------------------------------------------------------------------------------------------------------------------------------------------------------------------------------------------------------------------------------------------------------------------------------------------------------------------------------------------------------------------------------------------------------------------------------------------------------------------------------------------------------------------------------------------------------------------------------------------------------|-----------------------------------------------------------------------------------------------------------------------------------------------------------------------------------------------------------------------------------------------------------------------------------------------------------------------------------------------------------------------------------------------------------------------------------------------------------------------------------------------------------------------------------------------------------------------------------------------------------------------------------------------------------------------------------------------------------------------------------------------------------------------------------------------------------------------------------------------------------------------------------------------------------------------------------------------------------------------------------------------------------------|

HOW IT WORKS



Please refer to the corresponding Good to Go Safety Check Book for the full list of checks and guidance notes.

Need more inspection checklists? www.goodtogosafety.co.uk

POSTERS

Our range of safety posters have been designed to reinforce the importance of completing pre-use safety inspections when fitted in the perfect location, act as an additional visual reminder for all your employees.

These posters provide a strong visual reminder, showing employees not only what they should be looking for during a pre-use safety inspection but also highlighting the components included in the Good to Go Safety inspection checklists.

Each poster is produced on tough, durable, wipe-clean synthetic paper, making them suitable for both internal and external use. You can display these posters in even the harshest of environments and roll them up for storage purposes without them tearing or delaminating. Hang easily using pins, tape, adhesive or inside a poster frame.

A perfect addition to compliment your safe equipment management systems.

AVAILABLE FOR:

- | | | | |
|---------------------|-------------------|---------------------|------------------|
| • Dumper Trucks | • Harnesses | • Pallet Trucks | • Tractors |
| • Excavators | • Ladders | • Podium Steps | • Trailers |
| • Fixed Scaffolding | • Loader Cranes | • Racking | • Vehicles |
| • Forklifts | • MEWPs | • Scaffold Towers | • Work Platforms |
| • Front Loaders | • Overhead Cranes | • Straddle Carriers | |

ACCESSORIES



WALLET & PEN

A handy wallet that not only provides additional protection from the elements but also gives inspectors a solid writing surface to complete inspections with ease. The bright yellow cover ensures maximum visibility and the inside cover includes guidance notes to ensure your employees are always reminded of key features of the system.



TAMPER EVIDENT SEALS

An optional extra which can provide a visual indicator that the checklist insert is in place and verified by inspectors or your choice. If the tamper evident seal is missing from the universal status tag, employees should not use the equipment and a new checklist should be completed. Once the inspection is completed and confirmed, a new seal can be inserted to validate the inspection.



WEATHER RESISTANT HOLDER

These industrial strength pockets have a press seal fastening to keep important documents clean and dry. An ideal solution for storing check books, inspections and manuals on external racking, forklifts, scaffolding and any equipment used outdoors where additional protection against inclement weather may be required.



WALL MOUNTABLE DISPENSER

Provide workers with the ideal solution to keep their inspection check books organised in a central location. The strong, clear styrene construction allows easy recognition of stock levels and can hold up to ten individual inspection check books.

FAQs

Why do I need a SEMS if we haven't had an accident?

Good to Go Safety attempts to identify potential faults before they develop into a costly incident. We don't believe in waiting for an accident to occur before taking action, we simply remove potential risks at the source by promoting pre-use checks.

Who should do the inspection?

Equipment inspections should be completed by someone with sufficient training and knowledge of the equipment, and be classified as a 'competent person'.

How many check books will I need?

A risk assessment will identify the required frequency of inspection if the interval is not specified by relevant legislation. Each check book contains 25 inspections, providing sufficient for one month of daily checks or six months of weekly checks.






Do I need to use the Tamper Evident Seal?

No, the tamper evident seal is an optional extra and is recommended in areas where inserts are discovered to be removed/alterd by unauthorised personnel. By introducing the seal to the system process, it allows employees to question the equipment status if the seal is missing from the tag.

CONTACT US

T 01592 655646
W www.goodtogosafety.co.uk
E social@goodtogosafety.co.uk

FOLLOW US

 [goodtogosafety](#)
 [gtgtakeaim](#)
 [goodtogosafety](#)
 [goodtogosafety](#)
 [good-to-go-safety](#)