



PLANTER GUIDE

CATALOGUE - 2024





ABOUT US

Meristem Design is an award winning design company creating bespoke green solutions for commercial, public realm and residential spaces.

Meristem offers a comprehensive service of design, installation and maintenance to cater for any green infrastructure needs. This range includes, but is not limited to permanent and temporary parklets, living walls, green screens, interior greening, green roofs and trellis systems.



Flood and Coast Excellence Awards 2023



Energy Globe Award 2022 - United Kingdom



Business Elite Awards 2022



Pro Landscaper's 30 under 30 2021



OUR MISSION

Our mission is to bring more green into your world, whether at home, in the office or on your commute, we are committed to turning the grey green.

We are therefore, part of a movement to make cities healthier and happier places to live, and hope to become part of a wider societal trend towards embracing plants to live a more fulfilled life.



Susdrain SuDS Awards 2022



ATCM - Town and City Management Industry Awards 2022



West London Business Awards 2020



International Healthy Streets Awards 2019

METAL PLANTERS

Meristem designs, fabricates and installs a wide range of planters in different shapes, sizes and materials.

Our planters bring vibrancy and life to dull spaces.

This document details just some of the planters we design and install. For bespoke requirements contact us today.





Turning the grey green©

GREEN SCREEN PLANTERS

We supply and install planters with green screens which are available in many different species. Our instant green hedging screen provides a natural privacy screen for any garden, landscape or commercial project. and are a fantastic way of creating outdoor dining spaces, partitioning areas, greening up building, sites and much more.





Turning the grey green©



GREEN SCREEN PLANTERS

These planters are available in softwood, hardwood and steel. The galvanized steel base sets the foundations for a long-lasting, heavy duty and durable planter.

The planters can be built to any size but typically are supplied in 1.2m lengths.

Powder coated steel planters with heavy duty, sturdy trellis framework. Standard planter sizes are 1.2m x 0.4m x 0.4m with a 1.8m high trellis framework to support pre grown green screens.





TREE PLANTERS I.

Tree planters come in a range of sizes and can have watering systems installed, tree stakes and tree anchoring systems. Planters are available with lifting hooks or risers so they can be moved around with HIAB vehicles or forklift trucks.





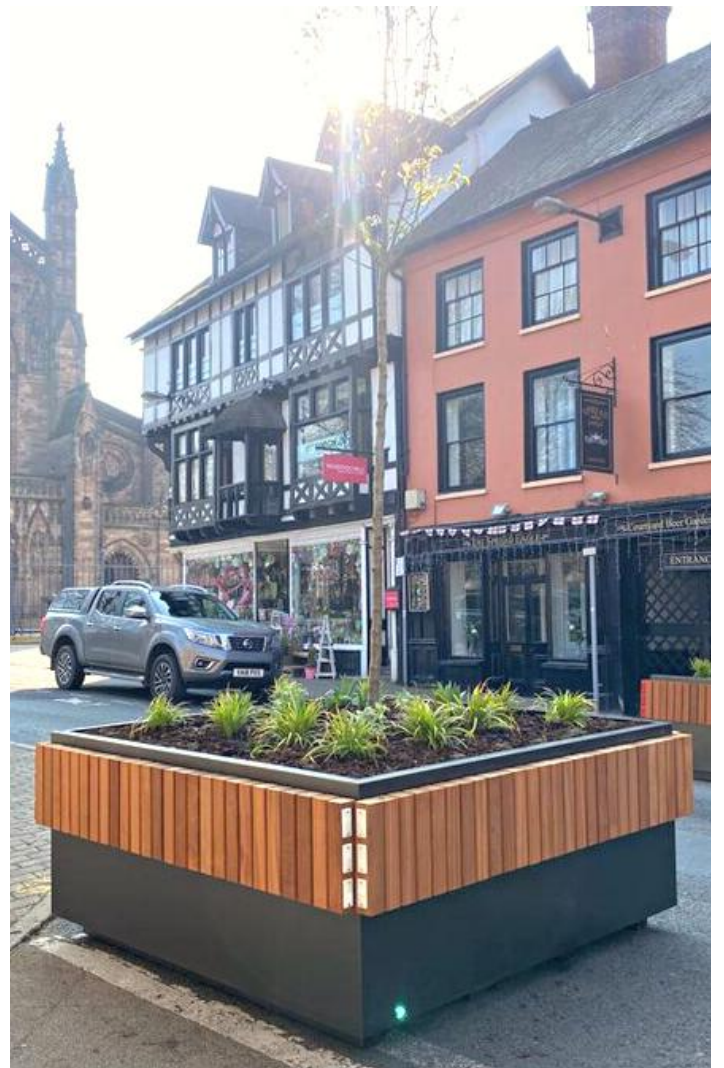
TREE PLANTERS II.

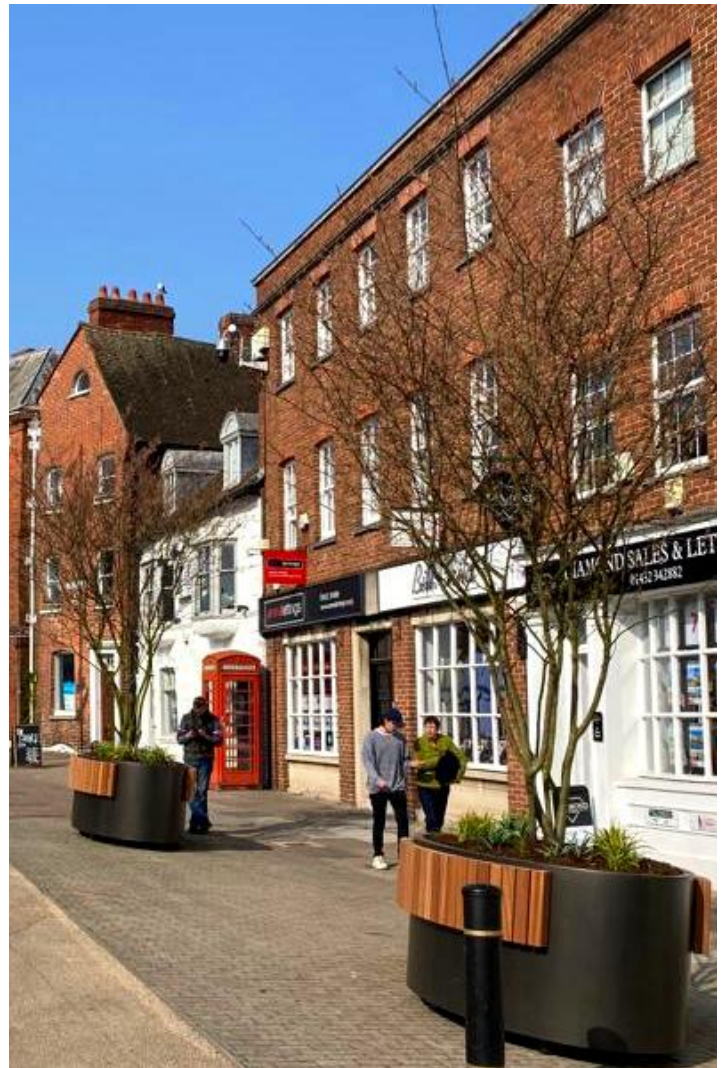
Available in multiple shapes and sizes, these planters can accommodate established tree's up to a height of 4-5 meters.

The planters feature integrated tree hooks to strap down larger trees for safety. Sapele hardwood battens create a comfortable bench which can wrap around part or the entire planter.

The benches are removable for storage or removals and the planters have integrated risers designed in for moving with a telehandler or fork lift. The planters are available in standard RAL colour powder coating or specialist metallic powder coating.







Turning the grey green©

WEATHERING STEEL

Meristem's planters are available in a weathering steel option, otherwise known as Corten Steel.

Weathering steel offers a sophisticated, industrial look which contrasts amazingly with vibrant green planting!

Weathering steel is a group of steel alloy which was developed to eliminate the need for painting and form a stable rust-like appearance after exposure to the elements.





Turning the grey green©

MERISTEM
DESIGN

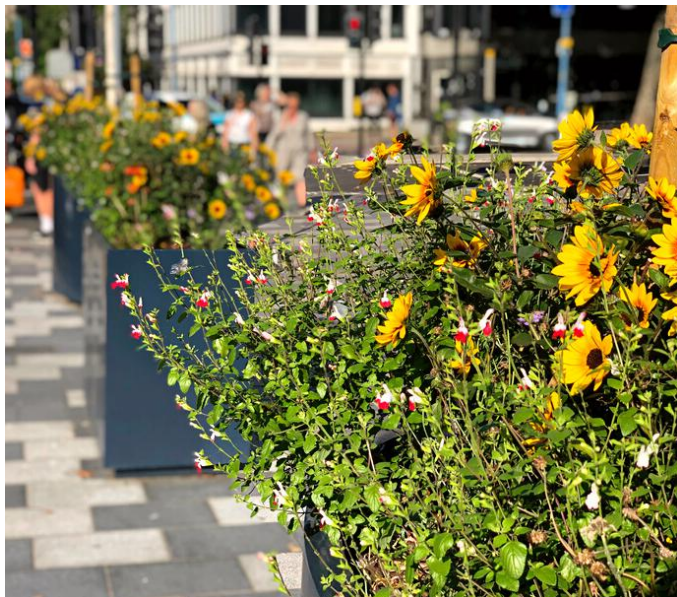


HIGH STREET PLANTERS

Available in a range of shapes and sizes, these planters are designed to fit in around existing street infrastructure.

The planters include risers on the base which allows them to be moved as and when required.

High street planters add much needed greenery to harsh urban environments and offer a simpler and more cost effective solution than tree pits and other invasive methods of installing trees in built up areas.



WALL MOUNTED PLANTERS

Meristem's wall mounted planters offer an interesting alternative to living wall systems. Available in a wide range of geometric shapes, these planters can be mounted in a pattern and linked with wire rope trellis.

Climbing plants then create an amazing effect and bring vibrancy to dull walls. Irrigation is included to ensure the plants are able to thrive with minimal maintenance.





Turning the grey green©



BIKE RACK PLANTERS

We fabricate a range of cycle storage solutions which can incorporate planting, seating and even green living roofs. Storage solutions are designed to fit within a single or double parking bay on the carriageway.

Bespoke solutions can be fabricated to fit niche spaces and locations. Graphics and custom paint designs can be applied to complement the street-scape.



GALVANIZED PLANTERS WITH HARDWOOD SEATING

This modular range of planters are perfect for urban areas. The galvanized look is ideal for where an industrial aesthetic is desired. The galvanizing provides them with enhanced protection from rusting.

These modules are also available in a powder coated option and in a range of sizes.





Turning the grey green©

POWDER COATED PLANTERS WITH HARDWOOD SEATING





Turning the grey green©



WELCOME TO
**Imperial College
London**

**WHITE
CITY** **CAMPUS**
[imperial.ac.uk/
white-city-campus](http://imperial.ac.uk/white-city-campus)

LAMP COLUMN PLANTERS

Available in a range of shapes and sizes, these planters are built to go around existing furniture or items in the street-scape. The planters are suitable to be installed around bollards, streetlamps and electrical feed points.

Access hatches and panels can be designed into the planters to ensure that when required, relevant engineers can get access to the lamp column or feed point.

Branding can be added with vinyl lettering and high definition large format printing.



TIMBER PLANTERS

Meristem designs, fabricates and installs a wide range of planters in different shapes, sizes and timbers.

Typical timber planters are available in softwood, oak, sapele and much more.

Our planters can be installed in a wide range of locations.





Turning the grey green©



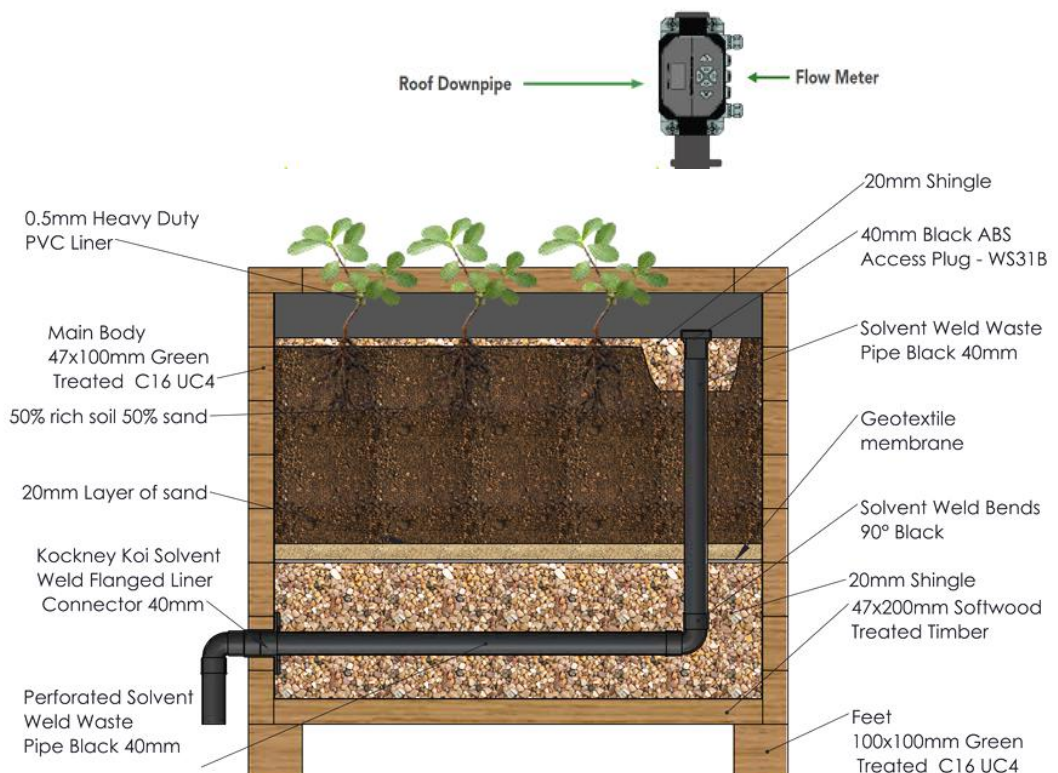
Our SuDS planters are a sustainable way to manage rainwater run-off from rooftops.

SUDS PLANTERS

Available in oak hardwood or treated softwood.

Our planters are supplied fully assembled and ready to connect into the existing drainage system. The planters are tanked with an internal drainage system. This includes an overflow and drainage outlet pipe, ready to fit into the existing site drainage system.

The drainage support pipe system is surrounded by gravel which helps with water dissipation. The whole unit is then covered with geo-textile membrane to keep it separate from the compost.



Turning the grey green©



 **HYDROROCK®**
the green label in water management

SUDS PLANTERS

With Hydrorock® natural aquifer blocks

The Hydrorock© Planter System provides wide versatility in use and unlimited flexibility in design configuration, installation and operation. For apartment blocks or office spaces, they can be a great way of greening our urban landscapes.

- ✓ **100% natural & sustainable.**
- ✓ **Made from Rockwool pre-wrapped in a protective geofiltration membrane.**
- ✓ **94% water retention by cubic volume.**
- ✓ **Surface area of 1m² holds 142L**
- ✓ **Plants draw water from blocks via capillary action - fully loaded blocks irrigate plants for 28 days.**

MERISTEM
DESIGN



Turning the grey green©

MERISTEM
DESIGN



BENEFITS

This process of encouraging the rain water to flow through the planters significantly slows water down during storm conditions, helping to reduce the rate at which water enters our rivers, lakes, and oceans, making them less likely to flood during storms.

SuDS Planters help tackle pollution by removing many of the pollutants found in the runoff from roofs, such as sediment, bird droppings and deposits from air pollution.



Our climate-resilient school's program emphasises the importance of nature-inspired design and its role in combating climate change. By incorporating SuDS planters, schools provide hands-on learning experiences for children, educating them on the significance of sustainable practices and instilling a sense of environmental stewardship. FreeStations are being deployed across many of these schools to monitor rainfall rates, temperature extremes and the effectiveness of surface water flood-risk-reduction measures installed at the schools.

MAINTENANCE GUIDE



WATERING

The advisory watering schedule is below, however, during very hot or wet periods the watering schedule will have to change to reflect the weather conditions.



up to 30 visits per year											
Jan	Feb	Mar	Apr	May	Jun	Jul	Aug	Sep	Oct	Nov	Dec
1	1	2	3	3	4	4	4	3	2	2	1

OUR MAINTENANCE SERVICE INCLUDE:



1. Watering plants to their specific watering requirements
2. Removal of rubbish, leaves and other debris
4. Feeding of plants during the growing season
5. Pruning and trimming and cleaning the plants where necessary
6. Control of pests and diseases
7. Plant replacements for natural failures
8. Topping up mulch to 50mm depth once per year
9. Monthly safety check and detailed report sent to the client



PLANTS
NOT
POLLUTION

HARDWOOD PLANTERS

Hardwood planters are available in a range of shapes made from multiple timber profile sizes. Typical hardwoods available are iroko, sapele, oak, balau and many more.

Left to age naturally, these timbers will silver over time or they can be regularly oiled to maintain their rich colour.

Hardwood planters are typically heavy duty and are well suited for modal filters, low traffic neighborhoods, street furniture and applications where planters are to be durable and long lasting.

The planters can be put on feet allowing them to be relocated if required, with a fork lift or pallet jack.



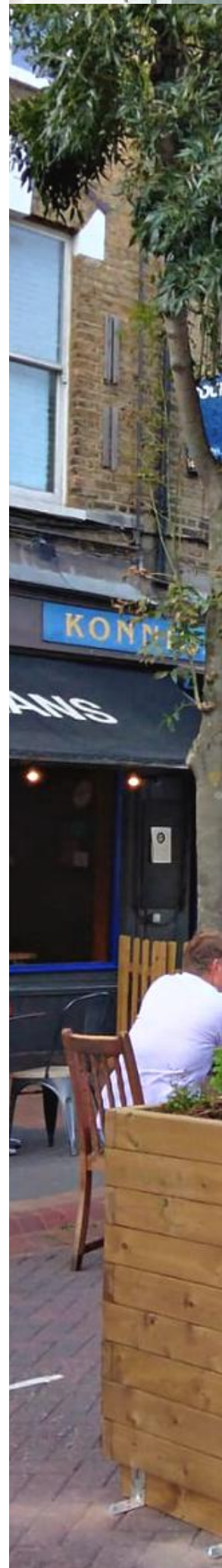
SOFTWOOD PLANTERS

Available in different timber profiles with a range of stains and can be painted.

Softwood planters are a cost effective way of greening any space.

All planters come with a 300dpm lining to protect the timber and can be bolted to the ground for security.

Optional upgrades include staining, painting, false bottoms, risers, reflectors, signage and much more.







PLANTER GUIDE

CATALOGUE - 2024

