



LES CHARRIERES

NICHOLAS ROMERIL
DANNY ROMERIL & WILLIAM ROMERIL



EXHIBITION KINDLY SPONSORED BY:



VOISIN LAW

Les Charrieres Exhibition

Introduction by Chris Clifford, BA (Hons) MA - Gallery Director

Les Charrieres is the name of the property that the artist Nicholas Romeril has lived and worked in for many years. It is where his beautiful studio is located and where he raised his two sons, the twins William and Danny Romeril both of whom have gone on to follow in their father's footsteps by developing their own creative pursuits in painting, sculpture and 3D design.

To many Jersey residents the name 'Les Charrieres' is recognised as that given to several prominent 18th century Jersey farm houses built to last in local granite. There are numerous translations from French into English which suggest its meaning is a pathway, old cart track or lane and within the local context this often refers to the cattle tracks made by the world famous Jersey cows as they were driven from the fields to the farm for milking.

Of course being on a pathway is also about taking a journey. Sometimes we follow in other people's footsteps but artists in particular often forge their own paths to discover things about the world and themselves that they could only imagine when they set out.

In this magnificent exhibition three generations of artists, all from the same family, come together to tell the story of their individual pathways to creative success and their shared love of artistic expression handed down from one generation to the next.

Each, in their own way, comes at it from a completely unique perspective and the end results are not just visually diverse but aesthetically arresting. When you start to dig a little deeper into the ideas and motivations behind the works you then begin to understand how each artist has found it essential to forge their own creative pathway in order to distinguish themselves.

If Christmas is about one thing then surely it's about the importance of family so I hope you will join us in celebrating the diverse talents of three generations of artists who have all found their pathways in life to be ones that are firmly rooted in creativity.



Jeffrey Giovannoni
Partner, Voisin Law

Voisin law firm is delighted to sponsor the Les Charrieres exhibition.

We have both worked with and supported Nick Romeril for over ten years and very much look forward to being part of this next exhibition at the Private and Public Gallery.

As one of Jersey's longest-established law firms, Voisin can trace its origins to 1869. Therefore, the heritage of our Island is important to us. Nick is a local Jersey artist whose themes capture local land and sea scapes which form part of the island's rich cultural heritage.



VOISIN LAW

Philip Romeril

Philip Romeril (1944-1990) was born to a old Jersey farming family who lived and farmed in St John since 1763.

Philip was a passionate, active and successful cattleman who was fully aware of his herd's pedigree and knew each of his cows by name. He was the president of the St John Agricultural Society before being selected as the president of the RJHA&S in 1983.

Unusually, he was also keen amateur artist. During the winter evenings he would set up a make shift studio in the family kitchen. He and Daphne Romeril (his wife) would be creative, making abstract paintings and hand crafted visual art. He hosted and took part in many artistic activities. He would attend life-drawing classes with Paul John Kilshaw and Paul worked in the vacant barns around the property as temporary art studios.



"My Father encouraged me to always do what I wanted. My parents saw that I was a keen visual artist and encouraged me to pursue my passion. Tragically, he died while I was at art school and so I was forced to make a very clear choice between taking over the profitable farm or diving into the unknown world of being an artist. With that strength of confidence I have done the same for my children, Danny and William". - *Nicholas Romeril*.



Philip Romeril
Onions and Tomato
40.5cm x 30.5cm
Oil on board
Not for Sale



Philip Romeril
Lemon, 1974
35.5cm x 46cm
Oil on canvas
Not for Sale

Nicholas Romeril



Nicholas Romeril studied at Camberwell College of Art and Design in London between 1988-1993 gaining a BA (Hons) in Fine Art painting and a MA in Fine Art Printmaking.

During these courses he won the travel scholarship from the Royal Overseas League International Painting Competition. He went to Mexico and on his return he exhibited and published his work.

After graduating, he opened and ran a studio in Brixton sharing the space with other recent graduates.

Romeril continued to print after his MA at Artichoke Print workshop in London and exhibited in several London galleries. Around this time he worked with Peter Binnington creating Verre Egolimse mirrors for the Sultan of Brunei.

Concerned with the amount of time he was spending in his own studio he opted for a complete change. Romeril left London and went travelling around South East Asia and Australia.

On returning to Jersey, Romeril again, set up a studio, began painting, sculpting and printmaking and started lecturing at Highlands School of Art. He has, since then, held over 30 solo exhibitions and many group shows in London, Switzerland, France, USA and Jersey. He exhibited one of his large 'oil on stale' paintings at 'Romantics in the Channel Islands' at the Jersey Museum in 2008.

Romeril has made many PFA artworks around the island over the last 10 years. The most public is the 'Herd of Jersey' at the Jersey Dairy, Trinity Showground. He has made others small and large scale works for private developments and continues to achieve high profile commissions.

He was awarded the 2018 Artist in Resident for the Friends of the Scott Polar Research Institute. In January 2018 he travelled on HMS Protector to the Antarctic Peninsula. The Royal Navy and Bonham's sponsor the residency.

In September 2021 Nicholas held his forth solo exhibition 'And Breathe' at Thomas Dutoit Gallery in Switzerland. The show features his Antarctic paintings, sea-scapes and the Alps Mountains.

Future Exhibitions:

March 2022

Artist in Residence for Wildlife Act, Zululand, South Africa.

May 2022

'Breaking Ice' a 5D

Antarctic Experience'.

This immersive sensual exhibition will show the virtual reality films, the documentary film, some of the paintings from the expedition, the sketchbooks made during the journey, a 30 minute PowerPoint presentation, a penguin sculpture and the associated fragrances in a cold temperature room. FastNet Film Festival, Ireland.



Study for Seasoned Timber, 2016
34cm x 39.6cm
Acrylic and colour pencil on card
£950 + GST



Dorment, 2017
50cm x 50cm
Oil on Linen
£4,500 + GST



Down From Above, 2017

80cm x 60cm

Oil on Linen

£6,000 + GST



Spring Dunes, 2021

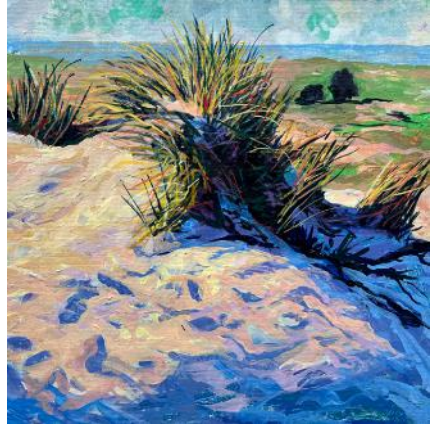
80cm x 170cm

Oil, artist hair and silver leaf on linen

£16,000 + GST



Sand dune study N01, 2021
20.6cm x 20.7cm
Mixed media on card
£750 + GST



Sand dune study N02, 2021
20.6cm x 20.7cm
Mixed media on card
£750 + GST



Sand dune study N03, 2021

20.6cm x 20.7cm

Mixed media on card

£750 + GST

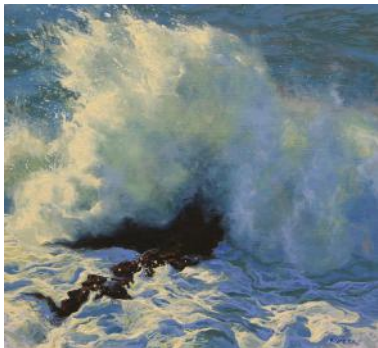
Golden Glow No4, 2021

20cm x 40cm

Oil on linen on board

£2,500 + GST





Wild Blue No2 (study), 2021
22.5cm x 24.2cm
Oil on linen on board
£1,500 + GST



Wild Blue No4 (study), 2021
24.2cm x 33.5cm
Oil on linen on board
£2,500 + GST



Shine From Behind, 2021

25.5cm x 35.5cm

Oil on canvas

£1,950 + GST

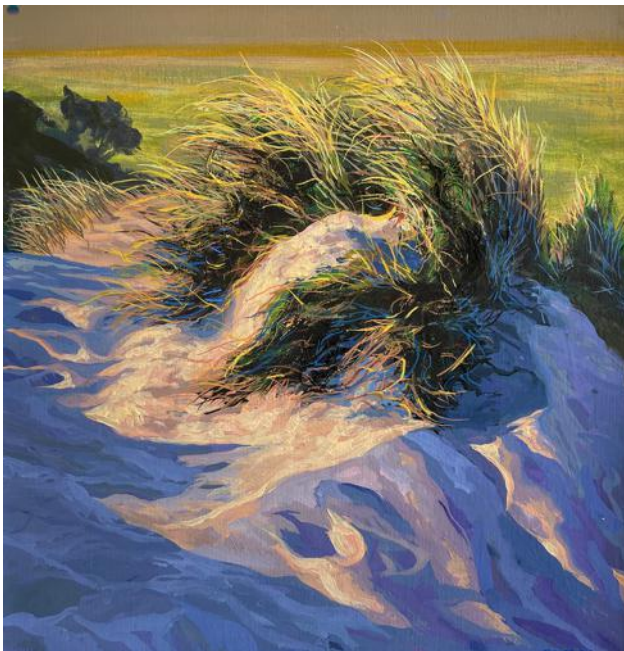


A Life of its Own, 2021

20cm x 25cm

Oil on canvas

£1,500 + GST



Monday Walk (study), 2021
28.5cm x 24.5cm
Oil and artists hair on linen on board
£1,950 + GST



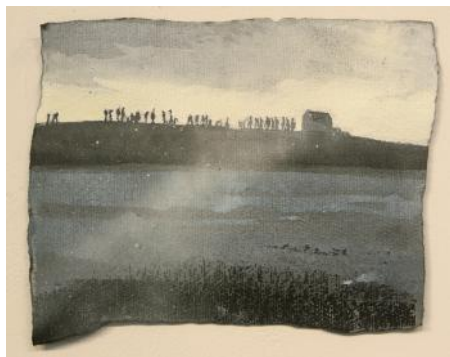
Hot day Les Ecrehous, 2021
23cm x 57cm
Ink and pencil on Kardi paper
£2,250 + GST

Mooring les Ecrehous, 2021
22cm x 57cm
Ink and pencil on Kardi paper
£2,250 + GST





Noth Side (les ecrehous), 2021
18.5cm x 29cm
Ink and pencil on Kardi paper
£1,100 + GST



Summer Party Les Ecrehous) no 1, 2021
21cm x 27cm
Ink and pencil on paper
£995 + GST



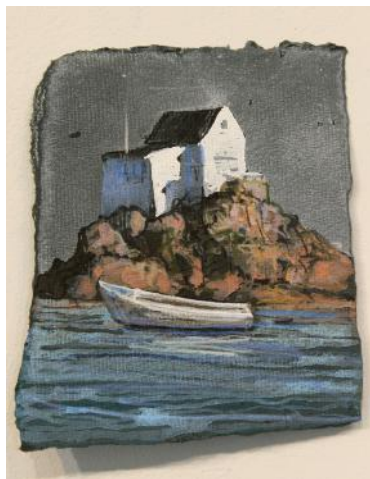
Afloat, Les Ecrehous (Sketch), 2021
18cm x 30cm
Ink and pencil on Kardi paper
£1,250 + GST



Les Ecrehous Interior, 2021
16cm x 15cm
Ink and pencil on Kardi paper
£550 + GST



Ashore les Ecrehous, 2021
18cm x 16cm
Ink and pencil on Kardi paper
£550 + GST



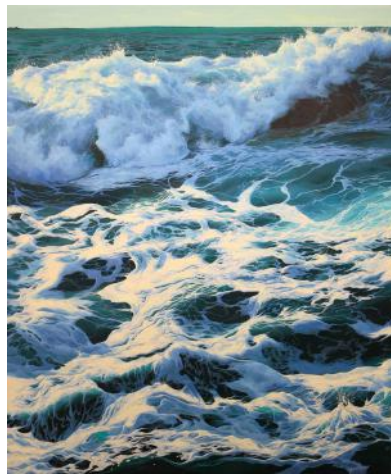
Small Boat and Hut (Sketch), 2021
17.5cm x 15cm
Ink and pencil on Kardi paper
£550 + GST



Clear Winters Storm, 2021
31cm x 93cm
Ink and pencil on Kardi paper
£3,250 + GST



Beautiful Power, 2021
120cm x 120cm
Oil on linen
£16,000 + GST



Take a Moment, 2021
180cm x 150cm
Oil on linen
£30,000 + GST



Three Trees, 2021
110cm x 130cm
Oil and artists hair on linen
£16,000 + GST



True Colour and Depth, 2021
100cm x 110cm
Oil on linen
£12,000 + GST



Wild and Stormy, 2021

30cm x 30cm

Oil on canvas

£2,250 + GST

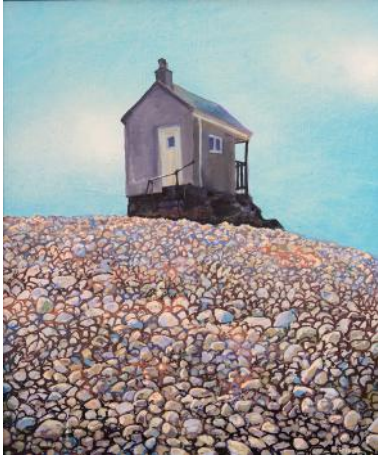
A Fairytale, Les Ecrehous, 2021

60cm x 100cm

Oil on linen

£7,500 + GST





Pebbles and Hut, Les Ecrehous, 2021
39cm x 34cm
Oil on linen on board
£1,950 + GST



Centre, Les Ecrehous, 2021
27cm x 26cm
Oil on linen on board
£1,500 + GST



In The Run, Les Ecrehous, 2021

31cm x 42cm

Oil on linen on board

£1,950 + GST

Moored at Les Ecrehous, 2021

35cm x 45cm

Oil on linen on board

£2,250 + GST





The end of a perfect day, Les Ecrehous, 2021

31cm x 42cm

Oil on linen on board

£1,950 + GST

Danny Romeril



Danny Romeril (b.1996) is an artist from Jersey in the Channel Islands. He studied Fine Art at Central Saint Martins in London before graduating in 2019. Since then he has undertaken the La Brea Studio Residency in Los Angeles culminating in a show at The Cabin LA. He has shown internationally including solo shows 'One Hit Wonder' at New Arts Projects, London, 'Music Shop Music' at Galerie Thomas Fuchs, Stuttgart, and 'Wood for the Trees; at Blue Shop Cottage, London. He has also shown in group shows such as 'The Space Between' at Setareh X, Düsseldorf, in 2020, 'Antisocial Isolation' at Saatchi Gallery, London and 'Anthem' at Tremeneere Sculpture Garden, Penzance.

Romeril's work looks at the languages available in painting, often painting everyday scenes he tries to push what he can 'get away with' when making an image. Invention, shape and form all make up key features of his paintings which subject matter is fluid. From musical instruments, crowds, invented album covers and smoke to trees and houses. An awareness to the falseness of the painted picture, Romeril's work doesn't try and copy the physical reality but reinterprets it into a plane of forms and spaces.



The Stump, 2021
Oil and collage on canvas
137cm x 167cm
£4,350 + GST



Breathing out, 2021
Oil on board
38cm x 26cm
£900 + GST



Pebble dash, 2021
Oil on canvas
20cm x 30cm
£750 + GST



Dirt Path, 2021
Oil, collage and colouring pencil on canvas
111cm x 116cm
£3,200 + GST



Hippie in the woods, 2021
Oil on canvas , 102cm x 82cm
£2,500 + GST



Night Canopy, 2021
Oil on canvas , 25cm x 20cm
£700 + GST

Canopy iii, 2021
Goauche on paper,
29cm x 19cm Framed
£400cm + GST





Et's spaceship, 2021
Oil on canvas
116cm x 146cm
£3,700 + GST



Canopy ii, 2021
Oil on canvas
25cm x 30cm
£800 + GST



Purple forest, 2021
Gouache on paper
21cm x 19cm Framed
£400 + GST



Pink Jersey House, 2021
Gouache on paper
28cm x 38cm Framed
£500 + GST



William Romeril

Born 1996 and lives and works in Jersey, William Romeril studied at the University for the Creative Arts, Rochester, between 2016 and 2019. In which time he achieved a BA(Hons) in Silversmithing, Goldsmithing and Jewellery.

He won a Precious Metal Grant from the Goldsmith's Centre for his Design 'An overelaborate solution to a blunt pencil'. William was also selected to be mentored during his final year by renowned silversmith Ray Walton thanks to the Incorporation of Professional Goldsmiths.

For his final degree collection he was awarded the "Runner up New Designer of the Year" Prize at New Designers 2019, being selected from graduates of design courses from across the UK.

William has created bespoke Silverware pieces for clients including a cigarette case; themed on the Easter Rising in Dublin, a cardholder and a bottle opener and William is currently working on a set of 'decanter labels' for New College, Oxford University.

William's work explores the human condition and our position in the world.

William's work is characterised by his obscure approach to making things whose uses are absurd or contradictory.

This body of work is a reflection of William's own existentialist philosophies. Through creating obscure ways to record and visualise the passage of time he builds a platform for a dialogue about how we perceive our own existence and how the passing of time can alter our perceptions. Williams' approach to the challenges he sets himself builds on this idea. With each piece being carefully handmade and technically challenging.

Also featured in this show are Bronzes by William, who with the support of ArtHouse Jersey has created small scale figurative sculptures that reflect how we understand reality. The pieces themselves are postured as if thinking deeply or being absorbed by something unseen. The Lost Wax process marks these pieces as one offs, as well as being able to transfer a very tactile and soft feel of the wax to the cold hard bronze.

Most of all William enjoys making work that is playful and humorous.



An Incense-itive Approach to Time,

Sterling Silver, 2019

24cm x 8cm x 2cm

£950 + GST

Incense Holder with adjustable angle to control burn rate, slowing down the more horizontal it is



Oil the time in the world,
Sterling Silver, Mahogany, 2021
25cm x 10cm x 10cm
£950 + GST

Timer that uses Gravity and
Oil to measure 4 hours



Burning down the hours,
Sterling Silver, Slate, 2021
34cm x 12cm x 5cm
£950 + GST

Notched for Half Hour and Hour
intervals as the candle Burns Down



Sun-times I sit and watch the day go by

Sterling Silver, Mahogany, 2021

20cm x 20cm x 10cm

£2000 + GST

A movable Sundial that can be adjusted to work from 35 degrees latitude to 59 degrees.



*The Wrong way to put a Pencil
behind your ear,*

Sterling Silver. 2019

10cm x 7cm x 1cm

£295 + GST

To Hold a Pencil behind
your ear backwards.



The Risky Spirit measure,

Sterling Silver, 2020

4.5cm x 3.5cm x 3cm

£295 + GST

Designed to pour out at 25ml,
depending on what spirit is used...



Self care tools,

Sterling Silver, 2020

10cm x 3cm

£295 + GST

To pop spots, clean nails, tooth pick,
nose pick and scrape away sleep



A Handy Chess Set
Bronze, Steel, 2021
30cm x 30cm x 9cm
£1,500 + GST

Chess set modelled after various
humorous poses of the hand



The Weight of Knowledge,
Bronze, 2021
8cm x 15cm x 15cm Each Bookend
£850 + GST



Looking at Space,
Bronze, 2021
7cm x 5cm x 5cm
£350 + GST



The Reeling Realization,
Bronze, 2021
7cm x 6cm x 4.5cm
£350 + GST



Sitting on the edge,
Bronze, 2021
10cm x 13cm x 6cm
£425 + GST



A Question?
Bronze, 2021
16cm x 6cm x 7cm
£425 + GST



A Find,
Bronze, 2021
9cm x 9cm x 7cm
£425



Contemplation,
Bronze, 2021
15cm x 5cm x 3cm
£425 + GST



Preview night: Friday 26th November, 5pm - 8pm

Exhibition runs weekdays from 12pm-6pm and Saturdays from 10am-2pm

Online viewing rooms at www.privateandpublic.com. For further information contact
Chris Clifford, Gallery Director: +44 (0) 7797 714186 or chris@privateandpublic.com