



A jungle-themed bar – for party animals in the urban jungle!





A memorable urban jungle experience

With a name like *White Rhino Bar & Eats*, a jungle-themed fit-out was a natural choice for this bar and restaurant venue. Obviously, a white rhino had to be part of the decor! But why stop there?

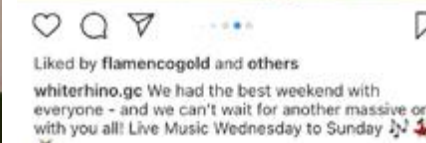
Interior designers *Space Cubed* and venue owner Artesian Hospitality had a vision for an immersive, sensory jungle-themed experience. Natureworks was only too happy to bring this vision to life!

Picture the scene... Guests chat and sip drinks in an airy interior space with a magnificent tree at the centre. Meanwhile, bar staff mix exotic cocktails in front of an ocean montage. Above their heads, a waterfall cascades over a soaring rock formation.

Upstairs in the eatery, diners enjoy meals surrounded by beautiful green walls of lush jungle plants. At the base of the stairs are a beautiful life-sized white rhinoceros and her calf. They stand serenely in front of a tree, welcoming visitors and posing for photos.

Shareable photo opportunities

As you can see from the images, visitors love to share their jungle-themed experiences on social media. The rhino sculptures are especially popular for selfies, promoting greater awareness of the venue name.



The white rhino and calf sculptures



A central tree sets the scene for the bar area



Social media posts from White Rhino



SPACE
CUBED
DESIGN
STUDIO



Designing the experience

With a long track record of themed fit-outs for commercial buildings, Natureworks approached this project with an enthusiastic yet practical approach.

The first step was to meet with the designers to discuss their vision for the space, review draft plans and determine any practical constraints. For example, when creating interior spaces that cater for crowds, issues such as lighting, accessibility and safety are of paramount importance.

Equally, it's essential for the team to have a shared vision for the space, so they can throw in ideas to help create a unique, creatively-themed experience.

Scope of the project

After determining the project requirements, Natureworks provided an estimate to supply and install the following:

- ✓ **Adult rhino sculpture**, with heavy-duty construction, finished in white; in two pieces so the back half of the rhino could be mounted on the other side of the wall
- ✓ **Rhino calf sculpture**, finished in white, free-standing
- ✓ Large **artificial rock** wall and waterfall feature with pump, plumbing and waterproofed areas
- ✓ Central **artificial tree**, 6m high/wide with open canopy and foliage designed to enhance lighting in the space
- ✓ **Windswept tree** with foliage, wall-mounted
- ✓ **Green walls** for the dining area, approx 50m² with a range of artificial plants

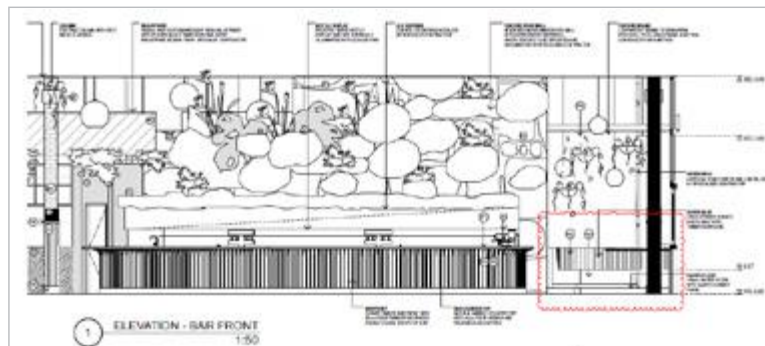
The images on this page show the designers' concept for the bar area, and the final result.



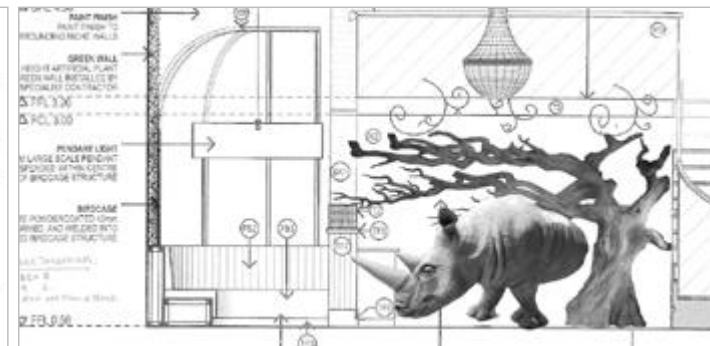
Designer's visualisations of the bar area (by Space Cubed Design Studio)



Photos of the completed bar area



Construction drawings for bar (by Space Cubed Design Studio)



Detail from plans showing position/scale of rhino/tree sculptures



Building and installing the themed fit-out

Working from building plans, site inspections and agreed project specifications, Natureworks planned the items in detail before starting on construction.

We fabricated the fibreglass trees, rock elements and animal sculptures in our north Brisbane studio. As rhinos are part of our standard collection of **safari animal sculptures**, we could easily customise them for the project. This involved using heavy duty construction (to allow for people leaning or sitting on them) and giving the sculptures a white finish.

In addition to the sculptures, we arranged practical requirements such as the plumbing for the waterfall. We also selected and supplied artificial plants for the green wall and rock feature. Once all the items were ready, we transported them to the Gold Coast and installed them in the new building.



The Natureworks collection includes a range of safari animals. Our standard adult and calf rhino sculptures were finished in white for the White Rhino restaurant.



The artificial tree at Natureworks studio ready for transporting



The tree is a central feature of the main bar area



Adding artificial plants to the rock and waterfall feature



Installing the rock wall and waterfall



The rear of the white rhino cheekily protrudes from the green wall

WHITE RHINO JUNGLE-THEMED BAR & RESTAURANT, SURFERS PARADISE

Natureworks in action



White Rhino Bar & Eats **Artesian Hospitality** **Space Cubed Design Studio** **55 Cavill Ave, Surfers Paradise, QLD**

2018

PROJECT CASE STUDY

"It's a space bringing all your Jumanji dreams to life. Except it's pretty and not at all terrifying..."

The pair of rhinos are meticulously crafted – really quite realistic. Love them.."

Kirra Smith, **Inside Gold Coast**



"Dine among the extraordinary surroundings of an urban jungle, complete with waterfall bar, soaring rock formations, and an open breezy layout."

White Rhino Bar & Eats



Create an amazing space!

Whether you need a complete interior fit-out or just a couple of themed props, Natureworks can help.

Contact us to discover how we can create a unique, memorable themed experience for your bar, shop, restaurant, hotel, office or business premises.