

ROSEFIELD

Lab Grown Diamonds

True beauty lies in simplicity — and now, in diamonds made for today

Our new Lab-Grown Diamond Collection brings the brilliance of diamonds within reach — without compromise. Thoughtfully designed to celebrate the most special moments, these timeless pieces combine elegance, sustainability, and accessibility.

Whether it's a personal milestone, a gift from the heart, or simply a moment to celebrate yourself, our diamonds are made to complement life's meaningful moments — **beautifully and affordably.**



Unlock the full story of our Fine Jewelry.
Scan to watch the training and behind-the-scenes collection content.



Real Diamond. Just a Smarter Choice.

Lab-grown diamonds are chemically, physically, and optically identical to natural diamonds — the only difference is their origin. Same sparkle, same strength, without the mining. Choose brilliance with a conscience.



Crafted in Solid 14K Gold - Built to Last

Our entire collection is made with 14K gold — the perfect balance of luxury and durability. It's resistant to tarnish, made for everyday wear, and holds its shine for years. Real gold. Real value. Made to stay with you.





Necklaces



Solitaire Diamond 4 Prong Necklace



Solitaire Diamond 4 Prong Necklace | € 339
0.115 ct | FNS4G-F376



Open Circle Diamond Necklace | € 399
0.014 ct | FNOCG-F364



Round Diamond Solitaire Necklace | € 399
0.115 ct | FNRSF-F373



Teardrop Diamond Pavé Necklace | € 529
0.099 ct | FNTDG-F367



Long drop Diamond Pavé Necklace | € 529
0.110 ct | FNLDG-F368





Pave Diamond Heart Necklace | € 449
0.06 ct | FNPHG-F371



Heart and Diamond Necklace | € 489
0.035 ct | FNHDG-F366



Bubble Heart Diamond Necklace | € 629
0.217 ct | FNBHG-F369



Bubble Heart Diamond Necklace



Sun Diamond Necklace | € 399
0.08 ct | FNSDG-F372



Flower Diamond Necklace | € 379
0.051 ct | FNFDG-F374



2 Way Diamond Necklace | € 499
0.038 ct | FN2WG-F363



3 Diamond Necklace | € 499
0.062 ct | FN3DG-F362



Princess Diamond Necklace | € 459
0.058 ct | FNPDG-F365

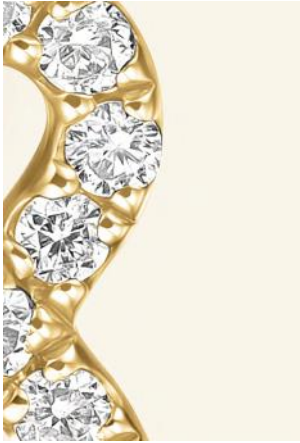




4 Diamond Necklace | € 399
0.055 ct | FNFDG-F375



5 Diamond Stone Necklace | € 499
0.236 ct | FNDSG-F370



Bracelets



Single Marquise Diamond Bracelet



Single Marquise Diamond Bracelet | € 399
0.166 ct | FBSMG-F418



Round Solitaire Diamond Bracelet | € 359
0.115 ct | FBRSG-F413



Single Square Diamond Bracelet | € 459
0.311 ct | FBSSG-F417



Plain Heart Bracelet | € 299
FBPHG-F416



Open Heart Diamond Bracelet | € 339
0.028 ct | FBOHG-F410



Triple Heart Diamond Pavé Bracelet | € 399
0.099 ct | FB3HG-F412





Gold Links Bracelet | € 259
FBGLG-F415



Infinet Diamond Bracelet | € 339
0.031 ct | FBIDG-F411



5 Diamond Bracelet | € 359
0.04 ct | FB5DG-F409



Dangling Drops Diamond Bracelet | € 299
0.032 ct | FBDDG-F408





Short Wave Diamond Bracelet | € 359
0.029 ct | FBSWG-F414



Long Wave Diamond Bracelet | € 399
0.12 ct | FBLWG-F419



Earrings



Solitaire Diamond 3 Prong Studs | € 399
0.136 ct | FE3PG-F407



Solitaire Diamond 4 Prong Studs | € 299
0.07 ct | FES4G-F394



Solitaire Diamond Round Studs | € 239
0.03 ct | FESRG-F396



Diamond Solitaire Star Studs | € 299
0.01 ct | FESSG-F397



Star Diamond Studs | € 239
0.01 ct | FESSG-F395



Solitaire Diamond Marquise Stud



Solitaire Diamond Marquise Studs | € 499
0.337 ct | FESMG-F393



Dome Diamond Studs | € 289
0.01 ct | FEDDG-F386



Open Circle Diamond Studs | € 329
0.03 ct | FEOCG-F380



Evil Eye Diamond Studs | € 339
0.101 ct | FEEEG-F400



Diagonal Diamond Studs | € 359
0.099 ct | FEDSG-F398



3 Diamond Studs | € 359
0.085 ct | FE3DG-F379



Triangle Diamond Studs | € 299
0.12 ct | FETDG-F399



Elongated Diamond Studs | € 359
0.123 ct | FEEDG-F388



Round Diamond Pavé Studs | € 399
0.205 ct | FERSG-F382



Heart Diamond Pavé Studs | € 399
0.125 ct | FEHDG-F387



Square Diamond Pavé Studs | € 499
0.194 ct | FESSG-F381



Diamond Huggies | € 539
0.27 ct | FEDHG-F405



Diamond Hoops | € 499
0.111 ct | FEDHG-F401



Long Drop Diamond Pave Earring



Dangling Diamonds Earrings | € 399
0.22 ct | FEDDG-F402



Long Drop Diamond Pave Earrings | € 699
0.209 ct | FELDG-F385



Statement Diamond Hoops | € 859
0.153 ct | FESHG-F392



Bubble Diamond Hoops | € 689
0.643 ct | FEBDG-F391



Twisted Diamond Hoops | € 459
0.036 ct | FETDG-F389



Half Twist Diamond Hoops | € 459
0.052 ct | FEHTG-F390



Wave Multi-Diamond Hoops | € 499
0.089 ct | FEWMG-F378





Twirl Diamond Hoops | € 559
0.081 ct | FETDG-F406



Oval Diamond Hoops | € 559
0.036 ct | FEOHG-F377



Wave Pavé Diamond Hoops | € 1219
0.657 ct | FEWPG-F404



Pavé Diamond Hoops | € 859
0.403 ct | FEPDG-F403



Triple Pavé Diamond Hoops | € 859
0.475 ct | FETDG-F383

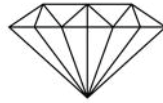


Wave Pavé Diamond Hoops | € 859
0.374 ct | FEWPG-F384



Wave Pavé Diamond Hoop

THE 4 Cs



Our lab-grown diamonds are held to the highest standards and evaluated by universally recognized 4Cs: color, carat, cut, and clarity.

Pieces in Rosefield Lab-Grown Diamonds collections are of very fine quality: D/E in color and VS1 in clarity, ranging up to 0.6 carats.






COLOR

Diamond color refers to how colorless a diamond is.

Colorlessness is the most desirable feature in most diamonds and is rarer.

All our diamonds are colorless, rated D-E.

GIA Color Grading Scale

Color	Description	Grade
	Colorless	D E F
	Near Colorless	G H I J
	Faint Color	K L M
	Very Light Color	N O P Q R
	Light Color	S T U V W X Y Z

CARAT

Carat measures the weight of a diamond and refers to an exact weight of 200 mg.
The carats of our diamonds range between 0.01 to 0.6.



0.01 ct



0.1 ct



0.2 ct



0.3 ct



0.6 ct

CUT

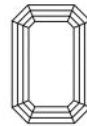
Cut refers to how well-proportioned a diamond's dimensions are and it enhances its sparkle and brilliance.



Pear



Brilliant



Emerald



Princess

CLARITY

Diamond clarity judges the flaws, inclusions and blemishes in a diamond. While almost all diamonds are flawed, our diamonds have no imperfections visible to the naked eye, graded VS1.



FL IF



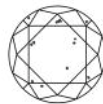
VVS1 VVS2



VS1 VS2



SI1



SI2



I1



I2



I3

rosefield.com