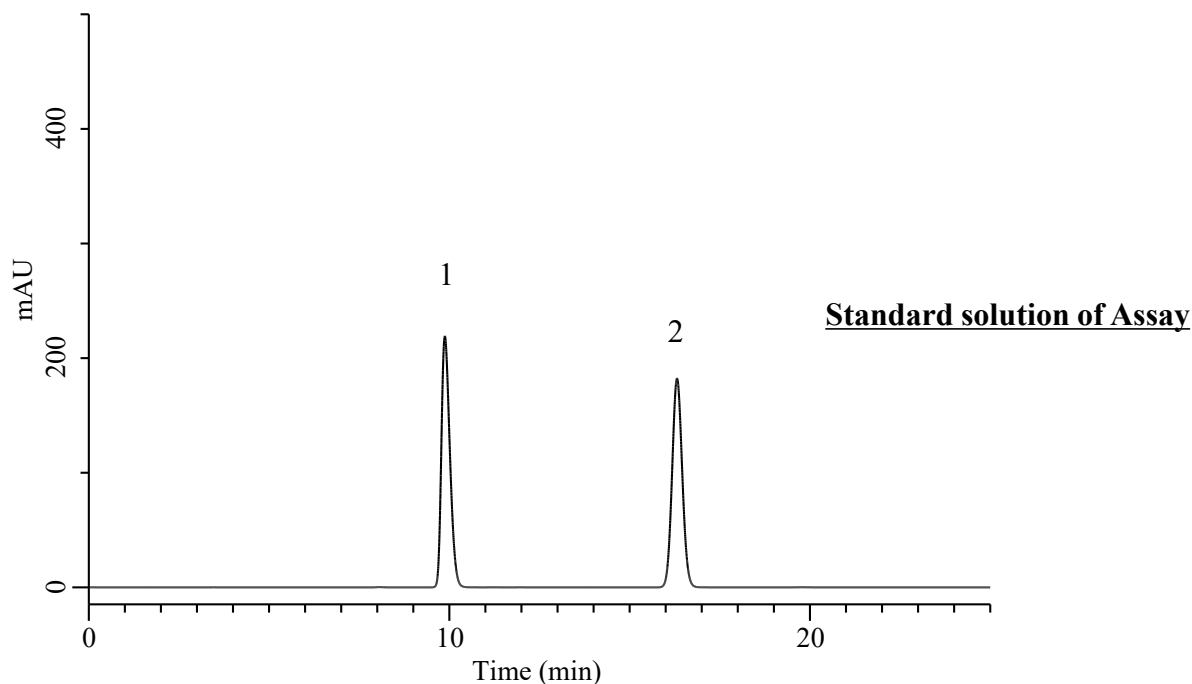


## Analysis of Aripiprazole

(Under the Condition of the draft for the Japanese Pharmacopoeia, Aripiprazole Tablets)



### Conditions

**System** : Chromaster HPLC system (HITACHI)  
**Column** : InertSustain C18 (GL Sciences Inc.)  
 (5  $\mu$  m, 250 x 4.6 mm I.D.)  
**Column Cat. No.** : 5020-07346  
**Eluent** : CH<sub>3</sub>CN/CH<sub>3</sub>OH/CH<sub>3</sub>COOH/Solution\*  
 = 330/110/10/560, v/v/v/v  
**Flow Rate** : 1.0 mL/min  
**Col. Temp.** : 25 °C  
**Detection** : UV 254 nm  
**Injection Vol.** : 10  $\mu$  L  
**Sample** : Standard

### Analyte:

1. Aripiprazole 200  $\mu$  g/mL  
 2. Propyl Parahydroxybenzoate 66  $\mu$  g/mL

Resolution : 13.6 ( $\geq$  8)

RSD of the peak ratio  
 of 1 to 2 (%) (n=6) : 0.04 ( $\leq$  1.0)

\* Dissolve 2.84 g of anhydrous sodium sulfate in water to make 1000 mL.