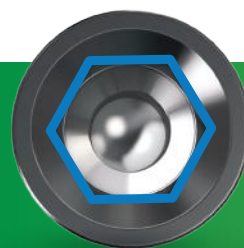


LEGACY CLASSIC IMPLANT



 Internal Hex
Connection (IH)



 Conical Standard
Connection (CS)



The DFI implant is Alpha-Bio Tec's legacy implant, based on technology that has proven to deliver long term, reliable clinical results and optimal patient care. The DFI implant is now available in two platforms - Internal Hex and Conical Standard Connection.

The DFI implant is a cylindrical slightly tapered implant and is suitable for a wide range of clinical indications and bone types, especially designed to enable dental professionals to achieve long-term stability, and predictable, esthetic results.



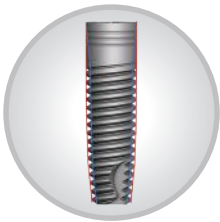
CORONAL PART

Design Features

- Micro rings
- Rough surface

Clinical Benefits

- Reduced marginal bone loss
- Decreased crestal compression
- Increased Bone to Implant Contact (BIC)



IMPLANT BODY AND CORE

Design Features

- Cylindrical body
- Slightly tapered apical area
- Increased surface area
- Combination of parallel walls and tapered apex

Clinical Benefits

- Smooth & controlled insertion
- Good initial stability
- Increased BIC
- Efficient load distribution



IMPLANT THREADS

Design Features

- Variable threads
- Double thread design with 1.2mm steps

Clinical Benefits

- Smooth & controlled insertion
- Good initial stability
- Increased BIC
- Efficient load distribution due to the combination of parallel walls and tapered apex



APICAL PART

Design Features

- Sharp threads
- Cutting flute
- Flat apex

Clinical Benefits

- Smooth and controlled insertion
- Good initial stability

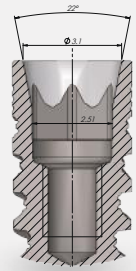
NEW! IMPLANT-ABUTMENT CONNECTION AND IMPLANT PACKAGE



NEW! DFI CONICAL CONNECTION

A conical connection demonstrates following mechanical and biological advantages:

- Enhanced platform switching
- Tight implant abutment fit
- Increased support area between abutment & implant platform
- Improved accuracy
- Minimal micromovements
- Improved bone preservation



NEW! IMPLANT PACKAGE

The new mountless package with advanced grip drivers is easy-to-use and designed for maximum comfort and enhanced ergonomics:

- Holders are color-coded for easy identification of implant length
- The unique design enables the stacking of several packages together for maximum storage space efficiency
- Label indicates the implant type, length and connection (IH, CS)
- Mountless package can be used in guided surgery procedures along with Alpha-Bio Tec's Guided Surgical Tool Kit (GSTK)




DFI STRAIGHT DRILLING SEQUENCE

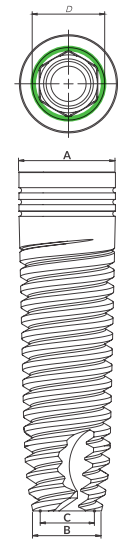
	Bone Type IV				Bone Type II & III				Bone Type I							
Ø 3.3	Ø 2.0	Ø 2.8	Cortical*		Ø 2.0	Ø 2.8			Ø 2.0	Ø 2.8	Ø 3.2	Cortical*				
Ø 3.75	Ø 2.0	Ø 2.8	Ø 3.2	Cortical*	Ø 2.0	Ø 2.8	Ø 3.2		Ø 2.0	Ø 2.8	Ø 3.2	Ø 3.65	Cortical*			
Ø 4.2	Ø 2.0	Ø 2.8	Ø 3.2	Ø 3.65	Cortical*	Ø 2.0	Ø 2.8	Ø 3.2	Ø 3.65	Ø 2.0	Ø 2.8	Ø 3.2	Ø 3.65	Ø 4.1	Cortical*	
Ø 5.0	Bone Type IV				Bone Type II & III				Bone Type I							
	Ø 2.0	Ø 2.8	Ø 3.2	Ø 3.65	Ø 4.1	Ø 4.5	Cortical*	Ø 2.0	Ø 2.8	Ø 3.2	Ø 3.65	Ø 4.1		Ø 4.5		
Hard Bone Type I																
	Ø 2.0	Ø 2.8	Ø 3.2	Ø 3.65	Ø 4.1	Ø 4.5		Ø 2.0	Ø 2.8	Ø 3.2	Ø 3.65	Ø 4.1	Ø 4.5	Ø 4.8	Cortical*	

* Cortical - Drill through cortical plate



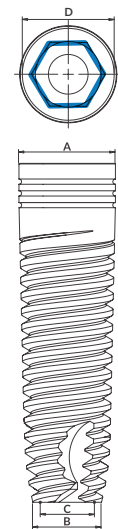
ORDERING INFORMATION
NEW! CONICAL STANDARD CONNECTION (CS)

Diameter	Length	Ref. No CS	Dimensions			
			A	B	C	D
	8mm	1828	Ø3.85	Ø3	Ø2.1	Ø3.1
	10mm	1820	Ø3.85	Ø3	Ø2.1	Ø3.1
	11.5mm	1821	Ø3.85	Ø3	Ø2.1	Ø3.1
	13mm	1823	Ø3.85	Ø3	Ø2.1	Ø3.1
	8mm	1838	Ø4.2	Ø3	Ø2.2	Ø3.1
	10mm	1830	Ø4.2	Ø3	Ø2.2	Ø3.1
	11.5mm	1831	Ø4.2	Ø3	Ø2.2	Ø3.1
	13mm	1833	Ø4.2	Ø3	Ø2.2	Ø3.1
	8mm	1848	Ø4.95	Ø4.05	Ø3.1	Ø3.1
	10mm	1840	Ø4.95	Ø4.05	Ø3.1	Ø3.1
	11.5mm	1841	Ø4.95	Ø4.05	Ø3.1	Ø3.1
	13mm	1843	Ø4.95	Ø4.05	Ø3.1	Ø3.1



ORDERING INFORMATION
INTERNAL HEX (IH)

Diameter	Length	Ref. No. IH	Dimensions			
			A	B	C	D
	8mm	1288	Ø3.7	Ø2.6	Ø2.1	Ø3.5
	10mm	1280	Ø3.7	Ø2.6	Ø2.1	Ø3.5
	11.5mm	1281	Ø3.7	Ø2.6	Ø2.1	Ø3.5
	13mm	1283	Ø3.7	Ø2.6	Ø2.1	Ø3.5
	8mm	1268	Ø3.85	Ø3	Ø2.1	Ø3.1
	10mm	1260	Ø3.85	Ø3	Ø2.1	Ø3.1
	11.5mm	1261	Ø3.85	Ø3	Ø2.1	Ø3.1
	13mm	1263	Ø3.85	Ø3	Ø2.1	Ø3.1
	8mm	1278	Ø4.2	Ø3	Ø2.2	Ø3.1
	10mm	1270	Ø4.2	Ø3	Ø2.2	Ø3.1
	11.5mm	1271	Ø4.2	Ø3	Ø2.2	Ø3.1
	13mm	1273	Ø4.2	Ø3	Ø2.2	Ø3.1
	8mm	1298	Ø4.95	Ø4.05	Ø3.1	Ø3.1
	10mm	1290	Ø4.95	Ø4.05	Ø3.1	Ø3.1
	11.5mm	1291	Ø4.95	Ø4.05	Ø3.1	Ø3.1
	13mm	1293	Ø4.95	Ø4.05	Ø3.1	Ø3.1



© Alpha-Bio Tec All Rights Reserved. 995-0150 R6/08.22

Alpha-Bio Tec's products are CE-marked in accordance with the Council Directive 93/42/EEC and Amendment 2007/47/EC. Alpha-Bio Tec complies with EN ISO 13485: 2012 and the Canadian Medical Devices Conformity Assessment System (CMDCAS). Product availability may vary between countries.

Check our website www.alpha-bio.net for the most updated brochure version

