

GROUND PROTECTION TILES – FLEXIBLE SURFACE PROTECTION FOR AREAS WITH HIGH DEMANDS



EXPLORE OUR GROUND
PROTECTION TILES, DESIGNED TO
MEET THE TOUGHEST DEMANDS
WITH FLEXIBLE AND DURABLE
SURFACE PROTECTION





GROUND PROTECTION TILES AS A STABLE BASE

Explore our flexible ground protection tiles, road plates, and temporary flooring – engineered to meet the toughest demands. Our innovative flooring system is designed to adapt to all types of terrain, providing a stable platform for maintenance work – no matter where you are. Each tile connects seamlessly using our intuitive channel cover and support system. With a simple slide-and-lock mechanism, installation is quick and hassle-free, so you can focus on getting the job done. When used for ground protection in the field, the system ensures both stability and durability. Depending on the surface, the outer panels are securely anchored with U-profiles and ground stakes – delivering outstanding reliability even in the most challenging environments. Experience the convenience and reliability of our ground protection tiles– the ultimate solution for mobile repair operations. Trust a surface that adapts to your needs, enabling you to work efficiently – wherever you're needed





PROTECTIVE FLOORING FOR WORKSHOPS

The unique design and interlocking system of the protective flooring gives it exceptional strength and versatility – without the need for excessive additional materials or weight. Use the flooring tiles to protect the surface beneath, regardless of type.

Even the heaviest vehicles and tanks can be serviced directly on the floor.



STRONG, FLEXIBLE, AND EASY TO INSTALL! AN ALTERNATIVE TO CONCRETE – DIRECTLY IN THE FIELD



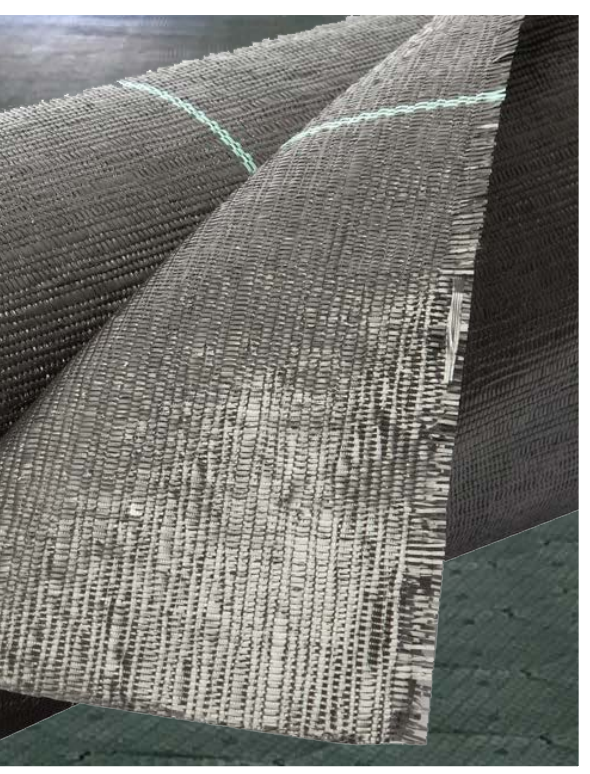
DESIGNED FOR QUICK INSTALLATION WITH MINIMAL GROUND PREPARATION.

PERFECT AS A BASE FOR STORAGE, VEHICLE MAINTENANCE TENTS, MOBILE ROADS, AND MORE.

USE GEOTEXTILE BENEATH THE PROTECTIVE FLOORING TO SHIELD AGAINST COLD AND MOISTURE.



ASSEMBLY TIME PER PERSON:
APPROXIMATELY 100 M²/HOUR



WHEN YOU ASSEMBLE AND CONNECT THE TILES WITH THE "OVER AND UNDER" SYSTEM, YOU ACHIEVE EXCEPTIONAL STRENGTH, AS THE FLOOR PANELS SUPPORT EACH OTHER ON ALL SIX SIDES.

INSTALL THE TILES SYSTEM WITHOUT THE NEED FOR TOOLS. THE PLATES HAVE NO SHARP EDGES, MAKING ASSEMBLY BOTH SMOOTH AND SAFE.





JMAB



CBR (CALIFORNIA BEARING RATIO)

The protective tiles system can also be placed on soil with very low CBR values, such as clay and similar materials. The soft soil fills in the underlying ribbed design of the elements, further increasing stability. It is important that the soil does not sink, as in marshy or wetland areas.

The floor tiles create a "bridge effect" over the underlying ground. If there is a hole beneath an element, it can either span the hole or bend into it, depending on the size of the hole and the load. After a vehicle passes over the element, it will return to its original shape. The roadway area should also be closed in width to achieve optimal shear stress performance, especially if the roadway area has elevation changes along the length or potential cross-slope.





IPG GROUND PROTECTION TILES

With the road plate and ground protection tile concept, you get a unique product with numerous applications. The concept is perfect for flooring in areas with very high demands. These are flexible, easy-to-install ground protection tile plates with high durability. The interconnected plates are made of strong plastic and can be used on all types of outdoor surfaces, from sand and soil to grass and turf.

Road plates and ground protection tiles form a completely modular flooring system that is replaceable and expandable, capable of withstanding the weight of large trucks, forklifts, and other heavy machinery. Each tile is durable, easy to clean, slip-resistant, and contains UV additives for longer outdoor lifespan. It is also uniquely suited as a helicopter landing pad in the field. With different types of ground anchors, the landing pad can be securely fastened at the edges of the landing area.

The design makes modular flooring installation easy, while providing the stability of a strong surface. Their flexibility and strength make these road plates and ground protection tiles ideal for shop modules, pavilions, and even for building temporary roads that can support heavy vehicle traffic. Road plates and ground protection tiles are the optimal alternative to concrete in the field. And of course, they are perfect for all types and sizes of tents. They are uniquely suited to protect all types of surfaces and are optimal for use.

FITS ALL SURFACES –
FOR THE BEST RESULTS, ANYWHERE.



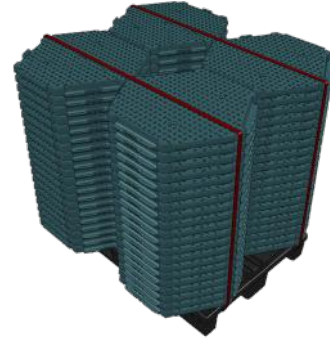
HEAVY TRUCK AND
EXCAVATOR 25,500 KG

TECHNICAL INFORMATION



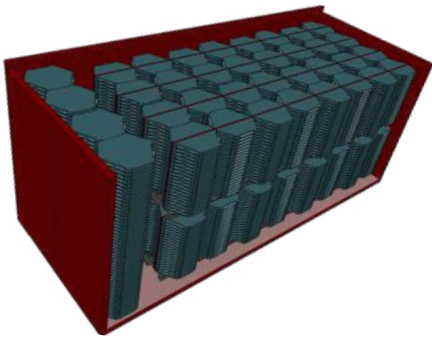
GROUND PROTECTION TILES

100% recycilat material
Weight Load: 20000 Kg / m²
Length: 630 mm
Width: 575 mm
Height: 50mm
Weight: 3,1kg
Colour: Optional
Weight m²: 11.5 kg
Temperature: -30 ° C to + 60



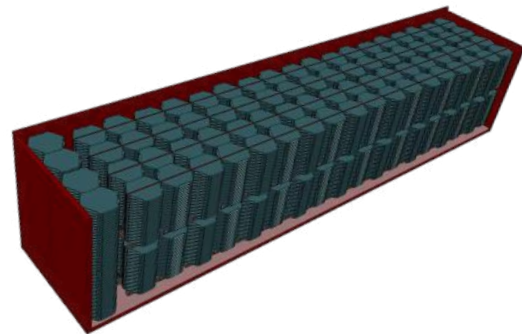
LOADING ON A PALLET 1200 X 1000 X 150 MM:

84 pcs base plates (22.68 m²)
1200 x 1200 x 1200 mm (Length x Width x Height)
Weight pallet: 260,4 kg
Double stack two pallets to a total height of 2400 mm



LOADING 20FT CONTAINER:

1344 pcs base plates (362,88 m²)
Weight container: 1344 pcs x 3,1 kg = 4166,40 kg



LOADING 40FT CONTAINER:

3024 pcs base plates (816,48 m²)
Weight container: 3024 pcs x 3,1 kg = 9374,40 kg



www.ip-group.com

IPG Intelligent Packaging Group

Skallebackavägen 24

302 41 Halmstad, Sweden

Tel: +46 35 102480

info@ip-group.com

www.ip-group.com

