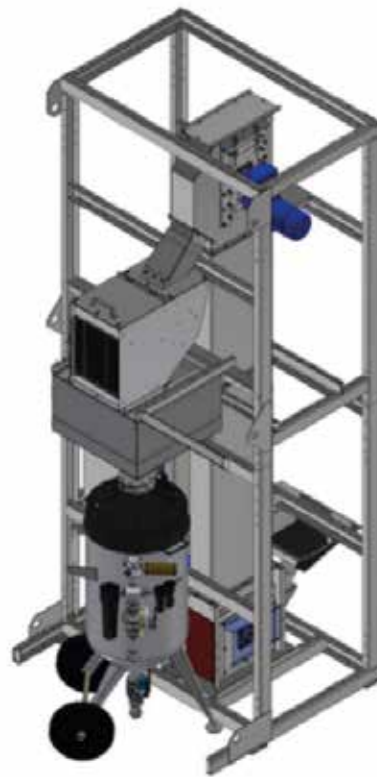


NOVABLAST

TRANSPORTABLE
ABRASIVE RECOVERY
SYSTEM



NOVABLAST BV.
NIJVERHEIDSSTRAAT 25N
3861 RJ NIJKERK
THE NETHERLANDS



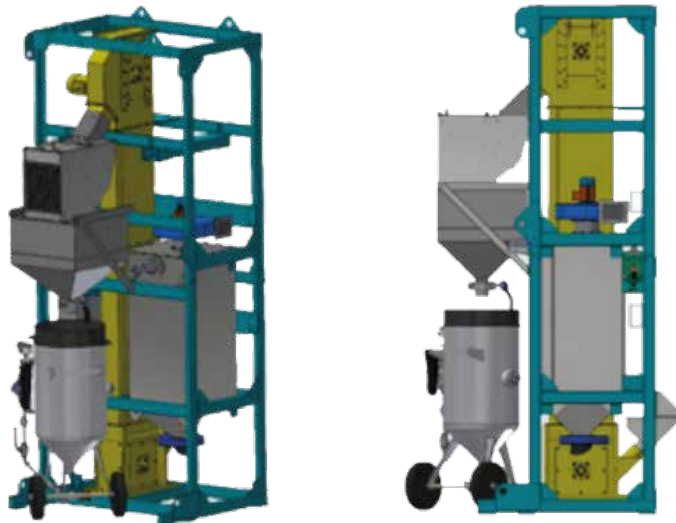
INFO@NOVABLAST.COM
WWW.NOVABLAST.COM
+31 85 444 48 90

RC-4A1 NB

The Novablast transportable Abrasive Recovery System is designed for recovering the abrasive used in blasting applications. This system is easily transportable and integrated within a frame. It consists of a collection tank, an elevator, a fixed-screen abrasive cleaner, a dust collector, and a silo. The silo can be positioned above the blasting pot. The electrical cabinet with a Siemens logic controller (PLC) manages the system's operation.

The RC-4A1 NB can be adjusted based on the abrasive being recycled. This allows precise adjustments to optimize abrasive flow and particle separation, enhancing overall effectiveness. The thoroughly cleaned abrasive is collected in a hopper, ready for immediate reuse. Engineered in Europe, adhering to the highest quality standards. Its motors and gearboxes are hermetically sealed and lubricated, ensuring longevity and reliable operation. The unit requires a 400-volt - 50 Hz electrical connection and a supply of compressed air.

* performance depends upon many variable factors

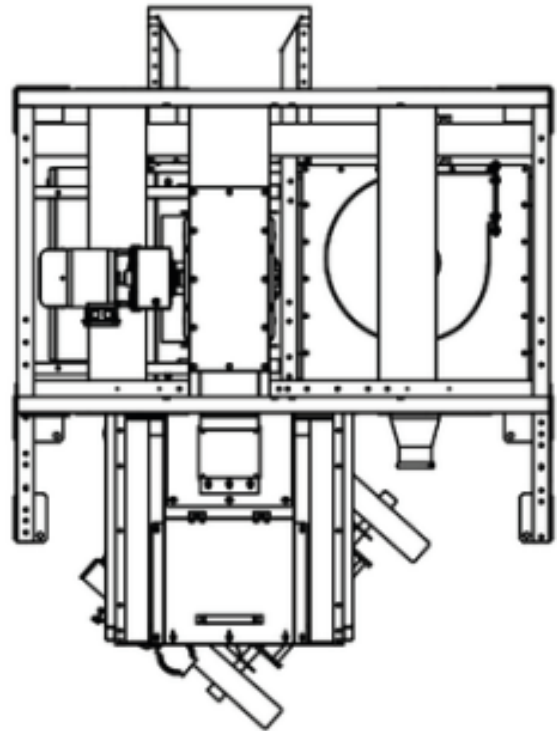
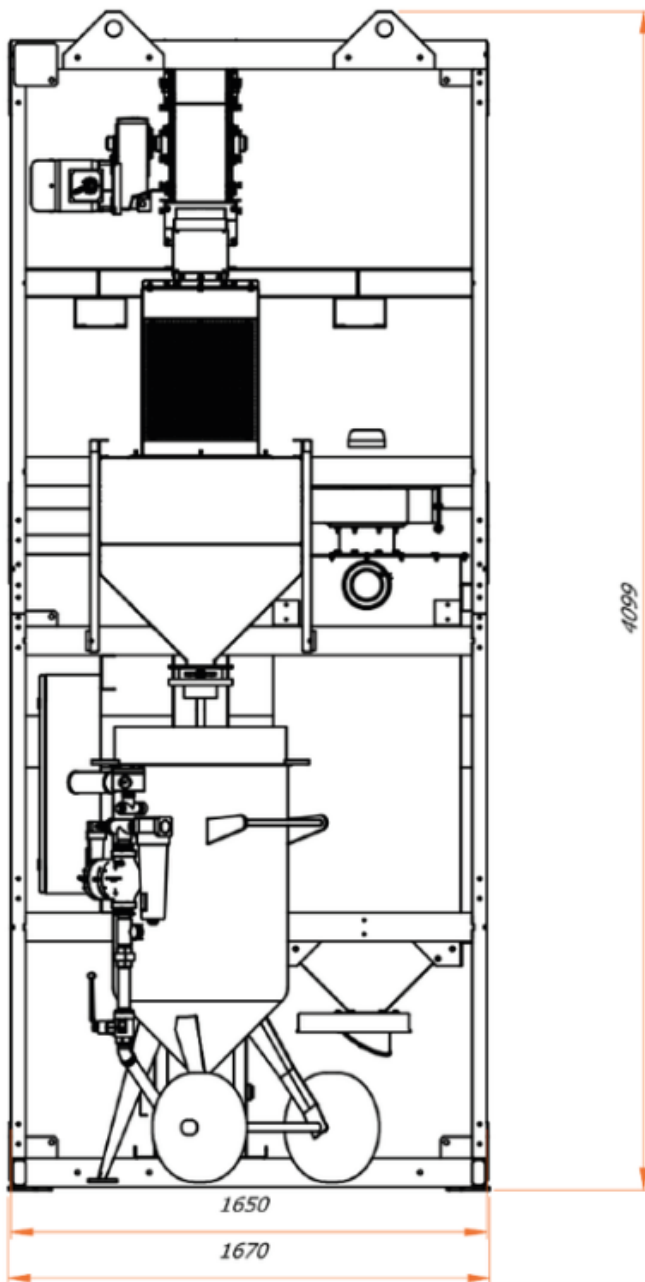


Technical Specifications

Type	Novablast Transportable Abrasive Recovery System
Model	Transportable
Capacity	3 M ³ /H
Abrasive Type	Metallic Grit (Preferable)
Feed Hopper	0.5 M X 0.5 M With Sieve
Elevator	Belt: 100 Mm - Buckets: 80 Mm
Cleaner	With Fix Sieve
Dedusting	1080 M ³ /H, 2050 Pa
Silo	200 L - Valve Dn 100
Dimensions	Length: 1730 Mm - Width: 1655 Mm - Height : 3999 Mm
Weight	1050 Kg
Electric Power	400v - 3 Phases - 2.2 Kw

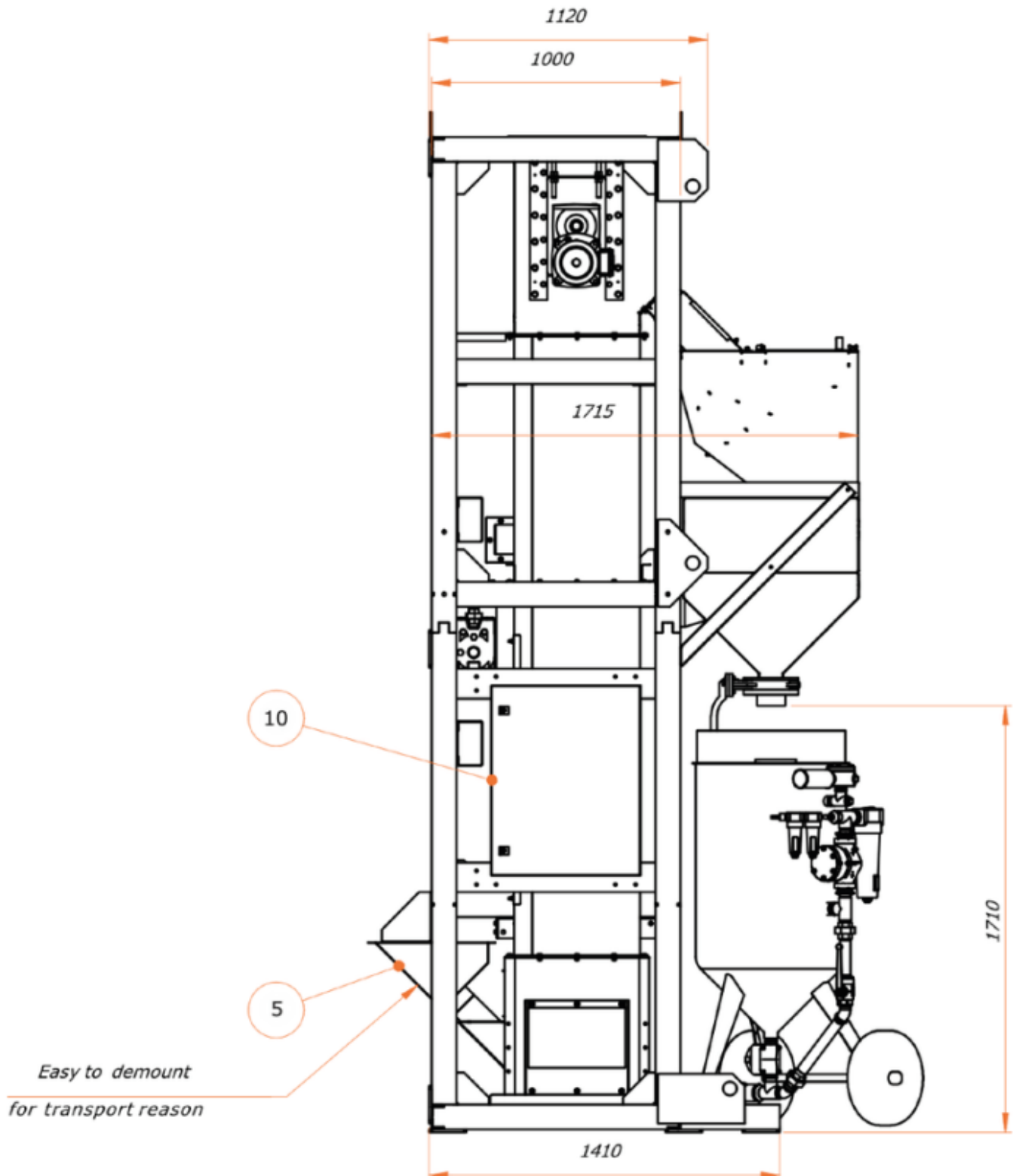


DRAWINGS



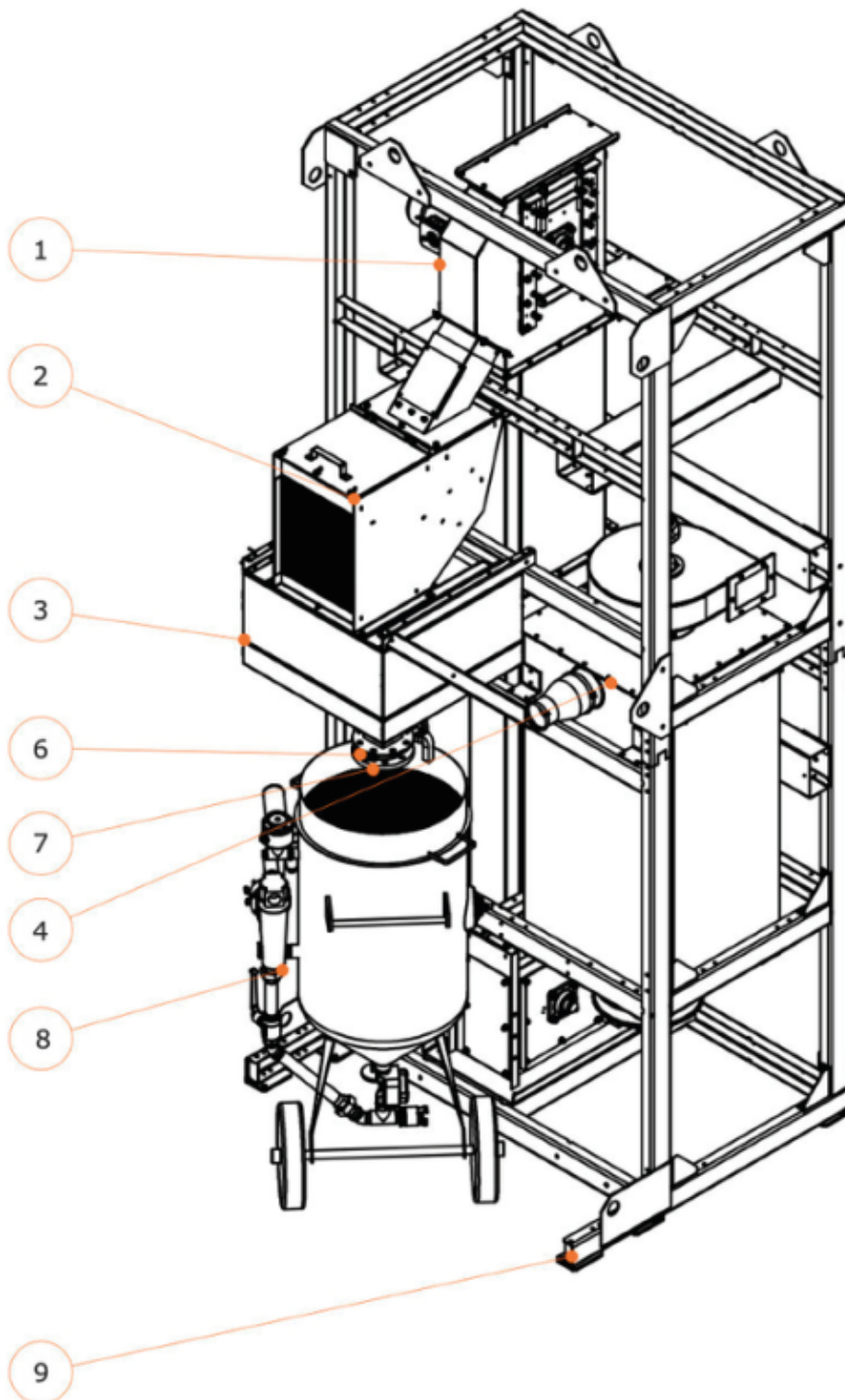


DRAWINGS





PARTS LIST



#	Technical Specifications
1	Elevator 4a NB
2	Cascade Cleaner NB-400
3	Silo 200-1
4	Cartridge Filter CF 1-8R
5	Intake Hopper
6	Manual Valve DN100
7	Counter Flange DN100
8	Blast Pot
9	Frame RC-4A1 NB
10	Electric Box