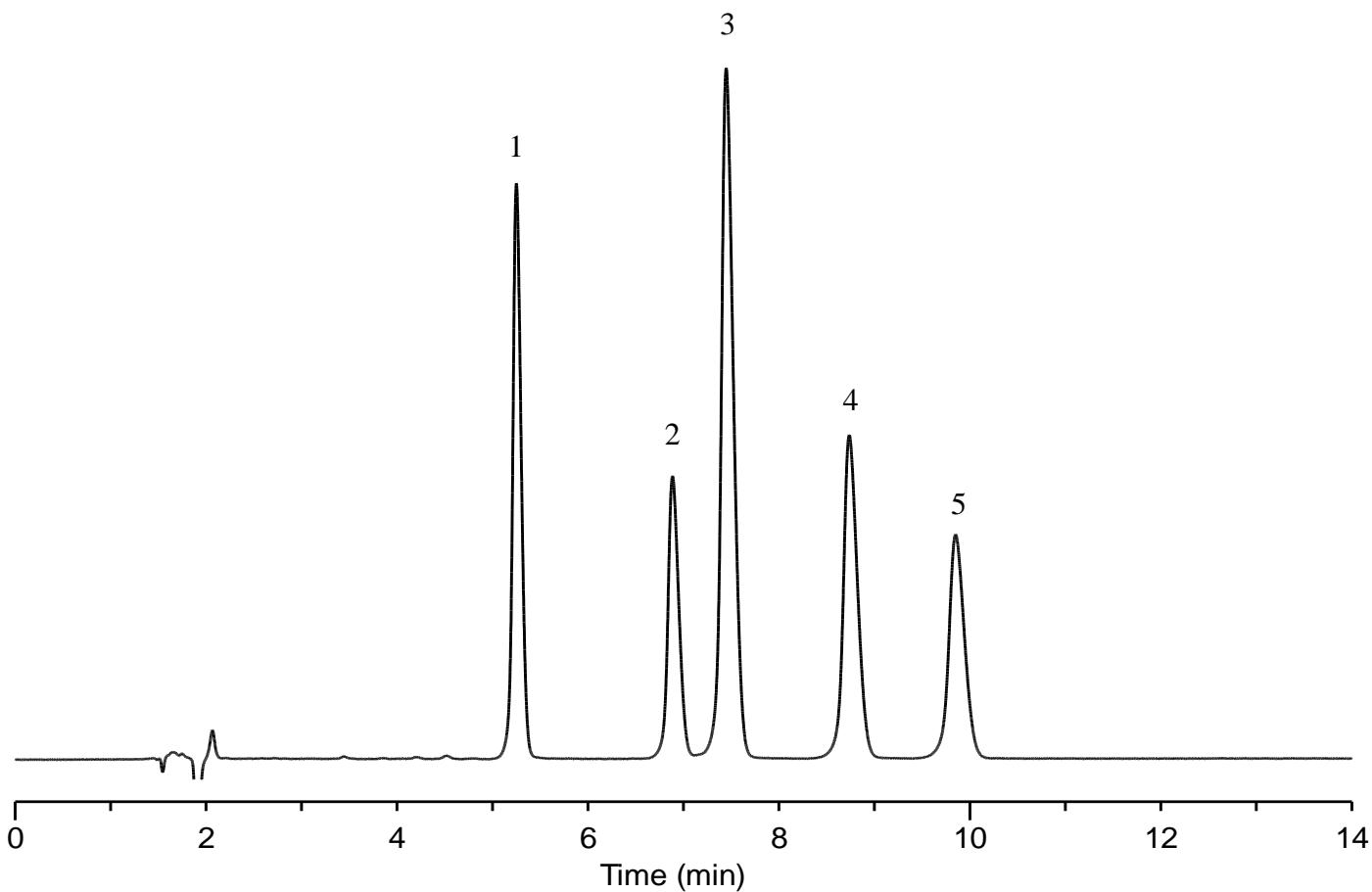


# InertSearch™ for LC

Inertsil™ Applications

## Analysis of Antidepressants

Data No. LB604-0806



### Conditions

**Column** : InertSustain Cyano HP (3  $\mu$  m, 150 x 4.6 mm I.D.)

**Column Cat. No.** : 5020-89475

**Eluent** : A) 0.1% HCOOH in CH<sub>3</sub>CN  
B) 10 mM HCOONH<sub>4</sub> + 0.1% HCOOH in H<sub>2</sub>O  
A/B = 30/70, v/v

**Flow rate** : 1.0 mL/min

**Col. Temp.** : 40 °C

**Detection** : UV 230 nm

**Injection Vol.** : 2  $\mu$  L

**Sample** : Standard

### Analyte:

1. Mianserin	100 mg/L
2. Imipramine	100 mg/L
3. Amitriptyline	100 mg/L
4. Sertraline	100 mg/L
5. Clomipramine	100 mg/L