



2023-24



February 4, 2024



CMAR Scholarship Fund

**Celebrating 55 Years of
Boston Bruins Tradition on Ice**



OFFICIAL

Chicken Sandwich

OF THE

Boston Bruins Alumni Association

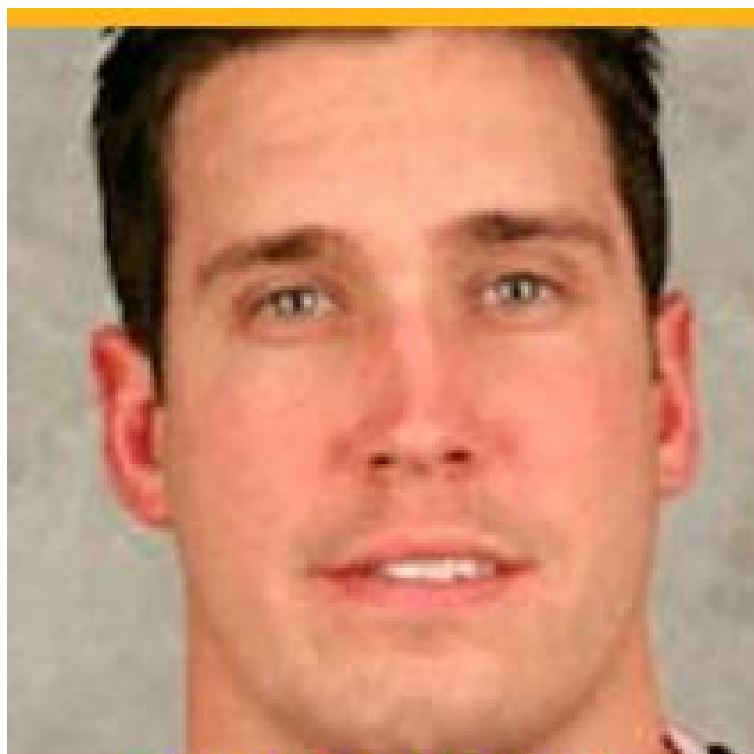

Greater Boston Area & New Hampshire



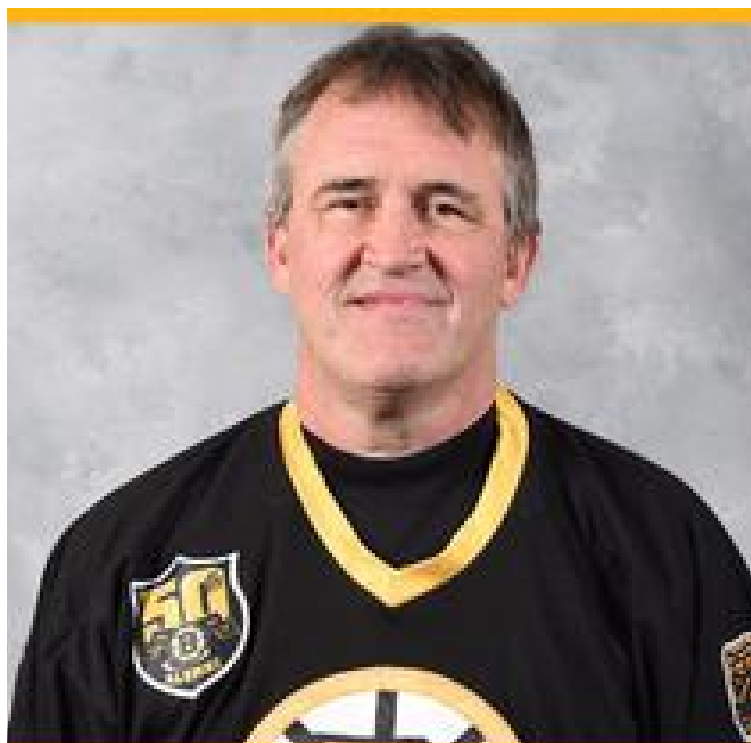
Boston Bruins Alumni Roster

#17	Coach	Tom Songin	Boston College; 3 years with Boston Bruins
#52	Goalie	Shamus Egan	Merrimack College
#10	Forward	Kenny Hodge	4 years in NHL; 2 years with Boston Bruins
#11	Forward	Joe Mullen	17 NHL seasons; 1 with Boston Bruins
#13	Forward	Ken Linseman	14 NHL seasons; 5 ½ seasons with Boston Bruins
#19	Forward	Peter Douris	11 NHL seasons; 3 with Boston Bruins
#20	Forward	Bob Sweeney	10 years in NHL; 6 with Boston Bruins
#21	Defense	Frank Simonetti	4 years with Boston Bruins
#32	Forward	Bruce Crowder	4 years in NHL; 3 with Boston Bruins
#34	Defense	Dave Shaw	16 NHL seasons; 3 with Boston Bruins
#40	Defense	Bruce Shoebottom	4 NHL seasons with Boston Bruins
#48	Forward	Graeme Townshend	5 years in NHL; 2 with Boston Bruins
#55	Forward	Mike Sandford	Son of Ed Sandford
#70	Defense	Patrick Mullen	Son of Joe Mullen
		Chris Dymant	2 years with Providence Bruins
	TBD	Mark Mowers	
	TBD	Tim Schaller	
	Guest Skater	Nick Simonetti	
	Referee	Don Garcia	

BOSTON BRUINS ALUMNI TEAM
2023-24 season



CHRIS DYMENT
Providence Bruins



BRUCE SHOEBOTTOM
1987-1991



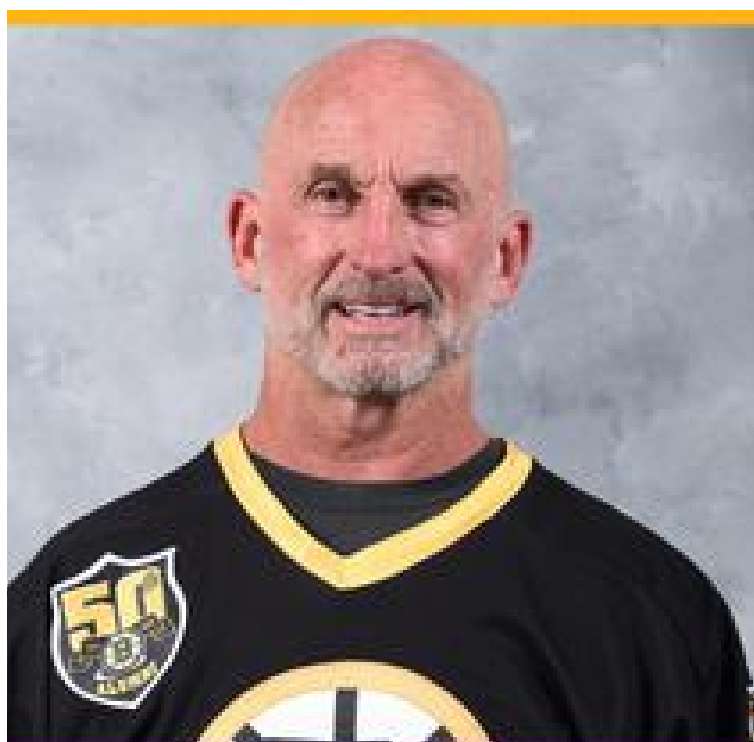
KEN HODGE, JR
1990-1992



GRAEME TOWNSHEND
1989-1991

Boston Bruins Tradition on Ice

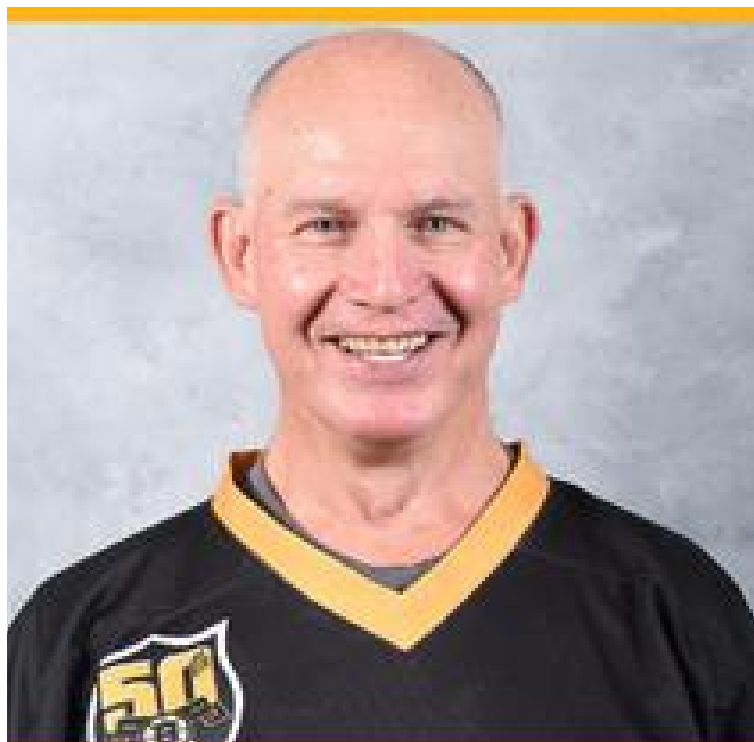
BOSTON BRUINS ALUMNI TEAM
2023-24 season



KEN LINSEMAN
1984-1990



FRANK SIMONETTI
1984-1988



JOEY MULLEN
1995-1996



DAVE SHAW
1992-1995

Boston Bruins Tradition on Ice

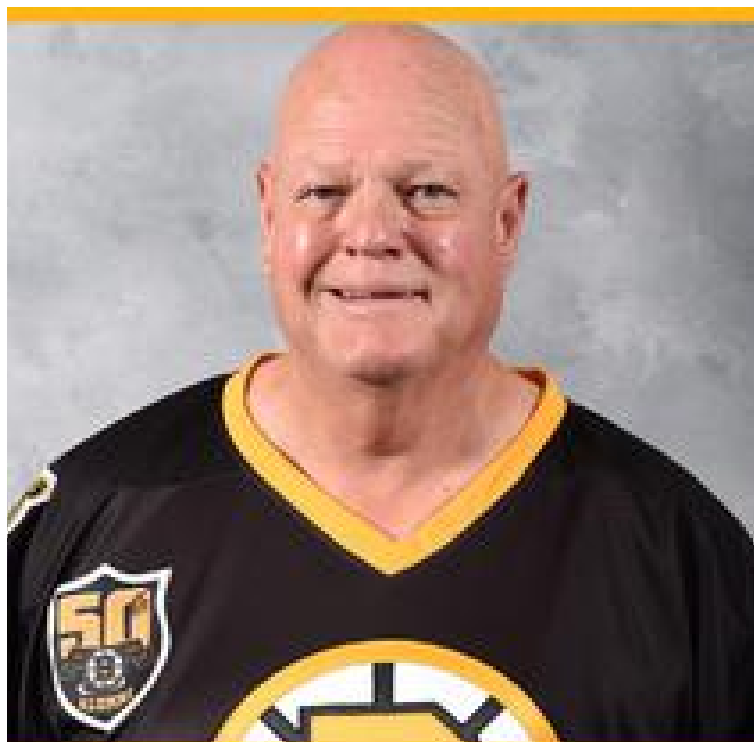
BOSTON BRUINS ALUMNI TEAM
2023-24 season



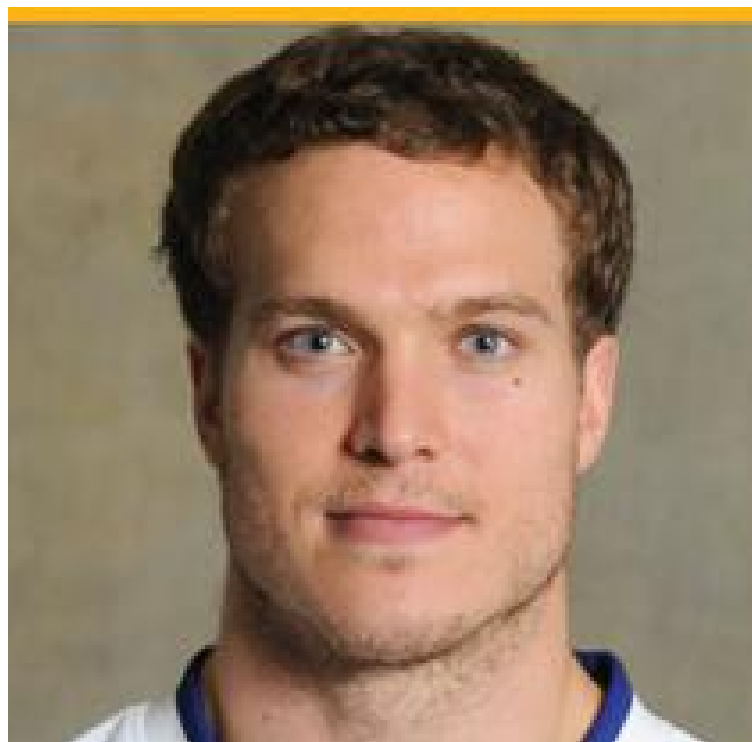
BOB SWEENEY
1986-1992



BRUCE CROWDER
1981-1984



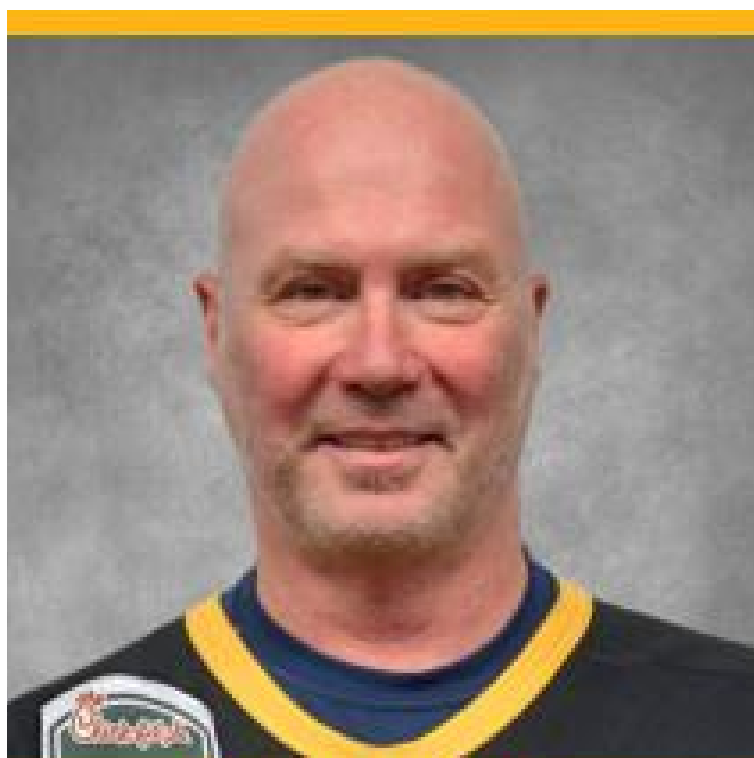
MIKE SANDFORD
Son of Ed Sandford



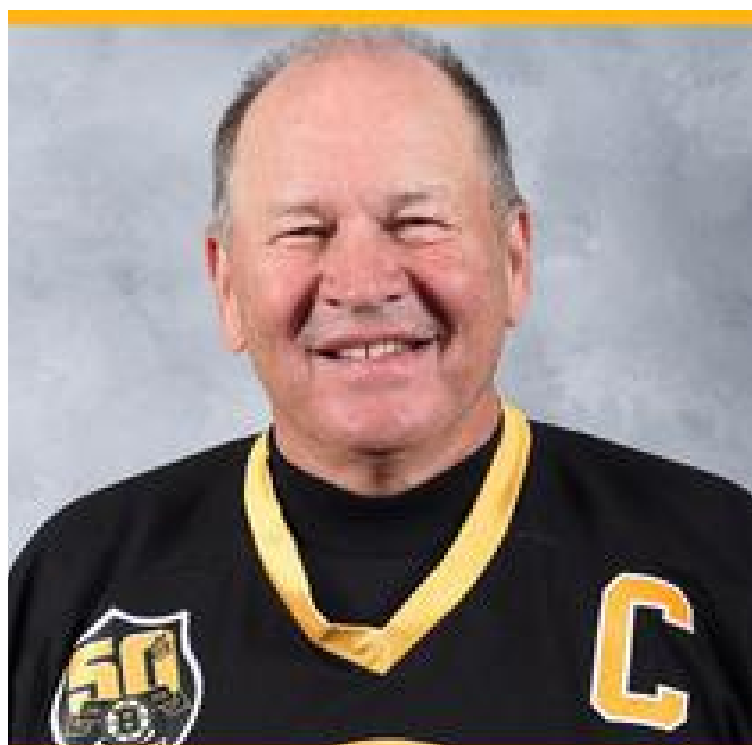
PATRICK MULLEN
Honorary Alumni

Boston Bruins Tradition on Ice

BOSTON BRUINS ALUMNI TEAM
2023-24 season



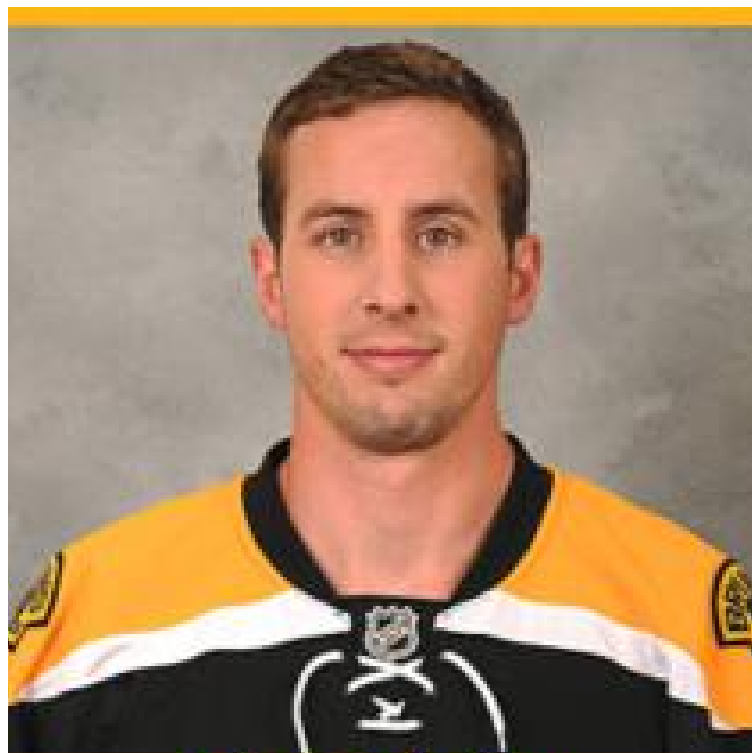
Peter Douris
1989-1993



TOM SONGIN
1978-1981



MARK MOWERS
2006-2007



Tim Schaller
2016-2018

Boston Bruins Tradition on Ice

BOSTON BRUINS ALUMNI TEAM 2023-2024 season



Kevin P. Foley
Proud Sponsor and Counsel of the
Boston Bruins Alumni

Cam Foley
Bruins 2034

Attorney Kevin P. Foley, PC
246 High Street
Newburyport, MA 01950
(978) 462-7076
kevin@kevinfoleypc.com

Karen Wonoski
Bruins Alumni Coordinator

Bob Cormier
Alumni Hockey Operations

John Horrigan
Alumni Game Announcer

Frank Walker
Alumni Trainer/Equipment MGR

Mike Foley
Alumni Trainer/Equipment MGR

Don Garcia
Alumni Game Referee

Maria Coan
Alumni Memorabilia Sales

Alex Bezanson
Alumni Trainer/Equipment MGR

Mark Willand
Media Director

Steve Babineau
Bruins Photographer

Craig Michaud
Alumni Photographer

Ned Costantino
Alumni Photographer

**Watch Today's Game on March
22 at BostonBruinsAlumni.com**

2023-24 Schedule

Saturday, November 4, 2023 at 4:00pm	DCU Center, Worcester, MA	Why Me & Sherry's House
Saturday, November 11, 2023 at 2:00pm	Warrior Ice Arena, Brighton, MA	Team Edna
Saturday, November 18, 2023 at 1:00pm	NESC, Marlborough, MA	Wes Tuttle Foundation
Sunday, November 19, 2023 at 2:00pm	Warrior Ice Arena, Brighton, MA	Mass. Down Syndrome Congress
Saturday, December 2, 2023 at 4:00pm	Warrior Ice Arena, Brighton, MA	Warrior for Life Fund
Sunday, December 17, 2023 at 2:00pm	Warrior Ice Arena, Brighton, MA	Matt Light Foundation
Saturday, January 6, 2024 at 4:00pm	Pop Whalen Arena, Wolfeboro, NH	Friends of Pop Whalen
Saturday, January 13, 2024 at 4:00pm	Berkshire School, Sheffield, MA	Berkshire County Special Rec. Team/WFL
Sunday, January 14, 2024 at 4:00pm	Tsongas Arena, Lowell, MA	Bridge Club of Greater Lowell
Saturday, January 20, 2024 at 2:00pm	Warrior Ice Arena, Brighton, MA	Warrior for Life Fund
Sunday, January 21, 2024 at 2:30pm	Skate 3, Tyngsboro, MA	Tom Smith Foundation
Friday, January 26, 2024 at 7:00pm	Wells Fargo Center, Philadelphia, PA	50 th Anniv. of Flyers 1974 Stanley Cup
Saturday, February 3, 2024 at 1:00pm	The Bog, Kingston, MA	Great Blizzard Special Hockey
Sunday, February 4, 2024 at 3:00pm	Everett Arena, Concord, NH	Stephen Cmar ROTC Scholarship Fund
Saturday, February 17, 2024 at 3:00pm	Walter Brown Arena, Boston, MA	Salesforce/Just Keep Livin
Saturday, February 24, 2024 at 1:00pm	Amelia Park Arena, Westfield, MA	Amelia Park Arena/Westfield Police Dept.
Sunday, February 25, 2024 at 2:30pm	Asiaf Arena, Brockton, MA	Brockton Fire Department
Saturday, March 2, 2024 at 2:00pm	The Colisée, Lewiston, ME	Lewiston Police Department
Sunday, March 10, 2024 at 2:00am	Rinks at Exeter, Exeter, NH	Spartans for Life
Saturday, March 16, 2024 at 2:00pm	Dover Ice Arena, Dover, NH	My Breast Cancer Support
Saturday, March 23, 2024 at 2:00pm	Warrior Ice Arena, Brighton, MA	Moments that Matter
Sunday, March 24, 2024 at 2:00pm	Larsen Rink, Winthrop, MA	Boston Bruins Foundation
Saturday, March 30, 2024 at 1:00pm	Veteran's Memorial Rink, Haverhill, MA	Haverhill Police Relief Association
Sunday, April 7, 2024 at 2:00pm	Warrior Ice Arena, Brighton, MA	Dana Farber Cancer Institute
Saturday, April 13, 2024 at 3:00pm	Quincy Ice Arena, Quincy, MA	Rucks2Pucks
Sunday, April 14, 2024 at 1:00pm	Danbury Ice Arena, Danbury, CT	Danbury Girls Hockey
Saturday, April 20, 2024 at 2:00pm	Warrior Ice Arena, Brighton, MA	Stanley Keg Games
Sunday, April 28, 2024 at 1:00pm	Benny Magiera Mem. Rink W. Warwick, RI	Central Rhode Island Knights Hockey



OVERTIME
REAL ESTATE



TD GARDEN IS PROUD TO SUPPORT THE
BOSTON BRUINS ALUMNI ASSOCIATION.



From your friends at TD Garden, proud home of the Boston Bruins.

TD GARDEN

Keep us in your sites.



Proud sponsor of the Boston Bruins: past, present and future

- Site Development
- Soil Remediation
- Earthwork

- Utility Work
- Site Improvements
- Equipment Rental

JAMES W.

FLETT

CO. INC.

EXCAVATING CONTRACTORS

800 Pleasant Street, Belmont, MA 02478 • 617-484-8500 • Fax 617-484-1279 • www.jwflett.com

YOUR TEAM, YOUR CHOICE.

We believe in building winning partnerships to protect your team for tomorrow. Whether your team is your family, business, or your employees, you can depend on Cross Insurance for the best insurance solutions.



COMMERCIAL INSURANCE PERSONAL INSURANCE EMPLOYEE BENEFITS SURETY

OFFICIAL INSURANCE BROKER



www.crossagency.com

Original Boston Garden established in 1928 Dolben established in 1929

The difference is DOLBEN

We are the Dolben Company – a dynamic real estate firm, with a family inspired culture, developing and managing best-in-class multifamily communities throughout the New England and Mid-Atlantic markets since 1929.

With our core value of stewardship, coupled with our extensive industry experience, we maximize each and every investment's potential.

We are industry-leading experts with an innovative mindset. From site selection through construction – no development detail is too small.

We always put our residents first, working tirelessly to create communities people are proud to call home.

We are committed to fostering an inclusive and collaborative company culture that inspires personal and professional growth.

LET'S GO BRUINS!

DEVELOPMENT
MANAGEMENT
INVESTMENT



Founding Member of



150 Presidential Way, Suite 220 Woburn, MA 01801 | DOLBEN.COM

**EAST COAST
METAL ROOFING**

1-844-611-ECMR (3267)
EASTCOASTMETALROOFING.COM



YOUR LIFETIME ROOFING SOLUTION.



SUGARLOAF

**The Boston
Bruins Alumni
Thank John &
Tracy Beaupre
for their
generous
support from
Sugarloaf Maine**



TRESCA

**Delicious Italian food
and traditional
hospitality in
Boston's North End.**

233 Hanover Street
Boston, MA 02113
p: 617-742-8240
f: 617-742-8246

info@trescanorthend.com



**94 HIGH ST. (RTE. 35) ·
DANVERS, MA 01923
TUES - FRI 9AM - 8PM ·
SAT 9AM - 5PM
· 978-777-7278
(978-77-SPA-78)**

www.maisonesthetique.net





Luxury Transportation

AAM 

Real Estate Investment & Management

David R. Masse

CEO/ Founder

Ⓜ **WARRIOR ICE ARENA** Ⓜ



"Official Practice Arena"



"Official Home Arena"



ATTENTION!

- › Carpenters
- › Electricians
- › Plumbers
- › HVAC
- › Landscapers
- › Other Contractors

Want to save money on your insurance? Talk to us.
Get a free 2nd opinion. Give us a chance...you've got nothing to lose!

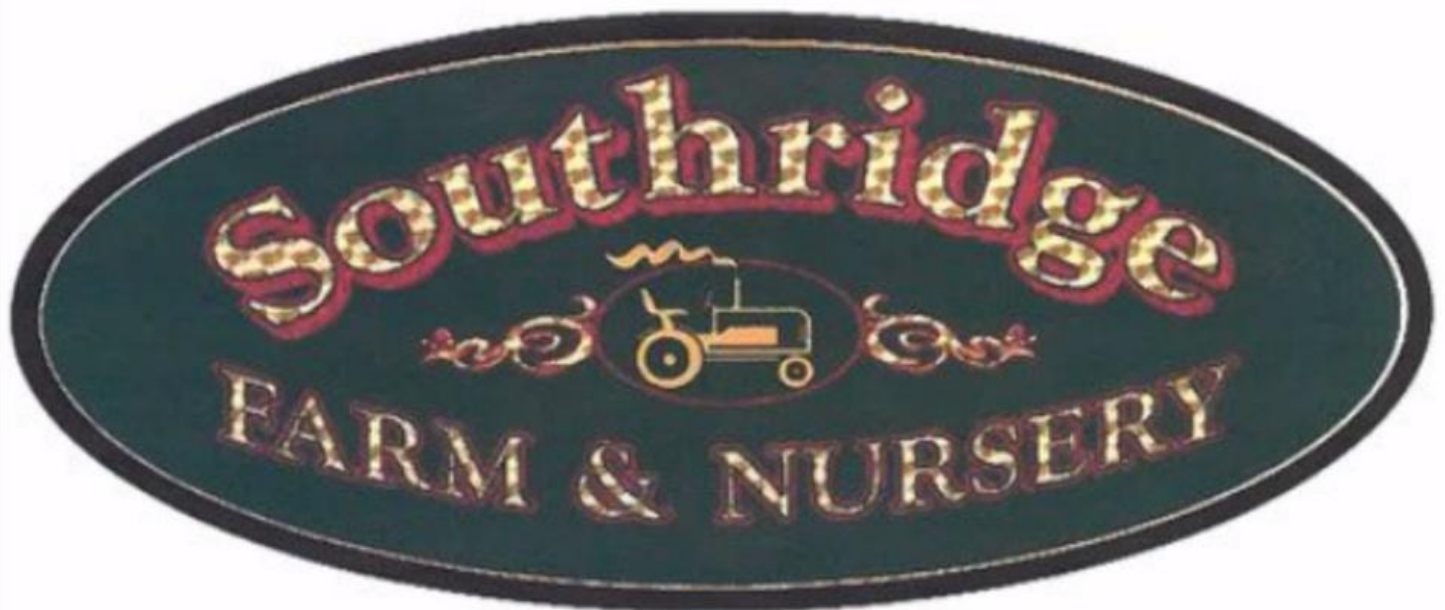
PROPERTY LIABILITY COMMERCIAL AUTO UMBRELLA EMPLOYEE BENEFITS
WORKERS' COMP BONDS EMPLOYEE BENEFITS DISABILITY LIFE



508 787 5177



businessinsurance@dfmurphy.com



Avidia has your back.

We are proud to support the
Boston Bruins Alumni.



Honest to goodness.  **Avidia Bank**

Member
FDIC



Member DIF

NMLS# 422902

avidia.com



AHIHA is much more than just a place where athletes learn how to skate and shoot pucks. It is an organization that works hard to help its participants to achieve goals and become successful in life and hockey.



"I will never forget the first day in the locker room when the kids looked around the room and were surrounded by kids just like them – the looks on their faces were priceless! They were in awe!! We soon found out it wasn't "just a hockey camp", it is so much more! We found a new family." Karen Gintoli, mother of 2 deaf hockey players (Bronze medal team, 2015 Deaflympics)

AMERICAN HEARING IMPAIRED HOCKEY ASSOCIATION

To Make A Contribution: On our website: www.AHIHA.org
Or to contact us: by phone (978)922-0955 by Email kkmm2won@aol.com

AHIHA is funded entirely by contributions and staffed by volunteers



Killington



LEGS[®]

LEGACY EQUITY GROWTH SERVICES



PJ HAYES INC.
EXCAVATING

399 SOUTH ST. WALPOLE MA 02081 | 508-668-9710



Rt. 28A & County Rd. • Cataumet, MA
www.courtyardcapecod.com

508-563-1818

*Owned & Operated by
Jay Miller*



ADVANTAGE Trucking LLC

Sportshots

Photography by Ned Costantino

115 Harvey Circle, Hanson, MA 02341 c781.789.6276
photographybyned@comcast.net



Proudly serving the Boston Bruins Alumni

— CERTIFIED PUBLIC ACCOUNTANTS —

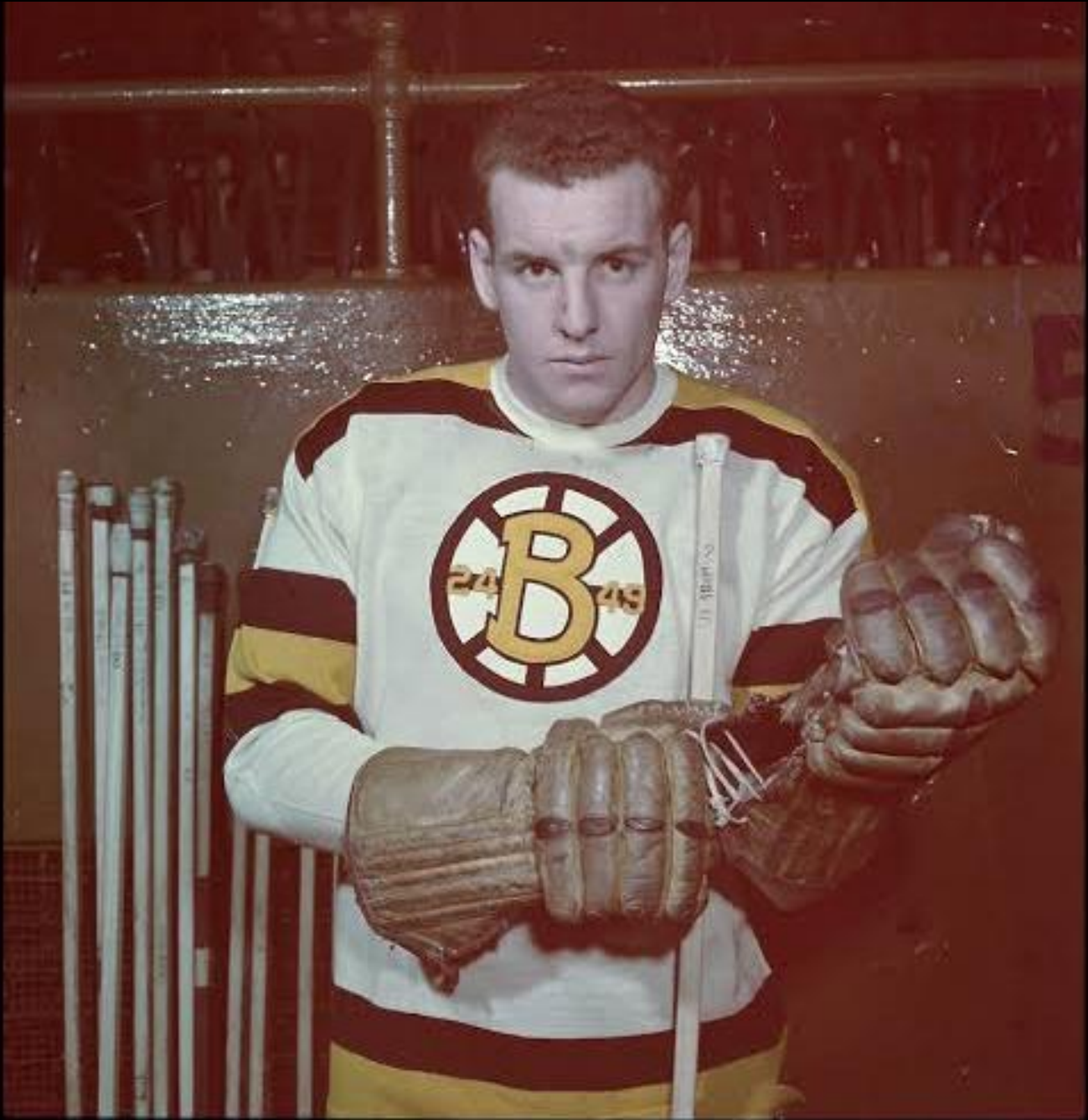
JOSEPH MAVILIO, CPA

27 Water Street • Suite 113
Wakefield, Massachusetts 01880

Telephone (781) 246-5154
Fax (781) 246-5158

e-mail: joe.mavilio@maviliocpa.com

*In Memory of our
Departed Friend*



**ED SANDFORD
1928-2023**