

INFRAME  
GARDEN ROOMS

# Garden Rooms

More than “just” a garden room,  
it's an extension of your home



# Your Garden Your Rules

Your home is unique. Shouldn't your garden be too? You're in control, with a customisable space that's designed to reflect the way you live.

We create beautiful garden buildings using benchmark design, structure and finishes. Our long history, brilliant in-house teams and design focus are at the heart of InFame's ethos.



25 year steel frame guarantee



10 year insurance backed guarantee



5\* Personal Service



Highest quality materials and finishes



British Made

# A simple 4 step process

01

## **PROJECT CONSULTATION, QUOTATION AND YOUR COMPLIMENTARY DESIGN**

Book a design consultation and we will get to work on your project, it's all part of our 5\* service

02

## **DESIGN CUSTOMISATION**

Your custom designs are created by the InFrame design team for your review and approval, with drawing revisions included as standard for those all-important tweaks.

03

## **SITE SURVEY**

Once you're completely satisfied with your design you will meet your designer to finalise the project details, we'll check your site dimensions and survey the space and any requirement for services.

04

## **PLACE YOUR ORDER, WATCH THE BUILD AND THEN ENJOY**

Once we have received your deposit, your steel frame will be put into production. Installation will then begin in approximately 8 weeks and soon be ready for you to enjoy!





# Show Sites in London and the Home Counties

During the design process we'd love to take you on the next step of your journey by arranging a visit to one of our show sites.

Experience the exceptional quality of our garden rooms first hand and have the unique opportunity to meet our existing clients.

We will guide you every step of the way and can tailor an experience that's just right for you.





# Screw Pile Foundations

No need for digging, or intrusive excavation. Screw Piles are the quickest and strongest foundations for your garden room.

- | No weather constraints
- | No need for extensive groundworks
- | No skips
- | Kind to roots and surrounding vegetation
- | No concrete
- | Precision Installation
- | Ready for immediate use
- | Environmentally sustainable



INSTALLED IN HOURS NOT DAYS





# Steel Frame Garden Rooms

Whatever you are using your garden room for, you want to make sure that your space is built to last. This is why we offer a **25 year guarantee** on our steel frames.



- | Strong and durable
- | No rot, no movement, no deterioration
- | Design flexibility
- | Precision manufacturing
- | Lasts a lifetime



STEEL FRAMED GARDEN ROOM, WHY WOULD YOU DO IT ANY OTHER WAY?

# The Vantage Range







## The Vantage Range

There's a reason we made the Vantage our original design. It has been designed and crafted to precision accuracy and allows for maximising the space in your garden.

The clean sight-lines and bold rectangular space make the Vantage a design gem for any garden setting.

Included:

Screw pile foundation system | Steel frame walls, floor and roof | 2.4m Sliding doors | 1.2m Wide opening window | Electrics pack | Plastering | Interior painting | Western Red Cedar / Composite Cladding Range | Karndean flooring | 25-year structural warranty + Optional Extras





## Multi-Use Space

A garden room tailored to your tastes and needs opens a world of possibilities for work and multi-use functionality. Whether you looking for a sleek and professional home **office**, a versatile **family space** for activities, or a quiet retreat for **relaxation** and hobbies, every element can be customised to suit your lifestyle. The adaptability of a Vantage garden room means you can create a seamless extension of your home, offering all the comforts of an indoor space while embracing the tranquillity of your outdoor surroundings.

*Choose the Vantage Range, customise and make it yours...*

Window and door options

Canopy and composite deck options

Bespoke deck option

Cladding options:  
Luxury Millboard,  
Western Red Cedar,  
Hardie Plank and  
Composites

Book your  
on site  
Consultation







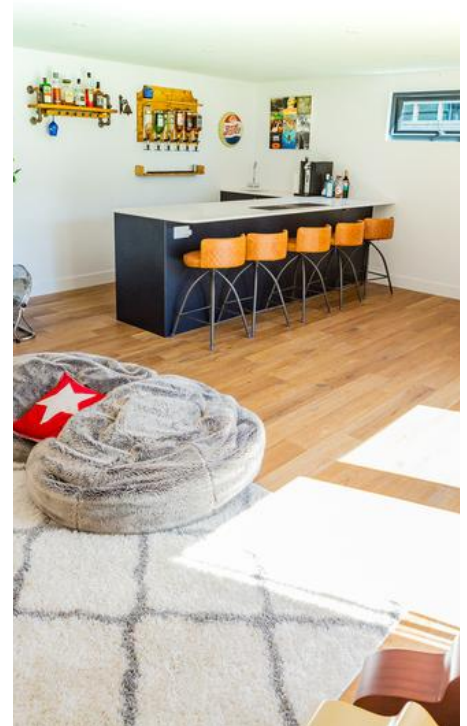




## CHEERS



The ultimate garden bar!  
What better way to entertain friends and family than with your own garden bar and chill space. Create your own signature drinks and cocktails, impressing your guests with your mixology skills.



# The Panoramic Range







## The Panoramic Range

Welcome the light in and soak up the panoramic views of your beautiful garden.

Allowing in more natural light can make you feel happier, healthier and more productive.

Making this the perfect garden room for:

- Fitness Studio
- Art Studio
- Golf Room
- Relaxation Area
- Pool house
- The choice is yours

Customise your panoramic garden room with a corner post to match your cladding or choose sleek aluminium pressings to match the doors. This is bold striking design at its finest, with clever engineering to match.

Included as standard:

The same as a vantage with the addition of a Slimline Corner Post and 1.2m glazed corner return.

Customise with matching sliders or Aluminium bifold doors.





## Games Room

A garden games room is the perfect way to bring entertainment home, offering a dedicated space for fun and relaxation. Whether you're into pool, table tennis, gaming, or even a home cinema setup, a purpose-built games room allows you to enjoy your hobbies without taking over your main living areas.

## Studio

Find a spot of peace with a garden studio. Whether it's for art, yoga, or music, a private studio lets you work at your own pace while shutting out distractions, creating the perfect peaceful retreat. space for you.

“

*Exactly what I wanted! And an amazing service! Great team with an eye for details!”*  
~ Dilraj

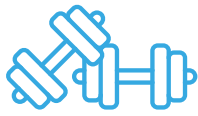




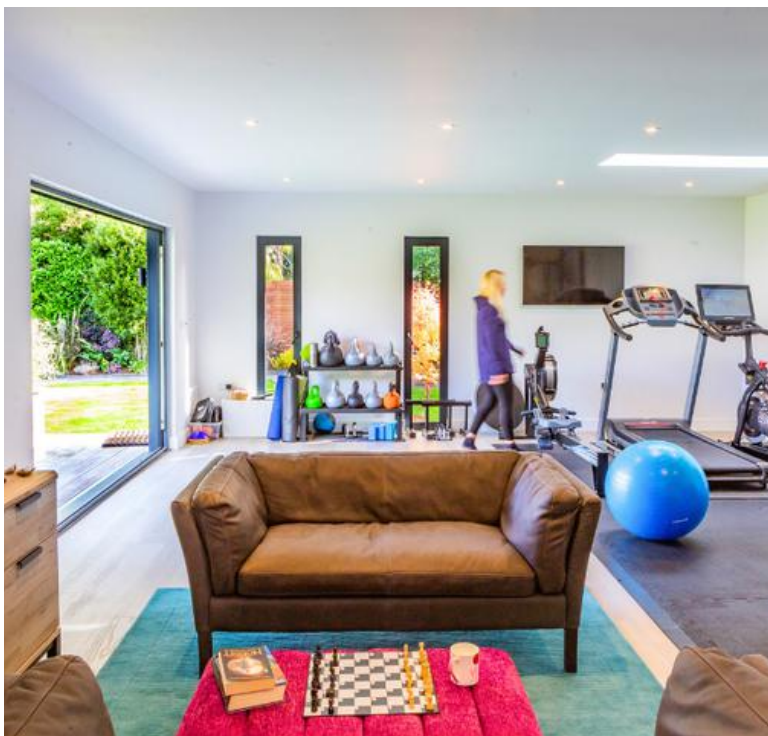




## GET YOUR GYM ON



Our clients were looking to add a full gym, including treadmill, rowing machine and spin bike, as well as a weights area with full sized machine and bench press. The annex also includes two wall mounted TV's, a lounge area, kitchenette and shower room.





# The Aspire







## The Aspire Range

Whether you've got a big dream or just the flicker of an idea, we are here to take your grand design and bring it to life.

An Aspire garden room is more than just a space; it's a statement of individuality and sophistication.

Designed for those who are looking for both style and functionality, it offers a retreat that blends luxury with the beauty of the outdoors.

Whether for relaxation, games or entertainment, an Aspire garden room elevates your lifestyle with a unique, custom-built space tailored to your needs.

Designed for those who appreciate the extraordinary, our Aspire bespoke garden rooms are more than just ordinary, offering a blend of elegance, functionality, and tailored beauty. Discover the unparalleled craftsmanship that transforms your garden into a bespoke space, reflecting your individual taste and enhancing your lifestyle.

*-Your home is unique, Shouldn't your garden room be too?*



# FROM DESIGN TO COMPLETION



We take our clients' vision and transform it into their dream space, ensuring every detail is meticulously catered.

A bespoke Aspire garden room is a blank canvas awaiting personalisation.

Every design decision, from exterior features to interior elements, is an opportunity to tailor the canvas to the owner's taste.

YOU BRING THE VISION, WE'LL DO THE WORK

With 20 years of experience, our pioneering InFrame in-house designers are ready to take your rough plans and turn them into

Something extraordinary.

Something unique.

Something just for you.

“

*If I could give 6\*  
I would.”  
~ Kelvin*

YOUR DREAM  
SPACE -  
**REALISED**









## The Annex Range

When looking to expand your living space you want to do it right. We prioritise excellence at every stage of the process. With our in-house annex specialists who are experts at design and planning, we deliver an unparalleled service and an outstanding product that sets the standard.

Homeowners can gain more space with a garden annex without the upheaval and expense of a loft or rear extension, which can be very costly and disruptive to the family. This is particularly beneficial when space in your home is limited.



*-Less disruption than an extension*



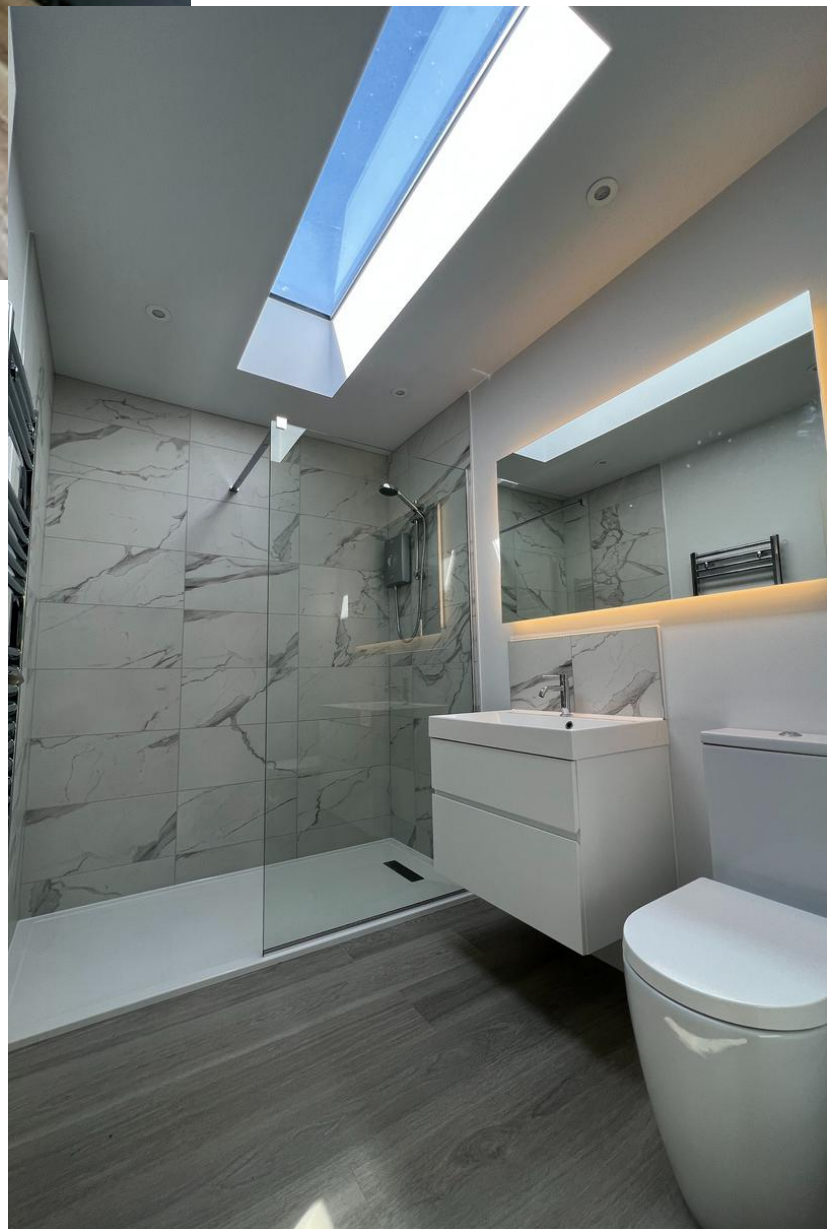


Enhance your living space and increase your property's value with a garden annex solution, all while avoiding the challenges of traditional extensions.

This innovative option provides a practical and cost-effective way to upgrade your home without the hassle of relocation or major renovations.

At InFrame, we believe your bathroom and kitchen should be a perfect blend of style and practicality. That's why we've hand-selected a range of high-quality Bathrooms and Kitchens to help you design a space that works beautifully for your annex.

*-Now you can merge functionality with beautiful aesthetics.*







## GET A STUNNING PLACE TO HOST

Whether used as a guest suite for one night or two, a high-quality garden annex provides comfort, functionality, and privacy.

## ADDITIONAL LIVING SPACE IN YOUR HOME

If you need to care for elderly relatives permanently, but don't have the space in your property, then our Granny annex is the perfect solution.

## ADD VALUE

A garden annex is a smart investment that brings genuine value to your home, offering a self-contained living space with endless possibilities. Designed with luxury finishes and built to last, it's not just an addition to your garden—it's an extension of your home that adds real value for years to come.

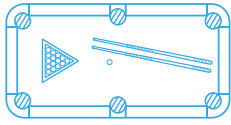
Compact  
Spacious  
Two Room





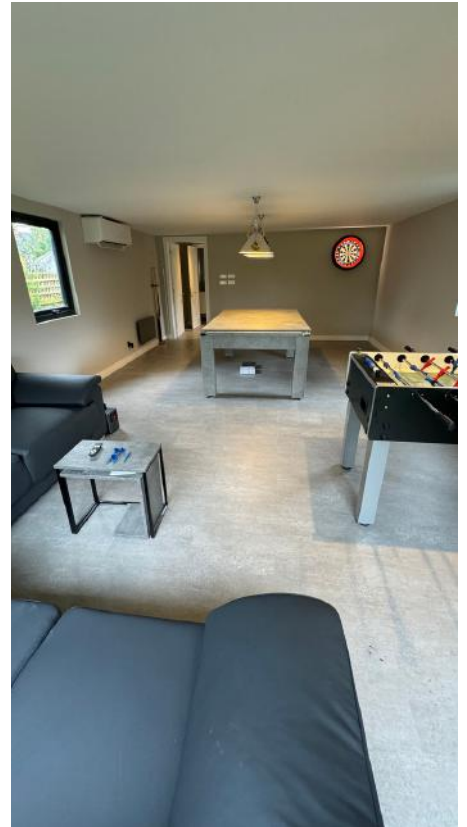


## TEEN ROOM



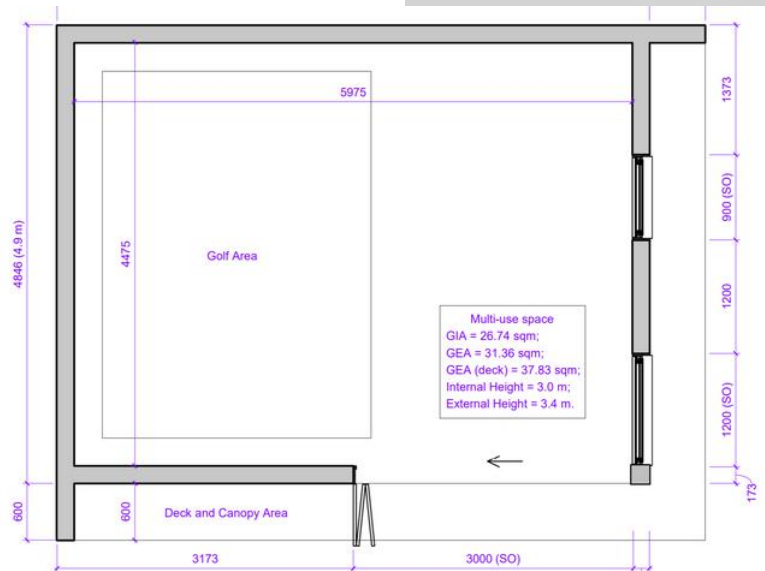
We worked closely with our clients on the design and implementation of this stunning space.

The main room is a family room and entertaining space. The family can enjoy hours of fun with the table football, pool table and darts as well as relaxing on the sofas.





# Planning Support for Your Garden Room or Annex



When it comes to planning, our team has vast knowledge and expertise. Whether your project falls under **permitted development** or requires a **full planning** application, we are here to guide you every step of the way to ensure a successful outcome.

## Our planning Services

### | Expert Planning Advice

From initial consultation to approval, we'll help you navigate the planning process with confidence.

### | Full Planning Applications

We manage the entire process, making it as stress-free as possible.

### | Scaled Drawings

Accurate, professional drawings to support your application.

### | Lawful Development Certificates

Ensuring your build complies with permitted development rules.

With a 90% success rate in 2024, our team is committed to helping you turn your vision into reality. From the first steps to final approval, you're in safe hands with us.

Planning for Annexes and Garden Rooms depends on:

Height  
Area and Size  
Use  
Location  
Listed Buildings  
Designated Areas  
Property type

“

*Professional and  
reliable  
throughout the  
process.”*

*~James*

We are the  
industry authority  
to talk to.



# INTERIOR





## NO TWO ROOMS ARE THE SAME

---

Our design process is centered around your unique vision and requirements. We'll collaborate closely to create a garden room that perfectly reflects your needs

## DESIGN SERVICE

---

Our complementary design service ensures your garden room or annex perfectly suits your space and lifestyle. You'll receive detailed **floor plans** and **3D images**, giving you a clear vision of your project before the build begins.







VANTAGE RANGE



PANORAMIC RANGE

PRICE RANGE						
x	3m	4m	5m	6m	7m	8m
3m	9m2	12m2	15m2	18m2	21m2	24m2
Vantage	£18,980	£20,700	£22,000	£23,970	£25,400	£27,260
Panoramic	£20,280	£22,000	£23,300	£25,270	£26,700	£28,560
4m	12m2	16m2	20m2	24m2	28m2	32m2
Vantage	£20,700	£22,240	£24,630	£27,260	£28,920	£31,370
Panoramic	£22,000	£23,540	£25,930	£28,560	£30,220	£32,670
5m	15m2	20m2	25m2	30m2	35m2	40m2
Vantage	£22,000	£24,630	£27,720	£30,100	£33,840	£38,810
Panoramic	£23,300	£25,930	£29,020	£31,400	£35,140	£40,110
6m	18m2	24m2	30m2	36m2	42m2	48m2
Vantage	£23,970	£27,260	£30,100	£34,820	£39,110	£44,840
Panoramic	£25,170	£28,560	£31,400	£36,120	£40,410	£46,140

**Included as Standard:** Screw pile foundation system | Steel frame walls, floor and roof | 2.4m sliding doors | 1.2m wide opening window | Electrics pack | Plastering | Interior painting | Western Red Cedar / Composite Cladding Range | Karndean flooring | 25-year structural warranty |

All prices plus VAT

**Panoramic Standard:** As above with the addition of Aluminum Clad Corner Post | 1.2m glazed corner return

We offer even more customisation to your space with optional upgrades:  
 Bifold doors | Bifold windows | Bespoke glazing | Partitioned Storage Areas | Climate control | Integral blinds | Roof canopy | Sedum living roof | Acoustic pack | Millboard composite cladding | Millboard composite decking | Shower rooms | W/C | Kitchens | Kitchenette's | Smart Tech |

**Full installation by InFrame's experienced quality craftsmen**



# INFRAME

## GARDEN ROOMS

### Contact Details

 0204 5512577

 [connect@inframegardenrooms](mailto:connect@inframegardenrooms)

 [www.inframegardenrooms.co.uk](http://www.inframegardenrooms.co.uk)

