



BagantiTM

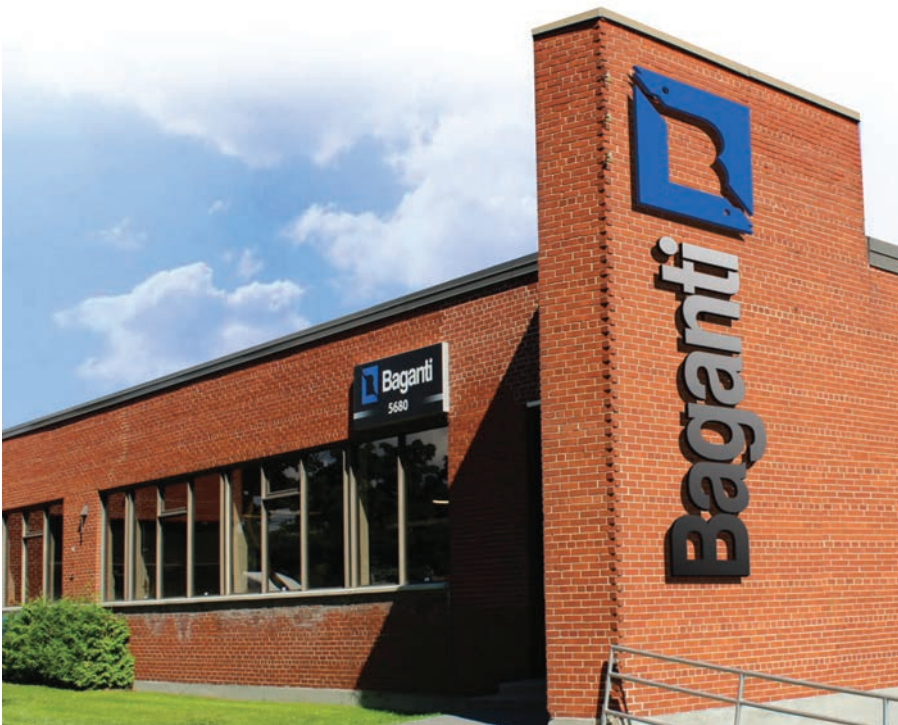
Retail Display Solutions

2024

Baganti™

Retail Display Solutions:

At Baganti™, we prioritize personalized service to meet the unique needs of every project. Specializing in high-quality, large-format fabric, we bring your vision to life with our premium SEG fabric displays, available in both non-lit and back-lit options. Our exclusive LED lighting systems, retail displays, and custom luminous architectural solutions are crafted to elevate brand presence and deliver impactful visuals. Each product is meticulously produced in-house to guarantee superior quality and a tailored approach. With precise colour matching, an expansive range of fabrics, and advanced lighting technology, Baganti™ provides the ideal partnership for your projects. Our team collaborates closely with you, offering deep industry expertise and value engineering solutions to optimize costs without compromising quality. Known for exceptional craftsmanship, our installation teams consistently deliver high-quality results. Baganti™ has gained the confidence of top-tier brands, retailers, exhibition contractors, event organizers, architects, lighting designers, and electrical contractors as a reliable partner in the industry.



INDEX

4	non-lit single-sided
12	non-lit double-sided
20	back-lit single sided
23	back-lit double sided
27	light guided acrylic panels
29	high-output single-sided
30	high-output reverse-sided
31	high output double-sided

NON-LIT SEG FRAMES

Non-lit SEG (Silicone Edge Graphics) frames and displays offer a sleek, versatile solution for the large format and retail industries. Unlike traditional displays, non-lit SEG frames rely on high-quality fabric graphics and precise framing to create a visually compelling presence without requiring illumination. This makes them an ideal choice for a range of indoor applications where lighting may not be necessary, yet impactful visual appeal is essential. The result is a clean, modern presentation that draws attention to the graphic itself, rather than additional lighting elements. Non-lit SEG frames offer a minimalist elegance perfect for retail environments, tradeshow displays, and showrooms, where creating a streamlined look is a priority.

One of the primary advantages of non-lit SEG displays is their ease of use and low maintenance. These frames are designed for simple setup and effortless graphic changes, enabling brands to update visuals quickly and efficiently to align with new campaigns, seasonal themes, or promotional events. The lightweight construction of non-lit SEG frames further adds to their adaptability, making them easy to install and move, even in high-traffic retail spaces. With no wiring or power requirements, non-lit frames provide an eco-friendly alternative that reduces energy consumption while still delivering a powerful visual impact.

SF 017

Overview

This sleek, ultra-low profile frame features a recessed groove around the perimeter, expertly designed for the easy installation of silicone edge graphic (SEG) banners. The result is an upscale, frameless appearance that displays vibrant graphics seamlessly from edge to edge. With a tool-free design, the SEG banner can be effortlessly replaced, making updates quick, straightforward, and cost-effective.

Applications

This frame's close-to-wall fit allows it to blend beautifully with any surrounding environment, creating a polished, integrated look that enhances visual appeal without distractions. Perfect for retail spaces, interior commercial settings, and residential design, this frame provides a versatile display solution that fits both high-traffic and luxury environments, allowing for sophisticated, impactful brand storytelling.



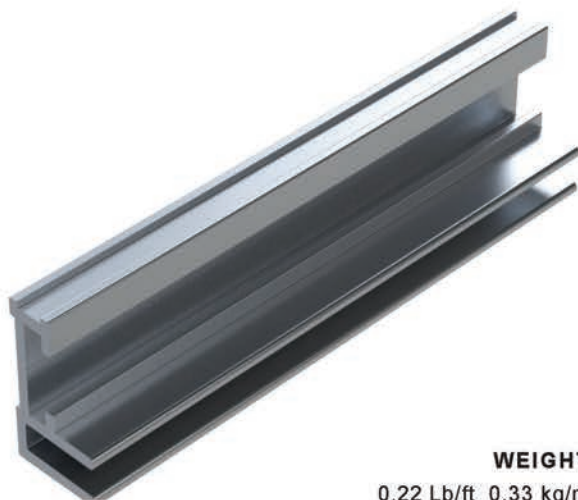
Anodized



White



Black



WEIGHT
0.22 Lb/ft 0.33 kg/m



PROFILE DIMENSIONS



ACCESSORIES
Mounting Bracket



LOCK-SYSTEM
Standard L

SF 040

Overview

This single-sided frame is engineered for a clean, edge-to-edge frameless look that enhances any display. With a built-in channel along the perimeter, it allows for quick and easy installation of silicone edge graphic (SEC) banners, delivering a polished and professional presentation every time.

Applications

Ideal for retail applications seeking to showcase bold, large-format visuals with an upscale finish, this frame's design ensures high-impact, seamless graphics that captivate customers. Its medium depth also makes it well-suited for interior design applications, such as displaying artwork or setting an inviting ambience in commercial and residential spaces.



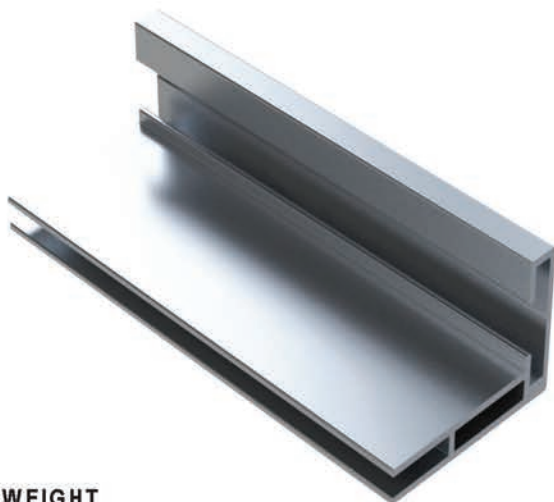
Anodized



White

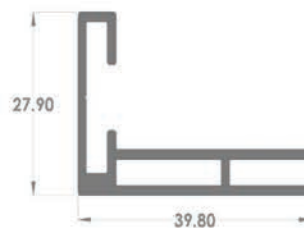


Black



WEIGHT

0.34 Lb/ft 0.52 kg/m



PROFILE DIMENSIONS



ACCESSORIES

Mounting Bracket



LOCK-SYSTEM

Angled L

SINGLE-SIDED

SF 043

Overview

This medium-depth, single-sided frame is designed to provide a sleek, upscale, frameless appearance, displaying graphics seamlessly from edge to edge. Featuring a perimeter channel for effortless installation, the SEC banner can be quickly and easily replaced without tools, ensuring a smooth, fast assembly process every time.

Applications

Ideal for corporate offices, this frame is perfect for showcasing large-format promotional graphics with a polished, professional finish. Its refined, frameless design makes it a standout choice for any space where impactful visuals are key.



Anodized



White



Black

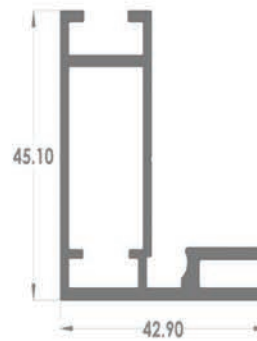


ACCESSORIES
Mounting Bracket



WEIGHT

0.59 Lb/ft 0.88 kg/m



PROFILE DIMENSIONS



LOCK-SYSTEM
Tension-Lock

SINGLE-SIDED

SF 076

Overview

The SF 076 is a medium-depth, single-sided display frame specifically designed for silicone edge graphic (SEG) banners, offering a seamless, edge-to-edge presentation.

Applications

Ideal for retail environments, the SF 076 functions as a sleek, wall-mounted display that enhances any visual. Its versatile design also makes it an excellent solution for signage across a range of high-traffic locations, including shopping centers, hotels, airports, and hospitals, where clear and attractive messaging is essential.



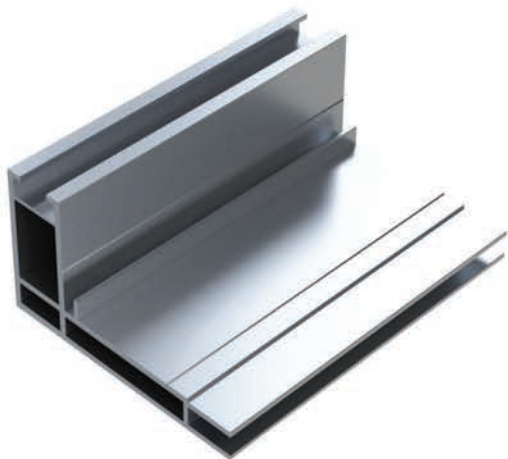
Anodized



White



Black



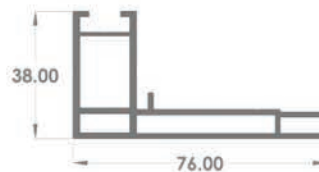
WEIGHT
0.77 Lb/ft 1.15 kg/m



ACCESSORIES
Mounting Bracket



ACCESSORIES
Freestanding Base



PROFILE DIMENSIONS



LOCK-SYSTEM
Tension-Lock

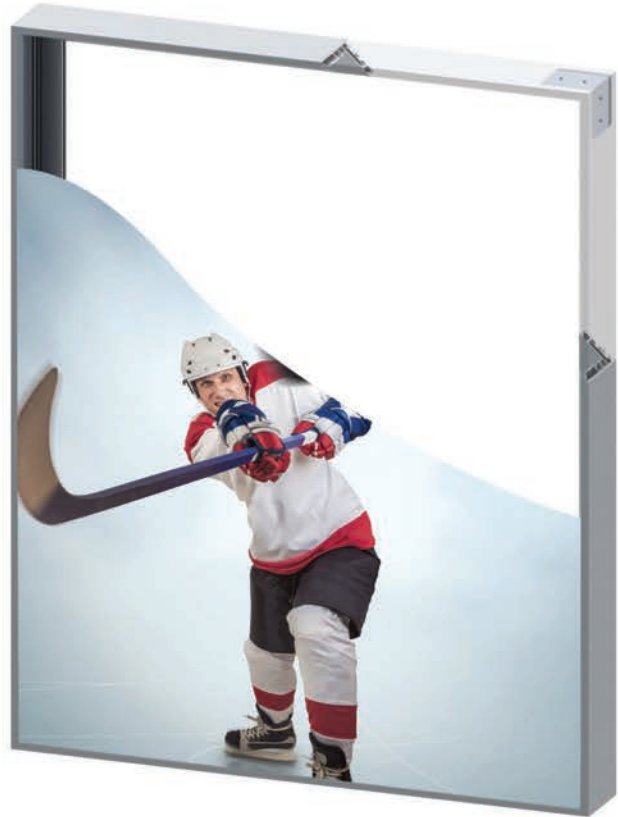
SF 098

Overview

The Reverse-Fit frame is expertly crafted to sit flush against a window, providing clear visibility from the exterior while allowing seamless SEG banner installation from inside. Featuring a dual-channel design, it accommodates a second banner on the reverse side, maximizing display flexibility and impact.

Applications

Ideal for retail window displays where front access is restricted, this frame is a go-to solution for creating dynamic, double-sided visuals that engage customers from both inside and outside the store, enhancing storefront appeal and promotional effectiveness.



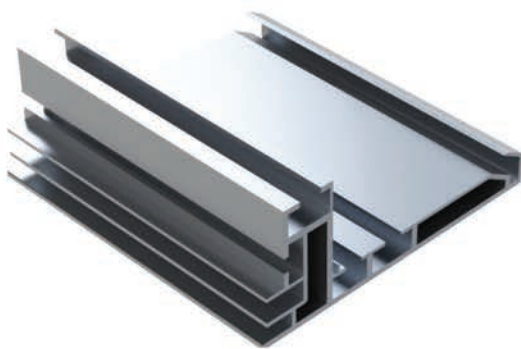
Anodized



White



Black



WEIGHT

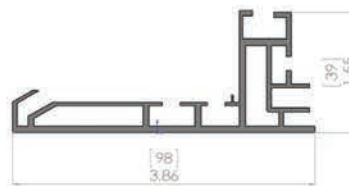
0.92 Lb/ft 1.37 kg/m



ACCESSORIES
Mounting Bracket



ACCESSORIES
Freestanding Base



PROFILE DIMENSIONS



LOCK-SYSTEM
Angled L

SF G

Overview

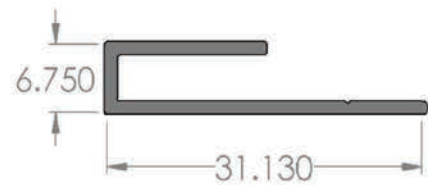
This profile is expertly crafted to position your SEG banner directly against a window, creating a bold, full-surface display that maximizes visibility and impact. When attached to the window frame, it securely holds the banner in place, allowing it to cover the entire window surface for a seamless, edge-to-edge appearance. Designed with precision, this profile is ideal for retailers looking to create attention-grabbing visuals that are easily viewable from the exterior while offering clean aesthetics from within the store. The design ensures that the banner can be installed or changed from the interior, eliminating the need for outdoor access and making it convenient for regular updates. By transforming window spaces into high-impact advertising areas, this profile serves as a powerful tool for brand storytelling and promotional displays in high-traffic retail environments.



Anodized

TECHNICAL OVERVIEW

- Single sided opaque banner
- SEG frame with mitered corners
- Clear anodized aluminum finish
- Super-lightweight



PROFILE DIMENSIONS

WEIGHT

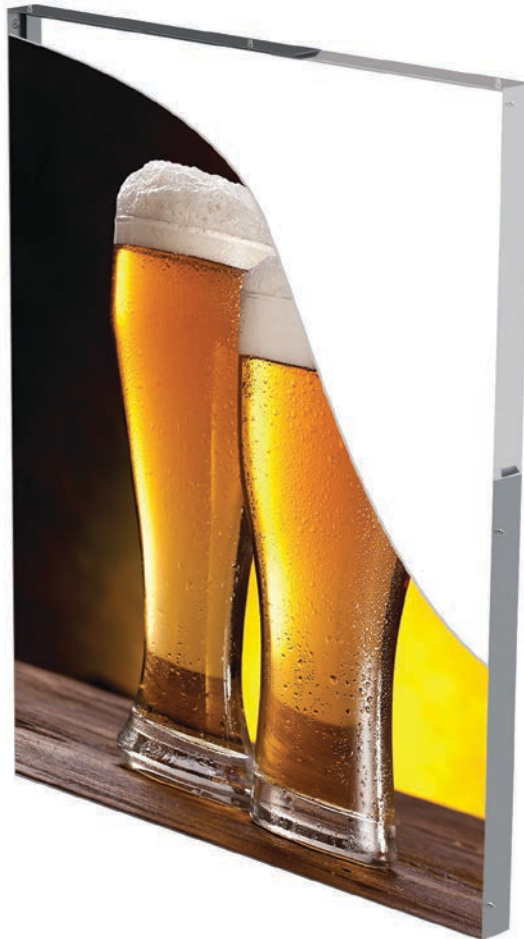
0.59 Lb/ft 0.88 kg/m

SF Y

Overview

Specifically designed for retrofit applications, these frames offer a seamless solution for incorporating SEG banners into existing structures. With the flexibility to attach directly to walls, ceilings, doorways, or other architectural surfaces, these frames adapt to the contours of each surface, following its lines for a perfectly integrated look.

This easy add-on capability allows retail spaces to quickly transform unused wall openings, ceiling spaces, or doorways into high-impact display areas. By enabling SEG banners to fit snugly within pre-existing spaces, these frames make it easy to refresh and repurpose areas without the need for extensive renovations or structural changes. Ideal for retail environments looking to maximize visual space and streamline branding efforts, these retrofit frames bring a clean, upscale finish to any display, ensuring high visibility and easy maintenance, even in high-traffic areas.



Anodized

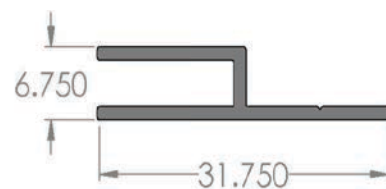


WEIGHT

0.59 Lbs/ft 0.88 kg/m

TECHNICAL OVERVIEW

- Single sided opaque banner
- SEG frame with mitered corners
- Clear anodized aluminum finish
- Super-lightweight



PROFILE DIMENSIONS

SINGLE-SIDED

SFD 050

Overview

Our best-selling and highly adaptable profile is engineered to meet a wide range of retail and display needs, offering unparalleled flexibility for both single- and double-sided applications. This profile features precision-designed channels along the perimeter, enabling quick, tool-free installation of silicone edge graphic (SEG) banners. By allowing for seamless, edge-to-edge visuals, this frame ensures that graphics display with the clean, frameless aesthetic hallmark of modern retail environments. The frame's robust yet refined structure supports high-resolution, large-format prints, creating a compelling visual presentation that stands out in any setting.

Applications

This profile's design and versatility make it an ideal choice for retail displays across a variety of formats. Commonly used in environments where adaptability is key, it can be wall-mounted to create a bold, elevated backdrop, positioned as a freestanding unit to serve as an attention-grabbing centerpiece, or set up as a table-top display for a more intimate presentation. Retailers value this profile for its ability to transform quickly based on campaign needs, whether showcasing seasonal collections, promotions, or brand narratives. Its adaptable design enables rapid changes without requiring specialized installation teams, making it a practical solution for high-traffic retail settings and visual merchandising that demands both aesthetic appeal and operational efficiency.



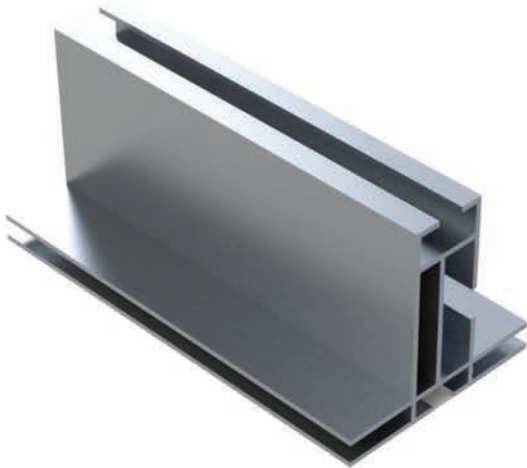
Anodized



White



Black



WEIGHT

0.52 Lb/ft 0.77 kg/m



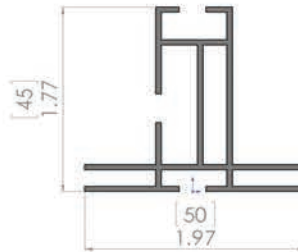
ACCESSORIES

Hanging Attachment



ACCESSORIES

Hanging Attachment



PROFILE DIMENSIONS



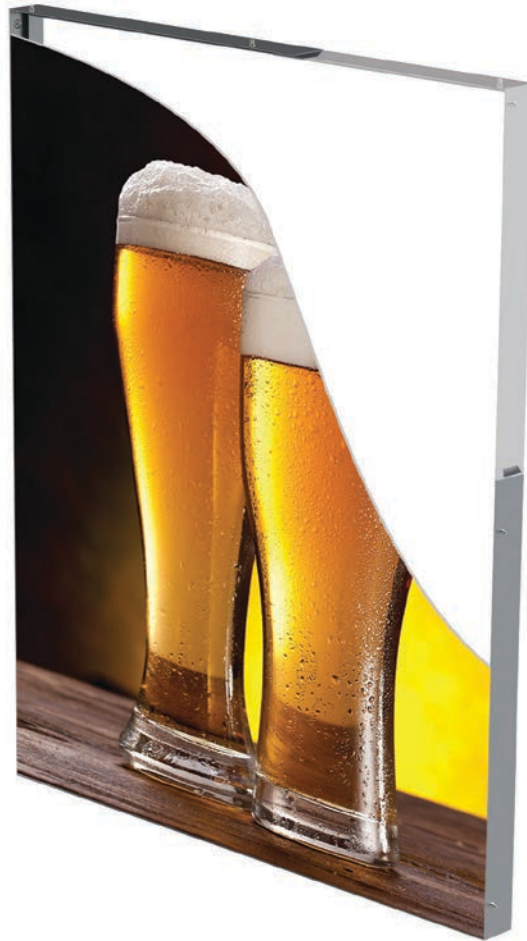
LOCK-SYSTEM

Double L

SFD 075

Overview

Specifically designed for retrofit applications, these frames offer a seamless solution for incorporating SEG banners into existing structures. With the flexibility to attach directly to walls, ceilings, doorways, or other architectural surfaces, these frames adapt to the contours of each surface, following its lines for a perfectly integrated look. This easy add-on capability allows retail spaces to quickly transform unused wall openings, ceiling spaces, or doorways into high-impact display areas. By enabling SEG banners to fit snugly within pre-existing spaces, these frames make it easy to refresh and repurpose areas without the need for extensive renovations or structural changes. Ideal for retail environments looking to maximize visual space and streamline branding efforts, these retrofit frames bring a clean, upscale finish to any display, ensuring high visibility and easy maintenance, even in high-traffic areas.



Anodized

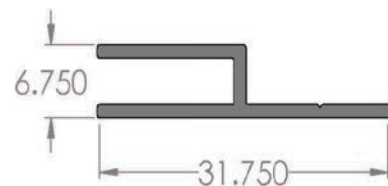


WEIGHT

0.59 Lbs/ft 0.88 kg/m

TECHNICAL OVERVIEW

- Single sided opaque banner
- SEG frame with mitered corners
- Clear anodized aluminum finish
- Super-lightweight



PROFILE DIMENSIONS

DOUBLE-SIDED

SFD 105

Overview

Our top-selling, versatile profile is expertly designed for both single- and double-sided displays, adaptable to a wide range of applications. Equipped with perimeter channels, it allows for quick, tool-free SEG banner installation, ensuring a clean, professional look.

Applications

A preferred choice in retail, this frame's deep profile enhances its versatility. It seamlessly adapts to various display needs, whether wall-mounted, freestanding, or used as a tabletop display, making it ideal for impactful and flexible visual merchandising setups.



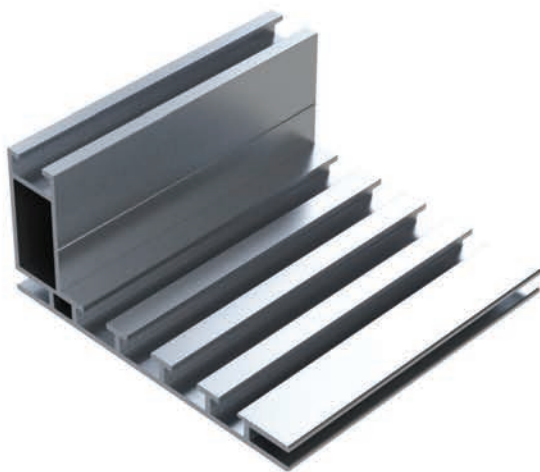
Anodized



White



Black



WEIGHT

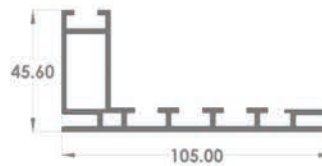
1.01 Lb/ft 1.51 kg/m



ACCESORIES
Mounting Bracket



ACCESORIES
Freestanding Base



PROFILE DIMENSIONS



LOCK-SYSTEM
Tension-Lock

DOUBLE-SIDED

SFD 115

Overview

This profile is meticulously engineered to deliver a sleek, double-sided frame that showcases graphics with an elegant, upscale, frameless appearance. Designed to present silicone edge graphics (SEG) seamlessly on both sides, the frame provides an edge-to-edge display that maximizes visual impact while maintaining a clean, minimalistic aesthetic. Its construction ensures that high-resolution graphics remain taut and smooth, accentuating vibrant colors and intricate details without the distraction of traditional framing. This profile allows brands to elevate their messaging with a contemporary look that aligns perfectly with the sophisticated demands of modern retail and design environments.

Applications

Highly versatile, this double-sided frame is a preferred choice for retail displays, visual merchandising, and interior design installations. In retail, it excels as a freestanding display, ideal for creating eye-catching centerpieces within open floor plans. Positioned strategically, it can enhance product zones, direct foot traffic, and serve as a visual anchor, drawing customers' attention from both directions. Additionally, this frame can be suspended from ceilings, allowing it to float within a space, making it particularly effective in environments with limited floor space or areas where a unique visual approach is desired.



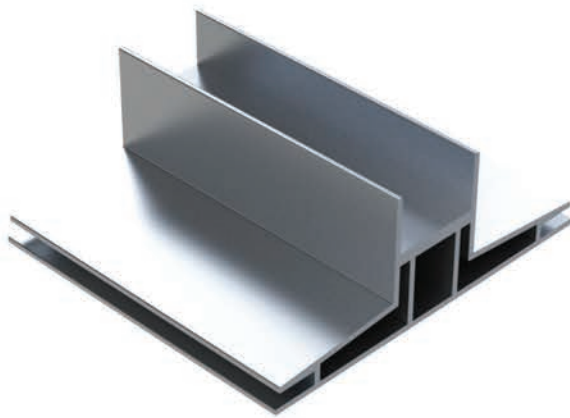
Anodized



White



Black



WEIGHT

1.29 Lb/ft 1.92 kg/m



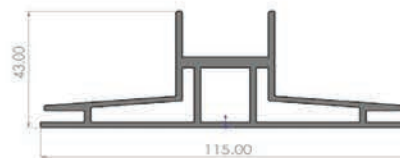
ACCESSORIES

Hanging Attachment



ACCESSORIES

Freestanding Base



PROFILE DIMENSIONS



LOCK-SYSTEM

L Insert

DOUBLE-SIDED

 Baganti™

SFD 120

Overview

This deep, double-sided frame profile is engineered with channels on both sides, allowing seamless integration of SEG (silicone edge graphic) banners for a premium, frameless look that elevates any display. Its depth not only enhances visual impact but also provides stability, making it ideal for applications where a bold, upscale aesthetic is desired. This profile delivers a sleek, modern presentation that maximizes graphic visibility, drawing attention from all angles with its sophisticated design.

Applications

Widely used in retail and interior design, this deep-profile frame is versatile enough to make a statement in a variety of settings. Its adaptable structure allows for multiple configurations—freestanding as a prominent centerpiece, suspended for a floating effect, or ceiling-mounted to create an impactful virtual skylight that adds depth and ambiance to any space. In retail environments, it's perfect for showcasing high-impact visuals and promotional content, while in interior design, it serves as an architectural element that enhances spatial aesthetics in showrooms, lobbies, and other sophisticated spaces. This frame is a powerful tool for creating immersive brand experiences and visually engaging interiors that leave a lasting impression.



Anodized



White



Black



WEIGHT

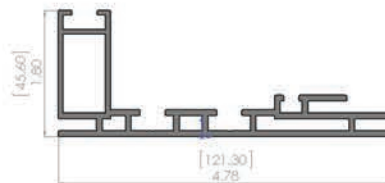
1.34 Lb/ft 1.99 kg/m



ACCESORIES
Mounting Bracket



ACCESORIES
Freestanding Base



PROFILE DIMENSIONS



LOCK-SYSTEM
Tension-Lock

SFD 140

Overview

This profile is expertly crafted to produce a sleek, double-sided frame that provides an elegant, upscale frameless presentation. Designed for maximum impact, it ensures that graphics are displayed seamlessly from edge to edge, allowing visuals to stand out without the distraction of visible borders. This profile supports high-quality SEG (silicone edge graphic) banners on both sides, creating a refined, modern look ideal for elevated branding and promotional displays.

Applications

Highly versatile, this double-sided frame is a top choice for retail and interior design applications. Its adaptable structure allows it to function as a freestanding display, capturing attention as a striking visual centerpiece, or to be suspended, adding dimension to the environment with a floating, gallery-inspired effect. Perfect for storefronts, showrooms, and contemporary interiors, this profile integrates seamlessly into any design concept, enhancing the ambiance while delivering a powerful brand message from multiple viewing angles.



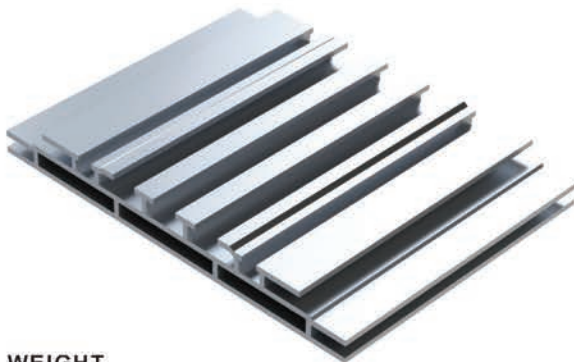
Anodized



White



Black



WEIGHT

1.42 Lb/ft 2.11v kg/m



ACCESORIES

Hanging Attachment



ACCESORIES

Freestanding Base



PROFILE DIMENSIONS



LOCK-SYSTEM

Bracket L

DOUBLE-SIDED

 Baganti™

SFD 150

Overview

This deep, double-sided frame is designed to offer an upscale, frameless look by integrating SEG (silicone edge graphic) channels on both sides of the profile. The dual-channel design enables the display of graphics on both faces, allowing for seamless, edge-to-edge visuals that capture attention from multiple directions. The deep frame enhances the visual depth and stability, making it a sturdy, premium choice for high-traffic areas where quality presentation is essential. Its refined design emphasizes large-format graphics, creating an uninterrupted, high-impact display perfect for elevating brand presence.

Applications

Widely utilized in restaurant settings and grocery or supermarket environments, this double-sided frame provides the ideal solution for impactful signage that reinforces branding while guiding customers. In restaurants, it serves as an elegant tool for showcasing menus, promotional graphics, or seasonal themes, whether suspended for a dynamic overhead presentation or freestanding for versatile placement. For grocery and supermarket signage, this profile's durable construction is perfect for aisle, checkout, and produce section displays, presenting product information, promotions, and store branding in a way that enhances visibility and engages shoppers. dual-sided design maximizes message exposure in high-foot-traffic areas, delivering professional-grade visuals that support an organized and visually cohesive store environment.



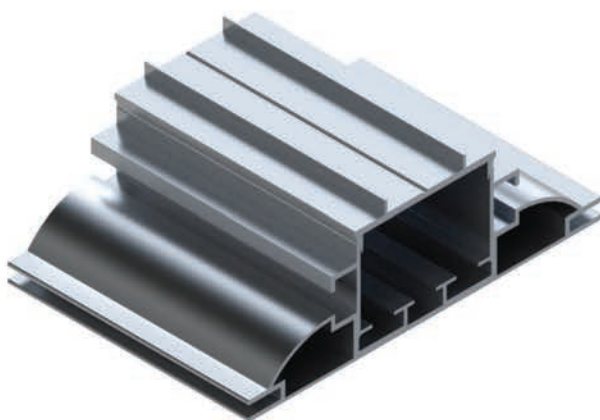
Anodized



White



Black



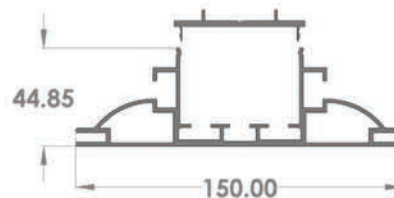
WEIGHT
1.29 Lb/ft 1.92 kg/m



ACCESORIES
Hanging Attachment



ACCESORIES
Freestanding Base



PROFILE DIMENSIONS



LOCK-SYSTEM
Double L

DOUBLE-SIDED

BACK-LIT SEG FRAMES

Unmatched Visual Impact

LED backlit SEG frames deliver a brilliant, evenly lit display that enhances graphic vibrancy, ensuring your visuals are consistently eye-catching and professional. By pairing high-quality large-format silicone edge graphics (SEG) with our advanced LED technology, our frames create seamless, edge-to-edge illumination that brings depth and dimension to any image. The result is a sleek, frameless look that captures attention from every angle, making it ideal for high-traffic retail and display environments. Unlike traditional lighting solutions, our LED backlighting distributes light evenly across the entire graphic, eliminating hotspots or shadows and delivering a high-impact visual experience that draws customers in and keeps them engaged.

Reliability and Versatility

Designed with durability and flexibility in mind, LED-backlit SEG frames are an optimal solution for industry professionals in the retail and display markets. Our LED illumination is energy-efficient, long-lasting, and low-maintenance, providing consistent illumination with minimal power consumption over extended periods. Additionally, the SEG graphics can be updated quickly without tools, allowing for easy change-outs and adaptable branding for seasonal campaigns or new product launches. These frames can be wall-mounted, freestanding, or suspended, adapting effortlessly to any layout, and are ideal for enhancing the ambience in spaces like storefronts, exhibitions, and showrooms. Our proprietary LED backlit SEG frames offer a modern, reliable solution that combines aesthetics with performance for retail and display experts looking to elevate their visual presentation.

SFB 040

Overview

This single-sided frame features the innovative Lumosanti™ lighting system, providing comprehensive illumination coverage while achieving a seamless, edge-to-edge frameless look. The profile's recessed groove around the perimeter is specifically engineered for effortless installation of SEG (silicone edge graphic) banners, making updates quick and tool-free. With its sleek construction, this frame enhances visuals without visible borders, creating a clean and polished presentation that captures attention in any setting.

Applications

Perfectly suited for retail environments, this frame is ideal for retail applications that want to showcase bright, vivid imagery while maintaining a refined and modern appearance. The frame's medium depth offers versatility, not only in retail applications but also in interior design, where it can be used to backlight artwork or provide ambient lighting that adds warmth and sophistication to any space. Whether displayed on walls or as part of an interior lighting design, this frame is a flexible solution for professionals seeking high-impact, visually engaging displays that maintain a sleek aesthetic.



Anodized



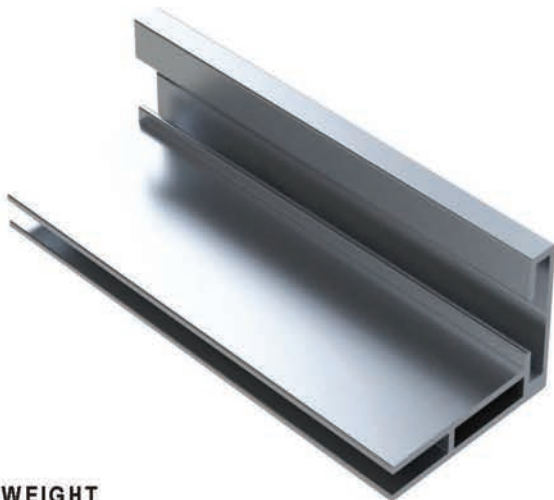
White



Black

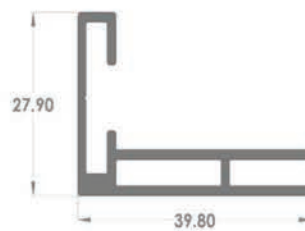


ACCESSORIES
Mounting Bracket



WEIGHT

0.34 Lb/ft 0.52 kg/m



PROFILE DIMENSIONS



LOCK-SYSTEM
Angled L

BACK LIT SINGLE-SIDED

SFB 076

Overview

Our single-sided light box featuring the Lumosanti™ Lighting Solution is expertly designed to deliver bright, uniform backlighting across even the largest formats. Engineered for effortless assembly, this light box eliminates the need for bulky light panels, allowing it to be quickly set up, broken down, and packed into a single compact case. This streamlined design provides substantial savings on shipping and storage, making it an efficient and cost-effective solution for high-impact displays.

Applications

Ideal for retail environments, this light box showcases vibrant, attention-grabbing images with a sleek, frameless appearance that enhances any visual merchandising strategy. Its medium-depth profile adds flexibility, making it equally suitable for interior design applications such as backlighting artwork or creating ambient lighting in hospitality or commercial spaces. This versatile light box offers an elegant and efficient display option for professionals looking to enhance visual appeal and brand messaging without compromising on practical benefits.



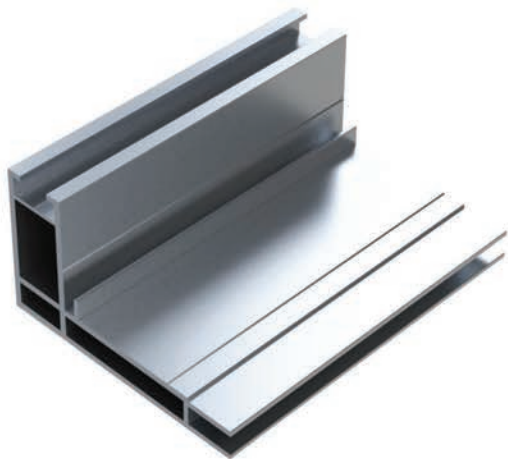
Anodized



White



Black



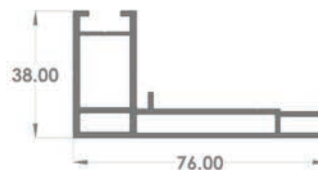
WEIGHT
0.77 Lb/ft 1.15 kg/m



ACCESSORIES
Mounting Bracket



ACCESSORIES
Freestanding Base



PROFILE DIMENSIONS



LOCK-SYSTEM
Tension-Lock

BACK LIT SINGLE-SIDED

 **Baganti™**

SFB 105

Overview

The SFB 105 is a high-performance, single-sided backlit display that incorporates the advanced Lumosanti™ lighting system for flawless light diffusion across the entire frame, regardless of size. This technology ensures bright, even illumination from edge to edge, eliminating hotspots and shadows for a professional, eye-catching display. The SFB 105's refined design provides a modern, frameless aesthetic that enhances the impact of any large-format graphic, making it ideal for environments demanding visual consistency and appeal.

Applications

The versatile deep profile of the SFB 105 makes it a popular choice in retail environments where flexibility is key. This frame can be wall-mounted, positioned as a freestanding unit, or arranged as a tabletop display, adapting seamlessly to different presentation needs. From attracting attention in storefronts to adding ambience in interior spaces, the SFB 105 offers the adaptability needed for dynamic retail and display settings, supporting high-impact visuals in multiple configurations to maximize brand presence and enhance customer engagement.



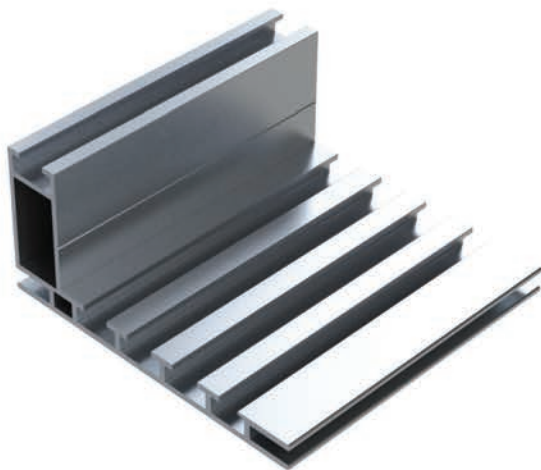
Anodized



White



Black



WEIGHT

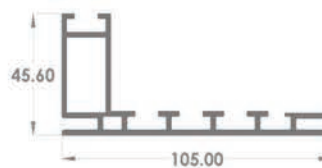
1.01 Lb/ft 1.51 kg/m



ACCESORIES
Mounting Bracket



ACCESORIES
Freestanding Base



PROFILE DIMENSIONS



LOCK-SYSTEM
Tension-Lock

SFBD 120

Overview

This premium backlit frame, offered in both single and double-sided configurations, is powered by our advanced Lumosanti™ Lighting Solution. Engineered for uniform light diffusion, it delivers bright, even illumination across the entire display surface, completely free of hotspots. With edge-to-edge lighting, this frame showcases graphics with remarkable clarity and vibrancy, ensuring high-impact visuals that captivate viewers in any setting.

Applications

The frame's deep profile lends itself as a standout statement piece in retail and display environments, bringing a polished and dynamic look to any space. Its versatility makes it ideal for various applications, from retail storefronts and brand displays to interior spaces that benefit from ambient or focal lighting. Whether wall-mounted, freestanding, or suspended, this frame enhances the visual appeal of any room, making it a top choice for professional's seeking a sophisticated, high-performance lighting solution.



Anodized



White



Black



WEIGHT

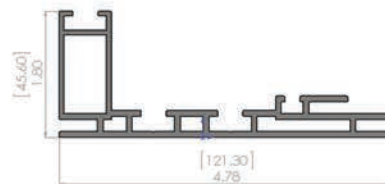
1.34 Lb/ft 1.99 kg/m



ACCESSORIES
Mounting Bracket



ACCESSORIES
Freestanding Base



PROFILE DIMENSIONS



LOCK-SYSTEM
Tension-Lock

BACK LIT DOUBLE-SIDED

 **Baganti™**

SFBD 140

Overview

This double-sided profile provides a sleek, upscale frame designed for easy SEG (silicone edge graphic) banner installation, creating a refined, frameless look that showcases graphics seamlessly from edge to edge. Engineered for efficiency, this system enables quick, tool-free banner replacements, allowing updates to be made effortlessly and ensuring visuals stay fresh and relevant in dynamic environments. Its elegant design and practical functionality make it an ideal choice for high-end display needs.

Applications

Favored by architects and interior designers, this frame enhances projects where a modern, sophisticated aesthetic is essential. It's perfectly suited for corporate offices and retail environments, where its sleek, frameless finish elevates the overall ambience. The profile's versatility makes it adaptable to various spaces, providing an upscale, professional appearance that complements branding, decor, and functional display requirements in any setting.



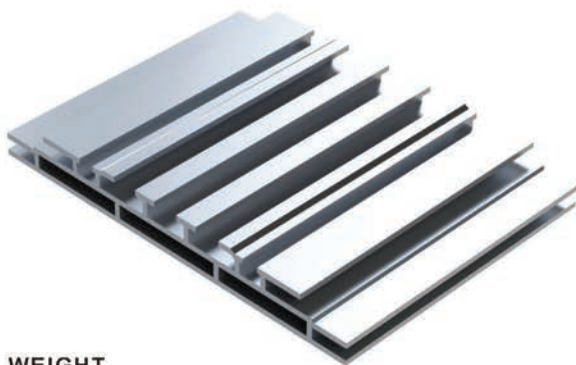
Anodized



White



Black



WEIGHT

1.42 Lb/ft 2.11v kg/m



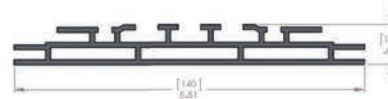
ACCESORIES

Hanging Attachment



ACCESORIES

Freestanding Base



PROFILE DIMENSIONS



LOCK-SYSTEM

Bracket L

SFBD 150

Overview

This advanced double-sided display is designed with a deep profile, allowing for effortless, tool-free installation of SEG banners on both sides. Equipped with our exclusive Lumosanti™ Lighting Solution, it provides consistent, uniform illumination across the entire display surface, enhancing graphic clarity and visual impact with seamless, edge-to-edge brightness.

Applications

With its bold, eye-catching profile, this frame is ideal as a freestanding display in retail, corporate, and high-traffic environments. Its substantial design makes a striking impression, ensuring that visuals stand out with brilliance and sophistication in any setting, whether used as a focal point in a showroom or as a high-impact branding element in event spaces.



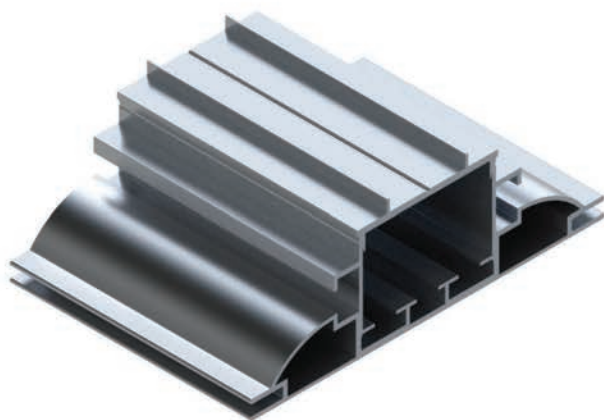
Anodized



White



Black



WEIGHT

1.29 Lb/ft 1.92 kg/m



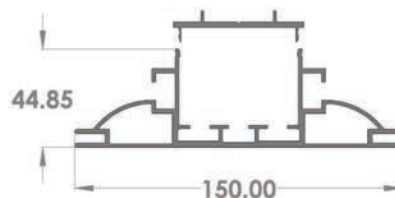
ACCESORIES

Hanging Attachment



ACCESORIES

Freestanding Base



PROFILE DIMENSIONS



LOCK-SYSTEM

Double L

BACK LIT DOUBLE-SIDED

 Baganti™

LIGHT GUIDED ACRYLIC PANELS

Light-guided acrylic panels offer a state-of-the-art solution for achieving even, **edge-to-edge illumination** in various applications, from retail displays and shelving to architectural lighting. These panels are engineered with precision to channel light uniformly across their entire surface, creating bright, **consistent illumination** without hotspots or shadows. Unlike traditional backlighting methods, light-guided acrylic panels are sleek, lightweight, and incredibly thin, allowing for streamlined designs that don't compromise on lighting quality. The efficient design also reduces energy consumption, making it a more sustainable lighting choice.

Another significant advantage of light-guided acrylic panels is their versatility and adaptability in different environments. Ideal for use in displays, signage, and interior decor, these panels can be easily integrated into frames or wall-mounted setups to provide vibrant, eye-catching illumination. With the ability to pair these panels with **color-changing LEDs** or **adjustable brightness** controls, they offer customizability to suit the ambiance and branding needs of any space. For retail and display experts, light-guided acrylic panels provide a professional, polished finish that enhances visual appeal while optimizing space and efficiency.

SF 043

Overview

The SFB 043 is an ultra-slim, single-sided light box crafted for a sleek, modern display with minimal depth. Featuring light-guided etched acrylic panels, it provides a seamless, edge-to-edge frameless appearance that elevates the impact of any graphic. This model is shipped fully assembled, enabling quick and easy mounting, so it's ready for immediate use in high-traffic areas.

Applications

With its refined and versatile design, this light box is an exceptional choice for upscale environments. Its ultra-thin profile complements contemporary aesthetics, making it ideal for luxury retail displays, art galleries, and sophisticated corporate settings. The SFB 043 adds a premium feel to any space, enhancing the visual appeal of high-end graphics while maintaining a low profile that integrates effortlessly into various layouts.



Anodized



White



Black



WEIGHT

0.59 Lb/ft 0.88 kg/m



PROFILE DIMENSIONS



ACCESSORIES

Mounting Bracket



LOCK-SYSTEM

Tension-Lock

HIGH-OUTPUT SEG FRAMES

High-output edge-lit SEG lightboxes offer unparalleled brightness and clarity, making them the ideal solution for retail environments, events, and branding displays that demand maximum visual impact. Unlike traditional backlit systems, edge-lit lightboxes use powerful LEDs positioned along the frame's edges, allowing light to be evenly dispersed across the entire surface for a seamless, vibrant appearance. This setup not only reduces energy usage but also creates an ultra-slim profile that maintains a sleek, frameless look—perfect for delivering striking, edge-to-edge visuals in a space-efficient design.

In addition to their energy efficiency and sleek design, high-output edge-lit lightboxes are engineered for durability and easy maintenance, allowing graphics to be changed quickly and tool-free, making them versatile for any fast-paced environment. The intense, uniform illumination enhances color depth and sharpness, helping brands and products stand out with vivid accuracy. For high-end retail, trade shows, and corporate displays, these lightboxes deliver professional-grade illumination that's both powerful and aesthetically appealing, making them a top choice for impactful, dynamic presentations.

SF 076

Overview

The SFB 076 is a medium-depth, edge-lit display expertly engineered for seamless light diffusion across SEG banners. Featuring high-power LEDs, it achieves a vibrant, uniform glow without any hotspots, ensuring flawless edge-to-edge illumination that enhances the visibility and impact of displayed graphics.

Applications

Ideal for vertical displays, the SFB 076 is a go-to solution for retail environments seeking bright, eye-catching visuals. Its versatile design also makes it a top choice for signage in high-traffic areas such as shopping centers, hotels, airports, and hospitals, where clear and consistent illumination is essential for effective communication and brand presence.



Anodized



White



Black



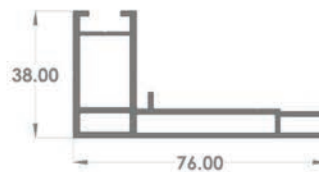
WEIGHT
0.77 Lb/ft 1.15 kg/m



ACCESSORIES
Mounting Bracket



ACCESSORIES
Freestanding Base



PROFILE DIMENSIONS



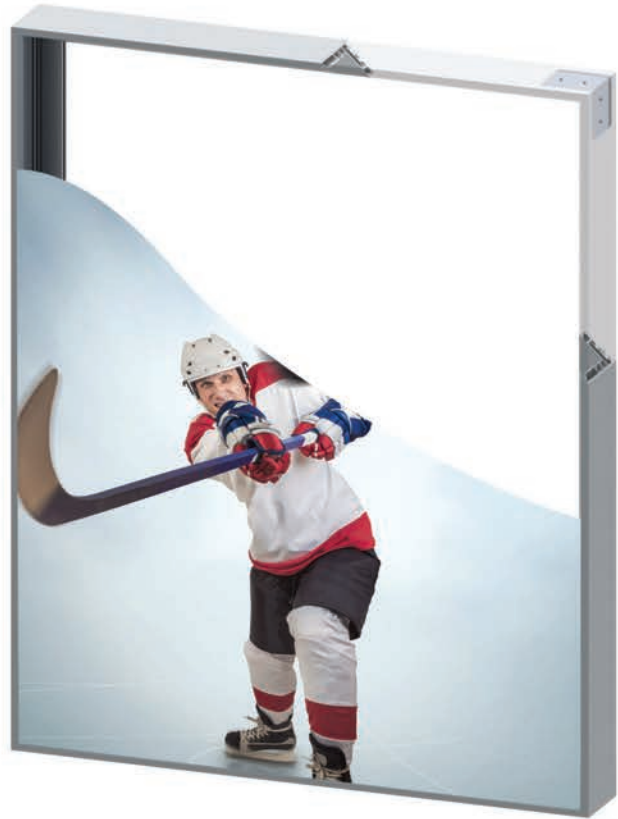
LOCK-SYSTEM
Tension-Lock

SFB 098

OVERVIEW

The Reverse-Fit frame is engineered for installation against a storefront windows, making the graphics visible from the exterior. This design requires banner insertion from the interior of the frame, with a 1/2" border around the graphic due to the internal channel for the SEG banner.

Ideal for retail window displays where the frame is not accessible from the front, the Reverse-Fit frame's dual-channel system offers flexibility by allowing for a second SEG banner or blackout banner on the reverse side.



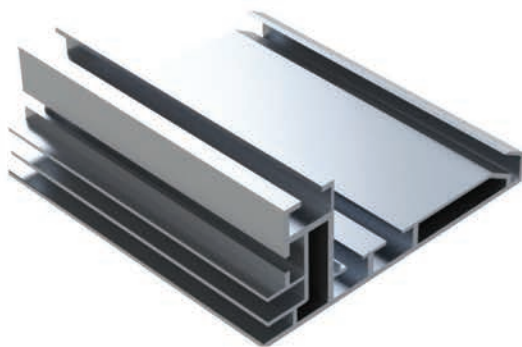
Anodized



White



Black



WEIGHT

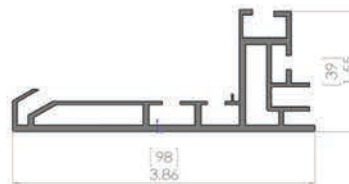
0.92 Lb/ft 1.37 kg/m



ACCESSORIES
Mounting Bracket



ACCESSORIES
Freestanding Base



PROFILE DIMENSIONS



LOCK-SYSTEM
Angled L

SFBD 075

Overview

Our best-selling profile, this medium-depth, double-sided display is equipped with high-output lighting that ensures flawless, uniform diffusion across both sides. The result is a vibrant, evenly illuminated surface that brings graphics to life with clarity and impact.

Applications

Widely used as a freestanding or suspended display, this versatile model is a top choice for retail environments aiming to make a bold visual statement. Its powerful, even lighting also makes it ideal for high-visibility signage in malls, hotels, airports, and hospitals, where consistent illumination and professional presentation are essential.



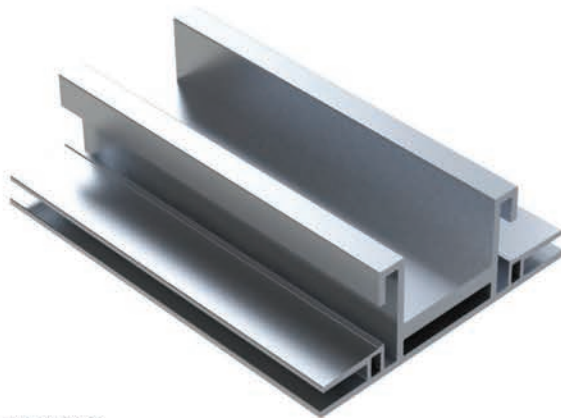
Anodized



White



Black



WEIGHT

0.86 Lb/ft 1.28 kg/m



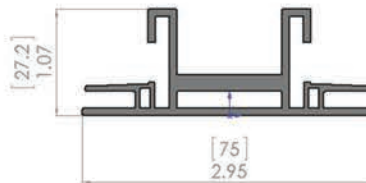
ACCESSORIES

Hanging Attachment



ACCESSORIES

Freestanding Base



PROFILE DIMENSIONS



LOCK-SYSTEM

Angled L

HIGH-OUTPUT DOUBLE-SIDED



SFBD 105

Overview

The SFB 105 is a premium single-sided display crafted for seamless light diffusion across SEG banners, providing a brilliant, even glow with no hotspots. Equipped with high-power LEDs, it ensures uniform, edge-to-edge illumination that brings vibrant graphics to life. Designed as a freestanding backlit display, the SFB 105 combines

Applications

Ideal for high-visibility retail display windows, the SFB 105 also adapts effortlessly to various settings, making it a versatile solution for shopping centers, hotels, airports, and hospitals. Its powerful lighting and sleek profile make it an excellent choice for any environment where consistent, high-quality illumination is essential for captivating visuals.



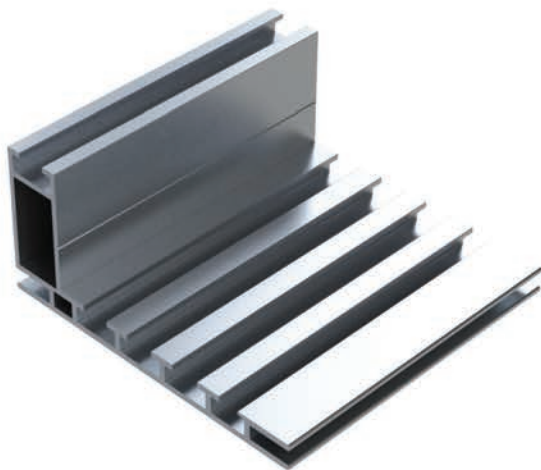
Anodized



White



Black



WEIGHT

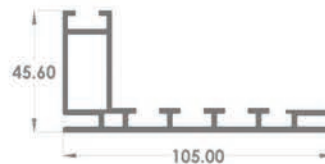
1.01 Lb/ft 1.51 kg/m



ACCESORIES
Mounting Bracket



ACCESORIES
Freestanding Base



PROFILE DIMENSIONS



LOCK-SYSTEM
Tension-Lock

HIGH-OUTPUT DOUBLE-SIDED

SFBD 120

Overview

This deep-profile, backlit display offers a high-performance solution available in single or double-sided configurations. Engineered with powerful LEDs, it achieves uniform light diffusion across SEG banners for consistently bright, edge-to-edge visuals without any hotspots. The frame's built-in channels allow for quick, tool-free installation of SEG graphics, while dedicated hanging attachments provide easy ceiling suspension for flexible placement.

Applications

Perfect for high-impact retail display windows, this backlit frame also serves as an exceptional signage option in shopping centers, hotels, airports, and hospitals. Its versatile design and flawless illumination make it an ideal choice for any professional environment looking to enhance visibility and make a lasting impression with vibrant, large-format visuals.



Anodized



White



Black



WEIGHT

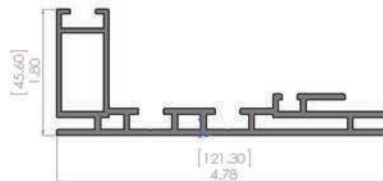
1.34 Lb/ft 1.99 kg/m



ACCESSORIES
Mounting Bracket



ACCESSORIES
Freestanding Base



PROFILE DIMENSIONS



LOCK-SYSTEM
Tension-Lock

HIGH-OUTPUT DOUBLE-SIDED



SFBD 140

Overview

This deep, double-sided backlit display is designed for optimal light diffusion across SEG banners, utilizing high-power LEDs to deliver a strikingly bright, edge-to-edge image without any hotspots. Its innovative engineering ensures uniform illumination, enhancing the vibrancy and clarity of graphics.

Applications

With its bold, freestanding profile, this display is perfect for creating a strong visual impact at industry conventions and trade shows. Its eye-catching design and exceptional brightness make it an ideal choice for brands looking to stand out and draw attention in competitive environments, ensuring that your messaging resonates with audiences.



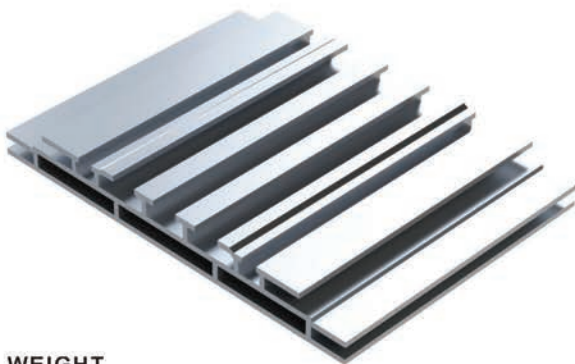
Anodized



White



Black



WEIGHT

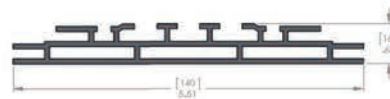
1.42 Lb/ft 2.11v kg/m



ACCESORIES
Hanging Attachment



ACCESORIES
Freestanding Base



PROFILE DIMENSIONS



LOCK-SYSTEM
Bracket L

SFBD 150

Overview

This advanced double-sided display is designed with a deep profile, allowing for effortless, tool-free installation of SEG banners on both sides. Equipped with our exclusive Lumosanti™ Lighting Solution, it provides consistent, uniform illumination across the entire display surface, enhancing graphic clarity and visual impact with seamless, edge-to-edge brightness.

Applications

With its bold, eye-catching profile, this frame is ideal as a freestanding display in retail, corporate, and high-traffic environments. Its substantial design makes a striking impression, ensuring that visuals stand out with brilliance and sophistication in any setting, whether used as a focal point in a showroom or as a high-impact branding element in event spaces.



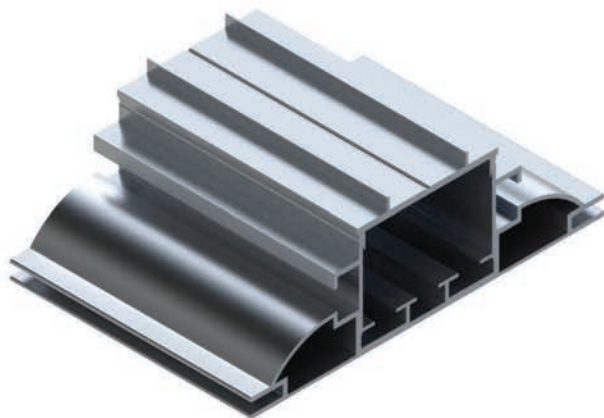
Anodized



White



Black



WEIGHT

1.29 Lb/ft 1.92 kg/m



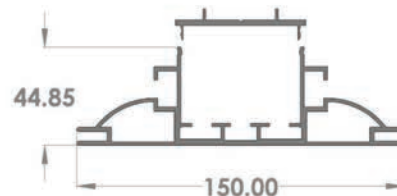
ACCESORIES

Hanging Attachment



ACCESORIES

Freestanding Base



PROFILE DIMENSIONS

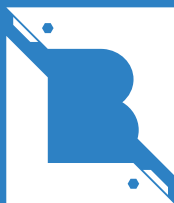


LOCK-SYSTEM

Double L

HIGH-OUTPUT DOUBLE-SIDED

 Baganti™



BagantiTM

Retail Display Solutions

5680 Rue Paré
Mount-Royal, Québec, H4P 2M2
514-303-9488 • www.baganti.com