

# Winchelsea Star

Price \$1

Your Weekly Community Newspaper

Since 1977

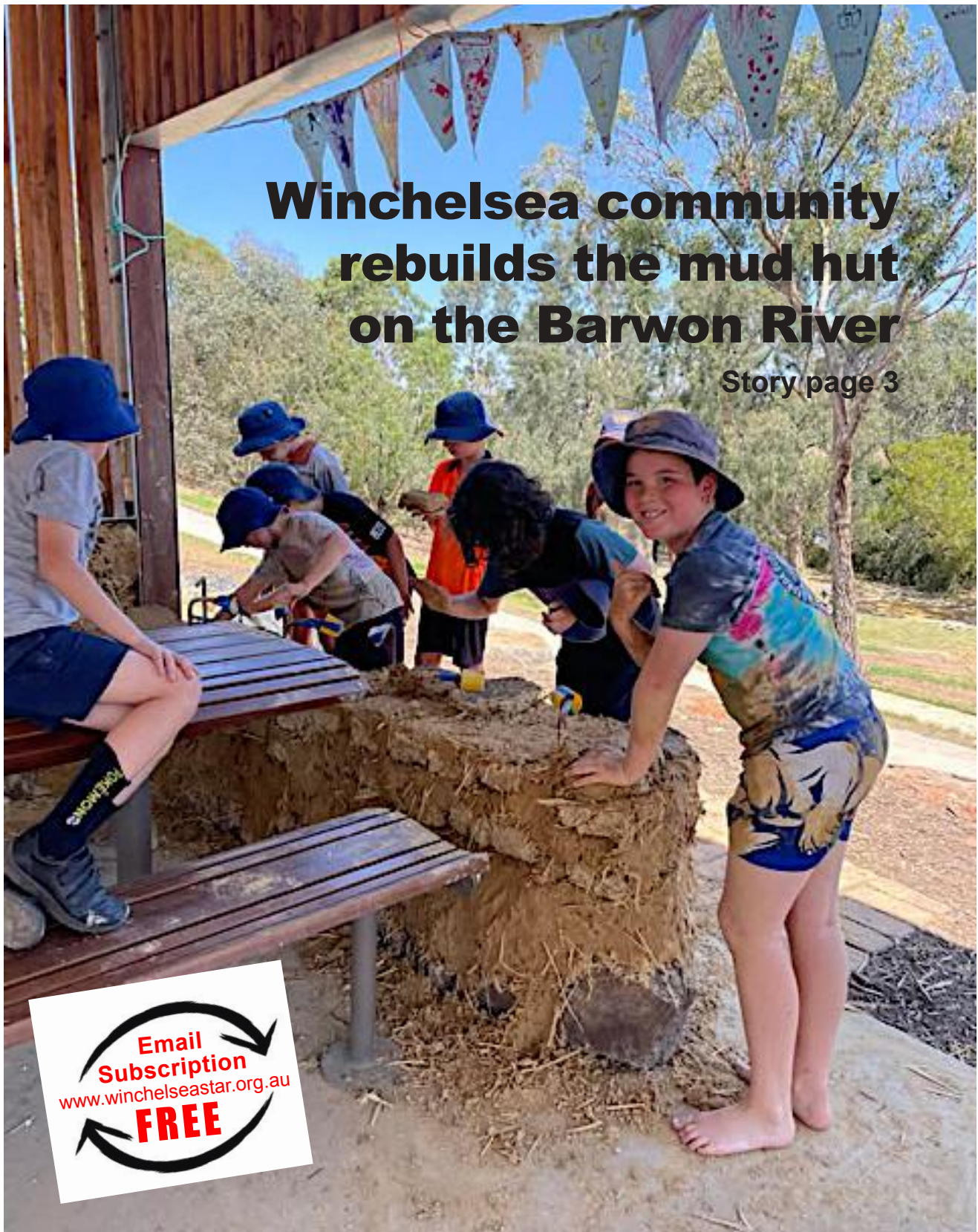
Vol 48 Ed 08

Tuesday 11 March 2025

[winchelseastar.org.au](http://winchelseastar.org.au)

## Winchelsea community rebuilds the mud hut on the Barwon River

Story page 3



Email  
Subscription  
[www.winchelseastar.org.au](http://www.winchelseastar.org.au)  
**FREE**



# GRANTS

## NOW OPEN

Open on 1 March  
closes on 31 March

- Community Initiative Grants up to **\$5,000**
- Natural Environment Grants up to **\$8,000**

Scan the **QR code** to find out more or call grants team on **5261 0600** to discuss your idea and ask any questions.



[surfcoast.vic.gov.au/Grants](http://surfcoast.vic.gov.au/Grants)



## Community Satisfaction Survey 2025

### On Now



**Random phone interviews with 600 Surf Coast Shire ratepayers are taking place until mid-March for the Local Government Community Satisfaction Survey.**

The annual survey which takes about seven minutes to complete provides us with feedback to help understand community perceptions about council, and identify improvement opportunities.

The Local Government Community Satisfaction Survey is carried out by the Victorian Government.



### WINCHELSEA GIRL GUIDES WELCOMES GIRLS 6-15 YRS

**Mondays, 4.30pm-6pm  
at St John's Catholic Church  
Winchelsea during school term.**

Guiding provides fun, friendship, and adventure. Developing teamwork, and leadership skills, whilst girls achieve goals, improve communities and grow in confidence.

If interested, girls can attend  
3 FREE sessions  
to come along and try.

Enquiries

Yvonne Orchard ph 0448 672 630 or  
Lily Dell Rennie ph 0428 936 441

# R.A.K. DAVIS & SONS

## CARTAGE CONTRACTORS

### WINCHELSEA

**SUPPLIER OF ALL QUARRY MATERIALS, TRUCK HIRE**

**CARTAGE OF GRAIN, LIME, GYPSUM & SUPER**

**LANDSCAPE & GARDEN SUPPLIES**

**56 WILLIS ST, WINCHELSEA**

**Ph – 5267 2094**

**Ryan – 0438 672 281**

**email: [rakdavissons@gmail.com](mailto:rakdavissons@gmail.com)**





# Winchelsea community rebuilds their mud hut for family fun

Alison Dean

Winchelsea . We made the mud ... to build the walls

**Thank-you Winchelsea Community** for working together to build the cob walls and strengthening our community!

Winchelsea community came together this week to build cob walls for our mud hut. Over 300 local participants and many more passers through took part in building the walls of our picnic shelter.

Last weekend it began with musical mud stomps to make the mud for our walls. That mud was used as bricks, glue and filler

as we raised the walls, one level at a time. The first section has begun to be rendered, while the last wall sections are finished off this weekend. The walls built this weekend will be rendered by the community in the following weeks.

Winchelsea Primary School students, some from Deans Marsh Primary and our kinder kids all had a chance to stomp, dance and play in the mud, as hard work turned into child's play and then into mud blobs which were passed to made mud bricks, to build the wall. We have also had a youth night this week and several family sessions.



People have played together in the mud and new friendships have been made through the mud. Several of us are looking into developing a Winchelsea community cob group where we can support each other with small cob projects at home - watch this space or contact me for more information.

Matilda from mud fun led us in a funky tune that went like this, "We make the mud, to make thde blobs, to pass the blobs, to make the bricks, to build the wall", while our local Nic from Krazy Koala accompanied with his sweet tunes.

I look forward to hearing all the stories of the experiences that we have shared to build the walls together.

*Photos Jason Nojuiera*







## COVID is still with us!

Judy Cameron

I am recovering from COVID. Luckily, at my age, I was able to get a script for the antivirals so the symptoms were not too bad. I think of COVID as a Winter affliction so haven't been masking up.

Currently, from the Victorian Health Department website:

### Key messages

- COVID-19 is a leading cause of death in Australia.
- The ongoing and significant burden of disease is driven by continued viral evolution and waning population immunity.
- The impacts of COVID-19 can be limited through vaccination, antiviral treatment and non-pharmacological interventions that limit transmission such as testing, case isolation, mask wearing, and ventilation improvements.
- It is estimated that 5-10% of people with COVID go on to develop post-acute COVID symptoms and conditions.
- Pathology laboratories must notify COVID-19 results.
- Residential care facilities, including aged and disability residential care, are at higher risk from COVID-19 outbreaks and should notify outbreaks to enable the provision of support.

So make sure your vaccines are up to date – and mask up! The easiest way to avoid breathing in germ particles!



Colac Otway Performing Arts & Cultural Centre  
95-97 Gellibrand Street, Colac VIC 3250

## Promac Productions presents FRANKLY SINATRA



**Sunday | 16 March | 2 pm**

**Starring the incredible music theatre star Ian Stenlake.**

This new production will not only tell the story and sing the hits of *Ol' Blue Eyes* but will also feature songs and stories of two of the greatest females - and friends of *Frank Sinatra* - to ever grace the stage: *Judy Garland* & *Liza Minelli*. Come join us for this toe-tapping new production from the wonderful team from *Promac Productions*.

**This performance is part of our Cocktails & Canapés Season and will include a complimentary drink and snack during the show!**

### BOOK NOW:

copacc.com.au | Box Office | 03 5232 9418 or scan QR code

Ticket \$24 | Concession \$22 | COPACC Members \$19.20

**SUBSCRIBE & SAVE!**

**COCKTAILS & CANAPÉS SUBSCRIPTIONS AVAILABLE**



**Domestic - Commercial - Rural**

# 0400 643 976

- All general Plumbing and Gasfitting • Water tanks and Pumps
- Renovations and Extensions • Hot water and Heat pump
- Split system and Wood heaters • Roof and Gutter
- Septic and Treatment plants • Excavation, Bobcat and Tipper
- Driveways and Earthworks
- Blocked drains and CCTV Inspection

**Simon McGillivray**

**Lic: 109610 Free Quotes, Fast & Friendly Service**





# Winchelsea welcomes Cindy Hirst, new owner of Sweet Thyme Cafe

**Janet Bond**

One of Cindy Hirst's favourite pastimes is to drop into country cafes and try their coffee.

It was on one of those relaxed country outings, that she and husband John discovered Winchelsea's popular Sweet Thyme Café in Main Street Winchelsea.

"I just love coffee and sitting in coffee shops, so we stopped in this one and saw that it had a for-sale sign. So, we started researching and then came back and sat again. Just like we are today, sitting up in this corner," she recalls.

"I just watched the team from afar – watched how things were done, how things worked, how the staff and customers interacted."

Cindy loved the vibe of the busy café and the obvious connection with the community. She says it was like watching a family. Last week Cindy took over the ownership of the Sweet Thyme Café from Nicola Wilkinson and husband Danny Ehmer after a fairly lengthy sale process.

The business was first advertised last May as an "owner-operated upmarket eatery serving homemade food in the growing town of Winchelsea, producing strong six-figure returns with a team of casual employees from a heritage building that was previously a bank."

A mother-of-two and experienced hospitality manager, Cindy has been running the popular Little Teapot Café & Play in Lara. She



and John plan to stay living in Lara for the meantime, because his work is based in Melbourne.

But Cindy is excited about her new venture and has been delighted by the warm welcome she's received. She admits she has some plans for the cafe, but they're not imminent.

"We're leaving it as Nicola and Dan had it at this point in time. It's not broke – it works very, very well.

"It's got variety, it's homemade and it's made with love," she says, adding that Nicola had passed on her recipes.

"I suppose the gift they have given me is the café, but also the community here."

"Community is so important," she said. "We all need community, we were never meant to be alone, were we?"

Last week, Nicola posted a moving message to the Winchelsea community after handing over the keys to Cindy in preparation for her and Danny's trip around Australia.

"Danny and I can't fully express our gratitude to everyone who has supported us during our time at the café. It has been an absolute joy to serve you, share in your stories, and become a part of this wonderful community. We have learned so much, and worked with an amazing team of staff, without you we could not have had such a successful business.

"We are truly thankful to you all, you will forever hold a special place in our hearts and memories.

"We wish Cindy every success in her own journey at Sweet Thyme Cafe, knowing that under her care she will look after our community and continue to grow this amazing café."

**33 Main Street, Winchelsea, VIC, Australia, Victoria  
(03) 5267 2798 [Sweethyme33@gmail.com](mailto:Sweethyme33@gmail.com)**



New owner of Winchelsea's Sweet Thyme Cafe Cindy Hirst  
with employee Alexandra Delaney







# Anywhere. Anytime. Anyone.

Police are out there to keep you safe. If you still choose to take risks while driving and break the road rules, chances are you will be caught.





## Winchelsea & District Women's Brunch



### A morning of Inspiration & Connection

The committee is excited to bring together women from across our community for a morning of good food, great company, and fun conversations.

This free event is all about creating a welcoming space where local women - no matter what stage of life they're in - can step away from the day-to-day, connect, and feel supported.

**Date: Monday, 18th March**

**Time: 9:30 AM – 12:00 PM**

**Location: Winchelsea Hub**

**Cost: FREE**

Enjoy a delicious brunch while hearing from inspiring guest speakers who'll share their experiences, insights and advice. Whether you're running a business, juggling work and family, or figuring out your next step, this is a chance to come together, meet some new faces and have a morning out. Seats are limited - register now to save your spot! Looking forward to seeing you there!



## Grasping the opportunities

"I fell in love with food since moving to Australia in 2014," said Cinthya Sabillon, Proprietor of La Caseta. "Watching cooking shows like Master Chef, discovering new vegetables like celeriac, parsnip, turnips, etc., and being exposed to such a variety of multicultural food was an inspiration to learn to cook and experiment with flavours. However, after trying and cooking food from around the world, I missed my Honduran food. For years, I was always on the search for Latin American restaurants, usually only finding Mexican places. They weren't bad, but none of them were truly authentic. That's when I started to think—what if I introduced Honduran food to Australia? I mean, why not? There's nothing like it here, and it would be nice to be the pioneer of Honduran food in Australia."

The absence of authentic Latin American food in Australia, combined with the inability to attend a local community market by a friend, gave Cinthya the opportunity to fill in the spot and trial selling Honduran food in Australia. This led to the creation of the first Honduran food business in the country, right here in Winchelsea.

"Due to visa limitations and lengthy delays, I worked casually in kitchens as a cook, and I loved it. It felt more like a hobby than a job, and I was good at it—still am. I was lucky to work with amazing chefs who taught me a lot about cooking and

business." But it wasn't until 2021 that she finally started her own food business. At her first market, within two hours, she sold out of her authentic Honduran food.

With a Master's in Finance under her belt, Cinthya set off to travel the world. While visiting San Francisco, she met Chris, her partner and strongest supporter. After some time traveling together, they settled and bought a home in Winchelsea. "Growing up in Honduras, I used to help my dad and my grandmother at their small businesses, either in sales or taking inventory. Somehow, having this experience at a young age also gave me the confidence to start my own business," Cinthya continues.

In her business, Cinthya wears many hats—from marketer, bookkeeper, to online salesperson. In 2023, she received validation of her culinary skills in traditional Honduran cuisine at the World Food Championships in the Australia Vegetarian section. "So far we've introduced Honduran Food to thousands of Australians and I hope over time it becomes a popular alternative to Mexican cuisine," says Cinthya.

In conclusion, Cinthya's journey illustrates the transformative power of seizing opportunities in life and business. Her story shows that success comes to those willing to step outside their comfort zones. By recognizing and acting on opportunities, Cinthya achieved her professional goals and fostered personal growth. Her experience emphasizes the need to be proactive and adaptable in a changing business landscape, reminding us that the best rewards often lie beyond uncertainty, and with courage and determination, anyone can succeed.

By participating in the upcoming International Women's Day event, attendees can gain insights from Cinthya's experiences and learn about the various roles women play in business and culinary arts. Her story not only inspires aspiring entrepreneurs but also emphasizes the impact of cultural diversity in the food industry.

We're so excited for this event, especially because Cinthya will be catering! You'll get to enjoy her delicious food while taking part in fun activities and great conversations.

Come along and be inspired by our panel of guest speakers at our International Women's Day Brunch in Winchelsea, being held on Tuesday, March 18, 2025, proudly supported by the Community Bank, Growing Winchelsea, and the Surf Coast Shire. Who knows—you may be influenced to get involved in our Winchelsea Business Network!



Cinthya Sabillon, Proprietor, La Caseta - Latin American Food



# Bags of rubbish don't belong in your recycling bin.

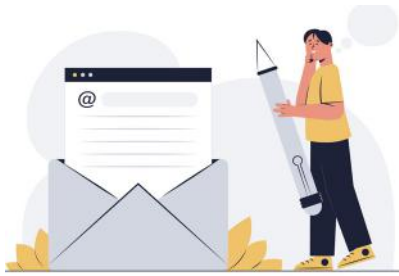
The bags tear open and spill rubbish onto the recycling, which stops some items from being recycled.

Put bags of rubbish in your red-lid landfill bin instead.

Visit [surfcoast.vic.gov.au/recycling](https://surfcoast.vic.gov.au/recycling) to find out more.







# Letter to the Editor

The state of the roads in the Winchelsea area

Dear Editor

The road network is rapidly falling apart.

The Princes Highway has had speed restrictions in place since September 2024 due to large pot holes. Not all drivers are following the speed restrictions making this a chaotic place to negotiate. There has been limited patching of the surface since the signs went into place making the holes in the left hand lane bigger and bigger on a daily basis. Other sections of the road are rapidly deteriorating.

The only thing in our favour has been the lack of rain. The next large rain event will likely see the road deteriorate within weeks. It is only a matter of time before we end up with the entire road restricted to 80km/hr. A road surface in this state has massive implications on tire, rim, suspension and vehicle damage.

The Winchelsea-Lorne road is in an even worse state of repair. Speed restrictions have been in place even longer on this road. There is work occurring to improve this surface, however for some reason it is not occurring on the sections of the road that have the most damage.

This road is particularly dangerous for motorcycles which are the canaries in the system when it comes to road surfaces. A poor road surface can unsettle a motorcycle and can lead to loss of control and catastrophic crashes. This road is a very high motorcycle use road and should be addressed as soon as is possible.

The poor road surfaces also go against the safe system approach adopted by road safety in Australia.

**Name and address supplied**

## Winchelsea Lions Club Cardboard and Paper Collection

Linda Carter



### PAPER COLLECTION

Newspaper, white paper, magazines etc can be left at the Lions shed at the rear of the Senior Citizens rooms in Harding St.

There is a container at the entrance if no one is there. Large amounts can be arranged to be picked up by ringing 4224 0226. Everything goes to a facility to be recycled.

### NO MORE CARDBOARD

The Winchelsea Lions Club would regretfully like to announce that we are no longer able to take cardboard.

**Our paper collection will remain the same  
and we would like to thank everyone who supports us  
and have made it possible for us to donate over \$50,000  
to date to our community .**



Paul and Carolyn Lane

## Welcome to Winchelsea

**Susan Corby**

Paul and Carolyn Lane enjoying Saturday morning coffee at Sweet Thyme Cafe in Winchelsea. They are moving from Melbourne to a quieter country life in Gherang and taking delight in their new home and animals.



## JOIN THE LOCAL RUNNING GROUP

**Amanda Worland**

Did you know Winchelsea has a small run group?

We all start our watches but we're not worried about personal best. Its more of a social run, jog and chat. We wait for slower runners and walk when one of us needs a rest. The aim is 10k with the option of 8 or 5k it's up to you. To finish off we have a coffee at La Hoot .

**Join us each Sunday morning 8am .**

**Meet at La Hoot .**









8 March 2025

Trebeck Reserve, Winchelsea



27 participants completed the course through Trebeck Reserve this week. Three people recorded their Personal Best time for Trebeck Reserve. Congratulations to Bernadette Gibson Rob Davies and Ashleigh Owen

We had visitors from Wallaby Track and Balyang Sanctuary.

This event was made possible by the following volunteers: Don Smith \*Neil McInnes\*Kate McInnes\*Chris Hurren, Ian Wakeman\*Angela Hurren\*Kirsti Gangi.

Further details of this week's results can be found at [trebeckreserveparkrun.com.au/results](https://trebeckreserveparkrun.com.au/results)

Please check out our Facebook page for today's photos and further information.

It takes a minimum of six people each week to safely conduct an enjoyable event. Please email [trebeckreserve@parkrun.com](mailto:trebeckreserve@parkrun.com) if

you are able to volunteer some of your time. Tasks are simple, sociable, fun and very much appreciated.

If you wish to join us any Saturday morning as a walker, runner or volunteer please complete the simple online registration at [parkrun.com.au/register](https://parkrun.com.au/register). This is free, only needs to be done once and can be used at any of the 5,000 plus parkrun events worldwide.

Well behaved dogs on a short hand held leash are welcome (no waist harnesses please)

You do not need to be a runner, wear fancy Lycra or the latest high-tech shoes. Around one third of participants walk the course.

parkrun was conducted at around 500 locations across Australia this week.





# Winchelsea Star

Your Weekly Community Newspaper

Since 1977



Winchelsea  
Star



## Winchelsea Star Production Meeting @ Coffee Saturday 29 March 2025 9-10am

All Winch locals are invited to come along to a monthly meeting - with coffee of course - on the last Saturday of each month @ Sweet Thyme, Winchelsea.

Your comments or suggestions, feedback, ideas for stories or coming events are welcome - or simply to say Hi!

At the recent meeting we discussed

- Free community ads, AGM ads
- Encouraging local cafes and businesses to distribute the Star
- Placing past copies of the Star in local eateries for general reading
- Welcome to new local resident who has volunteering to write regularly for the Star

### This Week's Winchelsea Star

Editor - Yvonne Stevens

Designer - Susan Corby



Winchelsea Star coffee meeting @ Sweet Thyme Cafe  
R-L Mick O'Meara, Susan Corby, Cindy Hirst,  
Cathie Cheadle, Nicola Wilkinson, Judy Cameron

**send your stories**  
[news@winchelseastar.org.au](mailto:news@winchelseastar.org.au)

### LOCAL NEWS and ARTICLES WELCOME

Include name and address of the sender

Email [news@winchelseastar.org.au](mailto:news@winchelseastar.org.au)

Leave hard copy at IGA Supermarket

### DEADLINE 5pm Fridays

4pm Sundays - hard copy articles left at IGA

6pm Sundays - sports results and weekend events

**EDITOR 5273 0295** Leave a message

### ADVERTISING

[advertising@winchelseastar.org.au](mailto:advertising@winchelseastar.org.au) 5273 0294

### free digital subscription

[www.winchelseastar.org.au](http://www.winchelseastar.org.au)

### JOIN US ON FACEBOOK

[facebook.com/TheWinchelseaStar](https://facebook.com/TheWinchelseaStar)

## production

**Editors:** Cerrie Forgan, Yvonne Stevens, Judy Cameron

**Advertising:** Sasha Gauntlett, Neil McInnes

**Design:** Susan Corby, Tony Phelps

**Printed by:** Winchelsea Community House

**Website by:** Winch Websites

## committee

**President:** [president@winchelseastar.org.au](mailto:president@winchelseastar.org.au)  
Neil McInnes

**Treasurer:** [treasurer@winchelseastar.org.au](mailto:treasurer@winchelseastar.org.au)  
Cathy Cheadle

**Secretary:** [secretary@winchelseastar.org.au](mailto:secretary@winchelseastar.org.au)  
Tony Phelps

**Members:** Mick O'Mara, Linda Carter, Susan Corby  
Sasha Gauntlett, Judy Cameron,  
Yvonne Stevens, Cerrie Forgan



© Winchelsea Star Org. Inc. All rights reserved  
Winchelsea Star Organisation Inc.  
Reg. No. A0053999F ABN 75 941 529 279  
[winchelseastar.org.au](http://winchelseastar.org.au) PO Box 5 Winchelsea 3241

Views expressed are not necessarily those of the Winchelsea Star or Committee. The Winchelsea Star reserves the right to edit or not publish any article.



## Winchelsea Star COMMUNITY NOTICEBOARD

email editor@winchelseastar.org.au or leave at Winchelsea IGA

### WINCHELSEA TENNIS CLUB

#### JUNIOR COACHING

Mondays from 3.30pm  
with experienced Nicole Mullen, \$10

#### SOCIAL TWILIGHT TENNIS

Monday evenings from 6.00pm.  
All Welcome!

#### RUNNING GROUP

Did you know Winchelsea has a small run group? We all start our watches but we're not worried about personal best. Its more of a social run, jog and chat.

We wait for slower runners and walk when one of us needs a rest. The aim is 10k with the option of

8 or 5k it's up to you. To finish off we have a coffee at La Hoot .

**Join us each Sunday morning 8am  
Meet at La Hoot.**

### LIONS CLUB

Environmentally friendly  
compressed paper bricks for your fire.  
Save on the rising cost of wood.  
Pack 4 bricks \$5 - Roll small rolls \$2  
Contact Alan 0476 475 422

### WINCHELSEA PICKLEBALL

Winchelsea Leisure Time Centre  
Wed 7-830pm or Thurs 10-11.30am.

All equipment supplied,  
wear suitable footwear.

Lesley Mathison 0438 672 197

### CUBS AND JOEYS

For information, or to get involved,  
contact Marie McPadden – 0409330147  
or mcpadden630@bigpond.com

### DIAMOND DOT DAY SATURDAY 5 APRIL

11.00-400pm

Senior Citizens, Harding St Winchelsea  
\$10 entry incl lunch, afternoon tea  
Diamond dot is like doing a painting. but  
you use beads instead of paint. We do  
have a few kits for sale.

New members welcome - See you there  
Tracey 0427500649



### BRIDGE

Social Bridge is played

**TUESDAYS 10 AM - 12 NOON**

Senior Citizens Centre

36 Harding Street Winchelsea

**New players always welcome**

Elaine Atkinson 0458 009 616

## Winchelsea Star CLASSIFIED ADS

email editor@winchelseastar.org.au or  
leave at Winchelsea IGA

*Notices removed after 2 weeks*



### GEESE FREE TO A GOOD HOME

Contact Judy 0409 417 562

*Posted 11/3/25*



### FOR SALE

#### MAN'S WATCH AND RING DUSTIN MARTIN PHOTO

A man's watch, it's beautiful, regretful  
sale, also a man's gold ring, \$300 for  
both. They are both special to myself as  
they were my ex partner's who died of  
cancer and I gave them to him.

Very regretful sale.

Also a large picture of Dustin Martin  
signed by him. \$300.

Or \$500 the lot.

"Richmond Fans" Ph 52 672 954.

*Posted 4/3/25*

### WANTED

#### HOT WATER SYSTEM

ASAP an electric hot water system.  
Please contact 52 672 054.

*Posted 4/3/25*

### FOUND BLACK CHOOK

Wandering on Naphthine Walk.  
If you are missing this chook please ring  
David on 0488165109  
to arrange pickup.

I have the chook pend up  
at the moment .

*Posted 11/3/25*

### FOR SALE TV Bauhn 58 inch

4K ultra HD with HDR

Price \$300

Ph 52 672 677

*Posted 4/3/25*



## WINCHELSEA CONCRETING

• Driveways • Sheds • Decorative Concrete • Raft Slabs

**Robert Murphy**

☎ 0438 235 237

✉ winchelseaconcreting@outlook.com

## DownRyte Excavations



- Excavations
- Drilling and Piling
- Rock Placement
- Tree and Stump Removal

Sean Hunwick

Mobile: 0409 447 288  
Email: downryte@activ8.net.au

## direct TEMPORARY FENCING

FOR HIRE - SUPPLIED & ERECTED - 7 DAYS  
GEELONG - BELLARINE - COLAC - SURF COAST  
PHONE CAM 0417 310 800

# SOUTH-WEST — PAINTING — GROUP

**Contact us:**



0431 719 218



[www.southwestpaintinggroup.com.au](http://www.southwestpaintinggroup.com.au)



[matt@southwestpainting.com.au](mailto:matt@southwestpainting.com.au)

## We specialise in:

- New Homes
- Texture Feature Finishes
- New and Old Cabinetry Coatings
- Commercial Projects
- Maintenance Work
- Residential Work
- Wallpapering
- Pre-Sale Painting
- Timber Decking Rejuvenations

## M & L DRAYTON

### PLUMBING SERVICES

REG No 24356 C/A No C02594

- Domestic and Rural Plumbing
- Roofing
- Sewerage & Septic
- LPG & Natural Gas Connections
- Motorised Drain Cleaning
- Backhoe Hire

**Phone Mark 5288 7244**

PO BOX 98 WINCHELSEA 3241

**Mobile 0428 520 142**



DRIVEWAYS, CARPORTS, CROSSOVERS,  
FOOTPATHS, SHED SLABS, STAIRS  
HOUSE SLABS, EXPOSED, SEALING & MORE

CONTACT ALISTER NOW FOR A QUOTE

☎ 0411871950

✉ [AMACONCRETING1@GMAIL.COM](mailto:AMACONCRETING1@GMAIL.COM)



## Shares available in your local Community Bank

**Matilda Pink, Branch Manager,  
Community Bank · Anglesea, Lorne and Winchelsea**

Back in 2002 the second of two of the major banks closed its doors in Winchelsea leaving the town without any banking services at a time when the need for physical banking was very high.

This meant that local people and businesses had to travel to either Geelong or Colac to do their banking, which often also resulted in people doing their shopping and buying other services outside of the township which had a huge impact on local businesses.

In response to the closure of the banks, a local steering committee was formed with an aim to establish a Community Bank branch, a locally owned branch bank branch which operates under franchise to the Bendigo Bank.

This involved demonstrating local demand by people pledging to move their bank accounts, and raising capital by people purchasing shares to establish a bank branch to get it up and running.

This was successful and a locally owned a public company was established with local volunteer directors and local shareholders, and the Winchelsea & District Community bank branch was opened in 2003.

The Community Bank branch was like no other bank branch, it was community owned not only providing banking services but also distributing its profits back to the local community groups and shareholders in the form of dividends.

22 years later, the local Community Bank company, Corangamite Financial Services Ltd has grown to 3 branches in Winchelsea, Anglesea and Lorne, has 19 employees and 9 volunteer Directors (4 of whom started the original company), holds almost \$500m in banking business, returned over \$4.5m to the local community groups across the Surf Coast Shire.

You too can own shares in Corangamite Financial Services Ltd. There are approx. 500 locally connected shareholders, many of whom are the original investors from 22 years that have received annual dividends and are the foundation for all the good things that the Community Bank has done.

These shares have been tightly held for many years but as time has passed some of our original shareholders are leaving their shareholdings as part of their legacy, creating opportunities for new community members to become owners and continue supporting the local Community Bank.

If you would like to become a Community Bank shareholder or would like further information contact us.

**Drop and speak to one of our Managers at the Winchelsea, Anglesea or Lorne branches or call on 5267-3189 or visit the Investor & Shareholder pages on the Bank website <https://www.bendigobank.com.au/branch/vic/community-bank-winchelsea-district/>**

## Diamond Dot

**Tracey Drayton**

Diamond dot art is like painting using beads instead of paint. You can do other things like key rings and magnets. Turn your favourite picture into a beaded picture. You can make lots of things using the beads. We will have some kits for sale on the day. Come on down and have a look and we'll show how it's done we have a sample that you can try

Here is a sample of some beaded items



**11-4pm Saturday 5 April 2025**

**Senior Citizens Centre,  
Harding St Winchelsea**

**\$10 Entry  
incl Lunch and Afternoon Tea**



## COMMUNITY CO-WORKING & STUDY SPACE

9am - 2pm Mondays and Thursdays  
\$10 Flat rate no subscription required.

### Vinyasa Yoga

**Tuesday evenings at 7pm in the Hall**  
**11<sup>th</sup> of Feb – 25<sup>th</sup> March**

Join Kate for pose alignment, pranayama, meditation, yoga philosophy & mindful movement. \$23 per class.

### Mother Goose Song & Rhyme

**Every Wednesday at 2pm**

During school terms

For parents and caregivers with children of all ages. Sessions are led by Child and Family Health team members. **FREE**, No bookings required just come along and join in!

### Winchelsea Knitting Group

**Thursday Mornings 10.30 – 12pm**

All welcome, Learn to knit or bring a project to work on whilst enjoying a cuppa and a chat at Winchelsea Community House.

### Tai Chi

**Friday Mornings**  
**9.00am – 10.00am**

In the Helen Verity Room,  
Winchelsea community house  
**\$10 per session**

### Phonics with robot Reg

**Friday Mornings**

**Walkers – 3 yrs 10.15am**

**Pre-School 3 – 5yrs 11.15am**

*'A Fun, High energy class to Introduce and teach phonics skills'*

**Bookings at [robotreg.com.au/](http://robotreg.com.au/)**

### Chatty Café

**Fridays 10.30pm – 12.30pm**

**"Sip, Chat, Share, Care"**

Winchelsea Shire Hall

Everyone Welcome, Collection tin for donations.

### Flow Yoga

**Saturday mornings at 8am**  
**8<sup>th</sup> of Feb – 29<sup>th</sup> March**

An inclusive, all abilities class. Build strength, clarity and bliss as you move through a dynamic whole body experience. A playful, powerful class that leaves you feeling refreshed and uplifted. \$23 per class.

### Crochet Group

**1.30pm in the Winchelsea Community Centre**

**Every Second Saturday**

**Next class March 22nd**

**\$5 per class**

### Tuesday March 18th



**ARE YOU BOGGED MATE?**



*IN WINCH*

MENS NIGHT WITH MARY O'BRIEN

MARCH 18TH

6.30-8PM



Scan the QR Code to book your (FREE) ticket! For you, and a mate!



**Mon - Fri 9-2 at Winch House**

# Winchelsea Community Dinner

## Celebrating the essence of community

Tara Quin

Mark your calendars for March 29, as Winchelsea gears up for an unforgettable evening of connection and celebration at the Community Dinner. This event is more than just a meal; it's a chance to weave the fabric of our community tighter, one story at a time.



Picture this: the sun setting over our charming town, the air buzzing with laughter and the aroma of home-cooked dishes. Long-time residents share tales of Winchelsea's past, while newcomers bring fresh energy and excitement. It's a night where generations meet, and everyone, young and old, finds a place at the table.

The venue for this heartwarming gathering is St John the Baptist Catholic Church Hall, accessible via Harding Street. To keep the spirit of community alive, we're asking for a gold coin donation at the door to help cover costs and to give thanks to our gracious hosts.



Here's the twist – the dinner is a potluck! We invite you to bring your favourite dish, whether it's a family recipe or a local favourite or even something bought from your favourite store. Imagine the variety of flavours, each dish telling its own story, crafted with love by your neighbours. It's a culinary adventure that promises to delight your taste buds and spark conversations.

Long tables will be set up, creating a cozy, communal atmosphere. This setup encourages everyone to mingle, share stories, and make new friends. It's a perfect opportunity to break the ice and build connections that last beyond the evening.

To join this celebration of community spirit, simply RSVP on the event's Facebook page, by using the QR code below. Feel free to call or text if you don't use Facebook. Keep an eye out for more details in the shop windows of local businesses.

Don't miss out on this chance to be part of something special. The Winchelsea Community Dinner is set to become a beloved tradition, celebrating the essence of our town – its people.

If you have any questions, reach out via the Facebook page (scan the QR code for quick access) or contact Jess on 0409 536 752. We're also looking for sponsors and volunteers to make this and future events a success.

We can't wait to see you there, sharing in the laughter, the stories, and the delicious food that make Winchelsea such a wonderful place to call home.

**6.30pm 29 March 2025**

**St John the Baptist Catholic Church Hall,  
5 Mercer Street, accessible via Harding Street.**

**Bring a plate/gold coin/nothing. Kids welcome.  
Alcohol free**

**Enquiries Jess on 0409 536 752**

**RSVP on the event's Facebook page  
<https://www.facebook.com/events/1268149947601233>,  
by using the QR code.**





# SERVICES & ACTIVITIES IN WINCHELSEA

## VLINe TRAIN SERVICES

### TO MELBOURNE:

Mon - Fri 6.21(coach) 07.55, 11.10, 14.04, 16.58, 19.21  
Sat - Sun 9.34, 14.04, 16.58 19.18

### TO WARRNAMBOOL:

Mon - Fri 8.58, 11.51, 14.46, 17.28 (coach), 18.43, 20.53  
Sat - Sun 8.48, 11.41, 14.46, 20.38



## COUNTRY WOMEN'S ASSOCIATION

7pm second Wednesday of month  
Winchelsea Senior Citizens' Hall

**Join us.** *A role for everyone*



Nationally accredited training to help our community.  
Pop in to meet your crew **Wednesdays 7:30pm**

**Winchelsea Unit** 325 Mousley Drive **132 500**

## Winchelsea and District COMBINED PROBUS CLUB



Senior Citizens Rooms,  
Harding St, Winchelsea.  
New members always welcome.  
Enquiries Lorraine 0417 467 927



## SOCIAL BRIDGE

Every Tuesday 10.30 am - 1.00 pm  
Senior Citizens Centre  
36 Harding Street Winchelsea  
New players always welcome  
Contact Elaine Atkinson 0458009616

## WINCHELSEA TRANSFER STATION

55 Cressy Road, Winchelsea

Tuesday	2pm-4pm	Saturday	1.30-3.30pm
Thursday	2pm-4pm	Sunday	9.30-12.30pm

Closed on Christmas Day,  
but open on other public holidays  
that fall during their normal operating hours.  
[www.surfcoast.vic.gov.au/disposalsites](http://www.surfcoast.vic.gov.au/disposalsites)



GIRL GUIDES  
AUSTRALIA  
VICTORIA

## WINCHELSEA GIRL GUIDES

Our Unit meets at the Catholic Church Hall,  
Harding St Winchelsea each Monday 4.30pm-6pm  
All girls 5yrs- 15yrs Welcome!  
Contact Yvonne Orchard 0448 672 630  
or Lily Del Rennie Ph. 0428 936 441



## 1st Modda & 1st Winchelsea SCOUT GROUP

**Joeys:** Tuesdays of school term 5-6pm  
**Cubs:** Mondays of school term 6:30-8pm  
**Scouts:** Tuesdays of school term 6:30-8:30pm  
All at Modewarre Hall, Cape Otway Rd  
**Venturers:** Wed at Walton's Rd Venturer Den  
Contact Marie McPadden 0409 330147



## BUS TO THE HUB

For reservations on the weekly bus  
to the Eastern Reserve Hub,  
please phone 52671202.

## SURF COAST MOBILE LIBRARY

**Hesse St, Fridays, 2pm-5pm**  
Surf Coast Mobile Library  
parked in Hesse Street (outside Shire Hall)  
Fridays 2:00 and 5:00pm unless it is a Public Holiday.

## WINCHELSEA TAXI

0429 672 888 or 5267 2888

Wheelchair accessible  
10 seater bus available.

## WINCHELSEA PLAYGROUP

Every second Thursday 10am-12pm  
St Thomas Anglican Church Hall  
cnr Barwon Tce and Hopkins St, Winchelsea  
Contact: Danni Menzies 0432019944  
[winchelseaplaygroup@gmail.com](mailto:winchelseaplaygroup@gmail.com)  
Facebook - Winchelsea Playgroup 2019  
**New families welcome**

## Winchelsea Gardeners Meet

### Tash Craven

We're giving our Produce Swap a little refresh! From now on, we're calling it the Winchelsea Gardeners Meet (and produce swap) because while swapping is great, the real heart of it has always been about bringing together people who love growing things. And we don't want to discourage those who don't have veggies, to not come.

So whether your garden is overflowing or you just love chatting about gardening, come along! No need to bring anything, just yourself. Grab a coffee, meet some like-minded locals, and have a good chat about all things gardening. If you do have something to share, that's a bonus, but it's definitely not a requirement.

- **Second Sunday of each month**
- **9-10 AM**
- **5 Main St, Winchelsea  
(Next to Barwon Hotel)**

Would love to see you there! —  
with Sean Hopgood and Michael Wood.

<https://www.facebook.com/share/18GLmRRrXn/?mibextid=wwXlfr>



Winchelsea Harvest's

# GARDENERS MEET & PRODUCE SWAP

SECOND SUNDAY EACH MONTH

9-10AM

WHAT TO SWAP

HOME-GROWN PRODUCE,  
COMPOST SUPPLIES, BAKED GOODS,  
SEEDS, PRESERVES.

5 MAIN ST  
WINCHELSEA

THE HOUSE NEXT TO THE BARWON HOTEL

FIND US ON INSTAGRAM & FACEBOOK

Winchelsea Harvest

SWAP & SOCIALISE

BUILDING COMMUNITY

## Non-voters asked to explain why they didn't vote in the 2024 local council elections

### Victorian Electoral Commission

The Victorian Electoral Commission (VEC) is urging Victorians not to ignore a request for an explanation as to why they appear not to have voted in the last local council elections in October 2024.

The VEC has issued 530,000 'Apparent failure to vote notices' and recipients must respond by the 28-day deadline with a detailed explanation.

This is an opportunity to avoid a fine if non-voters provide a detailed response with supporting documentation. The penalty is \$99.

Electoral Commissioner Sven Bluemmel said 'If you need help understanding what the notice means and what you need to do, you can call us on 1300 551 575 or visit [vec.vic.gov.au](http://vec.vic.gov.au).'

'Also sign up to our VoterAlert service, to make sure you're notified when there's a state or local council election you need to vote in.'

The VEC issued VoterAlert reminders by SMS and email at key points in the election to 2.5 million enrolled voters who had provided their details. They included reminders on the close of roll date and a reminder to vote. People can sign up at any time to be reminded to vote in all future state and local council elections at: [vec.vic.gov.au/VoterAlert](http://vec.vic.gov.au/VoterAlert).

## Safe and fair workplaces for women

### Victorian State Government

The Victorian Government leads the nation on gender equality – but women still face disproportionate levels of harassment, discrimination, abuse and underpayment at work.

Minister for Women Natalie Hutchins today announced a \$5.5 million investment in a new Safe Workplaces for Women Initiative, which will change culture and attitudes to women in the workplace.

Working in partnership with both employees and employers through Victorian Trades Hall Council (VTHC), the Victorian Chamber of Industry and Commerce (VCCI) and the Working Women's Centre Victoria, the initiative will drive action to make sure people understand their rights, their legal obligations and can access support.

Victorian Trades Hall Council will deliver safe workplaces training and conduct outreach with women workers to respond to the issues impacting them at work.

The Victorian Chamber of Industry and Commerce will be supported to work with small to medium size businesses to understand their legal obligations and address important gender issues in the workplace.

The Working Women's Centre Victoria will use funding to expand their rural and regional outreach services so that every woman across Victoria can access legal support and services.

The *Safe Workplaces for Women Initiative* is part of the Strengthening Women's Safety Package announced last year – driving action at every stage to better respond to victims, deliver a stronger justice response that holds offenders to account, and continuing our world-leading prevention response.







**5234 6585 0417 385 984**

*For all your septic tank, grease traps  
and interceptor pits servicing.  
Locally owned and operated*

**WINCH WEBSITES**  
WEB SOLUTIONS SIMPLIFIED.

**WEBSITES**

**GROW business  
INCREASE reach  
SAVE time**



Find out what a website  
could do for you  
[winchwebsites.com.au](http://winchwebsites.com.au)  
**04 887766 20**

Water Delivery



**WAZZA'S**  
WATER CARTAGE

*Stainless Tanker Up to 22,000 ltr loads  
Barwon Water Registered*

**Domestic & Rural Water Supplies**

Call Wazza

Mob: 0428 877 260

Email: [wazza@wazzas.com.au](mailto:wazza@wazzas.com.au) Web: [wazzaswater.com](http://wazzaswater.com)

**Knuckey's Winchelsea**

**Ph: 5267 2011**

Knuckey's have in stock a complete  
range of batteries to suit tractor,  
heavy machinery, cars, utes

The largest range of the best oil for  
your vehicles—**CASTROL**—  
*'when only the best will do'*

The largest range of V belts.  
A, B, C, D M Sections  
Bolts and nuts for all occasions  
Steel cut to size

**OZ TREES NURSERY**

**& TREE PLANTING SERVICES**

- Affordable seedlings—over 200 species
- Complete plantation service—farm forestry, shelter, aesthetics
- Deep ripping & mound ploughing. Rotary bed forming
- Our experienced staff will help you select species for your site conditions and needs

Also available—tree planting tools, milk cartons, plastic tree guards & bamboo stakes



569 Warrowie Rd. Colac  
P: 5233 6280 F: 5233 6393  
E: [info@oztrees.com.au](mailto:info@oztrees.com.au)  
W: [www.oztrees.com.au](http://www.oztrees.com.au)  
Open Monday—Friday  
9am—4:30pm

**Phone OzTrees for professional advice,**



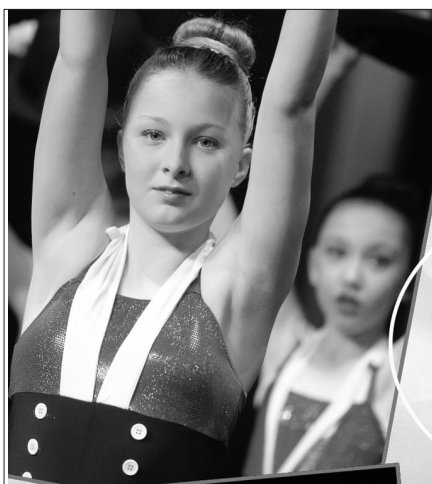
**mainly music**  
est. 1990

**Fun, Interactive music sessions for  
pre-school children (0-4 y.o.) and  
parents/caregivers**

**When:** Mondays from 10 to 11 am  
(runs during school terms)

**Where:** St Thomas' Hall  
25 Barwon Tce.

**To Enquire ring: 0407838256**



**DANCE  
CLASSES**

**TAKING ENROLMENTS NOW  
FOR OUR WINCHELSEA STUDIO**

**PRE-SCHOOLERS - ADULTS  
CONTROLLED CLASS SIZES  
JAZZ - THEATRICAL TAP - CLASSICAL BALLET  
HIP-HOP - CONTEMPORARY DANCE**

**ENROL TODAY**

[WWW.MELSDANCECENTRAL.COM.AU](http://WWW.MELSDANCECENTRAL.COM.AU)



**Your Taxation  
&  
Superannuation  
Specialists.**

Winchelsea

**5267 2673**

[www.surftax.com.au](http://www.surftax.com.au)

ven1g10064

# Winchelsea Churches



## Winchelsea Uniting Church

0475 777 301

uca.winchelsea@gmail.com

Hesse St, Winchelsea 3241

Services 9.30am Sundays

## St John the Baptist Catholic Church

Father Joseph Panackal

0404598558

Harding St, Winchelsea 3241

MASS 6pm Sat. MAR. 1, 8, 22, 29

### St. Joseph's Parish

### 150 Th Anniversary Mass

Sunday March 16th

11am @ Meredith

All Welcome

## St Thomas' Anglican Church

Rev'd Phil Jacobson

0477 672 042

stthomaswac@gmail.com

Barwon Tce, Winchelsea

Service 10am

## Thought for the Week

"Look to this day ...

In it lie the realities and verities of  
existence, the bliss of growth  
the splendor of action,  
the glory of power.

For yesterday is but a dream and  
tomorrow is only a vision.

But today, well-lived,  
makes every yesterday a dream of  
happiness and every tomorrow  
a vision of hope."

"Have a Blessed week."

**John Bader,**  
Former U/C Accredited  
Lay Preacher

## In the garden

Judy Cameron

Hopefully we will get some good rain soon to soften the soil. Now the time is to prepare those vegetable beds for the Autumn plantings. Here are some suggestions.

<i>Southern Victoria planting</i>	Apr	May
Asparagus crown		x
Beans, Broad	x	x
Bok Choy	x	
Broccoli*	x	x
Cabbage	x	x
Carrots	x	x
Cauliflower	x	x
Cress	x	x
Endive	x	x
Garlic, cloves	x	x
Onions	x	x
Onions, Spring	x	x
Parsley	x	
Parsnips	x	
Potatoes		x
Radishes	x	x
Salsify	x	
Shallots, cloves	x	x
Spinach	x	x

\*Broccoli – avoid bugs by planting May to July.



52672192
R & K Creative Framing
for all your framing needs

free quotes  
pension discount  
specialist in Age &  
Disability Modifications

Ray & Kim Jansen  
10 Witcombe st  
Winchelsea 3241  
0414672192

Ray The Home  
Maintenance HANDYMAN  
abn 47928623462



## Winchelsea Men's Shed



For The Community

51 Hesse Street

Every Wednesday from 9:30am

New members always welcome

For more detail contact:

Ray Atkinson (Co-ordinator)

0407 839 139

or

winchmenshed@gmail.com

**Need a job done?**  
Woodworking jobs,  
furniture repairs, small jobs.  
Drop in and talk to us.

## MRP Steelworx

Matthew Partridge

p 0418 672 334

e mrpsteelworx@yahoo.com.au

### Welding Service

- Onsite welding
- Farm maintenance
- Farm machinery & equipment repairs
- Cattle & sheep yards
- Custom built trailers
- Supply & install gates





## RACV safety tips to avoid wildlife while driving

### RACV

RACV is advising Victorians to be aware of wildlife on the roads to help ensure their safety and avoid vehicle damage.

Wildlife Victoria data shows the number of animals killed or injured by a vehicle in Victoria has surged in the past four years, with 15,206 wildlife "hit by a vehicle" in the year ending 30 June 2024. This is a 43% increase on the previous year, although the number could be much higher because many incidents are not reported.

RACV Head of Motor Insurance and Roadside Products, Kirsty Hayes, encouraged Victorian drivers to be aware of wildlife while driving and adopt a number of safe driving practices. "6,969 claims involved impact with an animal in 2024," she said. "By looking out for wildlife and driving at a safe speed you can reduce your chances of hitting an animal."

### How to avoid hitting wildlife and what to do if you do:

- Reduce your speed. This will give you a greater response time and braking distance which could help you avoid an animal collision. If you do spot an animal on the road, slow down and prepare to brake if necessary. Avoid trying to swerve around the animal as you may lose control of your vehicle.
- Avoid driving at dusk and dawn when many native species are most active. If you do have to drive at this time, ensure you actively look ahead and use high beams in poor visibility – however ensure you dim them if you see a car approaching.
- If you do hit wildlife, safely park your vehicle off the road, turn on your hazards and check that you and your passengers are unharmed before checking on the animal. If anyone is injured, call 000.
- Call Wildlife Victoria on 03 8400 7300 to report the incident. Their Emergency Response Service will provide free advice and assistance, 24/7.
- If you're concerned that the injured or dead animal will create a hazard for other road users, there are other services that may be able to assist. If you're on a toll road, contact the operator. For major roads, call VicRoads, and on local roads contact the local council (if it's during office hours).

**For more information on what to do if you collide with wildlife visit [racv.com.au](http://racv.com.au)**

## New laws make renting fairer

Victorian State Government



The Victorian Government's strong new rental protection laws have passed the Victorian Parliament – making renting fairer for Victorians and building on the more than 130 reforms introduced since 2021.

The Consumer and Planning Legislation Amendment (Housing Statement Reform) Bill 2024 delivers reforms to increase renter protections and cements Victoria as the best state in the nation for renters rights. This includes:

- Stopping all types of rental bidding to ensure renters are getting a fair price.
- Changing the notice period from 60 to 90 days, giving renters more time when they receive a notice of rental increase or notice to vacate.
- Banning no fault evictions so renters can't be kicked out of their home for no reason.
- New simplified standard application form for renters.
- Real estate agents will need to ensure they protect the information renters provide in their applications, adhering to privacy requirements.
- It will be an offence for renters to be charged fees by rent tech platforms when making a rental application or for paying their rent.
- Real estate agents, property managers, owners corporations managers and conveyancers will be required to be registered and undertake ongoing professional development.
- Penalties for real estate agents and sellers who break the law will be increased to a maximum of \$47,422. These fines will apply to underquoting – advertising a price below the auction reserve or asking price – and making false and misleading representations during the property sale process.
- Annual smoke alarm safety checks will be mandatory for all rental properties
- The Director of Consumer Affairs and VCAT will have additional powers when considering rent increase reviews.
- It will be mandatory for properties to meet minimum standards when advertised for rent, not when the tenant picks up the keys.

The new laws will come into effect in November with additional reforms announced last October to be introduced in a Bill later this year.

## Help stop salvinia

### AgVic

Salvinia molesta is a highly invasive prohibited weed. It has two kinds of leaves, floating and under-water.

It is illegal to grow, display, buy, sell or share salvinia anywhere in Victoria.

Report salvinia - call 136 186, email [weed.spotters@agriculture.vic.gov.au](mailto:weed.spotters@agriculture.vic.gov.au) or visit [agriculture.vic.gov.au/salvinia](http://agriculture.vic.gov.au/salvinia)



# WINCHELSEA GUN CLUB

Winchelsea Common, Witcombe and Hopkins Streets, Winchelsea



## WINCHELSEA GUN CLUB

Sandra Jones

With 240 members, the Gun Club was formed in 1954 to assist in the training of persons in safety and marksmanship at a controlled clay target range, to equip them to hunt foxes as a service to local farmers.

Prior to that time those skills could be attained while hunting rabbits. Denied of their readily available food source foxes then turned their attention to native wildlife, farm animals and poultry.

From these early beginnings the Winchelsea Fox Hunters was formed. As of 2015 12,000 foxes had been eradicated from farms in the immediate region. Most of those hunting foxes are or have been members of Winchelsea Gun Club.

In 1979 when the Club was reformed it received strong support from the Shire.



However in 2015 the Shire refused to grant them a planning permit. They directed the Club to leave the Winchelsea Common in Feb 2013. The club investigated many other sites but none was found.

Two girls who competed as juniors went on to represent Australia at the Olympics.

In addition substantial funds to the Winchelsea Lions Club were generated through its catering services to the Club which also conducted a special annual fund raising event for the Winchelsea Hospital.

## WINCHELSEA HISTORICAL SOCIETY

Hesse Street Cnr Princes Highway, Winchelsea 3241

Wednesdays 1 - 4pm, Fridays 10 - 3pm



*All About* **Mowers & Chainsaws**

Repairs to all makes and models of ride on mowers, domestic mowers, pumps, chainsaws, brushcutters and small engines.

Trading Hours: Mon - Fri 8am - 5pm Saturday 8am - 12 noon

**5267 2266** Cnr Princes Hwy & Lennox St Winchelsea  
[www.allaboutmowers.com.au](http://www.allaboutmowers.com.au)  
[accounts@allaboutmowers.com.au](mailto:accounts@allaboutmowers.com.au)

FERRIS CDX STIHL BRIGGS & STRATTON VICTA

**IGA**

**Winchelsea Supermarket**

Trading Hours  
**Monday to Saturday**  
 8.30am to 7.30pm  
**Sunday**  
 10am to 7pm  
**Ph: 5267 2676**  
 29 Main St, Winchelsea

 **SOUTHERN GRAIN STORAGE PTY. LTD.**


AG SUPPLIES FERTILISER GRAIN STORAGE SEED CLEANING

**(03) 5267 2351**



5234 6585 0417 385 984  
 For all your domestic & stock water.  
 Also available for road and civil construction  
 Local owned and operated.

**TRENCHES & HOLES PTY LTD.**



**PHILLIP ROBERTSON**  
 ☎ 0427 672 945  
**WINCHELSEA**

- General Earth Works
- Driveways
- Trencher
- Kanga Loader
- Grader
- Excavator Work (3.5 & 6.5 Tonne)
- Tip Truck
- Rock Breaker
- Post Holes & Shed Footings

A.B.N 74006896898

**Antique Repairs**

By **Doug Burns** est. 1976

- All Furniture
- French polishing
- Carving
- Veneering
- Wood Turning
- Porcelain



*Unusual Requests Welcome*

180 Barwon Terrace, Winchelsea

**0428 672 704**

 **Café La Hoot**

have you tried  
 'owl' coffee?

1 willis st [cafelahoot@gmail.com](mailto:cafelahoot@gmail.com) 0407 528 999

# Amnesty for kerbside waste bins



Surf Coast Shire Council is holding a bin amnesty to collect extra unpaid kerbside waste bins.

Each household pays a waste charge through their rates for collection of four bins, one for each type of kerbside waste that is collected: red lidded bin for landfill, yellow lidded bin for recycling, lime green lidded bin for FOGO (Food Organics and Garden Organics) and purple lidded bin for glass only.

Households can request extra bins or upgrade to a larger size bin with user pays fees applying to cover costs. The bins should stay at a property when it is sold and council notified.

"Collecting unpaid kerbside waste bins is a cost to the community, with ratepayers covering the cost for others," said Chris Pike, General Manager, Placemaking and Environment.

"We want to ensure the system is working effectively and fair for everyone, so we're making some changes. All households that

have paid for an extra bin or a larger bin will be receiving a letter explaining what bins they have on their property."

"At the same time Council staff have been placing stickers on these extra bins as we prepare to audit them."

Once bin stickering is complete, Council's waste contractor will stop emptying extra or larger bins that are not identified with the correct sticker. Council staff will then remove these bins.

All Council kerbside waste bins have a Surf Coast Shire logo stamped into the bin. Any bins without logos will not be emptied.

If you have a question about what bins are at your property and to check if you have any extra bins call Council on 5261 0600 or email [info@surfcoast.vic.gov.au](mailto:info@surfcoast.vic.gov.au) and include 'Bin Amnesty' in the subject line.

**More information about bin services including the bin amnesty and cancelling extra or larger bins is available at [surfcoast.vic.gov.au/BinServices](https://surfcoast.vic.gov.au/BinServices).**



## The Climate Report

Judy Cameron

### Half of world's CO2 emissions come from 36 fossil fuel firms, study shows

From <https://www.theguardian.com/environment/2025/mar/05>

**Damian Carrington** *Environment editor*

Global emissions must fall by 45% by 2030 if the world is to have a good chance of limiting temperature rise to 1.5C, the internationally agreed target. However, emissions are still rising, supercharging the extreme weather that is taking lives and livelihoods across the planet.

The International Energy Agency has said new fossil fuel projects started after 2021 are incompatible with reaching net zero emissions by 2050. Most of the 169 companies in the Carbon Majors database increased their emissions in 2023, which was the hottest year on record at the time.

"These companies are keeping the world hooked on fossil fuels with no plans to slow production," said Christiana Figueres, the UN's climate chief when the landmark 2015 Paris agreement was delivered. "The science is clear: we cannot move backwards to more fossil fuels and more extraction. Instead, we must move forward to the many possibilities of a decarbonised economic system that works for people and the planet."

### Oil companies are dropping renewable goals — and more importantly, expanding fossil fuels

From <https://www.msn.com/en-us/money/markets/oil-companies-are-dropping-renewable-goals-and-more-importantly-expanding-fossil-fuels/ar-AA1Ar3G0>

Last week, British Petroleum announced that it was slashing more than \$5 billion in planned green energy investments. It

was a marked departure from the early 2000s, when the oil giant branded itself as "beyond petroleum," and even 2020, when the company targeted a 20-fold increase in its renewables portfolio.

"Today, we have fundamentally reset BP's strategy," said BP's CEO, Murray Auchincloss, as part of the most recent announcement. "This is a reset BP, with an unwavering focus on growing long-term shareholder value."

BP isn't the only oil giant rolling back its climate commitments. Shell and Norway's state-controlled Equinor have also made similar moves recently. But, while the news has caught headlines, experts say that the moves will have little impact on the larger renewables industry — and that, from a climate perspective, the companies' proposed increase in fossil fuel production is much more alarming.

PS: For millennia atmospheric carbon dioxide had never been above 300ppm

In May 2025, atmospheric carbon dioxide levels are forecast to be 429.6 ppm.

This will be the highest atmospheric CO2 concentration for over 2 million years.

This could be a blip that will soon reverse, or it could be important (in which case it's likely to be mostly bad news).

The oceans are getting hotter, which would lead one to expect more water would be evaporating, leading to more rain. And for 20 years that was the case, but then things turned around, apparently because of a shift in wind patterns.





# WINCHELSEA FACEBOOK



Community, Sports, Churches and Non-profits

What's on in Winchelsea	facebook.com/WhatsoninWinchelsea
Winchelsea FREE	facebook.com/groups/winchelseafree
Winchelsea Community Information	facebook.com/groups/207538644446972
Winchelsea Classifieds 3241	facebook.com/groups/216942861684082
Winchelsea Lost and Found	facebook.com/groups/768187693217518
Winchelsea Op Shop	facebook.com/HospitalAuxiliaryOpShopWinchelsea
Winchelsea Shire Hall	facebook.com/WinchelseaShireHall
Winchelsea Community House	facebook.com/winchelseacommunityhouse
The Green Winchelsea Residents	facebook.com/groups/515322772623126
Growing Winchelsea Inc	facebook.com/growingwinch
Winchelsea Star	facebook.com/TheWinchelseaStar
Winchelsea Movie Club	facebook.com/winchelseamovies
Winchelsea Community Market	facebook.com/100083362387611
Winchelsea Land and River Care Group	facebook.com/envirowinchelsea/
Upper Barwon Landcare Network	facebook.com/UpperBarwonLandcare
Winchelsea & District Historical Society Inc	facebook.com/Winchelseaanddistricthistoricalsociety/
Winchelsea Wildlife Shelter	www.winchelseawildlifeshelter.com/
SCARS - Surf Coast Animal Rescue Service	facebook.com/groups/415211698950674
Winchelsea Gardeners	facebook.com/groups/779878518703025
Winchelsea & District Historical Society	facebook.com/Winchelseaanddistricthistoricalsociety/
Winchelsea Repertory Society Inc	facebook.com/winchrep/
Winchelsea Globe Theatre	facebook.com/Winchelsea-Globe Theatre-164790897641678
Winchelsea Uniting Church	facebook.com/winchelseaunitingchurch
St Thomas' Anglican Church	facebook.com/StThomasWinchelsea
St John the Baptist Catholic Church	facebook.com/pages/Winchelsea-Catholic-Church/101775670163180
Winchelsea Mainly Music	facebook.com/groups/668500343953191/
Winchelsea Health Club	facebook.com/WinchelseaHealthClub
Winchelsea Playgroup (School terms only)	facebook.com/groups/551663435367031
Winchelsea Girl Guides	www.guidesvic.org.au/
Winchelsea/Modewarre Scouts	facebook.com/1stModewarreScouts
Winchelsea Fire Brigade	facebook.com/winchelseafirebrigade/
Winchelsea SES	facebook.com/groups/WinchSES
Country Women's Association - CWA Winchelsea	facebook.com/pg/CWAWinchelsea/
Winchelsea Bowls Club	facebook.com/Winchelsea-Bowls-Club-533783333344345/
Winchelsea Blues Cricket Club	facebook.com/groups/8999049476/
Winchelsea Blues FC	facebook.com/WinchelseaFNC/
WYLD Winchelsea Youth Leisure and Drop in	facebook.com/groups/569737570027065/
Lions Club of Winchelsea	facebook.com/LionsWinchelsea
Winchelsea Probus	facebook.com/893535194971083
Winchelsea Golf Club	facebook.com/winchelseagc/ facebook.com/groups/1324943804676697
Winchelsea's Zumba Dance Crew .	facebook.com/share/g/1B19EATPVz/

**Scott McDonald**  
0423 413 829



**S.J.R AUTOMOTIVE**  
AGN 942 493 645 39  
13 ALSOP DRIVE, WINCHELSEA VIC 3241

 **Wightons Lawyers**

Dispute Resolution & Litigation  
Debt Collection  
Property Law  
Wills & Estates  
Powers of Attorney  
Business Law  
Family Law

By appointment only

22 Willis Street, Winchelsea  
ph. 5221 8777

[www.wightons.com.au](http://www.wightons.com.au)



**SIMPLE STORAGE SOLUTIONS**

- Personal & Business Storage
- Boat, Caravan & Vehicle Storage
- High Security Premises
- Individually Alarmed Units
- Electric Gate Access
- 7 Day Access & CCTV

**YOUR STORAGE PROBLEMS SOLVED**

**5267 3116**  
6 ALSOP DRIVE, WINCHELSEA 3241



WINCHELSEA PRIMARY SCHOOL  
The Bridge To Life  
2015

# BIN AMNESTY



## Extra wheelie bins at your house?

**We're holding a bin amnesty to collect all unwanted and unpaid extra or upgraded kerbside waste bins.**

Each household pays a waste charge through their rates for collection of four bins:

- FOGO (lime green lid)
- Landfill (red lid)
- Recycling (yellow lid)
- Glass (purple lid)

Not sure if you're paying for extra or upgraded (larger) bins?

Or do you want to organise the removal of extra bins?

Call us on **5261 0600** or email [info@surfcoast.vic.gov.au](mailto:info@surfcoast.vic.gov.au) and include 'Bin Amnesty' in the subject line.

Find out more: [surfcoast.vic.gov.au/BinServices](http://surfcoast.vic.gov.au/BinServices).



## Winchelsea Taxis is now Surfcoast Taxis

Our fleet of vehicles are growing to all late models and we are covering an extended area including Winchelsea, Colac, Bannockburn, Inverleigh, Great Ocean Road and Geelong.

We have a fleet of 10 seater Maxi Vans, all with capacity to carry wheelchairs.

**Surfcoast Taxis Pty Ltd**  
**All Bookings: 0408 325 992**  
**Fax: 5267 2699**  
**Email: [bannotaxis@gmail.com](mailto:bannotaxis@gmail.com)**  
(Admin or Stan 0429 672 888)  
66A Batson Street  
Winchelsea 3241



Accounts NDIS provider. TAC, DVA etc

NDIS provider number 4050001044

NDIS provider number 4050001048

Book your next ride with

 **smartHAIL**

Download on the App Store 





## Notice of the preparation of an amendment to a planning scheme Amendment C147surf

### Overview

Amendment C147surf implements the recommendations of the Surf Coast Planning Scheme Review 2024 into the Surf Coast Planning Scheme. The amendment does this by introducing new and revised local content into the Municipal Planning Strategy, Planning Policy Framework, and schedules to zones, overlays, particular provisions, general provisions, and operational provisions. For further details, refer to the explanatory report about the amendment.

### Details of the amendment

The Surf Coast Shire planning authority has prepared Amendment C147surf to the Surf Coast Planning Scheme.

The land affected by the amendment is all land in Surf Coast Shire.

The amendment proposes to introduce new and revised local content into the Municipal Planning Strategy, Planning Policy Framework, and schedules to zones, overlays, particular provisions, general provisions, and operational provisions to implement the Surf Coast Planning Scheme Review 2024.

You may inspect the amendment, any documents that support the amendment and the explanatory report about the amendment, free of charge, at:

- the Department of Transport and Planning website [planning.vic.gov.au/planning-schemes/amendments/amendments-on-exhibition](http://planning.vic.gov.au/planning-schemes/amendments/amendments-on-exhibition) or by contacting 1800 789 386 to arrange a time to view the amendment documentation;

- The Surf Coast Shire website at [surfcoast.vic.gov.au/C147surf](http://surfcoast.vic.gov.au/C147surf);
- on request, during office hours, at the office of the planning authority, 1 Merrijig Drive, Torquay by contacting (03) 5261 0600 to arrange a time to view the amendment documentation.

Any person may make a submission to the planning authority about the amendment. Submissions must be made in writing providing the submitter's name and contact address, clearly stating the grounds on which the amendment is supported or opposed and indicating what changes (if any) the submitter wishes to make.

Name and contact details of submitters are required for the planning authority to consider submissions and to notify such persons of the opportunity to attend planning authority meetings and any public hearing held to consider submissions.

The closing date for submissions is **18 April 2025**. A submission must be sent to the Coordinator Strategic Planning, Surf Coast Shire, PO Box 350, Torquay, 3228 or submitted online via [surfcoast.vic.gov.au/C147surf](http://surfcoast.vic.gov.au/C147surf).

The planning authority must make a copy of every submission available at its office and/or its website for any person to inspect free of charge until the end of the two months after the amendment comes into operation or lapses.

**Kate Sullivan**  
Manager Integrated Planning

[surfcoast.vic.gov.au](http://surfcoast.vic.gov.au)

## HESSE RURAL HEALTH



Acute Care\*  
Urgent Care\*  
Residential Aged Care\*  
Community Nursing  
Dietetics  
Physiotherapy  
Occupational Therapy

Diabetes Education  
Social Support Groups  
Counselling  
Home Care  
Health Promotion

\* services from Winchelsea only

[www.hesseruralhealth.com.au](http://www.hesseruralhealth.com.au)

P: (03) 5267 1200 E: [reception@hesse.vic.gov.au](mailto:reception@hesse.vic.gov.au)

## Winchelsea Community Foodbank

**Fridays, 12 - 2PM**  
**30-32 Hesse Street Winchelsea**



For more info, contact Tess  
[healthpromotion@hesse.vic.gov.au](mailto:healthpromotion@hesse.vic.gov.au)  
0417 848 292



## TREE WORKS & STUMP GRINDING



Fully insured and qualified  
climbing arborists.

Slashing and fire preparation.

FREE QUOTES  
**0488 553 650**  
Mathieu Vaupres

[www.colactrees.com.au](http://www.colactrees.com.au)

## COMMUNITY CO-WORKING & STUDY SPACE

9am - 2pm Mondays and Thursdays  
\$10 Flat rate no subscription required.



NBN Wi-Fi  
Access to Photocopying and printing  
Whiteboard for brainstorming  
Microwave and fridge and On-Site Espresso Coffee!  
Private meetings and Wide screen TV also available upon request



# M&B WOOD PLUMBING

Call Matt - 0418 319 357  
mbwoodplumbing.au

## Servicing Winchelsea & surrounds

- General maintenance & blocked drains
- Gas fitting & hot water service upgrades
- New homes & renovations

# AlfordBuilt

New Homes, Renovations, Extensions,  
Bathrooms, Decks & Pergolas

0408 583 362

stephen@alfordbuilt.com.au



REGISTERED  
Building Practitioner

# Lupton BUILDERS

SPECIALISING IN QUALITY



REGISTERED  
Building Practitioner

- NEW HOMES
- EXTENSIONS
- RENOVATIONS
- ALTERATIONS
- DECKS
- PERGOLAS
- CARPORTS
- VERANDAS
- RE-CLADS
- BATHROOMS
- WINDOW REPLACEMENTS

Leigh Lupton  
0438 840 104

LEIGHLUPTON17@GMAIL.COM

Est. 1977

## NATURAL GAS CONNECTIONS

### M. & L DRAYTON PLUMBING SERVICES

#### YOUR LOCAL LICENSED

- PLUMBERS (24356)
- GAS FITTERS
- GAS CONVERTERS
- CARBON MONOXIDE TESTING

MARK 0428 520 142

## Green Lead Electrical

Connecting you to a greener future  
REC 23618

0467 097 101



## Servicing Geelong & the Surf Coast

Specialising in all residential electrical work including:

- Switch board & lighting upgrades
- Outdoor lighting
- Electrical safety checks
- Energy efficient LED lighting
- Ceiling sweep fans & ventilation
- Energy saving advice

Phone Martin Wilkinson:

0467 097 101

greenlead@outlook.com

1132268-CG1B-14



# MET BUILDING & CONSTRUCTION

NEW HOMES | EXTENSIONS | RENOVATIONS

Ph: 0409 433 687



REGISTERED  
Building Practitioner





- Domestic and Commercial hire equipment • Industrial welding gas
- Digging and Earthmoving equipment • New trailers and trailer repairs
- Firewood • Stockists of Royal Oil Lubricants products
- LPG for domestic and commercial requirements

Give Chris and the Team a call on **5232 1177** or email [info@colachire.com.au](mailto:info@colachire.com.au)

[www.colachire.com.au](http://www.colachire.com.au)

101 Wallace St Colac 3250



**GREAT Bundle Deal on Bosch Hot Water...** FROM ELGAS  
 Buy any Bosch Bluetooth continuous flow hot water model - 16Litre, 20Litre or 26Litre and **Receive \$100\* in Elgas bonus LPG gas credits**



\*For more details visit [www.elgas.com.au/appliances/bosch-cpt16-20-26-lpg-bundle-sale](http://www.elgas.com.au/appliances/bosch-cpt16-20-26-lpg-bundle-sale)

**AND... for new customers, an additional \$80 WORTH OF LPG GAS CREDITS\*\*** when you open a new LPG Gas account with Elgas



\*\*Further details can be viewed at [www.elgas.com.au](http://www.elgas.com.au)

Ask about the Elgas Easy Payment Plan - 12 months interest free\*\*\* on selected LPG appliances

\*\*\*Further details can be viewed at: [www.elgas.com.au/epp](http://www.elgas.com.au/epp)

Automatic tanker gas bottle refill **OR** gas bottle exchange refill is available for home or business....

Call today or visit our website for our many customer benefits and latest offers

**131 161**  
[www.elgas.com.au](http://www.elgas.com.au)

**ELGAS**



- ❑ LOG BOOK SERVICE
- ❑ AUTO ELECTRICAL
- ❑ TOWING
- ❑ AIR CONDITIONING
- ❑ CLUTCH & BRAKES
- ❑ TYRES
- ❑ WHEEL ALIGNMENT
- ❑ BATTERIES

**CAR, TRUCK REPAIRS & Roadworthys**

**PH: 5267 3001**

**Mob: 0417 137 457**

**17 Alsop Drive**

Visit our new office located at  
 Winchelsea Ag, Horse & Pet

For all your livestock, rural real estate and property management needs, speak to the Charles Stewart team today

Livestock Peter McConachy 0408 522 878

Real Estate Michael Stewart 0418 520 467

Property Management Sarah Higgs 5231 5011



5231 5400  
 15 Murrell Street, Winchelsea



[eldersrealestate.com.au](http://eldersrealestate.com.au)

**Elders**

## You're in Safe Hands With Peter Lindeman Delivering Exceptional Results for Over 20 Years

If you're thinking of selling a Rural or Lifestyle acreage property on the Bellarine, the Greater Geelong region or beyond then think Peter Lindeman.

Peter spent 20 years managing farms before jumping the fence to sell them; and over the last 23 years he's helped over 350 vendors achieve extraordinary results, more often than not surpassing their expectations. Why not let Peter show you how he can help you achieve an outstanding result for your property.

**Peter Lindeman - 0418 525 609**

**RURAL AND LIFESTYLE SALES MANAGER - ELDERS GEELONG**

**E: [peter.lindeman@elders.com.au](mailto:peter.lindeman@elders.com.au)**



# Junior Netball

Shae Callahan

## What a Remarkable Summer for Our Junior Netballers! A huge congratulations to all our junior teams on an incredible season!

Our Under 11s went through the season undefeated— an amazing achievement!

Our Under 13s battled hard and made it to the quarter-finals!

Our Under 15s & Under 17s showcased their talent and determination, both reaching the grand finals!

The club is incredibly proud of these young players for their hard work, sportsmanship, and dedication.

At Winchelsea FNC, we provide a supportive and fun environment where young athletes can develop their netball skills, build friendships, and grow both on and off the court. Whether your child is new to netball or has experience, we welcome everyone!

### Join the 'Baby Blues'!

We're now looking for our next group of junior netballers to join our NetSetGo program, starting in Term 2! This is the perfect introduction to netball for kids, helping them develop skills, confidence, and a love for the game.

Register now: NetSetGo Link <https://registration.netballconnect.com/userRegistration...>



**Are you ready? Let's NET SET GO!**

Join Woolworths NetSetGo, Australia's leading netball program for kids aged 5 to 10. It's where netball begins but the fun never ends!

**Why join?**

- ★ Learn new skills in a fun, supportive environment
- ★ Make friends and build confidence
- ★ Smaller groups means more learning and more laughing
- ★ Aged-based stages, which are welcoming of all experience levels - everyone can join!

Woolworths  
**NET SET GO!**

Contact Shae 0409641550  
callahanshae@gmail.com

Sign up now at [netball.com.au/netsetgo](https://netball.com.au/netsetgo)  
and start your child's lifelong love of team sport today.  
**Venue** Winchelsea FNC, Eastern Reserve  
**Day / Time** Thursday's 4 - 4.45pm  
**Starts** 1st May

### Players Wanted!

We are also looking for players to join our Under 11s and Under 15s teams for the upcoming season. If you're keen to get involved or know someone who is, we'd love to hear from you!

We can't wait to welcome new and returning junior players to the club!



## SEASON UNDEFEATED

UNDER 11'S



## QUARTER FINALISTS

UNDER 13'S



## GRAND FINALISTS

UNDER 15'S




## GRAND FINALISTS

UNDER 17'S










**Family Healthcare - Naturally through Chiropractic**

Get out of pain and back to life.  
Build a foundation for lifelong wellness.  
Perform at your absolute best.





www.onebodychiropractic.com.au

03 52672240 Shop 4/21 Hesse St Winchelsea

Here for your Vitality...



**Casuarina Counselling Therapy**  
*Time For You*

Counselling to help find clarity, understanding and new ways forward for relief from distress of all kinds, including anxiety, depression, addiction, relationship issues.

**Call 0493 988 150 to book appointment**  
Available at The Exchange,  
32-34 Main Rd, Winchelsea



# Lifeline

## 13 11 14



## SUNNY GYM

GYM BUT JOYFUL

**Strength, Mindfulness and Martial Arts in Winchelsea**

Boxing NEW!

Kids Kung Fu

Group Exercise

Personal Training

Qi Gong

sunnygym.com.au



**Moriac Veterinary Clinic**

**0447 781 089**

**PHONE 24 HOURS**

784 Hendy Main Road Moriac

info@moriacvet.com

www.moriacvetclinic.com.au

**HOURS // Monday - Friday: 8am - 5pm**



**Winchelsea Medical Clinic**

**Located at 36 Main Street, Winchelsea 3241**

For any enquires or bookings please contact the clinic on 5292 8028.  
Or visit our website: [www.winchmc.com.au](http://www.winchmc.com.au)

Opening Hours:

Monday - Friday 8:00am - 5:00pm  
(Monday Evening Clinics available and selected Saturdays)



Available on the  
**App Store**

GET IT ON  
**Google Play**

Our clinic accepts online bookings via the app called HotDoc.  
Download the app on the App Store or Google Play or head to our website.



*Caring for families since 1883*

*"We are here to help you tell your loved one's story; however they want it told"*

Tuckers

Funeral & Bereavement Service

...for a life worth celebrating

PH: 5221 4788  
[www.tuckers.com.au](http://www.tuckers.com.au)



**Water Supply Specialists**

**WATER SOLUTIONS**

74 Dennis Street, Colac

5231 1861






**ALL THINGS WATER:**

- PUMPS · PIPES
- FITTINGS · TANKS
- POOL CHEMICALS
- IRRIGATION
- WATER PURIFICATION
- SOLAR · REPAIR

# SES





# Winchelsea Bowls Club

Julie Johnson



Winchelsea Div 1 Team

## WINCHELSEA BLUES BOWLS DIVISIONS 1 & 2 BOTH WIN BACK TO BACK PREMIERSHIPS 23/24, 24/25.

In very uncomfortable conditions players gave of their all and were able to pull off a mighty achievement, the bowls were definitely with us!

Congratulations to our coach, all players, members and supporters.

Divisions 1 Midweek and Saturday will now play in Western Region Finals for a berth in Country Week.

**Go Blues Bowls!!**



Winchelsea Div 2 Team

Winchelsea Bowls Club welcomes all visitors. Our Club has a beautiful garden setting in the heart of the town. For the complete newcomer to lawn bowls, looking for a sporting activity that promises much fun and enjoyment with a competitive element, then the friendly, welcoming atmosphere of our Bowling Club is the place to be.





## Sustainable Periods: Making the shift to eco friendly period products



Disposable period products such as pads and tampons, cost thousands of dollars over their lifetime, and are a huge contributor to landfill waste each year.

Using reusable period products is a great solution, it helps you save a lot of money, avoids waste and protects the environment.

Hear from Elana, owner of Cloth Nappy Workshops Melbourne, for a comprehensive introduction and Q&A about eco friendly period products. Learn about the different products, fitting and washing/laundrying and caring for your products.

All participants joining the workshop will receive a voucher for Menstrual Cups Australia Online (MCA) valued at \$50 to purchase your choice of reusable period products! (\*strictly one voucher per participant only).

### Workshop details

**DATE: Wednesday 19 March**

**TIME: 7.30pm – 8.30pm**

**Online Through Zoom.**

The zoom link will be sent prior to the workshop.

This session is LGBTIQA+ inclusive, with no gendered language used. All ages and families are encouraged to attend.

**LIMITED PLACES AVAILABLE!  
REGISTER HERE**

\*Please note this event is for Surf Coast Shire residents only.



This workshop has been made possible thanks to the Department of Energy, Environment and Climate Action (DEECA) Kerbside Reform grant funding.

Find more information about reusable period products at [surfcoast.vic.gov.au/resuableperiodproducts](http://surfcoast.vic.gov.au/resuableperiodproducts)



## Winchelsea Men's Shed



**For The Community**  
Men's Shed Kindling/Offcuts Bags of Kindling/timber offcuts are available for pick up from the Men's Shed on Wednesday's from 9.30 to 2.30.

If you need a delivery made you can call Bill on 0438 083 373. The price for a bag of kindling is now \$7.00 (up from \$5.00).

### Nesting Boxes

Bird or animal nesting boxes are available from The Men's Shed.

These can be made to order.

Call in on any Wednesday to have a chat.

**WINCHELSEA LIONS CLUB**  
ARE SELLING ENVIRONMENTALLY FRIENDLY SHREDDED PAPER COMPRESSED BRICKS FOR YOUR FIRE SAVE ON THE RISING COST OF WOOD BY INCLUDING PAPER BRICKS AS WELL

PACKET OF 4 ROARS (BRICKS)	<b>\$5</b>
ROLL OF PURRS (SMALL ROLLS)	<b>\$2</b>

AVAILABLE AT LIONS PAPER SHED  
36 HARDING STREET  
SATURDAY MORNINGS  
10AM - 12 NOON  
FROM 4<sup>TH</sup> MAY UNTIL SOLD OUT

EFFTPOS AVAILABLE  
CASH ACCEPTED

## WINCHELSEA LIONS CLUB

## PAPER RECYCLING

Paper depot rear of Senior Citizens Rooms  
Harding Street  
NEWSPAPERS, MAGAZINES,  
PHONE BOOKS WANTED



RAISING FUNDS FOR  
OUR TOWN & DISTRICT  
0408 520 606

We'd love to see you!

## WINCHELSEA PLAYGROUP

Each Thursday during school terms.  
Come along between 10AM - 12PM.  
Check out our Facebook Page for more information about the happenings of each session.  
Playgroup Leader - Danni Menzies  
Email: [winchelseaplaygroup@gmail.com](mailto:winchelseaplaygroup@gmail.com)  
St. Thomas's Hall,  
27-29 Barwon Terrace,  
Winchelsea VIC 3241

**\$5 PER FAMILY**  
INCLUDES MORNING TEA & HOT DRINKS FOR CAREGIVERS

Scan to be part of our Facebook Group

## WANT TO JOIN PROBUS?

Enjoy fellowship with other members

Enjoy trips & outings

Listen to guest speakers



Contact Lorraine  
0417 467 927





# Winchelsea Golf Club

45 Anderson Street, Winchelsea 3241 Tel: 0267 2660 winchelseagolf.com.au

Rachel Boddington



## MENS - MID WEEK - WEEKLY STABLEFORD 5/3/25 11 PLAYERS

1st - Bill Spencer (16) 35 points  
2nd - Neif Hickman (10) 33 points C/B  
BDL - Stephen Cole (14) 33 points C/B  
NTP (6th/15th) - Jackpot  
Eagle - Cam Parke 12th Hole

## LADIES - MID WEEK - WEEKLY STABLEFORD 5/3/25

2ND RD Jess Budge Trophy.  
Winner: Di Bartel 37 pts  
R/Up: Sue Cuthbert 34 Pts  
NTP (11th hole): Robyn

## SATURDAY MIXED COMPETITION CLUB CHAMPIONSHIPS 3RD ROUND WARREN STEPHENSON TROPHY - STROKE 8/3/25 - 30 PLAYERS

1st - Lachlan King 78-15-63  
2nd - Michael Bourdouvalis 6-31-65  
3rd - Brent Kahle 74-7-67  
4th - David Harvey 85-17-68  
BDL - Cam Parke 76-7-69 C/B  
BDL - Nick Stone 77-8-69 C/B  
BDL - Russell Holmes 80-10-70 C/B  
BDL - Max Bubb 83-13-70 C/B  
BDL - Tom Shaw 87-16-71 C/B  
NTP - (6th/15th) Cam Parke

## NTP - (8th/17th)

- Matthew Beauchamp  
Golden Hole (11th)  
- Warren Stephenson  
Eagle - Tavae Sauni Jnr 3rd Hole  
Birdie Hole (15th) - Tavae Sauni Jnr

## NEXT SATURDAY - GEOFF MORGAN TROPHY - STROKE

*Come along and have a great round of golf with a fantastic group of people,  
we pride ourselves on being welcoming and enjoying all aspects of golf, both the game and social.*

## The skills you already have, can help you make a positive impact as a Prison Officer.

Discover a rewarding and secure career  
as a Prison Officer. Apply now at  
**Western Plains Correctional Centre, Lara,**  
and receive an \$8,000 sign on bonus\*.



**Corrections  
Victoria**

**Hiring now**

\*Conditions apply.



Authorised by the Victorian Government,  
1 Treasury Place, Melbourne





A family business operating for more than 138 years, HF Richardson services an extensive client base throughout the greater Winchelsea area. Our success is built on a long history of innovation and while we've moved with the times, our basic values of honesty, trust and integrity have remained.



**Eric Foster**  
**0429 499 924**  
Sales Executive



**Ken McDonald**  
**0418 524 150**  
Licensed Estate Agent

**Residential | Rural Lifestyle  
Agricultural Farms**

**HF RICHARDSON**

**PROPERTY**

[www.hfrichardson.com.au](http://www.hfrichardson.com.au)



**Life's busy. Let us help you.**

**Contact us today**

We can help you with:

- Buying your first or next family home
- Saving for your first home
- Residential Investment Lending
- Refinancing from your current lender
- Home loan reviews
- Pre-approvals

With extensive banking experience and financial expertise, we'll help bring your financial goals to life.



**Ebony Berg**  
**0400 784 249**



**Josie Kavenagh**  
**0409 564 192**

**Bendigo Bank**

**Community Bank**  
Winchelsea and District

**Winchelsea  
Star**

ISSN 2202-6851



9 772202 685002

**Since 1977**

**DEFIBRILLATORS IN  
WINCHELSEA**

**Accessible to the public  
24 hours a day**

The Winchelsea Lions Club has compiled a list of public access defibrillators in Winchelsea. If anyone knows any others with 24 hour public access, please let Linda Carter know 0439 817 263.

**Ambulance Victoria**

33 Willis Street

**Bendigo Bank**

11 Main Street

**Globe Theatre (Side entrance)**

17 Willis Street

**Hesse Rural Health**

8 Gosney Street

**Men's Shed**

51 Hesse Street

**Netball Courts**

Eastern Reserve Hopkins St

**Senior Citizens Club**

36 Harding Street

**Uniting Church**

33 Hesse Street

**Winchelsea Bowls Club**

Hesse St,

**Winchelsea Cemetery,**

McConachy St

**Winchelsea Golf Club**

13 Anderson Street

**Winchelsea Primary School**

Main Street

**Wurdale Memorial Hall**

220 Wurdale Road

