

The RayWhite logo is positioned in the top right corner of the image. It consists of the brand name "RayWhite" in a bold, black, sans-serif font, set against a bright yellow rectangular background.

RAY WHITE WHITSUNDAY

# LUXURY HOMES

2022-2023 EDITION



[RAYWHITEWHITSUNDAY.COM.AU](http://RAYWHITEWHITSUNDAY.COM.AU)

Welcome to our Luxury Portfolio eBook of current for sale and recently sold properties in the Whitsundays.

Our team is excited to represent a high percentage of these sales for our clients so we have presented to you a list of currently for sale properties and also sold properties for luxury houses and apartments.

In recent times the number of sales in the Whitsundays luxury market has dramatically increased, with more buyers than ever finding great value in the Whitsunday property prices.

In 2018/2019 there were 7 recorded residential sales above \$1m. In the 2019 calendar year there were 5, in 2020 there were 21 and in 2021 there were around 80 sales. We expect 2023 to continue as cashed up buyers identify the Whitsundays as the place to buy their next home or investment.

We hope you enjoy our Luxury Portfolio as much as we enjoyed listing and selling these beautiful properties. Please feel free to reach out to our sales team if you would like some more information on any of these properties.

Regards,



**Mark Beale**  
Principal  
Ray White Whitsunday  
0404 498 790  
[mark.beale@raywhite.com](mailto:mark.beale@raywhite.com)



*View*  
**Current**  
**Listings**

*View*  
**Sold**  
**Listings**

# Current Listings







## 727 Saltwater Creek Road, *Conway*



4 Beds



2 Baths



2 Cars

Hamilton Island's only Marina side apartments; the complete luxury lifestyle suite. This spectacular first floor, single level residence is one of the most sought-after and exclusive luxury apartments on the Island.

A modern and stylish interior, the home features a sleek sophisticated kitchen, spacious open plan living and dining area. Enjoy a luxurious yet comfortable entertaining areas, both indoors and outdoors. The views are breathtaking from this villa & is further enhanced by an expansive wrap-around entertainer's balcony that boasts the most spectacular views of the marina, Dent Island and beyond.



**Stephanie McWhirter**

0467 677 225

[stephanie.mcwhirter@raywhite.com](mailto:stephanie.mcwhirter@raywhite.com)



**Clarice Davis**

0429 336 449

[clarice.davis@raywhite.com](mailto:clarice.davis@raywhite.com)





## 3/1 Airport Drive, Pavillions, *Hamilton Island*



4 Beds



3 Baths

Hamilton Island's only Marina side apartments; the complete luxury lifestyle suite. This spectacular first floor, single level residence is one of the most sought-after and exclusive luxury apartments on the Island.

A modern and stylish interior, the home features a sleek sophisticated kitchen, spacious open plan living and dining area. Enjoy a luxurious yet comfortable entertaining areas, both indoors and outdoors. The views are breathtaking from this villa & is further enhanced by an expansive wrap-around entertainer's balcony that boasts the most spectacular views of the marina, Dent Island and beyond.

The Villa offers ease of access and parking at the back door. The property is conveniently located within a short walk to Front Street shopping, restaurants, supermarket and the marina precinct, short buggy ride to the beach and main resort.



**Anita Edgar**

0418 732 968

[anita.edgar@raywhite.com](mailto:anita.edgar@raywhite.com)





*The ultimate waterfront luxury villa...*



## 6 Palm Drive, *Cannonvale*



5 Beds



3 Baths



4 Cars

This magnificent property boasts not only the best views in the Whitsundays but also one of the best on the east coast of Australia.

Welcome to your dream home at 6 Palm Drive, Cannonvale in the heart of the Whitsundays - where luxury and stunning sea views come together to create the ultimate coastal living experience.

Built for those who love the water, this lifestyle home offers four levels of pure indulgence, with every main living area providing breathtaking sea views.

Tucked away in a super quiet cul de sac, you'll feel like you're living in your own private oasis.



**Fiona Donnellan**

0432 647 708

[fiona.donnellan@raywhite.com](mailto:fiona.donnellan@raywhite.com)



**Anita Edgar**

0418 732 968

[anita.edgar@raywhite.com](mailto:anita.edgar@raywhite.com)



*Box seat of Airfie Beach...*



## 17/119 Botanica Drive, *Woodward*



5 Beds



3 Baths



2 Cars

Whether you're looking for a permanent home or a vacation getaway this house is all of that and much more! Perfectly situated on a sprawling 1400 sqm lot, with five bedrooms, three bathrooms, a large self-contained granny flat, and a two-car custom-built lock-up garage, this fantastic property offers plenty of space to satisfy all your lifestyle needs.

As soon as you walk in, you'll be blown away by the jaw-dropping ocean and island views. The house is masterfully designed on two levels, with an open-plan layout, and filled with tasteful details and luxurious details that will surely delight even the most demanding buyer.

The gourmet kitchen is well equipped with modern fixtures, quality appliances and ample storage space. Adjacent to it, the open-plan dining/living area is filled with light coming through the vast floor-to-ceiling windows and sliding doors that lead outside. Here, you'll find the incredible outdoor entertaining area, with an expansive wooden deck and a sparkling in-ground pool that overlooks the ocean - it's truly a piece of paradise you can't miss out on!



**Stephanie McWhirter**  
0467 677 225  
[stephanie.mcwhirter@raywhite.com](mailto:stephanie.mcwhirter@raywhite.com)





## 32/144 Shingley Drive, Airlie Beach



3 Beds



2 Baths



2 Cars

Live at the intersection of elegance and coastal beauty in this exclusive apartment, gracefully situated on a lovely peninsula. This prestigious 216sqm floor plan residence offers panoramic views of the marina and Double Cone Islands, creating a daily masterpiece of natural wonders.

You'll adore its sleek, modern design, highlighting the fully furnished interiors. With ducted air conditioning ensuring year-round comfort, this waterfront haven boasts a master bedroom with a walk-through robe to the ensuite, two additional bedrooms with built-ins and a study nook.

Entertain on the covered balcony or in the gourmet kitchen with quality appliances and a large island bench with a breakfast bar.



**Stephanie McWhirter**  
0467 677 225  
[stephanie.mcwhirter@raywhite.com](mailto:stephanie.mcwhirter@raywhite.com)



**Clarice Davis**  
0429 336 449  
[clarice.davis@raywhite.com](mailto:clarice.davis@raywhite.com)





## 64 Stanley Drive, Cannon Valley



4 Beds



2 Baths



2 Cars

Discover your dream family haven in the heart of Whitsunday Acres Estate at 64 Stanley Drive, Cannon Valley. This spacious property offers the perfect blend of space, luxury, and convenience, making it an ideal choice for families seeking the ultimate lifestyle upgrade.

Situated on a sprawling 4229m2 corner lot, this acreage home provides a flowing, sunlit floorplan with four spacious bedrooms, each equipped with modern amenities like fans, built-in robes, and air conditioning. The main bathroom features an elegant freestanding bath, while the master ensuite boasts a corner spa bath for superb relaxation.

Cooks of the house will adore the open kitchen, dining, and entertainment areas, flooded with natural light, and fitted with quality appliances.



**Stephanie McWhirter**  
0467 677 225  
[stephanie.mcwhirter@raywhite.com](mailto:stephanie.mcwhirter@raywhite.com)



**Clarice Davis**  
0429 336 449  
[clarice.davis@raywhite.com](mailto:clarice.davis@raywhite.com)





## 4/5 Acacia Grove, *Hamilton Island*



2 Beds



2 Baths



1 Cars

As you enter Shorelines 4 you are greeted by the spectacular view. On the upper level are the gourmet kitchen & Dining room, complete with stainless steel appliances and Caesar stone bench tops. The spacious dining and living area flows out onto a generous balcony that provides those outstanding views over the Whitsunday turquoise ocean, the sunsets from Shorelines 4 are beautiful. Shorelines 4 is a highly sought after corner/end apartment!

The lower level offers two large bedrooms each with built in robes. The master bedroom boasting stunning views with a private balcony complete with an open style ensuite and spa. This apartment is already well established in the holiday rental market, with the past 12 months demonstrating a very good rental return with the option to utilise the property as often or as little as desired.



**Anita Edgar**  
0418 732 968  
[anita.edgar@raywhite.com](mailto:anita.edgar@raywhite.com)





## 23 Stonehaven Court, *Airlie Beach*



3 Beds



2 Baths



2 Cars

Boasting spectacular ocean and island views, a modern and open-plan 250sqm layout, and an abundance of light throughout, is this gorgeous home, within the prestigious Stonehaven Estate. Situated on an elevated 821sqm block, this property offers a wonderful lifestyle to those who are lucky enough to call it home.

9ft ceilings enhance the sense of space, air-conditioning keeps you cool year-round, and modern finishes and fixtures offer the ultimate comfort and luxury. The gourmet kitchen features a walk-in butler's pantry, Caesarstone soft-close draws and stainless steel appliances, and from here you can move to the open-plan living and dining room or step outside to the expansive entertainer's deck to take full advantage of the breathtaking views.



**Stephanie McWhirter**  
0467 677 225  
[stephanie.mcwhirter@raywhite.com](mailto:stephanie.mcwhirter@raywhite.com)



**Clarice Davis**  
0429 336 449  
[clarice.davis@raywhite.com](mailto:clarice.davis@raywhite.com)







## 2/20 Broadwater Avenue, *Airlie Beach*



4 Beds



4 Baths



3 Cars

A true 'Penthouse' in every sense, this luxury penthouse of 535 m<sup>2</sup> occupies the top two levels of this exclusive boutique development that you will share with only one owner. On entering the residence, you are immediately drawn through the expansive living space to a captivating view across the azure waters of the Coral Sea and the Whitsunday Islands, which is spectacular both by day and by night. For the house's chef, there is a gourmet kitchen with stone benchtops, quality Miele appliances, and four generous bedrooms, each offering a private ensuite for your guest's convenience.

Take the stairs or your private lift to the top floor, where the true magic begins. A second living/entertaining area that flows onto one of the most expansive, private rooftop terraces around with unparalleled views.

The location is second to none, and I would challenge you to find a penthouse like this a mere stone's throw from the water's edge.



**Andrea Clarke**  
0418 796 323  
[andrea.clarke@raywhite.com](mailto:andrea.clarke@raywhite.com)



## 101/33 Port Drive, *Airlie Beach*



3 Beds



2 Baths



2 Cars

Indulge in luxury living in this spacious 3 bedroom, 2 bathroom residence offering a sprawling 170sqm floorplan. Located at the end of the block on the first floor of a sought-after complex, the home is fully furnished and currently part of a holiday let program which offers excellent returns.

Inside, you'll discover a beautifully designed home with swipe card access, ducted air conditioning, plenty of light, timber floors, and a seamless flow-through dining, kitchen, and living area, complemented by bi-fold glass doors leading to the balcony. The kitchen boasts quality appliances, an island bench for food prep and a breakfast bar. Your master bedroom boasts an opulent ensuite and walk-in robes, and each bedroom features its own private balcony.

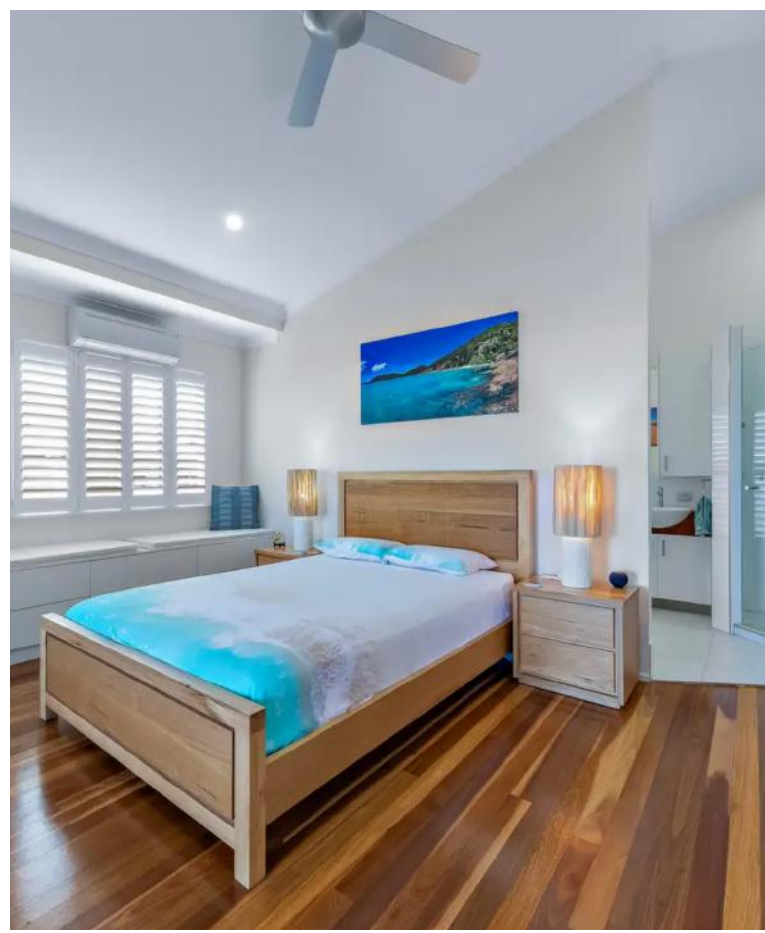


**Stephanie McWhirter**  
0467 677 225  
[stephanie.mcwhirter@raywhite.com](mailto:stephanie.mcwhirter@raywhite.com)



**Clarice Davis**  
0429 336 449  
[clarice.davis@raywhite.com](mailto:clarice.davis@raywhite.com)





## 33 Blackcurrant Drive, *Hideaway Bay*



3 Beds



2 Baths



4 Cars

Step into luxury at this architecturally designed and award-winning residence, boasting unparalleled ocean views of the renowned Whitsunday Islands from the moment you enter. With a sophisticated palette of fresh neutral tones and a seamless indoor/outdoor design, relish the elevated vantage point that captures year-round fresh breezes and provides a stunning backdrop for entertaining friends and family.

This double-story, 3-bedroom, 2-bathroom home showcases expertly landscaped tropical and native gardens, ensuring easy care and low maintenance living. The quality craftsmanship, courtesy of multi-award-winning ABD Designs and construction by River City Homes, is evident throughout the property, earning it multiple design and building accolades.



**Fiona Donnellan**

0432 647 708

[fiona.donnellan@raywhite.com](mailto:fiona.donnellan@raywhite.com)



## 17 Warrain Street, *Shute Harbour*



4 Beds



3 Baths



2 Cars

Perched elegantly above the coral sea, this substantial and awe-inspiring property boasts panoramic vistas of approximately 12 islands, the captivating Shute Bay, and the adjacent Conway peninsulas. An enchanting symphony of nature awaits you - to the magnificent presence of Humpback Whales gracing the scene from July to October. Delight awaits beneath the house's azure surface, where turtles and rays traverse the shallows. The property seamlessly connects to a narrow coastal reserve strip, granting access to secluded foreshores, inviting explorations to nearby islands and beaches via kayaking. Gentle strolls lead to various bush trails, revealing Coral Beach, The Beak, and Mount Roper.

Designed with a meticulous focus on optimizing views, space, natural illumination, and breezy airflow, this home showcases an intriguing architectural design. Its versatile layout incorporates multiple living zones that seamlessly flow into expansive sun-soaked entertainment spaces and lush gardens.



**Fiona Donnellan**

0432 647 708

[fiona.donnellan@raywhite.com](mailto:fiona.donnellan@raywhite.com)



## 3W/12 Whistunday Boulevard, *Hamilton Island*



3 Beds



3 Baths



4 Cars

Bella Vista Apartments on Hamilton Island are renowned for their expansive living areas, generous room size, stunning architectural design and solid construction. Bella Vista West 3 has sweeping ocean views from every aspect.

This stunning, spacious ocean view 3 bedroom, 3 bathroom apartment has recently been renovated to a designer level and affords modern luxury overlooking the Fitzalan Passage to Whitsunday Island.

Once you step through the front doors of Bella Vista you will escape to the ultimate paradise, taking in the spectacular sea breezes, sunrises and sunsets.

This elevated, double-storey, upmarket apartment is surrounded by manicured tropical gardens and breathtaking views. It is complemented by the highly sought-after North-Western aspect that captures the ocean breezes.



**Anita Edgar**

0418 732 968

[anita.edgar@raywhite.com](mailto:anita.edgar@raywhite.com)



## 1/4 Great Northern Highway, *Hamilton Island*



3 Beds



2 Baths



2 Cars

This expansive villa, lovingly treasured by one family since its inception, benefits from a prime elevated position with lovely views towards Catseye Beach. Set in a boutique complex of four villas, the executive residence offers generous light-filled space over three levels, with soaring ceilings and enviable indoor/outdoor living.

One step inside reveals a modern open design with combined lounge/dining/kitchen, flowing out to a private balcony with spectacular leafy outlook. This end Villa has the additional benefit of a side courtyard which provides another al fresco area, and an abundance of natural light from the side windows.

The bedrooms are located on both upper and lower levels, creating a wonderful sense of space and separation, perfect for family life and relaxed entertaining.



**Anita Edgar**

0418 732 968

[anita.edgar@raywhite.com](mailto:anita.edgar@raywhite.com)





## 20/6 Banksia Court, *Hamilton Island*



2 Beds



2 Baths



1 Cars

This property is the perfect option for those looking for a home away from home or an easy, hassle-free investment. With lush gardens and a tranquil lagoon swimming pools make this a stand out location for holiday guests and owners to relax and unwind while on Hamilton Island.

The Anchorage development has always been regarded as a stylish quality built property ahead of its time back in 2004 and it still looks modern with a touch of class.

The open floorplan allows for a spacious dining, kitchen and living area with tiled floors, modern kitchen of granite bench tops and two pack cabinetry. The living area flows outside to a generous sized balcony that overlooks Dent Island, as well as gorgeous ocean views.

The master bedroom has a large ensuite that is better than most luxury hotels, with its own spa bath. The second bedroom is at the rear with its own bathroom and separate toilet.



**Anita Edgar**

0418 732 968

[anita.edgar@raywhite.com](mailto:anita.edgar@raywhite.com)



# Sold Listings









Stephanie McWhirter



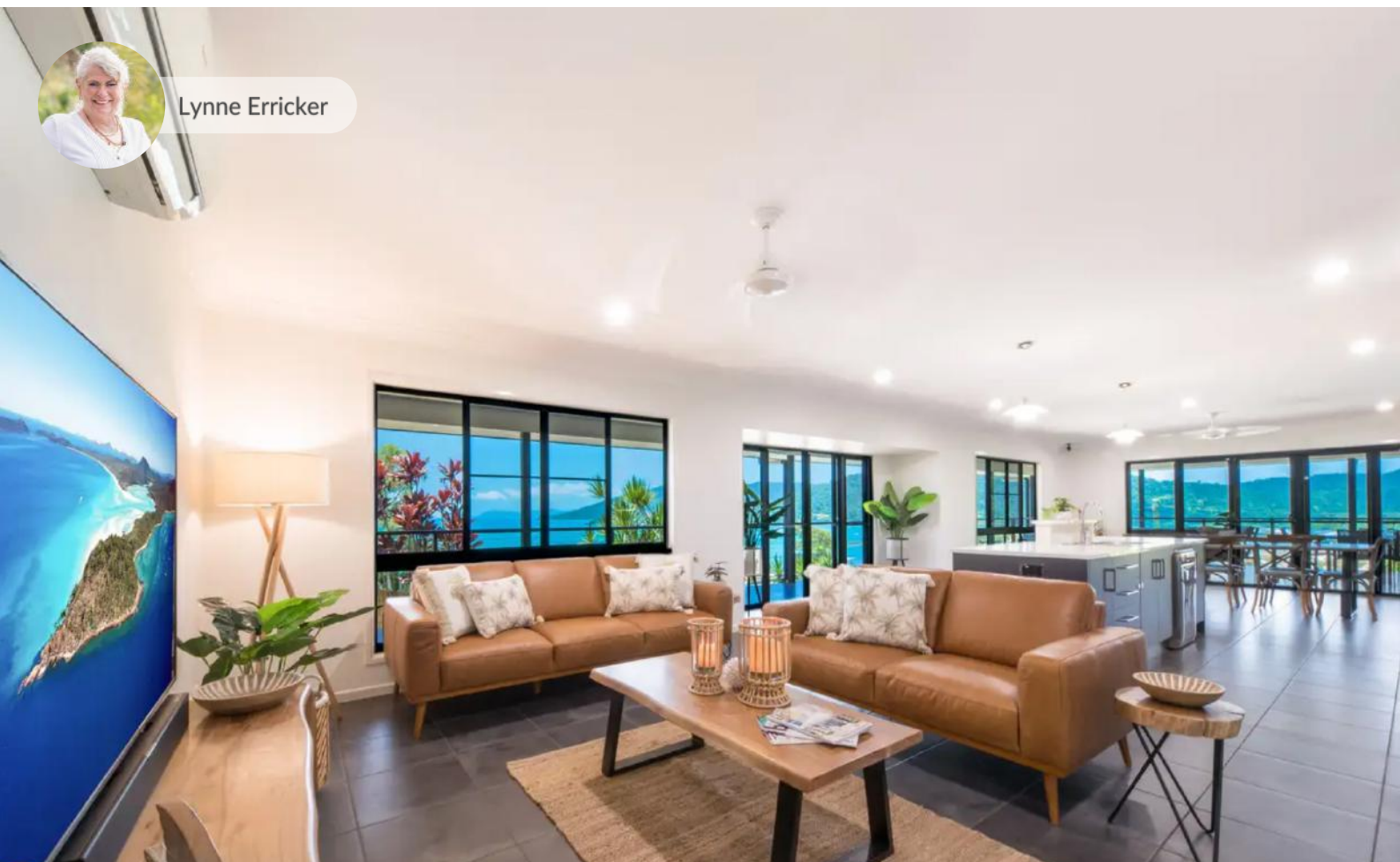
Clarice Davis



21-23 Acacia Grove,  
*Woodzark*



Lynne Erricker



4 Simmons Street,  
*Airlie Beach*



Stephanie McWhirter



Clarice Davis



47 Pepperberry Lane,  
*Airlie Beach*



Stephanie McWhirter



28/144 Shingley Drive,  
*Airlie Beach*



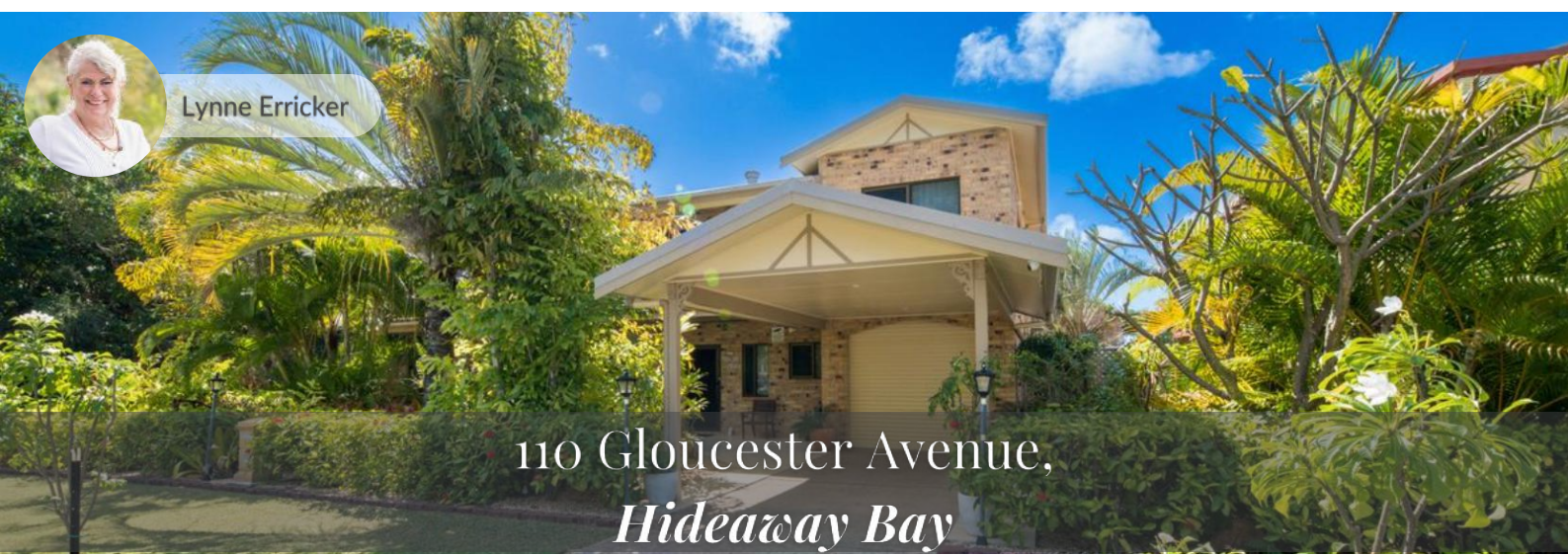
Fiona Donnellan



24 Whitehaven Crescent,  
*Cannonvale*



Lynne Erricker



110 Gloucester Avenue,  
*Hideaway Bay*



Andrea Clarke

16/14 Hamilton Avenue,  
*Cannonvale*



Adam Webster

17/144 Shingley Drive,  
*Airlie Beach*



Fiona Donnellan

37 Airlie Crescent,  
*Airlie Beach*



Stephanie McWhirter

2 Armada Crescent,  
*Jubilee Pocket*



Andrea Clarke

13/144 Shingley Drive,  
*Airlie Beach*



Stephanie McWhirter

36 Macarthur Drive,  
*Cannonvale*



Stephanie McWhirter

201/33 Port Drive,  
*Airlie Beach*



Stephanie McWhirter

211/33 Port Drive,  
*Airlie Beach*



Adam Webster

58 Pringle Road,  
*Woodwark*



Adam Webster

144 Camille Drive,  
*Strathdickie*



Stephanie McWhirter



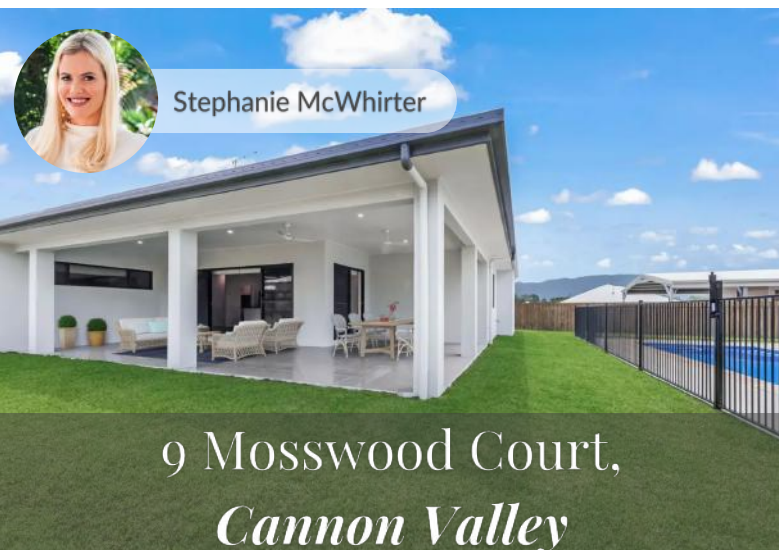
Adam Webster

54 Botanica Drive,  
*Woodwark*



Andrea Clarke

61 Galbraith Park Drive,  
*Cannon Valley*



Stephanie McWhirter

9 Mosswood Court,  
*Cannon Valley*



Stephanie McWhirter

122 Orchid Road,  
*Cannon Valley*



Fiona Donnellan

Lot 65 Gloucester Avenue,  
*Cape Gloucester*



Adam Webster

14 Acacia Grove,  
*Woodwark*



Anita Edgar

36 Beth Court,  
*Cannonvale*



Stephanie McWhirter

2/18 Stonehaven Court,  
*Airlie Beach*



Lynne Erricker

15 Airlie Crescent,  
*Airlie Beach*



Adam Webster

127 Staniland Drive,  
*Strathdickie*



Paul Skinner

2/24 Illawong Street,  
*Cannonvale*



Paul Skinner

11 Stony Creek Close,  
*Cannonvale*



Stephanie McWhirter

6 Johnswood Close,  
*Cannonvale*



Anita Edgar

26 Parkwood Terrace,  
*Cannonvale*

# Ray White Whitsunday

15 sales agents with 165\* years experience in the local real estate market

An experienced agent means the sale of your property is in great hands.

Don't leave the sale of your property to chance!

Contact your preferred sales agent today.



Mark  
Beale  
0404 498 790



Anita  
Edgar  
0418 732 968



Lynne  
Erricker  
0414 641 612



Adam  
Webster  
0401 235 534



Andrea  
Clarke  
0418 796 323



Simon  
Dymmott  
0400 799 788



Paul  
Skinner  
0404 490 079



Stephanie  
McWhirter  
0467 677 225



Fiona  
Donnellan  
0432 647 708



Sue  
Shaw  
0438 755 725



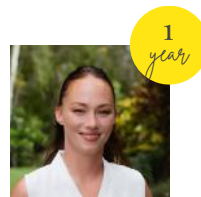
Brett  
Dwyer  
0447 583 759



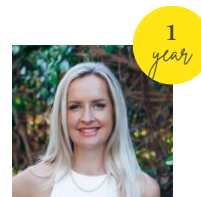
Jeremiah  
Roberts  
0487 856 617



Nichole  
Towers  
0455 512 654



Jade  
McLeod  
0435 833 582



Clarice  
Davis  
0429 336 449



# Ray White Marine Sunreef Yachts

Ultra-eco-friendly catamarans may soon be cruising the waters of Australia after one of the country's biggest yacht brokerages, Ray White Marine, agreed to distribute Polish-made Sunreef Yachts in the sunburnt country.

Ray White Marine Sales Director Brock Rodwell said he was very excited by the appointment, citing Sunreef Yachts' industry-leading technology and aesthetic appeal.



**Leo Rodriguez**

0415 776 633

leo.rodriguez@raywhite.com

Sunreef recently celebrated its 20th anniversary at the prestigious Monaco Yacht Show in September where the partnership between the popular eco-friendly yacht builders and Ray White Marine was formed.

Ray White Marine said the two powerhouse brands are looking to produce strong sales in the Asia-Pacific region with many active leads already in the pipeline here in Australia.

Founder and CEO Francis Lapp started the company in the early 2000s after owning a catamaran charter company in his home country of France. Sunreef has quickly become the world's premiere eco-conscious luxury yacht manufacturer and built over 350 yachts in its 20 years of operation.

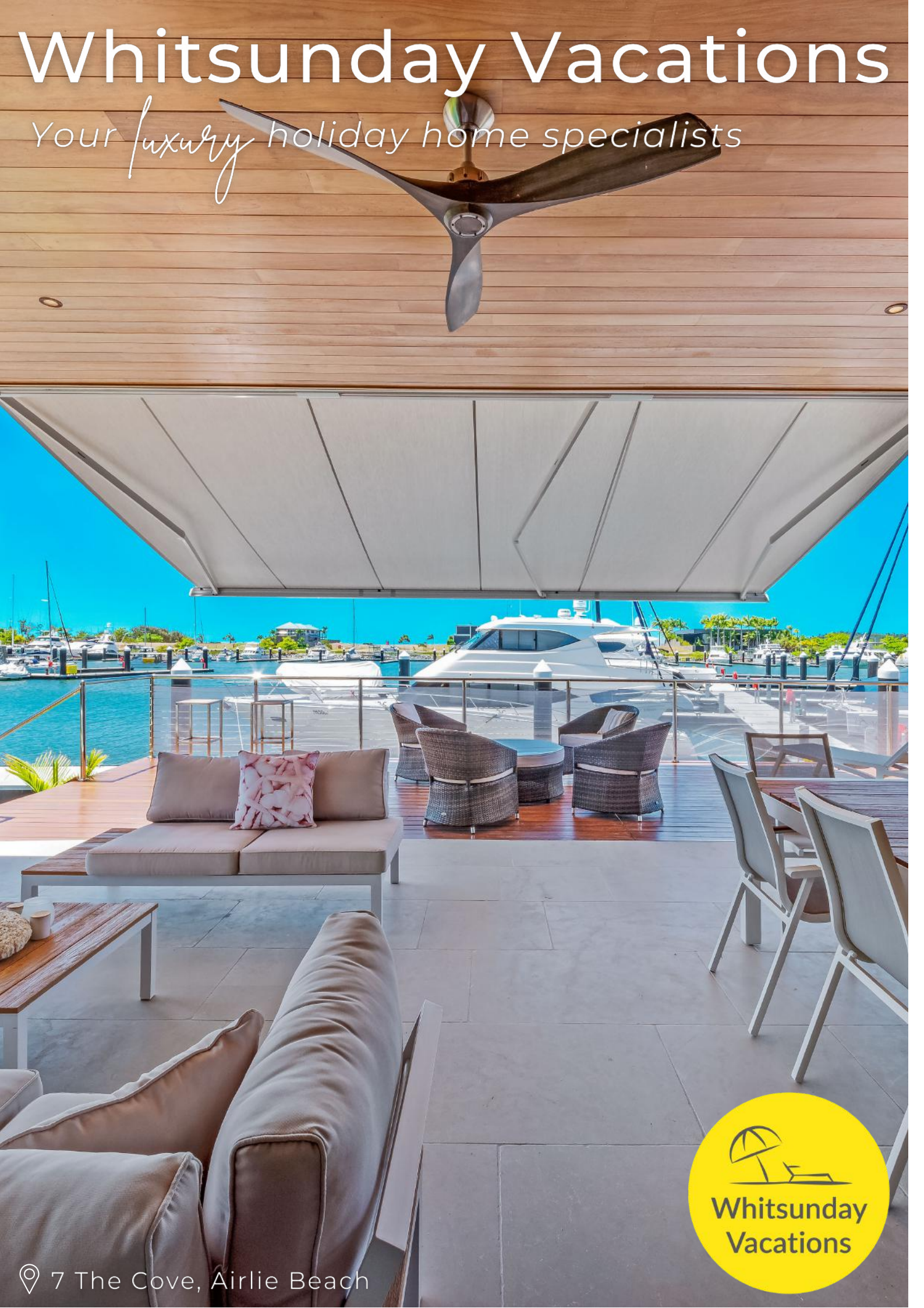
On expanding into the Asia-Pacific region, Lapp described Ray White Marine as a reliable and professional partner and noted that Australia offers a perfect cruising arena for Sunreef's catamarans.





# Whitsunday Vacations

*Your luxury holiday home specialists*



📍 7 The Cove, Airlie Beach



Mandalay House



High Tide,  
Cannonvale



18 The Cove,  
Airlie Beach



Hillcrest By The Beach,  
Airlie Beach



Paradise Cove



Mandalay Aqua



Keep an eye on  
[whitsundayvacations.com.au](http://whitsundayvacations.com.au)  
for exclusive monthly  
specials & discounts!

Book your *Whitsunday escape* today...



0482 797 767



[whitsundayvacations.com.au](http://whitsundayvacations.com.au)



[whitsundayvacations@raywhite.com](mailto:whitsundayvacations@raywhite.com)



Whitsunday Vacations



@whitsundayvacations

# Thinking about selling?



Mark  
Beale  
0404 498 790



Adam  
Webster  
0401 235 534



Andrea  
Clarke  
0418 796 323



Anita  
Edgar  
0418 732 968



Brett  
Dwyer  
0447 583 759



Clarice  
Davis  
0429 336 449



Fiona  
Donnellan  
0432 647 708



Jade  
McLeod  
0435 833 582



Jeremiah  
Roberts  
0487 856 617



Nichole  
Towers  
0455 512 654



Lynne  
Erricker  
0414 641 612



Paul  
Skinner  
0404 490 079



Simon  
Dymmott  
0400 799 788



Stephanie  
McWhirter  
0467 677 225



Sue  
Shaw  
0438 755 725

Contact one of our friendly sales agents for a confidential discussion about your property.