

44th Annual



Concrete Paving Workshop

January 23 - 24, 2024
Cornhusker Marriott Hotel
Lincoln, Nebraska



AGENDA

Tuesday, January 23, 2024		Moderator: Bruce Grupe (NCPA)	Grand Ballroom
7:00 am to 5:00 pm	REGISTRATION OPEN ALL DAY		
9:00 am to 9:10 am	Welcome	Bruce Grupe, P.E. (<i>NCPA Executive Director</i>)	
9:10 am to 9:40 am	5-Minute Presentations	Exhibitors & Members - 5 Minute Presentations	
9:40 am to 10:00 am	State of the State	Vicki Kramer (<i>Director, NDOT</i>)	
10:00 am to 10:30 am	BREAK		
10:30 am to 11:00 am	Update on FHWA Activities/Programs	Wayne Fedora (<i>Nebraska Division Administrator, FHWA</i>)	
11:00 am to 11:30 am	NDOT Airport Activities/Updates	Jeremy Borrell (<i>Airport Division Manager, NDOT</i>) Anna Lannin (<i>Airport Division, NDOT</i>)	
11:30 am to 12:00 pm	Carbon Footprint EPDs	Matt Lemay (<i>NRMCA</i>)	
12:00 pm to 1:30 pm	PAVING AWARDS CEREMONY & LUNCH		
1:30 pm to 2:00 pm	BREAK		
2:00 pm to 3:30 pm	BREAKOUT SESSIONS		
3:30 pm to 4:00 pm	BREAK		
4:00 pm to 4:20 pm	NDOT Program	Mick Syslo (<i>Roadway Design Manager, NDOT</i>)	
4:20 pm to 5:10 pm	History of Slipform Paving	Bryan Fox (<i>Koss Construction</i>)	
5:10 pm	RECEPTION		
Wednesday, January 24, 2024		Moderator: Bruce Grupe (NCPA)	Grand Ballroom
6:30 am to 8:00 am	BREAKFAST	Grand Ballroom ABC	
8:00 am to 8:30 am	E-Ticketing	Andy Dearmont (<i>Asst. Construction Engineer, NDOT</i>) Brandon Hundley (<i>HaulHub</i>)	
8:30 am to 9:00 am	Update on Bridge Deck Mix Designs	Dr. Jiong Hu (<i>UNL</i>)	
9:00 am to 9:30 am	BREAK (NCPA Annual Members Meeting)		Boca Raton Room
9:30 am to 10:00 am	Buy America Update	Mark Fischer (<i>Assistant Materials Eng., NDOT</i>) Kellie Troxel (<i>Assistant Construction Eng., NDOT</i>)	
10:00 am to 10:20 am	Civil Rights Program Topics	Kimberly Baker (<i>NDOT</i>)	
10:20 am to 10:50 am	Highway 30 Project (Fiberglass Reinforcement)	Craig Hughes (<i>Cedar Valley</i>)	
10:50 am to 11:30 am	Updates for Trucking in Nebraska	Kent Grisham (<i>Nebraska Trucking Association</i>)	
11:30 am	Door Prize Drawing		
<p style="color: green;">Important Note for NDOT Employees: On-site registration NOT allowed without prior approval from Moe Jamshidi or Khalil Jaber</p>			

Total Workshop Credits of 8.0 PDH Available!

Be sure to retain the PDF forms inside this booklet

BREAKOUTS

Offered First Day at the Times Listed Below:

	SESSION 1 Grand Ballroom DEF Moderator: Bruce Grupe (NCPA)	SESSION 2 Grand Ballroom ABC Moderator: Andy Dearmont (NDOT)	SESSION 3 Arbor I/II Moderator: Mark Deetz (Lyman Richey)
2:00 to 2:30 pm	Ethics for Engineers Todd W. Weideman (Woods/Aitken Law Firm)	Denver Airport White Topping Don Clem (NRMCA)	Alternative Cementitious Materials - Research Dr. Jiong Hu (UNL)
2:00 to 3:00 pm		White Topping Design Manual Don Clem (NRMCA)	Mobile Mapping Andrew Pokorny, LSIT (RW Engineering)
3:00 to 3:30 pm	Omaha Metro-Area Paving Committee Update Bruce Grupe (NCPA)	Creative Project Financing Suzan Brodine (Olsson)	Low Carbon Perf Specs Mathew Lemay (NRMCA)
3:30 to 4:00 pm	BREAK		
4:00 to 5:00 pm	General Session	General Session	General Session

CONFERENCE MAP



BOARD of DIRECTORS

Eric Anderson

Kurt Peyton

Bill Ringsdorf

Jed Paulsen

Steve Wobken

PLANNING COMMITTEE

Andy Dearmont

Wally Heyen

Eric Klein

Tyson Vogt

Kelly Naslund

Mike Willman

Jason Easter

Mark Deetz

Jim Witt

Tom Ourada

Chad Price

Jonny Alexander

Joel Sedlacek

Ben Ricceri

Tyler Jensen

Randy Pierce

Dr. Jiong Hu

Bryan Fox

Curt Mueting

Bill Wehling

SPEAKERS' CONTACT INFORMATION

Name	Organization	Phone	Email
Bruce Grupe	NCPA	402.499.7105	bgrupe@nebrconc.org
Vicki Kramer	Nebr. DOT	402.479.4671	vicki.kramer@nebraska.gov
Wayne Fedora	Nebr. Div., FHWA	402.742.8462	R.wayne.Fedora@dot.gov
Jeremy Borrell	Nebr. DOT-Aeronautics Division	402.471.7922	Jeremy.Borrell@nebraska.gov
Anna Lannin	Nebr. DOT-Aeronautics Division	402.471.7922	anna.lannin@nebraska.gov
Mathew Lemay	NRMCA	847.323.0413	mlemay@nrmca.org
Mick Syslo	NDOT - Roadway Design	402.479.4601	mick.syslo@nebraska.gov
Mark Fischer	NDOT - Materials	402.479.3163	Mark.Fischer@nebraska.gov
Kellie Troxel	NDOT - Construction	402.219.1192	kellie.troxel@nebraska.gov
Amy Starr	NDOT - Programs	402.479-3687	amy.starr@nebraska.gov
Todd Weidemannont	Woods/Aitken Law Firm	402.898.7454	tweidemann@woodsaitken.com
Don Clem	NRMCA (Paving)	303.881.5009	dclm@NRMCA.org
Suzan Brodine	Olsson		sbrodine@olsson.com
Andy Dearmont	Nebr. DOT	402.479.4451	andy.dearmont@nebraska.gov
Dr.Jiong Hu	UNL	402.554.4106	jhu5@unl.edu
Andrew Pokorny, LSIT	RW Engineering	402.658.2216	www.RWmidwest.com
Bryan Fox	Koss Construction	785.228.2928	bcf@kossconstruction.com
Craig Hughes	Cedar Valley	319.290.5617	craigh@cedarvalleycorp.com
Kent Grisham	Nebraska Trucking Association	402.650.3859	kent@nebtrucking.com

EXHIBITORS

Logan Contractors Supply

Murphy Tractor & Equipment Co.

RW Engineering & Surveying

Shaffer Communications, Inc.

Midstates Equipment and Supply

Olsson

American Council of Engineering Companies

SPONSORS

Gold Eagle Sponsors

Ash Grove Cement
Central Plains Cement
GCC of America
Constructors, Inc.
GOMACO
Logan Contractors
Lyman Richey
Martin Marietta
MidStates Engineering
NEBCO
WW Clyde

Sponsors

E & A Consulting Group, Inc.
Euclid Chemical
GCP Applied Technologies
JEO
JINCO, LLC
Koss Construction
Murphy Tractor
Olsson Associates
Paulsen, Inc.
RW Engineering
TAB Construction
The Schemmer Associates

Special Sponsors

Nebraska Department of Transportation
FHWA - Nebraska Division
Nebraska Chapter ACI
Nebraska Concrete & Aggregates Association

Sponsor Ads



With Over 100 Years of Experience...

Koss Construction Company is a leading heavy highway contractor equipped and staffed to deliver virtually every surfacing product being designed today for streets, highways, industrial sites and airfields.



1800 NW Brickyard Road
Topeka, Kansas 66618
www.kossconstruction.com



Tel: 785-228-2928
Fax: 785-228-2927

TOUGH PROJECTS. INNOVATIVE SOLUTIONS.



**A FOUNDATION OF BUILDING BETTER COMMUNITIES
AND SOLVING PROBLEMS FOR THE FUTURE**



**CONCRETE PAVING
UTILITY & DRAINAGE
EARTHWORK
ALTERNATIVE DELIVERY**

EaglePave[®] IT Blended Cement

EaglePave IT is a blend of Ground Granulated Blast Furnace Slag (GGBFS) & Portland-limestone cement that is suitable for use in virtually all concrete and concrete product applications.

EaglePave IT is available in various blend proportions to meet project needs & complies with all ASTM C595/AASHTO M240 specifications for Ternary blended cement IT(AX)(BY)

Improved Strength EaglePave IT surpasses the strength of Portland mixes at 28 days and beyond.

Improved Workability Concrete produced with EaglePave IT improves the workability and finishability of the concrete

Reduced Permeability EaglePave IT lowers the permeability of concrete; therefore, increasing the durability of the concrete.

Reduced Alkali-Silica Reactivity (ASR) EaglePave IT improves the resistance to ASR attack by decreasing concrete's permeability and preventing the migration of alkalis to reactive aggregates. Confirmation testing should be performed on a specific project basis.

Improved Night Visibility & Increased Albedo EaglePave IT's lighter color improves night visibility. It also reflects light, resulting in cooler surrounding temperatures, helping to reduce the urban heat island effect.

State Approvals

EaglePave IT can be found on the Qualified Products List for the following states: Nebraska DOT, Iowa DOT, Missouri DOT, and Kansas DOT.

Environmentally Friendly Alternative EaglePave IT contains slag cement which defined by the USGBC is a pre-consumer recycled material. EaglePave IT also contains inter-ground limestone. Therefore, the overall CO2 footprint of a mix using EaglePave IT is reduced compared to a mix using straight Portland cement, because of the increased cement/clinker ratio and the overall recycled material content.

Additional Properties of Hardened Concrete

Drying Shrinkage: The use of EaglePave IT generally has no adverse effect on drying shrinkage.

Resistance to Sulfate Attack: Concrete mixes using EaglePave IT improve the concrete's resistance to sulfate attack when compared to straight Portland mixes.





Transportation

that moves communities forward.

At JEO, transportation is all encompassing. Let us help guide you through your next project.



jeo.com

Architecture | Engineering | Surveying | Planning

**Let's
talk.**

Call us at
800.723.8567.



NEBRASKA'S GOMACO DISTRIBUTORSHIP



JINCO

JINCOUSA.com
402-560-1300



Martin
Marietta

It's not just **what** we make;
it's what we make **possible.**[®]

Midwest Division
(515) 254-0030

Throughout Nebraska
and across the Midwest.

Building the world around you.

NYSE:MLM

www.martinmarietta.com



Ash Grove Cement Company

American made and American owned since 1882

Contact our Omaha sales office: 402.334.1401

www.ashgrove.com



600 S. Cherry St., Ste. 1000
Glendale CO 80246
303-739-5900 Phone
303-739-5940 Fax
www.gccusa.com



GCC Philosophy:

Mission: To be the supplier of choice in cement, concrete and innovative solutions.

Vision: Our customers recognize us as a business partner that generates the most value to their construction projects. We're a sustainable growing company, a great place to work and a solid investment for our shareholders.



BUILDING NEBRASKA SINCE 1908



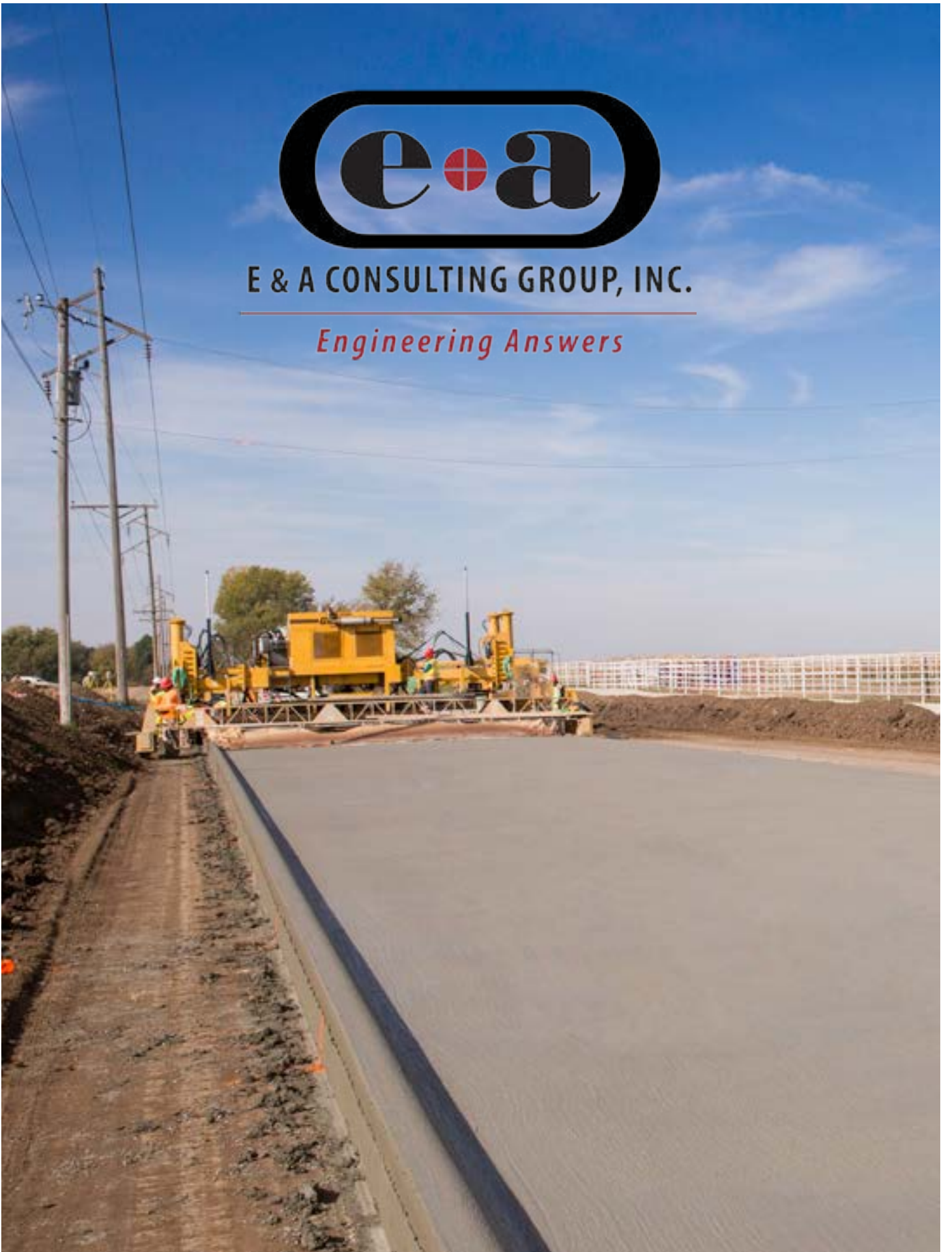
Constructors

constructorslincoln.com



E & A CONSULTING GROUP, INC.

Engineering Answers



olsson.com

Most see a wider road.
We see family reunions.

ENGINEERING POSSIBILITIES.

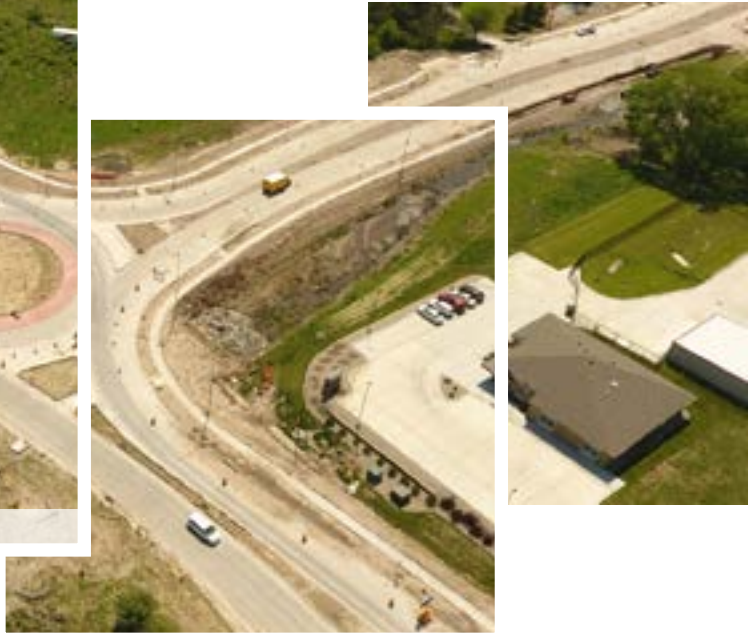


olsson®

KEEPING COMMUNITIES *In Motion*



Pine Lake Road, 61st Street to Highway 2 | Lincoln, NE



Highway, Roadway,
City Street & Country
Road Design



Bridge Design
& Inspections



Traffic Analysis
& Studies



Hydraulic & Hydrologic
Analysis



Bicycle & Trail Master
Planning



Public Involvement

SCH~~EM~~MER

Design with Purpose. Build with Confidence.

888.877.8127 | SCHEMMER.COM

MS MID-STATE ENGINEERING & TESTING

GEOTECHNICAL - CONSTRUCTION MATERIALS TESTING

Established in 1995 Mid-State Engineering & Testing, Inc. with offices in Kearney, Columbus and Norfolk, Nebraska specializes in geotechnical design and consulting, special inspections and materials testing services. Mid-State Engineering & Testing, Inc. materials laboratories are accredited by the American Association of State Highway Transportation Officials (AASHTO) Materials Reference Laboratory (AMRL) and the Concrete and Cement Reference Laboratory (CCRL) and Corp of Engineers. Mid-State Engineering & Testing, Inc. can assist in all your geotechnical needs all across Nebraska, Iowa, South Dakota and Kansas.



GEOTECHNICAL ENGINEERING AND DESIGN

Our clients trust Mid-State Engineering and Testing, Inc. for geotechnical engineering services for virtually any project. Our team of skilled geotechnical professionals conduct geotechnical studies to understand the site geology, soil mechanics, hydraulics and strength of materials of site specific soils as they apply to our client's needs. Our experience in geotechnical engineering assures the most cost-effective yet reliable and sustainable solution. Our geotechnical services include:

- ✓ Drilling and Subsurface Exploration
- ✓ Foundation Design (Shallow, Intermediate and Deep)
- ✓ Floor Slab and Pavement Design
- ✓ Bearing Capacity Analysis
- ✓ Slope Stability Analysis
- ✓ Seismic Analysis

DRILLING - GEOTECHNICAL AND ENVIRONMENTAL

Mid-State Engineering & Testing, Inc. is dedicated to providing our clients the best geotechnical borings, sampling and logging in the industry. Quality samples in a timely manner is paramount to our success. Our experienced drilling team and upgraded equipment is ready to serve you and your needs throughout the Midwest. With two (2) Mobil Auger Rigs available to utilize, we are ready to tackle all your subsurface needs.

- ✓ Geotechnical Subsurface Exploration
- ✓ Contract Drilling across the Midwest
- ✓ Monitor Well Installation and Development
- ✓ Well Rehabilitation and Abandonment
- ✓ Exploratory Borings and Continues Sampling
- ✓ Phase I Site Assessments

2106 E. Highway 30 Suite 1
Kearney, NE 68847
Office: **308-237-0187**

402 31st Avenue
Columbus, NE 68601
Office: **402-562-7824**

1106 Benjamin Ave; Ste 1100
Norfolk, NE 68701
Office: **402-379-2377**

www.midstateengineering.com

Conference Evaluation & Industry Survey

EVALUATION

Nebraska Concrete Paving Conference
January 23-24, 2024 Cornhusker Marriott Hotel Lincoln,
NE

ATTENDEES: On a scale of 1 to 5 with 5 being the best, please indicate / rank the following:

1. OVERALL EVENT

Rating of conference as a whole

1 2 3 4 5

Length of conference

1 2 3 4 5

Conference facilities

1 2 3 4 5

Overnight accommodations

1 2 3 4 5

Quality, Quantity and Selection of refreshments

1 2 3 4 5

Quality of meals

1 2 3 4 5

CONTENT

Relevance of topics

1 2 3 4 5

Knowledge of speakers

1 2 3 4 5

Presentation skills of speakers

1 2 3 4 5

Length of individual sessions

1 2 3 4 5

Number and frequency of breaks

1 2 3 4 5

TEAR HERE

Continued -->

EVALUATION

SESSIONS YOU ATTENDED

Exhibitor's presentations

1 2 3 4 5
 Poor Excellent

Vicki Kramer: State of the State

1 2 3 4 5
 Poor Excellent

Wayne Fedora: Update on FHWA Activities & Programs

1 2 3 4 5
 Poor Excellent

Jeremy Borrell/Anna Lannan: NDOT Airport Activities & Updates

1 2 3 4 5
 Poor Excellent

Mathew Lemay: Carbon Footprint EPDs

1 2 3 4 5
 Poor Excellent

Mick Syslo: NDOT Program

1 2 3 4 5
 Poor Excellent

Bryan Fox: History of Slipform Paving

1 2 3 4 5
 Poor Excellent

Todd Weidemann: Ethics for Engineers

1 2 3 4 5
 Poor Excellent

Bruce Grupe: Omaha Metro Area Paving Committee Update

1 2 3 4 5
 Poor Excellent

Don Clem: Denver Airport White Topping

1 2 3 4 5
 Poor Excellent

Don Clem: White Topping Design Manual

1 2 3 4 5
 Poor Excellent

Suzan Brodine: Creative Project Financing

1 2 3 4 5
 Poor Excellent

EVALUATION

Dr. Jiong Hu: Alternative Cementitious Materials - Research

_____ 1 _____ 2 _____ 3 _____ 4 _____ 5
 Poor _____ Excellent

Andrew Pokorny: Mobile Mapping

_____ 1 _____ 2 _____ 3 _____ 4 _____ 5
 Poor _____ Excellent

Mathew Lemay: Low Carbon Perf Specs

_____ 1 _____ 2 _____ 3 _____ 4 _____ 5
 Poor _____ Excellent

Andy Dearthmont: E-Ticketing

_____ 1 _____ 2 _____ 3 _____ 4 _____ 5
 Poor _____ Excellent

Dr. Jiong Hu: Update on Bridge Deck Mix Designs

_____ 1 _____ 2 _____ 3 _____ 4 _____ 5
 Poor _____ Excellent

Mark Fischer & Kellie Troxel: Deck Mix Designs

_____ 1 _____ 2 _____ 3 _____ 4 _____ 5
 Poor _____ Excellent

Kimberly Baker: Civil Rights Program Topics

_____ 1 _____ 2 _____ 3 _____ 4 _____ 5
 Poor _____ Excellent

Craig Hughes: Highway 30 Project (Fiberglass Reinforcement)

_____ 1 _____ 2 _____ 3 _____ 4 _____ 5
 Poor _____

Kent Grisham: Updates for Trucking in Nebraska

_____ 1 _____ 2 _____ 3 _____ 4 _____ 5
 Poor _____ Excellent

2. How many external conferences/seminars do you attend, on average, in a year?

_____ 1-5 _____ 6-10 _____ over 10 _____

3. How did you learn of the Concrete Paving Conference?

- NCPA e-blast
- NCPA Registration form
- ACI Newsletter
- NACO Website
- Internet/Website
- Colleague/Friend
- Other (Please explain) _____

TEAR HERE

Continued -->

EVALUATION

4. Please specify your main reason for attending this conference

- Content
- Speakers
- Networking
- Personal growth/development
- PDHs
- Other – explain _____

5. Did the conference fulfill your reason for attending?

- Yes, absolutely Yes, but not to the full extent possible No

6. Would you like to see this conference continue in the near future?

- Yes, absolutely
No – explain

7. What changes/improvements would you like to see made in future conferences?

- _____
- _____
- _____

8. Suggest any topics you would like to see covered in next year's sessions:

- _____
- _____
- _____

9. List any other suggestions/comments you have:

- _____
- _____
- _____

Thank you for your time in completing this evaluation. - **Bruce**

SURVEY



In an attempt to better serve our industry, the NCPA would like to hear your opinion on how we can better improve our association. Please help us out by taking the following survey:

1. Would you like to see more of a social media presence?

Yes ____ No _____

If so, which platforms? (check all that apply)

Facebook _____ Twitter _____ LinkedIn _____

Other: _____

2. Would you like to see more training opportunities?

Large Group _____ Small group _____

If yes, what topics would you like to see:

Continued -->

TEAR HERE

SURVEY

3. Would you like to see more publications from the NCPA Office?

Yes ____ No _____

4. How can the NCPA Staff's time be better utilized to help your firm succeed?

Thank You for Your Time

This page was left intentionally blank.

PDH Forms

This page was left intentionally blank.

PDH Form

Superintendents

TEAR HERE

<u>NCPA Concrete Paving Workshop PDH CERTIFICATION for Superintendents</u>			
Workshop dates: January 23-24, 2024 At the Cornhusker Marriott, Lincoln, Ne.	START	MINUTES	MINUTES
TOPIC/DESCRIPTION	<u>TIME</u>	<u>TALK</u>	<u>ATTENDED</u>
FIRST DAY'S PROGRAM			
Welcome/Introductions/housekeeping: Bruce Grupe	9:00	10	
Exhibitor Presentations	9:10	30	
Vicki Kramer, NDOT: State of the State	9:40	20	
Wayne Fedora, FHWA: Update on FHWA Activities and Programs	10:30	30	
Jeremy Borrell, Ne. Dept. of Aeronautics: Upcoming Airport Projects in 2023	11:00	30	
Mathew Lemay - NRMCA: Carbon Foot print EPD's	11:30	30	
Mick Syslo - NDOT: Future Projects Update	4:00	20	
Bryan Fox - History of Slipform Paving	4:20	45	
Lunch and Awards Banquet	Noon		
Afternoon Breakout sessions 1,2,& 3	see below		
SECOND DAY'S PROGRAM			
Andy Dearmont & Panel, E-Ticketing	8:00	30	
Dr. Hu - UNL: Update on Bridge Deck Mix Designs	8:30	30	
Mark Fischer & Kellie Troxel: Buy America Update	9:30	30	
Kimberly Baker: Civil Rights Program Topics	10:00	20	
Craig Hughes - Cedar Valley Const: Highway 30 Project (Fiberglass Reinforcement)	10:20	30	
Kent Grisham, Nebraska Trucking Assoc: Updates for trucking in Nebraska	10:50	40	
End of the Workshop			
	Noon		
DETAILS OF AFTERNOON BREAKOUT SESSIONS			
<u>Breakout Session 1</u>			
Todd Weidemann: Ethics for Engineers	2:00	60	
Panel: Omaha Metro Area Paving Committee Update and NDOT spec update	3:00	30	
<u>Breakout Session 2</u>			
Don Clem: Denver Airport White Topping	2:00	30	
Don Clem: White Topping Manual	2:30	30	
Suzan Brodine: Creative Project Financing	3:00	30	
<u>Breakout Session 3</u>			
Dr. Hu: Alternative Cementitious materials - Research	2:00	30	
Andrew Pokorny: Mobile Mapping	2:30	30	
Mathew Lemay - NRMCA: Low Carbon Perf. Spec's	3:00	30	
	Minutes >	485	
	Hours >	8	
	Total Minutes Attended >		
	Total Hours Attended >		

Superintendents PDH Certification

This document is to certify that _____ attended the above program presented by the Nebraska Concrete Paving Association. The Board of Examiners for County Highway and City Street Superintendents approved this workshop for 8 Professional Dev. Hours for Certification as a County Highway or City Street Superintendent.

Bruce Grupe, P.E. Nebraska Concrete Paving Association
 Director of NCPA 5700 Seward Ave, Ste B, Lincoln, Ne. 68507

402.499.7105

This page was left intentionally blank.

PDH Form

Engineers

<u>NCPA Concrete Paving Workshop PDH CERTIFICATION for Engineers</u>			
Workshop dates: January 23-24, 2024 At the Cornhusker Marriott, Lincoln, Ne.	START	MINUTES	MINUTES
TOPIC/DESCRIPTION	TIME	TALK	ATTENDED
FIRST DAY'S PROGRAM			
Welcome/Introductions/housekeeping: Bruce Grupe	9:00	10	
Exhibitor Presentations	9:10	30	
Vicki Kramer, NDOT: State of the State	9:40	20	
Wayne Fedora, FHWA: Update on FHWA Activities and Programs	10:30	30	
Jeremy Borrell, Ne. Dept. of Aeronautics: Upcoming Airport Projects in 2023	11:00	30	
Mathew Lemay - NRMCA: Carbon Foot print EPD's	11:30	30	
Mick Syslo - NDOT: Future Projects Update	4:00	20	
Bryan Fox - History of Slipform Paving	4:20	45	
Lunch and Awards Banquet	Noon		
Afternoon Breakout sessions 1,2,& 3	see below		
SECOND DAY'S PROGRAM			
Andy Dearmont & Panel, E-Ticketing	8:00	30	
Dr. Hu - UNL: Update on Bridge Deck Mix Designs	8:30	30	
Mark Fischer & Kellie Troxel: Buy America Update	9:30	30	
Kimberly Baker: Civil Rights Program Topics	10:00	20	
Craig Hughes - Cedar Valley Const: Highway 30 Project (Fiberglass Reinforcement)	10:20	30	
Kent Grisham, Nebraska Trucking Assoc: Updates for trucking in Nebraska	10:50	40	
End of the Workshop	Noon		
DETAILS OF AFTERNOON BREAKOUT SESSIONS			
Breakout Session 1			
Todd Weidemann: Ethics for Engineers	2:00	60	
Panel: Omaha Metro Area Paving Committee Update and NDOT spec update	3:00	30	
Breakout Session 2			
Don Clem: Denver Airport White Topping	2:00	30	
Don Clem: White Topping Manual	2:30	30	
Suzan Brodine: Creative Project Financing	3:00	30	
Breakout Session 3			
Dr. Hu: Alternative Cementitious materials - Research	2:00	30	
Andrew Pokorny: Mobile Mapping	2:30	30	
Mathew Lemay - NRMCA: Low Carbon Perf. Spec's	3:00	30	
	Minutes >	485	
	Hours >	8	
	Total Minutes Attended >		
	Total Hours Attended >		

Superintendents PDH Certification

This document is to certify that _____ attended the above program presented by the Nebr. Concrete Paving Assoc..

This Workshop is estimated to provide 8 Professional Development Hours, or 0.8 Continuing Education Units. However, the Board of Engineers and Architects has final authority with respect to approval or credit.

Bruce Grupe, P.E. Nebraska Concrete Paving Association
 Director of NCPA 5700 Seward Ave, Ste B, Lincoln, Ne. 68507

402.499.7105

TEAR HERE



Nebraska Concrete Paving Association
5700 Seward Ave., Ste. B.
Lincoln, NE 68507
(402) 499-7105
www.nebrconc.org