

VICTORIA PLACE
WARD VILLAGE
HALE BY HENDERSON

Unit 02

INTERIOR DESIGN LOOKBOOK

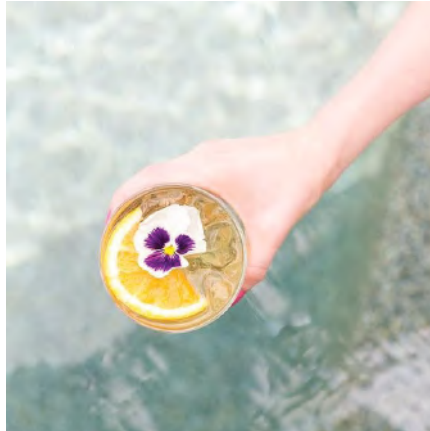




RESORT
LIVING



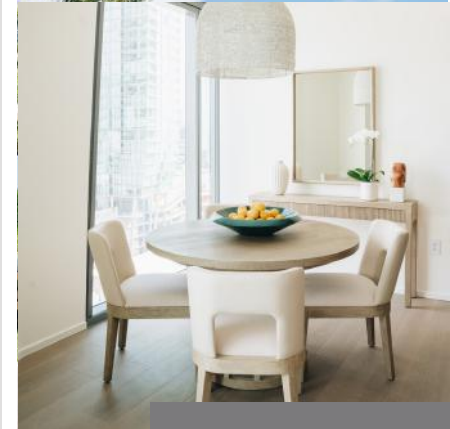
CASUAL
ELEGANCE



BAREFOOT
LUXURY



TIMELESS
AESTHETIC



Henderson Design Group

Our Story

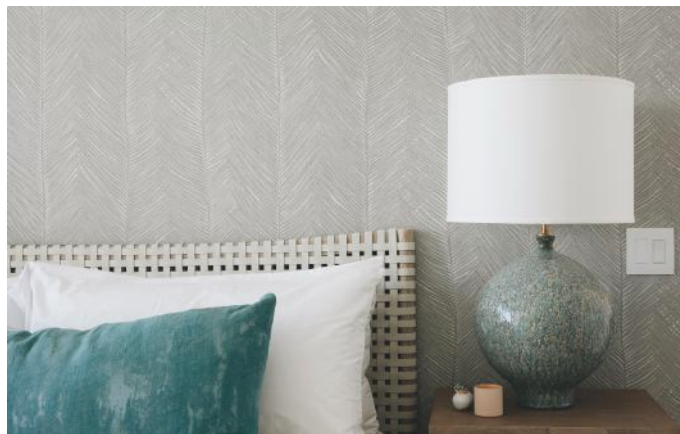


Established by Eric Henderson in 2002, Henderson Design Group has built a reputation for refinement and style, and for respecting the values of clients and enhancing the aesthetics of the homes on which we work.

Over the past 15 years furnishing homes on the islands of Hawaii, Henderson has grown into a team of established, reliable, and experienced designers with offices in Hawaii and San Francisco. We design and furnish homes for a lifestyle and state of mind that is based on comfort, elegance, and warmth.

HALE

BY HENDERSON



Henderson Design Group **Hale Collection & Furniture Packages**



A new furniture offering by Henderson Design Group that redefines the “barefoot luxury” design ethos by making the process of furnishing a home easy, fun, and affordable.

The Hale Collection reflects our approach of furnishing island homes with care and sophistication. Inspired by timeless tropical aesthetic, Eric Henderson and his design team have taken a contemporary approach to the newest collection. Included are unique furniture pieces inspired by architectural elements found at Victoria Place.

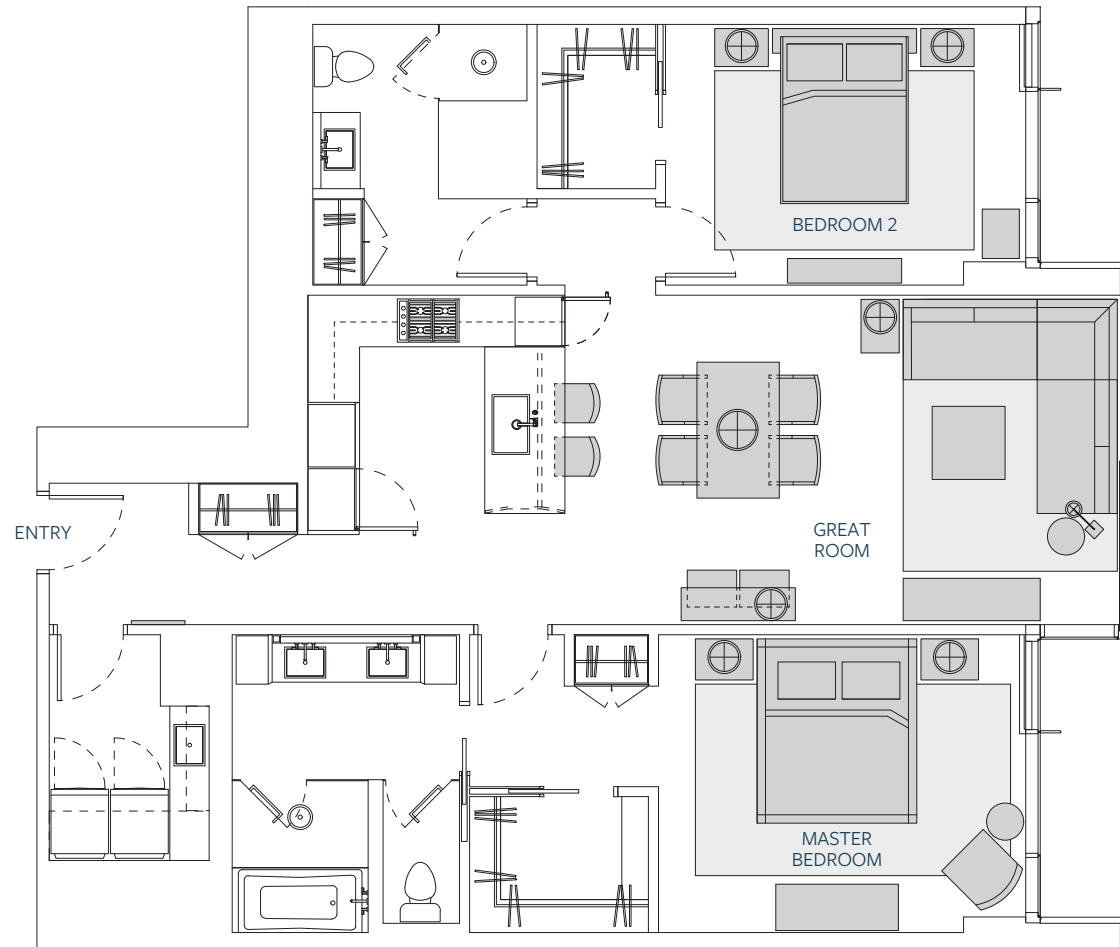
Materials reflecting the natural environment enhance each home’s interiors. Teak, stone, glass, rattan, and smart upholstery designed for an everyday living add character to spaces, while curated elements such as lamps and area rugs help define rooms with elevated comfort.

HALE

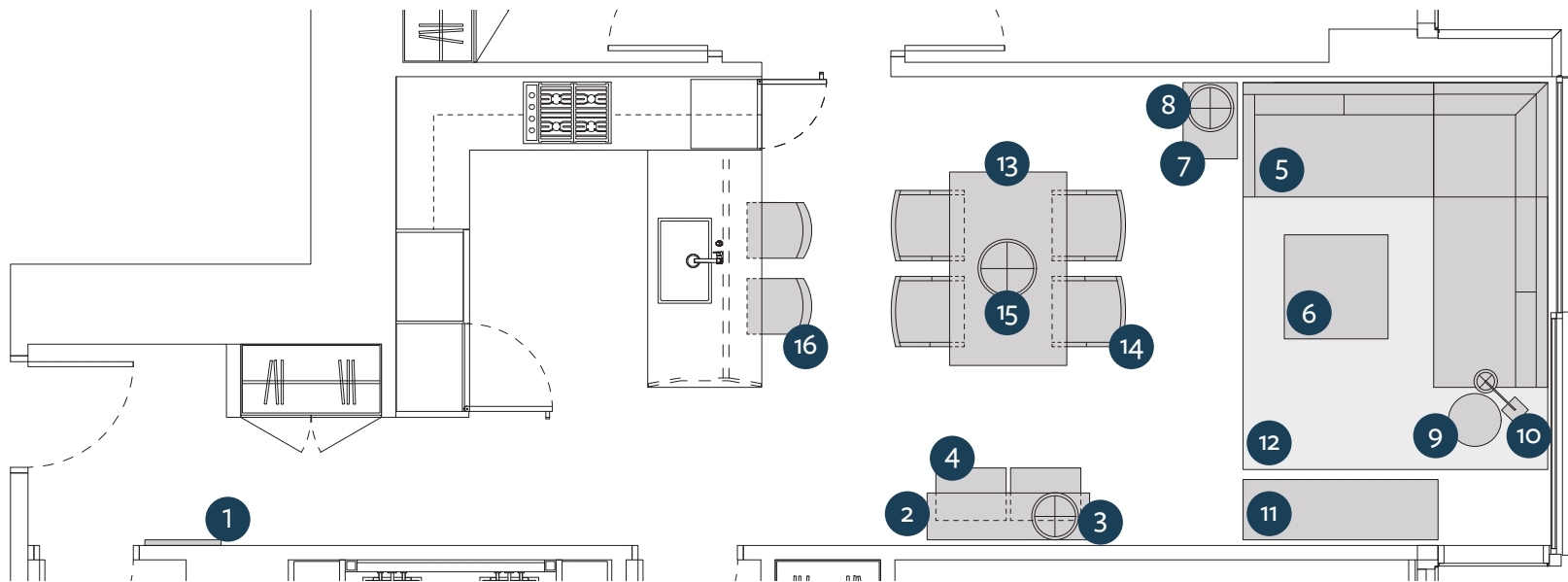
BY HENDERSON



Unit #02
Overall Plan



Unit #02
Entry & Great Room



Furniture Key:

Mirror, Area Rug, Sectional, Coffee Table, Side Table, Table Lamp, Reading Lamp, Drink Table, Media Console, Dining Table, Dining Chairs (4), Chandelier, Counter Stools (2), Console Table, Table Lamp, & Ottomans (2)

Unit #02

Entry & Great Room

Wood Finish Options:



Light



Dark



14 Dining Chairs



13 Dining Table



15 Chandelier



1 Mirror



16 Counter Stools



3 Table Lamp



2 Console Table

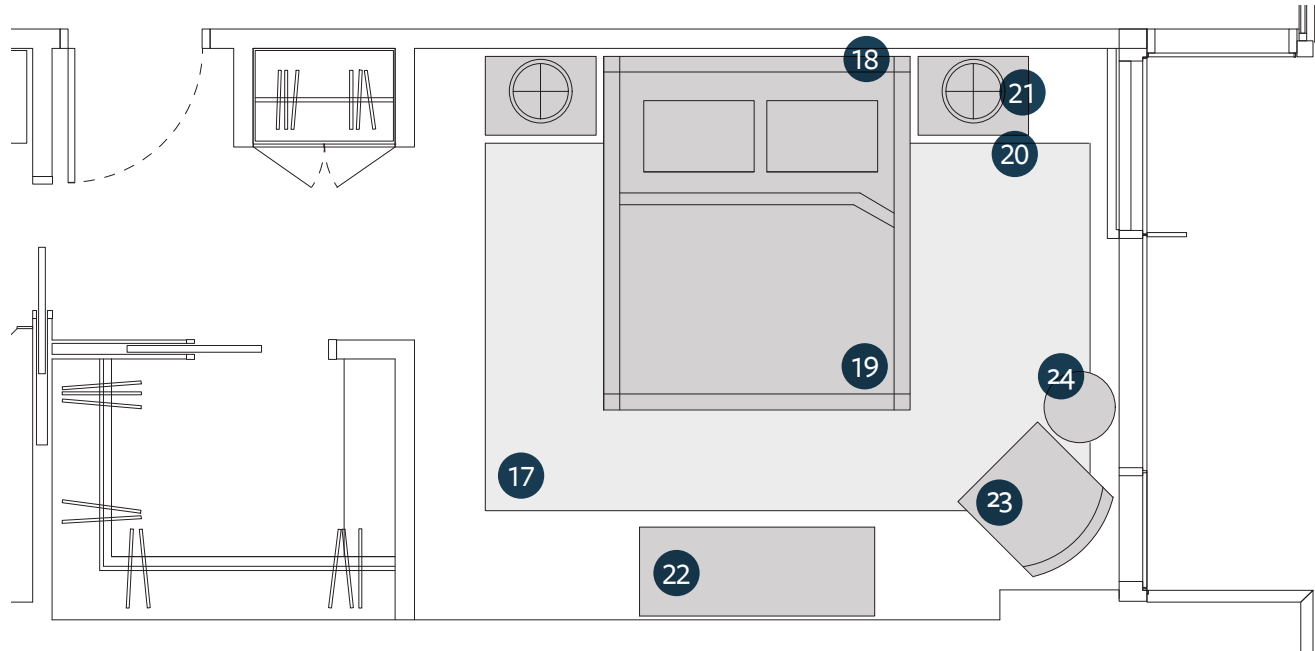
4 Ottoman



11 Media Console



Unit #02
Master Bedroom



Furniture Key:

Area Rug, California King Bedframe, California King Mattress, Nightstands (2),
Table Lamps (2), Dresser, Lounge Chair, Drink Table

Unit #02

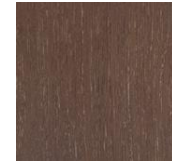
Master Bedroom



Wood Finish Options:



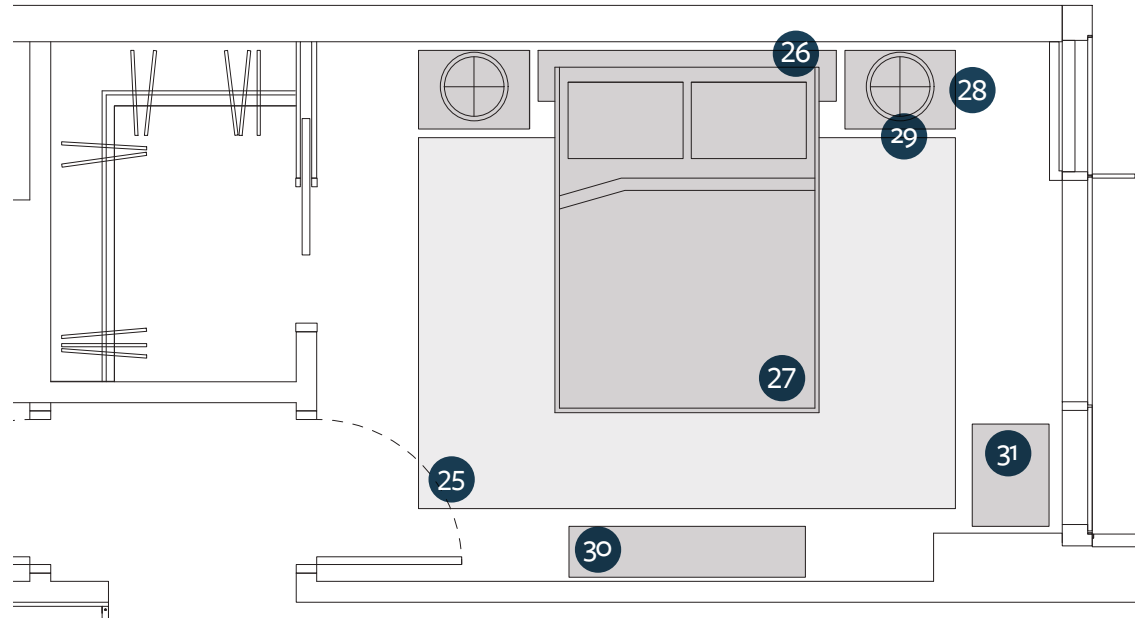
Light



Dark



Unit #02
Bedroom 2



Furniture Key:

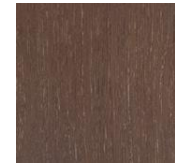
Area Rug, Queen Bedframe, Queen Mattress, Nightstands (2),
Table Lamps (2), Console, & Ottoman

Unit #02
Bedroom 2

Wood Finish Options:



Light



Dark



31
Ottoman



30
Console Table



HENDERSON

DESIGN GROUP

Hale Collection Furniture Package Unit 02 – 2 Bedroom

Foundation Furniture Package Pricing (excluding Add-On Packages): \$87,000*

Add-On Packages Available:

Lighting Package \$8,100

Area Rug Package \$9,000

Mattress Package \$4,800

Bedding Package \$3,000

Decorative Pillow Package \$3,350

Art Package \$8,000

Accessories Package \$2,800

Bathroom Package \$4,000

Total for Add on Packages: \$42,850

Total Price for Unit 02- 2 Bedroom (Foundation + Add-On's): \$129,850*

*Package pricing does not include White Glove Delivery and Installation. Tax not included.

*15% discount to be applied at time of order for any in-stock Hale Collection pieces. 15% discount has not been applied to pricing shown above since quantity of in-stock Hale Collection pieces will vary per project.

*Please note: All furniture and furnishings are unique and may not be available at time of order. Items will be substituted/replaced with a piece of same value and quality at Henderson Design Group's discretion. Package pricing will vary based on final selections/scope. Up to 2 reselections per item. Hourly design time rate to be applied thereafter.



📍 HalebyHenderson
aloha@henderson.house
www.halebyhenderson.com
808.315.8782



MAHALO

HALE
BY HENDERSON

WHAT CAN WE DO FOR YOU?

www.halebyhenderson.com

aloha@henderson.house

808.315.8782