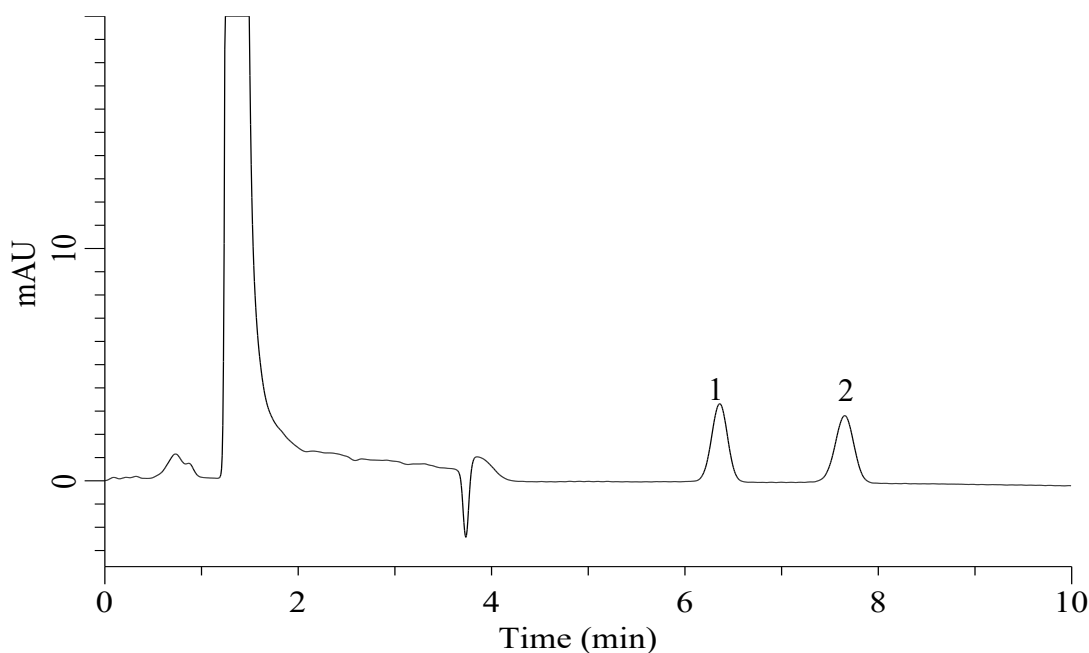


# InertSearch for LC

Inertsil Applications

## Analysis of L-Ascorbic acid and Erythorbic acid

Data No. LB869-1032



### Conditions

**System** : Chromaster HPLC system (HITACHI)  
**Column** : InertSustain Amide (GL Sciences Inc.)  
(5  $\mu$  m, 250 x 4.6 mm I.D.)  
**Column Cat. No.** : 5020-88632  
**Eluent** : A) CH<sub>3</sub>CN  
B) 0.1% H<sub>3</sub>PO<sub>4</sub> in H<sub>2</sub>O  
A/B = 90/10, v/v  
**Flow Rate** : 1.0 mL/min  
**Col. Temp.** : 40 °C  
**Detection** : UV 270 nm  
**Injection Vol.** : 5  $\mu$  L  
**Sample** : Standard

### Analyte:

1. Erythorbic acid 20  $\mu$  g/mL  
2. L-Ascorbic acid 20  $\mu$  g/mL