

CASE STUDY



HCTCVC



PolyAPI



Darko Vukovic

CEO and Founder of PolyAPI

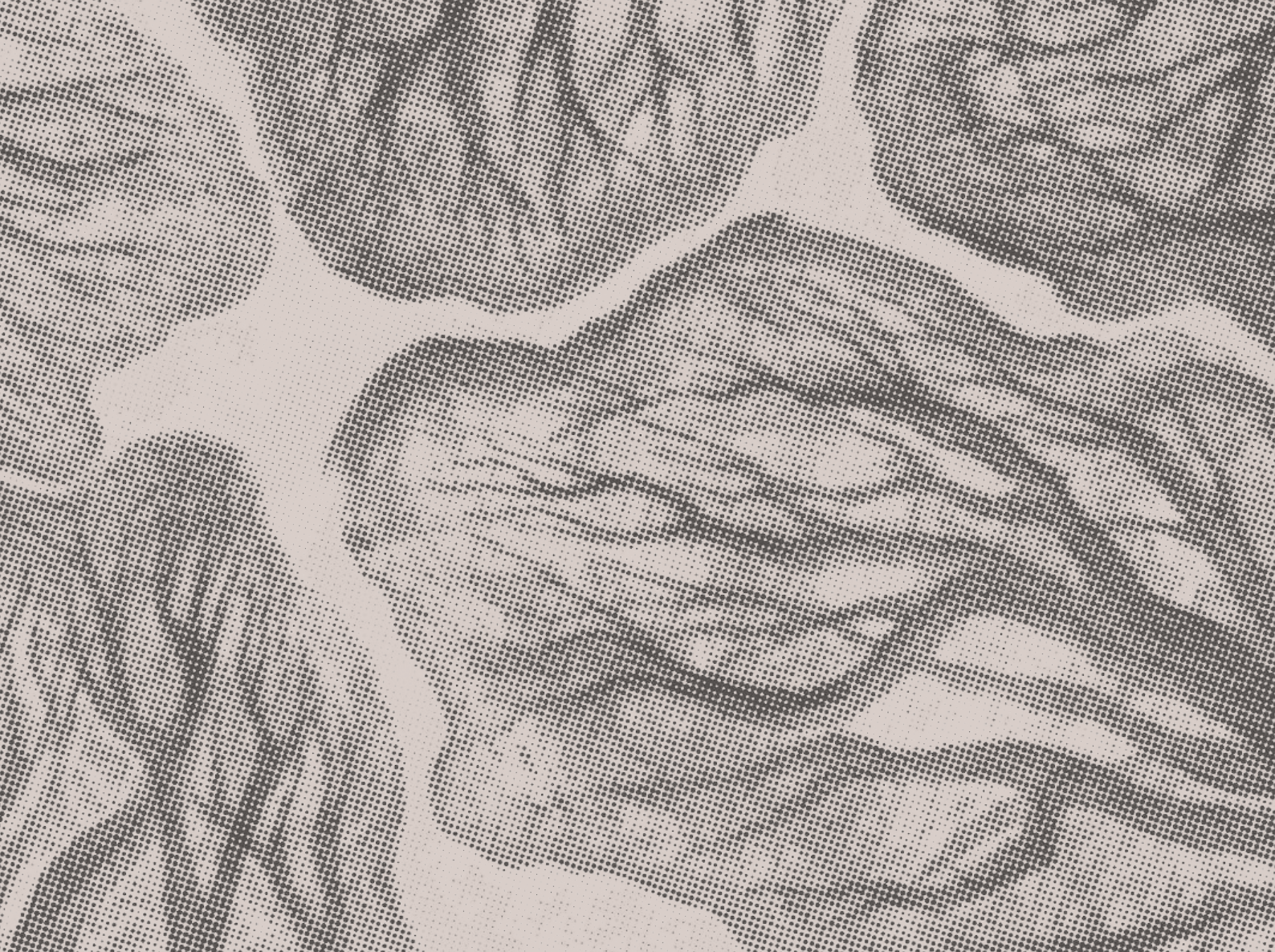
Headquartered in Denver, Colorado, PolyAPI is an innovative US-based startup offering an AI-powered platform for API discovery, consumption, and integration development. A core component of PolyAPI's offerings is an AI-powered assistant designed to streamline the process of discovering and integrating APIs into applications.

PolyAPI's platform is a powerful tool for development teams, enabling them to effortlessly discover company-wide APIs directly within their integrated development environments (IDEs) and turn those APIs into new orchestrations, integrations and microservices using native programming languages such as TypeScript, Python, Java and C#.

PolyAPI offers seamless integration development against leading platforms from Salesforce, Oracle, Microsoft, and even in-house built systems. The platform's flexibility extends to teaching new APIs, ensuring that developers have access to the latest tools and functionalities to meet their evolving needs.

Challenge

Building a modern Kubernetes based development platform is a large undertaking. Recognizing the need for seasoned developers to bring their vision to life, they sought assistance. That's where our team stepped in, ready to tackle the intricacies of development and help PolyAPI toward its goals.



Enter HOTOVO

Given our previous successful collaboration with the founder of PolyAPI on various integrations, extensions, and UIs, there was full confidence in the outcomes and quality of our work.

Initially, HOTOVO was engaged by PolyAPI to provide a couple of developers to help bootstrap the idea and validate the concept. After PolyAPI secured pre-seed funding, we expanded our involvement, bringing on a four-person team to develop the V1 platform. Since its launch in production, we have continued to increase our team's size to support ongoing development.

Results of collaboration between PolyAPI & Hotovo

How does this AI-powered API integration work?

- AI-powered APIs represent the confluence of artificial intelligence (AI) and application programming interfaces (APIs).
- Using LLM AI agents, primarily GPT-4, and natural language processing, Poly has developed a RAG based orchestration to help developers train, discover and use APIs.
- Poly can generate libraries in the preferred programming language, allowing the user to use APIs and events as if they were local functions with IntelliSense in your integrated development environment (IDE). All the necessary APIs and events can be included in a Poly-generated library, which can be regenerated in a matter of seconds.
- Such libraries and integrations generated by Poly can be applied and used in rapid succession, greatly improving prototyping and development.

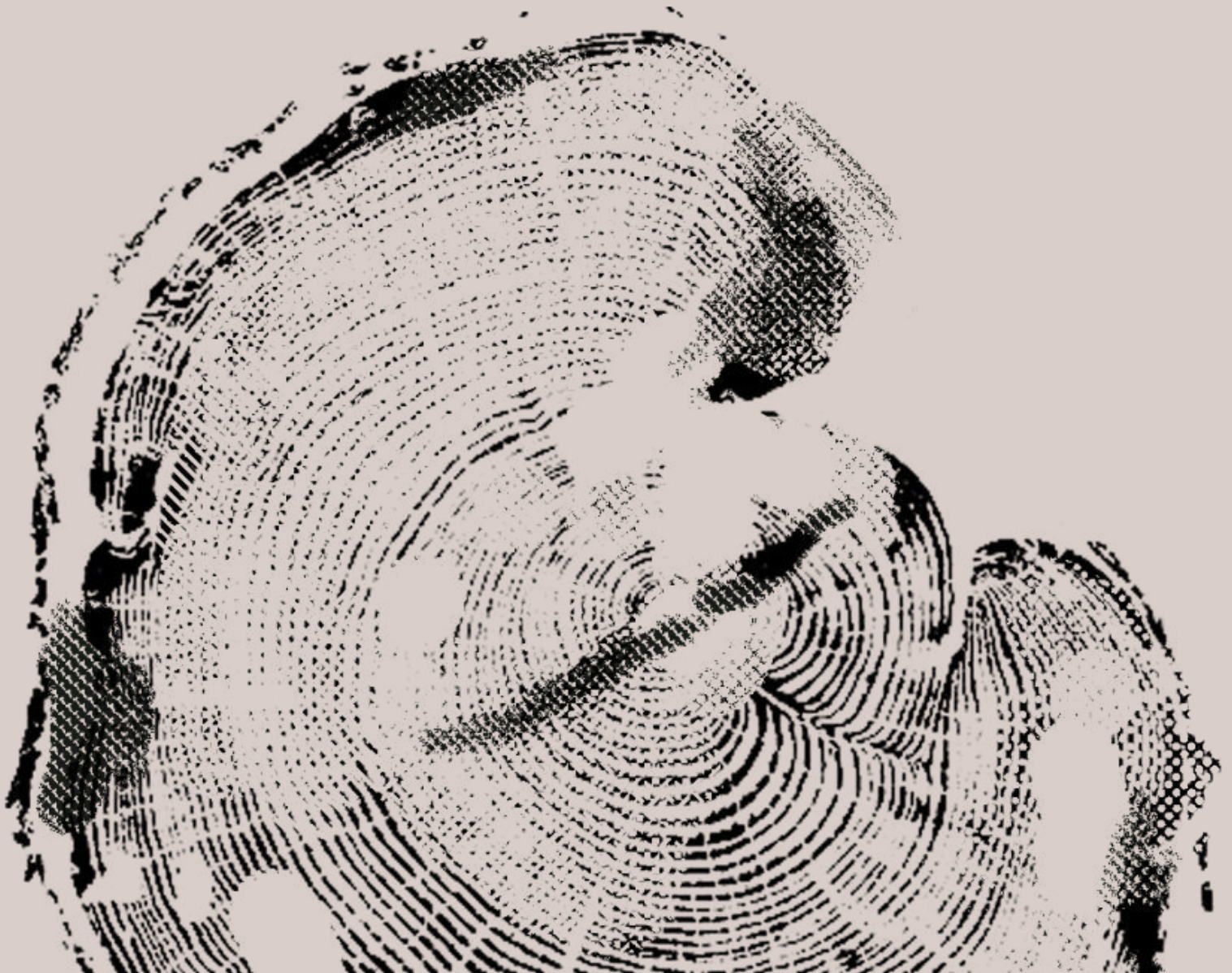
Benefits for PolyAPI

- The development of features at PolyAPI has been greatly accelerated by Hotovo's expertise in platform design.
- The rapid acceleration of platform development led to the launch of the V1.
- The flexibility of Hotovo and the scalability of the development team have shortened the time to market.

The Future of PolyAPI & Hotovo collaboration

PolyAPI aims to be a flexible and comprehensive solution for companies with complex API ecosystems or those seeking to enhance their developer ecosystems.

Therefore, we are determined to strengthen our cooperation and take advantage of the growing demand for AI-related development, which will ultimately bring mutual success for us both.



Technology and Tools Used

- NestJS
- TypeScript
- Python
- Java
- Kubernetes
- Postman

Team size

- 4 Back-End engineers
- DevOps Engineer
- Project Manager

**If you have any questions, please don't
hesitate to contact the Hotovo sales team at
sales@hotovo.com .**

Thank you.

www.hotovo.com