




Bold Visions

THEN  NOW

2025 Annual Report



The Community Foundation
OF MUNCIE & DELAWARE COUNTY



Mission

The Community Foundation of Muncie & Delaware County, Inc. encourages philanthropy, assists donors in building an enduring source of charitable assets, and exercises leadership in directing resources to enhance the quality of life for residents of Muncie and Delaware County.

Vision

To impact and empower Muncie and Delaware County by enabling philanthropy as a trusted community leader and promoting positive change now and for generations to come.

Values

REPRESENTATIVE of community voices
RESPONSIVE to community desires
RELEVANT within community today





Contents

04	Letter from Leadership
06	Board of Directors
07	Volunteers
08	2025 Financials
10	A Foundation Built to Endure, A Network Built to Strengthen
14	When Neighbors Give Together, Communities Grow Together
17	New Funds
19	40 Years of Bold Vision
20	Flexibility for a Changing Community
24	Shaping the Future by Listening First
27	Early Steps Toward Downtown Renewal
28	2025 Donors
32	2025 Tributes
34	Staff



Dear friends,

Every year, our Annual Report offers a moment to reflect on what this community makes possible. As you explore the stories in these pages, one truth rises above the rest: **the bold vision that shaped our early years continues to guide the work happening today.**

For more than four decades, our community has moved forward with optimism, collaboration, and shared purpose. That spirit, set by our founders and carried forward by countless neighbors, remains the foundation of our progress. This is why Muncie and Delaware County continue to be a place where people invest in one another, imagine what's possible, and work toward a future together.

This year, we reached a remarkable milestone: **surpassing \$100 million in assets.** It is a testament to thousands of donors, giving from \$1 to millions, who believe in creating a permanent source of charitable resources that will serve our community. This milestone reflects not only growth in numbers, but deep trust in the power of endowment and the momentum of a generous community.

In 2025, we also celebrated transitions in leadership. We extended heartfelt gratitude to departing Board Members:

Jennifer Gibson, Sara Shade Hamilton, Dave Heeter, and Magi Kirkpatrick Sikora. We were pleased to welcome Lisa Brown and Jeff Huff, and to welcome back Ermalene Faulkner. Each brings valuable experience, perspective, and commitment to strengthening the Foundation and the community we call home.

As you read ahead, you'll discover how bold visions then continue to inspire bold visions now, from strengthening nonprofits and expanding town endowments, to supporting students in new ways and investing in a vibrant, creative downtown. These stories reflect the same values that have guided us since 1985: to be representative, responsive, and relevant.

You are part of this story, too. Your trust, generosity, and belief in this place fuel the momentum we celebrate today. Thank you for helping create **a community where people choose to be.**

With gratitude,



CASEY STANLEY
BOARD CHAIR



MARCY MINTON
PRESIDENT & CEO



Muncie Three Trails Music Series at Canan Commons



*Catalyst at Minnetrista
Museum & Gardens*

Board of Directors



Casey Stanley,
Chair



Mia Johnson,
Vice Chair



Jaime Faulkner,
Secretary



Derron Bishop,
Treasurer



John Anderson Jr.



Lisa Brown



Ermalene Faulkner



Jeff Huff



Daniel Stallings

Volunteers

Committees of the Board

INVESTMENT

Ronald Fauquher, *Chair*
Jennifer Gibson
Ryan Kelly
Thomas Kinghorn
Sarah McCord
Carol Seals
Daniel Stallings
Rob Tyler

FINANCE

Kathy White, *Chair*
Lisa Brown
Trent Dowling
Michael B. Galliher
Erika Hayes
Maura Hoff
Kristen Keisling
Reed Levitz
Carol Seals
Casey Stanley
Stephen Wachtmann

GRANTS

Sara Shade Hamilton, *Chair*
John Anderson Jr.
Rateira Dodds-Simmons
Ermalene Faulkner
Jaime Faulkner
Olivia Fellows
Molly Flodder
Keith Gary
Will Isaacs
Charlize Jamieson
Lathay Pegues
Scott Riggs

IMPACT INVESTING

Jay Allardt
Jason Harrington
Jeff Huff
Alise Phillips
Carol Seals
Magi Kirkpatrick Sikora
Steve Slavin

Volunteer Committee Members

Steve Anderson
Edward Armantrout
Monte Brown
Qiana Clemens
Larry Crabtree
Linn Crull
Amy Dudley
Lance Engle
Tony Evans
Mark Foerster
Barb Frazee
Carolyn Gant
Dave Heeter
Aileen Howard
Marchal Hudson
Ryan Hunter
Theresa Johnson
David Karnes
Daniel Kauffman
Marcia Kelly
Ryan Kramer
Kristen McConnell
Kyle Mealy
Jon Moll
Brandon Morvilius
Kate Murray
Brandon Petro
Jared Quarles
R. Donn Roberts
Clyde Shaffer
Bryan Smith
Steven Smith
Ali Starkey
Cathy Stewart
Samantha Taylor
Kristy Thompson
Ryan Vannatter
Franky Voss
Jim Williams
James Wormer



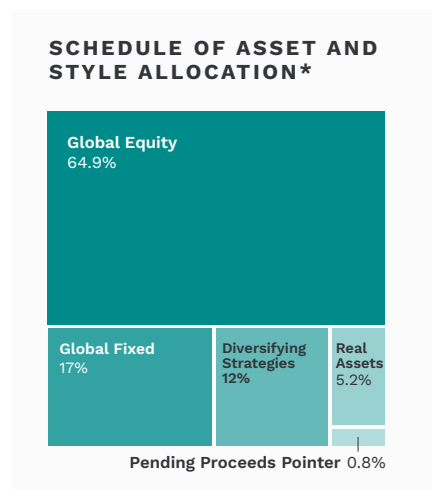
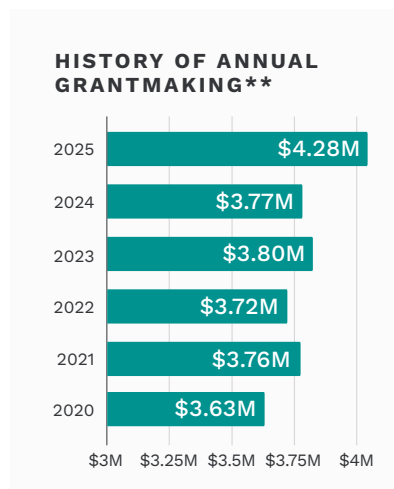
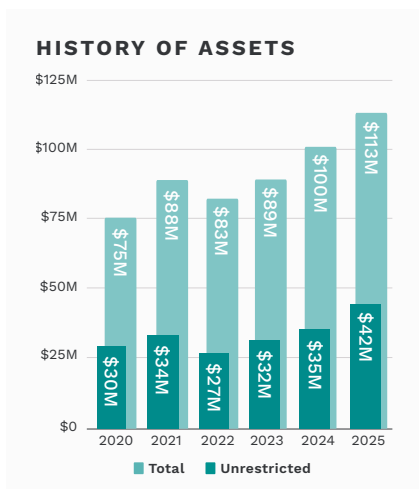
Delaware County Historical Society presents the Backward/Forward Exhibition during ArtsWalk

2025 Financials

Consolidated Statements of Financial Position

Years ended December 31

ASSETS	2025	2024
Cash and cash equivalents	\$9,446,892	\$5,062,518
Certificate of deposit	\$554,224	\$521,974
Prepaid expenses	\$1,675	\$1,675
Pledges Receivable	\$425,125	\$374,609
Note receivable, net of discount	\$500,851	-
Cash surrender value of life insurance	\$246,665	\$241,472
Property, building and equipment, net of accumulated depreciation	\$1,383,622	\$1,177,920
Investments	\$102,093,574	\$93,268,766
	\$114,652,628	\$100,648,934
LIABILITIES		
Administrative expenses payable	\$33,467	\$21,966
Grants payable	\$276,000	\$288,688
Funds held for the benefit of others	\$8,235,082	\$7,549,630
Investments managed for others	\$535,503	\$803,859
	\$9,080,052	\$8,664,143
NET ASSETS		
Without donor restrictions	\$1,363,748	\$991,901
With donor restrictions	\$104,208,828	\$90,992,890
	\$105,572,576	\$91,984,791
	\$114,652,628	\$100,648,934



*The Community Foundation of Muncie & Delaware County, Inc., uses Fund Evaluation Group, LLC (FEG) as its investment consultant. FEG provides a complete range of traditional institutional consulting services including investment policy development, portfolio design, asset allocation, manager search and selection, investment manager monitoring, plan monitoring and education for board members and staff.

**represents the total grant distribution from all funds of the Foundation

\$100 Million in Community Resources

THE COMMUNITY FOUNDATION CELEBRATES MILESTONE GROWTH DUE TO COMMUNITY INVESTMENT

Supported by the power of endowment, The Community Foundation reached \$100 Million in assets in 2025. These are permanent resources that allow the Foundation to respond to changing community needs. From the earliest gifts raised by the Founding Committee to the continued support shown by the community, this pool of resources will be available forever to serve Muncie and Delaware County.

Consolidated Statements of Activities

Years ended December 31

OPERATING SUPPORT & REVENUE	2025			2024
	Without Donor Restrictions	With Donor Restrictions	Total	Total
Contributions	\$285,638	\$9,342,426	\$9,628,064	\$6,169,450
In-Kind Contributions	\$3,296	\$256,437	\$259,733	\$244,703
Rent	\$66,564	-	\$66,564	\$136,143
Investment return, net	\$275	\$9,656,008	\$9,656,283	\$8,680,823
Amortization of discount on note receivable	-	\$31,058	\$31,058	-
Administrative fee revenue	\$1,082,870	-	\$1,082,870	\$1,018,679
Total operating support and revenue	\$1,438,643	\$19,285,929	\$20,724,572	\$16,249,798
NET ASSETS RELEASED FROM RESTRICTIONS				
Satisfaction of purpose restrictions	\$1,074,532	(\$1,074,532)	-	-
Net assets released from restriction pursuant to spending policy	\$4,995,459	(\$4,995,459)	-	-
OPERATING EXPENSES				
Program services	\$4,531,119	-	\$4,531,119	\$3,550,870
Program services - BY5	\$351,808	-	\$351,808	\$170,008
Program services - NSN	\$123,381	-	\$123,381	\$146,068
Management and general expenses	\$1,577,888	-	\$1,577,888	\$1,548,708
Management and general expenses - BY5	\$169,004	-	\$169,004	\$119,388
Management and general expenses - NSN	\$59,891	-	\$59,891	\$58,077
Fundraising expenses	\$255,782	-	\$255,782	\$206,822
Fundraising expenses - BY5	\$50,182	-	\$50,182	\$40,589
Fundraising expenses - NSN	\$17,732	-	\$17,732	\$16,430
Total operating expenses	\$7,136,787	-	\$7,136,787	\$5,856,960
CHANGE IN NET ASSETS				
Change in net assets	\$371,847	\$13,215,938	\$13,587,785	\$10,392,838
Net assets at beginning of year	\$991,901	\$90,992,890	\$91,984,791	\$81,591,953
Net assets at end of year	\$1,363,748	\$104,208,828	\$105,572,576	\$91,984,791

The Community Foundation of Muncie and Delaware County, Inc. and Related Entities

The audited financial statements are available on our website at CFMDIN.ORG



A Foundation Built to Endure, A Network Built to Strengthen

Careful planning in 1984 shapes how we support nonprofits today

For more than forty years, the Foundation has listened deeply to the community and responded with care, collaboration, and long-term thinking. Whether building the Foundation itself or strengthening the nonprofits that serve our neighbors, shared leadership and intentional planning result in enduring impact.



BOLD VISION THEN: **Answering a Question of Community Philanthropy**

In 1984, an ad hoc committee of community leaders gathered around a simple but powerful question: *could Muncie and Delaware County sustain a community foundation?* Their answer came after a year of research, dialogue, and thoughtful deliberation. A “yes” that set in motion a legacy that continues to serve the community today.

At a time when only a handful of community foundations existed in

the state, the Founding Committee understood that building something enduring required careful planning and broad participation. They conducted feasibility studies, traveled to learn from peers, and talked with neighbors. Their work shaped the way the Foundation operates today, with shared leadership, integrity, and trust.

As Steve Anderson noted in his reflections at the Foundation’s 25th anniversary, “Members of the community would govern the Foundation ... and decide how to serve donors, how to create funds, and how to make grants.” Their decisions created a structure that welcomed diverse voices and prioritized service to all of the county.

In April 1985, the Founding Committee unanimously voted to form The



Stefan Anderson, Thomas Kinghorn, Van Smith, and current Board Chair Casey Stanley celebrate 40 years.

Community Foundation of Muncie and Delaware County. Their vision, rooted in optimism and community pride, established the Foundation not only as a grantmaker but as a trusted local leader committed to long-term good.

The planning and partnership that defined our earliest years continue to shape how we respond to community needs today. Just as our founders asked what a community foundation could make possible, today's leaders are asking how we strengthen the organizations that care for our community.

**BOLD VISION NOW:
Strengthening Nonprofits**

Nearly four decades later, another pivotal question emerged: *How do we ensure the*

nonprofits serving Muncie and Delaware County have the strength, support, and stability they need to thrive?

The answer began taking shape in 2019, when the Foundation received a planning grant from Lilly Endowment Inc. to study community needs. Through research and conversation, a clear theme surfaced: nonprofit organizations were carrying immense responsibilities with too few resources dedicated to their own organization's health. There was a noticeable gap in local training, coordination, and technical support. Nonprofit leaders shared a common refrain. They needed time, tools, and a trusted partner to help them plan for the future.

Responding to this call, the Foundation convened a cross-sector coalition including Heart of Indiana United Way, Innovation Connector, Muncie-Delaware



Historical Festival parade downtown Muncie 1973

Members of the Founding Committee:

- | | | |
|------------------------------------|--------------------|-------------------|
| ◆ Stefan Anderson,
<i>Chair</i> | ◆ Robert Holt | ◆ Alan Simmons |
| ◆ Doug Bakken | ◆ Thomas Kinghorn | ◆ Van Smith |
| ◆ Edmund Ball | ◆ Richard Ringoen | ◆ David Sursa |
| ◆ Ted Brown | ◆ Charles Rothhaar | ◆ Sherman Zeigler |
| | ◆ Edgar Seward | |



County Economic Development Alliance, Shafer Leadership Academy, and Ball State University’s Office of Community Engagement. Their collective work led to the creation of the Institutional Strengthening Program, which later became the Nonprofit Support Network (NSN).

Launched in 2022, NSN has become a dependable resource for nonprofit leaders seeking practical guidance and collaborative problem-solving. Through HR assistance, training cohorts, and convenings designed to elevate shared learning, NSN helps

strengthen the organizations that care for our community.

The impact is clear. In 2025 alone, NSN supported dozens of organizations and leaders through listening, learning, and collaborative exploration. It has filled gaps, fostered partnerships, and provided responsive support that helps nonprofits focus on sustainable mission work.

Today, NSN is a partner organization to the Foundation, sharing governance and a downtown location. Together, we are working to build resilience so

nonprofits and the people they serve can thrive. Mia Johnson serves as Vice Chair of the Foundation's Board and is a member of the NSN Advisory Committee. She explains, "Strong nonprofits build strong communities."

This work reflects a throughline from 1984 to today: listening first, responding thoughtfully, and building with the future in mind.

"Strong nonprofits build strong communities."

- MIA JOHNSON



Strong nonprofits make strong communities. By investing in organizational health, shared learning, and supportive networks, we are helping build resilience, strengthening nonprofits to meet today's challenges and prepare for tomorrow's opportunities.

This is the enduring legacy of our founders' vision: philanthropy that evolves, collaborates, and strengthens the place we call home.

Grant Learning Series: Preparing and Seeking in collaboration with Muncie Public Library





When Neighbors Give Together, Communities Grow Together

The Ball family's first challenge match created a path for today's town endowment opportunities

Across Muncie and Delaware County, generosity has always been a shared endeavor. From small gifts to large collaborations, our community's strength grows when neighbors invest together in the places they love. This spirit, present from the Foundation's earliest days, continues to drive lasting impact.

BOLD VISION THEN: **Inviting the Community to Participate**

From its earliest days, the Foundation was rooted in the belief that philanthropy succeeds when everyone has a place at the table. The Founding Committee and early leaders were committed to a model in which “no gift would be too small,” and everyone could be a stakeholder.

This inclusive vision gained immediate momentum. In April 1985, the Ball family pledged \$1 million to match community giving. The Foundation's earliest leaders made personal commitments of around \$300,000 and drafted a plan to raise the rest. Neighbors gave generously. Local businesses stepped forward to help. Foundations, families, and first-time donors came together to create something lasting. The match was met and the endowment was off to a healthy

start. A second match followed and the culture of collective impact persevered.

Like any startup, the Foundation's early years required creativity and humility. Borrowed office space, shared staff, and simple tools helped the Foundation get off the ground. Support came in many forms, proving that community philanthropy is truly built by community members working together.

The same spirit that rallied neighbors in 1985 continues to guide our work today. What began as a bold experiment in community participation has become a lasting model for how generosity grows when everyone has a seat at the table.



Yorktown Farm & Artisan Market

Selma Bluebird
Days Parade



BOLD VISION NOW:
**Communities Working
Together for Bigger Impact**

That spirit of collective generosity continues to define the Foundation’s work today, especially through challenge matches that invite neighbors to make a lasting impact.

Over the years, Lilly Endowment Inc. match opportunities have helped grow unrestricted funds, which, in turn, expand our ability to meet emerging needs through Community Grants. These opportunities invite donors of all sizes to help strengthen the long-term health of our community.

Today, that same model is inspiring growth in our town endowment funds. Albany and Selma currently have active match opportunities to support local giving, and each community’s endowment reflects the power of neighbors investing in the places they

call home. Local committees review grant applications, ensuring decisions are made by those who know their town best.

The impact is undeniable. Since Yorktown created the first town endowment in 2000, the funds serving Albany, Gaston, Selma, and Yorktown have supported parks, libraries, schools, youth programs, and countless neighborhood projects. Each grant represents something larger than itself; it starts with collective investment.

In 2025, the four town endowment committees collaborated to support Isaiah 117 House – Delaware County, a program providing comfort and stability for children awaiting foster placement. It



*“One gift becomes many,
and many gifts become
lasting change.”*

- LISA BROWN

was the first time all committees joined in a single grant. The moment illustrates what's possible when communities not only give but give together.

Residents, volunteers, and donors are driving these successes. Lisa Brown, Foundation Board member and member of the Gaston Town Endowment Committee, shared, "One gift becomes many, and many gifts become lasting change."

When people give together, the community grows together. Today's gifts, across the county and within our towns, continue a legacy of collective generosity that shapes vibrant places where people choose to be.

This is generosity you can feel: donors coming together to build strength across our community.

New Funds

UNRESTRICTED

Unrestricted funds give the Foundation the flexibility to support grantmaking and programs that evolve with the times.

- ◆ Brown Family Unrestricted Fund
- ◆ Rick and Lila Edmundson Legacy Fund
- ◆ Dr. Susan M. Johnson Unrestricted Fund
- ◆ ResolveTech Fund

DESIGNATED

Designated funds provide ongoing support to one or more organizations.

- ◆ Close Encounters Muncie Fund
- ◆ Founders Endowment for the Building Fund
- ◆ Betty and Thomas L. Kendall Fund
- ◆ Muncie Sports Commission Fund
- ◆ Larry V. Souders Memorial Fund
- ◆ Trailhead Enhancement Fund
- ◆ Faye Wingate Memorial Fund

DONOR ADVISED

Donor Advised funds give donors a hands-on role in recommending grants to nonprofits.

- ◆ Psi Iota Xi Alpha Charities Endowment Fund

SCHOLARSHIP

Scholarship funds provide financial support for college or vocational training.

- ◆ Community Scholarship Fund
- ◆ Mabel S. Epler Scholarship Fund
- ◆ Howard and Erma McVicker Scholarship Fund
- ◆ Hunt & Stedman Sustainability Scholarship Fund
- ◆ Sharon Seager Scholarship Fund
- ◆ Jen Southerland Memorial Scholarship Fund



Walnut Street,
Downtown Muncie



40 Years of Bold Vision

2025 marks the 40th anniversary of The Community Foundation of Muncie and Delaware County. With the support of community donors, impact has reached every corner of the county.

5,052
DONORS

\$81 M
GRANTS

\$107 M
DONATIONS

11,937
GRANTS AWARDED

\$100
MOST COMMON SINGLE
DONATION AMOUNT

1,633
SCHOLARSHIPS AWARDED

426
FUNDS

WANT TO ADD
YOUR IMPACT?

Give now.





Flexibility for a Changing Community

Unrestricted giving shaped our first decades – a new scholarship fund prepares us for the future

In every chapter of our history, flexibility has allowed the Foundation to meet emerging needs with confidence. From early unrestricted gifts to today's evolving scholarship landscape, trust from donors has enabled us to respond to the community we serve while preparing for the future.

BOLD VISION THEN: Trust, Flexibility, and Early Momentum

In the Foundation's earliest years, unrestricted giving was the cornerstone of its work. These were gifts made with extraordinary trust. The gifts had no caveats, no restrictions, and no expectations beyond serving the community well.

This flexibility allowed the Board of Directors to respond quickly and meaningfully. In the very first year, unrestricted funds helped support the YMCA, the NAACP, and the Muncie Civic Theatre. Such early grants built credibility and demonstrated commitment to the broad needs of the community.

By 1992 – just seven years after its founding – the Foundation had returned \$1 million in grants to the community, all through unrestricted support. It was a

milestone made possible by donors who trusted that their investment would be used wisely, and by leaders committed to integrity, transparency, and service.

Unrestricted funds allowed the Foundation to be relevant, responsive, and resilient. They remain the backbone of our ability to respond to emerging needs and opportunities.

The role of flexibility has remained constant, even as the community has changed. Just as early donors trusted the Foundation to respond wisely, today's supporters empower the Foundation to support people, like students who are navigating a rapidly shifting educational landscape.

→ **BOLD VISION NOW:**
**The Community
Scholarship Fund**

The value of flexibility continues to guide our work, especially in our approach to supporting students. The educational landscape is shifting rapidly. Students pursue a wider range of postsecondary paths. Career fields evolve quickly. First generation and nontraditional learners often require a different kind of support than traditional scholarships were designed to provide.

Recognizing this, the Foundation launched the Community Scholarship Fund in late 2025. This new discretionary scholarship fund gives the Foundation the flexibility to meet students where they are and respond to what the community needs next.

Unlike most scholarships, which are guided by donor-defined criteria, the Community Scholarship Fund enables the Foundation's Board of Directors to adapt award criteria over time. Funds can be directed toward high-demand careers, future workforce needs, or emerging educational models. The fund can support a variety of student types, like a traditional senior headed to a four-year university or a parent returning to school to pursue a new career.

This forward-looking approach not only helps students but also strengthens our entire scholarship program. In 2025, the Foundation awarded 74 scholarships totaling \$268,150. With the addition



*Ball State University ECAP
Open House*



Toolsong Gallery at
Madjax Maker Force

of the Community Scholarship Fund, and three new donor-established scholarships, the program is evolving to better serve today's learners.

Effective in 2026 as costs also rise in higher education, the minimum to create a new scholarship fund increased to \$100,000. This shift is designed to ensure that each scholarship award is both meaningful and sustainable. Donors continue to play a critical role in supporting students, whether through designated scholarships or contributions to discretionary funds like the Community Scholarship Fund.

As Foundation Board Member and Scholarship Committee member Derron Bishop shared, "The Community Scholarship Fund gives us the flexibility to meet students where they are and respond to the community in the current moment." It is a modern tool built on the same trust and generosity that shaped our earliest years.



"The Community Scholarship Fund gives us the flexibility to meet students where they are."

- DERRON BISHOP

As education and career pathways evolve, flexible scholarship funding ensures that every learner, no matter their stage of life, has opportunities to grow. This future-focused approach honors our history while preparing tomorrow's workforce and strengthening the community we all share.

Your unrestricted gift empowers adaptability that creates opportunity for Muncie and Delaware County.



*Muncie Pride Festival at
Canan Commons*



Shaping the Future by Listening First

Decades of responsive leadership guide our investment in a vibrant downtown

For decades, the Foundation has believed that meaningful leadership begins with listening. By elevating diverse voices, adapting to community needs, and fostering strong partnerships, we have helped shape a future that reflects the values and aspirations of Muncie and Delaware County.

BOLD VISION THEN: **Continuous Improvement as a Community Principle**

From the beginning, the Foundation's leaders understood that staying relevant required a willingness to grow and adapt. The first Board and committees were constantly evaluating and expanding policies and ensuring that new voices had a place in the conversation.

Introducing term limits, refining processes, and strengthening governance were part of an intentional culture of continuous improvement. The founders believed that leadership meant more than grantmaking; it meant listening, evolving, and helping shape what came next.

This mindset laid the groundwork for the Foundation's role as a convener, collaborator, and long-term community partner.

The same commitment to responsive leadership that strengthened our governance in earlier decades now guides our work in shaping a vibrant, welcoming, and connected arts ecosystem downtown. Listening continues to inform how we invest, collaborate, and support the organizations that bring our community to life.



*Minnetrista
Farmers Market*

BOLD VISION NOW:

Building a Creative, Connected, Community

That early commitment to responsive leadership continues through the Foundation's support of the Creative Space Action Plan (CSAP). This long-term initiative reflects a coordinated effort to build a vibrant, active, and connected arts ecosystem. Focused on connecting a creative corridor anchored by Madison, Main, Jackson, and Walnut streets in downtown Muncie, to arts and culture happening across Delaware County, we envision strengthening a place where creativity, culture, and community life intersect.

In 2025, the Foundation made its largest annual investment yet in creative space development. Nearly \$250,000 in strategic grants strengthened the organizations and spaces contributing to the CSAP. This investment reflects a shift from project-by-project funding to strategic development: layered, intentional support that fosters long-term momentum.

Through CSAP implementation, grants supported consulting, capacity building, staffing, planning, marketing, software, and capital improvements. These investments help local organizations, from arts nonprofits to community partners, take confident steps forward.

The Foundation also plays an active leadership role, convening partners, hosting leadership council meetings, and strengthening relationships across the creative sector. By listening first and collaborating deeply, the Foundation helps ensure that development



“Our investments today are building an ecosystem where creativity, culture, and community can grow together.”

- JAIME FAULKNER

benefits everyone and reflects community priorities.

This work builds on decades of involvement in downtown revitalization. From early investments in arts organizations to recent collaborations with city and regional partners, the Foundation's role has evolved alongside the community. Today, we are not only responding to opportunities, we are also helping shape them.

As Foundation Board member and Strategic Committee member, Jaime Faulkner reflected, “Our investments today are building an ecosystem where creativity, culture, and community can grow together.”

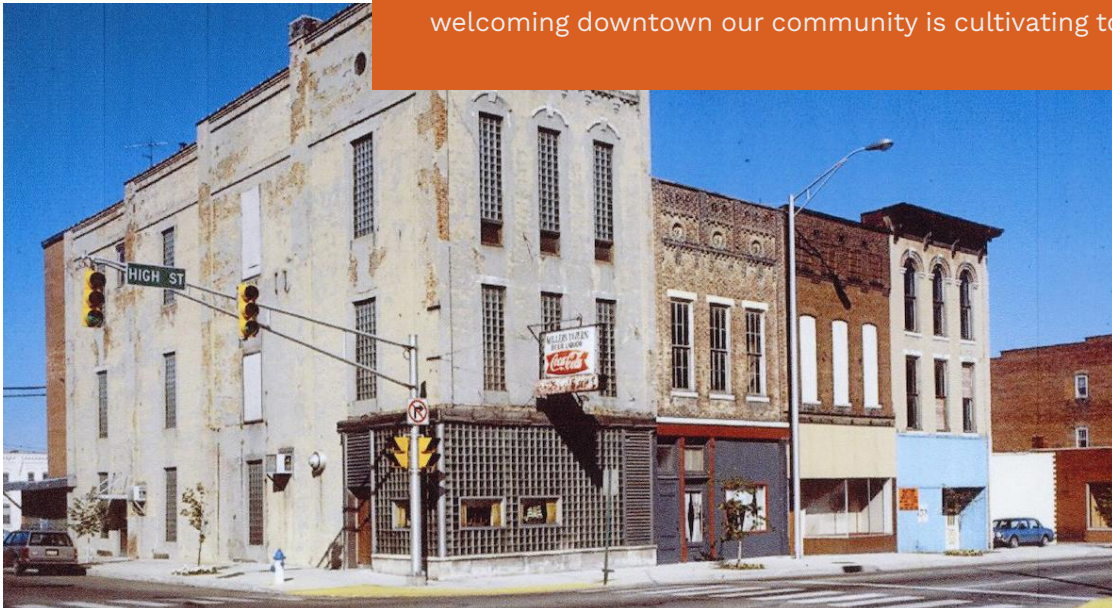
CSAP represents a shared belief in the power of place. It's a belief that a vibrant, inclusive downtown strengthens the social and economic fabric of our entire county.

By investing in the people, places, and partnerships that fuel creativity, we help shape a community where artists, organizations, and neighbors can grow together.

BOLD VISION THEN:
Early Steps Toward Downtown Renewal

*Historic Miller's Tavern
alongside present day
storefronts at the 100 block
of North High Street, Muncie*

In the late 1990s, downtown Muncie stood at a crossroads, with aging buildings and uncertain prospects. When a storm left Miller's Tavern severely damaged, a Foundation grant to support demolition cleared a long-standing obstacle and signaled that change was not only possible, but underway. That early step opened the door for new uses, new energy, and renewed belief in what downtown could become. Additional investments in places like the Horizon Convention Center and the Muncie Children's Museum continued to build momentum. Together, these early actions helped plant the seeds for the vibrant, welcoming downtown our community is cultivating today.





2025 Donors

A

Accutech Systems Corporation
 Sophia Ackerly
 Peggy Adams
 Shawn Adams
 Tom and Beckie Adams
 Debbe Adamson
 Gary Addison
 Jay and Susan Allardt
 Jane Allerton
 Hazel Amos
 Cyndi Anders
 John and Che'Reese Anderson
 Julius and Belinda Anderson
 Steve and Joan Anderson
 Edward Armantrout and Bonita Ramirez
 Asio Capital LLC
 Steven W Austin
 Stephen and Mary Avila

B

Dave and Joan Bahlmann
 James and Nancy Bailey
 Eric Baker
 Ted and Gail Baker
 Ball Brothers Foundation
 Ball State University
 Rudy and Candace Ballard
 Michael and Patricia Barlow
 Sherry Barlow
 WaTasha Barnes Griffin
 J. Neal Barnum
 Gary and Kathy Bartlett
 Lonita Bassett
 Steve and Amy Bassett
 Heather Beane
 Daniel and Carolyn Beard
 Karen and David Beard
 Mary Ann Beard
 John and Diane Benadum
 David and Mary Benbow
 Judy Benken
 Daniel and Janet Benson
 Teresa Bergan
 Megan Berland
 Vicki Bicket
 Ken and Patti Biller
 Jeffrey and Susan Bird
 Derron and Charity Bishop
 Donald and Jane Black
 Marie Blackburn

Dennis and Tanya Blair
 Michael Blake
 Jane Botts
 Zac and Cara Bow
 Forrest and Mary Bowers
 Trina Bowling
 Scott and Sally Bowman
 Sharon Box and Heidi Ong
 Boyce Systems
 Scot and Jo Boyce
 Judy Bracken
 William and Margee Bracken
 Florence Briggs
 Ken and Peggy Briner
 Mark and Cathy Brinker
 Rob and Mary Brodhead
 Diane Brooks and Janice Largent
 Ginny Brooks
 Mike and Lisa Brown
 Ronald Brown
 Pat Brunette
 Nita Bruns
 Schuyler and Mary Louise Buck
 Chris and Jen Bunch
 Megan Burke
 Jon and Karen Burkhardt
 Abby Butler

C

Malcolm and Rebecca Cairns
 Michael Calvert
 Lauren Candiano
 Care Animal Hospital
 Nancy Carlson
 Ann Carney
 David and Jama Carter
 Julie Carter
 Thomas Charles
 Brent and Teresa Cheatham
 Nicole Chernish
 James and Kathleen Cheslik
 Children's Clothing Center of Delaware County, Inc.
 Christian Student Foundation
 Sally Christie
 Dave Christman
 The Christian Church of Bradford
 Mrs. Jay Church
 Margaret Cinninger
 City of Muncie
 Leigh Clark

Patricia Clark
 Thomas Clark and Mary Foster
 Richard and Raquel Clasby
 Susan Cline
 Michael and Susan Cloyd
 Joshua Coggeshall
 Brian Condon
 Donald and Donna Sue Conner
 Shelly Conner
 Contract Industrial Tooling, Inc.
 Carolyn Cooley
 Ann Covalt
 Katherine Cowgill
 Angela Cox
 Gordon and Pam Cox
 Sharon Cox
 Larry and Connie Crabtree
 Kevin Crago
 Laura and Dave Crampton
 Allie and Juanita Craycraft
 Greg and Barb Cross
 Jonathan Cross
 Linn and Susan Crull
 Ted Cunliffe

D

Steven and Kimberly Dalton
 Dick and Jenifer Daniel
 David P Gilliam & Associates
 Julie Davis
 Molly Davis
 Wil and Cindy Davis
 Martha Dawson
 Mary and Jim Dawson
 Chris and Catherine Day
 Cheryl and Jim Decker
 Linda DeHart
 Michael and Lucinda Delaney
 Delaware County Historical Society
 Jack and Patty Demaree
 Steven Dettman
 Mary Dillon
 Robert Dole
 Cherilynn Dollison
 Cornelius and Mary Dollison
 Anthony Dowell
 Kim Dowling
 Trent and Karen Dowling
 Jane Duckworth
 James Duncan
 Larry and Gloria Durham

*Yorktown's Summer
Concert Series on
the Green*



E

Early Learning Indiana
Rick Edmundson
Bill Eidson
Paul and Pamela Eifel
Anthony and Carol Elliott
Mark and Molly Ervin
Lance and Mary Jo Estep
Exchange Club of Muncie

F

Natalie Farrell
Edgar and Anissa Faulkner
Edgar and Ermalene Faulkner
Jaime and Adam Faulkner
Ron Fauquher
Fayette County School Corporation
Olivia Fellows
Jeffrey and Susan Felton
Jeanine Fillmann
Brian Finan
James and Ellen Finan
Laura Finan
First Merchants Private Wealth
Advisors
James and Elizabeth Fisher
Jud and Carey Fisher
William and Vicki Fisher
Mark and Molly Flodder
Christopher Flook and Kourtney
McCauliff
Sherry Flowers
Mark Foerster
Larry and Donna Fouch
Joe Fouse
Frank Brinkman Law, PC
Free of Fear LLC
Daniel Freund
Kenneth and Barbara Frost

G

Amy Gackenheimer

Mike and Cathy Galliher
Thomas and Carol Gardiner
John Gates
Lois Geiger
George & Frances Ball Foundation
Judy Gibson
Jennifer Gilland
Jane Gillette
James Gooden
BriAnna Green
Mark and Traci Greenberg
Merrill and Linda Greene
Della Gregory
Linda and Connie Gregory
Michael and Buffy Grieves
Shari Groce

H

Barry Hall
Hamer D. and Phyllis C. Shafer
Foundation
Sara Shade and Brandon Hamilton
Robert and Peggy Haney
Linda Hanson
Bill Harris
Ellen Harris
Gayle and Jeannine Harrold
Brian Haughn
Heart of Indiana United Way
Jon and Janis Hendrix
James and Jacqueline Hennigar
Steven and Kristen Herbst
Laurie Hess
Charlie Hetrick
Kathleen Hetrick
Rick and Carrie Hill
Danny and Kathryn Hinds
Home Savers of Delaware County
Mark Hood and Susan Knight
David and Suzanne Hoover
Lindsey Horan
Dan and Mary House
Aileen Howard

Frank and Nancy Hudson
Jeff and Julie Huff
Bill and Roseanne Hughes
Martha Hunt and Barbara Stedman
Virginia Hunter
Kelli Huth

I

IDEM, Drinking Water Branch
Independent Colleges of Indiana
Indiana Philanthropy Alliance
IU Health Ball Memorial Hospital
Richard and Pamela Ivy

J

Regina Jackson
Charlize Jamieson
Laura Janney
Jason White State Farm
James and Rosemarie Jeffery
Susan Johnson
Jennifer Johnson
Julianna Johnson
Larry and Rhonda Johnson
Roni Johnson
Wayne and Mia Johnson
Mary Jolgren
Dustin Jones

K

Kappa Kappa Kappa, Inc.
Dain and Amanda Kavars
Mitchel Keesling
Stanley Keil
Denise Kelly
Eric and Sandra Kelly
John and Marcia Kelly
William Kelly
Martha Kendrick
Pat Kennedy
Elsie Kerr
Bob Kersey

Linda Keyton
Jeffrey and Ruth Kiger
Martha Kinder
Jack King
Jim and Shirley King
Thomas and Nancee Kinghorn
Joe and Linda Kinnett
Kirk and Deb Mace Memorial
Foundation
Tom and Anita Kishel
Teresa Klingensmith-Haines
Thomas and Alex Kocoshis
Robert Koester and Jill Gauker
Kirby and Kristi Koriath
Carol Kosisko
Dennis and Carolee Kramer

L

Robert La France
Joe and Beverly Lafferty
Martha Laws
Susan Leffler
Steven and Barbara Lehman
Lilly Endowment Inc.
Betty Linville
Little Red Door Cancer Agency
Michael Long
Sandy Love
Connie Loveless
Janet Loveless
Stephen Lowry
Mike and Nicci Lunsford
Tim and Rachel Lunsford

M

Arthur and Dorothy Malman
Gabe and Kerri Manis
Chad Mann
Meryl Mantione
Gloria Mantock
Dick and Liz Marshall
Ronald and Anita Martin
Mary Marx
Masterman Family
Jay and Mary Ann Matchett
John Mays
Michael Mays
Kathy McCauliff
Michael and Elizabeth McClinchie
Bill and Jan McCune
James and Joan McKinley
Mark and Joann McKinney
Suzi McLaughlin
Robert Mehling
Bea Mertens
Fred Meyer

Chris and Betsy Miller
John and Grace Miller
Mark Millikan
Marcy and Jason Minton
Joseph and Kerri Misiewicz
Lisbeth Mitchell
Jon Moll and Nancy Barefoot Moll
Karen Moore
Mark and Mary Mordue
Tom and Kathryn Morrison
Michael Motsenbocker
Wilfridah Mucherah
Erwin Mueller
Muncie Altrusa Foundation, Inc.
Muncie Power Products
Muncie Sports Commission
Muncie Sunrise Rotary
Steven Murphy and Lisa Thomas
James and Kate Murray
Ryan and Jen Murray
Todd and Jane Murray
Murray's Jewelers
Rick and Eva Muzzy

N

Cathy and Terry Nance
Ronald and Susan Naylor
Mark Neely and Jill Christman
Joan Nelson
Jason Newman
AJ Nicholas
Normandy Flower Shop
Tanner Norrick
Akilah Nosakhere

O

Donald Odle
John and Margo Oesterle
Mary Ann Olinger
Larry and Barbara Ottinger

P

Barbara Palmer
Don and Claire Park
Paul and Stacia Partezana
Patricia Schaefer Foundation Trust
Wayne and Ruth Payne
Richard and Regina Peck
William and Betsy Peckinpaugh
Patricia Pelizzari
Neil and Lynda Perrel
Frank and Angela Petty
Mick Phelps
Luke and Dianne Philippsen
David and Tamara Phillips

Karen Pickering
Carol Pickron
Pleasant Hill United Brethren Church
Donna Polcz
Paula Price
Pridemark Construction Inc.
Prime Trust Federal Credit Union
Psi Iota Xi Charities, Inc.
Judi Putt

R

Nancy Wean Reece and F. James
Reece
Steve and Amy Reed
Brad Rickel
Dan and Sherry Ridenour
Linda L. Rigglin
Sherry Rigglin
Lori Rigglin-Kress
Donn and Freida Roberts
Harold and Rita Roberts
Jeff Alan Robinson
Rochester Metal Products Corp.
Janet Roepke
Judith Roepke
Ronald L. McDaniel Foundation
David and Ann Marie Ross
Rotary Club of Muncie
Royal Family Dentistry
Max and Barb Rudicel
Nanette Rushton

S

Tania Said
Charles and Sarah Sanders
Judith Schell
Joel and Rebecca Scherrer
Neil and Jane Schmottlach
Kay Schnuck
Andrew Seager
Carol Seals
Sally Secor
Seldom Rest Farms
Shafer Leadership Academy
Timothy and Melinda Sheffield
Dan and Barbara Shepperd
Sherman and Marjorie Zeigler
Foundation, Inc.
Kelly and Joel Shrock
Bill Shroyer
Kent Shuff and Steve Fennimore
Sigma Phi Epsilon, Indiana Gamma
Chapter
Jim and Denise Simon
George and Mary Sissel
Julie Skinner

Benny and Patsy Slaughter
 Suzanne Small
 Nancy Smith
 Gregory and Sandra Smith
 Kelly Smith
 Michael and Susan Smith
 Steve and Barbara Smith
 Tom and Pam Smith
 Ashley Smithers
 Jenny Smithson
 Robert Smitson
 Lee and Cathie Snider
 Elaine Snyder
 Randy and Cindy Sollars
 Martha Songer
 Gabi Sorrell
 Genet Soule
 Shane Southerland
 Ron and Alice Spangler
 Joseph Speece
 Rich and Sheila Spisak
 Stephen Springman
 Maggie Spry
 Daniel and Lynne Stallings
 Casey and Jennifer Stanley
 Kelly and Donna Stanley
 Don and Ramona Stetson
 Daniel and Cathy Stewart
 Deana Stewart
 David and Sandra Stocker
 Terri Stone (Blaesing)
 Janet Stratton
 John Streicher
 Kallie and Alex Sulanke
 Superator Inc
 Charlie and Claudia Sursa
 Joseph and Jolena Sutherland

Kylene Swackhamer
 Daniel and Julie Swafford

T
 Jon Taylor
 Samantha Taylor
 Robert Terhune
 Larry and Jo Ann Thomas
 Linda Thomas
 Don and Sharon Stamper Thompson
 Barbara Townsend
 Dian Townsend
 The Townsend Company, LLC
 Barry Turner
 Tyler Truss Systems
 Rob and Julie Tyler

U
 Union Chapel Ministries
 United Way Suncoast
 James Updike
 US Architects

V
 LaShanta Vaughn
 Rob Vega
 Harry Vernon
 Jim and Karen Vincent
 Annemarie Voss

W
 Stephen and Jenna Wachtmann
 Rex and Rhonda Waldo
 Steven and Marilyn Waldo
 Terry and Cheryl Walker

Ken and Suzie Wallach
 Dan Wantz
 Christian and Jane Wargo
 Jennifer Warrner
 Carol Watkins
 Marsha Weaver
 Robert Weaver
 Weber Office Equipment
 Regina Wendel
 Wes Del High School class of 1980
 Westminster Village
 Don and Sue Whitaker
 John and Susan Whitaker
 White River Wealth Advisors, Foote,
 Hanson & Davis Inc.
 Doug and Kathy White
 Heidi White
 Roger White
 Josh Whited
 Whiting & Company
 Heather Williams
 Rock and Judi Williams
 Jim and Pam Wingate
 Suzanne Wingate
 Chadd and Amanda Winkle
 Mark and Mary Ann Wright

Y
 Tony and Amy Yakos
 Jennifer Yarbrough
 Yorktown Chamber of Commerce

Z
 Stephen Zirkle
 Cindy Zumbaugh



*Carnegie Lights
 & Cocoa with
 The Community
 Foundation*

2025 Tributes

Honorarium:

Gary W. Addison
Gloria Adams and Volunteers of
Children's Clothing Center of
Delaware County
Erin Ailstock and Staff of Westminster
Village
Brian and Janie Allardt
Stefan and Joan Anderson
Ashlee Anderson
David and Joan Bahlmann
Jim Ballenger
Brittany Bass
Daniel J. Beard
Robert and Tommye Beavers
Normal E. and Joyce M. Beck
Floyd Clinton Bird
Megan Bohm
Sue Bonneau
Mary E. Bowers
Rob and Mary Brodhead
Lee Ann Brown
Michael W. and Lisa M. Brown
Brenda Brumfield and Staff of Greater
Muncie Chamber of Commerce
Edward and Kathy Burgauer
Josephine Burton
Teresa Clemmons and Staff of A Better
Way Services
Glen and Linda Coverdale
Andrew Dale
Wil Davis
Gary Dodson and Jill Jereb
Mary Dollison
Phil Ewart
Members of Exchange Club
The Nemchek Family
The Steiner Family
Ron Fauquher
Jeff and Nancy Fisher
Jerry and Lisa Fisher
Jim and Elizabeth Fisher
John and Debbie Foster
Rodney and Kim Frasier
Chris French
Kara Gages
Jennifer Gilland
Ashaki Goodall
Connie R. Gregory
Linda Gregory
Pat Guize
Jenica Hall

Melanie Hanser
Jill Harkema
Diane Harris
Tom Harris
Jeff Heavilon
Dave and Deb Heeter
C.S. Hendershot
Charles and Charlotte Hetrick
R. David and Suzanne Hoover
Aileen Howard
Joseph Howell
Richard D. Hughes
Ann Johnson
David Johnson
Jennifer Johnson
Julianna Jarabak Johnson
Dr. Mia Johnson
Roni Johnson
Susan Johnson
Sue Kaiser
John and Marcia Kelly
Kasey Kiel
Michelle Kinsey
Kevin Klinger
Jeffrey and Beth Lang
Charlene LaWall
Doris Lawhead
Tracy Lewis
John and Katherine Littler
Mike and Nicci Lunsford
Noam Marienau
Jenni Marsh and Staff of Heart of
Indiana United Way
Dick and Liz Marshall
Bill and Jan McCune
Linda McGilliard
Howard McVicker
Gary and Lana Merritt
Fred A. Meyer Jr.
Al Miller
Keith and Elaine Miller
Ken Miller
Kim Miller
Marcy Minton and Staff of The
Community Foundation
James Mitchell
Missy Modesitt
Jon Moll
Erwin and Barbara Mueller
James and Kate Murray
Ryan and Jen Murray
Lexi Musselman
Lee Nicholson

John and Margo Oesterle
Stefanie Onieal
Ellie Parkison
Zach Poor
Beth Quarles
Robert and Arlene Rhoades
Sherry Riggan
Jim and Mary Rosema
Pete Samuels
Molly Schaller
Carol Seals
Sally Secor
Carl Shafer
Steve Shondell
Kelly Shrock
Julie Skinner
Margaret Slauter
Nancy Smith
Van and Margaret Smith
Casey Stanley
John Stanley
Kelly and Donna Stanley
David Stocker
Audrey V. Stratton
Charles and Claudia Sursa
Robert W. Swartz
Phillip Tevis
Shirley Thacker
Dave Ullrich
James Updike
Richard and Judy Valos
Karen Vincent
Annemarie Voss
Will Walls
Robert E. Walters
Lynette K. Waters-Whitesell
Don and Diane Weaver
Thomas Weidner
Douglas and Kathy White
Marilyn Williams
Tricia Davis Williams
Colby Wingate
Suzanne Wingate
Elizabeth Woodgett

Memorials:

Tiny Adams
Maraby Allardt
Mary Armstrong
Susan Alena Aul
Eugene Paul Beard

*YART at Muncie
ArtsWalk*



Marilyn Rose Beard Stellwag
 Bob Beasley
 James Lee Beeson
 Kevin Bergan
 Marlene Berner
 Anne Billings
 Matthew Thomas Blake
 Darl Bookout
 Pat Botts
 Homer Branscum
 Teresa Brengman
 Alyxandra Rose Brinkman
 Frank and Pat Brinkman
 Lucy Brown
 Bill Bruns
 Richard and Dorothy Burkhardt
 Becky Cashdollar
 Adam Cline
 Maude Marie Cliver Gifford
 David Coffman
 Michael Cox
 Paul and Clarice Davis
 Molly Day
 Scott DeVoe
 Jacquelynn (Jackie) Dillon
 Jay Dillon
 Larry Dollison
 Stephen Dowell
 John Mark Drown
 Nathan Lee Drown
 Lila Joan Edmundson
 Cheryl Fauquher
 Nancy Finan
 William Flannery
 Neal Fouch
 Robert Fraser
 David A. Galliher
 Carolyn Gilbert
 Alice Gillis
 Mabel Estella Grant Beard
 Connie Greer
 Howard Gregory
 Kurt Griffis
 Chester Groves
 Juliana Harris
 Sue Harris
 Larry Herker
 Rosalie (Linville) Hiatt
 John D. Hicks
 Greg Hill

Patsy Duncan Hittson
 Jon Hunter
 William Hunter
 Bradley S. Hutson
 Rudolph and Mary Jarabak
 Juvia I. Jean Koons
 Gerald (Jerry) E. Johnson
 Sara Elizabeth Jones Branscum
 Kathleen Kiefer Keil
 Sue Kent
 William K. Kerr
 Ray Kinder
 James and Violet King
 Mary Ann King
 Dr. F. Hugh Kirby
 Eric Krozcek
 Nancy Jean Lafferty
 Connie Laughlin
 Jim Laws
 Kip Laws
 John B. Lotz
 Ora Loveless
 Michael Malone
 Bob M. Mantock
 Philip Marcus
 Tom and Juanita McConnell
 Marilyn McCord
 Gaylean Joy McDowell
 Dave McGalliard
 Charles McPeek
 Greg Miller
 E. Bruce Moore
 Barbara Mueller
 Sherry Kay Munson
 Don and Darlene Murray
 Scott Mutzfeld
 Harold and Jean Nation
 John and Margaret Oesterle
 Oren Olinger
 Ellen Payne Osborn
 Russell and Elise Palm
 Paul Eugene (Gene) Partezana
 Bob and Diane Paske
 Mary Elizabeth Petry Beard
 Odsie Plymale
 Sam Reed
 Dolletta J. Reeves
 Paul and Marguerite Ressler
 Braden Reynolds
 Jan Richard

Brittany Rowlee
 John Rust
 Walter R. Rysz Jr.
 Bobby and Deloris Sangster
 Jerry L. Sarah
 Patricia Schaefer
 Anne Elizabeth Schell
 Dale Schell
 Tom Schnuck
 Howard and Judy Schroeder
 Pat Shaffer
 Margaret Ann Slauter
 Jim and Patsy Smith
 John and Jeanne Smith
 Jeanine Etchison Souders
 Larry V. Souders
 Jen Southerland
 Dylan Stafford
 Gordon A. Stellwag
 Robert Stratton
 Barbara Taylor
 Ronald W. Terry
 Drew Thurston
 Emma N. Tincher Beard
 Deborah Todd
 Jean Trent
 Fred C. Tucker III
 Rita Waechter
 Rex Waldo
 Eileen Walters
 Ben Grady Williams
 Gina Wilsford
 Robert Wyne
 Judith Zinzser
 Nancy Zirkle

Pets:

Angel Nation Brinkman
 Maggie Nation Brinkman
 Stella Nation Brinkman
 Bandit and Goldie White
 Max and Roxie
 Angus the Great Dane
 Millie
 Ollie



2025 staff of
The Community
Foundation



Staff

Marcy Minton

President & CEO

Kallie Sulanke

Chief Community Partner for Outreach & Donor Relations

Amanda Kavars

Chief Community Partner for Program & Nonprofit Relations

Carol Kosisko

Community Partner for Donor Relations

Molly Harty

Community Partner for Program & Nonprofit Relations

Trina Bowling

Finance Officer

Rachel Lunsford

Operations & Experiences Manager

Haylee Biddle

Outreach & Donor Relations Manager

Paige Brown

Program & Nonprofit Relations Manager

ACKNOWLEDGEMENTS

We would like to extend a special thank you to Molly Harty who retired from the Foundation in early 2026.



Roni Johnson, *President Emerita*
Stefan S. Anderson, *Chair Emeritus*
Wilbur R. Davis
Trent Dowling
Mark A. Ervin
Ronald K. Fauquher
Sara Shade Hamilton
Jeffrey R. Lang
John D. Littler
Carol E. Seals
Steven M. Smith
Charles V. Sursa
Marianne Vorhees



Edmund F. Ball
Jack E. Buckles
Oliver C. Bumb
Suzanne Gresham
David Sursa
Earl R. Williams

PHOTO CREDITS

Robbie Mehling
Matt Howell pg. 11

*Sunrise in
downtown Muncie*



Contact

**The Community Foundation of
Muncie & Delaware County, Inc.**

PO Box 807
Muncie, IN 47308

We are located at:
302 E. Jackson Street
Muncie, IN 47305

Phone:
765.747.7181

Website:
cfmdin.org





The Community Foundation
OF MUNCIE & DELAWARE COUNTY

CFNS

ACCREDITED
FOUNDATION