



FIS

**CONTRACTORS
AWARDS 2023**

WINNERS AND
FINALISTS

thefis.org



Looks like Techmania Science Center
Sounds like Ecophon

Architect: David Cígler

Product: Ecophon Solo™ Free-hanging acoustic panels

www.ecophon.com/uk

Tel: 01256 850977

Email: info@ecophon.co.uk

SOUNDS LIKE

Ecophon

SAINT-GOBAIN

FIS CONTRACTORS AWARDS 2023

This year's Contractors Awards Lunch, held at the Royal Lancaster Hotel in London on 8 June, once again celebrated the achievements of the brightest and best in interiors. Guests were also entertained by the guest speaker, impressionist and stand-up comedian Alistair McGowan.

CALL FOR ENTRIES

Entries are being sought for the 2024 FIS Contractors Awards. The award categories cover a wide range of disciplines and attract entries from some of the leading companies in the finishes and interiors sector. All FIS contractor members should consider entering as it is the quality of work which is judged, not the value or profile of the contract. Manufacturers may enter a contractor for a project where their product has been used.

WHY ENTER?

Winning an FIS award is an excellent way to raise your company's profile and gives you a competitive edge. An award provides visible and valuable recognition for your entire organisation.

If your company delivers first class interior solutions, then this is a perfect opportunity to be recognised for the quality of your work.

Winners and entrants receive substantial publicity across FIS publications and on the FIS website.

ENTRY FORMS

Deadline for entries is 31 October 2023 and the fee is £270 per entry.

Only FIS contractor members are eligible to enter.

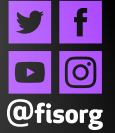
For more details call 0121 707 0077 or visit [thefis.org](https://www.thefis.org)

CATEGORY INFORMATION

The FIS Contractors Awards ceremony pays tribute to design and craftsmanship. The architect or interior designer of a winning project also receives an award. This year's awards included the following categories:

- Project of the Year
- Interior fit out
- Partitioning
- Ceilings
- Drylining
- Specialist joinery
- Steel-framed systems
- Plastering

REWARDING INDUSTRY'S BEST



FIS

CONTRACTORS AWARDS 2024

DEADLINE 31 OCTOBER 2023
• Apply online at thefis.org

The FIS contractors awards celebrate high levels of craftsmanship and best practice in the finishes and interiors sector. The awards are a platform for contractor members to demonstrate the quality and excellence of their work to clients and the wider sector.

#FISawards



"We received an email about the awards from FIS, so I thought we may as well enter. It was a bit last minute and it's been years since we last entered, but Exton Vineyard was a project we were honoured to be involved with. We're a very humble company - we don't blow our own trumpet or get involved with social media - but we will now!"
RICHARD SCEVITY, DIRECTOR,
NEW FOREST CEILINGS

JUDGES' COMMENTS

“As ever, all the entries have been of the highest quality. The differences in the projects, as far as the awards go, is minimal, with decimal points ultimately separating an FIS contractor receiving or not receiving an award. It really is as close as that.

As judges, we take our responsibilities very seriously as we fully understand the hard work and endeavour everyone has applied to the project they have entered for the awards process. We recognise the pride you feel in your work as that is fundamentally why you have entered your project in the first place. For that reason, winner or not, we would like to congratulate you all on such unbelievable work, evident in some shape or form in all the entries we viewed.

The past 12 months have again been increasingly challenging and uncertain for us all. However, FIS contractor members continue to produce excellent work against the increasing pressure of tight budgets and challenging time constraints. That characterises the spirit of FIS members, who consistently demonstrate the resolve to do a good job on time and within budget.

It has been a real pleasure for Colin and me to witness such outstanding and varied work. So thank you to everyone for the courtesy and valuable time you have generously extended to us on our visits.”

TONY PIERI AND COLIN HUNTER



**EASY TO DO
BUSINESS WITH.**
DIFFICULT TO
LIVE WITHOUT.

Our local branches offer an extensive range from all the leading suppliers you trust. But a business is nothing without its people and we're no different. Our friendly knowledgeable team are ready to support you with even the most complex of projects, while our dedicated in-house technical team are on hand to provide assistance with building requirements. Enjoy a hassle-free trading experience with a distributor that genuinely talks your language. Now that's an easy choice.

minsteronline.co.uk

MINSTER



**THERMAL
INSULATION**



DRY LINING



**FIRE
PROTECTION**



CEILINGS



PARTITIONS



ACOUSTICS



ROOFING



**EXTERNAL
FAÇADES**



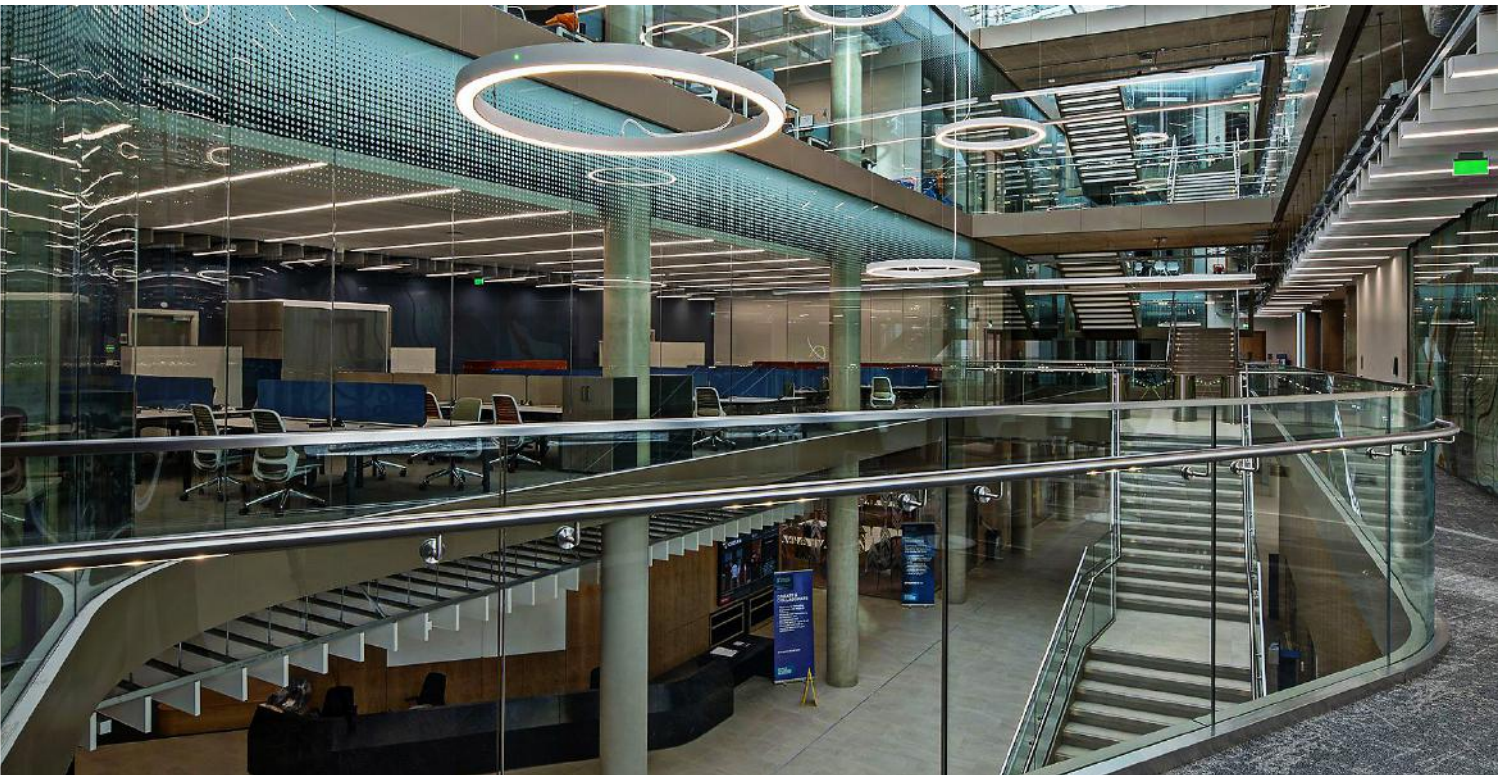
FLOORING



PROJECT OF THE YEAR

Indeqlàs

Advanced Research Centre, University of Glasgow



Architect Robert Fry, International and Executive Director of Aukett Swanke Group plc, was the guest judge for the 2023 FIS Contractors Awards, selecting the overall Project of the Year from the winning contracts across all categories.

The very high quality of the fourteen award category winners made the selection of a single project for the Project of the Year Award a very challenging proposition given the excellence demonstrated by talented designers, a multitude of trades and skillsets collectively brought to bear with passion by our industry on such a huge variety of great projects.

Driven by a brief to achieve a collaborative environment to stimulate human connectivity for the University's academic and research community, this beautifully crafted building by architect HOK International has exploited the daylight potential of the site in a building form that has allowed Indeqlàs to create a spectacular glazed atrium and a series of high-performance function rooms with their range of high-quality products and systems.

Executed to a very high level of workmanship and detail, using efficient and economic processes including modular secondary steelwork and large format floor to slab glass panels, available daylight is allowed to penetrate the very heart of the atrium to promote the wellbeing of all building users.



Robert Fry

BA(Hons) DipArch MA RIBA

With over 40 years of experience in the property and construction sector, Robert is a multi-skilled architect and manager combining leadership and creative thinking with business acumen developed from designing and delivering projects large and small in many countries.

CATEGORY
SPONSOR



See page 11 for more details

indeqlas.co.uk



PROUD SPONSORS
OF THE
INTERIOR FIT OUT
CATEGORY

WE KNOW

INTERIORS

INSULATION | DRYLINING | CEILINGS | PARTITIONING

DEMOUNTABLE PARTITIONING | OPERABLE WALLS | WASHROOMS | FIRE PROTECTION
LIGHTING | RAFTS & BAFFLES | TILE & GRID SUSPENSION SYSTEMS | CANOPY
WALL COVERINGS | FLOOR COVERINGS | ACCESS PANELS | RAISED ACCESS FLOORING

WORKING IN **PARTNERSHIP** WITH YOU

Our interiors specialists provide professional advice to find you a solution that will inspire and perform, whatever your budget, size or scope. Working closely with all of the leading manufacturers and in partnership with you, we strive to bring the complete interior solution that not only meets but exceeds your expectations.

Contact our specialist team to discuss your requirements.

sigdistribution.co.uk | 0114 285 6300



**SCAN ME
TO FIND OUT MORE**





INTERIOR FIT OUT (SMALL CONTRACTS) **Tapper Interiors**



CONTRACT
JCT 600 Ferrari, Leeds

ARCHITECT
Axis 3

Tapper's work on this new car dealership and pre-delivery inspection centre included drylining, partitions, ceilings, doors and frames, carpentry and hygienic cladding.

Ferrari dealerships have intricate details and lighting requirements, which meant ceiling height challenges had to be overcome. Stretch ceilings were used to create a suitable lighting level above the cars.

Komfort single-glazed screens were installed in the offices, with fire-rated screens overlooking the workshop to enable customers to see the cars being worked on.

Expandable XP doorframes were used to cope with the many different wall thicknesses and different fire ratings with laminate faced doors.

The judges said:
"Overall, a high-quality conventional fit-out that effortlessly compliments the nature of a high-performance car dealership."

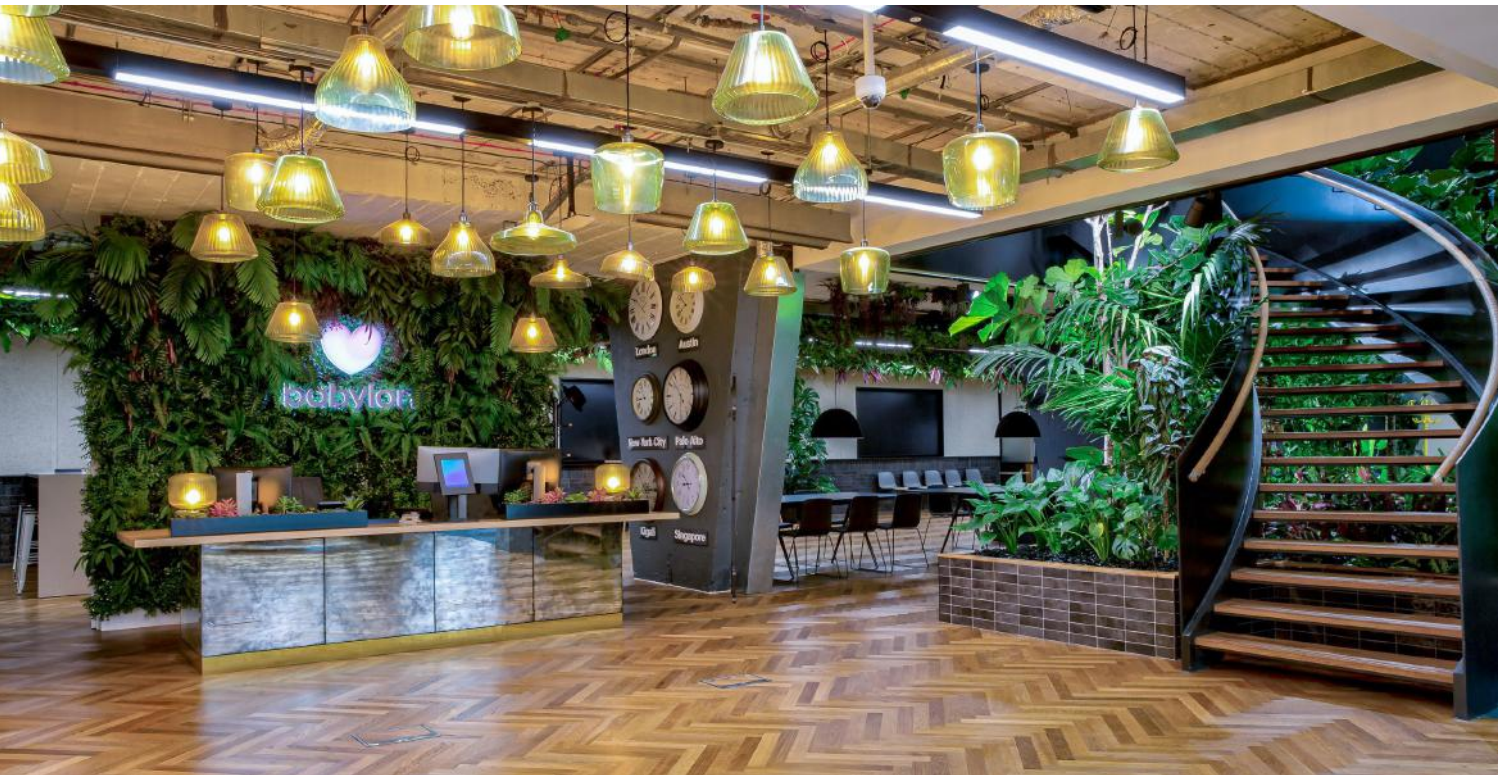
CATEGORY
SPONSOR



tapperinteriors.co.uk



INTERIOR FIT OUT (LARGE CONTRACTS) **Domino Commercial Interiors**



CONTRACT
**1 Knightsbridge Green,
London**

Domino Interiors helped deliver a refurbished workplace, designed to offer a positive and productive environment for healthcare provider Babylon Group that would encourage post-pandemic hybrid working.

The full scope of works for Domino included fit-out and refurbishment, M&E, data services, partitions, ceilings, decorations, floorcoverings and specialist joinery. The refurbishment of the two floors began with removing the existing office layout and opening up the first floor to install a circular staircase between the floors.

New flooring was laid and the original glazed partitioning reused, along with new matching partitioning. The space includes optional breakout areas, a wellness area, faith rooms, a gym and quiet spaces.

Of the spaces created, the judges said “they were formed to a high standard to provide a workplace that envelops the team in a welcoming homely atmosphere.”

CATEGORY
SPONSOR



domino-online.co.uk

INTERIOR FIT OUT

SHORTLISTED



INTERIOR FIT OUT

SHORTLISTED



DSP (INTERIORS)
CONTRACT
SureScreen Diagnostics,
Nottinghamshire

EPD
INSULATION GROUP

01733 202996

Distribution to the
Independent Builders Merchants,
Drylining and Screeding Industries

Finmere Park, Southgate Way, Orton Southgate, PE2 6YG

www.epdinsulationgroup.co.uk



Portview Fit-Out
CONTRACT
Nike Flagship,
Westfield London



PARTITIONING (SMALL CONTRACTS) **Optima**



CONTRACT
Mazars, London

ARCHITECT
HLW International

Sustainability was the key word on this refurbishment project for financial consultancy Mazars' new office in London. The client's wish was to reuse as much of the existing Optima glazed partitioning as possible.

Optima reused 60% of the existing glass partitioning systems, and during the takedown, around 60% of the framework was recycled and 92% of the waste from site was also recycled.

The firm carefully demounted the existing glazed partitions and stored these on site. After installing reuseable components, the remaining aluminium sections were returned to Optima for recycling.

The judges were suitably impressed: "On inspection, it is hard to see that the high-quality installation is formed from preloved elements. Overall, an excellent finish achieved by Optima."

CATEGORY
SPONSOR



- ✓ REDUCED ENERGY CONSUMPTION
- ✓ LOWER SCOPE 2 EMISSIONS
- ✓ REDUCED WASTE
- ✓ LESS MATERIAL TO TRANSPORT
- ✓ LOWER SCOPE 3 EMISSIONS
- ✓ LOWER EMBODIED CARBON



Since the merger with façade and exterior profile leader Wemico, Protektor Group boasts one of the UK's largest portfolios of in-house manufactured exterior and interior drylining profiles.

Our passion for innovation, commitment to sustainability and continuous push for operational excellence set us apart from the competition.

Access our full range of products and services either online at profilestore.co.uk or contact us at the details below.

Tel: 01562 515200

Email: sales@protektor.co.uk

www.protektor.co.uk

Protektor Group UK Limited,
Protektor House, Edwin Avenue,
Hoo Farm Estate,
Kidderminster, Worcestershire,
England, DY11 7RA





PARTITIONING (LARGE CONTRACTS) **Indeqlås**



CONTRACT
**Advanced Research
Centre, University of
Glasgow**

ARCHITECT
HOK International

Indeqlås designed and constructed an internal glazed atrium, as well as creating high-performance rooms in the university's Advanced Research Centre (ARC) building.

HOK's design called for significant amounts of glass to promote connectivity and collaboration. By using a range of solutions – including modular secondary steel in the atrium and facilitating the crane install of 4.3m high glass panels to the atrium on levels one, two and three – Indeqlås ensured a high standard of workmanship.

Its work included smoke and acoustic-rated atrium glazing forming a 4.4m high protective barrier; single and double-glazed screens and framed glass doors; access control; aluminium panelling; and a large scale, bespoke artwork package.

The judges commented: "The stunning finished project highlights the architect's vision of all occupants of the building having access to daylight throughout the day. The expertise required to install the atrium was particularly impressive. Overall, an excellent standard of workmanship was achieved."

CATEGORY
SPONSOR





PARTITIONING - OPERABLE WALLS

Style Moveable Partition Specialists



CONTRACT
Project Mosaic, Reckitt Benckiser, Berkshire

ARCHITECT
Tetris JLL

Style worked with the architect and main contractor to create a flexible space for health and wellbeing products manufacturer Reckitt Benckiser.

This also marked the 300th installation of a Skyfold vertically rising folding wall in the UK market. The firm installed four Skyfolds in the main boardroom, meeting rooms and lounge areas, each offering 59dB acoustic rating and housed in a ceiling cavity when not in use.

The walls were finished in fabric to complement the interior design of the building. In addition to the Skyfolds, Style installed a Dorma Huppe Variflex semi-automatic moveable wall in the ground-floor studio, also with a 59dB acoustic rating but this time with a laminate finish.

The judges enthused: "The overall effect is simply stunning, particularly when all the walls are opened to magically transform the space into one large open plan area."

CATEGORY SPONSOR



style-partitions.co.uk

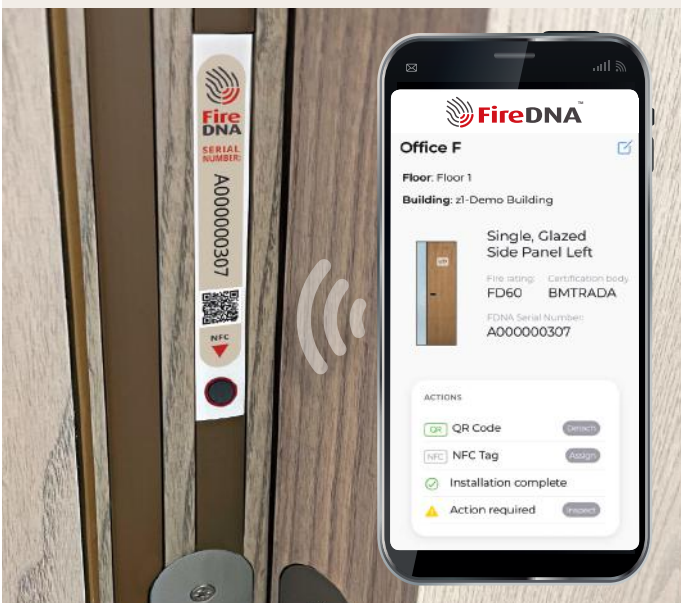
PARTITIONING

SHORTLISTED

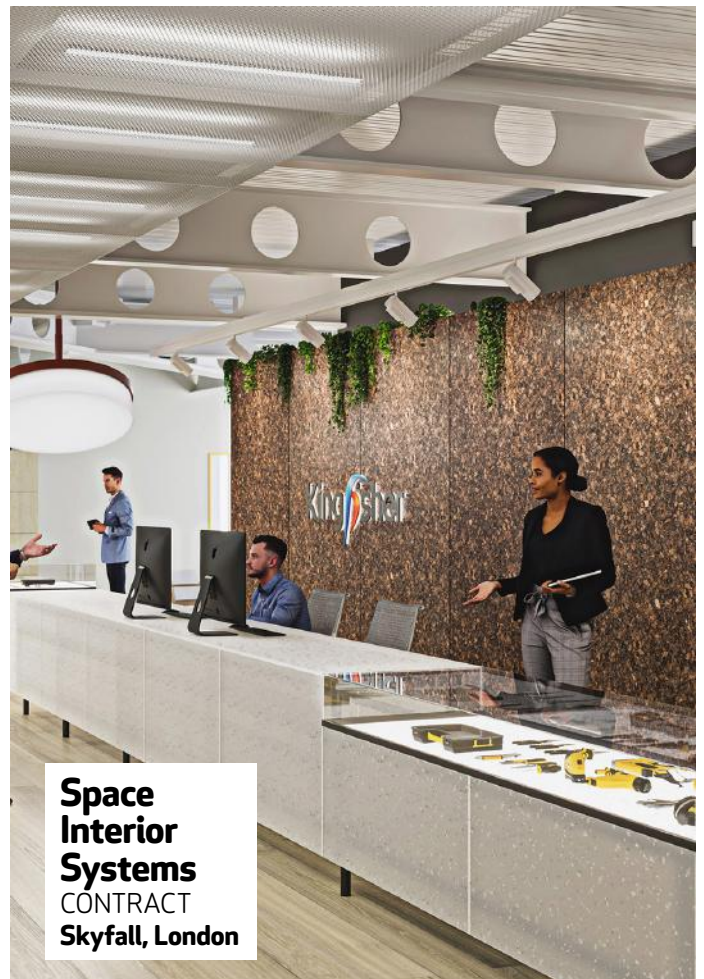


iWall
CONTRACT
Umdasch,
Abingdon

 **FireDNA**™
Monitoring Passive Fire Products



T: 01403 597590
E: info@fire-dna.com
www.fire-dna.com



Space
Interior
Systems
CONTRACT
Skyfall, London

PARTITIONING

SHORTLISTED



**Architectural
Wallsz
(International)**
CONTRACT
Twitter Piccadilly
Circus, London

Save with TERRIX Paint and Plaster products.

Thanks to unique consistency and formulation, TERRIX products save time, hassle and money on build projects. Here are two great examples from the range:

TERRIX ONE COAT IP-ST-P INTERIOR PAINT

Perfect one coat finish, no mist coat required, easy spot repairs with no flash.
High productivity up to 1,000m²/person /day.



TERRIX PL-SX-S SPRAY PLASTER

Single application, ready mixed, suitable for British Gypsum, Knauf and Siniat boards.
High productivity up to 500m²/person /day.



For commercial, new build, and restoration projects
terrproducts.com

Proud UK distributor:




**Space Interior
Systems**
CONTRACT
Jenner & Block,
London, Westfield
London



DRYLINING - COMMERCIAL

Phoenix Drywall (UK)



CONTRACT
**Faculty of Social Sciences,
Sheffield**

ARCHITECT
HLM

This £65m Social Sciences Hub project for the University of Sheffield set out to provide bespoke accommodation for the departments of sociological studies, economics and politics, alongside shared facilities.

The construction works consisted of the design and development of full-height stud walls, curved on plan to create an ebb and flow appearance to the building – a reference to the site’s former life as a reservoir.

The façade features staggered glass planes to reflect the multifaceted nature of the social sciences, with Phoenix providing all masonry, SFS, drywall, suspended ceiling and acoustic treatment packages on the scheme.

The judges applauded the work: “Phoenix’s attention to detail, proactive value-added solution thinking and intensive design input resulted in a high-quality finish that not only looked impressive but performed to the highest level. Well done, Phoenix, excellent work.”

CATEGORY
SPONSOR





Proud sponsors of the FIS Awards 2023

We are proud to sponsor the Drylining Residential Category at this year's FIS Awards.

We believe in building better homes and leaving a positive legacy for the future. For over 100 years, we've been leading the way in drylining and plastering solutions, and we're proud to support those who are doing the same.

**We care about building better
for people and the planet.**
[british-gypsum.com](https://www.british-gypsum.com)



DRYLINING - RESIDENTIAL

Measom Dryline



CONTRACT
**Knightsbridge Gardens,
London**

ARCHITECT
Fletcher Priest

For this high-end residential project, Measom delivered 29 apartments, three cores and three stairways and was responsible for the drylining and ceilings throughout.

The firm constructed the lighting trough details and delivered recessed curtain tracks in the apartments and GRG cornices in all the residential and reception areas.

Over a series of angled fire-rated bulkheads across the project, the internal apartments meet the windows of the heritage façade outside. It was imperative these bulkheads were constructed precisely to comply with the required fire specification and the aesthetic requirements. In some of the apartments, additional metalwork was also needed to support feature doors.

“The overall finish is of the highest standard,” commented the judges. “This is a high-quality installation, well designed and delivered by Measom.”

CATEGORY
SPONSOR

British Gypsum
SAINT-GOBAIN

measom.co.uk

KEEPING YOU BUILDING

When you're against the clock,
and the pressure's on, you
don't need any hold-ups.
What you do need is a
supplier you can trust,
and service you can
count on. Simple.

CELEBRATING OVER

4 YEARS

**COMPLETELY
CUSTOMER
FOCUSED**

To keep up to date with
the latest CCF news,
visit: ccfltd.co.uk



Valko Construction
CONTRACT
**Old War Office,
London**



OCL Facades
CONTRACT
**West End Gate,
London**

DRYLINING

SHORTLISTED



**Proline
Internals**
CONTRACT
**The Hub at DIRFT,
Northampton**

Meet the new **Matrix-Mesh** ceiling tiles from



Add contemporary aesthetics to interiors with QIC Matrix-Mesh ceiling tiles. With a choice of almost endless different colours, mesh patterns, and various edge details, these metal mesh ceiling tiles create spaces that harmoniously blend form and function, enriching lives through innovative design solutions. Made from galvanised steel, powder coated and painted, Matrix-Mesh ceiling tiles are easily installed and allow quick easy access to the ceiling void above.

5 Standard MESH patterns Ex-Stock

- **Aptus**
- **Finity**
- **Nova**
- **Scape**
- **VEXA**



QicTrims Ltd - Radclive Road, Gawcott, Bucks, MK18 4BL (UK)
T: +44(0)1280 818950 E: sales@qic-trims.com

www.qic-trims.com





CEILING (SMALL CONTRACTS) **ARM Concepts**



CONTRACT
**1-2 Finsbury Square,
London**

ARCHITECT
**General Practice
Architecture + Design**

ARM assisted on the ceilings design for this office building, working with architect GPAD and SAS to meet the initial design concept and incorporate alterations.

The concept was to create a series of individual rafts using TCA0637 upstand trims and system 330 ceiling tiles, interconnected using a mesh panel of system 300 and 320 tiles. The mesh panels acted as a border to the lowered rafts. A subgrid was set out with a ceiling grid installed over each raft, which stayed connected to retain structural integrity until all the ceiling sections were installed.

ARM then formed the rafts using 100mm deep TCA0637 upstand trims connected to the subgrid, along with TCA1182 C profiles to divide each bay into two equal sections. Almost 100 rafts were constructed over three floors.

ARM also installed ceiling trims to the perimeter of each raft to support the mesh panels, allow the subgrid to be cut out and the mesh panels laid in position.

The judges summed up the achievement: "ARM has demonstrated high-quality workmanship in producing an L-shaped metal ceiling consisting of independent bays of tiles framed with a black perimeter mesh panel over three floors."

CATEGORY
SPONSOR



armconcepts.co.uk

We put one thing above all, you



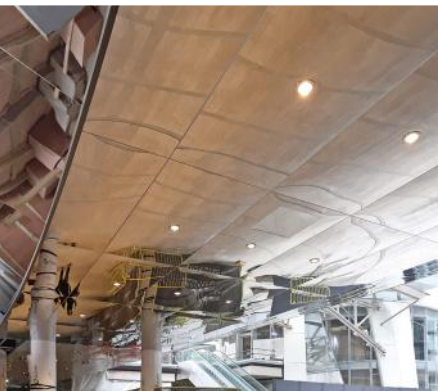
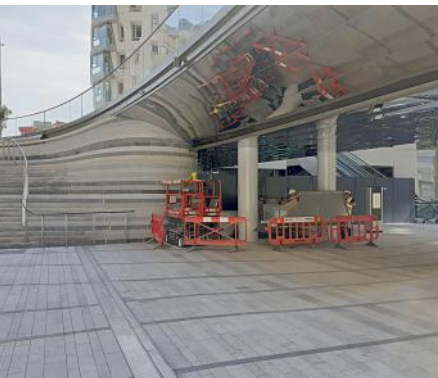
The UK's market leader in complete ceiling solutions. Innovative new products and UK-based support for architects, distributors and contractors, from specification to installation. A partner you can rely on, at every stage of your project. We put one thing above all, you.

 **zentia** Above all, you

zentia.com



CEILING (LARGE CONTRACTS) **Integra Contracts**



CONTRACT
**Battersea Power Station,
Halo Bridge and Turbine
Hall B, London**

ARCHITECT
WilkinsonEyre

CATEGORY
SPONSOR



The Halo Bridge project involved the installation of cladding to the undercroft of the road bridge by Battersea Power Station, finished in mirror polished stainless steel panels on a bespoke support grid.

Angled in elevation and curved on plan, the acoustic sprung-loaded suspension system allows the panels to move and deflect with the weight of traffic crossing above. The judges hailed it as “a shining example of innovation”.

For Turbine Hall B, the brief was to produce a system that was functional and demountable, would form a pressure-sealed void incorporating a smoke extraction system and recreate the look of the original concrete structure acceptable to English Heritage.

Integra designed and built ceiling panels to replicate the original structure, using a GRG-clad metal support grid and curved wall abutment panels. A lightweight aluminium frame was designed to support the GRG panels. This reduced the weight of each module by 30kg, enabling a subgrid frame to be used unsupported between the existing trusses.

“The result is a spectacular ceiling, cranked to an apex, with concave wall abutment panels designed to funnel smoke to the extractors,” said the judges.

CEILING

SHORTLISTED



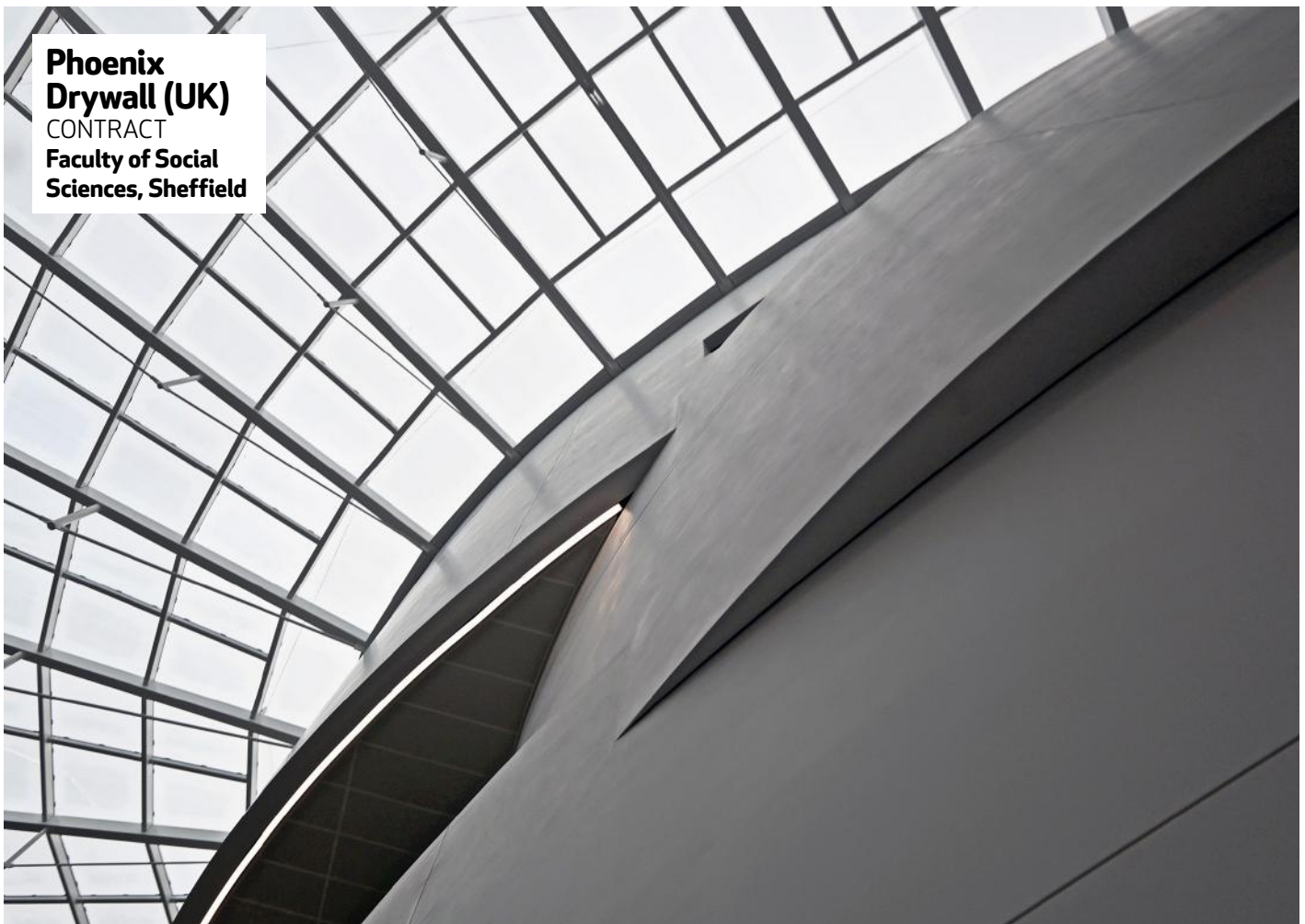
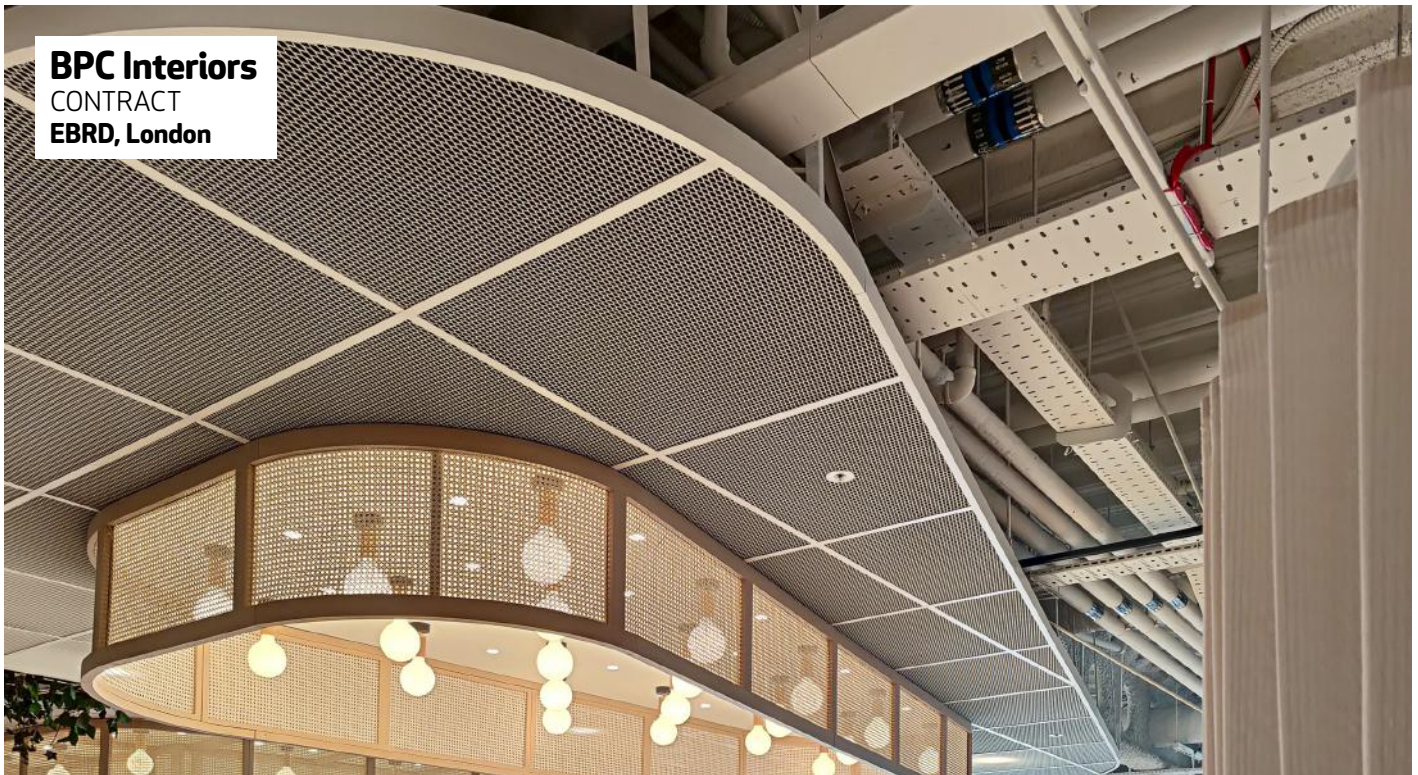
Space Interior Systems
CONTRACT
Luton Direct Air to Rail Transit Project



Space Interior Systems
CONTRACT
Jenner & Block, London

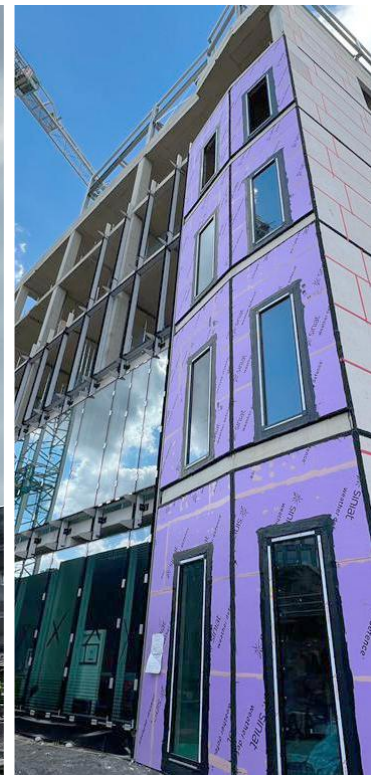
CEILINGS

SHORTLISTED





STEEL FRAMED SYSTEMS (SMALL CONTRACTS) **Drywall Contracts (DCL)**



CONTRACT
**Molecular Science,
University of Birmingham**

ARCHITECT
Associated Architects

DCL delivered the £760,000 SFS works at Birmingham University's flagship Molecular Sciences building, providing infill and framing, boarding, EPDM and insulation.

The SFS included EOS 'fly through' and conventional 'stick build' systems. The six-storey building stands at 32m – unusually high for an installation – and the project also had a challenging programme, with trades working at all elevations simultaneously.

DCL installed the EOS steel frame system, together with Weather Defence and Versaroc boarding.

"This was one of the highest installations of a steel-framed system," noted the judges, "which necessitated one of the highest uses of mobile elevating work platforms you can get, and obviously taxed the mettle of the installers." They were in no doubt, however: "The completed project was installed to the highest standard."

CATEGORY
SPONSOR



drywallcontracts.co.uk



STEEL FRAMED SYSTEMS (LARGE CONTRACTS) **Drywall Contracts (DCL)**



CONTRACT
Kenilworth School and Sixth Form Relocation Project, Warwickshire

ARCHITECT
Glancy Nicholls Architects

The project, delivered on behalf of Kenilworth Multi Academy Trust and Warwick District Council, enabled Kenilworth School and Sixth Form to relocate from its two existing sites to a new three-storey campus in Kenilworth.

The project was a challenge for DCL for several reasons. Most significant was the complexity of the parapets throughout the roof areas, which were designed to conceal the plant needed to run the school while maintaining aesthetics and planning requirements.

The other challenge was that the project was swapped from a brick finish to fully rendered (12,000m²) due to value engineering. This meant installation had to be to tighter tolerances than set out in FIS guidance to ensure these large elevations had no render deviations.

“Complex parapet details were required to conceal the plant on the roof superstructure,” commented the judges. “DCL designed and installed these works to the highest standard.”

CATEGORY
SPONSOR



drywallcontracts.co.uk

TWO HIGH QUALITY SHEATHING BOARDS FOR HIGH RISE BUILDINGS

A2 Versapanel® cement bonded particle board

- BDA Agrément
BAW-19-093-P-A-UK
- A2-s1,d0 reaction to fire in accordance with EN 13501-1
- CE & UKCA assessed to EN 13986:2004 + A1:2015
- Offers exceptional mechanical performance
- Highly moisture tolerant
- Helps improve the air tightness of façades
- Relative high density for excellent acoustic performance

BDA Agrément
BAW-19-093-P-A-UK

Versaroc® MPA1 fibre cement sheathing board

- BDA Agrément
BAW-20-154-P-A-UK
- A1 (Non-Combustible) reaction to fire in accordance with EN 13501-1
- CE & UKCA assessed to EN 12467:2012 + A2:2018
- Highly moisture tolerant
- Helps improve the air tightness of façades
- Relative high density for excellent acoustic performance

BDA Agrément
BAW-20-154-P-A-UK

Fire resistance of built systems
tested to EN 1364-1
(ask for details)

A2 Versapanel® & Versaroc® MPA1
can be supplied in pre-fabricated kits
to reduce site works

STEEL FRAMED SYSTEMS

SHORTLISTED

OCL Drylining
CONTRACT
**Chippenham
Gardens, London**



MUFFLE
MAKES BUYING
ACOUSTIC PRODUCTS
EASY

- Acoustic Advice
- Clear Pricing
- Fast Shipping
- Trade Accounts

UK's LEADING ONLINE ACOUSTICS STORE

Ecophon SAINT-GOBAIN | FLUFFO | AUTEX

muffle | BAUX | BUZZI SPACE

Veitchi Interiors
CONTRACT
**Kibble Heights,
Glasgow**

www.muffle.co.uk

STEEL FRAMED SYSTEMS

SHORTLISTED



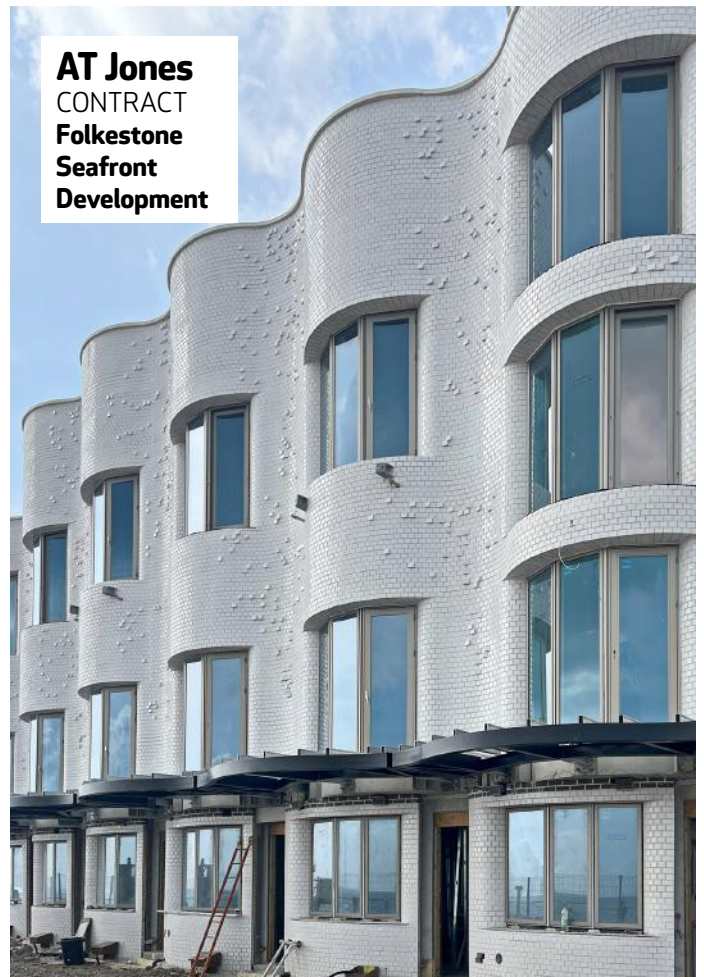
**Bespoke
Construction
Services**
CONTRACT
The Mews, Solihull

PULSA 65: Get it at a distributor near you

**USE NAILS
RANGING
FROM
15-65MM**

**ONE TOOL
FOR DEFLECTION
AND TRACK**

« Scan
to watch the tool
in action



AT Jones
CONTRACT
Folkestone
Seafront
Development



PLASTERING - HERITAGE

Locker & Riley (Fibrous Plastering)



CONTRACT
KOKO, London

Locker & Riley undertook the plaster restoration at the recent redevelopment of London music venue KOKO, which originally opened as a theatre in Camden in 1900.

Led by Archer Humphries Architects, the project involved the conjoining of three grade II-listed buildings, which involved working with English Heritage, the Victorian Society and Camden Council Conservation.

Locker & Riley provided initial conservation advice and guidance – the ceiling was found to be fragile and requiring full restoration and strengthening, with localised repairs. It then restored the main auditorium ceiling decorative plasterwork and replicated many plaster elements in the entrance hall, ticketing hall and numerous lobbies and bars.

The judges fully appreciated the workmanship involved: “Locker & Riley used their expertise to present a building that looks as glorious as the day it opened.”

CATEGORY
SPONSOR



lockerandriley.com

Interior Solutions
Specialists.

We go further.

Ceilings | Drywall | Finishes | Flooring
Partitioning | Passive Fire Protection

From ceilings, drywall and partitioning through to flooring, finishes and fire protection, you can rely on Nevill Long for all the solutions, specialist support and reliable service you need for your interiors projects.

Our nationwide branches stock an extensive range from market leading brands and our expert teams work closely with you at every step.



PLASTERING - FIBROUS AND GRG

Fine Art Mouldings



CONTRACT
**The Peninsula London,
1 Grosvenor Place,
London**

ARCHITECT
Hopkins Architects

Fine Art Mouldings worked on the design, creation and installation of a statement ceiling in the ballroom of new luxury hotel The Peninsula London.

The ceiling was designed using sketches, drawings and 3D renders. Once approved, the designs were handcrafted and more than 2,000 components were then transported and fitted on site. The intricate design incorporated air vents, speakers and light components, while also having to maintain an elegant aesthetic.

Some parts of the ceiling were crafted using Jesmonite instead of traditional plaster to give increased durability in places used as access hatches. The entire 247m² ceiling comprised 597 individual coffers and was completed in three months.

The judges were in no doubt of the quality: "All work was executed to the highest possible standard and carried out with absolute precision and meticulous attention to detail."

CATEGORY
SPONSOR

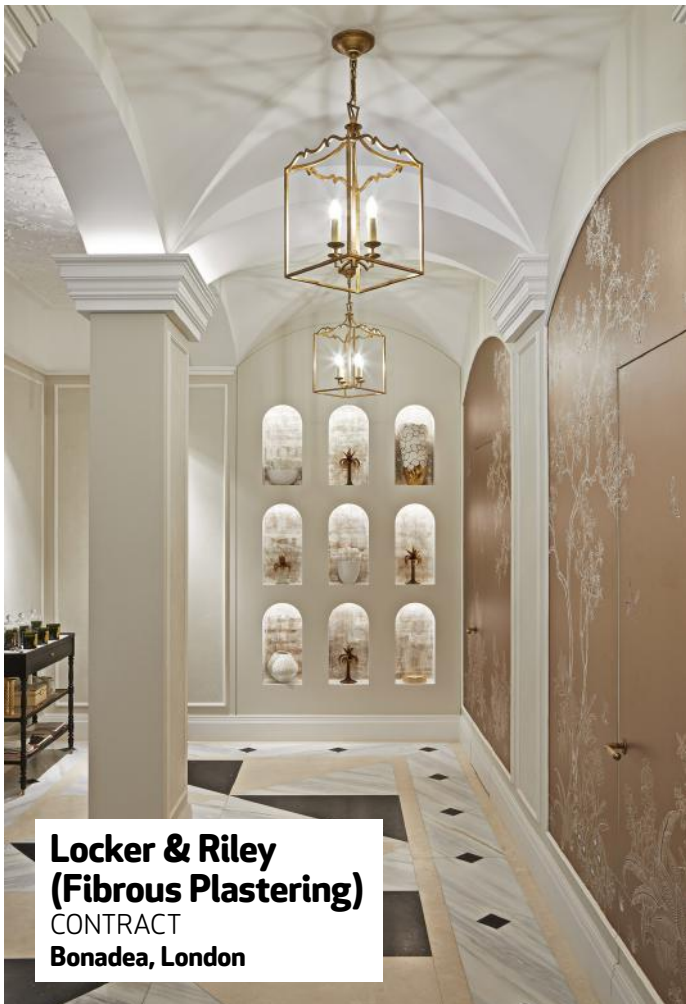


fineartmouldings.co.uk

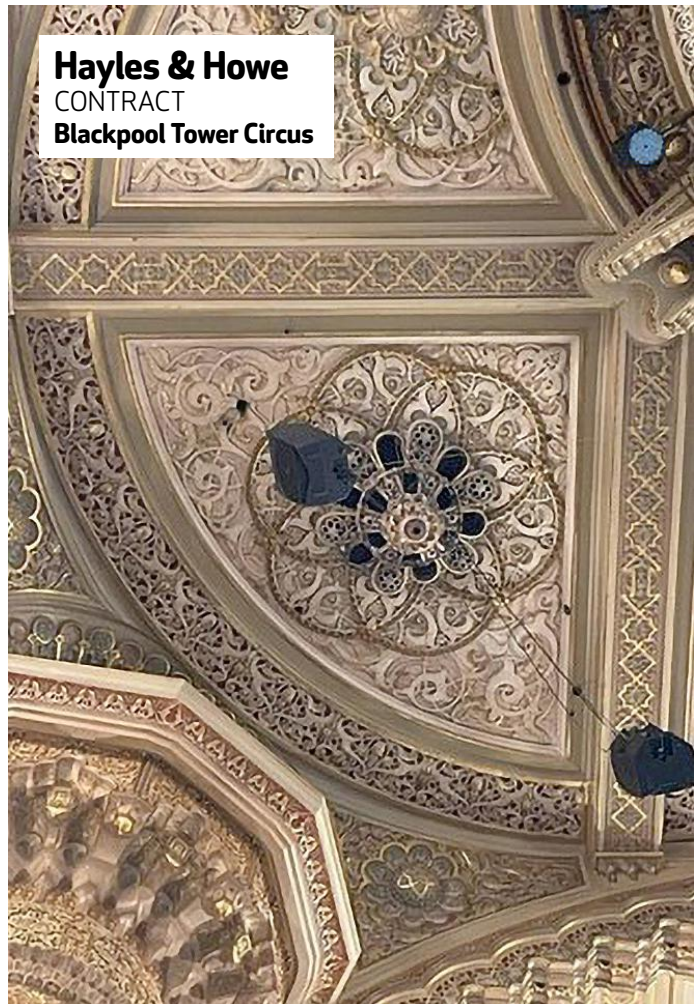
PLASTERING
SHORTLISTED



Simplicity Specialist Finishes
CONTRACT
Bank Street,
London



Locker & Riley (Fibrous Plastering)
CONTRACT
Bonadea, London



Hayles & Howe
CONTRACT
Blackpool Tower Circus



SPECIALIST JOINERY Veitchi Interiors



CONTRACT
**Boclair Academy,
Scotland**

Veitchi Interiors installed a wide range of joinery elements in the new Boclair Academy in Bearsden, delivering all drylining and partitions, joinery, doors and doorsets, ironmongery and acoustic panelling.

The academy is built within the grounds of the previous school and provides state-of-the-art facilities for more than 1,000 pupils. The £40m two-storey building comprises a large entrance atrium, flexible teaching zones, performance spaces and dining areas.

Careful consideration was given to providing an environment that encouraged collaborative opportunities between departments and pupils. The site's terrain presented the biggest challenge, as it meant a 4m level change across the footprint of the building.

The judges applauded Veitchi's achievement: "From the seven types of door sets to the high-level acoustic panelling in the gym and theatre, it is evident they have been expertly installed. This is further endorsed by the panelling to the staircases – the mitred edges on the panels were a result of first-class workmanship."

CATEGORY
SPONSOR
**SPEC
FINISH**

veitchi.com/veitchi-interiors

SPECIALIST JOINERY

SHORTLISTED



**Bespoke
Construction
Services**
CONTRACT
Derby Triangle





FORZA
FIRESCREENS





FORZA
FIRE & SECURITY DOORSETS





FORZA
VENEER PANELS





IMOLA
TIMBER PARTITION





FORZA
DOORS & FRAMES

WWW.FORZA-DOORS.COM

TEL: 01403 711126

EMAIL: INFO@FORZA-DOORS.COM

FIS

FINISHES & INTERIORS SECTOR

FIS

Olton Bridge
245 Warwick Road
Solihull
West Midlands
B92 7AH

+44(0)121 707 0077
info@thefis.org

thefis.org