



# 2023 BRUNSWICK COUNTY PARADE OF HOMES

Showcasing  
NEW HOMES &  
RENOVATIONS

Cover Featuring

## A NEW DIVISION

FOR CUSTOM BUILDING  
IN BRUNSWICK

BRADDOCK BUILT

CUSTOM HOMES



OCTOBER 20-22 & 27-29 | 12-5PM  
FREE ADMISSION | VIRTUAL & IN PERSON

Calabash | Sunset Beach | Ocean Isle Beach | Holden Beach | Bolivia | Oak Island | Southport | Winnabow | Leland



*Parade of Homes Diamond Award Winner*



SEA  
BREEZE

CUSTOM BUILDERS

CREATIVITY  
CRAFTSMANSHIP  
CLIENT SATISFACTION

(910) 880-8888

[info@seabreezecustomhomebuilders.com](mailto:info@seabreezecustomhomebuilders.com)

# WELCOME TO THE 21ST ANNUAL BRUNSWICK COUNTY PARADE OF HOMES



As a local custom builder and the current President of the Brunswick County Home Builders Association (BCHBA), I am proud to welcome you to the 2023 Brunswick County Parade of Homes. The Parade of Homes has become a tradition in Brunswick County since its inception in 2003. This Parade has proven to be of great benefit to the local economy. Many of our Parade attendees have gone from being visitors to the area to residents of one of the fastest growing counties in the southeast.

As you view our Parade entries, you will notice various levels of access for visiting them. In addition to the 30 new homes open to the public, we have seven new homes and seven renovations available by virtual tour or appointment only. All of our Parade entries are highlighted on [brunswickparadeofhomes.com](http://brunswickparadeofhomes.com) and include both photos and video tours. These virtual tours will enable guests to enjoy visiting our homes from anywhere and allow the homes to be viewed long after the event is over. Take all the time you need to review our entries and share the latest architectural trends and design ideas with family and friends. We also encourage you to contact the builders directly with any questions about their homes.

The BCHBA is sincerely appreciative of the contributions and continued efforts of our membership, committees, local vendors, subcontractors, and all others who choose to support this program. Please show your support to these companies and organizations that have provided significantly to our industry and the local economy.

Thank you for your participation in the 2023 Parade of Homes! We look forward to seeing you during the event – and hope you find the home of your dreams!



**PROVIDING PROPANE GAS TO BEAUTIFUL BRUNSWICK COUNTY SINCE 1925**

*[rdwhiteandsons.com](http://rdwhiteandsons.com) • (910)754-6415 • 4737 Main Street Shallotte, NC*



# J&K Home

■■■■ FURNISHINGS

*Make Your Home The Perfect Place, Trust J&K*

TALENTED, EXPERIENCED INTERIOR DESIGNERS  
WHO WILL EXECUTE YOUR VISION

Coastal Carolina's Leading Furniture and Design Center for Over 26 Years.







## A LOCAL HOME FURNISHINGS STORE



A CUSTOM HOME FURNISHINGS STORE WITH LOCATIONS ALONG THE CAROLINA COAST.  
OFFERING THE LARGEST SELECTION OF HIGH QUALITY NAME BRAND FURNITURE,  
MATTRESSES AND A FULL INTERIOR DESIGN STAFF OFFERING IN HOME CONSULTATIONS.

### Fall Annual Home & Mattress Sale

Save 30% - 60% Storewide  
Custom Orders Produced In As Little As 30 Days  
Choose From 5,000 Fabrics & Finishes  
Plus 0% Interest For 5 Years

1244 Hwy 17 N. - Little River - 843-249-1882

802 36th Ave South - North Myrtle Beach - 843-361-1616

Bassett Design Center - 12059 Hwy 17 Bypass - Murrells Inlet - 843-649-0008

2225 Hwy 9 E. - Longs - 843-390-9075

1080 Oak Forest Ln. - Myrtle Beach - 843-449-1500 - **Open Sunday**

Bassett Design Center - 1100 Oak Forest Ln. - Myrtle Beach - 843-839-2220 - **Open Sunday**

600 Long Point Rd. - Mount Pleasant - Belle Hall Shopping Center - 843-800-4015 - **Open Sunday**

HOURS of OPERATION: Monday-Saturday 9AM - 6PM  
Myrtle Beach - Mt. Pleasant locations Open Sunday 12PM - 5PM

[jkhomefurnishings.com](http://jkhomefurnishings.com) | [mattresszzzs.com](http://mattresszzzs.com)



FIND US ON SOCIAL







*about our*  
**COVER IMAGE**

Our cover image features a custom home recently finished by Ernest G. Crews Construction, coordinated by Cathy Brown. A new partnership has begun between Cathy and Betsy Braddock, creating Braddock Built Custom Homes. Read more on page 16.

 2023 BRUNSWICK COUNTY  
**PARADE OF HOMES**

**PUBLISHER**

Kenzi Weber

**EDITORS**

Tracey Tew  
Cathy Six

**DESIGN**

Hannah Isenhour

**ADVERTISING**

Meg Meyer

**PHOTOGRAPHY**

Phil Weber

**FOLLOW BRUNSWICK COUNTY PARADE OF HOMES**



FACEBOOK.COM/BRUNSWICKPARADEOFHOMES



@BRUNSCOPARADEOFHOMES



BRUNSWICK COUNTY PARADE OF HOMES

**PUBLISHED IN PARTNERSHIP WITH**

Brunswick County Home Builders Association  
Vivid Digital Media  
Walton Press

© VIVID DIGITAL MEDIA Information contained in this published work has been submitted by individual builder members of the Brunswick County Home Builders Association or obtained by Vivid Digital Media (Vivid) by sources believed to be reliable. However, neither Vivid Digital Media or its authors or contributors guarantees the accuracy or completeness of information published herein. Neither Vivid Digital Media nor its authors shall be responsible for errors, omissions, or claims for damages arising out of use of information contained in this publication. Vivid has made every effort to ensure that real estate pricing is accurate as of the date of publishing, but pricing and availability of advertised real estate is, by nature, subject to change. All rights are reserved. All images contained in this publication are the property of Vivid Digital Media and its contributors. No part of this publication may be reproduced, stored in a retrieval system, transmitted by any means, or photocopied without written permission from the publisher.





## Build the home of your dreams.

Whether you're building from the ground up or renovating a classic structure, our flexible, permanent financing options can make that dream home a reality.

- Single closing combines your construction and mortgage loans (saves time and money)
- Competitive interest rates
- Interest-only payments during construction (up to 12 months)
- Interest rate is fixed at inception and during the construction period
- And more

Contact Lindsey today to set up an appointment!

All loans subject to credit and property approval.  
This is not a commitment to lend.

 EQUAL HOUSING LENDER, MEMBER FDIC

NMLS # 766529

[fnb-online.com](http://fnb-online.com)



**Lindsey Cartee**  
*Mortgage Banking Consultant*  
NMLS #414489  
101 N Howe St.  
Southport, NC 28461  
C: (919) 606-9981  
[carteel@fnb-corp.com](mailto:carteel@fnb-corp.com)  
[www.fnb-online.com/Mortgage/CarteeL](http://www.fnb-online.com/Mortgage/CarteeL)



First National Bank does not provide tax, legal or accounting advice. This material has been prepared for informational purposes only and is not intended to provide, and should not be relied on for, tax, legal or accounting advice. You should consult your own tax, legal and accounting advisors before engaging in any transaction. This is not a commitment to lend. All loans are subject to credit and property approval  
Powered by TCPDF ([www.tcpdf.org](http://www.tcpdf.org))





*Your home should be a reflection of who you are  
and how you live.*

**EastCoast<sup>®</sup>  
Mouldings**

*Home*  
*We are here to help.*

AVAILABLE AT:



A Name You Can Build On

1360 Whiteville Road SW  
Shallotte, NC 28470

(910) 754-3999

[www.garrisevans.com](http://www.garrisevans.com)



**ECMD**

Building Stronger. Together.  
**100% Employee Owned.**

[www.ecmd.com](http://www.ecmd.com)



**100 YEARS**  
**GARRIS EVANS**  
**Lumber Co.**

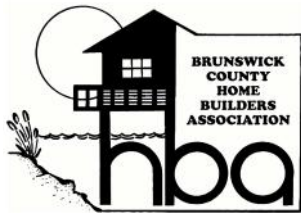
**est. 1919**

**A Name You Can Build On.**

**Leaders In Building Materials  
Sales and Distribution**

Windows & Doors  
Roofing  
Interior Trim & Doors  
Siding & Fascia  
Drywall  
Composite Decking & Railing

Engineered Wood  
Framing  
Builder Hardware  
Trusses  
Pressure Treated Lumber  
Finish Hardware



(910) 754-3999  
[www.GarrisEvans.com](http://www.GarrisEvans.com)  
1360 Whiteville Rd, Shallotte, NC







OUR PASSION,  
YOUR DREAM HOME.



119 Pinnacle Pl Suite B, Little River, SC 29566 • [info@babbcustomhomes.com](mailto:info@babbcustomhomes.com) • (843)280-6964



From the  
PUBLISHER

# THANK YOU

What an unbelievable year! I'd like to start by thanking everyone who has been involved in this magazine; the builders, the 2023 sponsors and advertisers, Tracey and Cathy of the Home Builders Association (HBA), and everyone else who has helped us along the way. To the HBA, thank you for your continued decision to partner with Vivid in producing the guidebook for your incredible event. I would also like to specially thank the Vivid team, without whom this issue would never have come to fruition.

As some of you may know, ownership of Vivid Digital Media, the producing company for the Parade of Homes magazine and website, was recently transitioned to my husband Phil and I. After working for and being vested in this company for a long time, we are exceptionally proud of the work we've been able to accomplish in such a short period. Julia Steffen, the previous owner of Vivid, has handed us the reins and we



couldn't be more honored. We look forward to this new season of our lives and getting to watch Vivid grow and flourish along with this community.

As you flip through these pages touring Brunswick County, exploring the wonderful builders we have in this area, checking out local businesses, and getting inspiration for your current home, or looking for your next one, I hope that what you see is just how vibrant this region and its people are. As transplants from Minnesota, Phil and I have never felt more welcome and at home in a community or had the opportunity to work with such wonderful individuals.

We can't wait to see everyone out there! So, join us and explore everything that Brunswick County has to offer!



Kenzi Weber  
Vivid Digital Media



HANNAH ISENHOUR | Design



MEG MEYER | Advertising



PHIL WEBER | Photography

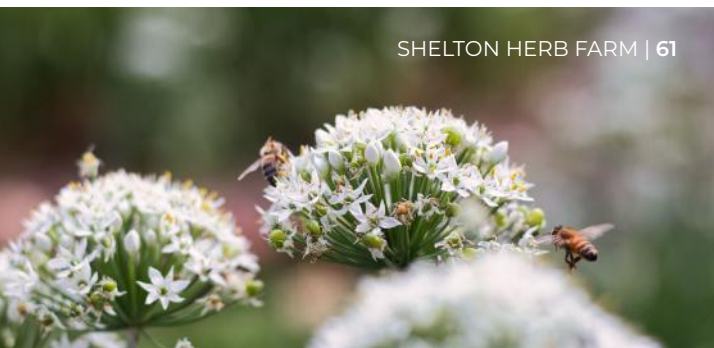




HOLDEN BEACH PAVILION | 27



LELAND CULTURAL  
ARTS CENTER | 61



SHELTON HERB FARM | 61



VINO FIORE WINE SHOP  
& TASTING ROOM | 26



RUSTY HOOKS  
DOCKSIDE GRILL | 39



SOUTHPORT MARITIME  
MUSEUM | 38

# Contents & FEATURES

- 1 ABOUT THE  
BRUNSWICK COUNTY  
PARADE OF HOMES
  
- 14-15 BRUNSWICK COUNTY  
FALL EVENTS
  
- 16-18 2023 COVER STORY  
A Dream Team for  
Dream Homes
  
- 20-21 BUILDER INDEX
  
- 22-23 MAP OF ENTRIES
  
- 26-36 SOUTH BRUNSWICK  
Calabash, Sunset Beach, Ocean  
Isle Beach, & Holden Beach
  
- 38-58 EAST BRUNSWICK  
Bolivia, Oak Island, & Southport
  
- 60-72 NORTH BRUNSWICK  
Leland & Winnabow
  
- 75-84 VIRTUAL TOURS
  
- 87-95 RENOVATIONS



BRADDOCK BUILT  
CUSTOM HOMES | 16





**MOEN**<sup>®</sup>

SHALLOTTE  
**SES**  
ELECTRIC STORES

## The Smart Kitchen Perfected

The Moen STō Smart Faucet makes life easier in the kitchen. Achieve precise volume and temperature control with your voice or a tap of the app. Turn water on and off with the wave of your hand or simply use the handle. Plus, with a wide range of styles and finishes, it's a beautifully practical addition to any home.

Visit [shallotteelectric.com](http://shallotteelectric.com) to learn more

4900 Main St, Shallotte, NC 28470 | 910-754-6000



**FIRST BANK**

# Find a house. We'll help make it your home.

Conventional Loans

Jumbo Loans

Government Loans

MedPro Loans

Construction Loans

Dream it, Own it



## Shalotte

347 Whiteville Road NW

## Southport

5210 Southport Supply Road SE

## Ocean Isle Beach

6303 Beach Drive SW

## Leland

10 Waterford Business Ctr W

Learn more about how we can help at  
**[localfirstbank.com/mortgage](http://localfirstbank.com/mortgage)**

Loans subject to credit approval. First Bank NMLS 474504. Carolyn Walls NMLS 415621. Dianne McRaney NMLS 810542. Nick Frank NMLS 182533. Pam Grimes NMLS 415426. Equal Housing Lender | Member FDIC



**Carolyn S. Walls**

[cwalls@localfirstbank.com](mailto:cwalls@localfirstbank.com)

910-578-5950



**Dianne F. McRaney**

[dmcraaney@localfirstbank.com](mailto:dmcraaney@localfirstbank.com)

910-231-4167



**Nick Frank**

[nfrank@localfirstbank.com](mailto:nfrank@localfirstbank.com)

910-297-8897



**Pam Grimes**

[pgrimes@localfirstbank.com](mailto:pgrimes@localfirstbank.com)

910-508-0235



# Brunswick County

## UPCOMING EVENTS

### SOUTHPORT CONCERT SERIES | SOUTHPORT

*Thursdays: Aug 31 - Nov 16, 6-8pm*

Visit Franklin Square in Southport any Thursday through Nov. 16th for a summer concert series. Bring your own blanket or chair and enjoy live music by the water.

### U.S. OPEN KING MACKEREL TOURNAMENT | OAK ISLAND

*Oct 5 Meet, Oct 6-7 Tournament*

Come out to the 45th annual King Mackerel Tournament! Competitors will start in Dutchman Creek and head out at 7am. Attendees will enjoy food, live music, and a final awards ceremony. Visit [usopenkmt.com](http://usopenkmt.com)

### SUNSET AT SUNSET | SUNSET BEACH

*Oct 7, 10am-5pm*

Enjoy the 16th annual Sunset at Sunset celebration! Visit Sunset Beach Town Park for live music, art vendors, food, drinks, and kids activities. Visit [sunsetsatsunset.com](http://sunsetsatsunset.com)



### LIVE & LOCAL | OAK ISLAND

*Saturdays: Sept 19 - Oct 28, 4-8pm*

Fall in love with this Autumn market and concert series at Middleton Park. Listen to the nearby waves while browsing local craft and food vendors and enjoying live music. Learn more at [oakislandnc.gov](http://oakislandnc.gov)

### BRUNSWICK COUNTY INTERCULTURAL FESTIVAL | BELVILLE

*Oct 8, 11am-4pm*

Experience a world of culture right here in Brunswick County! See an abundance of performers representing their unique nationalities along with educational activities, food, music and dancing. Visit [bcifestival.org](http://bcifestival.org)

### NORTH CAROLINA OYSTER FESTIVAL | OCEAN ISLE BEACH

*Oct 21, 9am-6pm & Oct 22, 10am-5pm*

Come one, come all to the 42nd annual NC Oyster Festival! Held at Town Center Park, visitors will find a variety of foods, crafts, contests, activities, and musical performances, all in celebration of a local staple, the oyster! Find out more at [ncoysterfestival.com](http://ncoysterfestival.com)



### PORT BRUNSWICK DAY | WINNABOW

*Oct 21, 10am-4pm*

Come out to Fort Anderson State Historic Park and watch history come to life! Explore history with live performances demonstrating what life was like for the residents of a port town on the Lower Cape Fear River in 1761.

### BRUNSWICK FALL FESTIVAL | BOLIVIA

*Oct 26, 6-9pm*

Visit the government complex for traditional holiday games, haunted trails, hay rides, food, and more!



### NC FESTIVAL BY THE SEA | HOLDEN BEACH

*Oct 28, 9am-5pm & Oct 29, 9am-4pm*

Don't miss this year's NC Festival by the Sea at the Holden Beach Pavilion! On the only day of the year that the Holden Beach Bridge is open to pedestrians, explore over 120 vendors. Enjoy arts and crafts, food, fun activities, and live entertainment. Learn more at [ghb-ma.org](http://ghb-ma.org)

### CLASSIC CARS ROCK N' ROLL CRUISE IN | SOUTHPORT

*Oct 28, 8:30am-4pm*

Enjoy classic cars, food, and live music! For more information, visit [capefearcruisers.com](http://capefearcruisers.com)

# NOV

# FOO

### SOUTHPORT WOODEN BOAT SHOW | SOUTHPORT

*Nov 4, 10am-4pm*

Come down to the Yacht Basin to see hand-crafted wooden boats of all shapes and sizes both in and out of the water. Meet the makers and owners, vote for your favorite, and enjoy food, art vendors, activities, and entertainment. Visit [southportwoodenboatshow.com](http://southportwoodenboatshow.com)

### THE GREAT PUMPKIN BLOWOUT | WINNABOW

*Nov 4, 11am-4pm*

Bring your old jack-o-lanterns to Fort Anderson for a spectacular blow out! You can spectate or take a chance to join in on the fun with your own pumpkin detonator.

### VETERANS DAY CEREMONY | BELVILLE

*Nov 11, 9am-12pm*

Honor America's veterans by attending this wreath-laying ceremony at the Brunswick Riverwalk Park.



**SHALLOTTE HOLIDAY MARKET | SHALLOTTE**

*Nov 18, 10am-2pm*

Start your holiday shopping at Mulberry Park! With over 20 local vendors, you're sure to find the perfect gift or pick up something for yourself while enjoying food and live music.

**BLACK FRIDAY HOLIDAY MARKET | OCEAN ISLE BEACH**

*Nov 24, 10am-3pm*

Get your shopping underway with great finds from over 90 talented artists. Check out more at [thepuremarkets.com](http://thepuremarkets.com)

**DEEP DIVE INTO HISTORY | SOUTHPORT**

*Nov 18, 10am-3pm*

Come to the NC Maritime Museum for the final Deep Dive of 2023. Learn about the importance of the NC Naval Reserves in the Spanish American War with a program designed for all ages!



**LETTERS TO SANTA | OCEAN ISLE BEACH**

*Nov 24, 6-8pm*

Visit Santa this year at a Winter Wonderland in Town Center Park! The festivities will include pictures with Santa, a letter writing station and mailbox to the North Pole, a tree lighting ceremony, cookies, and hot chocolate. Learn more at [oibgov.com](http://oibgov.com)

**WINTERFEST FESTIVAL | SOUTHPORT**

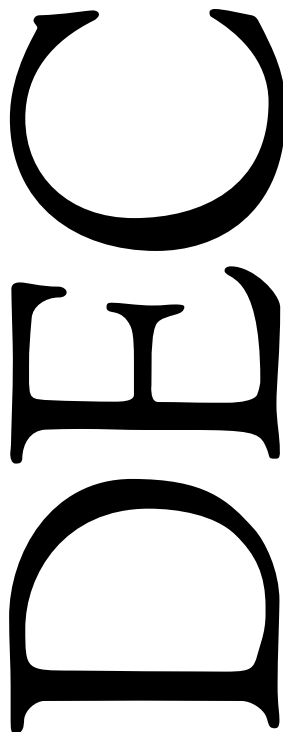
*Dec 1 - Dec 9*

Kick off your holiday season with the much anticipated, days long Winterfest Festival! A variety of events and activities will take place all across Southport. Learn more at [downtownsouthport.org](http://downtownsouthport.org)

**HOLIDAY ART MARKET | LELAND**

*Dec 2, 10am-3pm*

Visit the Leland Cultural Arts Center for this popular, one day holiday market featuring unique, handmade pieces from local artists and craftsmen.



**CHRISTMAS PARADES AND FLOTILLAS IN BRUNSWICK**

*Nov 25*

Ocean Isle Beach Flotilla | [oceanislebeachflotilla.com](http://oceanislebeachflotilla.com)

*Dec 2*

Oak Island Christmas by the Sea, 2pm | [oakislandnc.gov](http://oakislandnc.gov)

Shallotte Christmas Parade, 10am | [townofshallotte.org](http://townofshallotte.org)

Leland Christmas on Deer Creek, 10am | [lelandchamber.com](http://lelandchamber.com)

*Dec 9*

Bolivia Christmas Parade, 11am | [townofbolivia.org](http://townofbolivia.org)

Southport Flotilla | [cityofsouthport.com](http://cityofsouthport.com)

**SUNSET BEACH HOLIDAY MARKET | SUNSET BEACH**

*Dec 2, 10am-3pm*

Explore over 80 vendors and artisans and find something for everyone on your list this holiday season. Browse goods like woodcrafts, jewelry, art, baked goods, specialty foods, and wine all while enjoying live music.

**COOKIES WITH SANTA | LELAND**

*Dec 6, 6:30-8pm*

Who doesn't want a chance to share milk and cookies with Santa? Visit the Leland Cultural Arts Center to do just that along with holiday crafts and story time. Register at [townofleland.com](http://townofleland.com)

**A LIGHT IN THE DARKEST OF NIGHT | WINNABOW**

*Dec 8, 4-7pm*

Get a chance to experience an evening of peace amongst the ruins of St. Philips Church at Fort Anderson. Learn more at [historicsites.nc.gov](http://historicsites.nc.gov)

**HISTORIC HOLIDAYS | SOUTHPORT**

*Dec 8, 12-4pm*

Get a taste of historic holidays at the NC Maritime Museum. Staff and volunteers will be decked out in traditional dress with crafts and activities for the whole family.



**WINTER CRAFT FESTIVAL | SOUTHPORT**

*Dec 9, 9am-4pm*

Get some holiday shopping done at Franklin Square Park this season! The Southport Winter Craft Festival hosts a number of vendors offering handcrafted home decor, jewelry, arts, baked goods, and more.

**AN 18TH CENTURY CHRISTMAS | WINNABOW**

*Dec 10, 1-5:30pm*

Take the chance to see how 18th century colonists celebrated Christmas. Enjoy period inspired refreshments, games, and crafts along with an authentic 18th century candle lighting ceremony. For more information, visit [historicsites.nc.gov](http://historicsites.nc.gov)

**CHRISTMAS VILLAGE | SHALLOTTE**

*Dec 16, 10am-2pm*

Swing by Mulberry Park to browse the stands of local artisans, farmers, and other vendors. While you're there, enjoy food and live music too!





# A Dream Team For Dream Homes

A partnership between friends opens new doors for custom building in Brunswick County



TO BUY OR TO BUILD? | The first and most crucial decision a homeowner must make. Will they be satisfied with purchasing an existing home or prefer one designed and built to their personal needs? Fortunately, those in Brunswick County who venture into the world of custom-built homes have many amazing resources. The Parade of Homes showcases exceptional properties where builders cater to a wide range of tastes, from turnkey homes to fully customized masterpieces. Now, Brunswick County is even more fortunate, as an esteemed remodeler has extended her services to encompass custom-built homes.

With the beginning of a new partnership, Braddock Built Renovations has expanded its horizons to include Braddock Built Custom Homes. Betsy Braddock, owner of Braddock Built, and Cathy Brown, an accomplished construction coordinator, with 24 years of experience working with Ernie of Ernest G. Crews Construction, Inc., have fostered a deep friendship rooted in mutual respect for each other's work in the design and construction industries. This treasured friendship has evolved into a dynamic partnership committed to crafting custom homes that surpass expectations.

Both Betsy and Cathy have been dedicated to the world of construction since 1999. After working in commercial real estate, Betsy transitioned to the construction industry where she worked with her father in Atlanta, Georgia. Her passion for building only grew stronger but she noticed a lack of women doing what she wanted to do. "I told my dad that I was joining his renovation team. He told me there just weren't any girls in construction. 'Why not?' I demanded. Then I told him that I would be and that I'd do it all in a red dress." Since then, Betsy has proudly worn her iconic red dress and heels in promotional materials throughout her career in construction. After honing her skills in Atlanta, she found an opportunity to move Braddock Built Renovations to coastal Carolina. As an exceptionally skilled builder in Brunswick County, Braddock Built has become one of the only construction firms specializing in high-end renovations in the region. Inspired by a desire to create transformative spaces and consider



*"We're more than just builders."*

the building science of whole-house systems, Betsy is proud to have brought dream homes to clients from around the world.

Cathy's path began in customer service, where her love of understanding and caring for people grew. She then got the opportunity to work with Ernie of Ernest G.

Crews Construction. In her collaboration with Ernie, Cathy excelled as a construction planner and coordinator, demonstrating her exceptional attention to detail. When Ernie decided to retire earlier this year, Cathy knew her mission wasn't over; it was just evolving. "For me, it's all about the connection with people. I still have previous clients who keep in touch. They continue to send Christmas cards years later, or they call me with questions about their home. Connecting with someone like that is what I love doing and I want to keep doing that." Her unwavering commitment to understanding clients and improving their lives through the magic of home design and construction coordination became the driving force behind this partnership with Betsy.

What sets Braddock Built Custom Homes apart is their deeply personal approach. Betsy and Cathy start the process by getting to know their customers. Before any design takes shape, they immerse themselves in their clients' dreams and aspirations. Cathy emphasizes,





"We're more than just builders. We build a relationship with our clients to understand exactly how they want to live in their homes. Then, we bring those ideas to reality". This method results in fully customized spaces that not only look stunning but also function seamlessly, aligning perfectly with the homeowners' lifestyles. Once the vision is crystal clear, they guide clients through the design process, making it a tangible and immersive experience. From marking out spaces with tape on the floor to experimenting, adjusting, and perfecting every aspect, clients will feel like they've already cooked, entertained, and relaxed in their kitchen before a single cabinet has been built. Betsy's words resonate, "Anyone can look at a blueprint, but a blueprint can't tell you how a space feels to live in. We help with that understanding."

As functional aspects of each space are meticulously determined, clients transition into the creative realm of 'the details.' Betsy and Cathy, true experts in the field, guide clients through this exciting phase, introducing them to styles and elements they may not have considered. The fixture and finish selection can be overwhelming for some, but Betsy and Cathy find the exploration of personal tastes exciting. Every inch of the home from the largest features to the smallest detail, down to the hinges on the

doors, is carefully tailored to match the client's preferences. The result is not just a house; it's a work of art, an embodiment of the client's lifelong dreams, and often, more than they ever imagined.

Throughout their careers, both Betsy and Cathy have cherished the impact they've had on their clients' lives. Their unwavering dedication to addressing individual client needs and providing exceptional service throughout the building process is a testament to their genuine care and commitment. They're not just building homes, they're fulfilling dreams. The talents of these remarkable women are undeniable and they seem poised to excel in any field they choose to conquer. When asked what they're most excited for in the future, they both express their anticipation for connecting with even more wonderful people and crafting homes that bring joy year after year. These residences are designed to be more than just structures; they are homes, where every detail reflects the unique dreams of those who reside within them.

Betsy and Cathy's unwavering dedication to client-centered design encapsulates the spirit of custom homes where every choice is, like Betsy often toasts,

# *Up to you!*



# WINE & TASTINGS



vinofiore  
WINE SHOP & TASTING ROOM

Indulge your senses at Vinofiore, your new destination for fantastic, small-producer wines at every price from around the world. Our boutique wine shop offers new wines to taste each week, custom gift baskets and unique gifts, daily tastings, and expert wine selection and pairing guidance in a cozy, welcoming atmosphere.

5039 MAIN ST. SHALLOTTE | BEHIND FIRST CITIZEN'S BANK  
VINOFIORE.COM | (910) 553-0487



# Parade ENTRIES

## NEW CONSTRUCTION | *Calabash, Sunset Beach, Ocean Isle Beach, & Holden Beach*

1 Surfside | Page 28  
Dream Finders Homes

2 Annandale | Page 29  
Lennar Coastal Carolinas

3 Hanover | Page 30  
Bill Clark Homes

4 Wisteria | Page 31  
Dream Finders Homes

5 Ivy | Page 33  
Dream Finders Homes

6 Waterstone | Page 34  
QRI Construction Corp

7 Conway | Page 35  
Joy Construction Company

8 Villa Blanca | Page 36  
Carolina Craftsman, Inc.

## NEW CONSTRUCTION | *Bolivia, Oak Island, & Southport*

9 Robyn | Page 40  
Southern Comfort Homes, Inc.

10 Kindle II | Page 41  
Trusst Builder Group

11 Cypress | Page 42  
Legacy Homes by Bill Clark

12 Summerlyn | Page 45  
Liberty Homes

13 Barton | Page 46  
Richmond Homes

14 Majestic Views | Page 47  
Firetti Builders, Inc.

15 Magnolia | Page 50  
RiverBrook Builders

16 Hammock | Page 51  
Barker & Canady Custom Homes

17 Woods Cove | Page 52  
Hagood Homes

18 Burns | Page 55  
Joy Construction Company

19 Parrish Paradise | Page 56  
Centerline Development, Inc.

20 Oak Island Oasis | Page 57  
Canady Durako Building Company

21 Seaside Manor | Page 58  
SCH Property Development Corp.

- |    |   |    |   |
|----|---|----|---|
| 22 | Mulberry I   Page 62<br>Logan Homes             | 27 | Copperwynd   Page 69<br>Liberty Homes     |
| 23 | Southport   Page 63<br>Stevens Fine Homes       | 28 | Summerlyn II   Page 70<br>Liberty Homes   |
| 24 | Islander   Page 64<br>Stevens Fine Homes        | 29 | Harbor Town III   Page 71<br>Hagood Homes |
| 25 | Bismark   Page 67<br>Legacy Homes by Bill Clark | 30 | Cape Lookout   Page 72<br>Hagood Homes    |
| 26 | Catawba   Page 68<br>Trusst Builder Group       |    |   |

#### VIRTUAL TOURS

- |    |  |    |  |
|----|--|----|--|
| 31 | River Sunsets   Page 76<br>Ollo                              | 35 | Ashley's Retreat   Page 82<br>SCH Property Development Corp. |
| 32 | West Indies Whisper   Page 77<br>True North Building Company | 36 | Sleepy Hollow   Page 83<br>Schiano Development               |
| 33 | Jennifer   Page 78<br>Southern Comfort Homes, Inc.           | 37 | Turtle Cove   Page 84<br>Richmond Homes                      |
| 34 | Key To Paradise   Page 79<br>Moffitt Builders, Inc.          |    |  |

#### RENOVATIONS

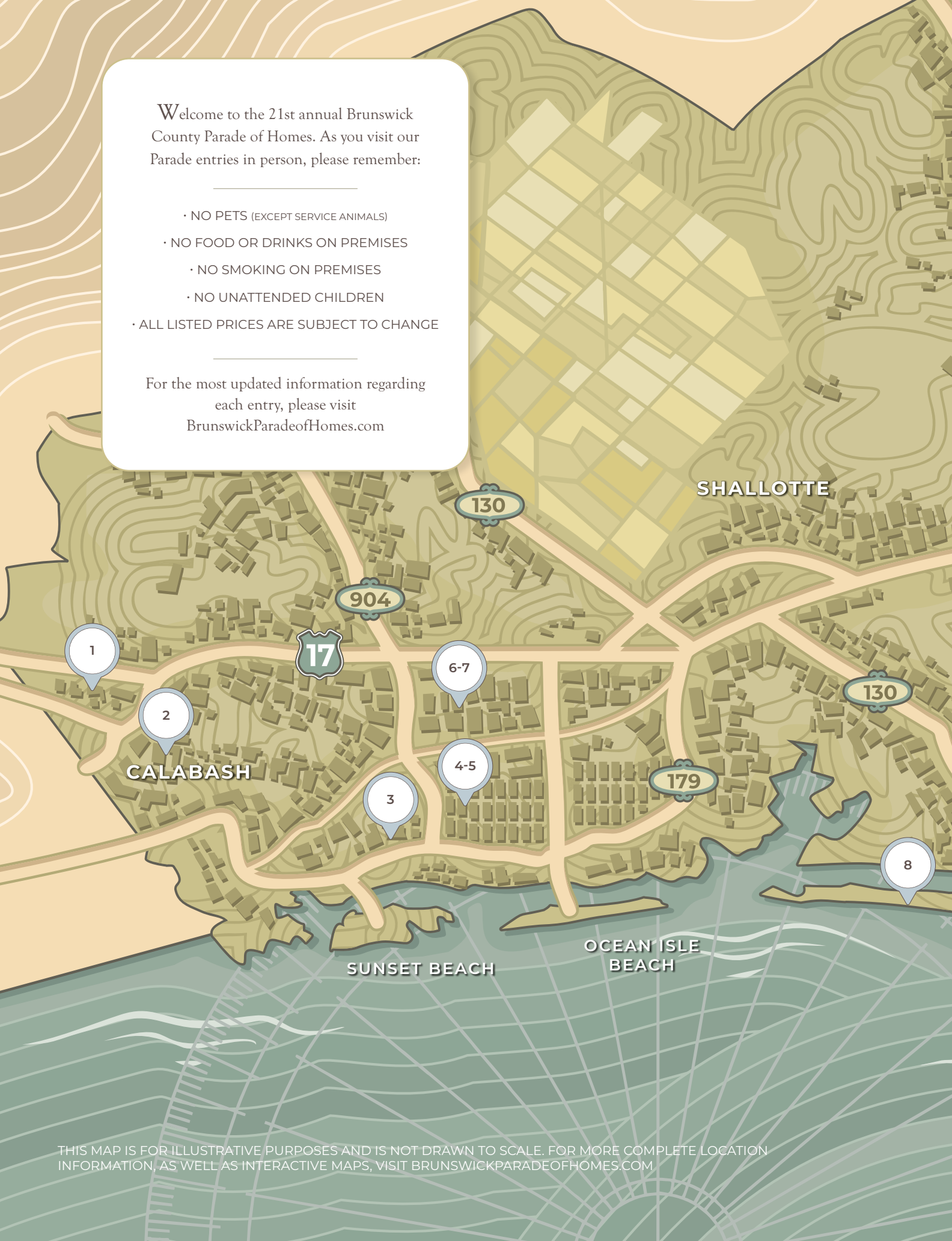
- |   |   |
|---|---|
| Happy Cooking in Calabash   Page 88<br>Braddock Built Renovations | Laurel   Page 93<br>Prestige Outdoor Lighting                           |
| I Love My Porch   Page 89<br>WindowZ, Inc.                        | St. James 'Stay-cation'   Page 94<br>Carolina Creations Landscapes Inc. |
| Driftwood   Page 90<br>Prestige Outdoor Lighting                  | Salt Marsh Cottage   Page 95<br>Kelley Construction Services, LLC       |
| Chefs' Expansion   Page 91<br>Braddock Built Renovations          |   |



Welcome to the 21st annual Brunswick County Parade of Homes. As you visit our Parade entries in person, please remember:

- NO PETS (EXCEPT SERVICE ANIMALS)
- NO FOOD OR DRINKS ON PREMISES
  - NO SMOKING ON PREMISES
  - NO UNATTENDED CHILDREN
- ALL LISTED PRICES ARE SUBJECT TO CHANGE

For the most updated information regarding each entry, please visit [BrunswickParadeofHomes.com](http://BrunswickParadeofHomes.com)





28-29

30

74

LELAND

17

23-27

211

22

WINNABOW

17

BOLIVIA

133

17

SUPPLY

9

87

10-11

211

12-17

SOUTHPORT

18-21

HOLDEN BEACH

OAK ISLAND



# COLDWELL BANKER SLOANE REALTY

---

# YOUR KEY TO THE COAST



**COLDWELL  
BANKER**  
SLOANE REALTY

**TRUSTED REAL ESTATE ADVISOR SINCE 1955**

OCEAN ISLE BEACH (910) 579-1144 | SUNSET BEACH (910) 579-1808  
SUNSET BEACH ISLAND (910) 579-6500 | [cbsloane.com](http://cbsloane.com)



# GET YOUR WORD OUT THERE



Does marketing feel like you're shouting into a crowd? Vivid Digital Media can help. Vivid is a full service, digital marketing and design agency focused on the unique needs of small businesses. Our team offers an array of marketing services to increase your business and simplify your workflow. Keep doing what you do best, and leave the rest to us.



[vividigitalmedia.com](http://vividigitalmedia.com) | 910.920.0291 | [info@vividigitalmedia.com](mailto:info@vividigitalmedia.com)

 [@vividigitalmediaNC](https://www.facebook.com/vividigitalmediaNC)  [@vividigitalmedia](https://www.instagram.com/vividigitalmedia)






VINOFIORE WINE SHOP & TASTING ROOM | Centrally located in Shallotte, this boutique retailer provides gourmet foods and small-production wines from around the world. Their knowledgeable, friendly staff are eager to help you discover the perfect bottle for any occasion. Focused on quality and a passion for great wine, they offer daily tastings, special events, and live music.





# Calabash, Sunset, OCEAN ISLE & HOLDEN BEACH

A woman in a bright yellow dress and a small child in a white dress are walking along a wooden boardwalk. The boardwalk has a wooden railing and a metal handrail. In the background, there is a body of water with several boats, a red building, and a large bridge structure. The sky is a clear, light blue, suggesting a sunset or sunrise. The overall scene is peaceful and scenic.

THE HOLDEN BEACH PAVILION | Every summer, the pavilion on Holden Beach hosts a number of events, including a summer-long concert series and the annual NC Festival by the Sea. Come join the fun on October 28th and 29th with local craftsmen and artisans, live entertainment, contests, food vendors, and children's activities.



OPEN TO PUBLIC



# Surfside

CALABASH STATION  
1132 CALABASH STATION BOULEVARD NW  
CALABASH NC

## Dream Finders Homes

WWW.DREAMFINDERSHOMES.COM • 843-258-5150

**\$546,523**

4 BR			2,961 SQ FT
3 BA			3 CAR GARAGE



### Features

- First floor owner's suite
- Galley style gourmet kitchen
- Coastal charm design with front and rear porches
- Fully landscaped with irrigation
- Amenities will include swimming pool, cabana, and walking trail
- Golf cart friendly



**Directions:** From Hwy 17 S, turn right onto Calabash Rd NW (by CVS,). Then, turn right into Calabash Station. The Surfside is second on the right.





# Annandale

9015 ISLAND SHORE AVENUE  
CALABASH NC

# 2

## Lennar Coastal Carolinas

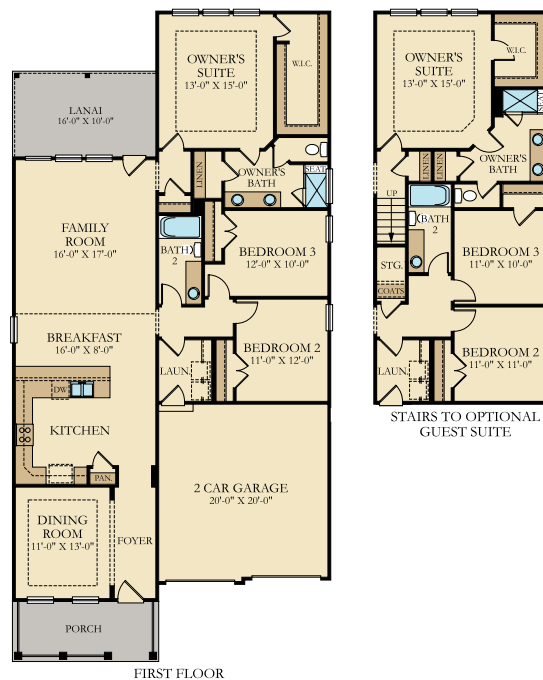
WWW.LENNAR.COM • 843-200-2915

**\$374,970**

3 BR			1,804 SQ FT
2 BA			2 CAR GARAGE

### Features

- Covered back porch
- Large island in kitchen with possible five bar stool seating
- Vaulted ceilings in the great room
- Fireplace
- Flexspace and linen closet
- Laundry/mudroom off garage with ceramic tile floors
- Large owners closet
- Ceramic tile and double vanity in owner's bath



**Directions:** From Hwy 17, turn south onto Hwy 904 toward Sunset Beach. Turn right on Sunset Blvd W and then turn right onto Beach Dr SW. The Annandale is the first home on the left.





3

# Hanover

THE SANCTUARY  
1577 MORAY LOOP  
SUNSET BEACH NC

Bill Clark Homes

WWW.BILLCLARKHOMES.COM • 910-269-6252

\$607,032

4 BR			2,371 SQ FT
3 BA			2 CAR GARAGE



## Features

- Rear-entry garage
- Large front porch
- Rear screened porch
- Second floor bonus room
- Open layout floor plan
- Prestige kitchen layout
- Built-ins around the fireplace
- Coffered ceiling in owner's suite
- Minutes from the beach



**Directions:** From Hwy 17 S, turn left onto NC-904 E/Seaside Rd SW. Continue through the traffic light and turn right into The Sanctuary. Remain on Coraline Blvd and turn right onto Murray Loop. The Hanover will be on the right.



# Wisteria

VILLAS AT SEASIDE  
100A ARNETTE DRIVE  
OCEAN ISLE BEACH NC

# 4

## Dream Finders Homes

WWW.DREAMFINDERSHOMES.COM · 843-258-5150

**\$380,000**

3 BR			1,969 SQ FT
3 BA			2 CAR GARAGE

### Features

- Golf cart friendly community
- Villa style, with one and two story duet home designs
- Walking distance to four award-winning golf courses
- Open floor plan
- Indoor/outdoor living
- Low maintenance
- Short drive to Sunset Beach
- Move-in ready homes available



**Directions:** From Hwy 17 S, turn left onto NC-904 E/ Seaside Rd SW. Next, turn left onto Arnette Dr. The Wisteria is on the left.





# You Can Count on Us.

We're driven by our mission to provide best-in-class reliability at the lowest possible cost. Affordable power you can depend on, and service you can be proud of, from your electric co-op.

 **99.9%** Reliability

 **60% Faster**

Outage restoration time compared to the national average

800.842.5871 | [bemc.org](http://bemc.org) | 795 Ocean Hwy W, Supply, NC 28462



**BRUNSWICK ELECTRIC**  
MEMBERSHIP CORPORATION





Ivy

VILLAS AT SEASIDE  
100B ARNETTE DRIVE  
OCEAN ISLE BEACH NC

5

## Dream Finders Homes

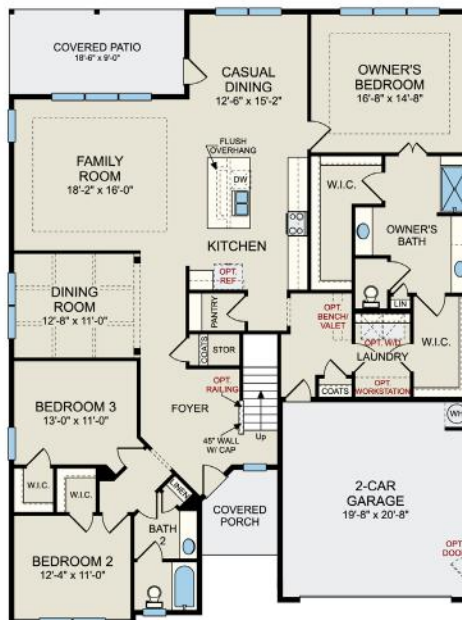
WWW.DREAMFINDERSHOMES.COM · 843-258-5150

**\$344,630**

2 BR			1,604 SQ FT
2 BA			2 CAR GARAGE

### Features

- Golf cart friendly community
- Villa style, with one and two story duet home designs
- Walking distance to four award-winning golf courses
- Open floor plan
- Indoor/outdoor living
- Low maintenance
- Short drive to Sunset Beach
- Move-in ready homes available



**Directions:** From Hwy 17 S, turn left onto NC-904 E/ Seaside Rd SW. Next, turn left onto Arnette Dr. The Ivy is on the left.





6

# Waterstone

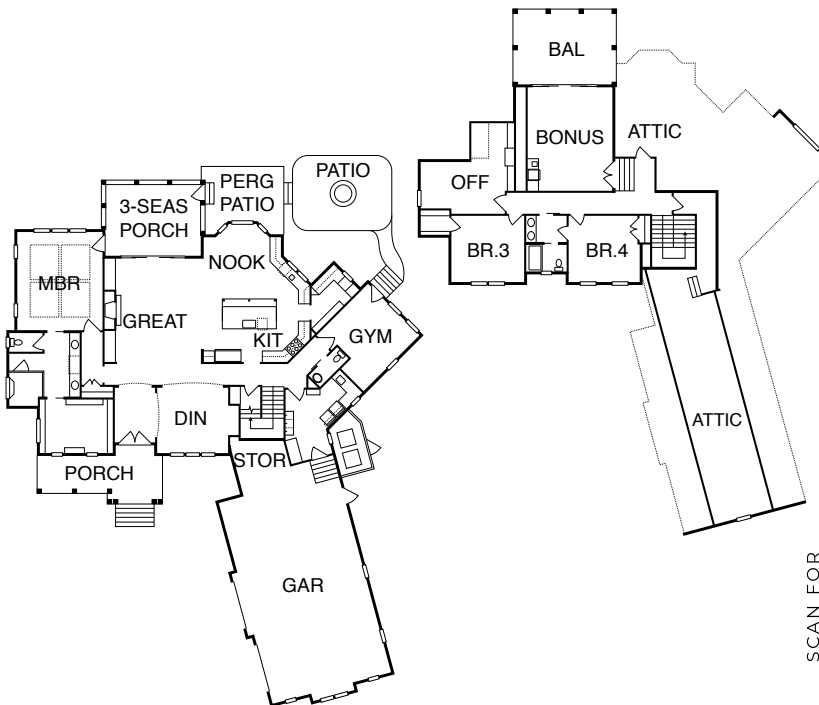
OCEAN RIDGE PLANTATION  
6859 WATERSTONE CROSSING  
OCEAN ISLE BEACH NC

## QRI Construction Corp

WWW.QRICONSTRUCTIONCORP.COM • 910-443-2416

Custom Home/Not For Sale

3 BR			3,863 SQ FT
3 BA			3 CAR GARAGE



### Features

- Beautiful exterior details
- Indoor/outdoor living space with custom pergola and firepit
- Custom cabinetry, quartz countertops, and secluded pantry
- Wolf® range and Subzero® refrigerator
- Whole house water purifier and generator
- Custom interior trim, closets, and coffered ceilings
- Flex room with gym and sauna
- Epoxy garage floor



**Directions:** Take Hwy 17 S to Ocean Ridge Pkwy SW. Turn left onto Dartmoor Way and turn right onto Waterstone Crossing. The Waterstone is at end of cul-de-sac.





# Conway

OCEAN RIDGE PLANTATION  
6606 ANNESBROOK PLACE SW  
OCEAN ISLE BEACH NC



## Joy Construction Company

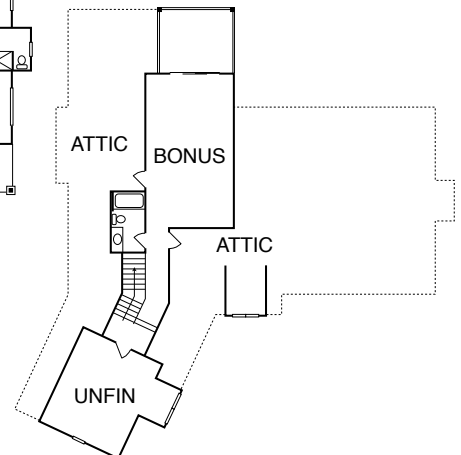
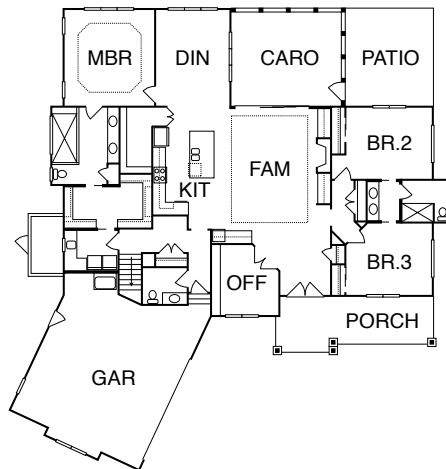
WWW.JOYCONSTRUCTIONCOMPANY.COM • 910-520-5076

Custom Home/Not For Sale

3 BR			2,957 SQ FT
3.5 BA			2 CAR GARAGE

### Features

- Game room/man cave on second level with lookout to golf course
- Hidden pantry with cabinetry for storage and built-in wine storage
- Four-season room with access to outside kitchen
- Large master closet with walk-through access to laundry room
- Jack and Jill bath with custom shower



**Directions:** Take Hwy 17 S to Ocean Ridge Pkwy SW. Turn left onto Castlebrook Way SW and then turn right onto Annesbrook Pl SW. The Conway is on the right.





OPEN TO PUBLIC



8

# Villa Blanca

689 OCEAN BOULEVARD W  
HOLDEN BEACH NC

Carolina Craftsman, Inc.

WWW.CCCRAFTSMAN.COM • 910-842-6413

Custom Home/Not For Sale

5 BR			3,581 SQ FT
5.5 BA			2 CAR GARAGE



## Features

- Vaulted wood ceilings with up-lit lighting in family room, den, and master suite
- Ocean front views and glass exterior railings
- Custom tiling, cabinetry, and bunk beds
- Steam shower
- Pool and tiki bar
- Elevator
- Handmade oyster stone fireplace front and molded countertop
- Exquisite handmade chandeliers



**Directions:** From Hwy 17 N, turn right onto Mt. Pisgah Rd. Continue straight as it turns into Holden Beach Rd and turn right at the traffic light. Cross bridge onto the island and turn right onto Ocean Blvd. Villa Blanca is on the left, ocean side.





2014 & 2021  
DIAMOND  
AWARD WINNER  
NEW HOME CATEGORY




**CAROLINA  
CRAFTSMAN**  
Custom Construction & Renovations  
*...when craftsmanship matters*

CCCraftsman.com | CarolinaCraftsman@atmc.net | 910-842-6413

*Voted 2017 Builder of the Year*  
**CUSTOM HOMES**  
**COMMERCIAL & RESIDENTIAL RENOVATIONS**  
**DEDICATED DESIGN TEAM**

*Make an appointment to visit our showroom at 3172 Holden Beach Rd, Holden Beach*







### THE INTRACOASTAL WATERWAY |

This stretch of water is a staple feature throughout Brunswick County. From water sports and fishing to simply enjoying the view, there's much here to love. Seen near G. V. Barbee Bridge between Oak Island and Southport, fondly referred to by locals as The Old Bridge, is a beautiful expanse of salt marshes common to this environment.

### NORTH CAROLINA MARITIME MUSEUM AT SOUTHPORT |

Long known as the Graveyard of the Atlantic, the Cape Fear region has an abundant and rich history to explore. The Maritime Museum in Southport tells the story of this area with exhibits and educational events for all ages.





# Bolivia, Southport, & OAK ISLAND



**RUSTY HOOKS DOCKSIDE GRILL |**  
With a focus on fresh, local food and an incredible view of the Intracoastal Waterway, Rusty Hooks is an obvious favorite of residents and visitors alike. The staff at this restaurant and bar are well versed in providing the hospitality that the Lowcountry is known for. Enjoy both indoor and outdoor seating and try some of the best seafood Brunswick County has to offer.





9

# Robyn

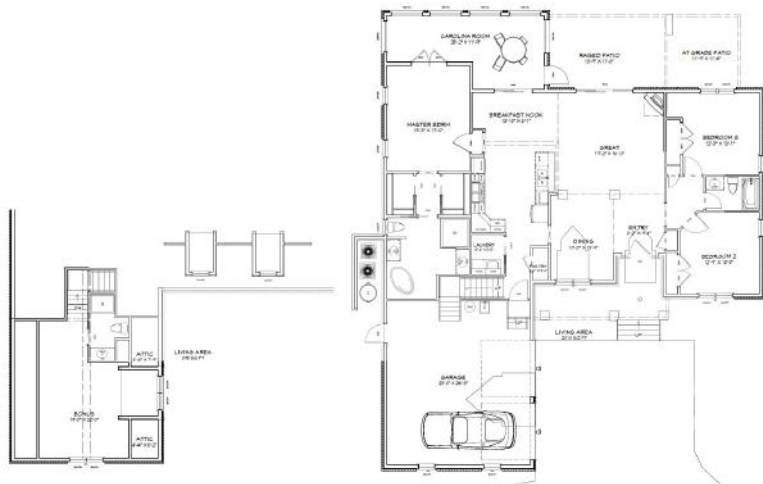
PALMETTO CREEK  
1174 NATAL DRIVE SE  
BOLIVIA NC

## Southern Comfort Homes, Inc.

WWW.SCHOMESNC.COM • 910-454-8604

Custom Home/Not For Sale

3 BR			2,460 SQ FT
3 BA			2 CAR GARAGE



### Features

- Craftsman full brick home
- Open floor plan in split bedroom design
- Ten-foot ceilings with coffered great room
- Carolina room and raised patio
- Tiled baths and showers with zero-entry master shower
- Luxury vinyl plank flooring
- Dramatic colors and trim with accented doors
- Two-by-six construction



**Directions:** From Hwy. 17 S, turn left on Hwy. 211 towards Southport. Palmetto Creek is 3.5 miles down on the left. Continue on Palmetto Creek Way for .5 miles and turn left onto St. Simons Way. At the traffic circle, take the second exit onto Natal Dr. SE and the Robyn is on the right.



# Kindle II

THE LAKES AT PINE FOREST  
3425 ISLAND LAKES DRIVE  
OAK ISLAND NC

# 10

## Trusst Builder Group

WWW.TRUSTSBUILDERGROUP.COM • 910-371-0304

**\$497,500**

4 BR			2,129 SQ FT
3 BA			2 CAR GARAGE

### Features

- Open concept living, dining, and kitchen
- Spacious screened porch
- Fireplace with built-ins
- Large primary suite with walk-in closet and shower
- Coffered ceiling in family room
- Trey ceilings in dining and primary bedrooms
- Second floor guest suite



**Directions:** From Hwy 17, take NC-211 S/Southport-Supply Rd towards Southport. Turn left onto Pine Plantation Pkwy which will become Lake Club Circle. Turn right onto Island Lakes Drive.





11

# Cypress

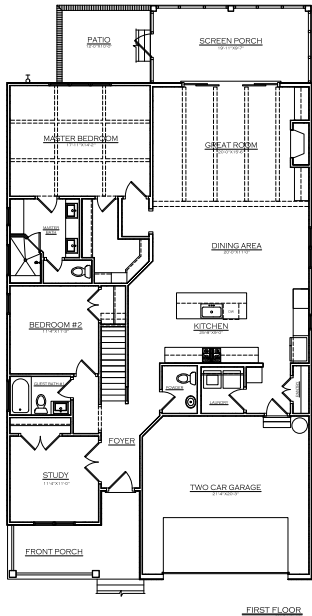
PINE FOREST  
3429 ISLAND LAKES DRIVE  
OAK ISLAND NC

## Legacy Homes by Bill Clark

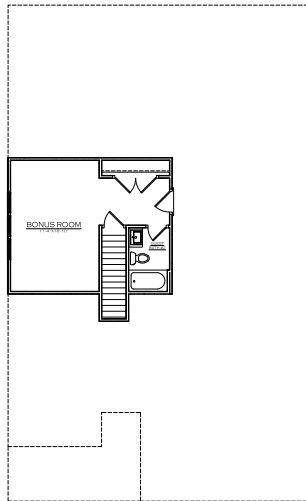
WWW.BILLCLARKHOMES.COM • 910-269-6252

**\$577,680**

3 BR			2,231 SQ FT
3 BA			2 CAR GARAGE



FIRST FLOOR



BONUS ROOM



### Features

- Second floor bonus room
- Rear screened porch
- Open layout floor plan
- Prestige kitchen layout
- Exposed stained beams in great room
- Shiplap fireplace with floating mantle
- Built-ins around the fireplaces
- Coffered ceiling in owner's suite

**Directions:** From Hwy 17, turn left on Hwy 211 towards Southport. Drive passed NC-906/E F Middleton Blvd and turn left on Pine Plantation Pkwy. Turn left on Lake Club Cir and right on Island Lakes Dr. Keep left at the curve and the Cypress will be on the left.

**FIRST ALERT  
WEATHER**

**WECT6  
NEWS**

*STAY AHEAD OF  
**THE STORM***



**ERIC**

**GANNON**

**GABE**



**GET INSTANT ALERTS**

DOWNLOAD THE **FIRST ALERT WEATHER APP**



[wect.com/anywhere](http://wect.com/anywhere)





# Directions Through ST. JAMES

## 12 | Summerlyn

From the main gate of St. James Plantation, head east on St. James Dr SE. Turn right onto Ridgecrest Dr, then turn left on Wyndmere Dr. Turn right onto Bridgewater Dr, then turn left onto Essex Dr and home is on the left.

## 13 | Barton

From 3012 Essex Dr, continue on Essex Dr, turning right onto Moss Hammock Wynd. Turn right and follow Moss Hammock Wynd and then turn left onto Oceanic Dr. At the traffic circle take the second exit onto Pine Forest Dr, and at the next traffic circle, take the first exit onto Park Ridge Dr. Turn right on White Spruce Glen and the home is on the right.

## 14 | Majestic Views

From 3570 White Spruce Glen, take a left on Park Ridge Dr, turn right onto Majestic Dr and the home is at the end of the cul-de-sac.

## 15 | Magnolia

From 3470 Majestic Dr, return to Park Ridge Dr and turn right. At the traffic circle, take the first exit onto Morningdale Dr, then turn left onto W Medinah Ave. Next, turn left onto Members Club Blvd and turn right onto St. James Dr SE. At the traffic circle, take the first exit and continue on St. James Dr SE, then turn left onto Harbormaster Dr (Harbormaster is a half-circle; take the second Harbormaster option). Lastly, turn right onto Breffin Ct and the home is on the right.

## 16 | Hammock

From 2786 Breffin Ct, take a left on Harbormaster Dr. Then turn left on St. James Drive and the home is on the left.

## 17 | Woods Cove

From 2383 St. James Dr, continue west on St. James Dr for approx 0.1 miles. The home is on the right.

To exit St. James Plantation: From 2346 St. James Dr, continue west for approximately one mile to exit through St. James' Grove Gate. At Middleton Dr, turn right to get to Hwy. 211 or left (U-turn on Middleton) to get to Oak Island.



YOUR  
IMAGINATION  
IS OUR  
STANDARD!

4705 Southport Supply Rd., #202  
Southport, NC

[firettibuilders.com](http://firettibuilders.com)  
910.477.6018





# Summerlyn

ST. JAMES PLANTATION  
3012 ESSEX DRIVE  
SOUTHPORT NC

# 12

## Liberty Homes

WWW.LIBERTYHOMESANDBUILDING.COM • 910-397-2777

Custom Home/Not For Sale

4 BR		3,837 SQ FT
3.5 BA		2 CAR GARAGE

### Features

- Custom stick-built framing
- Rear covered balcony
- Quartz countertops
- Custom master bathroom with soaking tub
- Large kitchen island and under cabinet lighting
- Coffered ceilings in study
- Conventional framed sunroom
- Vaulted ceiling in living room with stained beams



**Directions:** From the main gate of St. James Plantation, head east on St. James Dr, turn right onto Ridgcrest Dr, turn left on Wyndmere Dr, turn right onto Bridgewater Dr, turn left on to Essex Dr and Summerlyn is on the right.

FRONT BONUS ROOM      DOUBLE BONUS ROOM





# 13 Barton

ST. JAMES PLANTATION  
3570 WHITE SPRUCE GLEN  
SOUTHPORT NC

## Richmond Homes

WWW.RICHMONDHOMESNC.COM • 910-859-9571

Custom Home/Not For Sale

4 BR			2,508 SQ FT
3 BA			2 CAR GARAGE



### Features

- Modern farmhouse style
- 10-foot ceilings and 8-foot doors
- Outdoor shower
- Screened porch and patio
- Custom cabinetry and woodwork
- Guest suite with separate entrance
- Walk-in shower and large soaking tub
- Extra large master closet



**Directions:** From the main gate of St. James Plantation, proceed on St. James Dr. Turn right onto Members Club Dr, turn right on W Medinah Dr, and turn right onto Morningdale Dr. Take the 2nd exit at the traffic circle onto Parkridge Dr. After 1 mile, turn right onto White Spruce Glen and The Barton is on the right.





# Majestic Views

ST. JAMES PLANTATION  
3470 MAJESTIC DRIVE  
SOUTHPORT NC

# 14

## Firetti Builders, Inc.

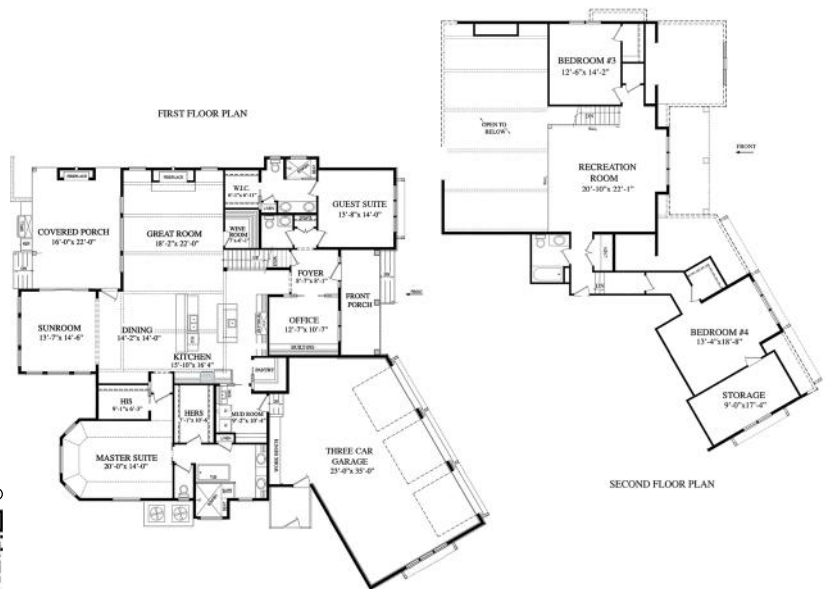
WWW.FIRETTIBUILDERS.COM • 910-477-6018

Custom Home/Not For Sale

4 BR			3,958 SQ FT
4 BA			3 CAR GARAGE

### Features

- Custom trim details throughout
- Great room with stained beamed ceiling
- Chef's kitchen with two center islands
- Conditioned wine room
- Master bath with tile wall accent
- Covered patio with fireplace and outdoor kitchen
- Outdoor oasis with water feature
- Swimming pool with travertine surround



**Directions:** From the main gate of St. James Plantation, turn right onto Ridgecrest Dr. and right onto Wyndmere Dr. Turn right at the first traffic circle to Oceanic Dr, left at the second traffic circle to Pine Forest Dr, and right at the third traffic circle to Park Ridge Dr. Turn left on Majestic Dr and Majestic Views is at the end of cul-de-sac.



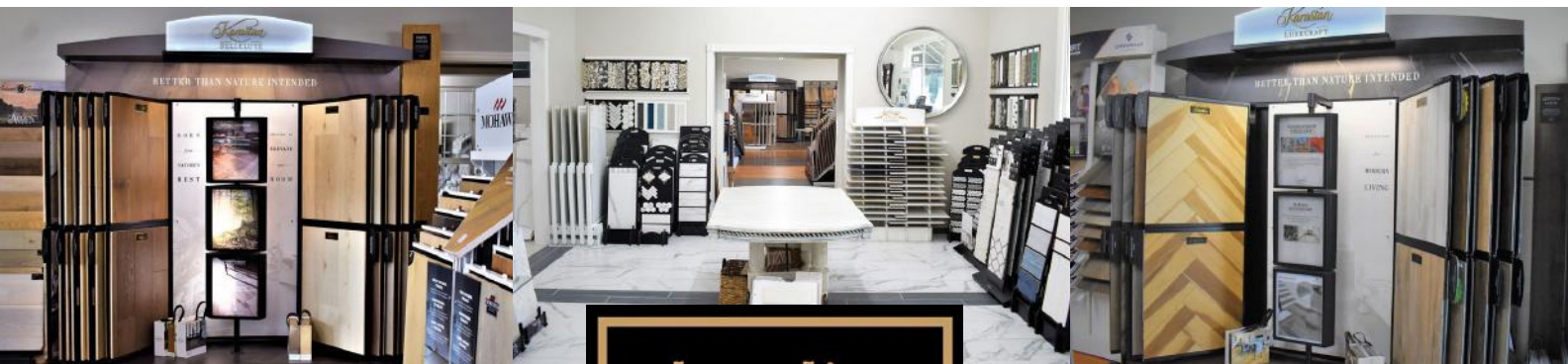


Let **OUR SHOWROOM**  
create **YOUR SHOWPLACE**

COME SEE OUR 4,000 SQUARE FOOT SHOWROOM  
Most Exclusive Brands in Brunswick County  
FLOORING FOR ALL BUDGETS

214 Village Rd SW  
Shalotte, NC 28470

[WWW.SHORELINEFLOORING.NET](http://WWW.SHORELINEFLOORING.NET)



CARPET · HARDWOOD · LAMINATE · LUXURY VINYL PLANK · TILE PLANK · VINYL · TILE

Largest Flooring Selection in Brunswick County





**HIGH LIFE BUILDERS**

JOEY FOWLER 910-352-6557  
HIGHLIFEBUILDERS@YAHOO.COM



# YOUR LOCAL FURNITURE FAMILY!

CUSTOM HOME  
*Furniture Galleries*

3514 S College Rd, Wilmington, NC  
www.shopcustomhome.com  
910-799-4010



Thanks, it's custom.

CUSTOM HOME  
**niche.**  
DECOR & GIFTS

3501 Oleander Dr #11, Wilmington, NC  
www.nichebycustomhome.com  
910-769-8839



Your one stop shop.



Let's get staged!

CUSTOM HOME  
*Staging & Design*

www.customhomestaginganddesign.com  
910-399-4017



It's yours today!

CUSTOM HOME  
**FURNITURE OUTLET**

2062 Olde Regent Way, Leland, NC  
www.shopcustomhomeoutlet.com  
910-399-4229

SERVING SOUTHEASTERN NORTH CAROLINA SINCE 1995  





# 15 Magnolia

ST. JAMES PLANTATION  
2786 BREFFIN COURT  
SOUTHPORT NC

## RiverBrook Builders

WWW.RIVERBROOKBUILDERS.COM • 919-263-5401

**\$685,000**

3 BR			2,534 SQ FT
3.5 BA			2 CAR GARAGE



### Features

- Spray foam insulation on exterior walls and roof deck
- Rear porch with vaulted ceiling and Eze-Breeze enclosure
- 10-foot ceilings and 8-foot doors throughout main level
- Custom designed cabinetry
- Stained tongue and groove porch ceilings
- Custom closets throughout
- Zero-entry shower and freestanding tub in primary bath



**Directions:** From the main gate of St. James Plantation, head east on St. James Dr SE for 3.8 mi. At the traffic circle, take the first exit and stay on St James Dr SE for 1.2 miles. Turn left onto Harbormaster Dr SE for 0.1 mi then right onto Breffin Ct. The Magnolia is on the right.



# Hammock

ST. JAMES PLANTATION  
2383 ST. JAMES DRIVE  
SOUTHPORT NC

# 16

## Barker & Canady Custom Homes

WWW.BARKERCANADY.COM • 910-509-2014

**Custom Home/Not For Sale**

3 BR			2,893 SQ FT
4.5 BA			2.5 CAR GARAGE

### Features

- Chef's kitchen with high end appliances and spacious walk-in pantry
- Coastal trim throughout
- Incredible open floor plan to host friends
- Beautiful sand and finish hardwood floors
- Custom wood closet shelving
- 300+ square foot walk-in storage
- Spacious master suite with two walk-in closets
- Luxury en suite bathrooms for both guestrooms



**Directions:** From the main gate of St. James Plantation, proceed on St. James Dr past the Marina, and the Hammock is on the left before Brummel Ln.





# 17 Woods Cove

ST. JAMES PLANTATION  
2346 ST JAMES DRIVE  
SOUTHPORT NC

## Hagood Homes

WWW.HAGOODHOMES.COM • 910-256-8284

Custom Home/Not For Sale

4 BR			2,817 SQ FT
3.5 BA			2 CAR GARAGE



### Features

- Charming, custom Lowcountry design
- Executive kitchen with 9.5 by 4 foot island
- 10-foot ceilings, 8-foot doors, and triple pane, 6-foot windows
- Custom closet organizer in primary bedroom
- Jack and Jill guest bath with tile shower
- Four-season room with 8-foot windows and home office
- Trane® 18 SEER XV air conditioner
- Surround sound
- Spray foam insulation



**Directions:** From the main gate of St. James Plantation, continue on St. James Dr. Once past the marina (5.4 mi), Woods Cove is on the right.





**Building  
Homes  
Designed  
for Your  
Future.**

(910) 457-6901  
jsatterwhite.com



**Where do you want to go? We can get you there.**



2023 GMC CANYON

2023 GMC YUKON DENALI



**bellandbell.com**

Toll-free 1-800-635-1693 • 843-399-8300

Hwy 57 & Hwy 9 • North Myrtle Beach / Little River





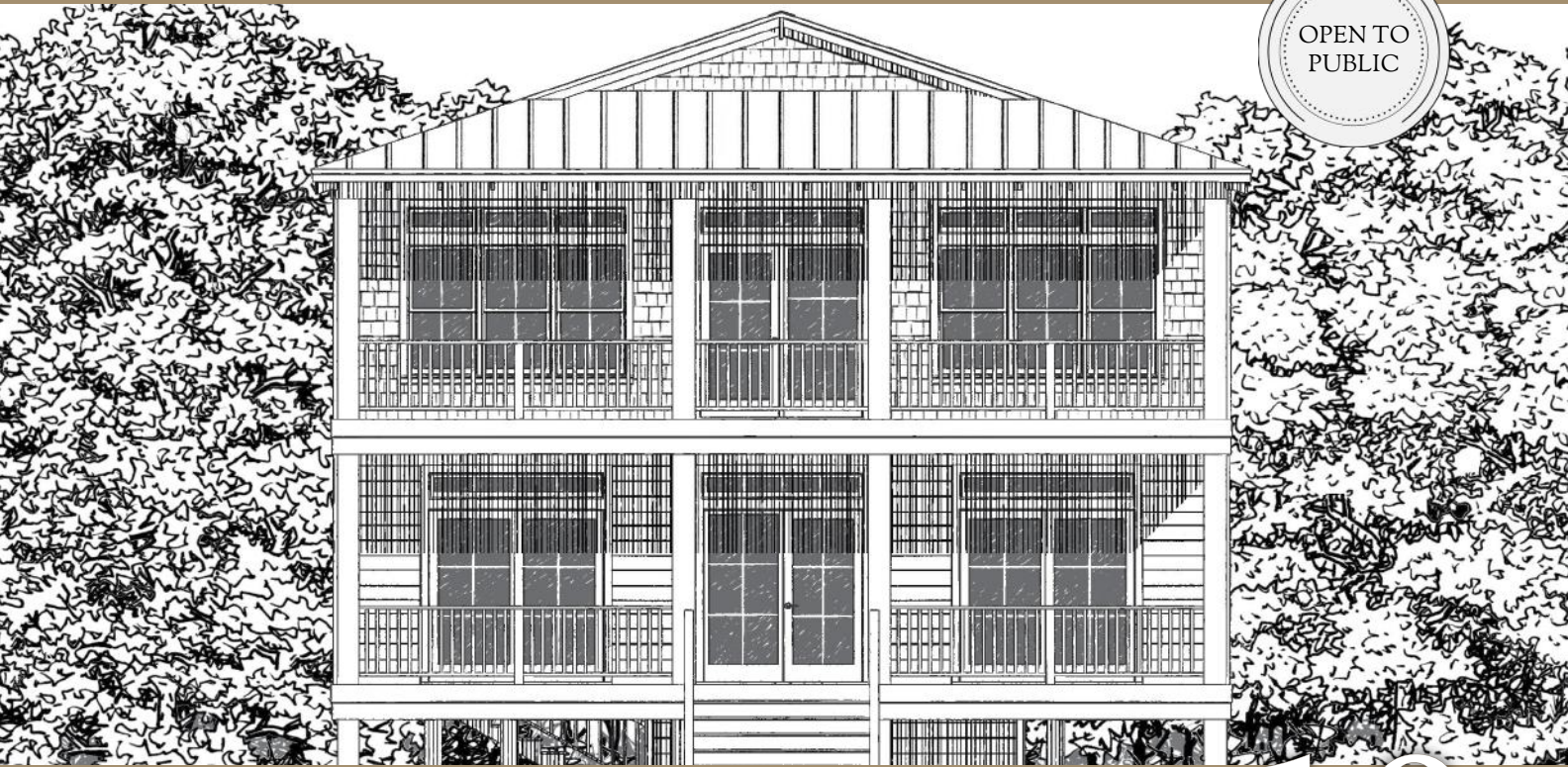
**GUY C. LEE**  
**BUILDING MATERIALS**

*Supplying the Future and  
Preserving the Past Since 1924*

For nine decades, Guy C. Lee has been dedicated to providing quality lumber and building materials. Stop by any of our locations across North Carolina to speak with our friendly sales staff today!

(910) 754-7100 | [guycee.com](http://guycee.com) | 315 Bricklanding Rd. SW Shallotte





# Burns

3916 WEST BEACH DRIVE  
OAK ISLAND NC

# 18

## Joy Construction Company

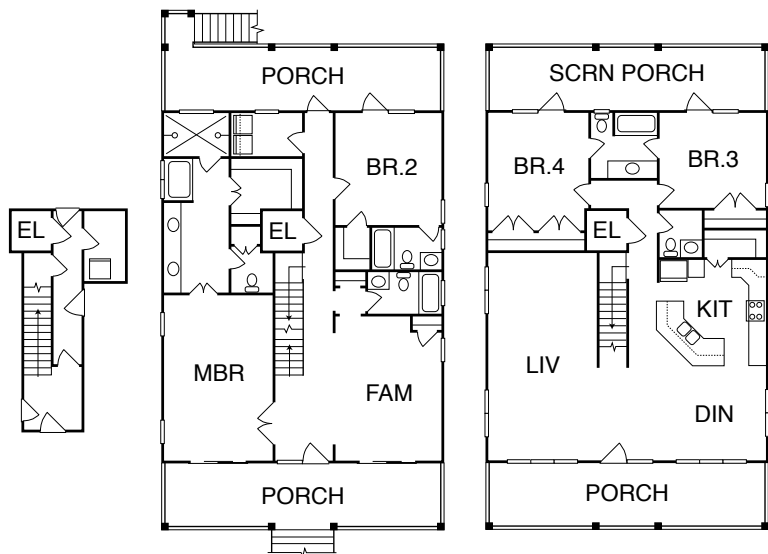
WWW.JOYCONSTRUCTIONCOMPANY.COM • 910-520-5076

**Custom Home/Not For Sale**

4 BR			3,041 SQ FT
5 BA			4 CAR GARAGE

### Features

- Extra large master suite with custom shower and freestanding tub
- State-of-the-art A/V system
- Amazing views of the ocean
- Multi-level decks on the front and rear
- Custom cabinetry throughout



**Directions:** From Hwy 17, take NC-211 S/Southport-Supply Rd and turn right onto NC-906. Next, turn right onto W Beach Dr. The Burns is on the right.



OPEN TO PUBLIC



# 19 Parrish Paradise

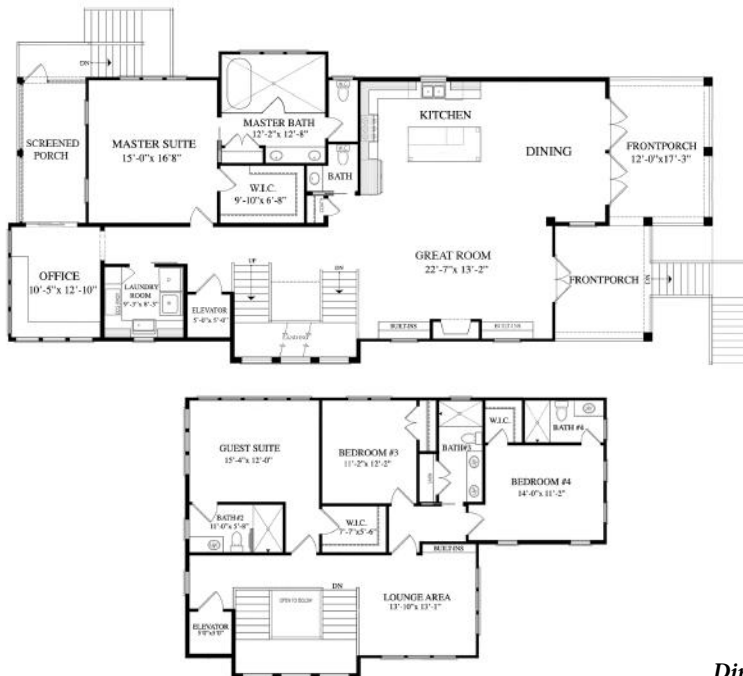
907 E YACHT DRIVE  
OAK ISLAND NC

Centerline Development, Inc.

WWW.GOCENTERLINE.COM • 910-776-0044

Custom Home/Not For Sale

4 BR			3,435 SQ FT
4 BA			2 CAR GARAGE



## Features

- Custom, gourmet kitchen
- Elegant stair tower
- Custom golf cart parking
- Spa-like wet room in primary bath
- Top floor TV lounge
- Tons of covered, outdoor living



**Directions:** From Hwy 17, take NC-211 S/Southport-Supply Rd and turn right onto NC-906. Turn left onto E Oak Island Dr then turn left onto NE 10th St. The Parrish Paradise is on left corner of E Yacht Dr.





# Oak Island Oasis

102 SE 24TH STREET  
OAK ISLAND NC

# 20

## Canady Durako Building Company

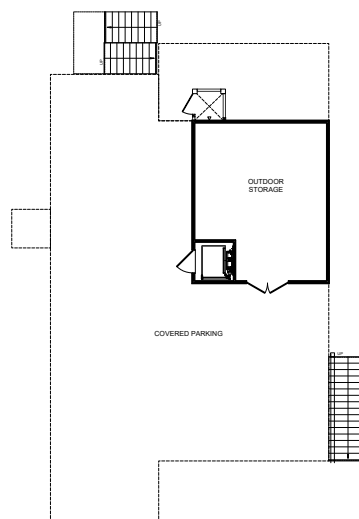
WWW.FACEBOOK.COM/CDBUILDINGCOMPANY • 910-988-9353

**\$799,000**

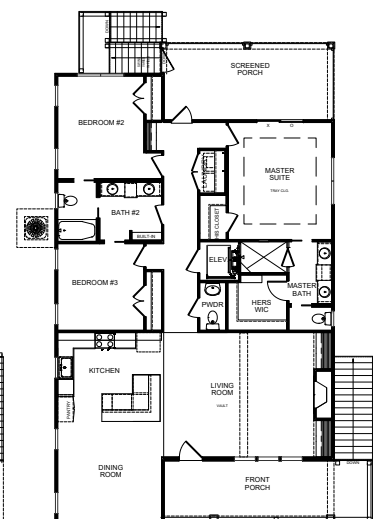
3 BR			1,780 SQ FT
2.5 BA			2 CAR CARPORT

### Features

- Interior elevator
- His and hers master closets with custom built-ins
- Vaulted and tray ceilings
- Hardie® siding
- Screened back porch
- Luxury vinyl plank flooring
- Quartz countertops throughout
- Variable speed HVAC unit
- Custom trim and detail
- Tongue and groove ceilings



**GROUND FLOOR**  
SCALE: N.T.S.



**FIRST FLOOR**  
SCALE: N.T.S.

**Directions:** From Hwy 17 S, turn left on Hwy 211 towards Southport. Turn right onto NC-906/E Middleton Blvd, taking Middleton Bridge to Oak Island. Turn left on E Oak Island Dr. Continue 24 blocks and turn right onto SE 24th St. The Oak Island Oasis is on the left.





# 21 Seaside Manor

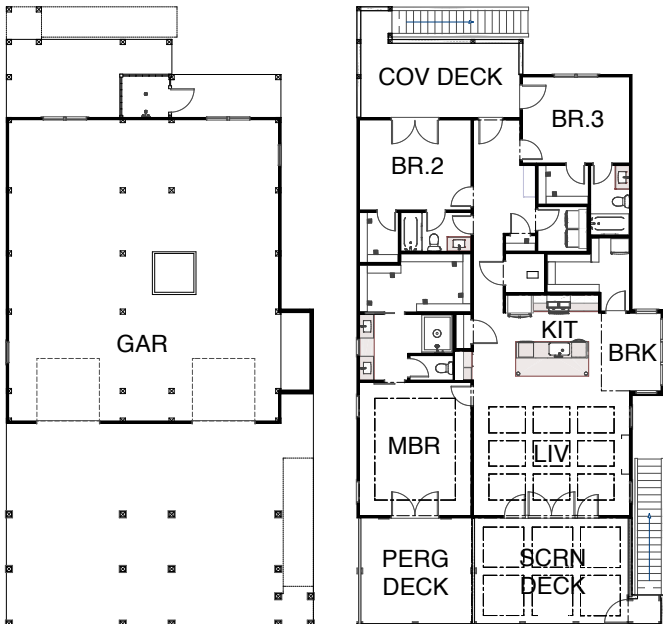
PINNER'S POINT  
2805 W YACHT DRIVE  
OAK ISLAND NC

## SCH Property Development Corp.

WWW.SEACOASTHOMESLLC.COM • 910-933-4381

Custom Home/Not For Sale

3 BR			1,923 SQ FT
3 BA			2 CAR GARAGE



### Features

- Water views
- Screened front porch with coffered ceiling and pergola
- 10-foot ceilings throughout home
- Chef's kitchen
- Custom trim features throughout
- Large pantry with doggy dining cabinet
- Many custom ambient lighting features
- 1,450 square feet of garage and storage



**Directions:** From Hwy 17, take NC-211 S/Southport-Supply Rd. Turn right onto NC-906 and then turn right onto W Oak Island Dr. Turn right onto NW 29th St, then turn right onto W Yacht Dr. Seaside Manor is on the right.





*A Better Way to Build*



## **SCH Development Corp. & SeaCoast Homes, LLC**

*Visit our portfolio of projects or contact our team at:*


[www.seacoasthomesllc.com](http://www.seacoasthomesllc.com)

(910) 933-4381

4961 Long Beach Rd Suite #7  
Southport, NC 28461



# *Winnabow* & LELAND



LELAND SHOPPING DISTRICT | All the entertainment and none of the inconvenience. Many from Brunswick County head to Leland for their shopping needs rather than crossing over the bridge to Wilmington. This energetic region hosts a number of boutiques and restaurants where you can find something for everyone.





SHELTON HERB FARM | Started by a former marine biologist on her family's homestead, Shelton Herb Farm is bursting with herbs, vegetables, fruit trees, and native plants. Visit the farm for one of their events or to get help from their incredible staff finding the perfect plants for your own garden.

LELAND CULTURAL ARTS CENTER | The LCAC hosts a vibrant art scene in Brunswick County. This center offers space for artists to flourish with an expanse of mediums from pottery and painting to theater, literary arts, and more.



PHOTO PROVIDED BY THE TOWN OF LELAND





# 22 Mulberry I

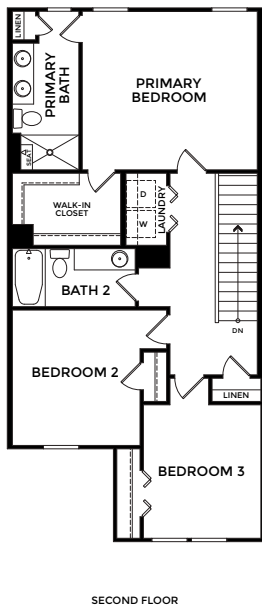
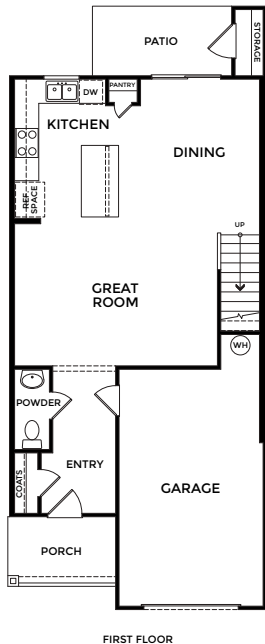
BISHOPS RIDGE  
5013 NORTHSTAR DRIVE  
LELAND NC

## Logan Homes

WWW.LOGANHOMES.COM • 910-636-6701

**\$275,900**

3 BR			1,554 SQ FT
2.5 BA			1 CAR GARAGE



### Features

- Urban-style townhomes
- Open floor plan layout
- Cool coastal color pallet
- Maintenance free living
- Outdoor light package



**Directions:** From Hwy 17, turn right onto Hewett-Burton Rd SE (at Circle K). Turn right immediately onto Hazles Brach Rd SE and go 1.5 miles. Turn left into Bishops Ridge just before Milam Equipment Rental. Turn left onto Northstar Dr and the Mulberry I will be on the left.

OPEN TO PUBLIC



# Southport

8397 PARAMOUNT POINT  
WINNABOW NC

# 23

## Stevens Fine Homes

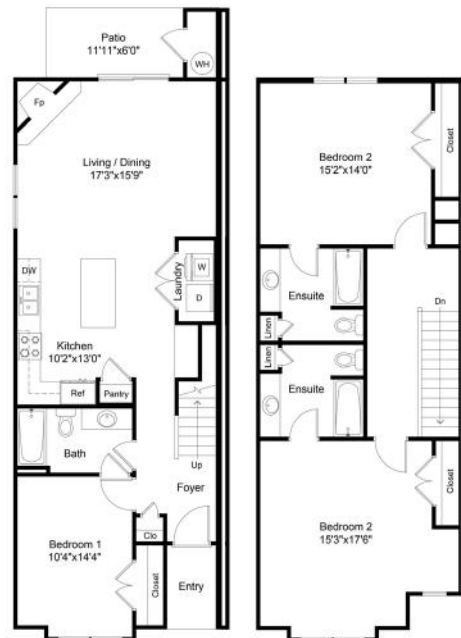
WWW.STEVENSFINEHOMES.COM • 910-431-0085

**\$308,400**

3 BR			1,652 SQ FT
3 BA			NO GARAGE

### Features

- Subway tile backsplash and stainless steel appliances in kitchen
- Quartz countertops and oil rubbed, bronze hardware in kitchen and all baths
- Luxury vinyl plank flooring
- First floor bedroom with attached bath
- Cathedral ceilings on second floor
- Fenced rear patio and outdoor storage
- Community pool and amenities



**Directions:** From Hwy 17, turn onto Brunswick Forest Pkwy and take the second left onto Low Country Blvd. Turn left onto Rice Gate Way, then turn right onto Sovereign Way and take an immediate right onto Pinnacle Pt. Turn right onto Paramount Pt and the Southport is on the right.





# 24 Islander

6520 PINNACLE POINT  
WINNABOW NC

## Stevens Fine Homes

WWW.STEVENSFINEHOMES.COM • 910-431-0085

**\$372,400**

3 BR			1,504 SQ FT
2 BA			2 CAR GARAGE



### Features

- Stainless steel appliances and subway tile backsplash in kitchen
- Quartz countertops and oil rubbed, bronze hardware in kitchen and baths
- Luxury vinyl plank flooring
- Trey ceiling in living room
- Tile flooring and walk-in shower in owner's suite bath
- Fenced rear yard and screened porch
- Community pool and amenities



**Directions:** From Hwy 17, turn onto Brunswick Forest Pkwy and take the second left onto Low Country Blvd. Turn left onto Rice Gate Way, then turn right onto Sovereign Way and take an immediate right onto Pinnacle Pt. The Islander townhome will be on the right.



Creating  
**Accessible**  
Spaces



Design | Installations | Service

Elevators | Platform Lifts | Stair Lifts | Dumbwaiters

(910) 790-9300 | [www.portcityelevator.com](http://www.portcityelevator.com)





# Safe Haven Security

Home Security Services



**Matt Cote**

774-259-4677  
matthew.cote333@gmail.com

When you choose Safe Haven, you can depend on high-level, forward-thinking men and women committed to creating a home security system tailored to your needs. We look forward to forming real relationships and serving as a solid resource for home security.

Most importantly, we're motivated by keeping you safe.



SCAN ME



# PLANTATION SHUTTERS MANUFACTURED LOCALLY

WE ARE THE FACTORY

Cover french doors, odd shaped windows, sliding glass doors and more.



Your Source For Blinds, Shades & Shutters  
Free Estimate & Installation

**843-280-6877**

9 Hwy. 90 East, Little River  
Mon.-Fri.9-5 | Sat.10-1

Visit Our Showroom!

**AAA**

**BLIND & SHUTTER  
FACTORY**

[AAABlindandShutterFactory.com](http://AAABlindandShutterFactory.com)



# East Coast Moving

910.755.2058 • 866.279.MOVE  
[www.eastcoastmovingllc.com](http://www.eastcoastmovingllc.com)

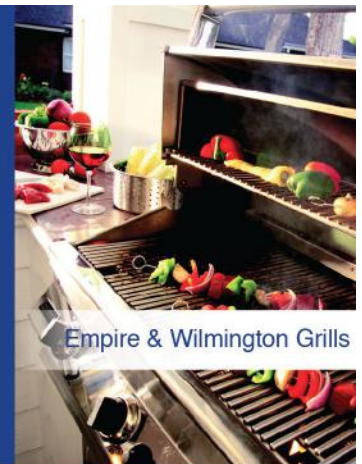
Relax, we'll make it a  
*Smooth Move*



Woman Owned & Operated Since 2003 | Fully Licensed & Insured  
NCUC-2332 • MC-469689 • US DOT 1172302

**Blossman**  
Gas & Appliance

Propane Delivery, Appliances, and Service



Empire & Wilmington Grills



Rinnai Tankless Water Heaters

3465 Southport-Supply Rd SE  
Bolivia, NC 28422  
(910) 754-8788



# Bismark

BRUNSWICK FOREST  
3210 CALUSA COVE  
LELAND NC

# 25

## Legacy Homes by Bill Clark

WWW.BILLCLARKHOMES.COM • 910-269-6252

**\$819,595**

2 BR

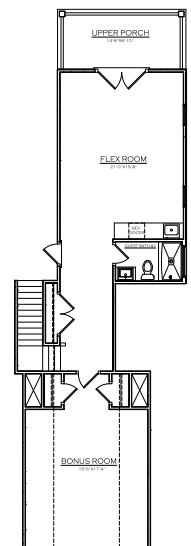
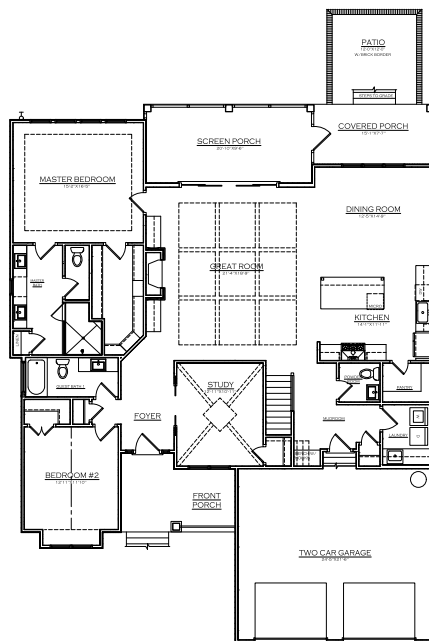
3,089 SQ FT

3.5 BA

2 CAR GARAGE

### Features

- Second floor bonus room with closets and flexroom with wet bar
- Second floor covered porch
- Rear screened porch
- Great room with coffered ceiling
- Fireplace with built-ins and floating mantle
- Kitchen with custom cabinet hood
- Formal study with coffered ceiling
- Board and batten wainscoting throughout



**Directions:** From Hwy 17, turn onto Brunswick Forest Pkwy. Turn left onto Low Country Blvd and turn right onto Cape Fear National Dr. Turn right onto Colony Pines Dr, then turn left onto Creswell Dr. Next, turn right onto Cobleskill Dr and the Bismark is on the right.





# 26 Catawba

BRUNSWICK FOREST  
3243 CALUSA COVE  
LELAND NC

Trusst Builder Group

WWW.TRUSTTBUILDERGROUP.COM • 910-371-0304

\$689,500

3 BR			2,947 SQ FT
3.5 BA			2 CAR GARAGE



## Features

- Courtyard garage with covered front porch
- Open concept living, family, and dining rooms featuring tray ceilings
- Spacious first floor primary suite
- Large screened porch
- First floor guest suite
- Study with coffered ceiling
- Upstairs bonus room with access to an upper balcony



**Directions:** From Hwy 17, turn onto Brunswick Forest Pkwy. Turn left onto Low Country Blvd and right onto Cape Fear National Dr. Then, turn right onto Colony Pines Dr and left onto Creswell Dr. Turn right onto Cobleskill Dr, then right onto Calusa Cove. The Catawba is on the left.



# Copperwynd

BRUNSWICK FOREST  
4175 COBLESKILL DRIVE  
LELAND NC

# 27

## Liberty Homes

WWW.LIBERTYHOMESANDBUILDING.COM • 910-397-2777

Custom Home/Not For Sale

4 BR			3,266 SQ FT
3 BA			2 CAR GARAGE

### Features

- Custom kitchen cabinetry
- Craftsman trim package
- Vaulted ceiling in lanai
- Custom master bedroom closets
- Stick built framing and large attic
- Large stamped concrete patio
- 20-foot ceilings
- Master bath with Roman shower



**Directions:** From Hwy 17, turn onto Brunswick Forest Pkwy. Turn left onto Low Country Blvd and right onto Cape Fear National Dr. Turn right onto Colony Pines Dr and remain straight onto Cobleskill Dr. The Copperwynd is on the right.





# 28 Summerlyn II

COMPASS POINTE  
2584 SEA ISLAND DRIVE NE  
LELAND NC

## Liberty Homes

WWW.LIBERTYHOMESANDBUILDING.COM • 910-397-2777

Custom Home/Not For Sale

5 BR			4,236 SQ FT
3.5 BA			3 CAR GARAGE



### Features

- Lighted double tray ceilings
- Vaulted family room with craftsman exposed stained beams
- Open kitchen with quartz countertops and upgraded kitchen tile
- Central whole home vacuum system
- Multi-level patio with built-in firepit
- Double bonus room with rear covered balcony
- Master bath walk through to laundry



**Directions:** Take US-74/76 towards Whiteville. Turn right at Compass Pointe's West entrance gate (Compass Point South Wynd NE). Turn left onto Sea Island Dr and the Summerlyn II is on the left.





# Harbor Town III

COMPASS POINTE  
8604 TIMBER HILLS DRIVE  
LELAND NC

# 29

## Hagood Homes

WWW.HAGOODHOMES.COM • 828-638-6720

**Custom Home/Not For Sale**

4 BR			2,881 SQ FT
3.5 BA			2.5 CAR GARAGE

### Features

- Unique Lowcountry designed home
- Stunning roof, ceiling details, and two-story foyer
- Open floor plan with kitchen sink on outside wall
- En suite master bath with walk-in shower and California Closets
- Covered balcony on second floor
- Oversized garage
- Spray foam attic and exterior walls



**Directions:** Take US 74/76 towards Whiteville. Turn right at Compass Pointe's West gate and stay left at the guardhouse. Turn right onto Safflower Way, cross the wooden bridge, and from the traffic circle turn right onto E Timber Crest Dr. The Harbor Town III is on left corner of E Timber Crest and Timber Hills Way.





# 30 Cape Lookout

**THE BLUFFS**  
 9147 FALLEN PEAR LANE NE  
 LELAND NC

## Hagood Homes

WWW.HAGOODHOMES.COM • 828-638-6720

**\$754,721**

4 BR			2,522 SQ FT
3.5 BA			2.5 CAR GARAGE



### Features

- Airy, open floor plan with tons of light
- Spray foam insulation ecoSelect and HERO certified
- Chef's kitchen with quartz countertops
- Master suite with tiled zero-entry shower
- Oversized two car garage
- Large pantry
- Spacious front porch and screened back porch
- 8-foot tall doorways and 10-foot ceilings



**Directions:** Take Hwy 74/76 W towards Leland to Mt. Misery Rd. Exit right and continue about 3 miles, turning right onto Dogwood Rd NE. After the train tracks, turn right onto Strawberry Hill Dr. Approach guardhouse and stay left, exiting the traffic circle onto Fallen Pear Ln. Cape Lookout is on the right toward the end of the road.



COASTAL LIFESTYLE.  
NATURAL BEAUTY.  
LUXURIOUS AMENITIES.

the  
**lakes**  
AT PINE FOREST



**The Lakes at Pine Forest** is an elegant, single-family neighborhood just minutes from the pristine beach of Oak Island and America's Happiest Seaside Town, Southport. Residents enjoy a luxurious coastal lifestyle in a master-planned community offering easy access to recreational amenities and onsite medical campus; all minutes away from local shops and restaurants.

Our homes, including complete lawn maintenance, are designed and constructed by two of the region's finest builders – Trusst Builder Group and Legacy Homes by Bill Clark.

**MODEL HOMES** | OPEN MONDAY – SATURDAY  
10AM – 5PM



*For More Information*

CONTACT **DEBBIE WILLIAMS** AT 910.338.2793 OR VISIT [PINEFORESTOAKISLAND.COM](http://PINEFORESTOAKISLAND.COM)





# YOUR HOME, *just smarter*



## Security with Smart Home Solutions

- 24/7 Home Security and Video Monitoring
- Remote access for lights, locks, thermostat and garage door

Call for a free quote!

**888.789.0649**

**[focusbroadband.com/security](http://focusbroadband.com/security)**

Security by

**FOCUS**  
BROADBAND

Security by FOCUS Broadband services may require compatible monitoring plan, equipment, internet connection, agreement and mobile device with Alarm.com app. Equipment sold separately. Other conditions and restrictions may apply.



# Virtual TOURS

FROM THE COMFORT OF YOUR COUCH | Technology has brought a whole new dimension to the Parade of Homes. While all of our entries are viewable online, the following entries are virtual-only. These homes may not be open to the public, but their owners have invited you in for a sneak peek at their stunning, custom-built abodes.





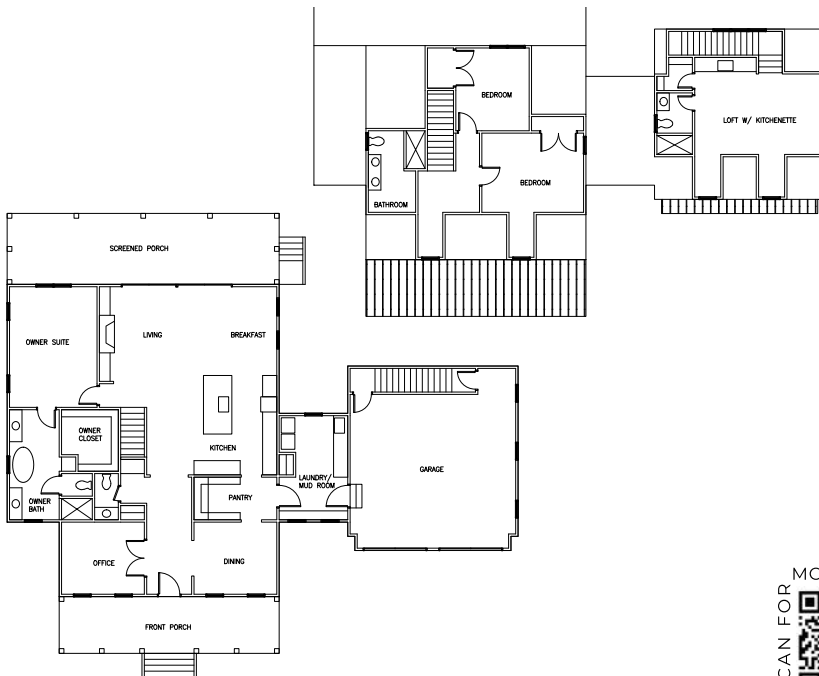
# 31 River Sunsets | CALABASH NC

Ollo

WWW.OLLO.ENERGY • 704.776.6057

Custom Home/Not for Sale

4 BR			2,815 SQ FT
3.5 BA			2 CAR GARAGE



## Features

- Open floor plan maximizes river sunsets
- Chef's kitchen with designer appliances and custom hood
- Bespoke trim including shiplap, wainscoting, and fireplace surround
- Screened porch with 16-foot slider for coastal living
- Zero-entry shower
- Saltwater pool with paver surround
- Laundry with built-in storage bench





# West Indies Whisper

SOUTHPORT NC

# 32

## True North Building Company

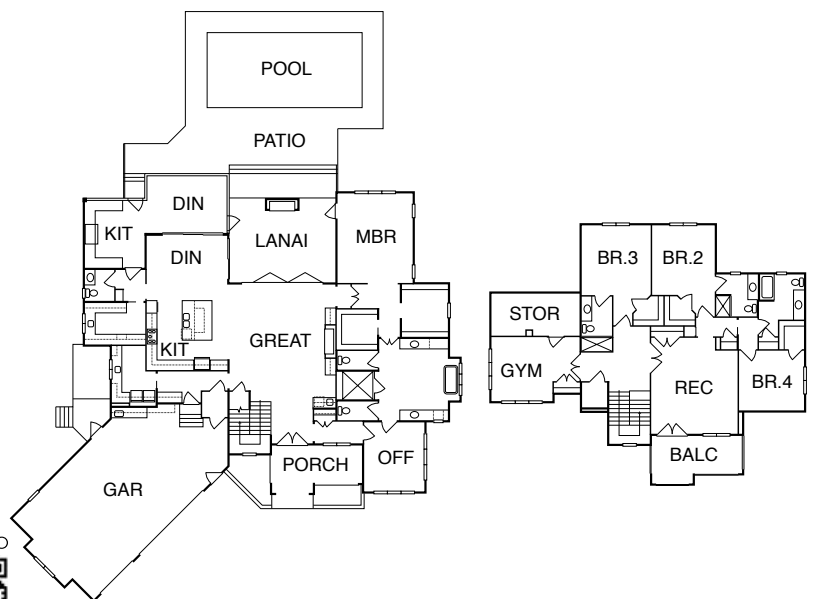
WWW.TRUENORTHBUILD.COM • 910-294-1098

**Custom Home/Not for Sale**

4 BR			4,606 SQ FT
5BA			3 CAR GARAGE

### Features

- Custom cabinetry throughout
- Custom millwork
- Oversized chef's pantry with wine fridge
- Two fireplaces
- La Cantina folding doors
- Stucco and stone exterior
- Bespoke closet systems
- Expansive outdoor living space with kitchen
- In-ground pool



Scan the QR code with your phone's camera for more info about this property.





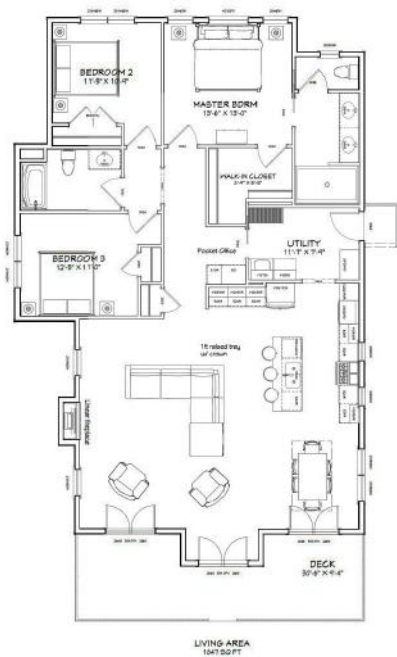
# 33 Jennifer | OAK ISLAND NC

Southern Comfort Homes, Inc.

WWW.SCHOMESNC.COM • 910-454-8604

Custom Home/Not For Sale

3 BR			1,859 SQ FT
2 BA			2 CAR GARAGE



## Features

- Striking, piling home with ICW views
- Rocking chair front porch with Trex® decking
- Triple front entry doors open to beamed living room, dining, and kitchen
- Crisp, white interior finishes
- Wood toned, luxury vinyl plank flooring
- Cottage trim
- Large utility room
- Under home parking, storage, and outdoor shower





# Key To Paradise | OAK ISLAND NC

# 34

## Moffitt Builders, Inc.

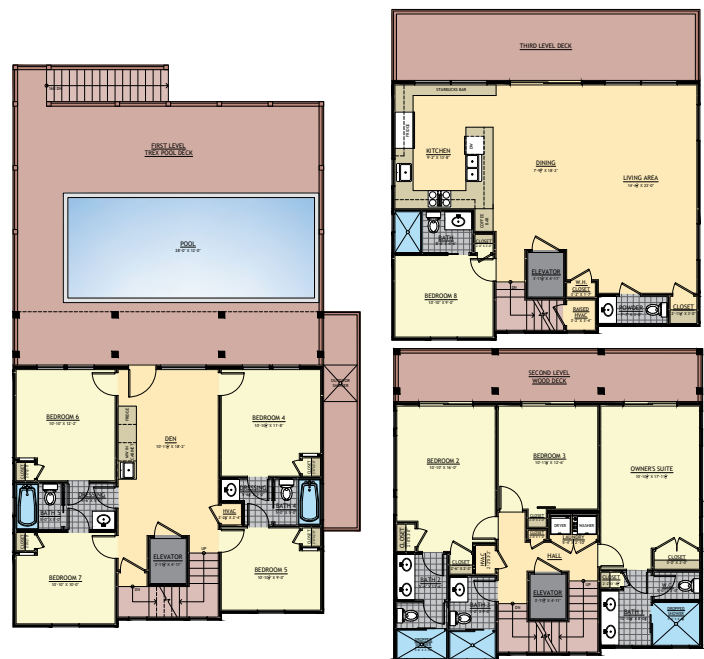
MOFFITTBUILDERS.COM • 910-805-1339

**Custom Home/Not for Sale**

8 BR			2,677 SQ FT
6.5 BA			0 CAR GARAGE

### Features

- Oceanfront property
- Heated pool on an elevated deck
- Custom lit tray ceilings
- Wainscoting and shiplap throughout
- Café appliances with built-in Keurig and cocktail ice maker
- Starbucks bar
- Elevator
- Wine and beer fridge



Scan the QR code with your phone's camera for more info about this property.



Bring in this ad for a 10% discount!



Located at  
1100 Sabbath Home Road, right next to Foodlion

 The Coastal Gem Beach House  [thecoastalgem.hb](https://www.instagram.com/thecoastalgem.hb)

# We've Got You Covered

Auto, Home & Business Insurance



**COASTAL INSURANCE**  
Serving Brunswick County Since 1948  
4625 Main St. Shallotte, NC 28459  
(910) 754-4326



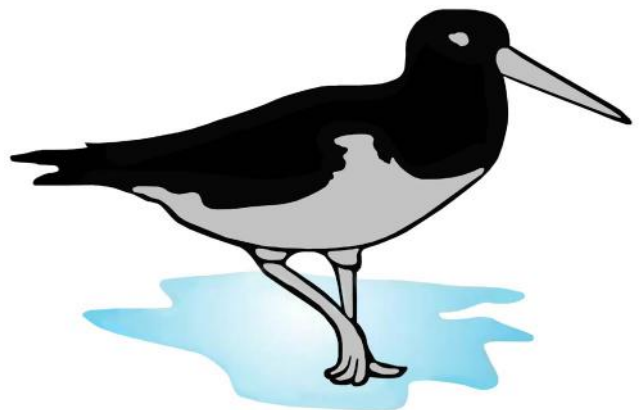
[WWW.COASTALINSURANCE.NET](http://WWW.COASTALINSURANCE.NET)



 **CRANE BUILDING COMPANY** INC  
fine custom homes

[CRANEBUILDINGCOMPANY.COM](http://CRANEBUILDINGCOMPANY.COM) • 910-3634070

# SANDPIPER



## Heating & Air Conditioning, LLC

944 Carter Drive, Calabash, NC 28467  
211 Hwy 17 N. Suite 101, North Myrtle Beach, SC  
**910-579-1497 or 843-385-7263**



# HAVE YOUR CAKE & EAT IT, TOO

Who says you have to choose between growing your business and simplifying it? Vivid is a full service, digital marketing and design agency focused on the unique needs of small businesses. Our team offers an array of marketing services to increase your business performance and simplify your workflow.

Keep doing what you do best, and leave the rest to us.



[vividdigitalmedia.com](http://vividdigitalmedia.com) | 910.920.0291 | [info@vividdigitalmedia.com](mailto:info@vividdigitalmedia.com)

 [@vividdigitalmediaNC](https://www.facebook.com/vividdigitalmediaNC)  [@vividdigitalmedia](https://www.instagram.com/vividdigitalmedia)





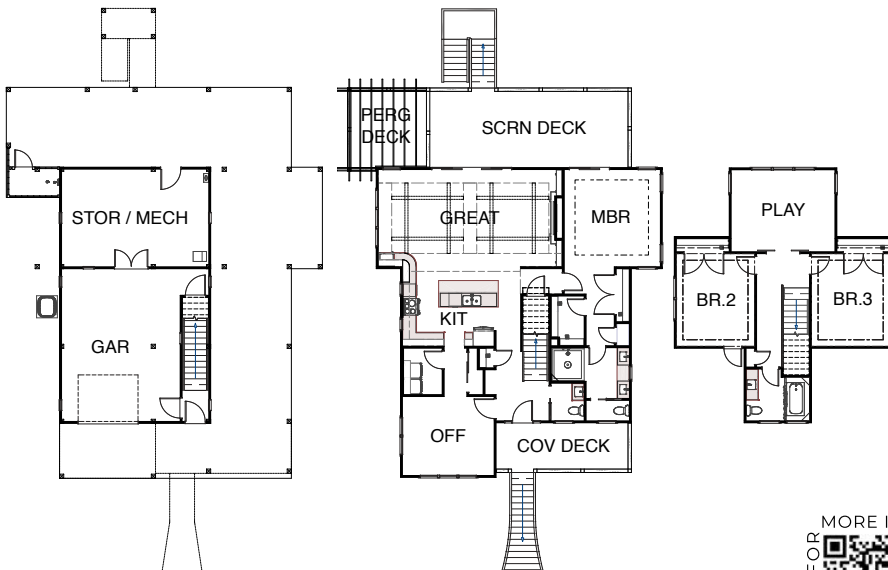
# 35 Ashley's Retreat | CASWELL BEACH NC

SCH Property Development Corp.

WWW.SEACOASTHOMESLLC.COM • 910-933-4381

Custom Home/Not for Sale

3 BR			2,453 SQ FT
2.5 BA			1 CAR GARAGE



## Features

- Expansive, outdoor living on golf course
- Spacious, open floor plan
- Large kitchen with custom island
- Upgraded trim throughout
- Light filled home office
- Custom finished bonus room





# Sleepy Hollow

SOUTHPORT NC

# 36

## Schiano Development

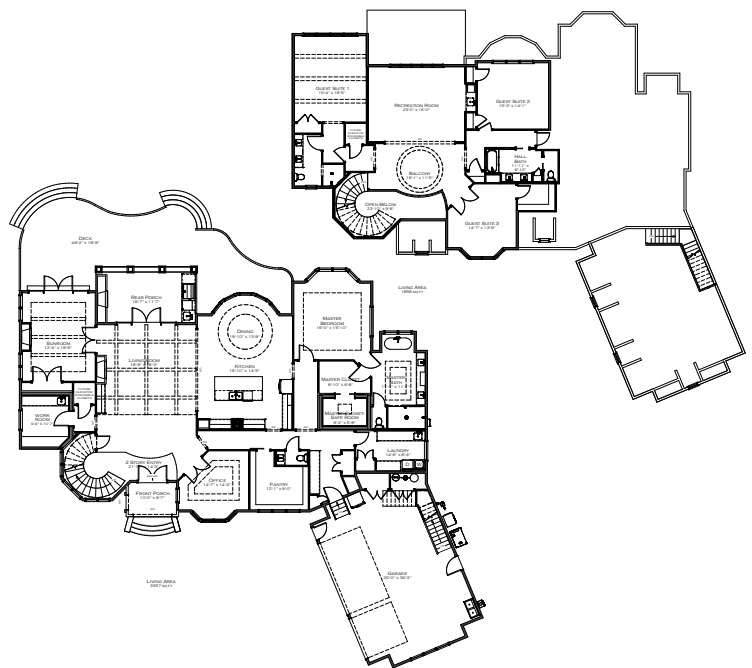
WWW.SCHIANODEVELOPMENT.COM • 631-774-6663

**Custom Home/Not for Sale**

4 BR			5,200 SQ FT
3.5 BA			3+ CAR GARAGE

### Features

- French European architecture and custom millwork
- Pella Reserve aluminum clad windows
- TruStile interior doors, custom cabinetry, and quartzite countertops
- Spiral staircase and three fireplaces
- Floor to ceiling glass in rotunda
- Bunk room
- Curved composite deck
- 8-inch wide French oak hardwoods



Scan the QR code with your phone's camera for more info about this property.





# 37 Turtle Cove | WINNABOW NC

## Richmond Homes

WWW.RICHMONDHOMESNC.COM • 910-859-9571

Custom Home/Not for Sale

4 BR			2,500 SQ FT
4 BA			2 CAR GARAGE



1ST FLOOR PLAN

2ND FLOOR PLAN

### Features

- Modern farmhouse design
- Vaulted ceiling in living room
- Backyard oasis with large pool and hardscaping
- Guest suites with separate baths
- Designer tile and lighting
- Walk-in pantry
- Home office
- Large bonus room





Three Generations Strong!



David L.

**BIANCHI**

**Brickyard & Landscape  
Supply, Inc.**

SOUTHPORT, NC | WINNABOW, NC  
(910) 454-4445 | (910) 253-7663

- Brick
- Stone
- Block
- Mulch
- Gravel
- Pavers
- Topsoil
- Rebar

[BianchiBrickyard.com](http://BianchiBrickyard.com)



**STRAND**  
TERMITE & PEST CONTROL

Residential & Commercial  
Moisture Control

[STRANDPEST.COM](http://STRANDPEST.COM) | (910) 579-9707

**BRUNSWICK COUNTY  
CHAMBER OF COMMERCE**

*Building Community and Supporting Business*

**Learn More About What The  
Chamber Can Do For Your Business**

**Thursday Perks Works**

**Networking Meeting**

**Brunswick Electric Membership Corporation**

**1st Thursday Of Each Month**

Office: (910) 754-6644

112 Pine Street

Shallotte, NC 28470



[brunswickcountychamber.org](http://brunswickcountychamber.org)

SCAN ME!



MODERN LIVING THAT ENDURES



Visit Our Showroom  
7am-4pm  
MON-FRI

**General Shale**

3750 HWY 421 South  
Wilmington, NC 28401  
(910) 452-3498  
[GENERALSHALE.COM](http://GENERALSHALE.COM)





# You found the one. Now protect it.

## Pay only for the protection you want.

Finding the right home can be a lot of work, but adding the right coverage is easy with Allstate House & Home<sup>®</sup> Insurance. I can help you customize a policy for your home and **save an extra 10%** for signing up now.

Plus, when you bundle your home and auto policies, you can save even more. Call me or stop by my office for a free quote.



**Toby Russ**  
**910-754-6596**  
4746 MAIN ST  
SHALLOTTE  
[toby russ@allstate.com](mailto:toby russ@allstate.com)



**Allstate**<sup>®</sup>  
You're in good hands.

Call or stop by for a free quote.



# Renovations & ADDITIONS

2023 RENOVATION ENTRIES | Each year, the Brunswick County Parade of Homes renovation entries offer up jaw-dropping transformations and endless inspiration for indoor and outdoor living. The following group of entries are viewable online via virtual tour and showcase the talent, resourcefulness, and creativity of each renovator.





After

After



Before



Before



After



After



# Happy Cooking in Calabash

## Braddock Built Renovations

WWW.BRADDOCKBUILT.COM • 910-754-9635

**CALABASH NC**

*This renovation began with a cottage tucked in the woods featuring a dark, poorly laid out kitchen. A masterfully designed kitchen renovation makes this house feel like an entirely new home. Braddock Built Renovations designed and installed this kitchen with classic white cabinetry, stunning quartz countertops, high end appliances, and elegant lighting. Storage was expanded and the overall kitchen broadened with multiple recessed, built-in cabinets, including under the stairs where space had previously gone unused. Toe kick lighting was also included along the base of the cabinetry for a modern and elevated accent. These clients now love to cook!*







After



After



Before



Before



After



## I Love My Porch

### WindowZ, Inc.

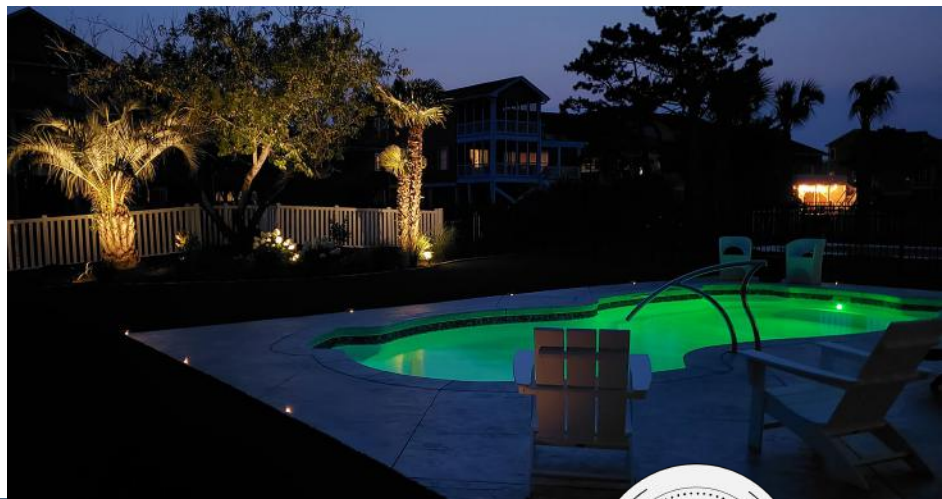
WWW.WINDOWZINC.COM • 910-575-3717

SUNSET BEACH NC

*For this beautiful sunroom renovation, porch space was expanded from 104 to 560 square feet (approximately 24x24 foot). The clients of this home wanted to keep a “porch feel” for the space, which lead to the use of Eze-Breeze windows and knee walls to provide a finished look as well as protection from grandchildren, dogs, and furniture. A mini-split makes this a year-round space with perfect views of the pool and natural landscape behind the home. Great care was taken to ensure that all windows were easy to raise and lower with high quality framing. WindowZ, Inc., a locally and family owned business, was able to support the clients timeline and provided swift on-site service for the project. With a brand new space in their home, this client can’t stop telling everyone “I Love My Porch”!*







## Driftwood



## Prestige Outdoor Lighting

WWW.PRESTIGEOUTDOORLIGHTING.COM • 910-754-5483

OCEAN ISLE BEACH NC

*This lighting renovation is a redesign and upgrade for a home that burned down during a hurricane in 2020. The owners wanted a completely new design to compliment the new contemporary style of the home. For the house, Prestige Outdoor Lighting focused on highlighting the architecture of the house from top to bottom along with providing a safe way to walk up and down the stairways after dark. They installed under counter lighting in the outdoor kitchen, with separate switch controls from the other spaces. For the landscaping, Prestige highlighted the palm trees in the front yard and the planting bed in the backyard. They also installed soft, in-concrete lighting around the pool deck in order to highlight the perimeter of the area.*







After



Before



After



Before



After



## Chefs' Expansion

# Braddock Built Renovations

WWW.BRADDOCKBUILT.COM • 910-754-9635

OCEAN ISLE BEACH NC

*This single story addition was designed and built to allow for expansion of the kitchen with a large, walk-in pantry and relocated powder room. Great care was taken to ensure that the new brick exterior matched the existing brick façade. A load-bearing wall was removed and a hidden structural post was added in the loft above the kitchen. Custom cabinets, quartz countertops, Brazilian cherry floors to match existing hardwoods, glass tile backsplash, and enhanced pantry storage in the addition grace this beautiful estate home. The expansive kitchen is now open with bright, natural light, providing a welcoming space for the customers who are passionate home chefs.*





Helping you is what we do best.

## Real coverage is stronger than the weather.

When it's storm season, there are supplies to purchase and precautions to take to make sure you and your home are as safe as possible. But to really weather the storm, you need real strength. With home coverage from Farm Bureau® Insurance, you can rest assured that no matter how strong the winds – your coverage is stronger. Talk to your local Farm Bureau Insurance Agent today.

**(910)754-8175**

**Brunswick County**

4560 White St.

Shallotte, NC 28459

An Authorized Agency for



BlueCross BlueShield  
of North Carolina



**ncfbins.com**

Auto • Home • Life • Health • Bank

NC16M194702

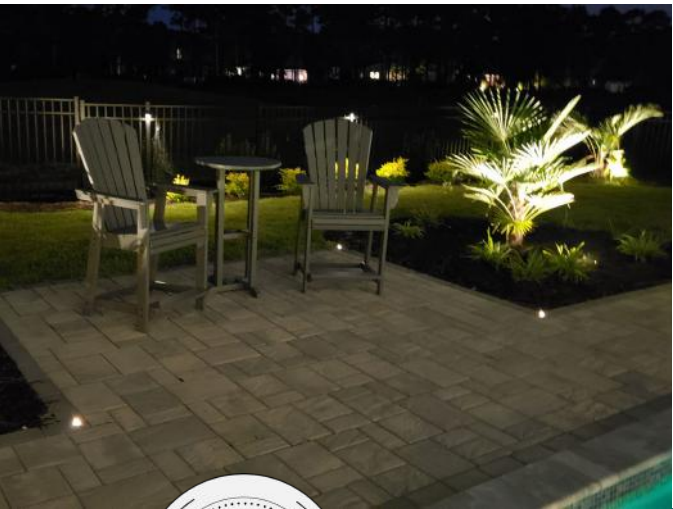
\*North Carolina Farm Bureau® Casualty Insurance Company \*North Carolina Farm Bureau® Mutual Insurance Company \*Southern Farm Bureau® Casualty Insurance Company \*Southern Farm Bureau® Life Insurance Company

WHERE INNOVATIVE IDEAS TRANSFORM INTO CREATIVE DESIGNS



RESIDENTIAL BUILDING DESIGN

www.cima-design.com 910.805.2462 chris@cima-design.com



Laurel

## Prestige Outdoor Lighting

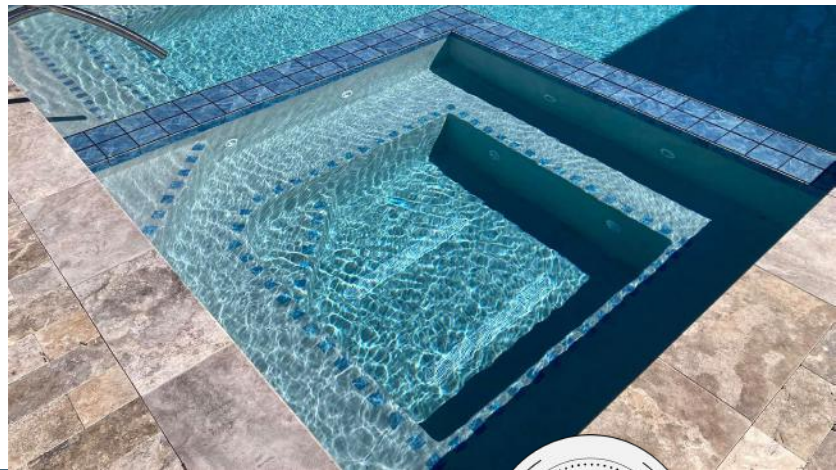
WWW.PRESTIGEOUTDOORLIGHTING.COM • 910-754-5483

SHALLOTTE NC

*This lighting system design and installation is an end of build upgrade to the construction of a new home. The clients have enjoyed the outdoor lighting at several previous homes and wanted to take the lighting at this home to a level that would enhance the beauty, while also providing a resort-like feel to their backyard. The clients provided Prestige Outdoor Lighting with a detailed sketch of what they envisioned. From there, the team at Prestige was able to accomplish the clients goals while elevating the design to include additional features. When the design of the backyard space evolved, Prestige made changes to the lighting plan in order to enhance the new design.*







## St. James 'Stay-cation'

EXTERIOR  
RENOVATION

### Carolina Creations Landscapes Inc.

WWW.CAROLINACREATIONS.BIZ • 910-755-6411

**SOUTHPORT NC**

*This custom residential concrete pool, in Southport North Carolina, features a built in spa and a hidden retractable auto cover system.*

*The hardscape team from Carolina Creations Landscape installed a large travertine patio and the landscape team installed privacy plantings. Now, the homeowners can enjoy this space in the comfort and privacy of their new backyard.*







Before



After



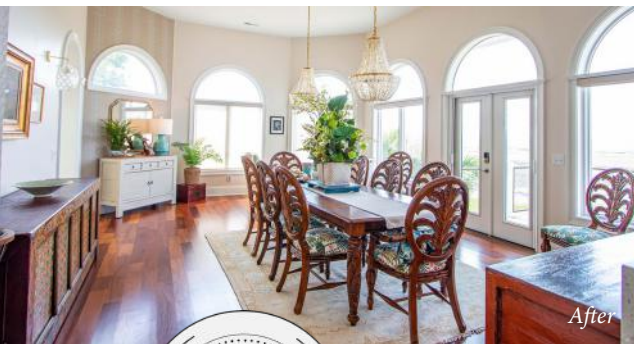
Before



After



After



After



After



## Salt Marsh Cottage

# Kelley Construction Services, LLC

WWW.KELLEY-CON.COM • 910-477-7711  
OAK ISLAND NC

*This is a beautiful whole home remodel sitting on a property with 210 degrees of expansive ICW views. This magnificent home boasts a unique blend of eclectic styles that came together perfectly. This renovation included two additions that were previously exterior spaces, repurposed into a foyer and office. The scope of this renovation involved updating the kitchen, overhauling three bathrooms, structural reframing, redesigning the flow of spaces, moving the laundry, four California closets, a custom library, replacing all flooring and trim, modernizing a fireplace, painting, and interior decorating. Two new Trex® decks on the exterior, new cedar shake, PVC board, and baton siding were also installed. The roof was replaced with pitches modified to allow for better water runoff. To bring together the coastal living experience, exterior doors were added and select windows replaced. If you're limited on time, "The Salt Marsh Cottage" is a must see experience during this years Parade of Homes.*





3-TIME  
HBA BUILDER  
OF THE YEAR



# ELITE HOMES

BY FORREST TAYLOR

**W**hen Forrest Taylor founded Elite Homes in 1990, his goal was to build some of the best and most beautiful custom homes in the coastal Carolinas. Now a seasoned builder with deep roots in Brunswick County, he's done just that. With over three decades of experience, Forrest's commitment to his craft and the community is unwavering. At Elite Homes, Forrest and his team specialize in crafting personalized, upscale homes that fulfill their clients' unique needs. Forrest is not just a builder, he's a dedicated member of the South Brunswick Islands Home Builders Association, where he has previously served as president, and holds two unlimited general contractor's licenses

across North and South Carolina. His dedication to quality, strength, and craftsmanship is evident in every home he creates. Forrest and his wife, Pam Taylor, share a "get it right the first time" philosophy, and their goal is to build homes they'd be proud to own themselves. The Elite Homes team echoes this sentiment, and they're ready to turn your dream home into a reality. When you choose Elite Homes by Forrest Taylor, you're choosing quality, passion, and a builder deeply committed to your satisfaction. No matter the size or scope of your project, Forrest states, "I respect my clients to such a degree that they feel like family to me. If it's not good enough for us, then it's certainly not good enough for them!"



# LET'S BRING *beauty* TO YOUR HOME

*See why we're the  
Shallotte, NC area's  
most trusted service  
provider*

shoreline  
flooring  
& tile

910.754.2582

COME SEE OUR  
4,000 SQUARE FOOT  
SHOWROOM

214 Village Rd SW  
Shallotte, NC 28470

RECENTLY  
COMPLETED HOME  
IN BRUNSWICK  
COUNTY

## SERVICES

CARPET BINDING · CARPET RE-STRETCH · COMMERCIAL INSTALLATIONS · CUSTOM AREA RUGS · DESIGN CONSULTATION  
FLOORING REPAIRS · HARDWOOD REFINISHING · RESIDENTIAL INSTALLATION · OUTDOOR INSTALLATIONS  
SETTING MATERIAL · SUBFLOOR REPAIR · UNDERLAYMENT · BACKSPLASH · BATH & SHOWER TILE

[WWW.SHORELINEFLOORING.NET](http://WWW.SHORELINEFLOORING.NET)





2023 BRUNSWICK COUNTY  
PARADE OF HOMES  
SPONSORS

The Brunswick County Home Builders Association would like to extend a special thank you to our 2023 Parade of Homes sponsors, who make our event possible. Please provide generous support to the organizations below. They support the Brunswick County Home Builders Association and our industry year-round.

