

C/SS/IV

FLOOR PLANS

OAKWOOD N14

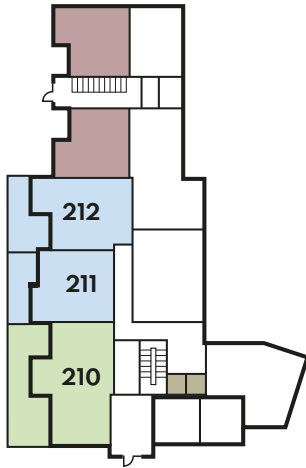
Site plan



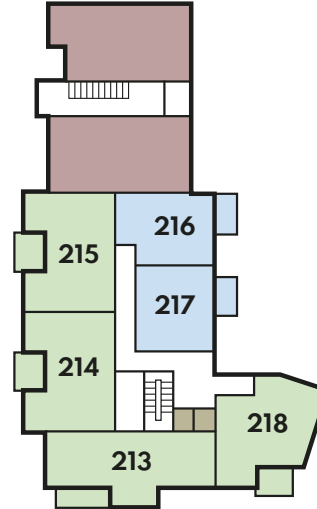
Plot locators



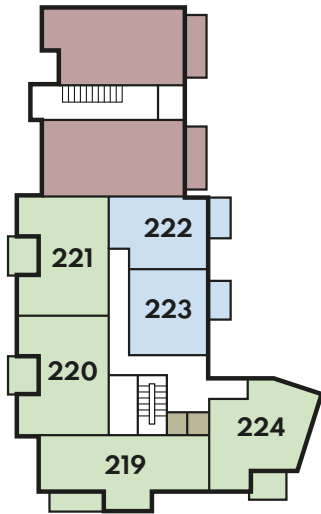
Ground Floor



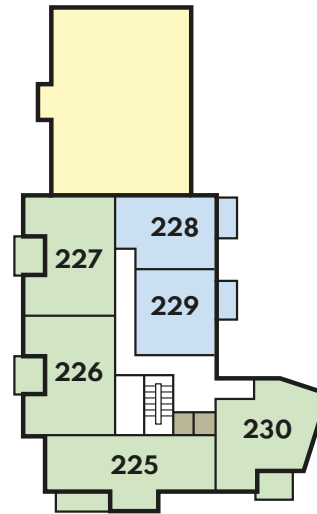
First Floor



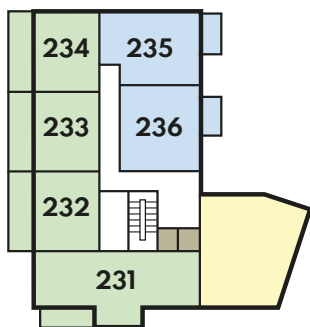
Second Floor



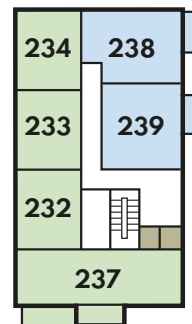
Third Floor



Fourth Floor



Fifth Floor



Key

- 1 bedroom homes
- 2 bedroom homes
- Private ownership
- Lifts
- Roof*

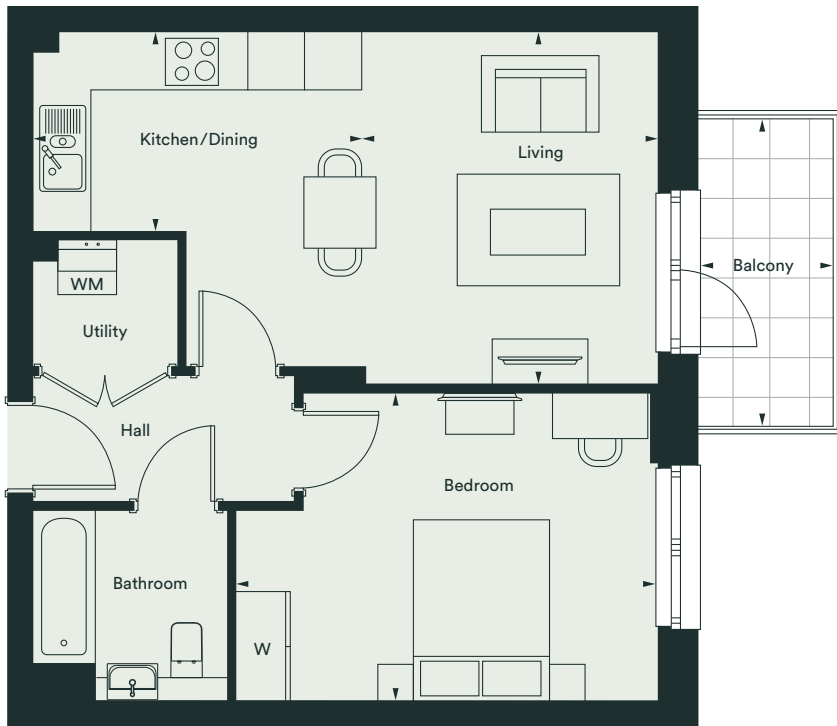
* Roof area is not accessible to residents

Important notice: this brochure and the description and measurements herein do not form part of any contract and whilst every effort has been made to ensure accuracy, this cannot be guaranteed. Prospective purchasers should not rely on this information but must get their solicitor to check the plans and specification attached to their contract. These particulars are believed to be correct at time of publishing but this cannot be guaranteed. Appliance locations may vary in certain apartments. Plans not to scale.

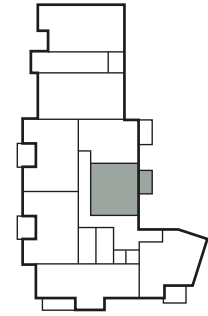
One bedroom apartment - 51.1 m²



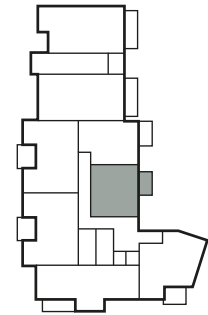
- Plot 217 Flat 8
- Plot 223 Flat 14
- Plot 229 Flat 20
- Plot 236 Flat 27
- Plot 239 Flat 30



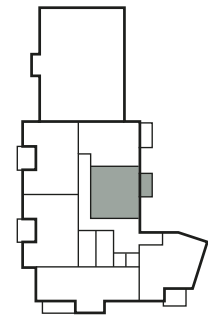
First Floor
Plot 217



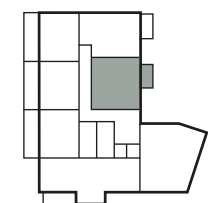
Second Floor
Plot 223



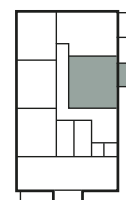
Third Floor
Plot 229



Fourth Floor
Plot 236



Fifth Floor
Plot 239



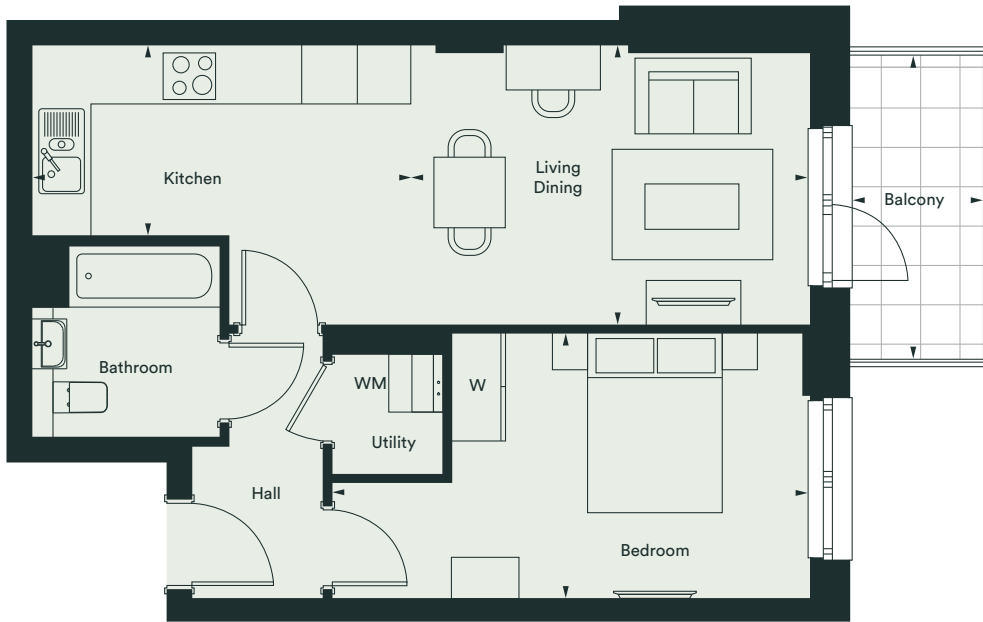
Room	Metric	Imperial
Living	3.28m x 3.89m	10'9" x 12'9"
Kitchen / Dining	3.63m x 2.20m	11'11" x 7'3"
Bedroom	4.66m x 3.39m	15'3" x 11'1"
Bathroom	2.15m x 2.10m	7'0" x 6'10"
Balcony	1.51m x 3.42m	4'11" x 11'2"

Important notice: this brochure and the description and measurements herein do not form part of any contract and whilst every effort has been made to ensure accuracy, this cannot be guaranteed. Prospective purchasers should not rely on this information but must get their solicitor to check the plans and specification attached to their contract. These particulars are believed to be correct at time of publishing but this cannot be guaranteed. Appliance locations may vary in certain apartments. Plans not to scale.

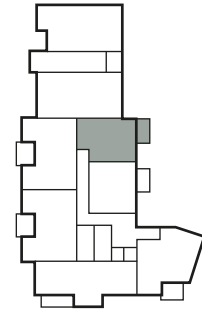
One bedroom apartment - 50.3 m²



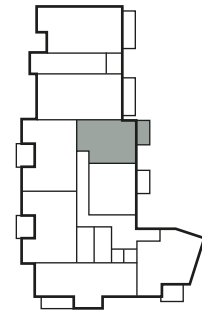
Plot 216 Flat 7
 Plot 222 Flat 13
 Plot 228 Flat 19



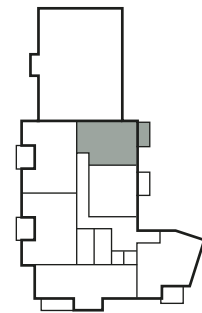
First Floor
Plot 216



Second Floor
Plot 222



Third Floor
Plot 228



Room	Metric	Imperial
Living / Dining	4.43m x 3.12m	14'6" x 10'2"
Kitchen	4.25m x 2.12m	13'11" x 6'11"
Bedroom	4.00m x 3.95m	13'1" x 9'8"
Bathroom	2.15m x 2.10m	7'0" x 6'10"
Balcony	1.51m x 3.42m	4'11" x 11'2"

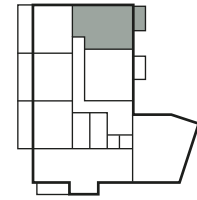
Important notice: this brochure and the description and measurements herein do not form part of any contract and whilst every effort has been made to ensure accuracy, this cannot be guaranteed. Prospective purchasers should not rely on this information but must get their solicitor to check the plans and specification attached to their contract. These particulars are believed to be correct at time of publishing but this cannot be guaranteed. Appliance locations may vary in certain apartments. Plans not to scale.

One bedroom apartment - 50.3 m²

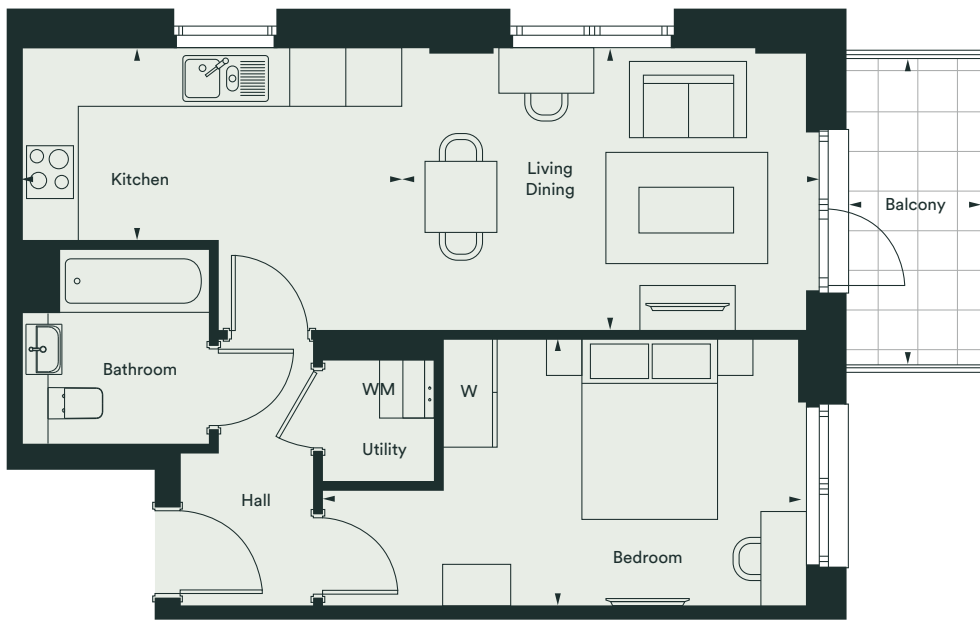
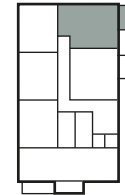
Plot 235 Flat 26
 Plot 238 Flat 29



Fourth Floor
Plot 235



Fifth Floor
Plot 238



Room	Metric	Imperial
Living / Dining	4.43m x 3.12m	14'6" x 10'2"
Kitchen	4.25m x 2.12m	13'11" x 6'11"
Bedroom	4.00m x 3.95m	13'1" x 9'8"
Bathroom	2.15m x 2.10m	7'0" x 6'10"
Balcony	1.51m x 3.42m	4'11" x 11'2"

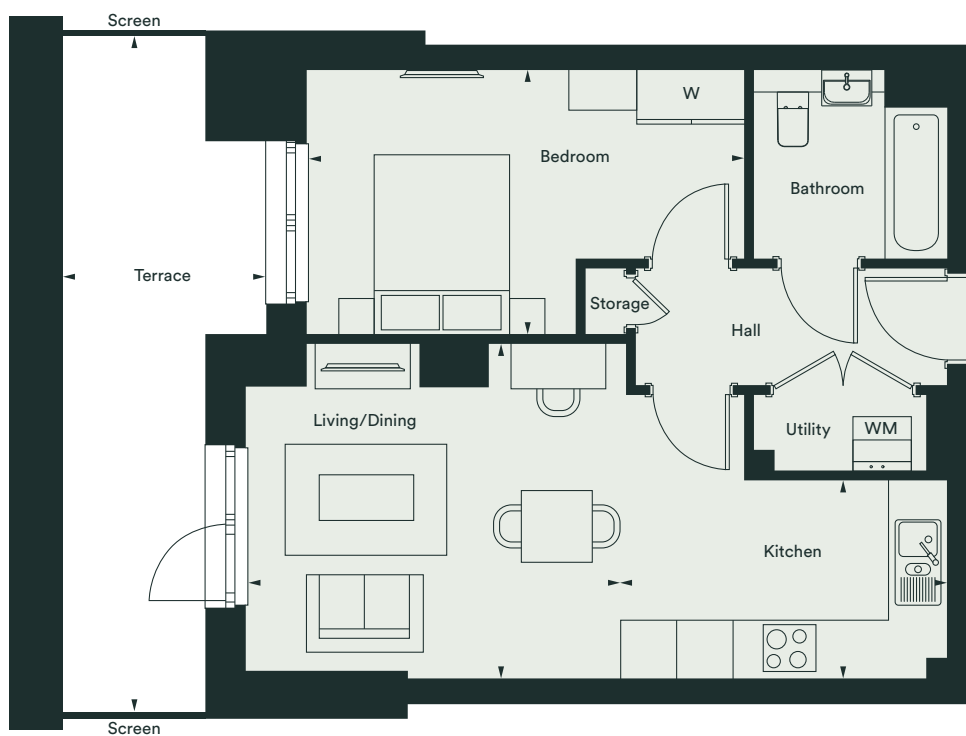
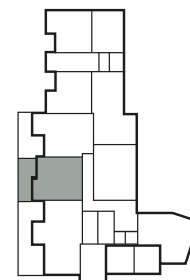
Important notice: this brochure and the description and measurements herein do not form part of any contract and whilst every effort has been made to ensure accuracy, this cannot be guaranteed. Prospective purchasers should not rely on this information but must get their solicitor to check the plans and specification attached to their contract. These particulars are believed to be correct at time of publishing but this cannot be guaranteed. Appliance locations may vary in certain apartments. Plans not to scale.

One bedroom apartment - 50.2 m²

Plot 211 Flat 2



Ground Floor
Plot 211



Room	Metric	Imperial
Living / Dining	4.17m x 3.72m	13'8" x 12'2"
Kitchen	3.63m x 2.21m	11'11" x 7'3"
Bedroom	4.87m x 2.94m	15'11" x 9'7"
Bathroom	2.15m x 2.10m	7'0" x 6'10"
Terrace	2.27m x 7.64m	7'5" x 25'0"

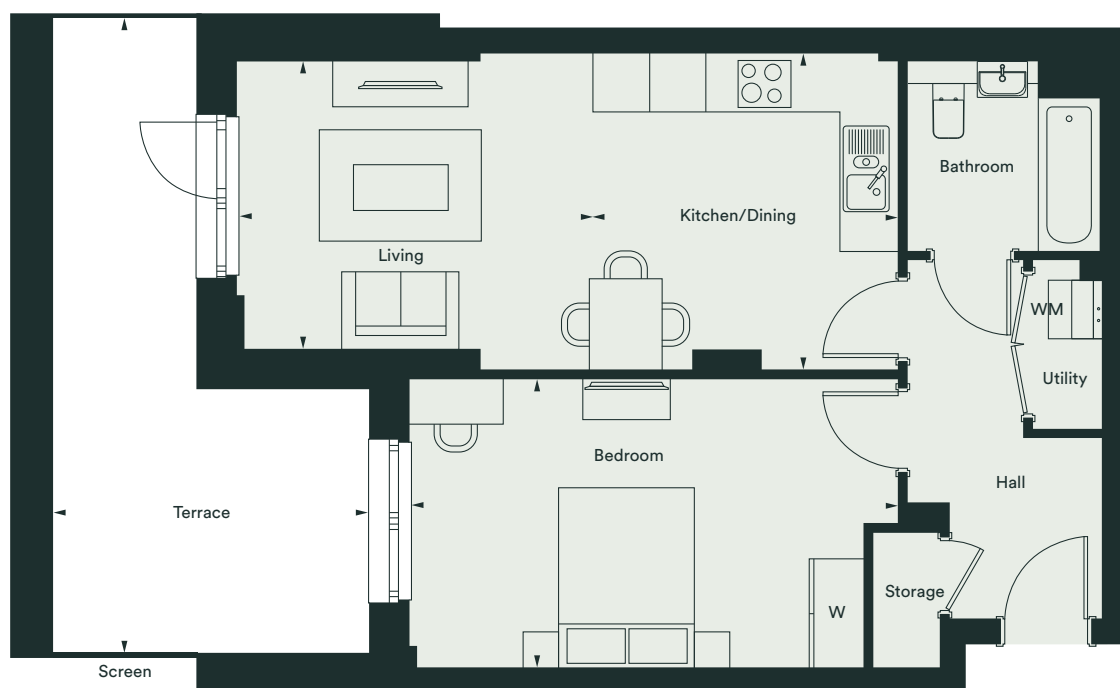
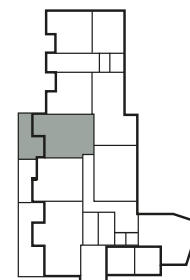
Important notice: this brochure and the description and measurements herein do not form part of any contract and whilst every effort has been made to ensure accuracy, this cannot be guaranteed. Prospective purchasers should not rely on this information but must get their solicitor to check the plans and specification attached to their contract. These particulars are believed to be correct at time of publishing but this cannot be guaranteed. Appliance locations may vary in certain apartments. Plans not to scale.

One bedroom apartment - 57 m²

Plot 212 Flat 3



Ground Floor
Plot 212

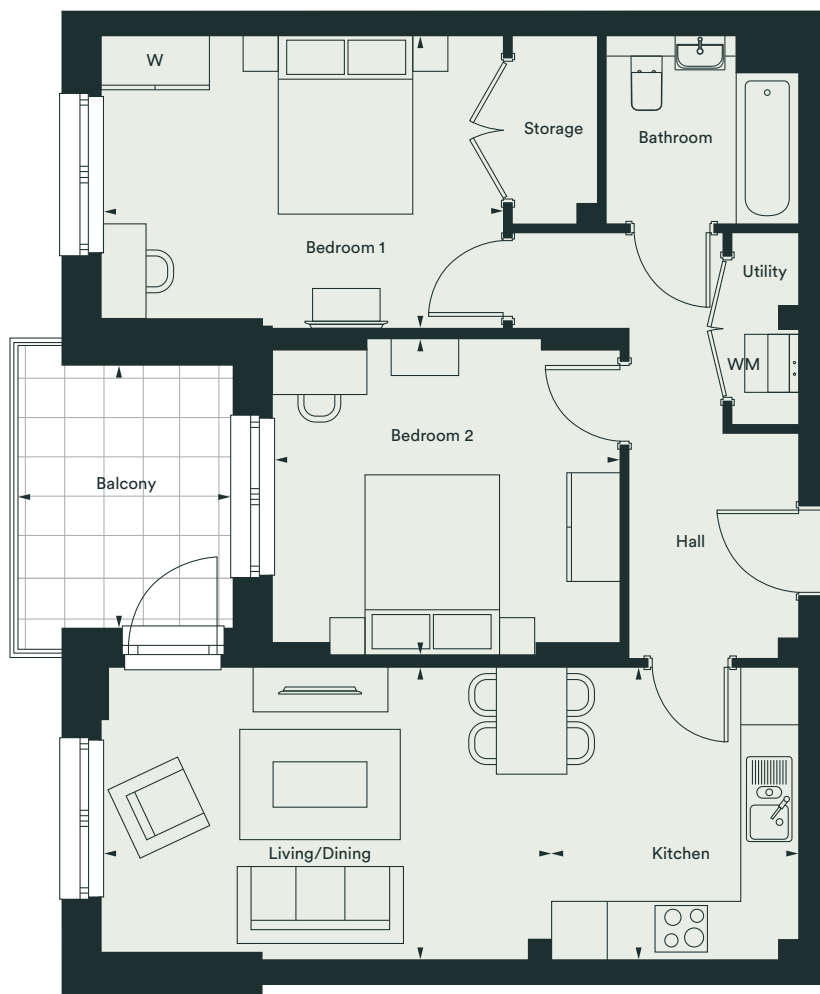


Room	Metric	Imperial
Living	3.95m x 3.18m	12'11" x 10'5"
Kitchen / Dining	3.37m x 3.50m	11'0" x 11'6"
Bedroom	5.03m x 3.20m	16'6" x 10'6"
Bathroom	2.15m x 2.10m	7'0" x 6'10"
Terrace	7.08m x 3.50m	23'3" x 11'6"

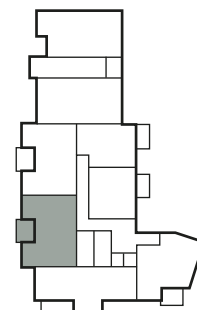
Important notice: this brochure and the description and measurements herein do not form part of any contract and whilst every effort has been made to ensure accuracy, this cannot be guaranteed. Prospective purchasers should not rely on this information but must get their solicitor to check the plans and specification attached to their contract. These particulars are believed to be correct at time of publishing but this cannot be guaranteed. Appliance locations may vary in certain apartments. Plans not to scale.

Two bedroom apartment - 73 m²

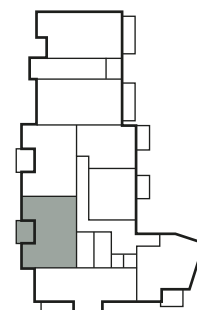
Plot 214 Flat 5
 Plot 220 Flat 11
 Plot 226 Flat 17



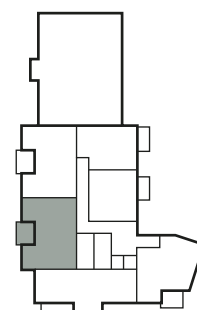
First Floor
Plot 214



Second Floor
Plot 220



Third Floor
Plot 226



Room	Metric	Imperial
Living / Dining	5.03m x 3.27m	16'6" x 10'9"
Kitchen	2.76m x 3.27m	9'0" x 10'9"
Bedroom 1	4.50m x 3.28m	14'9" x 10'9"
Bedroom 2	3.88m x 3.58m	12'9" x 11'9"
Bathroom	2.15m x 2.10m	7'0" x 6'10"
Balcony	2.41m x 2.93m	7'11" x 9'7"

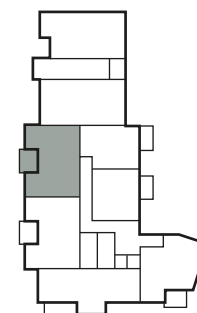
Important notice: this brochure and the description and measurements herein do not form part of any contract and whilst every effort has been made to ensure accuracy, this cannot be guaranteed. Prospective purchasers should not rely on this information but must get their solicitor to check the plans and specification attached to their contract. These particulars are believed to be correct at time of publishing but this cannot be guaranteed. Appliance locations may vary in certain apartments. Plans not to scale.

Two bedroom apartment - 72.8 m²

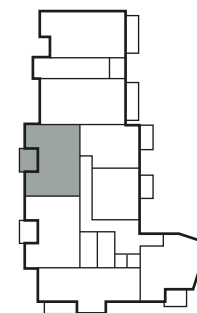
Plot 215 Flat 6
 Plot 221 Flat 12
 Plot 227 Flat 18



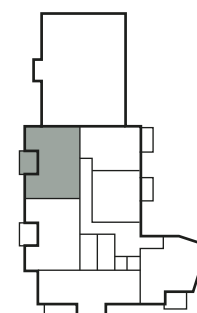
First Floor
Plot 215



Second Floor
Plot 221



Third Floor
Plot 227



Room	Metric	Imperial
Living / Dining	5.05m x 3.18m	16'6" x 10'5"
Kitchen	2.75m x 3.27m	9'0" x 10'9"
Bedroom 1	4.50m x 3.24m	14'9" x 10'7"
Bedroom 2	3.88m x 3.60m	12'9" x 11'10"
Bathroom	2.15m x 2.10m	7'0" x 6'10"
Balcony	2.42m x 2.93m	7'11" x 9'7"

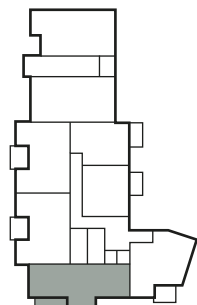
Important notice: this brochure and the description and measurements herein do not form part of any contract and whilst every effort has been made to ensure accuracy, this cannot be guaranteed. Prospective purchasers should not rely on this information but must get their solicitor to check the plans and specification attached to their contract. These particulars are believed to be correct at time of publishing but this cannot be guaranteed. Appliance locations may vary in certain apartments. Plans not to scale.

Two bedroom apartment - 74.2 m²

Plot 213 Flat 4
 Plot 219 Flat 10
 Plot 225 Flat 16



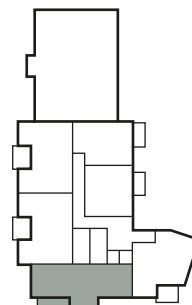
First Floor
Plot 213



Second Floor
Plot 219



Third Floor
Plot 225



Room	Metric	Imperial
Living / Dining	5.63m x 2.84m	18'6" x 9'3"
Kitchen	6.23m x 1.83m	20'5" x 6'0"
Bedroom 1	3.64m x 4.25m	11'11" x 13'11"
Bedroom 2	3.12m x 4.48m	10'3" x 14'7"
Bathroom	2.15m x 2.10m	7'0" x 6'10"
Balcony	4.53m x 1.51m	14'10" x 4'11"

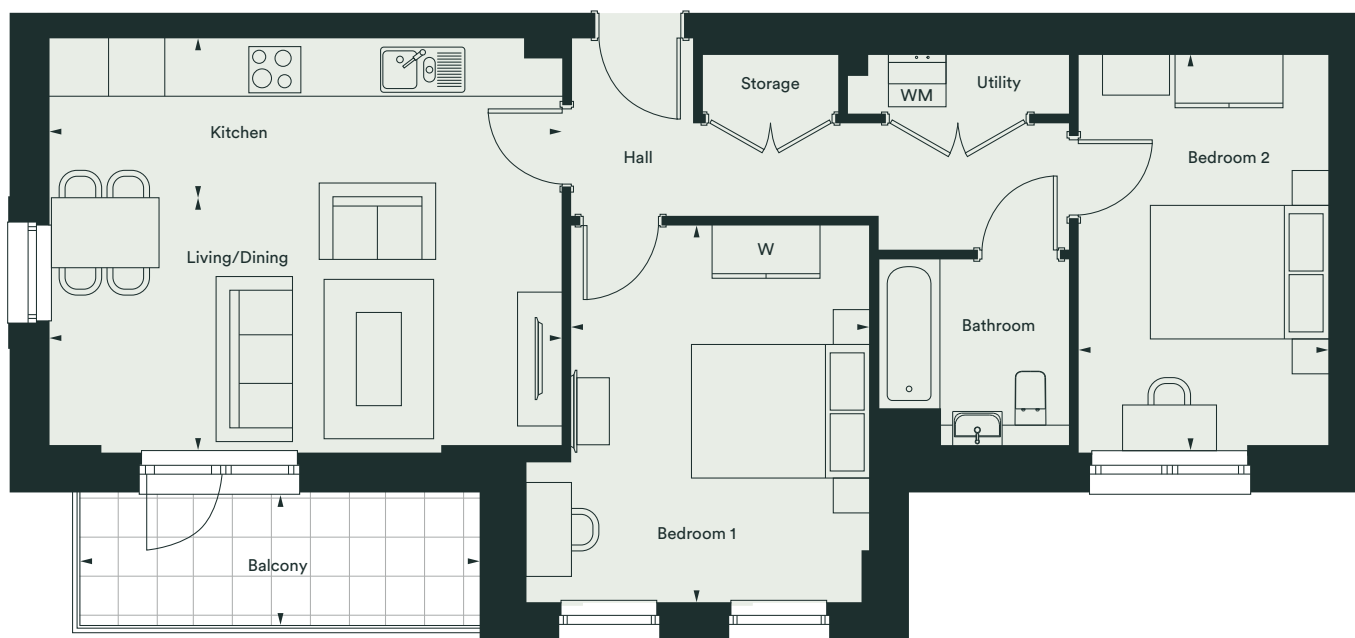
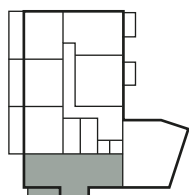
Important notice: this brochure and the description and measurements herein do not form part of any contract and whilst every effort has been made to ensure accuracy, this cannot be guaranteed. Prospective purchasers should not rely on this information but must get their solicitor to check the plans and specification attached to their contract. These particulars are believed to be correct at time of publishing but this cannot be guaranteed. Appliance locations may vary in certain apartments. Plans not to scale.

Two bedroom apartment - 72.5 m²

Plot 231 Flat 22



Fourth Floor
Plot 231

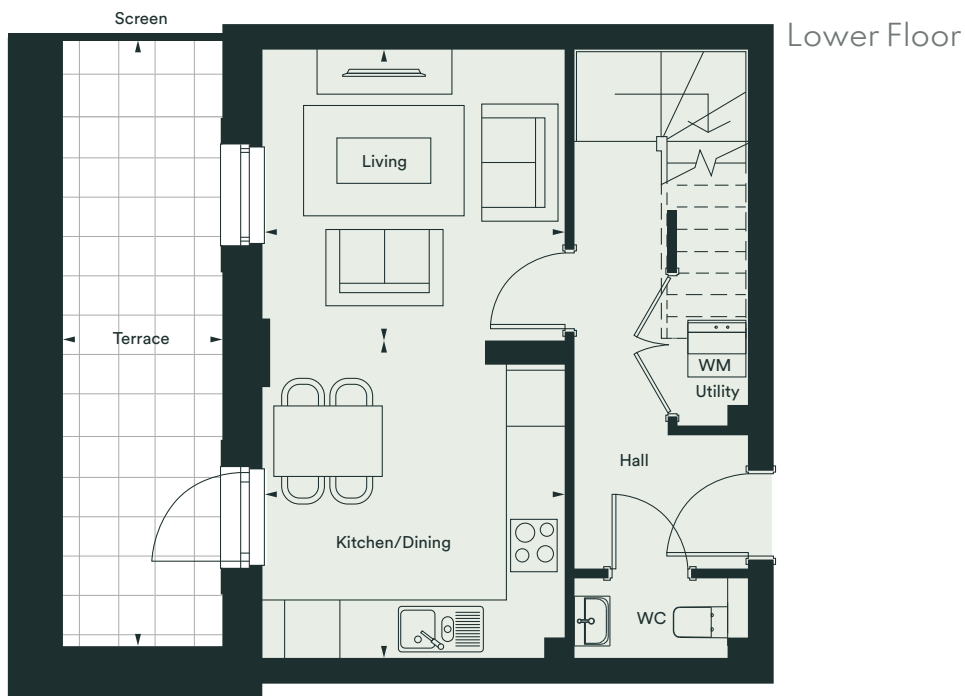


Room	Metric	Imperial
Living / Dining	5.77m x 3.03m	18'11" x 9'11"
Kitchen	5.77m x 1.63m	18'11" x 5'4"
Bedroom 1	3.36m x 4.25m	11'0" x 13'11"
Bedroom 2	2.82m x 4.39m	9'3" x 14'5"
Bathroom	2.15m x 2.10m	7'0" x 6'10"
Balcony	4.51m x 1.51m	14'9" x 4'11"

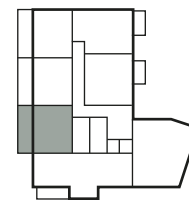
Important notice: this brochure and the description and measurements herein do not form part of any contract and whilst every effort has been made to ensure accuracy, this cannot be guaranteed. Prospective purchasers should not rely on this information but must get their solicitor to check the plans and specification attached to their contract. These particulars are believed to be correct at time of publishing but this cannot be guaranteed. Appliance locations may vary in certain apartments. Plans not to scale.

Two bedroom apartment (duplex) - 74 m²

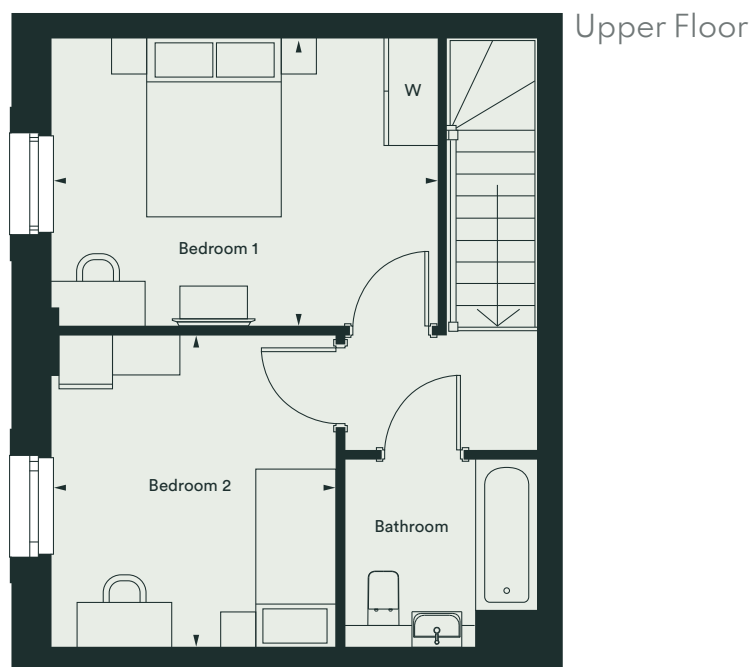
Plot 232 Flat 23



Fourth Floor
Plot 232



Fifth Floor
Plot 232

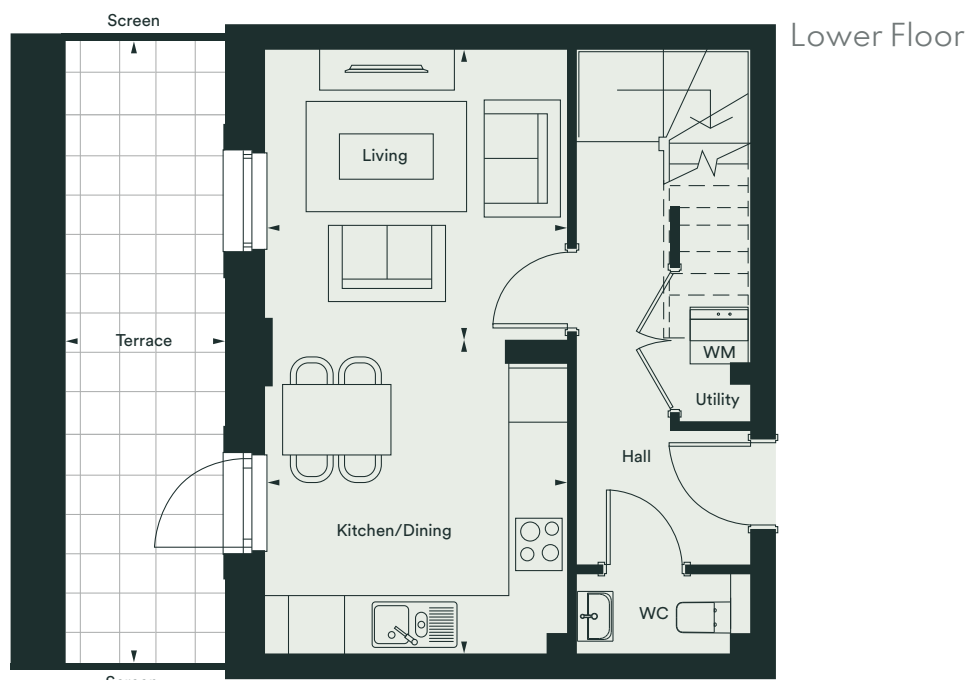


Room	Metric	Imperial
Living	3.38m x 3.25m	11'1" x 10'8"
Kitchen / Dining	3.38m x 3.54m	11'1" x 11'7"
Bedroom 1	4.32m x 3.20m	14'2" x 10'6"
Bedroom 2	3.18m x 3.48m	10'5" x 11'5"
Bathroom	2.15m x 2.10m	7'0" x 6'10"
WC	1.95m x 0.90m	6'4" x 2'11"
Terrace	1.78m x 6.77m	5'10" x 22'2"

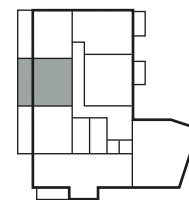
Important notice: this brochure and the description and measurements herein do not form part of any contract and whilst every effort has been made to ensure accuracy, this cannot be guaranteed. Prospective purchasers should not rely on this information but must get their solicitor to check the plans and specification attached to their contract. These particulars are believed to be correct at time of publishing but this cannot be guaranteed. Appliance locations may vary in certain apartments. Plans not to scale.

Two bedroom apartment (duplex) - 73.5 m²

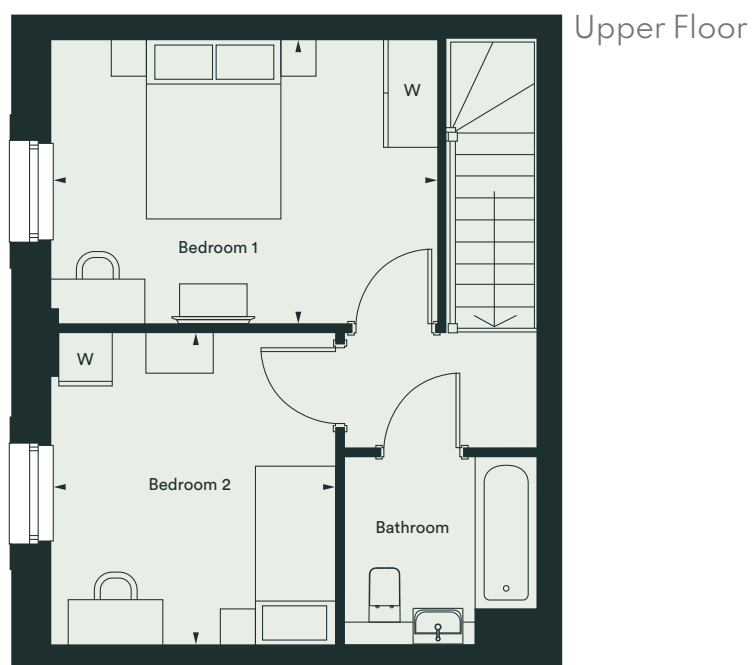
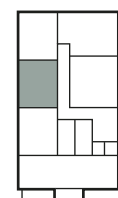
Plot 233 Flat 24



Fourth Floor
Plot 233



Fifth Floor
Plot 233

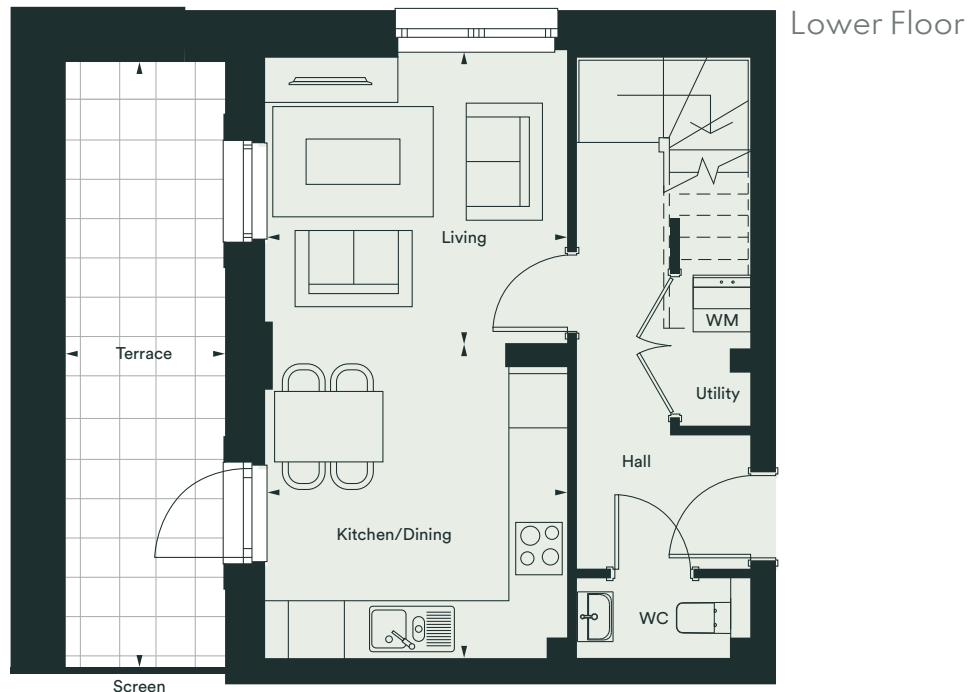


Room	Metric	Imperial
Living	3.38m x 3.25m	11'1" x 10'8"
Kitchen / Dining	3.38m x 3.51m	11'1" x 11'6"
Bedroom 1	4.32m x 3.17m	14'2" x 10'5"
Bedroom 2	3.18m x 3.48m	10'5" x 11'5"
Bathroom	2.15m x 2.10m	7'0" x 6'10"
WC	1.95m x 0.90m	6'4" x 2'11"
Terrace	1.78m x 6.97m	5'10" x 22'10"

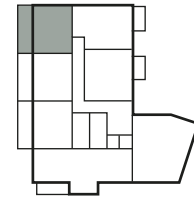
Important notice: this brochure and the description and measurements herein do not form part of any contract and whilst every effort has been made to ensure accuracy, this cannot be guaranteed. Prospective purchasers should not rely on this information but must get their solicitor to check the plans and specification attached to their contract. These particulars are believed to be correct at time of publishing but this cannot be guaranteed. Appliance locations may vary in certain apartments. Plans not to scale.

Two bedroom apartment (duplex) - 73.7 m²

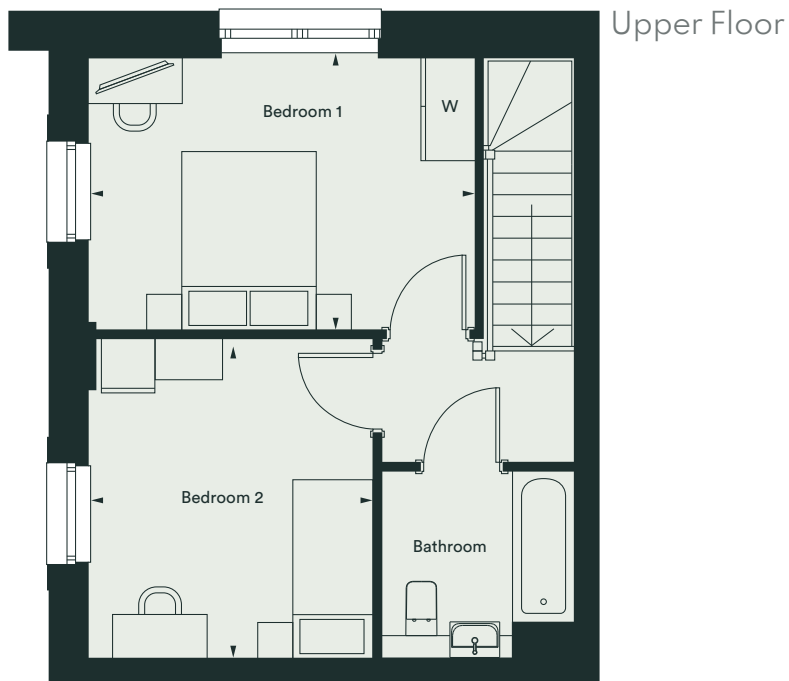
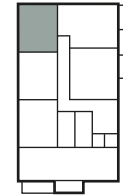
Plot 234 Flat 25



Fourth Floor
Plot 234



Fifth Floor
Plot 234



Room	Metric	Imperial
Living	3.38m x 3.28m	11'1" x 10'9"
Kitchen / Dining	3.38m x 3.52m	11'1" x 11'6"
Bedroom 1	4.32m x 3.03m	14'2" x 9'11"
Bedroom 2	3.18m x 3.58m	10'5" x 11'9"
Bathroom	2.15m x 2.10m	7'0" x 6'10"
WC	1.95m x 0.90m	6'4" x 2'11"
Terrace	1.78m x 6.77m	5'10" x 22'2"

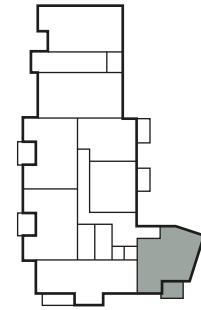
Important notice: this brochure and the description and measurements herein do not form part of any contract and whilst every effort has been made to ensure accuracy, this cannot be guaranteed. Prospective purchasers should not rely on this information but must get their solicitor to check the plans and specification attached to their contract. These particulars are believed to be correct at time of publishing but this cannot be guaranteed. Appliance locations may vary in certain apartments. Plans not to scale.

Two bedroom apartment - 63.7 m²

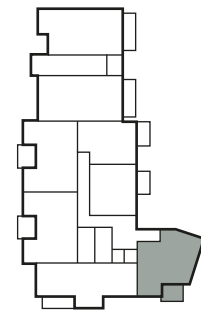
Plot 218 Flat 9
 Plot 224 Flat 15
 Plot 230 Flat 21



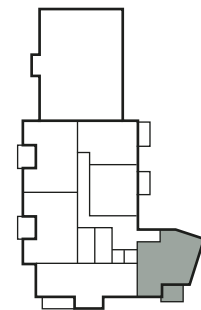
First Floor
Plots 218



Second Floor
Plots 224



Third Floor
Plots 230



Room	Metric	Imperial
Living / Dining	4.30m x 4.73m	14'1" x 15'6"
Kitchen	2.13m x 3.63m	7'0" x 11'11"
Bedroom 1	3.19m x 3.86m	10'5" x 12'8"
Bedroom 2	3.51m x 2.95m	11'6" x 9'8"
Bathroom	2.15m x 2.10m	7'0" x 6'10"
Balcony	2.93m x 2.36m	9'7" x 7'9"

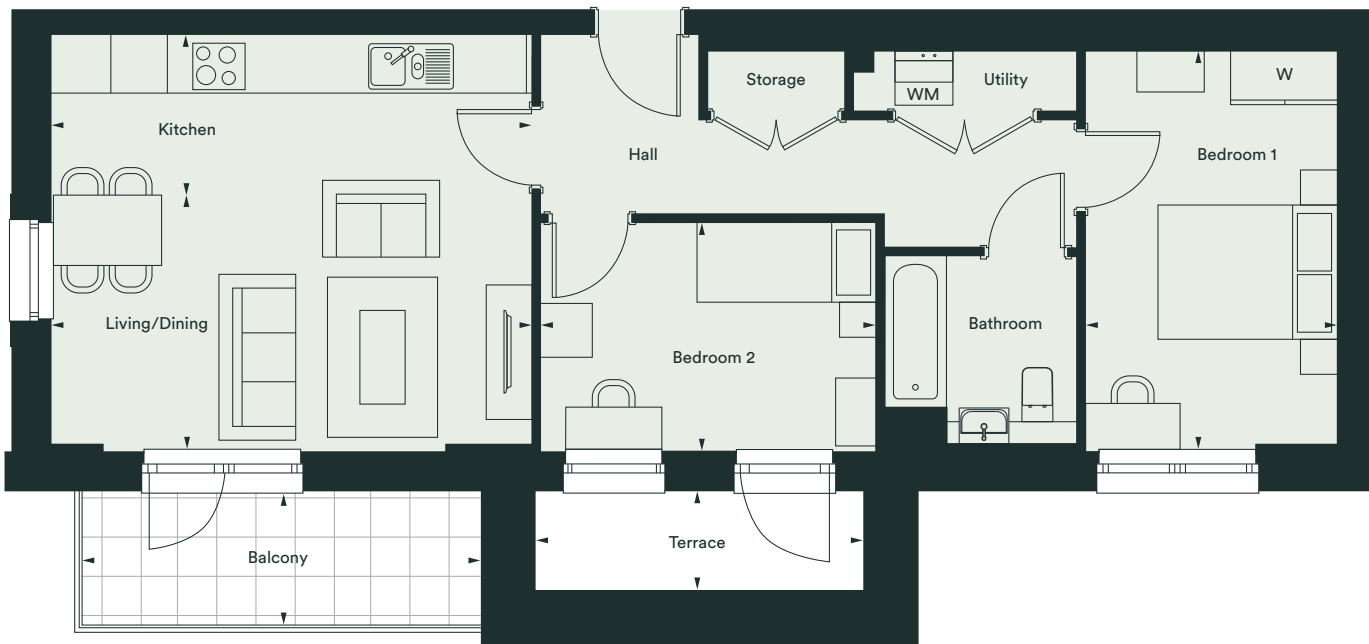
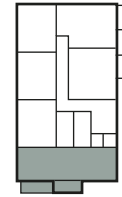
Important notice: this brochure and the description and measurements herein do not form part of any contract and whilst every effort has been made to ensure accuracy, this cannot be guaranteed. Prospective purchasers should not rely on this information but must get their solicitor to check the plans and specification attached to their contract. These particulars are believed to be correct at time of publishing but this cannot be guaranteed. Appliance locations may vary in certain apartments. Plans not to scale.

Two bedroom apartment - 65.5 m²

Plot 237 Flat 28



Fifth Floor
Plot 237



Room	Metric	Imperial
Living / Dining	5.38m x 2.12m	17'8" x 6'11"
Kitchen	5.38m x 1.75m	17'8" x 5'9"
Bedroom 1	2.82m x 4.39m	9'3" x 14'5"
Bedroom 2	3.75m x 2.57m	12'31" x 8' 5"
Bathroom	2.15m x 2.10m	7'0" x 6'10"
Balcony	4.47m x 1.51m	14'8" x 4'11"
Terrace	3.67m x 1.11m	12'0" x 3'7"

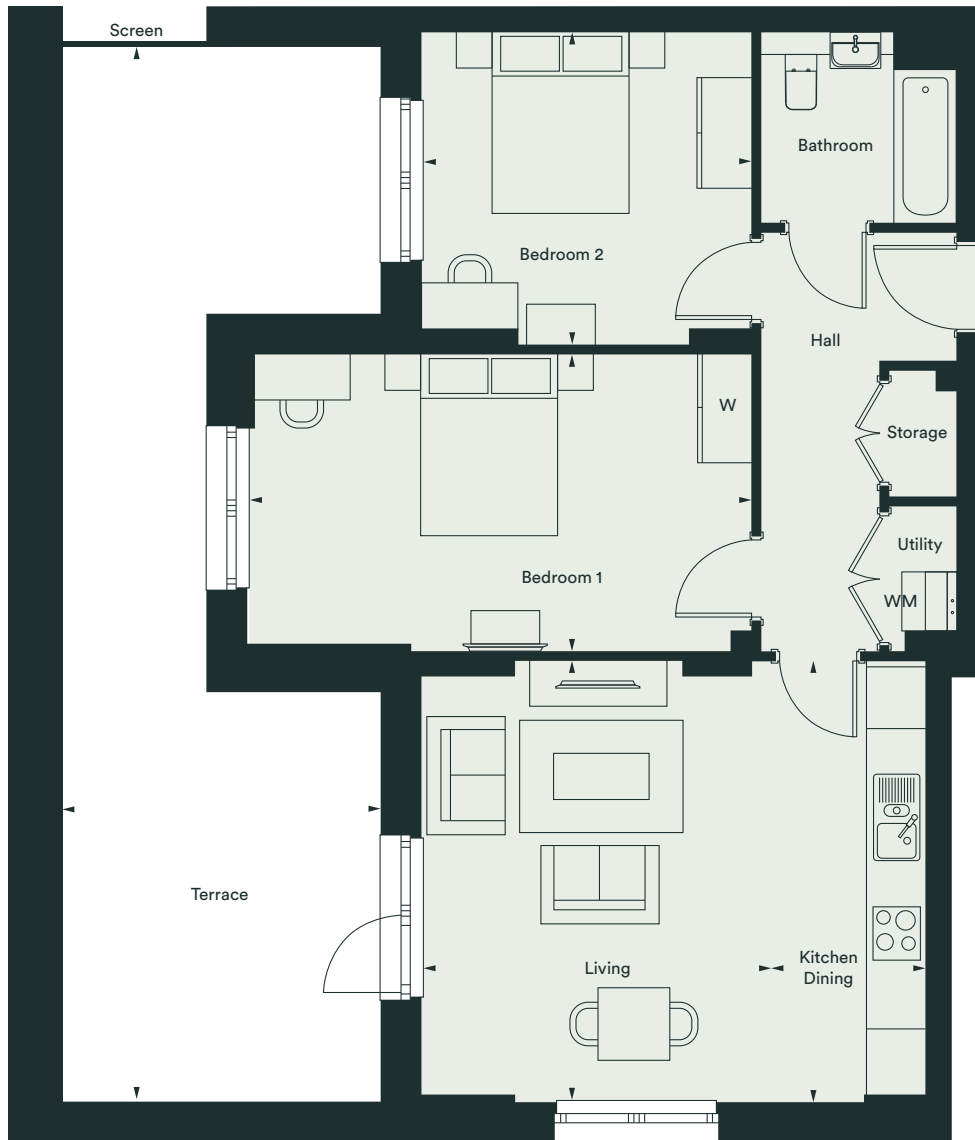
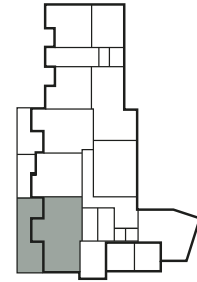
Important notice: this brochure and the description and measurements herein do not form part of any contract and whilst every effort has been made to ensure accuracy, this cannot be guaranteed. Prospective purchasers should not rely on this information but must get their solicitor to check the plans and specification attached to their contract. These particulars are believed to be correct at time of publishing but this cannot be guaranteed. Appliance locations may vary in certain apartments. Plans not to scale.

Two bedroom apartment - 73.5 m²

Plot 210 Flat 1



Ground Floor
Plot 210



Room	Metric	Imperial
Living	3.85m x 4.85m	12'7" x 15'11"
Kitchen / Dining	1.69m x 4.85m	5'6" x 15'11"
Bedroom 1	5.55m x 3.27m	18'2" x 10'9"
Bedroom 2	3.63m x 3.43m	11'11" x 11'3"
Bathroom	2.15m x 2.10m	7'0" x 6'10"
Terrace	3.50m x 12.03m	11'5" x 39'6"

Important notice: this brochure and the description and measurements herein do not form part of any contract and whilst every effort has been made to ensure accuracy, this cannot be guaranteed. Prospective purchasers should not rely on this information but must get their solicitor to check the plans and specification attached to their contract. These particulars are believed to be correct at time of publishing but this cannot be guaranteed. Appliance locations may vary in certain apartments. Plans not to scale.



CASSIA



Register your interest

Visit: [Cassia.London](https://www.cassia.london) | 0800 058 2544

IMPORTANT NOTICE: This brochure and the description and measurements herein do not form part of any contract and whilst every effort has been made to ensure accuracy, this cannot be guaranteed. Prospective purchasers should not rely on this information but must get their solicitor to check the plans and specification attached to their contract. These particulars are believed to be correct at time of publishing but this cannot be guaranteed. (March 2024).

Designed and produced by Oracle Creative | www.oraclecreative.co.uk



cassia.london