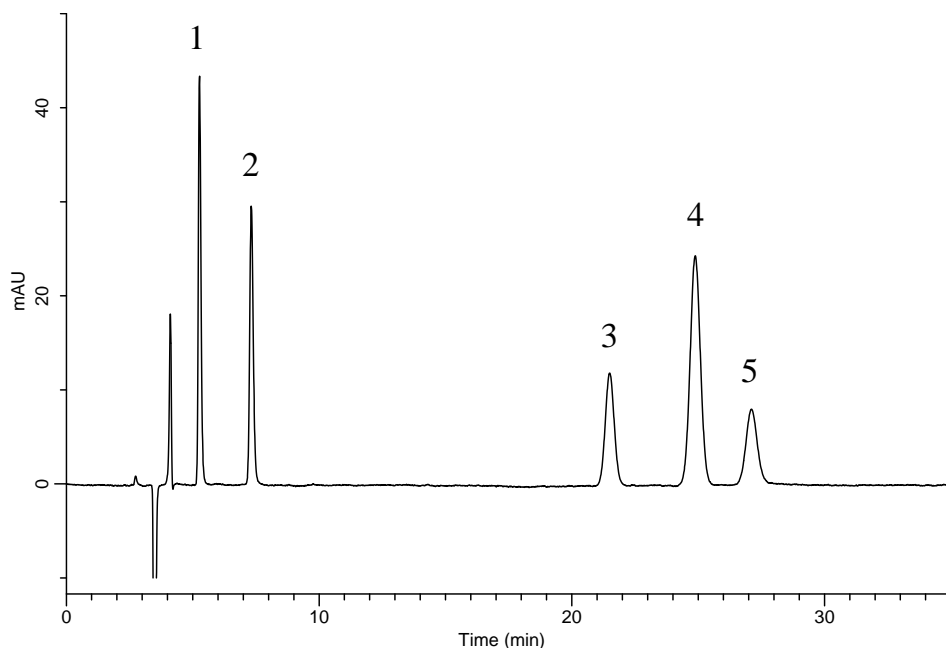


InertSearch™ for LC

Inertsil® Applications

Analysis of Preservatives and Sweetener

Data No. LB031-0894



Conditions

System : GL-7400 HPLC system
Column : InertSustain Phenyl
(5 μ m, 250 x 4.6 mm I.D.)
Column Cat. No. : 5020-16328
Eluent : A) CH₃CN
B) 0.2 % HCOOH in H₂O
A/B = 15/85, v/v (Premix)
Flow Rate : 1.0 mL/min
Col. Temp. : 25 °C
Detection : UV 230 nm (GL-7452 PDA Detector)
Injection Vol. : 10 μ L

Analyte:

1. Acesulfame potassium	10 mg/L
2. Saccharin	10 mg/L
3. Sorbic acid	10 mg/L
4. Benzoic acid	10 mg/L
5. Dehydroacetic acid	10 mg/L