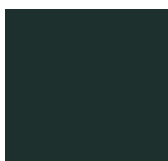




COLD CASTABLES

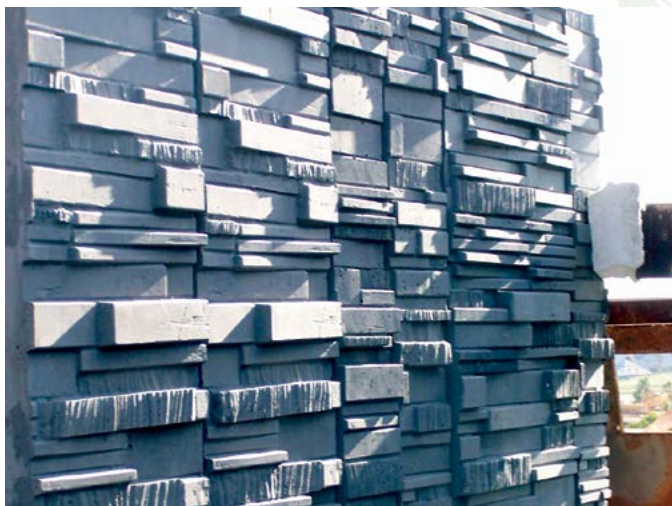
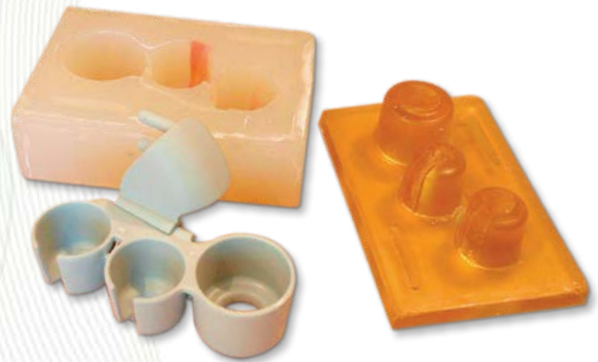


Erapol Cold Castables

Era Polymers range of Cold Castable Polyurethane systems are available in either TDI or MDI with varying hardnesses.

The variety of characteristics suit many applications including casting complex shapes and the reproduction of intricate patterns. They are designed for processing and curing at room temperature but can also be cured at elevated temperatures for faster demould and improved physical properties.

These two component products can be either hand mixed or dispensed through a plural component machine.



Applications Include:

- CONCRETE MOULDS & STAMPS
- SEALS
- SHOCK AND SOUND DAMPENING PADS
- WASHERS
- GASKETS
- GENERAL MOULDS
- ELECTRICAL INSULATION & ENCAPSULATION
- SPECIAL EFFECTS



Eracast RT

■ SLOW CURE

■ HIGH ELONGATION

■ FLEXIBILITY

TDI

PROPERTIES	RT45A	RT50A	RT60A	RT70A	RT80A	RT90A
Mix Ratio (A/B)	100/100	100/48	100/78	100/65	100/35	100/20
Working Life @ 25°C (mins)	12	14	18	15	13	12
Hardness (Shore A)	45 ± 5	50 ± 3	60 ± 4	70 ± 4	80 ± 4	90 ± 4
Mixed Viscosity @ 25°C (cps)	4000	4000	3000	3000	2700	3000

Erapol CC (High Performance - Indoor Use)

■ SLOW CURE

■ TOUGH

■ HIGH ELONGATION

■ LOW SHRINKAGE

■ GOOD ABRASION

■ FLEXIBILITY

TDI

PROPERTIES	CC50A	CC5/65A	CC80A	CC90A	CC95A	CC60D
Mix Ratio (A/B)	100/100	100/100	100/45	100/50	100/15	100/16
Working Life @ 25°C (mins)	10	12	17	15	8	6
Hardness (Shore A)	50 ± 5	60 ± 5	80 ± 3	90 ± 5	95 ± 3	60D ± 3
Mixed Viscosity @ 25°C (cps)	3300	3500	5200	4500	5000	4500

Erapol CCM (Medium Performance - Indoor Use)

■ SLOW CURE

■ HIGH ELONGATION

■ INEXPENSIVE

■ LOW SHRINKAGE

■ DURABLE

TDI

PROPERTIES	CCM75A	CCM80A	CCM90A	CCM95A
Mix Ratio (A/B)	100/45	100/35	100/20	100/15
Working Life @ 25°C (mins)	15	15	9	8
Hardness (Shore A)	75 ± 3	80 ± 3	90 ± 5	95 ± 5
Mixed Viscosity @ 25°C (cps)	3000	4400	4900	4800



Eracast QCM (Quick Cure)

- FLEXIBILITY
 - HIGH ELONGATION
- RAPID DEMOULD
 - ECONOMICAL
- LOW VISCOSITY

MDI

PROPERTIES	QCM40A	QCM60A	QCM60A/Slow	QCM70A	QCM90A	QCM90A/Slow
Mix Ratio (A/B)	100/185	100/100	100/100	100/90	100/65	100/65
Working Life @ 25°C (mins)	7	6	15	7	5	10
Hardness (Shore A)	40 ± 3	60 ± 5	60 ± 5	70 ± 5	90 ± 5	90 ± 5
Mixed Viscosity @ 25°C (cps)	575	630	630	590	630	630

Eracast (High Hardness)

- OUTSTANDING TOUGHNESS
- RAPID DEMOULD

MDI

PROPERTIES	Eracast 55D	Eracast 72D	Eracast 76D
Mix Ratio (A/B)	100/90	100/145	100/129
Working Life @ 25°C (mins)	14	12	6
Hardness (Shore D)	55 ± 5	70 ± 5	75 ± 5
Mixed Viscosity @ 25°C (cps)	750	650	650

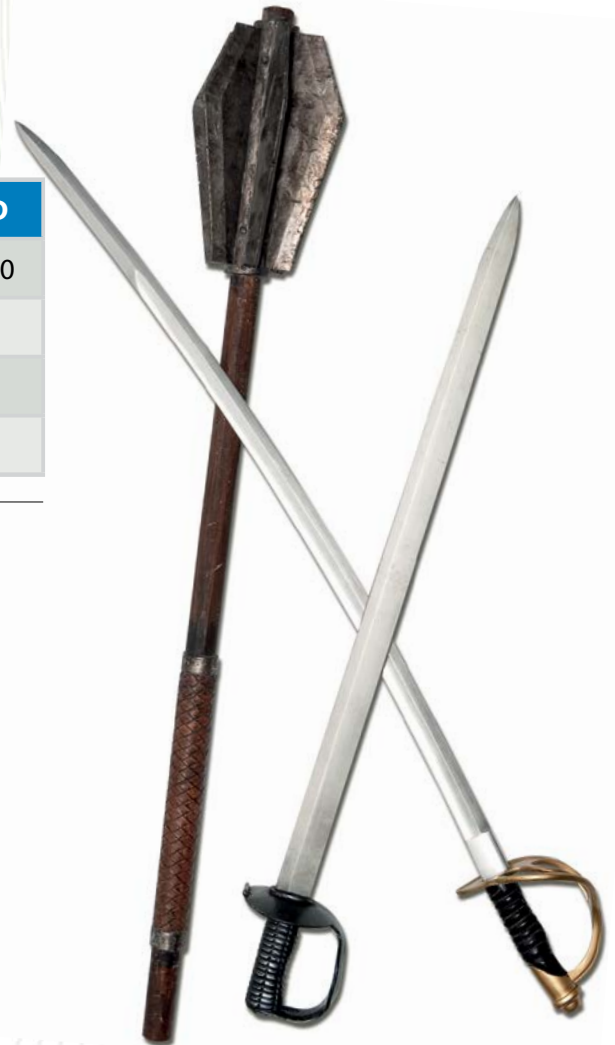
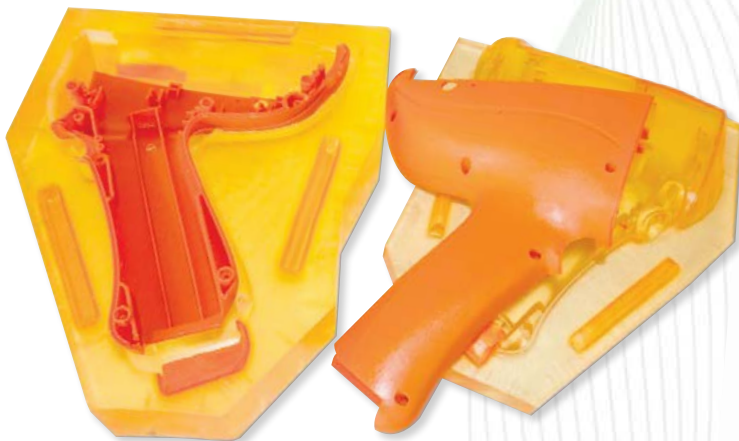


Eracast Tooling Grades

- LOW VISCOSITY
- LONG POT LIFE
- RAPID DEMOULD
- VERY LOW SHRINKAGE

MDI

PROPERTIES	TLS65D	TLS70D	TG70D
Mix Ratio (A/B)	100/100	100/100	100/130
Working Life @ 25°C (mins)	6	4	10
Hardness (Shore D)	65D	70D	70D
Mixed Viscosity @ 25°C	220	250	400



Erapol EMD (Low Hardness)

- LOW VISCOSITY
- LONG POT LIFE
- RAPID DEMOULD
- VERY LOW SHRINKAGE

MDI

PROPERTIES	EMD25A-CC	EMD35A-CC	EMD45A-CC
Mix Ratio (A/B)	100/230	100/210	100/120
Working Life @ 25°C (mins)	15	15	22
Hardness (Shore A)	25 ± 5	35 ± 5	45 ± 5
Mixed Viscosity @ 25°C (cps)	450	550	650

For further information please refer to the relevant Technical Data Sheet or contact your Era Polymers Sales Representative.

Sydney Head Office

2 - 4 Green Street
Banksmeadow
NSW 2019
Australia
P +61 2 9666 3788
F +61 2 9666 4805

Era Polymers Pty. Ltd. has a policy of continual improvement so please ensure you are in possession of the latest issue of the Product Information sheet for the products you are planning to use. Although every effort has been made to ensure the accuracy of the information contained herein, Era Polymers Pty. Ltd. gives no warranty that the information is accurate and shall under no circumstances be liable to any person if it is not. The customer must satisfy himself as to the suitability of any of Era Polymers Pty. Ltd. products for their requirements.



Era

www.erapol.com.au

Sydney • Adelaide • Auckland • Brisbane • Melbourne • Singapore • United Kingdom • South Africa • United States of America