

I N T E R I O R  
P O R T F O L I O

**HASSAN  
JABER**

حسان جابر  
DESIGN & VISUALIZATION





As a Lebanese Interior Architect raised and based in Dubai, I bring a unique multicultural perspective to my work, blending artistry with precision to create spaces that inspire, function, and endure. With over 15 years of experience, I've transformed blank canvases into breathtaking realities, crafting environments that tell stories and evoke emotions.

My work is rooted in a deep understanding of form, function, and flow, where every corner serves a purpose and every detail reflects the client's vision. From luxury villas to bespoke commercial spaces, I've mastered the art of turning ideas into tangible, awe-inspiring environments.

I thrive on innovation, constantly pushing the boundaries of design with hidden storage solutions, seamless material transitions, and functional aesthetics. As a project manager, I bring these visions to life with meticulous planning, budget mastery, and a relentless focus on craftsmanship.

Beyond architecture, I am a 3D visualization specialist, creating immersive renderings that bridge the gap between imagination and reality. My collaborations with top-tier design firms, Artists, and event production companies have allowed me to explore the intersection of architecture, art, and experiential design, making me a versatile and forward-thinking creative professional.

Services:

Interior Architecture | Project Management | 3D Visualization | Consultant

# About



## Hassan jaber

Senior Interior Architect & 3D Artist | Project Manager

Hassan@Hassanjaber.com | Dubai, UAE | +971 55 8228722

### ACADEMIC BACKGROUND:

- 2008 - 2009 Empire State College, New York  
Bachelor of Science in Interior Architecture, GPA: 3.24
- 2005 - 2008 American University of Science and Technology (AUST),

### WORK EXPERIENCE:

#### Founder & Lead Interior Architect

316 Vision | Dubai, UAE | 2018 – Present

Managed high-end residential and commercial projects up to 3.5M AED.

Delivered 100% client satisfaction across 20+ projects.

#### Senior Designer, 3D Artist & Animator

Pegasus Agriculture | Dubai, UAE | 2013 – 2018

Designed and executed large-scale hydroponic farm projects across the UAE, USA, and Saudi Arabia.

Produced high-end 3D visualizations for global clients.

#### 3D Artist & Animator

Eye Candy Concept | Beirut, Lebanon | 2010 – 2013

Developed large-scale city scenes, terrains, and architectural visualizations.

Designed and animated high-end 3D concepts for commercial spaces.

### INTERIOR PROJECTS:

#### Residential Projects:

1. **DIFC Penthouse (2020):** Renovation & furniture selection for a 1.7M AED luxury penthouse.
2. **Downtown Apartment (2020):** Full renovation & furniture selection within a 700K AED budget.
3. **City Walk Apartment (2021):** Furniture selection & interior architecture for a 500K AED project.
4. **Villa in Al-Khawaneej (2021):** Interior design & furniture selection for a 350K AED villa.
5. **Villa in Mohammed Bin Rashid District (2022):** Full renovation, interior architecture, & furniture selection for a 3.5M AED luxury villa.
6. **Villa in Dubai Hills (2022):** Interior architecture & landscape design for a 2M AED project.
7. **Villa in Palm Jumeirah (2024):** Full renovation, interior architecture, furniture selection, and landscape design for a 2.5M AED villa.
8. **Residential Suite in Abu Dhabi (2024-2025):** Full renovation & furniture selection within a 350K AED budget.

#### Commercial Projects:

1. **Rock by GS Stand, Mall of the Emirates (2024):** Bespoke jewelry display designed within a 150K AED budget.
2. **Latifa Saeed's Studio:** Warehouse-to-showroom conversion for a 150K AED project.
3. **Jumeirah Café (2024):** Full renovation of a café within a 600K AED budget.
4. **Savva Café (2022):** Concept design study for a high-end café.
5. **Zanobia Restaurant (2018):** Full-scope design and execution of a 2.5M AED restaurant.

### 3D Visualization & Rendering (Interior Design, Artist, & Events) :

#### 1. Interior Design & Architecture – High-End 3D Visualization

Collaborated with renowned design firms to create photo-realistic 3D renders, immersive VR walkthroughs, and architectural visualizations.

- Clients include:

Emaar, Meraas, Studio M, VSHD, Styled Habitat, Cestici, Ph Design and more.

#### 2. Art & Cultural Projects – 3D Support for Emirati & Dubai-Based Artists

Provided 3D rendering expertise for Emirati artists, helping visualize and execute artistic concepts.

- Collaborations include:

Maktoum Al Maktoum, Latifa Saeed, Rawdha Al-Kitbi, Iris, and more.

#### 3. Events & Experiential Design – 3D Concept Development for Event Companies

Designed immersive event spaces, stage designs, and branded installations for leading event production firms.

- Clients include:

Events Lab, Sila, Inspire Me, Light Blue, Jack Morton , Eye Candy concepts and more.

### DESIGN CHALLENGES & CREATIVE SOLUTIONS

**Balancing functionality with aesthetics is a core challenge in my work.**

**My approach includes:**

- **Hidden Storage Solutions:** Designing concealed compartments and multi-functional elements for an uncluttered, elegant look.
- **Seamless Design Language:** Using minimal materials, clean lines, and integrated lighting for a cohesive feel.
- **Functional Efficiency:** Tailoring layouts and bespoke furniture to optimize space while maintaining fluidity.

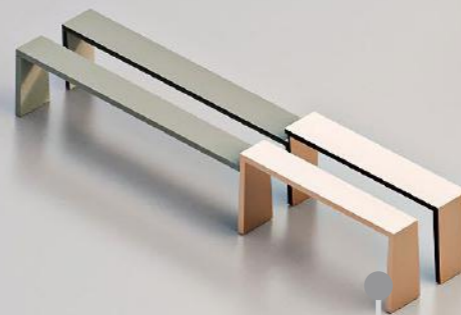
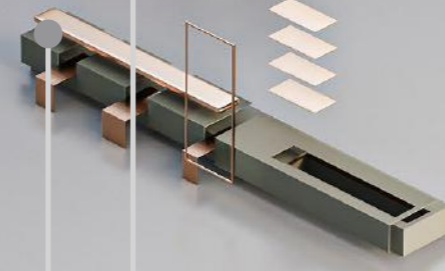
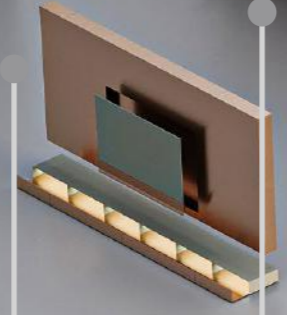
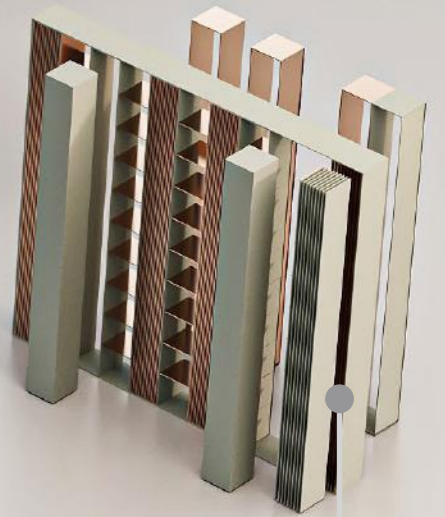
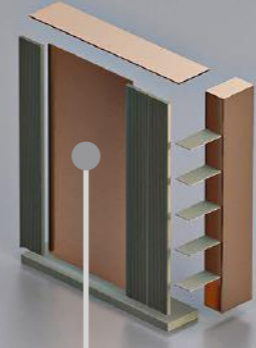
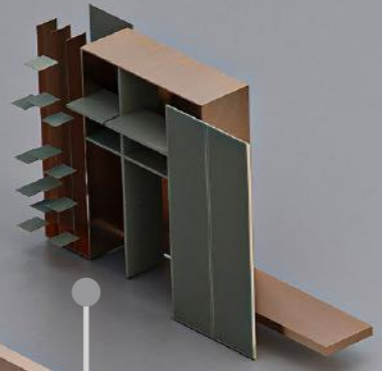
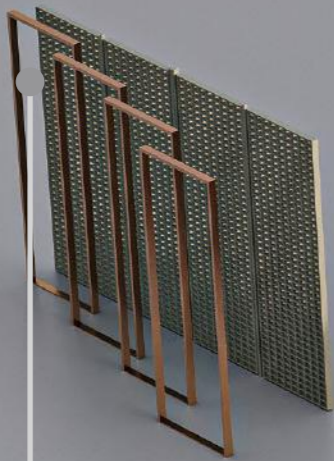
**What sets my 3D renderings apart is their exceptional realism, bringing spaces to life with unmatched accuracy. Key strengths include:**

- **Photo-Realistic Visuals:** Capturing textures, lighting, and details for true-to-life renderings.
- **Client-Centric Approach:** Making designs easy to understand and approve.
- **Immersive Walk-throughs:** Allowing clients to explore spaces interactively.

### KEY SKILLS:

- Project Management (Budgeting, Contractor Coordination, Site Supervision)
- Client Communication & Relationship Management
- 3D Rendering (3ds Max, V-Ray, Corona)
- Autocad, Adobe Suite, Office Suite
- AI Creative Technologist

# **RESIDENTIAL PROJECTS**



01. Abudhabi Suite  
2025

02. MBR Villa 820  
2025

03. Dubai Hills Villa 111  
2024

04. Al Khawneej Villa  
2023

05. Downtown Apartment  
2023

06. Citywalk Apartment  
2023

07. DIFC Apartment  
2022

08. Palm Jumirah Villa  
2021

09. Al Kendari Villa  
2020







# MBR Villa 820

YEAR	2022
LOCATION	MBR DISTRICT . DUBAI
BUDGET	3.5 MILLION
SQM	600
ROLE	DESIGN & SUPERVISION

This full renovation in the Mohammed bin Rashid district harmonizes contemporary elegance with inviting warmth. The design language balances precise geometry with fluid curves, creating a structured yet welcoming atmosphere.

Prestigious furnishings from Minotti, B&B, and Baxter complement the Giorgio Arabico and Armani marble surfaces throughout. Strategic brass accents add depth and luxury, while a bespoke Boffi Kitchen serves as the functional centerpiece.

Thoughtful architectural elements enhance the living spaces, staircase, and bedrooms. Personalized children's rooms and custom furniture pieces reinforce the villa's exclusive character.

The minimalist exterior features refined lighting that highlights architectural details, while strategic landscaping ensures privacy. Every element works in concert to achieve timeless luxury with understated sophistication.













## Furniture Selection



Minotti. Hamilton



Minotti. Saddle



Cassina. Utrecht



B&B. Mirto



Minotti. Pilotis



Minotti. Carpet



Minotti. Linha

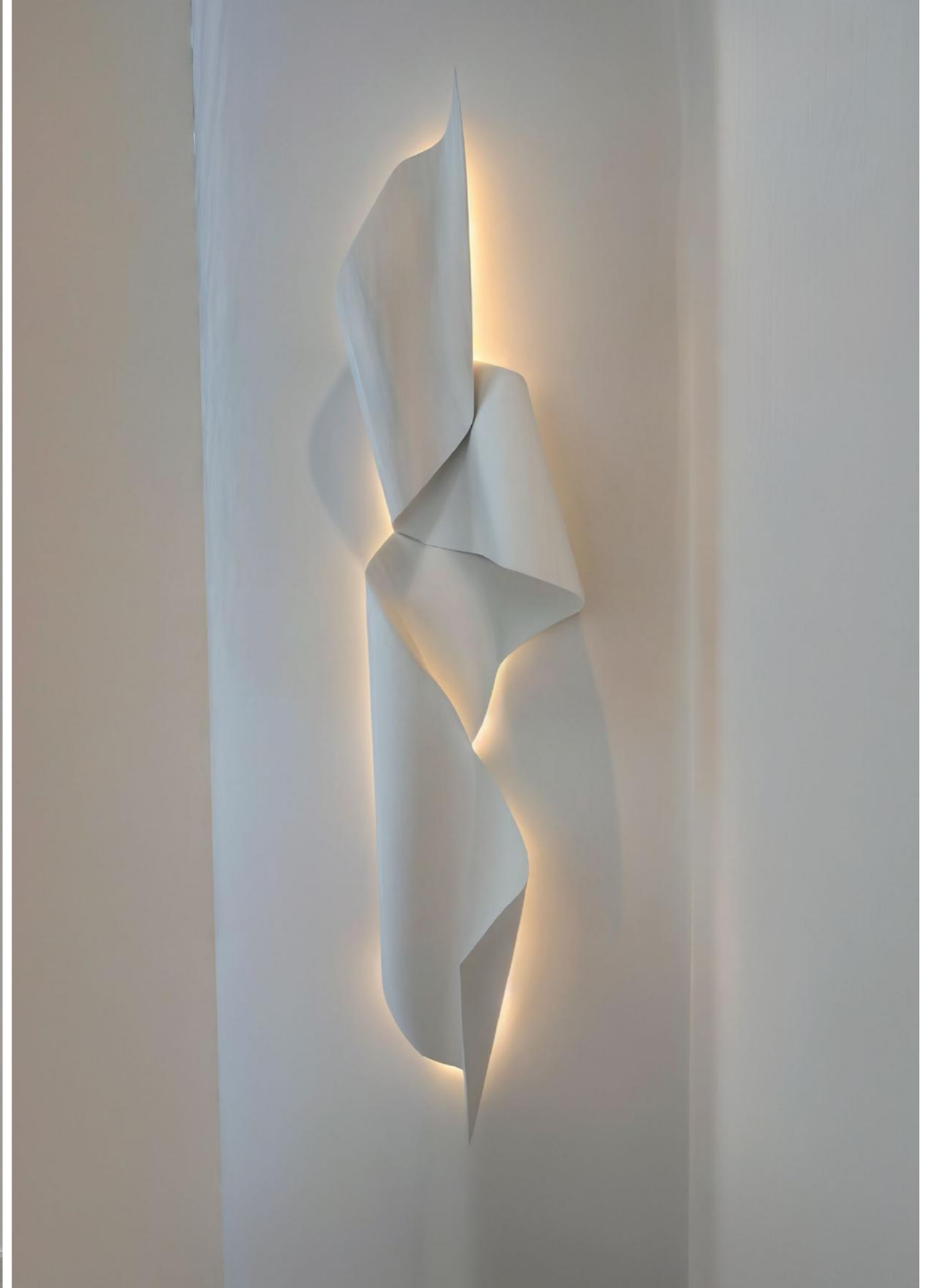


B&O. Harmony

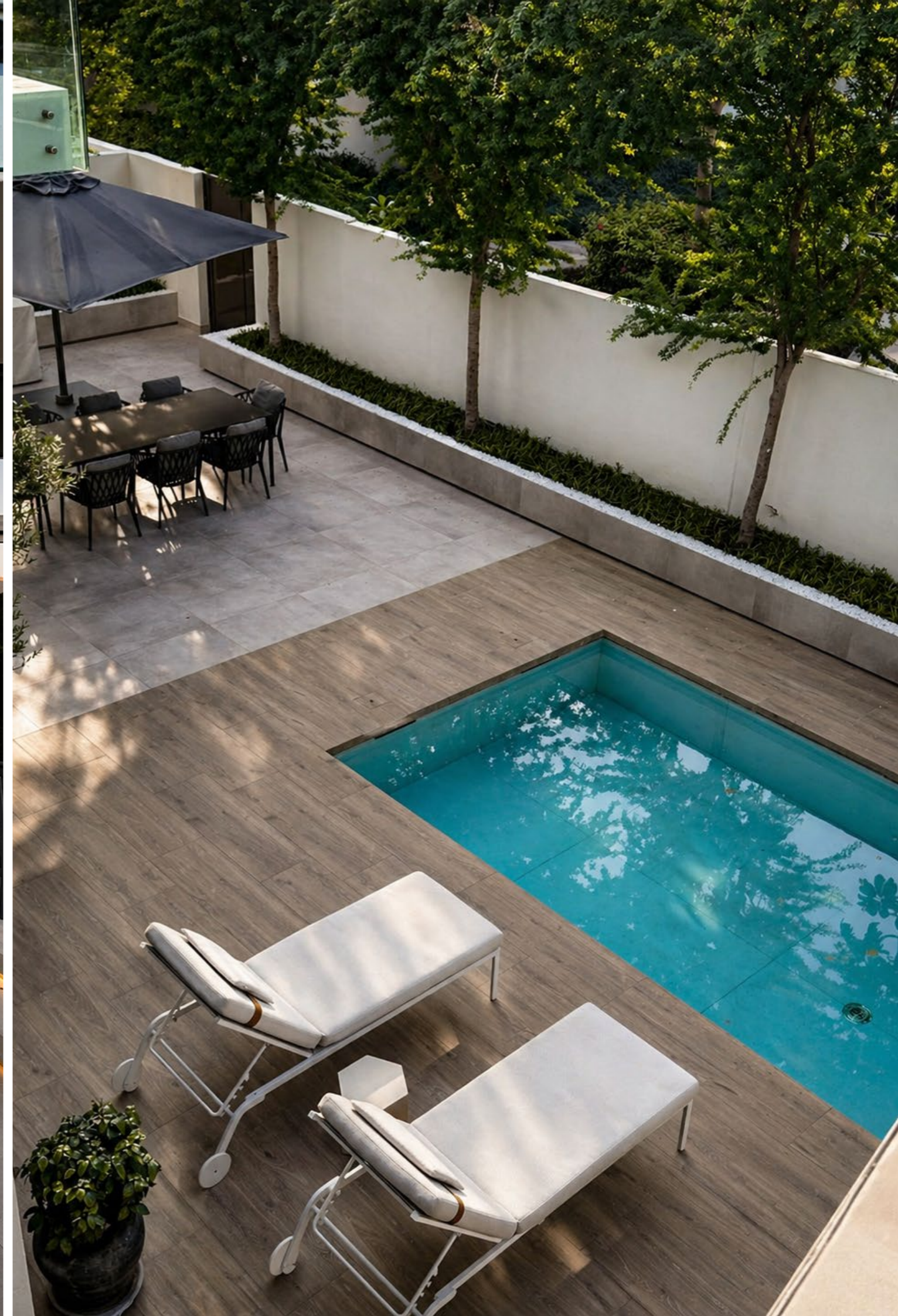










































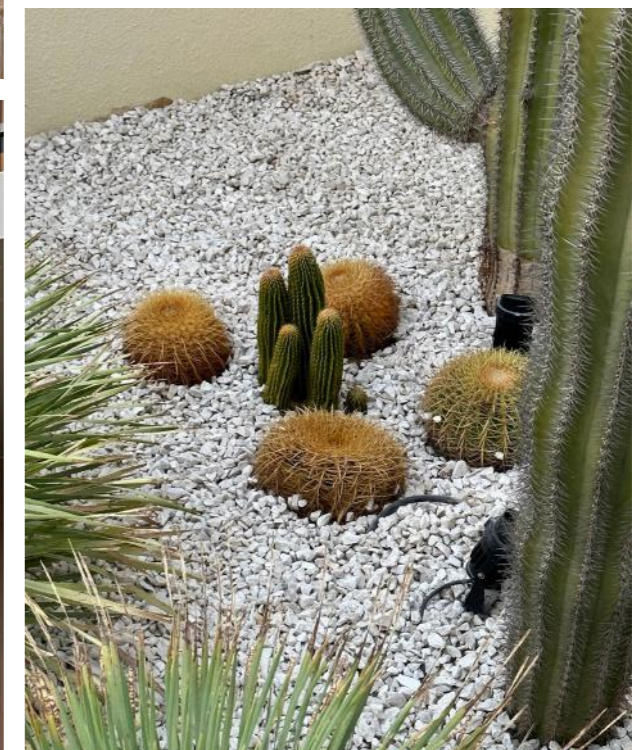
# Dubai Hills Villa 111

YEAR	2022
LOCATION	DUBAI HILLS . DUBAI
BUDGET	2 MILLION
SQM	500
ROLE	FULL SCOPE & SUPERVISION

Designed to harmonize with its surroundings, this Dubai Hills residence embraces a refined desert-inspired aesthetic. A seamless connection between architecture and nature was achieved by integrating cacti and olive trees throughout the landscape. The exterior features floating benches illuminated with soft lighting, a tranquil pool, and a central pergola, all unified by a raw concrete finish. A sunken seating area enhances the outdoor experience, offering a cozy retreat within the landscape.

Inside, the villa's spatial flow was carefully refined to enhance functionality while preserving a sense of serenity. Wooden cladding introduces warmth and texture, complementing the minimalist yet inviting design. Room layouts were optimized, particularly in the master bedroom, where additional storage was integrated without compromising elegance. In the living room, movable wooden partitions allow for a dynamic transformation of space, shifting perspectives with every adjustment.

Balancing function and tranquility, the design blends organic elements with architectural refinement to create a modern sanctuary. Every detail, from material selection to spatial organization, contributes to a timeless home that feels both grounded and sophisticated, offering a seamless blend of comfort and style.





**Design Challenge: The husband wanted a bar; the wife wanted an art display. Function vs. aesthetics a classic standoff!**  
**Our solution? A clever design that served both, blending style with practicality to keep them both happy.**



**(Doors closed): A sleek wooden partition with a built-in niche, featuring a stylish bench under the artwork serene, elegant, and bar-free (for now).**



**(Doors Opened): The partition shifts, revealing a completely new look Artwork is hidden, Looks like a full built in shelving unit.**



**(Bar Moved): Surprise! A hidden bar emerges from the partition, ready for entertaining. When the guests leave, it neatly tucks away, restoring peace (and aesthetics) in the living room.**



**Outdoor :**

- Low railing, lacked privacy
- Needed multiple functions (pool, dining, sunken area)
- Too many materials, lacked cohesion



- Used one concrete material for seamless Flooring
- Created a floating seating area with lights
- Added ficus trees for privacy
- Installed linear lights under trees for ambiance

**Entrance :**

- Multiple uneven levels
- Boring entrance, lacked visual appeal



- Created a cactus desert theme landscape
- Used one material for consistency
- Added floating steps with integrated lighting

**Hallway :**

- Cluttered elements (glass balustrade, uneven door heights)
- Visually unpleasing and inconsistent



- Unified space with warm wooden material
- Replaced glass balustrade with darker embedded glass
- Installed hidden doors and panels for a seamless look

**Master Bedroom :**

- Wall niche wasted space
- Client needed more storage
- Room was too large and underutilized



- Removed niche and installed a 45cm full-height cabinet
- Added shelves for optimized storage
- Created an extra dressing area by reconfiguring space

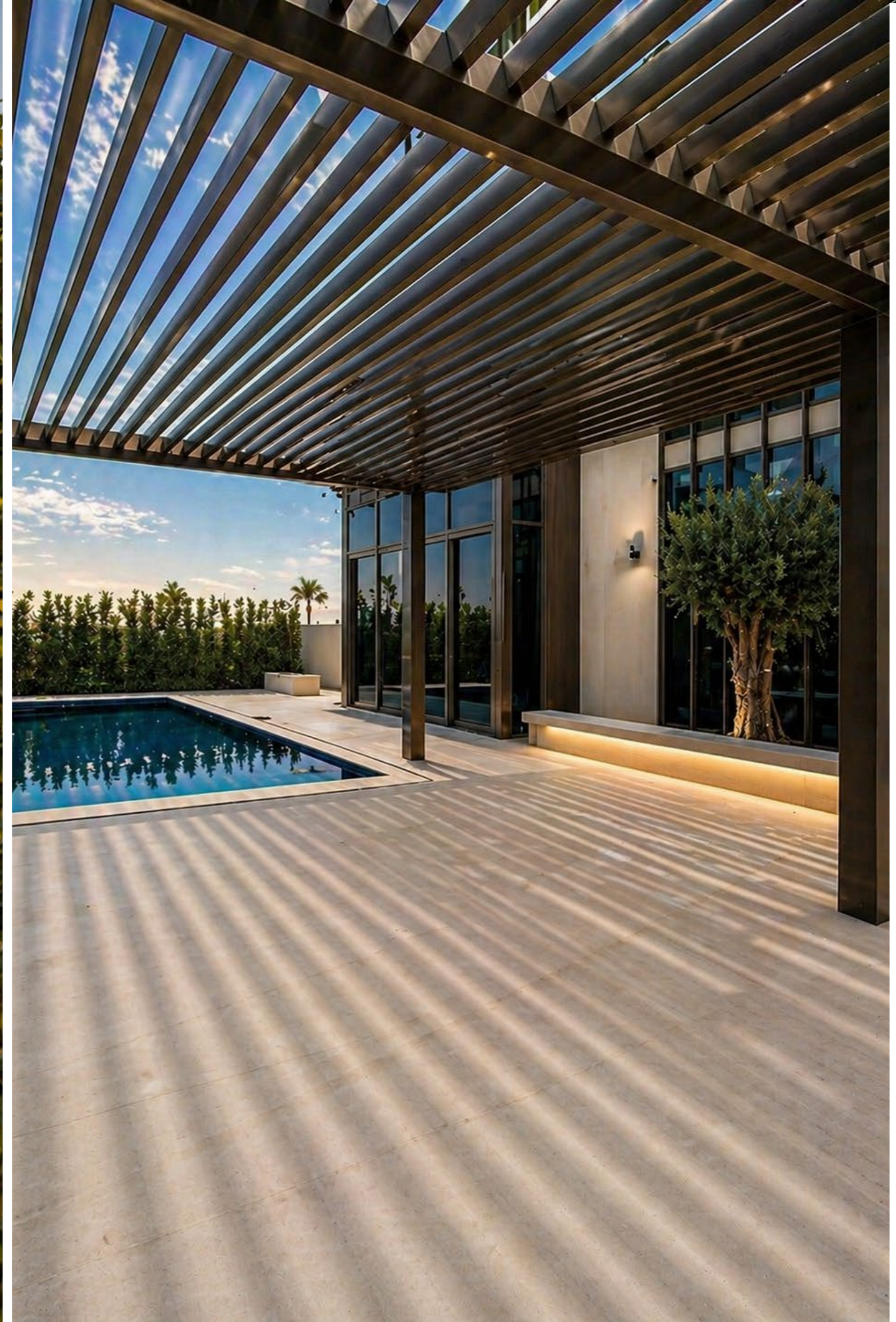






















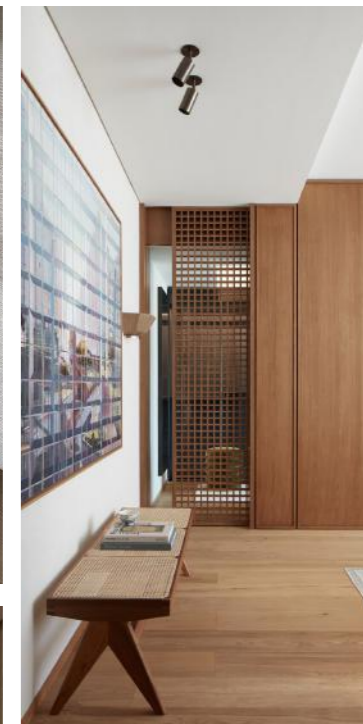
# Abudhabi Suite

YEAR	2025
LOCATION	ABUDHABI
BUDGET	350 K
SQM	175
ROLE	DESIGN & SUPERVISION

In Abu Dhabi, a family home underwent a transformation to create a dedicated suite for a newly married couple. The challenge lay in optimizing a space with a low ceiling and limited storage while maintaining a refined aesthetic. To unify the design, warm wooden cladding enveloped the walls, creating a seamless and inviting atmosphere. Hidden storage beneath the stairs provided smart solutions for luggage and everyday essentials, ensuring both functionality and elegance.

The suite was thoughtfully divided into two distinct areas. A spacious walk-in closet featured a dedicated dressing unit and an open wardrobe for effortless access, balancing practicality with sophistication. The bedroom centered around a sculptural bench that supported the bed, blending Japandi elegance with contemporary design.

Soft lighting, curated artworks, and natural textures infused the space with warmth and intimacy, elevating it into a high-end retreat. Every element was carefully curated to balance artistic refinement with everyday comfort, resulting in a serene yet functional sanctuary perfectly tailored for the couple's new chapter in life.



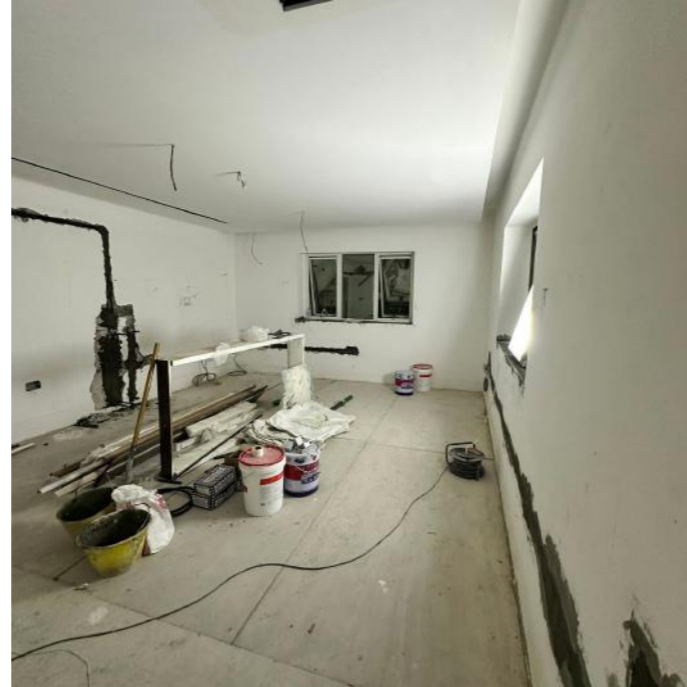


**Hallway :**

- Two large unused niches (1.2m x 2m) under the stairs.
- Needed better storage and organization.

**Living Room :**

- Needed a functional TV unit without making the space feel narrow.

**Walk in Closet :**

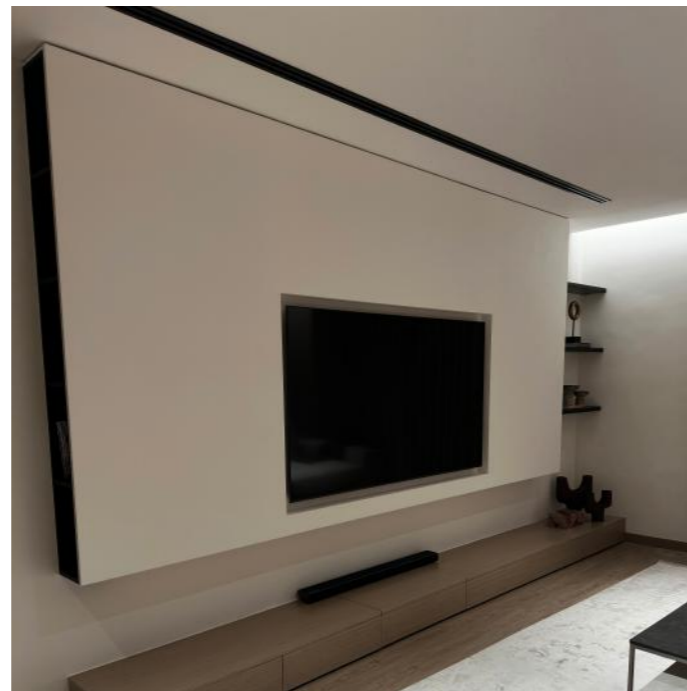
- Low ceiling and exposed bulkhead affected the room's proportions.

**Master Bedroom :**

- Old closet and exposed AC grills disrupted the clean aesthetic.
- Needed a minimal, functional design.



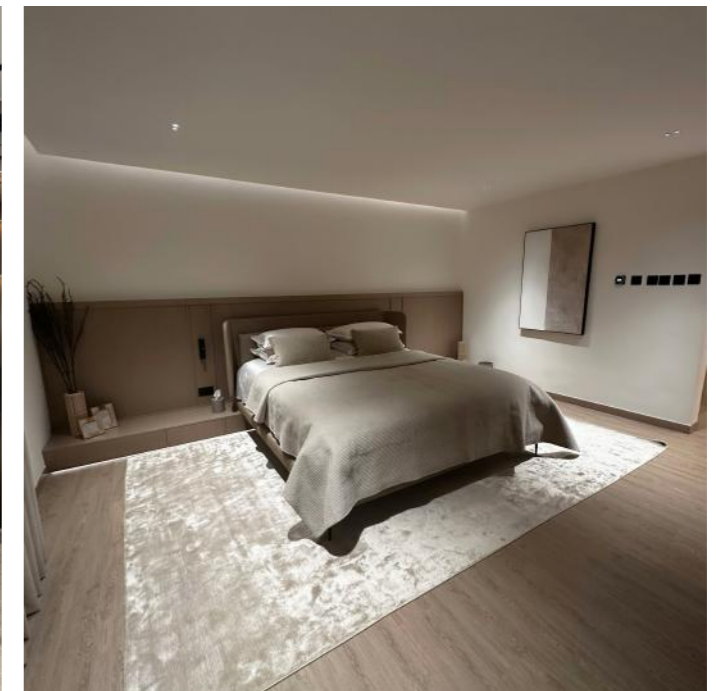
- Installed sliding, hidden racks for shoe storage.
- Added a pantry for extra kitchen storage.
- Created a small closet for packages and miscellaneous items.



- Designed a built-in TV unit to save space.
- Added side shelves for storage and display.
- Concealed all cables and accessories in a lower wooden cabinet.



- Relocated ceiling elements to the sides.
- Embedded the bulkhead within a custom leather-clad cabinet.
- Concealed the AC grills within the cabinetry for a seamless look.



- Created a Japanese-style headboard & partition.
- Embedded side drawers within the bed frame.
- Installed under-shelf lighting to enhance ambiance.
- Removed the old cabinet and replaced it with an open walk-in wardrobe.



















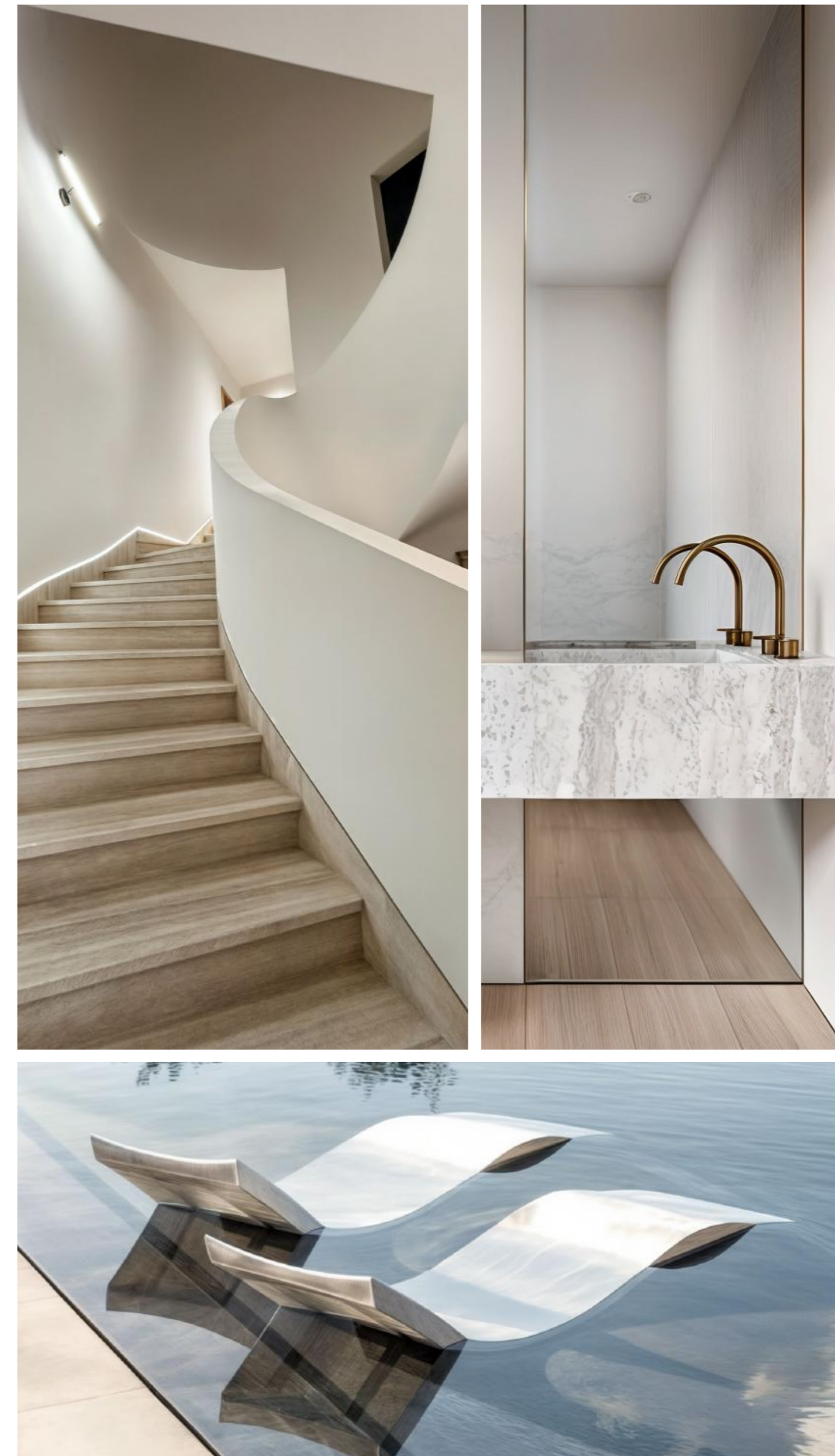
# Palm jumirah Villa

YEAR	2024
LOCATION	PALM JUMIRAH. DUBAI
BUDGET	2.5 MILLION
SQM	600
ROLE	FULL SCOPE & SUPERVISION

Perched on the shores of Palm Jumeirah, this villa underwent a profound metamorphosis, an evolution from outdated to timeless. The once-worn facade was reborn in luminous white, wrapped in elegant Travertine that stretched seamlessly from exterior to interior, creating a flow of refined luxury. Towering glass facades invited the sea's golden light, dissolving the boundary between inside and out.

Within, the transformation was equally bold. A staircase once rigid and aged became a sculptural masterpiece, an organic, flowing form, curving effortlessly as if carved from a single entity, its skirting illuminated like a soft halo. The language of design remained pure and strong, with Travertine not just on the floors but rising into the walls, blending into seamless edges, grounding the villa in warmth and sophistication.

Beyond aesthetics, function was re imagined. Concealed storage emerged in unexpected places, tailored for a family's ever-growing needs. A living room transformed at will, its paneling shifting from private retreat to an art-filled gallery. Every detail was designed with intent, every surface whispering elegance. The result? A home that breathes, adapts, and stands as a testament to the power of transformation.







**MINIMAL CEILING - LINEAR AC SLOTS**



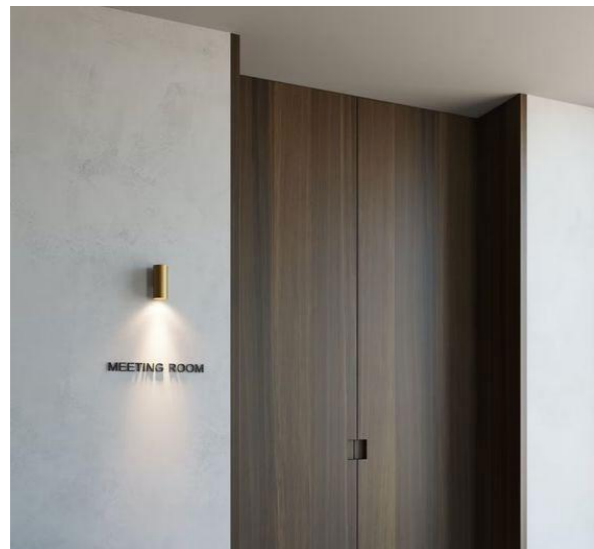
**SKIRTING WITH FLOORING**



**SHADOW GAPS**



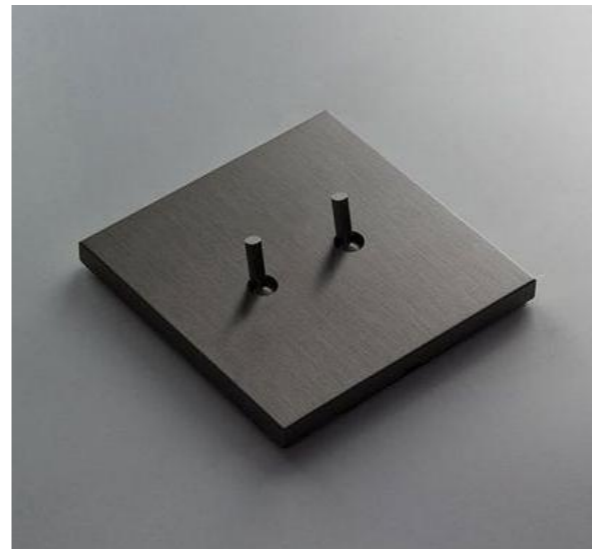
**CONCEALED HINGES**



**FULL HEIGHT DOORS**



**EMBEDDED SOCKETS**



**MINIMAL SOCKETS & PLUGS**



**SMART MINIMAL SYSTEM**



**TRIM-LESS SPOTS**



**TRIM-LESS POP SPOTS**



**BOLD HANDLES**



**BIG FLOORING TILES**









**BEFORE**





**AFTER**































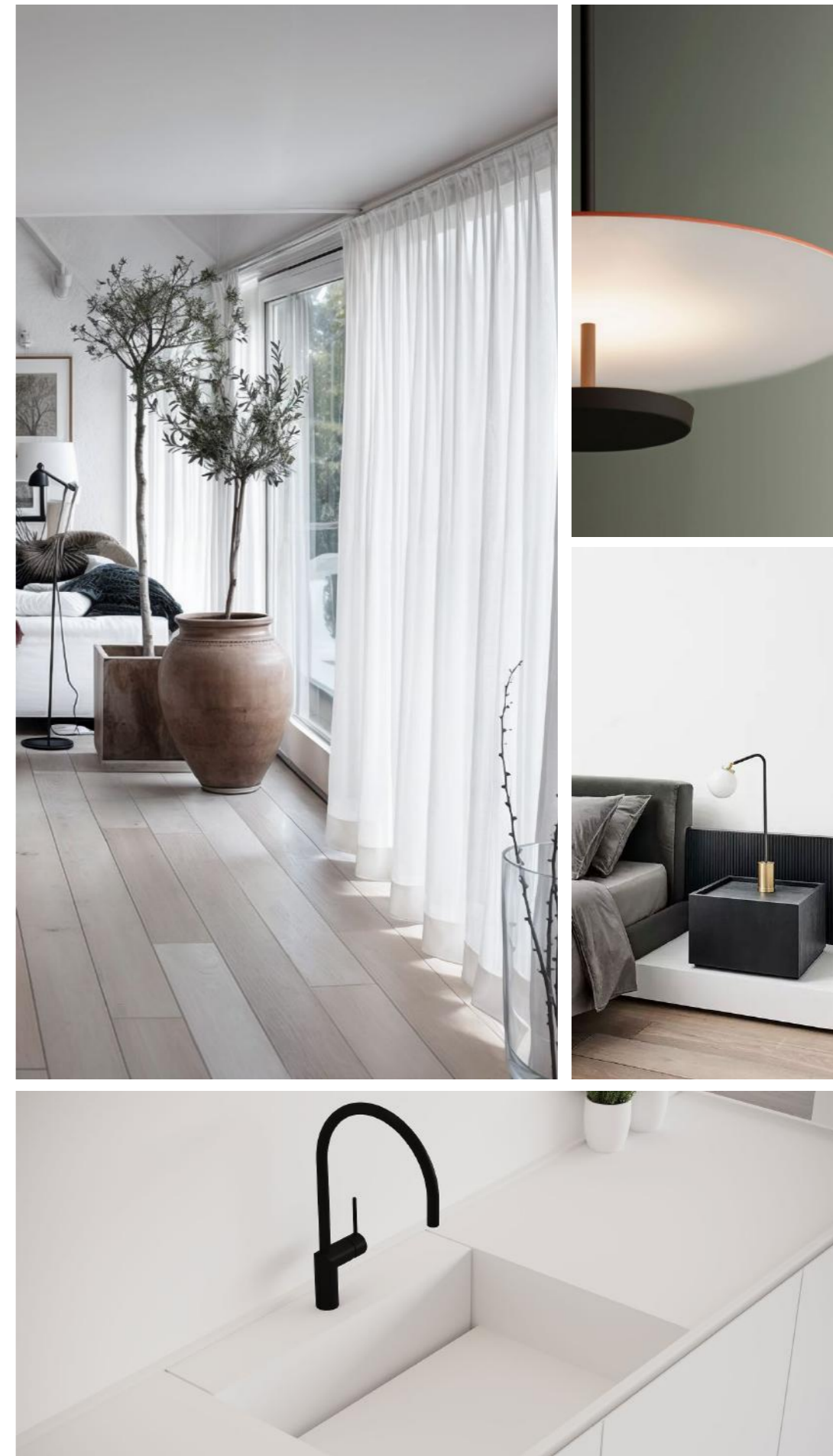
# Al Khawaneej Villa

YEAR	2021
LOCATION	AL KHAWANEEJ . DUBAI
BUDGET	350 K
SQM	300
ROLE	DESIGN & SUPERVISION

Nestled in the tranquil landscapes of Dubai's Al Khawaneej, this villa is a testament to minimalism, elegance, and functionality. Designed for a family of five, the space embraces purity with white plaster walls, high ceilings, and uninterrupted architectural lines. A serene courtyard pool sits at the heart of the villa, enhancing its airy and open feel.

Herringbone wood parquet flooring flows seamlessly through every room, adding warmth and texture. The design prioritizes functionality with trimless AC slots and hidden storage solutions, ensuring a clutter-free environment. In the living room, a custom L-shaped white sofa pairs with a minimal pantry and sleek, concealed storage. A floating travertine bench adds sophistication, blending effortlessly with the space. The kitchen, with its open island and integrated lighting, extends the villa's refined aesthetic.

Each bedroom is uniquely designed, featuring themed spaces for the children while the master suite remains a tranquil retreat. A floating bench beneath the bed reinforces the villa's weightless design philosophy. Throughout, the focus remains on clean, straight lines and purposeful details. Every element is carefully curated to create a harmonious balance between simplicity and luxury, making this home a true sanctuary of modern minimalism.

































# City Walk Apartment

YEAR	2021
LOCATION	CITY WALK . DUBAI
BUDGET	500 K
SQM	150
ROLE	DESIGN & SUPERVISION

This residential project in City Walk, Dubai, modernized a 3-bedroom apartment cost-effectively through strategic interventions. Natural wood flooring replaced existing surfaces, while a wooden panel unit with tinted mirrors created visual spaciousness and provided practical storage solutions.

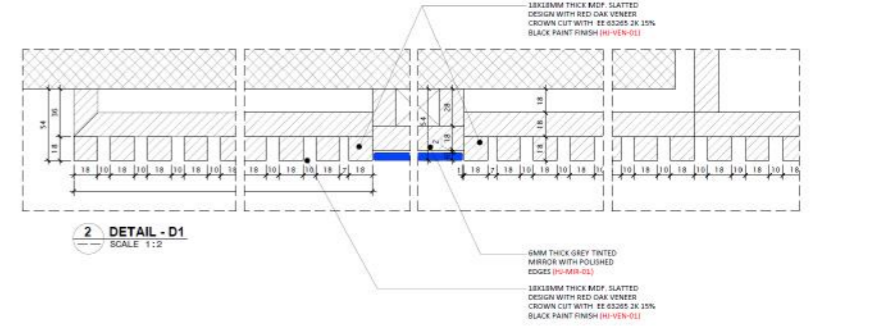
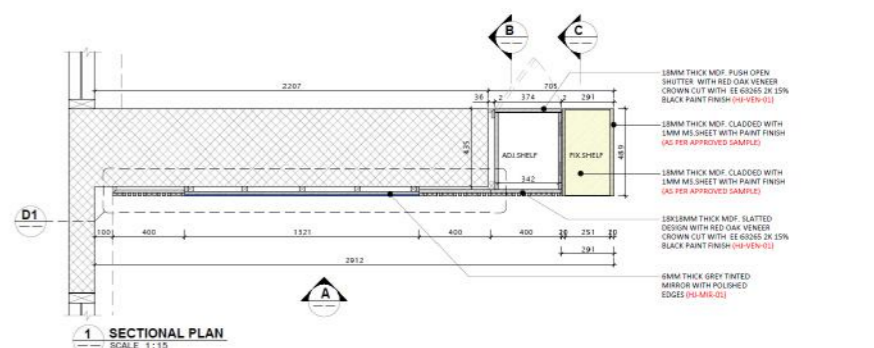
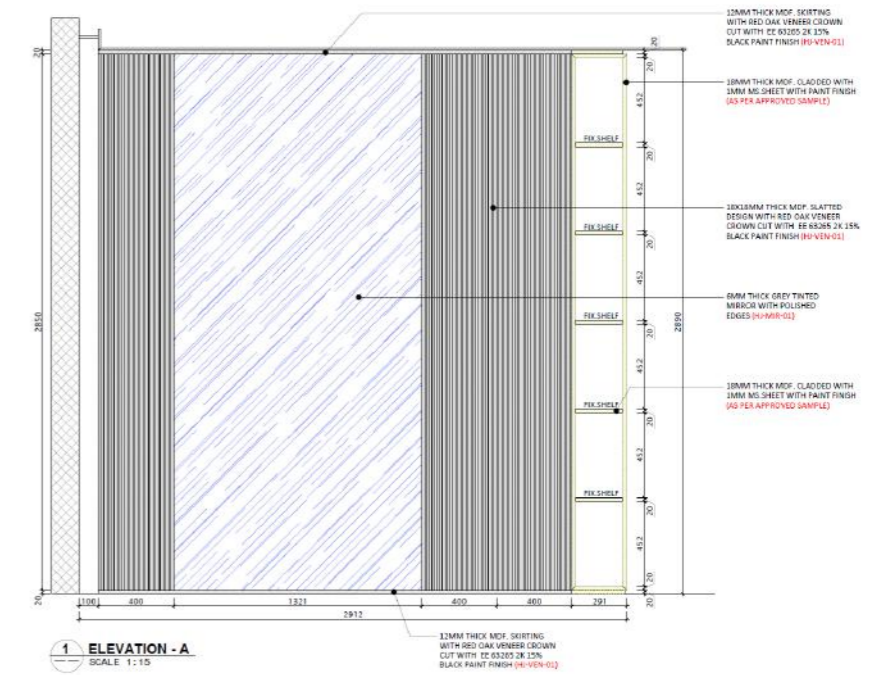
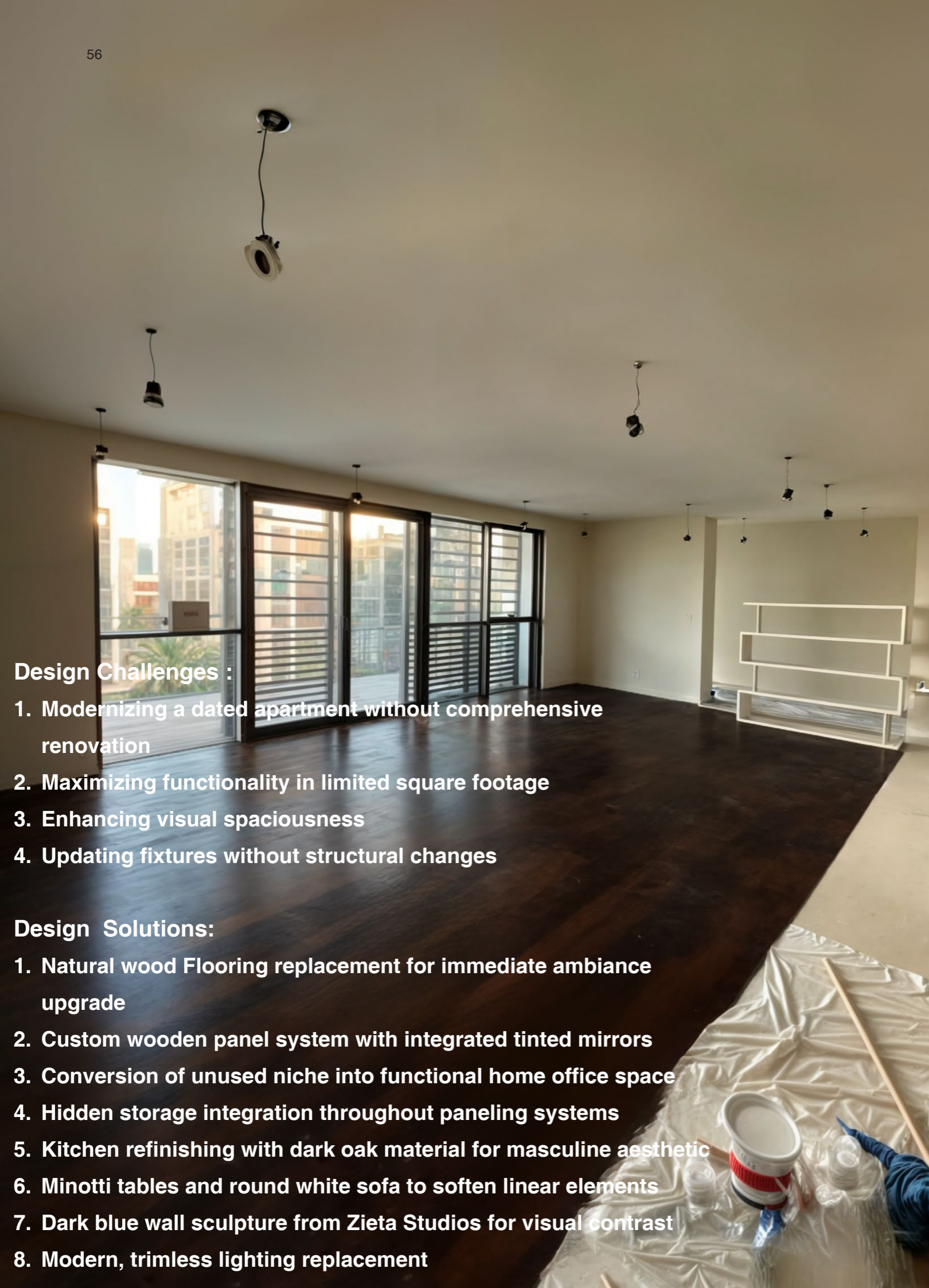
An underutilized niche transformed into a functional home office with a floating desk unit, seamlessly connecting to the wall paneling system. Minotti dining and coffee tables paired with a round white sofa softened the linear elements throughout the space.

A dark blue wall sculpture from Zieta Studios serves as a striking focal piece, breaking the monotony of black elements with bold contrast. Modern trimless spotlights replaced outdated lighting, while the kitchen underwent conversion from standard white cabinetry to rich wooden finishes.

These targeted modifications delivered a sophisticated, masculine aesthetic for the 40-year-old bachelor client without comprehensive renovation, maximizing visual impact while maintaining budget efficiency.







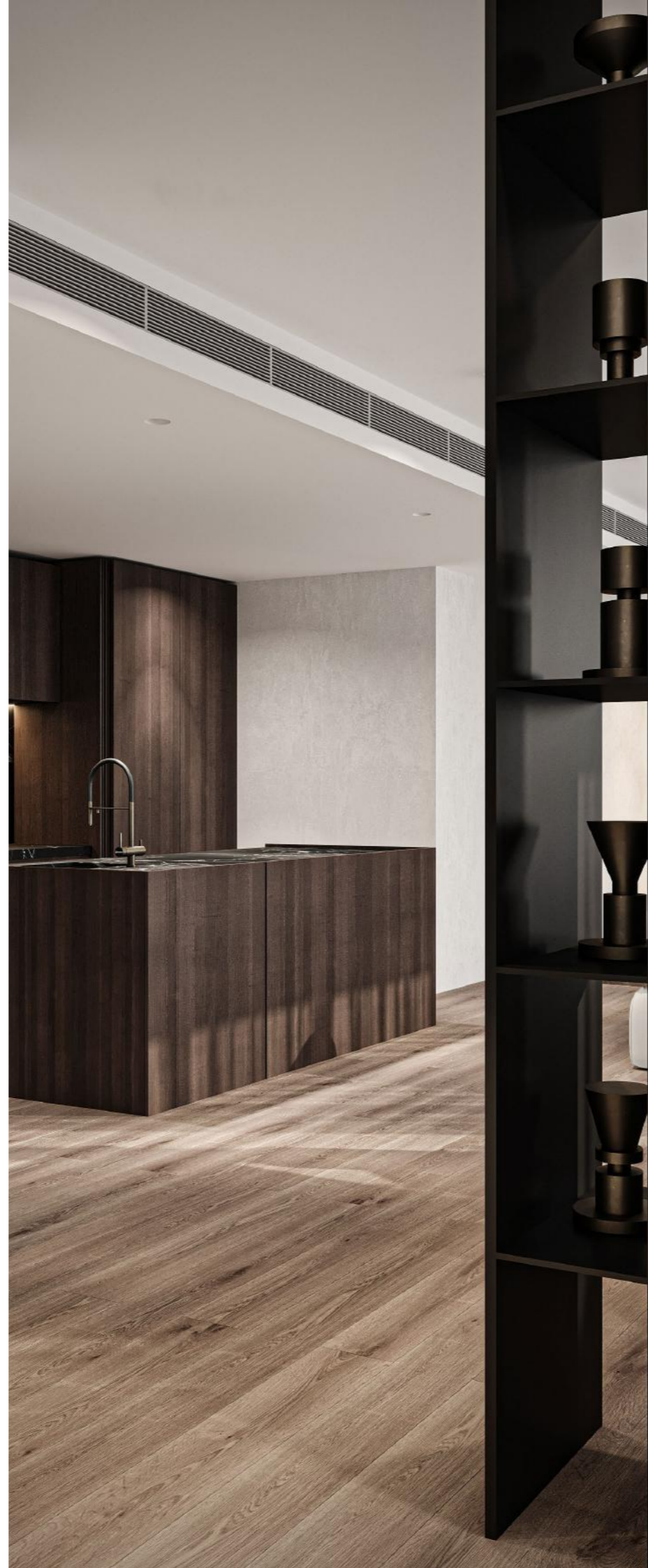
**Design Challenges :**

1. Modernizing a dated apartment without comprehensive renovation
2. Maximizing functionality in limited square footage
3. Enhancing visual spaciousness
4. Updating fixtures without structural changes

**Design Solutions:**

1. Natural wood Flooring replacement for immediate ambiance upgrade
2. Custom wooden panel system with integrated tinted mirrors
3. Conversion of unused niche into functional home office space
4. Hidden storage integration throughout paneling systems
5. Kitchen refinishing with dark oak material for masculine aesthetic
6. Minotti tables and round white sofa to soften linear elements
7. Dark blue wall sculpture from Zieta Studios for visual contrast
8. Modern, trimless lighting replacement



















# Downtown Apartment

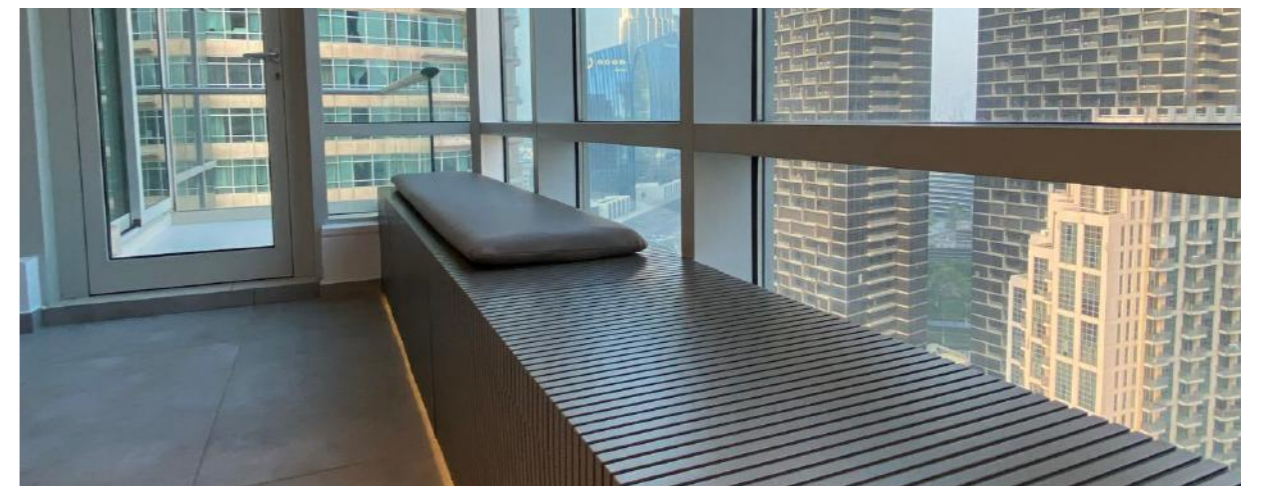
YEAR	2020
LOCATION	DOWNTOWN . DUBAI
BUDGET	700 K
SQM	150
ROLE	DESIGN & SUPERVISION

This project in Downtown Dubai focused on the complete renovation of an outdated apartment. The space had dull walls, uneven ceiling levels, oversized AC grills, multiple tiling materials, and a closed-off kitchen. The bathrooms featured old bathtubs, and storage was insufficient.

The design aimed for a masculine, modern aesthetic, tailored for a man in his 40s. Key upgrades included a seamless grey glossy paneling system to unify the space and an open-plan kitchen with a Corian island for a larger, more functional layout.

A standout design element was the floating wooden bench spanning the full length of the living room. It served multiple functions—providing seating with a view of the high-rise skyline, integrating a planter box, incorporating storage drawers, and featuring a decorative structure with lighting.

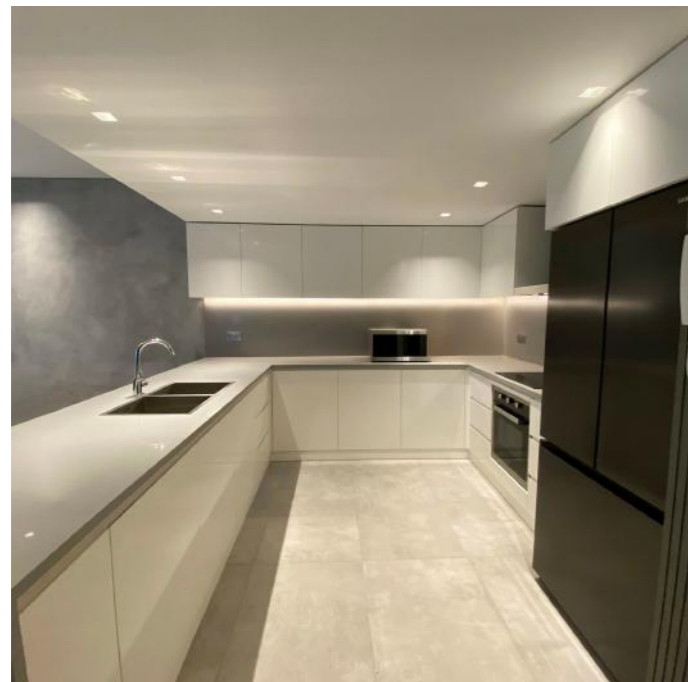
Storage solutions were implemented throughout, with hidden cabinets in the living room, bedrooms, and bathrooms. Walk-in showers replaced bathtubs for a sleek, spacious feel. A mirrored unit at the entrance concealed the TV box, while striped paneling added continuity. A new lighting scheme, streamlined ceilings, and cohesive materials transformed the apartment into a sophisticated, well-organized living space that maximized storage, aesthetics, and functionality.





**Kitchen:**

- Outdated and narrow layout
- Closed from both sides, restricting movement
- Cluttered ceiling with too many elements
- Lacked a functional and modern design



- Removed old cabinets and redesigned the kitchen
- Installed a simple gypsum ceiling with proper lighting
- Opened the space by adding a full island

**Living Room & Kitchen Wall :**

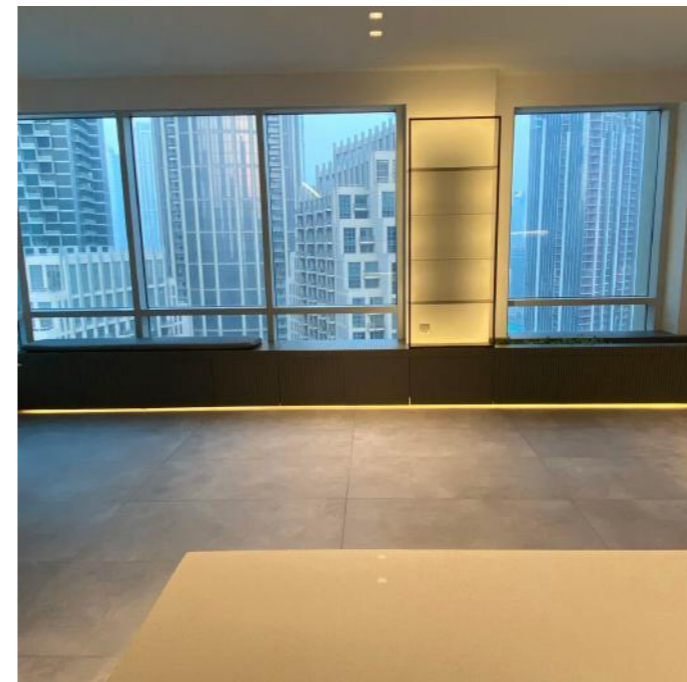
- Closed kitchen made the apartment feel smaller
- Outdated white tiles gave a dull appearance
- Lacked a seamless transition between spaces
- Old big Ac grills need to be changed



- Broke the wall to create an open kitchen with a Corian island.
- Replaced outdated white tiles with large seamless gray porcelain tiles.
- Improved overall functionality and modernized the kitchen

**Living Room:**

- Uneven wall levels disrupted the design
- Bulky concrete structure under the windows reduced space
- Lacked storage options for everyday items



- Installed a full-length wooden drawer cabinet for storage
- Added a leather-cushioned bench for comfortable seating
- Introduced a black metallic frame with integrated lighting for aesthetics

**Bathroom :**

- Cluttered design with too many elements
- Old bathtub occupied too much space
- No proper storage for bathroom essentials



- Used white porcelain for a bright and modern look
- Installed a mirrored cabinet with hidden storage
- Replaced the bathtub with a sleek walk-in shower with glass partition
- Simplified the design for a cleaner, more spacious feel



**Master Bedroom :**

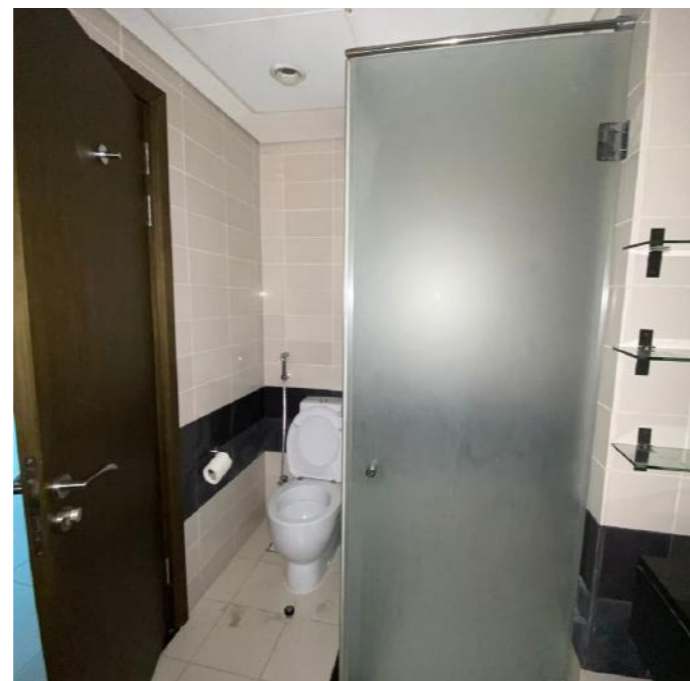
- Old wooden cabinet with a narrow design
- Lacked storage and functionality
- Did not blend well with the surrounding space



- Installed a seamless, glossy white cabinet with a mirror
- Added a dressing unit with a mirror near the door
- Created a unified, modern look that blends with the space
- Enhanced functionality with improved storage

**Master Bathroom :**

- Shower was positioned too close to the WC
- Lacked proper storage for bathroom essentials
- Small vanity made the space feel cramped



- Shifted the shower to the opposite side for better layout
- Installed a long vanity with an integrated storage unit
- Created a hidden storage cabinet made from Corian to blend with the walls
- Added a shelving system with a large mirror to enhance space perception

**Guest Wc :**

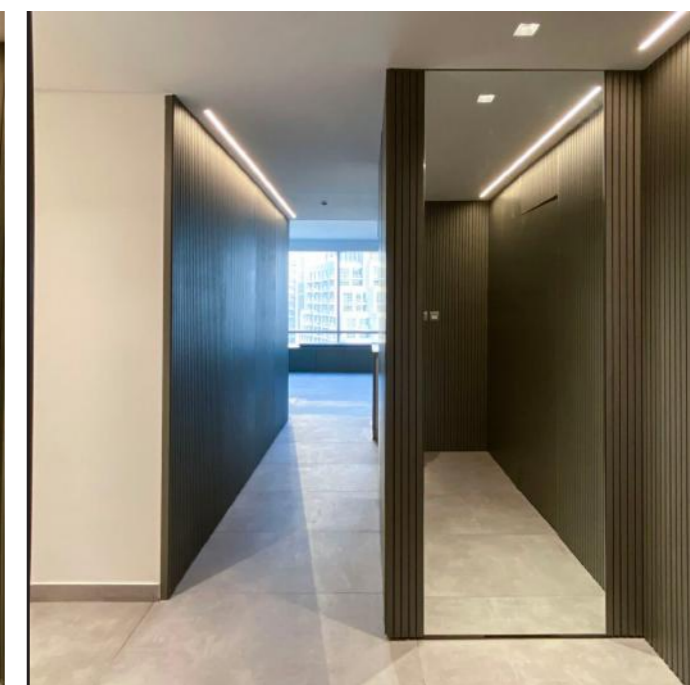
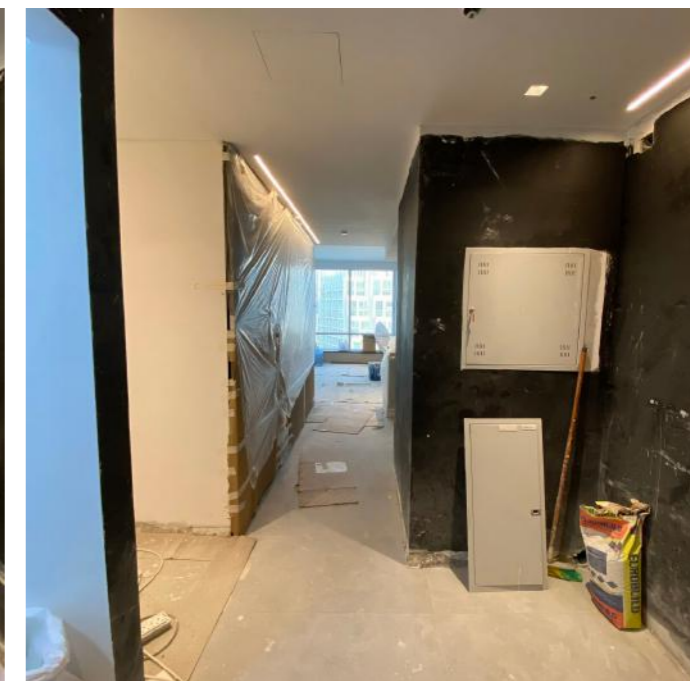
- Old and outdated design
- Dull walls that lacked character
- Exposed bathroom door disrupted aesthetics



- Designed a seamless wall to integrate with the entrance
- Added hidden door panels with vertical stripes for a modern effect
- Created a visually unified look with continuous wall finishes
- Improved overall aesthetics by making the space feel larger and cleaner

**Hallway :**

- Exposed TV box was visually unappealing
- Entrance lacked cohesion
- Disruptive contrast between the box and surrounding walls



- Installed a full mirror cabinet to hide the TV box
- Added striped paneling around the mirror for a seamless effect
- Connected all wall elements for a clean, cohesive entrance look
- Blended the design to integrate smoothly with the surrounding space

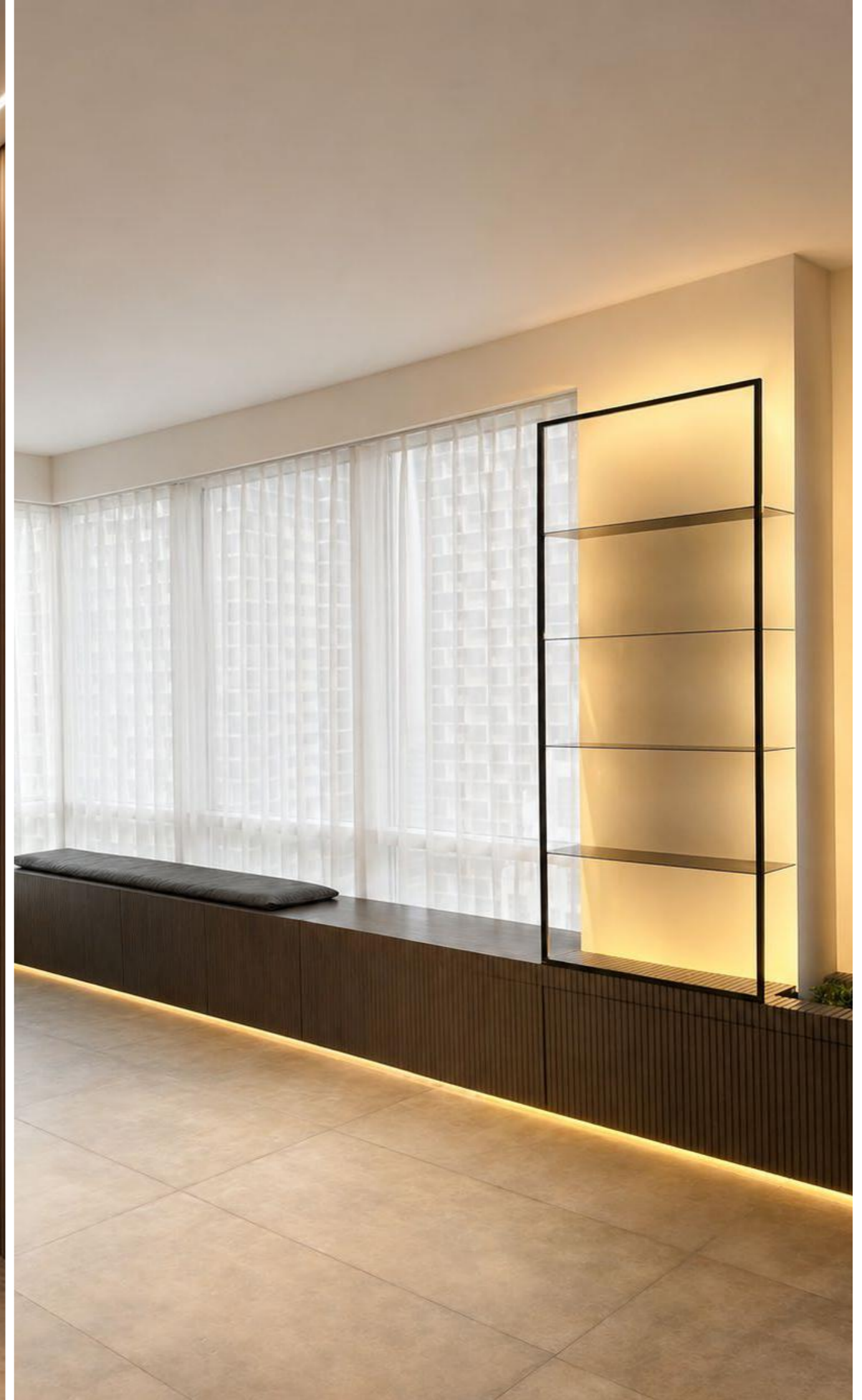






















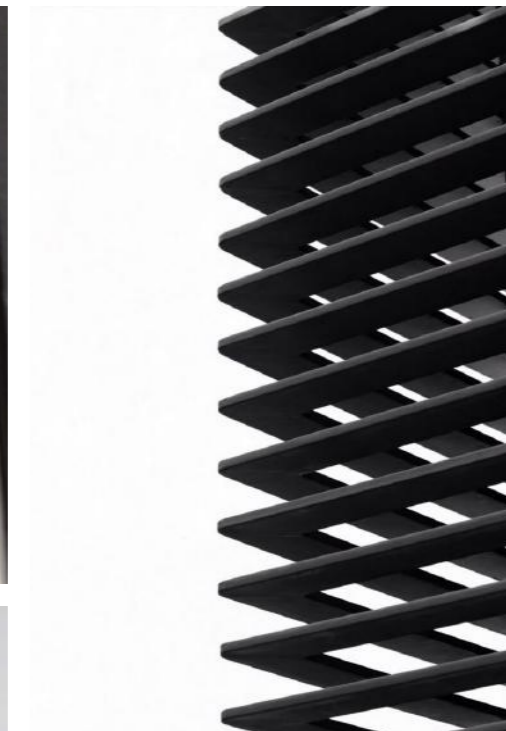
# Al Kendari Villa

YEAR	2018
LOCATION	MIRDIF . DUBAI
BUDGET	2 MILLION
SQM	400
ROLE	DESIGN

This villa in Al-Khawaneej, Dubai, was designed to embody a clean, high-tech, and minimal aesthetic, with a strong emphasis on customization and advanced technology. The design features bespoke details, incorporating brass and dark brass elements that add depth and contrast throughout the space. Each room was given a distinct identity through custom-designed doorknobs and elevator buttons, reflecting meticulous craftsmanship and attention to detail.

A central server rack serves as the technological hub of the villa, seamlessly integrating smart systems while maintaining a sleek, futuristic feel. Straight lines and strip lighting enhance the modern ambiance, emphasizing precision and clarity in the design. A striking blue aquarium acts as a focal point, casting dynamic reflections on the travertine flooring and introducing movement to the space.

The carefully curated material palette of travertine, black metal, and brass reinforces the villa's sophisticated and futuristic character. These elements create a perfect balance between innovation and elegance. Every detail was meticulously tailored to align with the client's vision, resulting in a refined living environment that merges high-tech functionality with timeless design.







XX XY



























# DIFC Penthouse

YEAR	2020
LOCATION	DIFC . DUBAI
BUDGET	1.7 MILLION
SQM	325
ROLE	DESIGN & SUPERVISION

Nestled in the heart of DIFC's Limestone Building, this apartment underwent a complete transformation to reflect both functionality and artistic elegance. The owner, a passionate art collector, had an extensive collection but lacked the proper space to display it. The outdated design and limited storage made the apartment feel cluttered and impractical.

To address this, we completely redefined the space. The old flooring was replaced, the AC system upgraded to sleek, trimless slots, and lighting was strategically redistributed to enhance the ambiance. A major challenge was the large glass openings that exposed the apartment to the neighbors. We closed these with a full cement board, creating a striking gallery wall to showcase the artwork. The open kitchen, which once blended into the living space, was enclosed, providing another canvas for art.

Every bathroom, every cabinet, and every hidden storage space was meticulously designed to ensure seamless functionality without compromising aesthetics. The result—a living space that feels like a private gallery, where every piece of art has its place, and every element serves a purpose. A refined, modern home that celebrates both design and collection in perfect harmony.





**Master Bedroom:**

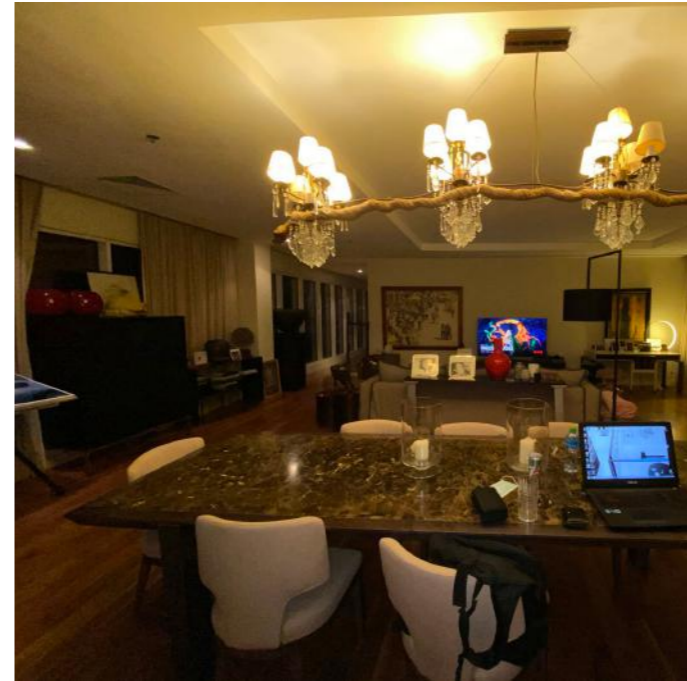
- Cluttered space with no hidden storage.
- Lack of embedded cabinets for organization.
- Ceiling had an open niche.
- Outdated parquet

**Master Bathroom:**

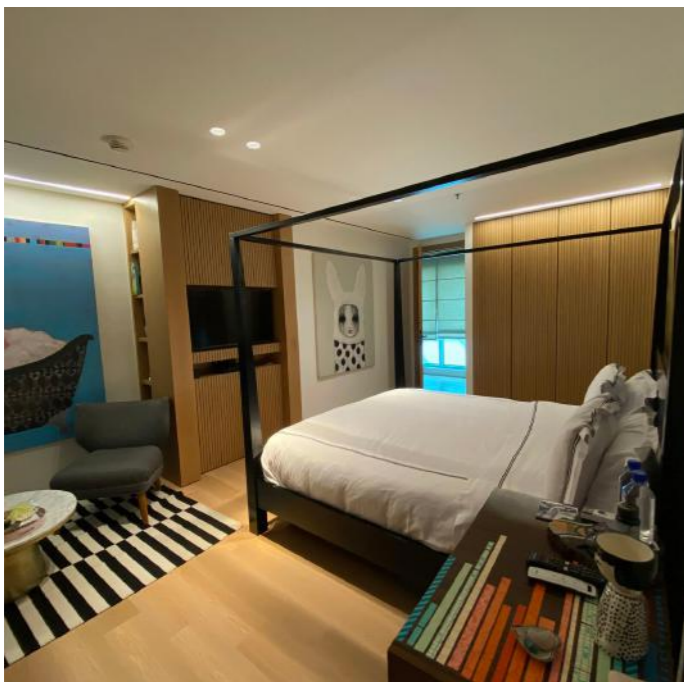
- Large, unused bathtub
- Insufficient vanity space.
- Multiple mismatched cabinets cluttering the area.
- Lack of organized storage.

**Living Room:**

- Outdated chandelier and poor lighting.
- Dark ambiance with heavy curtains.
- Cluttered space with multiple artworks.
- Lack of a cohesive design

**Guest Bathroom:**

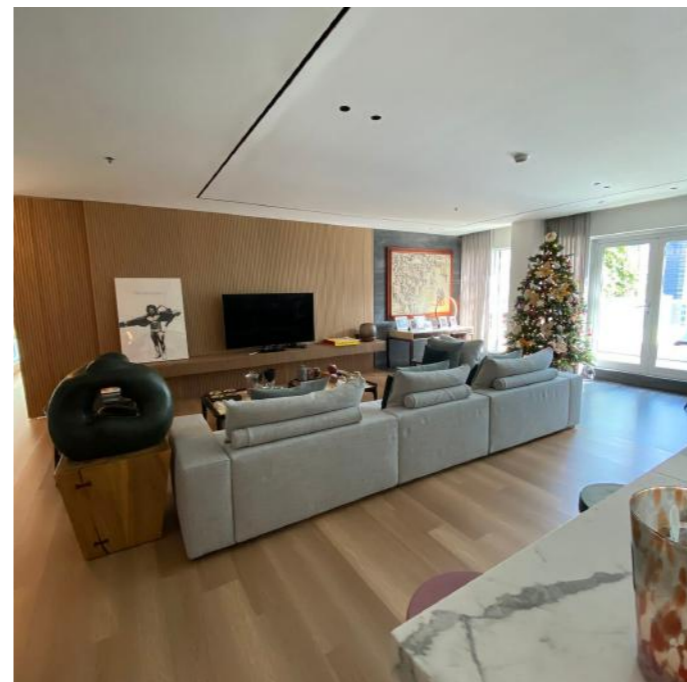
- Outdated design with bulky counter & vanity.
- Space felt cluttered.
- Mismatched materials.



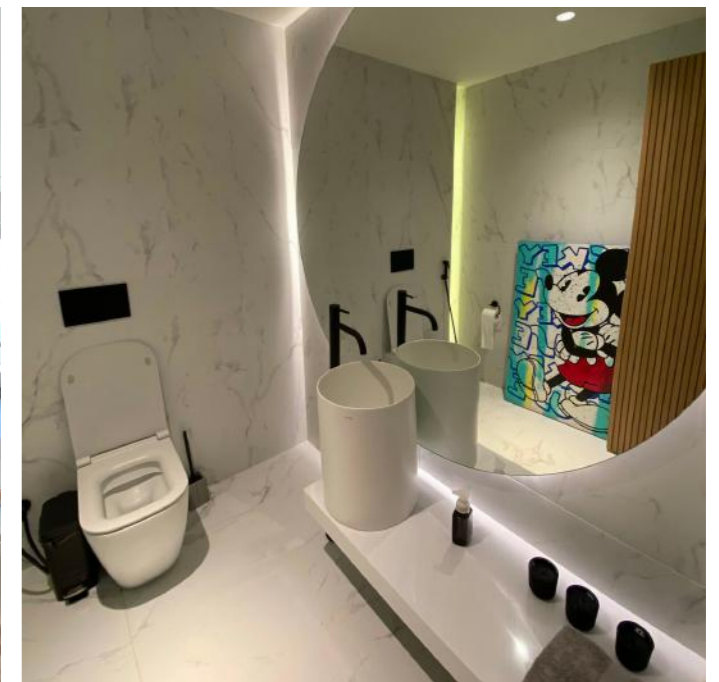
- Installed customized cabinets with hidden storage for jewelry and personal items.
- Introduced a sleek TV unit with integrated storage.
- Closed the ceiling niche for a seamless look.
- Changed the door orientation for better access.



- Replaced the bathtub with a spacious walk-in shower with glass partition.
- Installed a white marble vanity for a cohesive look.
- Added a floating cabinet with drawers for makeup and grooming essentials.
- Integrated hidden storage cabinets to keep the space tidy.



- Introduced a new gypsum wall to serve as an art gallery.
- Installed a custom-built vanity and sliding doors for a seamless look.
- Replaced curtains with a modern partition for controlled light and privacy.
- Enhanced lighting to brighten the space.



- Used a single white marble material for a sleek, uniform look.
- Installed a floating vanity with a round basin for an artistic touch.
- Added a round mirror to enhance the visual appeal.
- Created a hidden door that blends seamlessly with the wall design.



**Kitchen:**

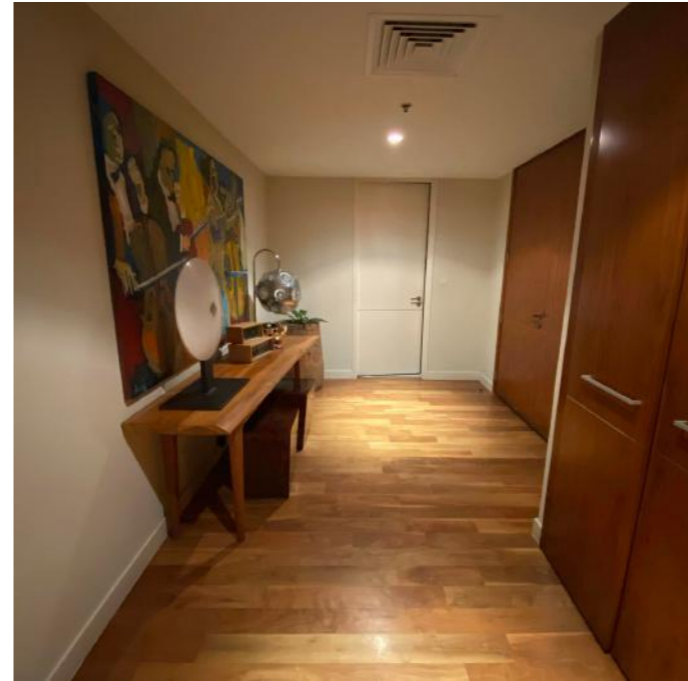
- Outdated cabinets with limited storage.
- Open layout lacked privacy.
- Inefficient use of space.
- Small workspace for meal preparation.

**Hallway :**

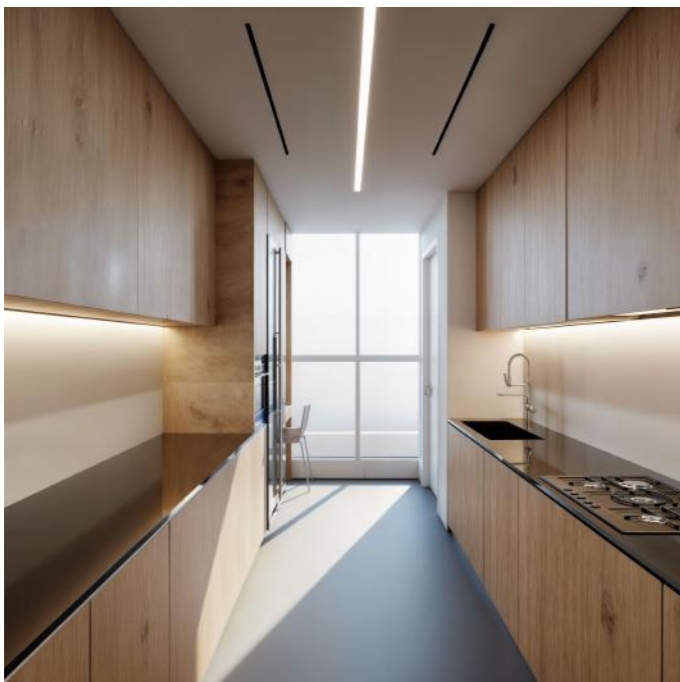
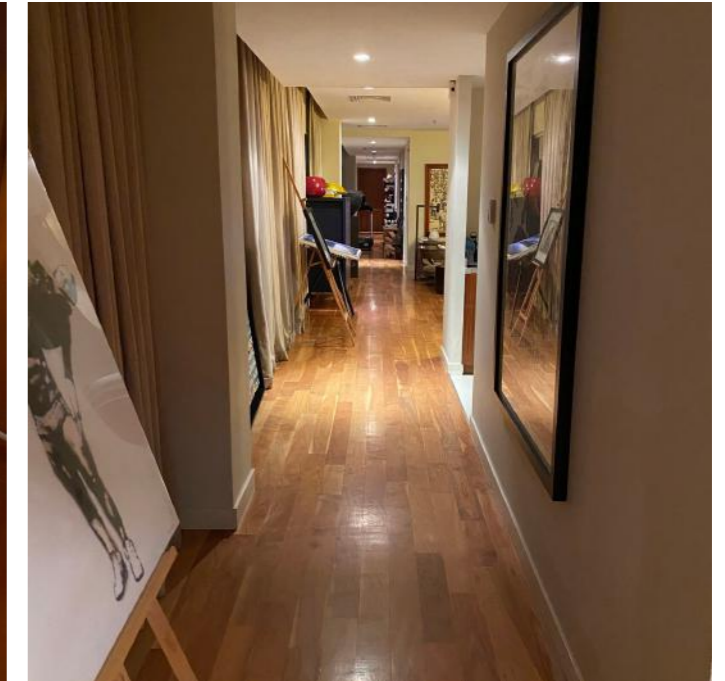
- Cluttered design with too many materials.
- Mismatched doors and cabinets.
- Lack of uniformity in finishes.
- Space lacked proper lighting.

**Hallway :**

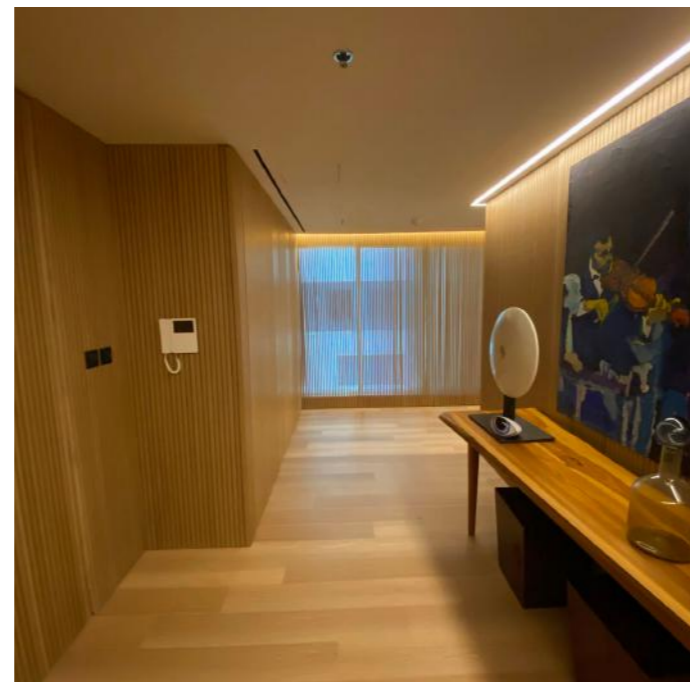
- Old AC slots were large and visually disruptive.
- Cluttered space with scattered items.
- Lighting was not well-distributed.

**Hallway :**

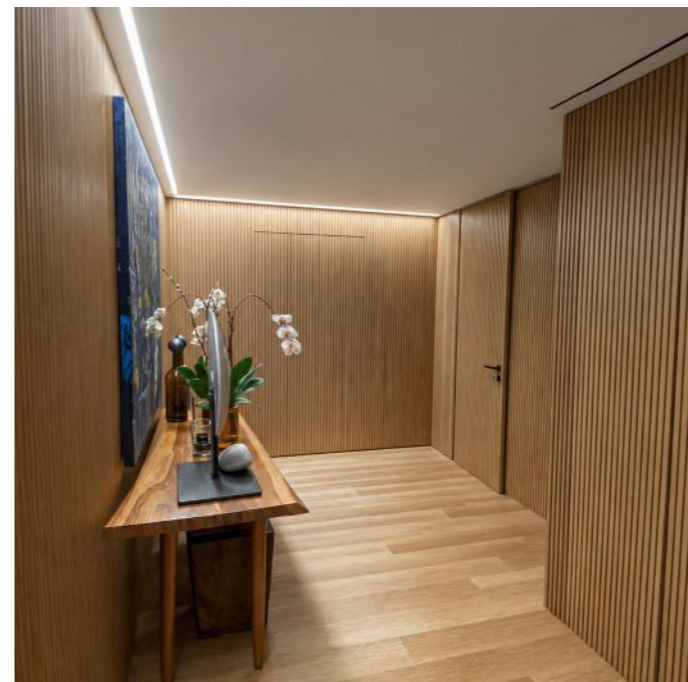
- Oversized AC vents disrupted the visual harmony.
- The space felt disorganized.
- Lighting lacked uniformity.



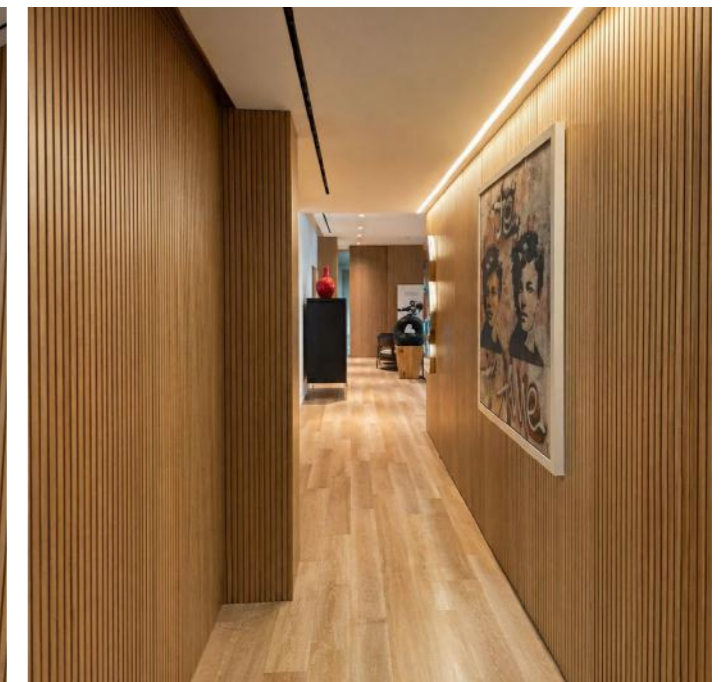
- Fully enclosed the kitchen for a more functional layout.
- Introduced a dedicated seating area for the chef.
- Optimized layout to create a larger space for the maids and storage.



- Replaced curtains with Japanese-style see-through panels for filtered light.
- Introduced paneling throughout for a cohesive aesthetic.
- Created hidden storage within the paneling.
- Installed new parquet for a refreshed look.



- Unified all materials with consistent paneling.
- Used the same finish for doors and cabinets.
- Introduced linear lights for a modern ambiance.
- Created a streamlined and visually harmonious design.



- Installed trimless black AC slots for a sleek appearance.
- Enclosed the kitchen entrance with paneling.
- Introduced a gypsum wall to organize artwork display.
- Added linear lighting for a balanced, well-lit space.













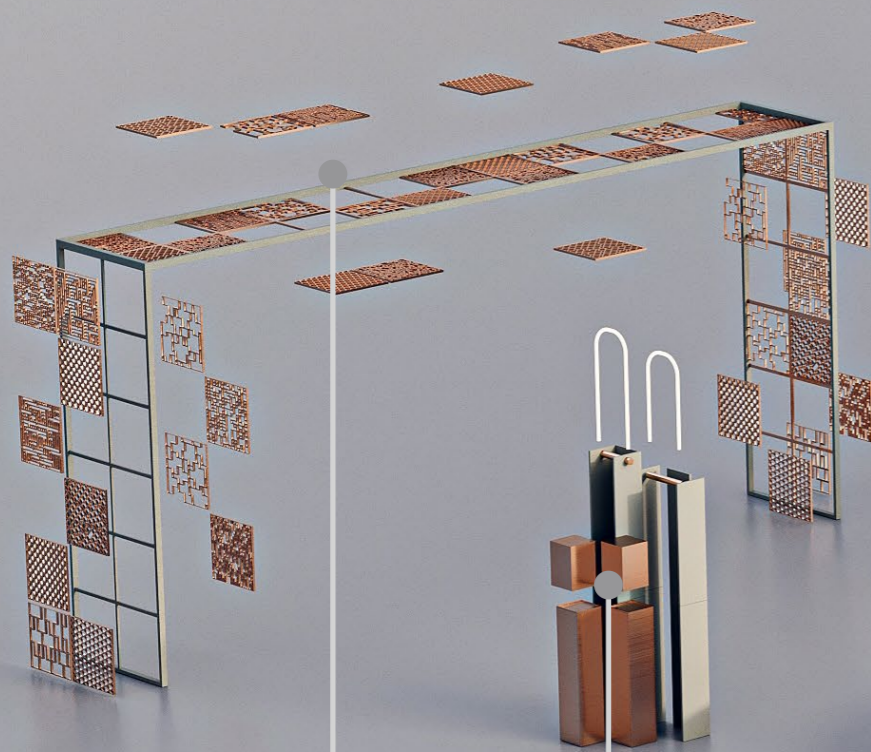






# **COMMERCIAL PROJECTS**

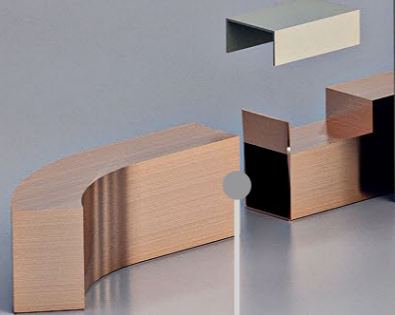




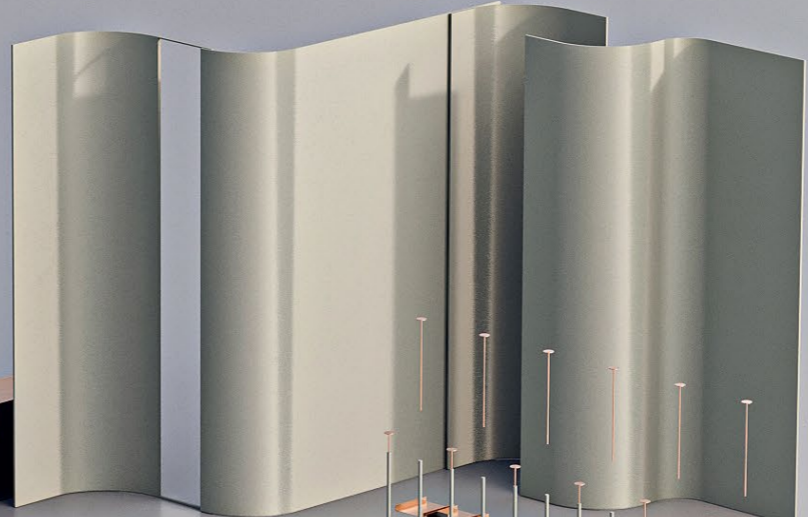
10. ZENOBIA RESTAURANT  
2018



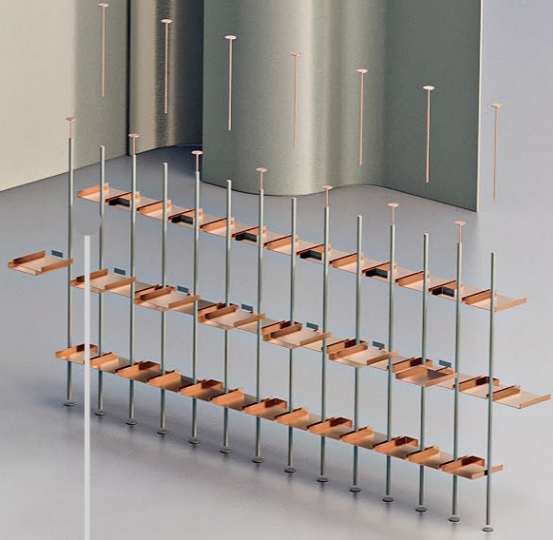
11. ROCK BY GS STAND  
2023



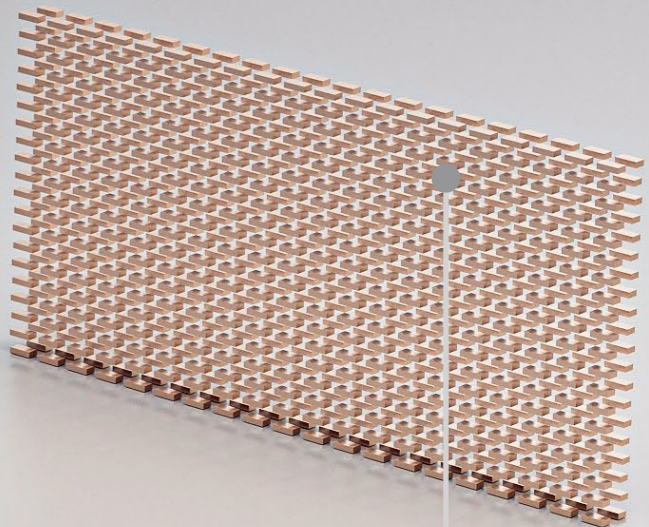
12. SAVVA CAFE  
2023



13. HASS CAFE  
2024



14. Latifa Saeed Workshop  
2024







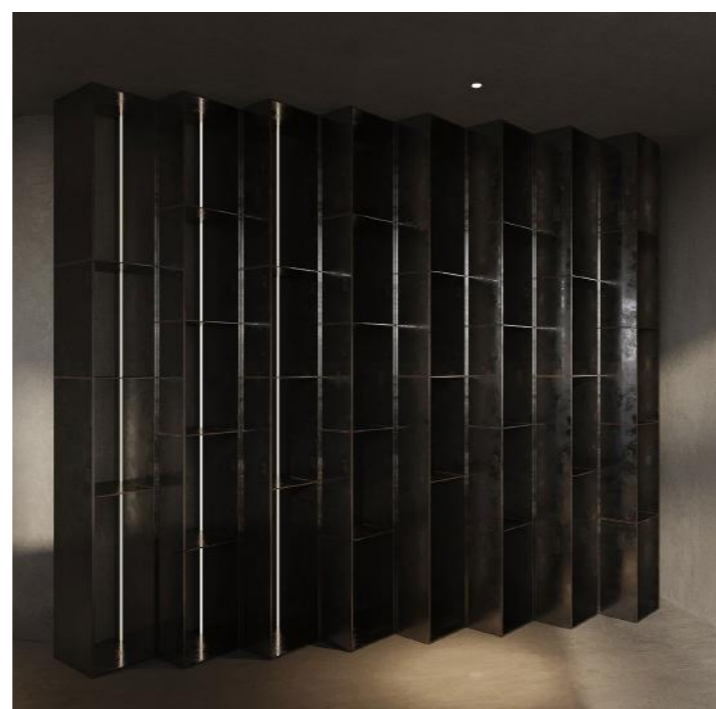
Haas Café in Jumeirah is more than just a café; it's a space where design, creativity, and community converge. Located in a transformed residential building, the café embraces its unique setting with expansive facades that flood the interior with natural light. The design is intentionally minimal yet bold, featuring raw concrete surfaces and a striking metal bar at the center, creating a strong visual anchor.

Bespoke metallic chairs are scattered throughout, adding an artistic touch. More than a café, Haas serves as a creative hub, a place for designers, artists, and thinkers to showcase their work, host workshops, and engage in open discussions. The industrial aesthetic, combined with the ever-changing artistic elements, makes it a dynamic, evolving space. It's not just a café; it's a statement, a platform for art, design, and bold ideas, seamlessly blending function and creativity in the heart of Jumeirah.



# Haas Cafe

YEAR	2025
LOCATION	JUMIRAH . DUBAI
BUDGET	600 K
SQM	215
ROLE	DESIGN & SUPERVISION







haas


























Amidst the dynamic energy of City Walk Dubai, this restaurant stands as a testament to industrial sophistication. Inspired by the primal essence of charcoal cooking, the space is a fusion of raw textures and refined artistry. Steel beams, aged wood, and concrete surfaces establish a bold foundation, while handcrafted metal panels and sculptural wall lights introduce depth and intrigue.

Every design choice was meticulously curated to reflect the brand's identity, seamlessly integrating function and aesthetics. A carefully orchestrated interplay of warm lighting enhances the textures, casting dramatic shadows that transform the space throughout the day. Beyond just a dining venue, this restaurant is an experience where the atmosphere, the craft, and the cuisine ignite a sensory journey. Here, industrial design is reimagined, not just as a backdrop, but as an integral part of the culinary adventure.



# Zenobia Resturant

YEAR	2018
LOCATION	CITY WALK . DUBAI
BUDGET	2.5 MILLION
SQM	240
ROLE	DESIGN & SUPERVISION

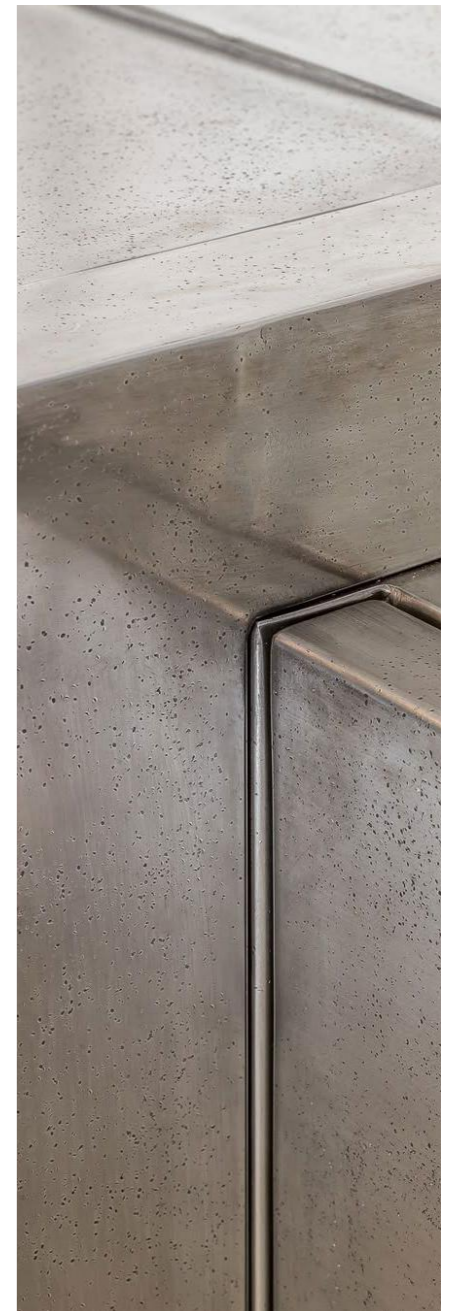
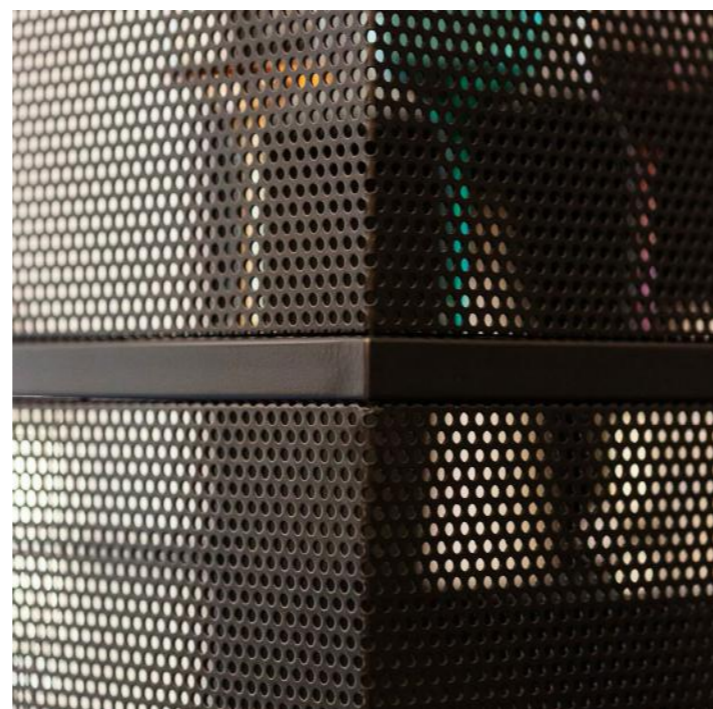
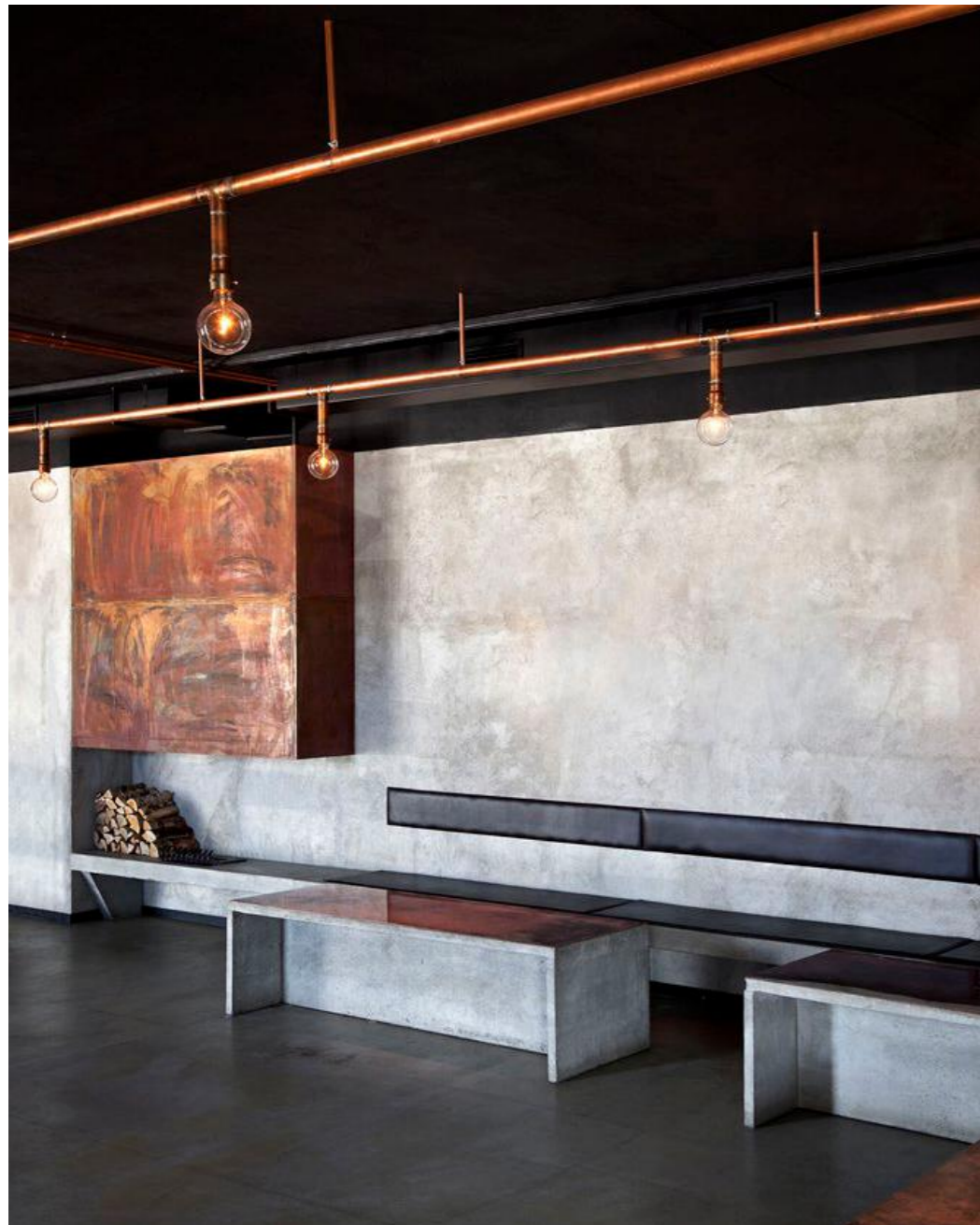










Photo X Render











Savva Café in Sharjah was transformed from an outdated space into a striking example of futuristic design. The entrance was reimagined with aligned parking lines and a sculptural glass niche for a dramatic first impression.

Inside, raw concrete surfaces meet reflective metallic mirrors, amplifying movement and adding depth. Sharp lines blend with fluid curves, while hidden display units and an 8-meter slanted ceiling with concealed spotlights and AC maintain a clean, uninterrupted aesthetic.

The result is a bold, avant-garde café that fuses industrial strength with futuristic sophistication, offering an immersive and memorable experience.





# Savva Cafe

YEAR	2022
LOCATION	AL JADA . SHARJAH
BUDGET	2 MILLION
SQM	80
ROLE	CONCEPT DESIGN











SAVA

SAVA  
SAVA  
SAVA  
SAVA  
SAVA  
SAVA  
SAVA  
SAVA  
SAVA  
SAVA













For RockBuyGS, a brand known for its bold and energetic jewelry, we created a striking stand in Mall of the Emirates. The challenge was to design an eye-catching structure within a tight 3-meter space while staying true to the brand's identity.

The concept was inspired by a shopping bag—its form translated into a sleek structure with a glowing light-handle at the top. Four distinct display elements, each at different heights, framed the space, with an LED screen at the center showcasing the brand's essence. Every jewelry piece was housed in a well-crafted display box with integrated storage. A deep blue carpet grounded the design, defining the stand with a strong visual presence.

This project successfully transformed a compact space into a dynamic showcase, blending aesthetics with function while amplifying the brand's bold statement.

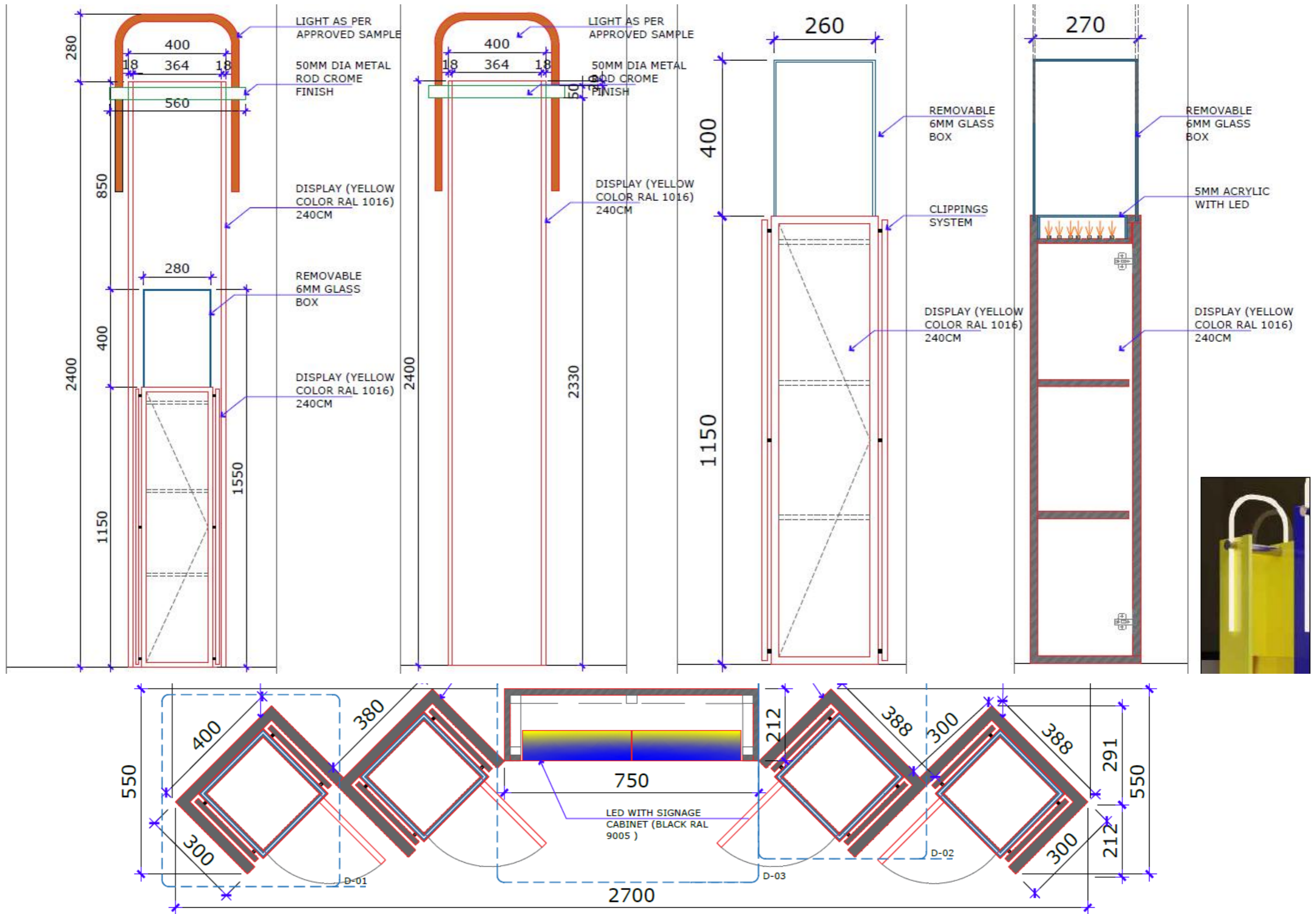


# Rock By Gs MOE

YEAR	2024
LOCATION	MOE THAT SHOP . DUBAI
BUDGET	100 K
SQM	25
ROLE	DESIGN & SUPERVISION
















**LATIFA SAIED**  
 (1985 - 2018)

**لا تفرقة سعيدي**  
 (1985 - 2018)

**العمارة كإستراتيجية للتأقلم**  
 تمتد العمارة الاستراتيجية لعمارة سعيدي من عام 1985 من خلال العمارة التي تتعامل مع التغير والبيئة المتغيرة. العمارة الاستراتيجية هي العمارة التي تتعامل مع التغير والبيئة المتغيرة. العمارة الاستراتيجية هي العمارة التي تتعامل مع التغير والبيئة المتغيرة.

**اسم العمل: الكورس**  
**موقع العمل:**

**ARTIST BIOGRAPHY**  
 Latifa Saied is a Lebanese architect, artist, and writer. She is known for her work in architecture and art, particularly her focus on sustainable and socially responsible design. She has worked with various organizations and has been a vocal advocate for the role of architecture in addressing social and environmental challenges.

**WORKS NAME: AL QURUS**  
**WORKS DATE:**



### **Collaboration with Latifa Saeed – Al-Daroub, Manar Abu Dhabi, 2023**

I had the privilege of collaborating with renowned Emirati artist Latifa Saeed on Al-Daroub, a monumental public art installation presented during Manar Abu Dhabi 2023. My role encompassed refining the design, developing the 3D visual concept, and delivering high-end renders that captured the essence of the work. Beyond the creative scope, I was actively involved in the structural engineering process working closely with engineers and a large team to resolve critical challenges related to durability, balance, and site conditions. I also played a key role in project management, ensuring the artwork was fabricated, transported, and installed safely, with full attention to logistical and environmental factors. The complexity of this sculptural piece required deep collaboration and technical precision, and I was fully committed to protecting the integrity and intellectual property of the work from conception to completion.

















### **Collaboration with Latifa Saeed – Al-Saramadi, 2025**

In Al-Saramadi (2025), I again partnered with Latifa Saeed to bring her artistic vision into reality. I supported the conceptual refinement and engaged directly with the engineering team to address structural feasibility and technical constraints. The project demanded a fine balance between artistic expression and engineering execution, where every design element needed to be both visually coherent and structurally sound. My focus was on bridging those two realms ensuring the form could be realized without compromising the vision. It was a privilege to contribute to such a powerful piece.





















