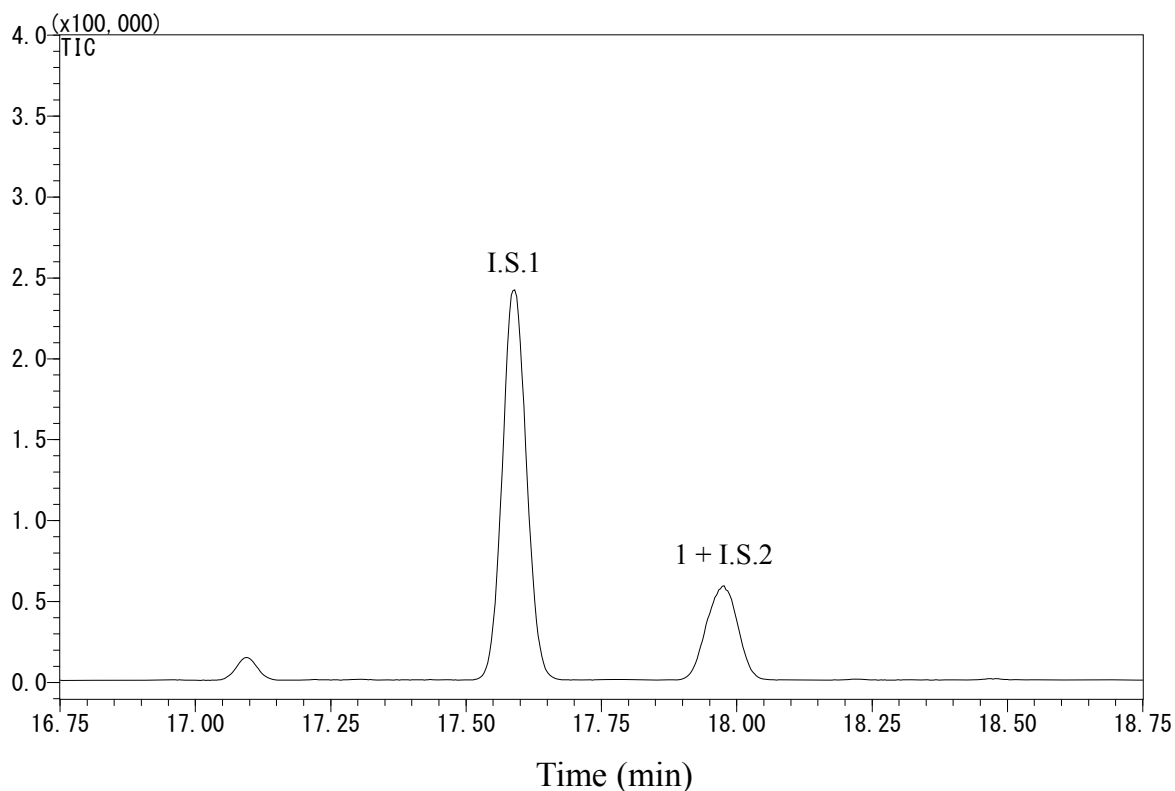


# InertSearch™ for GC

InertCap® Applications

## Aniline

Data No. GA 252-0644



### Conditions

**System** : GC-MS  
**Column** : InertCap Pure-WAX  
0.25 mm I.D. x 30 m df = 0.25 µm  
**Col. Cat. No.** : 1010-68142  
**Col. Temp.** : 60 °C (5 min hold) - 10 °C/min - 200 °C (5 min hold)  
**Carrier Gas** : He 36.5 cm/s  
**Injection** : Splitless 1min  
250 °C  
**Detection** : MS SIM  
Interface Temp. 250 °C  
**Sample Size** : Analyte in Methylacetate  
1 µL  
**Analyte** : 1. Aniline (0.2 µg/mL)  
I.S.1. Naphthalene-*d*8 (0.5 µg/mL)  
I.S.2. Aniline-*d*5 (0.2 µg/mL)

# InertSearch™ for GC

InertCap® Applications

## Aniline

Data No. GA 252-0644

