

SYCAMORE HILLS GOLF CLUB

cottages

FORT WAYNE, INDIANA



HISTORY OF
SYCAMORE HILLS
PAGE 3



HISTORY OF
FORT WAYNE
PAGE 7



TEE TIMES AT
SYCAMORE HILLS
PAGE 9



FIVE-STAR DINING
EXPERIENCE
PAGE 12



WELCOME TO SYCAMORE HILLS GOLF CLUB

Welcome to Sycamore Hills Golf Club! We hope you enjoy your stay at what we consider our very own "little slice of heaven" here in Fort Wayne, Indiana. Whether you are here on business or pleasure, our Club teams will ensure that your stay at the Club will become one of your favorite memories.

Please do not hesitate to reach out to our front office if there is anything you need to make your stay with us more comfortable. All tee times need to be made through our Head PGA Golf Professional, Tim Frazier. Feel free to either call into the Golf Shop to speak with Tim, or simply stop in our Golf Shop and ask for him by name.

We hope you can join us in our Club dining rooms to taste some of the incredible cuisine coming out of our Club kitchen. To make a reservation for either lunch or dinner, simply call the Club and speak with the front desk. We can also deliver food to

the cottages for those who wish for a more private setting. There is a QR code later in this publication that will allow you to view our current à la carte dining menus. For any cottage food service needs, please call and speak with the front desk.

Now get ready, you are about to have a lot of fun!

Warmest regards,



Christopher J. Hampton

CHRIS HAMPTON
GENERAL MANAGER/COO
260-625-4324
champton@sycamorehillsgolfclub.com



TABLE OF CONTENTS

CLUBHOUSE HISTORY	3
COURSE DESIGNER	3
CHAMPIONSHIPS AND HONORS	4
HISTORY OF FORT WAYNE	7
CHECK-IN / CHECK-OUT	9
TEE TIMES	9
WIFI	9
YOUTUBE TV	9
FIREPLACE	10
DINING SERVICES	12
BAR SERVICES	12
NEARBY SHOPPING	13
GENERAL AND EMERGENCY CONTACT	18



TIM FRAZIER
HEAD PGA PROFESSIONAL
260-625-4397
tfrazier@sycamorehillsgolfclub.com



JOHN THOMPSON
GOLF COURSE SUPERINTENDENT
260-625-4551
jthompson@sycamorehillsgolfclub.com



MARIA SANTEL
CLUBHOUSE MANAGER
260-625-4318
msantel@sycamorehillsgolfclub.com



AARON RUBLE
EXECUTIVE CHEF
260-625-4324
aruble@sycamorehillsgolfclub.com



REBECCA ADMIRE
DIRECTOR OF SPECIAL EVENTS
260-625-4587
radmire@sycamorehillsgolfclub.com



REID MORRIS
ASSISTANT CLUBHOUSE MANAGER
260-625-4324
rmorris@sycamorehillsgolfclub.com



LISA KOLBASKY
OFFICE MANAGER
260-625-4324
lkolbasky@sycamorehillsgolfclub.com



HISTORY OF SYCAMORE HILLS

Sycamore Hills Golf Club was founded in July of 1987. The golf course was officially opened on July 2, 1989, when Jack Nicklaus and Tom Kelley played the inaugural round of golf.

The former estate of a prominent Fort Wayne family served as a great foundation for what is becoming one of the finest golf clubs in the country. Combining a great piece of property consisting of mature trees, gentle hills, and the Aboite River with the outstanding design ability of Jack Nicklaus has provided something that is truly a masterpiece.

Sycamore Hills Golf Club has achieved a reputation for design and quality both locally and nationally. We are the only nationally ranked Jack Nicklaus Signature Golf course in the state of Indiana. As one of the premiere private golf club facilities in the United States, we are very proud to be perennially ranked by Golf Digest as a Top 100 course. Along with our nationally recognized golf course our Golf Shop has been part of Golf World Business' Top 100 Golf Shops 10 times. Also, our driving range and practice facilities are currently ranked at No. 64 on Golf Digest Index's Top 75 Practice Facilities.

In 2009 a new era of championship golf dawned at Sycamore Hills Golf Club. The club hosted its first national championship—the 8th USGA Women's State Team Championship including hosting this year's US Girls Junior Championship. The success of this national championship sparked increased interest in future USGA Championships. It also helped solidify a new championship relationship with the PGA of America.

Sycamore Hills is one of those courses that will outlast us all and in the end be a tribute to Jack Nicklaus, and everyone involved in its conception and membership. Sycamore Hills hosted the 2010, 2011 and 2012 Junior PGA Championship featuring the top boys and girls junior golfers in the country.

The evolving legacy continued in 2013, when Sycamore Hills hosted the USGA Girls Junior Championship in 2012. The Web.com Hotel Fitness Championship was contested annually from 2013-15, was nationally televised and has added to our heritage.

ABOUT THE DESIGNER

Jack Nicklaus, already declared "Golfer of the Century," will surely go down in history as one of the world's greatest to have ever played the game. His record of winning 20 major championships may never be equaled. However, his growing international fame as a designer of championship courses may eventually rival or exceed his reputation as a player. Today over 300 Nicklaus-designed courses are open for play throughout the world.

His artistic talent for shaping and molding a golf course to existing terrain results in a remarkable and unique blending of natural beauty with challenging golf. Jack Nicklaus utilizes architecture to create a golf course that is never boring, always exciting and thrilling for both amateur and professional players. No where is his talent more evident than right here at Sycamore Hills!

WHAT JACK HAS TO SAY

"In my opinion, Sycamore Hills is one of the finest sites we've ever had the opportunity on which to design a golf course. It has gorgeous trees, great movement of property, and it had some existing lakes that really functioned quite well. The site had a little river moving through the property, which really afforded a lot of opportunities to create different shots. We had the opportunity to create a very diverse set of holes for Sycamore Hills and the course should be considered as one of the finest golf courses in the United States, as time goes on."

– Jack Nicklaus



GOLF CHAMPIONSHIPS HOSTED

- 2009: USGA WOMEN'S STATE TEAM NATIONAL CHAMPIONSHIPS
- 2010: 35th JUNIOR PGA CHAMPIONSHIP
- 2011: 36th JUNIOR PGA CHAMPIONSHIP
- 2012: 37th JUNIOR PGA CHAMPIONSHIP
- 2013: USGA GIRLS JUNIOR CHAMPIONSHIP
- 2013–2015: WEB.COM TOUR HOTEL FITNESS CHAMPIONSHIP
- MULTIPLE: USGA CHAMPIONSHIPS
- USGA AMATEUR QUALIFIERS
- USGA MID-AMATEUR QUALIFIERS
- INDIANA STATE AMATEUR (3 TIMES)
- INDIANA STATE SENIOR AMATEUR
- STATE CHALLENGE CUP MATCHES
- SYCAMORE HILLS MID-AMATEUR INVITATIONAL
- STATE PGA TEAM CHAMPIONSHIP
- MID-WEST COLLEGIATE TOURNAMENT (4 TIMES)
- INDIANA SECTION PGA PROFESSIONAL CHAMPIONSHIP

GOLF COURSE HONORS

- 1990: #2 BEST NEW PRIVATE COURSE IN UNITED STATES, GOLF DIGEST
- 1991: NUMBER ONE COURSE IN INDIANA, GOLF DIGEST
- 1993: NUMBER ONE COURSE IN INDIANA, GOLF DIGEST
- 1993-2003: RANKED IN TOP 100 GREATEST GOLF COURSES, GOLF DIGEST
- 1993-2001: RANKED IN TOP TWENTY PRIVATE GOLF SHOPS, GOLF SHOP OPERATIONS
- 2007-2010: RANKED IN TOP 100 GREATEST GOLF COURSES, GOLF DIGEST
- 1994: RANKED NUMBER 40 IN UNITED STATES, GOLF DIGEST
- 2011: RATED #69 IN TOP 100 GOLF COURSES, GOLF DIGEST



"The course is always immaculate—never a blade of grass out of place, and I rarely see the Grounds Department! I don't know how they do it."

SYCAMORE HILLS MEMBER



"I am fortunate to play a lot of golf on championship courses, but this course makes this tournament the highlight of my season."

NATIONAL PRO-SCRATCH PARTICIPANT



HISTORY OF FORT WAYNE

Fort Wayne, the county seat of Allen County, derives its name from a U.S. military fort established in 1794 by Gen. Anthony Wayne. This fort, built where the St. Joseph and St. Mary's rivers come together to form the Maumee, followed Wayne's victory over the Miami Indians.

The region was originally the capital of the Miami nation, then known by the name Kekionga. The first European settlers were French fur traders who established their trading post during the 1680s. The place was the main portage between the Great Lakes via the Maumee and the Mississippi rivers. The first French port, named Fort Miamis, was built in 1697 and was part of a group of forts built between Quebec and St. Louis. Following the French and Indian War, the fort was annexed by the British in 1760 and renamed Fort Miami. The British dominion was however short lived. The fort was taken over by the Indians following Pontiac's Rebellion. Indian rule lasted for about 30 years, following which the United States army attacked the region and established their hold. Fort Wayne was built following this victory.

In September, 1813, the fort was besieged by Native Americans, who retreated when General William Henry Harrison arrived with reinforcements. The first settlement took place in 1815 and the fort was abandoned in 1819. Although no traces of the original fort remain, a reconstruction, Historic Fort Wayne, is open to the public.

Fort Wayne was platted in 1824, at which time it was made the county seat. The city charter was obtained in 1840. The local economy was aided by the arrival of the Wabash and Erie Canal in 1843. In 1871, the National League of Professional Base Ball Players was formed and its first game was between the Fort Wayne Kekiongas and the Cleveland Forest Citys on May 4, 1871.

Fort Wayne saw an increase in its population during the 19th century with the arrival of immigrants from Germany and Ireland. The immigrants brought about a mixed culture in the city. The large number of Roman Catholic and Lutheran churches bears testimony to this diversity. In 1893, the city hall, now known as Old City Hall, was built. Today it is occupied by the Fort Wayne History Center.

Fort Wayne suffered serious damage from the flooding of its three major rivers in 1913. Despite these setbacks, Fort Wayne saw the construction of Lincoln Tower, then the tallest building in Indiana, which was completed in 1930.

The oldest college in Fort Wayne is Concordia Theological Seminary, founded in 1846. Saint Francis College (1890), Fort Wayne Bible College (1904), Indiana Institute of Technology (1930), and Indiana University-Purdue University at Fort Wayne (1964) are other four-year institutions.

Fort Wayne is today known for its excellent park system, including the grave of Johnny Appleseed in the Johnny Appleseed Memorial Park. The city boasts the Fort Wayne Children's Zoo and the Foellinger-Freimann Botanical Conservatory.

Today, Fort Wayne is not only the hub of three rivers, it is also a major metropolitan area and the second largest city in Indiana. Fort Wayne continues to progress as corporations and individuals live, thrive and expand together. In fact during the 1980s and 1990s Fort Wayne received accolades as an All-American City and a Most Livable City. It is the home to many of our arts and attractions, our gorgeous Parkview Field ballpark (named the #1 minor league stadium in the US), our award-winning Grand Wayne Convention Center and Museums, art centers, and so much more.

As Fort Wayne advances in the 21st Century, it continues to look forward to a time of invention, innovation, and progress.





CHECK-IN & CHECK-OUT

Check-in time is 2:00PM. Keys are available at the front desk.

Check-out time is 11:00AM. Keys must be returned to the front desk by 11:00AM on the day of your departure, If you are playing golf that morning, please return your keys prior to your scheduled tee time.

TEE TIMES

All tee times must be arranged through the golf shop at [260-625-4397](tel:260-625-4397).

Regular tee times and guest rules are in effect.

COMPLIMENTARY WIFI CODE

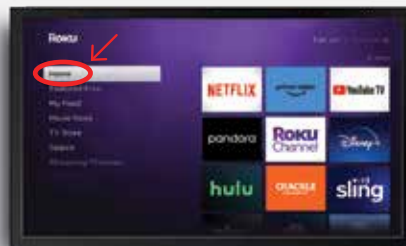
COTTAGE1

COTTAGE2

YouTube TV INSTRUCTIONS

Turn on your TV & Roku by pressing the **POWER** button on your Roku Remote.

Wait a few seconds for the TV to power on.



When the TV is powered on, check that the TV is on the **HOME** menu.

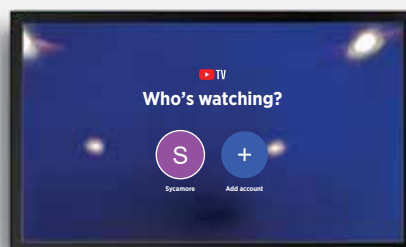
If you are not on the home screen, use the **ARROW** buttons on your remote to navigate to the **HOME** menu.



Using the **ARROW** buttons, navigate to the right side of the screen, pressing the **RIGHT ARROW**.

Use the **ARROW** buttons to navigate to **YouTube TV**.

YouTube TV should be the first option.



You will then see the screen to the left.

Click **SYCAMORE**.



FIREPLACE INSTRUCTIONS

TURNING ON THE FIREPLACE

- ◇ Press the **POWER** button to turn the fireplace **ON**.
The fireplace will first ignite the pilot.
- ◇ Once the pilot flame is established the main burner will be lit.
NOTICE: Whenever the fireplace is cycled from **OFF** to **ON**, the main burner will light on high for 10 seconds before returning to the previous user setting.

ADJUSTING THE FIREPLACE

- ◇ Use the up and down arrows to adjust the flame height, then press **SELECT**.
- ◇ The flame height can be adjusted to 5 different settings.

NOTICE:

- Flame height will not be adjustable for first ten seconds when fireplace is turned on.
- The system will remember the previous flame height setting and will automatically adjust after 10 seconds.

ADJUSTING FAN SPEED

- ◇ Press the **MENU** button to activate the menu.
- ◇ Using the **UP** and **DOWN** arrows highlight the fan icon and press **SELECT**.
- ◇ Use the **UP** and **DOWN** arrows to adjust the fan speed, then press **SELECT**.
The fan speed can be adjusted to 3 different settings: high, medium and low.

NOTICE:

- The fan is controlled by a timer built into the control module.
- After the fireplace is turned on the timer will wait for 3 minutes before turning on the fan.
- In addition, the fan will remain on for 12 minutes after the fireplace has been turned off.
- The fan will start up on the high setting for 10 seconds before adjusting to the previous user setting.

ADJUSTING THERMOSTAT

- ◇ Press the **MENU** button to activate the menu.
- ◇ Using the **UP** and **DOWN** arrows highlight the **THERMO** icon and press **SELECT**.
- ◇ Use the **UP** and **DOWN** arrows to turn the **THERMO ON** or **OFF**, then press **SELECT** (the **SET TEMP** will start blinking). Using the **UP** and **DOWN** arrows, select the desired temperature and press **SELECT**.

NOTICE:

- If the **THERMO** function is **ON**, the **SET TEMP** can be adjusted at any time by pressing the **UP** and **DOWN** arrows.
- As the **ROOM TEMP (RT)** approaches **SET TEMP (ST)**, the remote system will automatically adjust the flame height. If the **RT** rises above **ST**, the fireplace will shut down the main burner. After this, the fireplace will turn back on after the **RT** drops below the **ST**.
- The system requires a two degree Fahrenheit or higher temperature difference between **RT** and **ST** for the fireplace to turn on
- The system will remember the previous **TEMPERATURE** setting when **THERMOSTAT** mode is cycled **ON** or **OFF**.





AHI TUNA



GRILLED
BRONZINI



SYCAMORE
TEMPTATION

DINING AT SYCAMORE HILLS

Reservations are recommended. Breakfast is available from the Turning Point beginning at 8:00AM during the weekdays and 7:30AM on weekends.

IN-SEASON HOURS

TURNING POINT

Monday	NOON-7:00PM
Tuesday-Friday	8:00AM-7:00PM
Saturday-Sunday	7:30AM-7:00PM

GRILL ROOM

Monday	CLOSED
Tuesday-Saturday	11:00AM-9:00PM
Sunday	11:00AM-8:00PM



CURRENT MENUS

Please click the following QR code to view our current lunch and dinner à la carte menus.



BAR PRICING

Pricing per bottle unless a special request and then based upon consumption. All alcohol must be provided by Sycamore Hills Golf Club.

HOUSE WINE	/ BOTTLE	LIQUOR	/ HALF-BOTTLE
Piattelli Cabernet Sauvignon	44	VODKA: Grey Goose	46
King Estate Pinot Noir	42	GIN: Tanqueray	26
Black Oak Chardonnay	30	RUM: Bacardi	20
Huia Sauvignon Blanc	42	TEQUILA:Codigo Blanco	42
BEER	/ BOTTLE	BOURBON: Pinhook	34
<i>Selection Varies</i>	5.00	SCOTCH: Dewar's	36

Includes mixers (soda, water, Bloody Mary mix, etc.)

Cottage snacks are complimentary. All cottage beverages are billed based on consumption, and all beverages consumed on-site must be purchased through the Club.



A man and a woman are seen from the back, looking towards a clothing store. The man is on the left, wearing a light blue shirt and dark pants. The woman is on the right, wearing a light blue top and pants. They are standing in a well-lit store with clothing racks and shelves. A white text box is overlaid on the image, containing information about nearby shopping locations.

NEARBY SHOPPING

CHESTNUT PLAZA (2.5 MILES)

10211 CHESTNUT PLAZA DRIVE, FORT WAYNE, IN 46814

Walgreens, CVS, Kroger gas station, Lassus gas station, Do It Best Hardware store and shops.

KROGER GROCERY STORE (2.5 MILES)

10230 CHESTNUT PLAZA DRIVE, FORT WAYNE, IN 46814

Large supermarket chain with deli & bakery departments, plus health & beauty aids.

JEFFERSON POINTE SHOPPING MALL (6.8 MILES)

4130 W JEFFERSON BOULEVARD, FORT WAYNE, IN 46804

Jefferson Pointe Shopping Center is an open-air lifestyle center in Fort Wayne, Indiana.

Jefferson Pointe covers the wedge of land bordered between Apple Glen Boulevard, West Jefferson Boulevard, and Illinois Road.

COVINGTON PLAZA (5.4 MILES)

6382 W JEFFERSON BOULEVARD, FORT WAYNE, IN 46804

Small unique shops, Woodhouse Day Spa, Office Depot, Goodwill, restaurants, banking, and Mike's car wash.

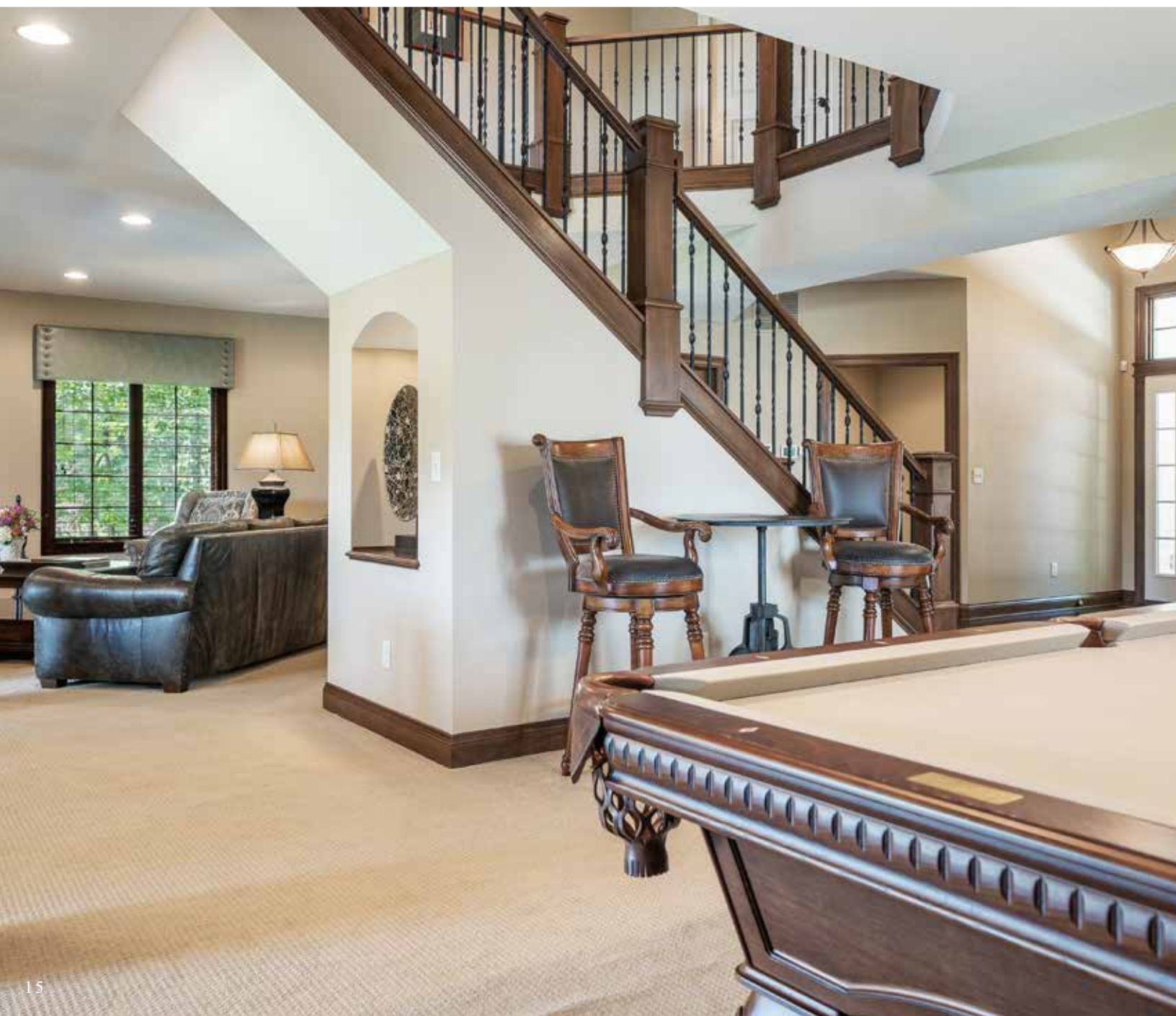
GLENBROOK SQUARE MALL (12.7 MILES)

4201 COLDWATER ROAD, FORT WAYNE, IN 46805

Fort Wayne's largest mall filled with a wide array of popular retail stores filled with today's hottest items and restaurants.



NEW
COLLECTION









MORGAN FAULL
 APPAREL MERCHANDISER
 260-625-4397
 mfaull@sycamorehillsgolfclub.com



WILLIAM "RED" RICE
 LOCKER ROOM MANAGER
 260-625-4397
 wrice@sycamorehillsgolfclub.com



SABRINA BONANNO
 ASSISTANT PROFESSIONAL
 260-625-4397
 sbonanno@sycamorehillsgolfclub.com



LAUREL PIKE
 PASTRY CHEF
 260-625-4324
 lpike@sycamorehillsgolfclub.com



TIM POWERS
 ASSISTANT PROFESSIONAL
 260-625-4397
 tpowers@sycamorehillsgolfclub.com



JESSICA SEVERIN
 SOUS CHEF
 260-625-4324
 jseverin@sycamorehillsgolfclub.com



JAY TROPF
 DIRECTOR OF OUTSIDE OPERATIONS
 260-625-4397
 jtropf@sycamorehillsgolfclub.com



DANIEL LEWIS
 SOUS CHEF
 260-625-4324
 dlewis@sycamorehillsgolfclub.com



THOMAS POPE
 LEAD ASSISTANT SUPERINTENDENT
 260-625-4551
 tpope@sycamorehillsgolfclub.com



STEVE POST
 MAINTENANCE ENGINEER
 260-616-1700
 spost@sycamorehillsgolfclub.com



RIVER WICKER
 ASSISTANT SUPERINTENDENT
 260-625-4551
 rwicker@sycamorehillsgolfclub.com



SUE MANOR
 BOOKKEEPER
 260-625-3098
 smanor@sycamorehillsgolfclub.com

GENERAL CONTACT INFO

GOLF SHOP	260-625-4397
CLUBHOUSE	260-625-4324
FOOD & BEVERAGE	260-625-4324
TURNING POINT	260-625-4486

EMERGENCY CONTACT INFO

DAYTIME:	
MARIA SANTEL, CLUBHOUSE MANAGER	260-625-4324
EVENING:	
STEVE POST, MAINTENANCE ENGINEER	260-705-2039



11836 Covington Road
Fort Wayne, Indiana 46814
sycamorehillsgolfclub.com