

04 DOOR RAIL & ARCHITECTURAL HARDWARE

Door Rails & Sidelite Rails

DLUX 4" Door Rail System	224	4" Taper Door Rail	230
DLUX 6" Door Rail System	227	4" Sidelite Rail	231



DLUX 4" Door Rail System



Finishes



*For glass fabrication details, CAD files, and the latest product information, please visit our website. Stock and finish availability may vary by product.



Key Features:

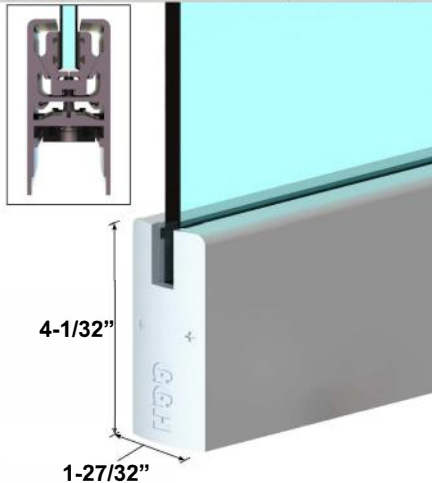
- **Durable Build:** Constructed from high-quality 6060 T6 Aluminum for superior strength and corrosion resistance.
- **Efficient Installation:** Designed for quick and easy installation with no expensive tools required, ensuring time and cost savings.
- **Locking Mechanism:** Includes a built-in locking mechanism, offering enhanced security for glass doors.
- **Compact Dimensions:** 35-3/4" length for compatibility with standard installations.
- **Endcap (Included):** The specially designed endcap [DLUX4DEND], included in all finishes as of Base Shoe is used to securely attach at the ends for a clean and finished look

Cylinder Lock Accessory Options (Sold Separately):

- **Keyed Lock Cylinder [DLUXCYLK]:** Provides secure locking with a traditional key for enhanced security in high-traffic areas.
- **Thumb turn Cylinder [DLUXCYLT]:** Offers easy access with a thumb-turn mechanism, ideal for interior doors and low-traffic applications.
- **Dummy Cylinder [DLUXCYLD]:** A non-functional cylinder designed for aesthetic purposes, used when a locking mechanism is not required.

Kit Includes

- 1 X DLUX4D35 or 37 or 48
- 2 X DLUX4DEND
- 1 X DLUX4DPSB



DLUX4D35, 37, 48

DLUX 4" Door Rail - Without Lock

Kit Includes

- 1 X DLUX4D35 or 37 or 48
- 2 X DLUX4DEND
- 1 X DLUX4DPSB
- 1 X DLUXCYLMT



Sold Separate

- DLUXCYLK
- DLUXCYLT
- DLUXCYLD

DLUX4D35L, 37L, 48L

DLUX 4" Door Rail - With Lock

Without Lock - Dimension		SKU	With Lock - Dimension		SKU
35-3/4"		DLUX4D35	35-3/4"		DLUX4D35L
37-3/4"		DLUX4D37	37-3/4"		DLUX4D37L
48"		DLUX4D48	48"		DLUX4D48L

DLUX 4" Door Rail – Accessories



Finishes



Custom
Fabrication
Available

Included in Kit



DLUX4DEND
Door Rail Endcap

Included in Kit



DLUXCYLMT
Door Rail Lock

Included in Kit



DLUX4DPSB
Door Rail System - Pivot Slide Block

Sold Separate



DLUX4HWRENCH
3/16" Hex Wrench

Sold Separate



DLUXCYLK
Key Lock Cylinder

Sold Separate



DLUXCYLT
Thumbturn Lock Cylinder

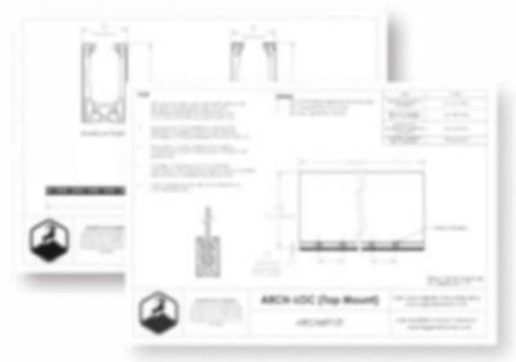
Sold Separate



DLUXCYLD
Dummy Cylinder



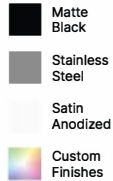
Note: Visit ggshardware.com
For Glass Fabrication & Product Information.



DLUX 4" Sidelite Rail System



Finishes

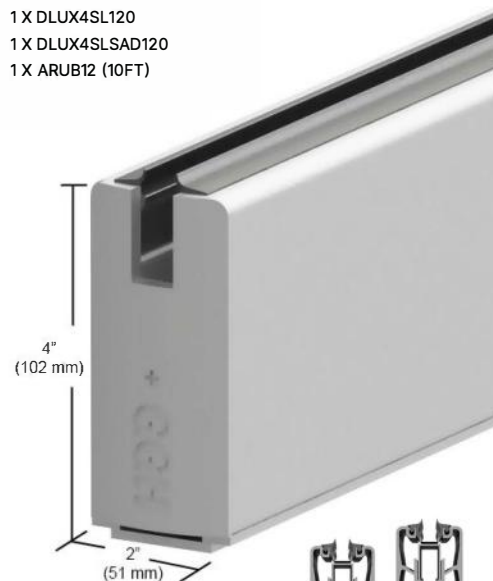


Specification

- **Compatible with:** The 4" Architectural Door Rail System for seamless storefront installations.
- **Length:** 120" (10ft) & 240" (20ft)
- **Clearance Options:** Includes a reversible saddle for 1/4" or 3/4" clearance
- **Roll-In Gasket:** Includes roll-in gasket for 1/2" or 3/8" glass
- For glass fabrication details, CAD files, and the latest product information, please visit our website.
- Stock and finish availability may vary by product.

Kit Includes

1 X DLUX4SL120
1 X DLUX4SLSAD120
1 X ARUB12 (10FT)

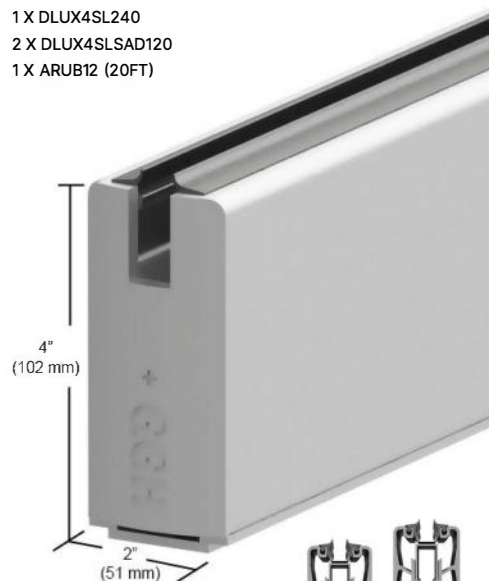


DLUX4SL120

DLUX 4" Sidelite Rail -
120" (10ft) Length

Kit Includes

1 X DLUX4SL240
2 X DLUX4SLSAD120
1 X ARUB12 (20FT)



DLUX4SL240

DLUX 4" Sidelite Rail -
240" (20ft) Length



Included in Kit

1/2"(12mm) Glass



ARUB12

Architectural Roll-In Gasket for 1/2" (12mm) Glass

3/8"(10mm) Glass



ARUB10

Architectural Roll-In Gasket for 3/8" (10mm) Glass

Sold Separate



DLUX4SLEND

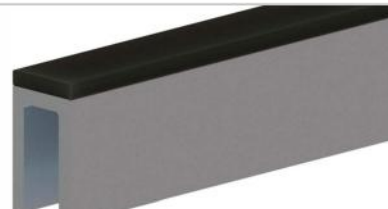
Endcap for DLUX 4" Sidelite Rail

Included in Kit



DLUX4SLSAD120

Additional Saddle for DLUX 4" Sidelite Rail
10' & 20' Length



AUSB4

Architectural Neoprene Setting Block - 4" Length

DLUX 6" Door Rail System



Finishes



*For glass fabrication details, CAD files, and the latest product information, please visit our website. Stock and finish availability may vary by product.



Key Features:

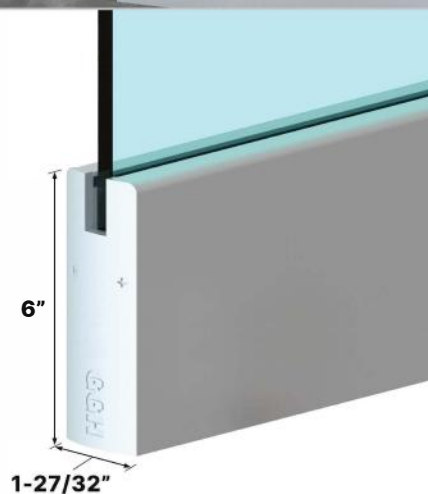
- **Durable Build:** Constructed from high-quality 6060 T6 Aluminum for superior strength and corrosion resistance.
- **Efficient Installation:** Designed for quick and easy installation with no expensive tools required, ensuring time and cost savings.
- **Locking Mechanism:** Includes a built-in locking mechanism, offering enhanced security for glass doors.
- **Compact Dimensions:** 35-3/4" length for compatibility with standard installations.
- **Endcap (Sold Separately):** The specially designed endcap [DLUX4DEND], available in all finishes as of Base Shoe is used to securely attach at the ends for a clean and finished look

Cylinder Lock Accessory Options (Sold Separately):

- **Keyed Lock Cylinder [DLUXCYLK]:** Provides secure locking with a traditional key for enhanced security in high-traffic areas.
- **Thumb turn Cylinder [DLUXCYLT]:** Offers easy access with a thumb-turn mechanism, ideal for interior doors and low-traffic applications.
- **Dummy Cylinder [DLUXCYLD]:** A non-functional cylinder designed for aesthetic purposes, used when a locking mechanism is not required.

Kit Includes

- 1 X DLUX6D35 or 37 or 48
- 2 X DLUX6DEND
- 1 X DLUX6DPSB



DLUX6D35

DLUX 6" Door Rail - Without Lock

Kit Includes

- 1 X DLUX6D35 or 37 or 48
- 2 X DLUX6DEND
- 1 X DLUX6DPSB
- 1 X DLUXCYLMT

Sold Separate

- DLUXCYLK
- DLUXCYLT
- DLUXCYLD



DLUX6D48L

DLUX 6" Door Rail - With Lock

Without Lock - Dimension		SKU	With Lock - Dimension		SKU
35-3/4"		DLUX6D35	35-3/4"		DLUX6D35L
37-3/4"		DLUX6D37	37-3/4"		DLUX6D37L
48"		DLUX6D48	48"		DLUX6D48L

DLUX 6" Door Rail Lock Accessories



Finishes



Included in Kit



DLUX4DEND
Door Rail Endcap

Included in Kit



DLUXCYLMT
Door Rail Lock

Included in Kit



DLUX4DPSB
Door Rail System - Pivot Slide Block

Sold Separate



DLUXCYLK
Key Lock Cylinder

Sold Separate



DLUXCYLT
Thumbturn Cylinder

Sold Separate



DLUXCYLD
Dummy Cylinder

Sold Separate



DLUX4HWRENCH
3/16" Hex Wrench

Sold Separate



DLUX4HTDF
Standard Top Door Rail Pivot Arm

Sold Separate



PPIV401-2H
Top Free Swing Pivot - 2 Holes

Short Arm / Long Arm

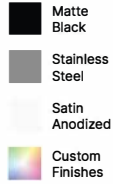


DLUX4HARMS
DLUX4HARML
Concealed Closer Arm

DLUX 6" Sidelite Rail System



Finishes

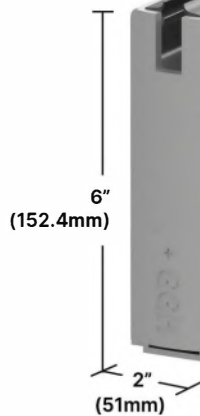


Specification

- **Compatible with:** The 6" Architectural Door Rail System for seamless storefront installations.
- **Length:** 120" (10ft)
- **Clearance Options:** Includes a reversible saddle for 1/4" or 3/4" clearance
- **Roll-In Gasket:** Includes roll-in gasket for 1/2" & 3/8" glass

Kit Includes

- 1 X DLUX6SL120
- 1 X DLUX6SLSAD120
- 1 X ARUB12 (10FT)



DLUX6SL120

DLUX 6" Sidelite Rail - 120" (10ft) Length



1/2" (12mm) Glass

Included in Kit



ARUB12

Architectural Roll-In Gasket for 1/2" (12mm) Glass

3/8" (10mm) Glass



ARUB10

Architectural Roll-In Gasket for 3/8" (10mm) Glass

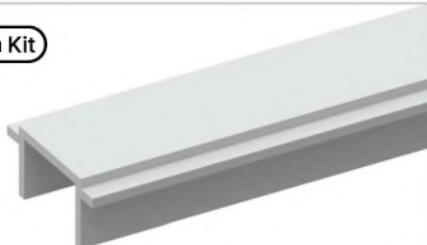
Sold Separate



DLUX6SLEND

Endcap for DLUX 6" Sidelite Rail

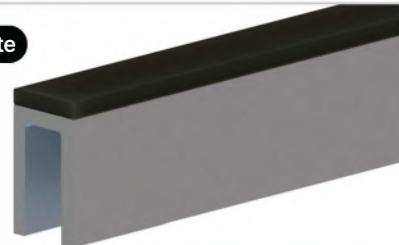
Included in Kit



DLUX4SLSAD120

Additional Saddle for DLUX 4" Sidelite Rail - 10' & 20' Length

Sold Separate



AUSB4

Architectural Neoprene Setting Block - 4" Length

4" Taper Door Rail



Finishes

Clear Anodized

Matte Black

- **Durable Build:** Constructed from high-quality 6060 T6 Aluminum for superior strength and corrosion resistance.
- **Efficient Installation:** Designed for quick installation with no expensive tools required, ensuring time and cost savings.
- **Locking Mechanism:** Includes a built-in locking mechanism, offering enhanced security for glass doors.

Kit Includes

1 X DLUX4T35 or 37 or 48
2 X DLUX4TEND
1 X DLUX4DPSB
1 X DLUXCYLMT

Sold Separate

DLUXCYLK
DLUXCYLT
DLUXCYLD



Matching Finishes Available

Kit Includes

1 X DLUX4T35 or 37 or 48
2 X DLUX4TEND
1 X DLUX4DPSB



DLUX4T35L, 37L & 48L

Door rail taper 4" with lock



DLUX4T35, 37 & 48

Door rail taper 4" without lock



Sold Separate



DLUX4TEND

Taper Door Rail Endcap

1/2" (12mm) Glass



ARUB12

Architectural Roll-In Gasket for 1/2" (12mm) Glass



3/8" (10mm) Glass



ARUB10

Architectural Roll-In Gasket for 3/8" (10mm) Glass



Included in Kit



DLUX4SLSAD120

Additional Saddle for DLUX 4" Sidelite Rail - 10' & 20' Length

Sold Separate



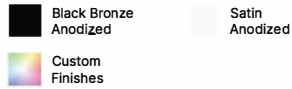
AUSB4

Architectural Neoprene Setting Block - 4" Length

4" Sidelite Rail



Finishes



Specification

- **Compatible with:** The 4" Taper Architectural Door Rail System for seamless storefront installations.
- **Length:** 120" (10ft) & 240" (20ft)
- **Clearance Options:** Includes a reversible saddle for 1/4" or 3/4" clearance
- **Roll-In Gasket:** Includes roll-in gasket for 1/2" (12mm) or 3/8" (10mm) glass

Kit Includes

1 X DLUX4TSL120
1 X DLUX4SLSAD120
1 X ARUB12 (10FT)

Kit Includes

1 X DLUX4TSL240
2 X DLUX4SLSAD120
1 X ARUB12 (20FT)



DLUX4TSL120
DLUX4TSL240

4" Taper Sidelite - 120" (10ft) or 240" (20ft) Length



Sold Separate



DLUX4TEND

Taper Door Rail Endcap

1/2"(12mm) Glass



ARUB12

Architectural Roll-In Gasket for 1/2" (12mm) Glass



Included in Kit



DLUX4SLSAD120

Additional Saddle for DLUX 4" Sidelite Rail - 10' & 20' Length

3/8"(10mm) Glass



ARUB10

Architectural Roll-In Gasket for 3/8" (10mm) Glass



Sold Separate



AUSB4

Architectural Neoprene Setting Block - 4" Length

P13 Frameless Shower Door
P85 Railing Hardware

P163 Storefront & Entrance System
P223 Door Rails & Architectural Hardware

P261 Stock Glass Doors
P271 Glazing Supplies

03 Storefront & Entrances Hardware



04 DOOR RAIL & ARCHITECTURAL HARDWARE

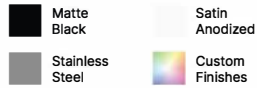
DLUX 1-3/4" X 4" Header System



DLUX 1-3/4" X 4" Header System



Finishes

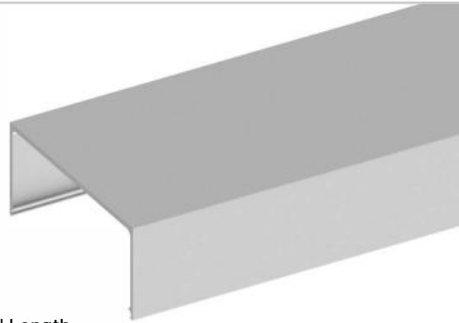


Specification

- **Standard Length:** Components available in 120" (10 FT) & 240" (20 FT) stock length for convenient purchasing.
- **Custom Fabrication:** Customizable 4" Architectural Door Header Systems tailored to your specifications.
- **Pre-Fabricated Options:** Ready-to-install single and double-door header systems for faster project completion.

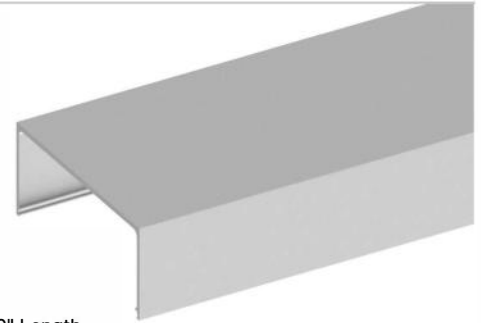
DLUX4H120

DLUX 1-3/4 X 4" Header - 120" Length



DLUX4H240

DLUX 1-3/4 X 4" Header - 240" Length



DLUX4HPP120

DLUX 1-3/4 X 4" Header System - Pocket Plate - 120" Length



DLUX4HCP

DLUX 1-3/4 X 4" Header System - Closer Cover Plate - 14" Length



DLUX4HFP120

DLUX 1-3/4 X 4" Header System - Flat Plate - 120" Length



Header With Flat Plate

Header With Pocket Plate

Header With Flat Plate +
Concealed Closer Plate



Custom Header
Fabrication
Available



DLUX 1-3/4" X 4" Header System



Finishes



Specification

- **Ease of Installation:** Quick and hassle-free setup saves time and money; no expensive tools are required.
- **Complete Kit:** Includes mounting clips, screws, and detailed instructions for a seamless assembly experience.
- **Material:** Made from durable solid brass for long-lasting performance.

HO/NHO Complete With All Fasteners



ASSA ABLOY

DLUX4HDC90HOEXT

Concealed Overhead Header Door Closer Extended

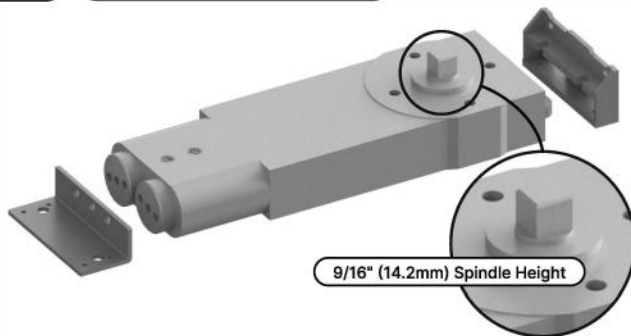
Heavy Duty



DLUX4HDC90NHOEXTHD

ROCKWOOD 304 Heavy-Duty Overhead Concealed Door Closer

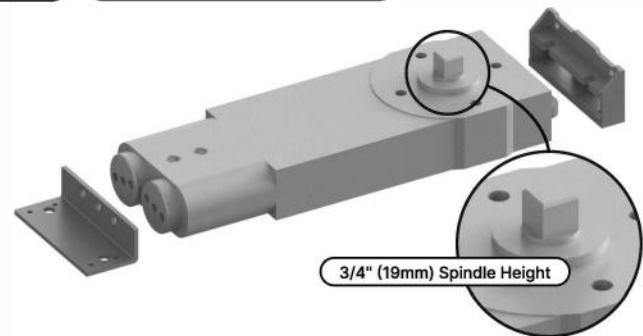
HO/NHO Complete With All Fasteners



DLUX4HDC90

Concealed Overhead Header Door Closer / Custom header fabrication Available

HO/NHO Complete With All Fasteners



DLUX4HDC9034

Concealed Overhead Header Door Closer / Custom header fabrication Available



DSTOP2

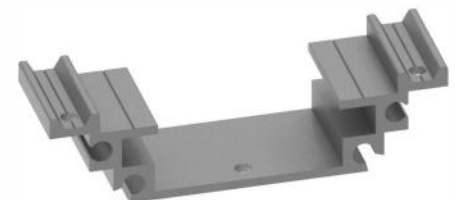
Door Rail System - Single Door Stop



DSTOP6

Door Rail System - Single Door Stop

Complete With All Fasteners



DLUX4WMB

DLUX Header System - Wall Mount Bracket

DLUX 1-3/4" X 4" Header System



Finishes



Specification

- Quick and easy installation
- Available in Short & Long Size
- No expensive tools required
- Designed to work with concealed closers
- Compatible with 4" Architectural Header System and Sidelite Rail System

Short Arm/Long Arm



DLUX4HARM

Concealed Closers Arm (Short Arm & Long Arm)



DLUX4H609ARM

ROCKWOOD Overhead Closer Arm (OHC-609-ARM)



DLUX4DP

Door Rail System - Pivot Slide Block

Heavy Duty



DLUXPIVHD

DLUX End Load Bottom Pivot



2SIDETAPE

Double-Sided Tape (1" x 175ft Long)



DLUXPIVWB

DLUX Door Rail Top Pivot - Walking Beam Pivot



DLUX4HTDF

Standard Top Door Rail Pivot Arm



DLUXPIVDP

Dual Purpose Pivot Kit



DLUXPIVADJ1434

Adjustable Bottom Pivot - 1/4"-3/4"

Smoke Baffle

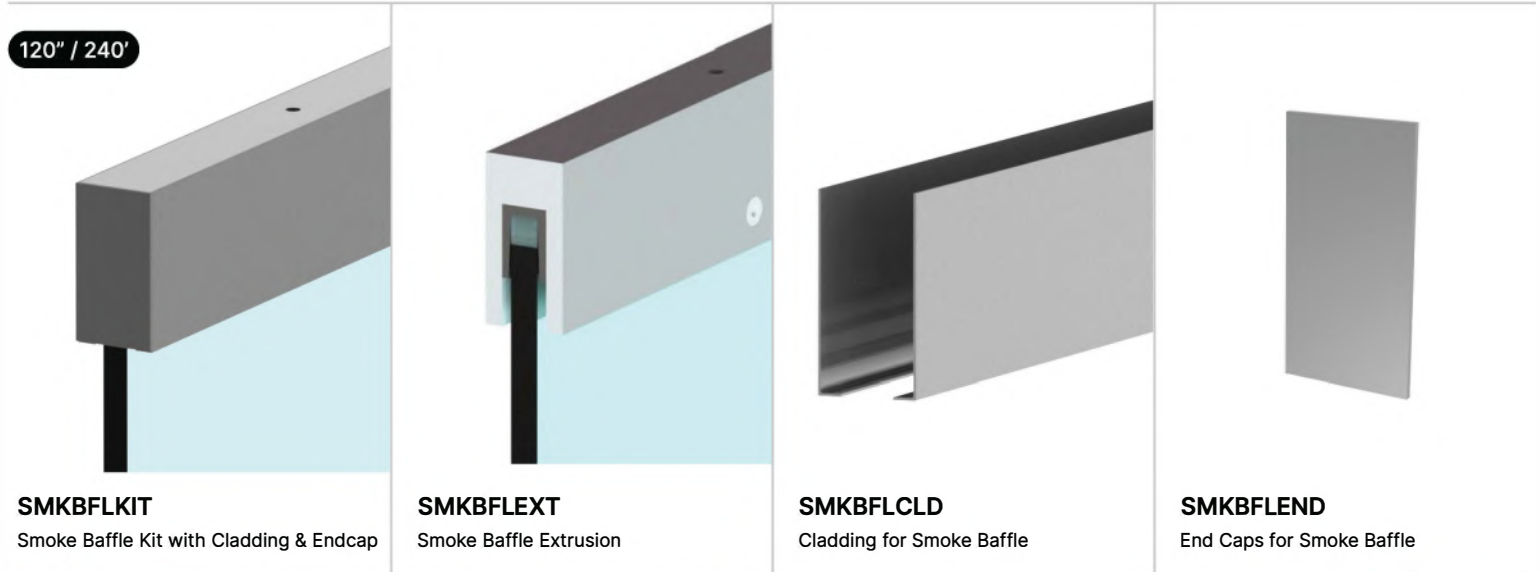


Finishes



Specification:

- **Durable Build:** Constructed from high-quality 6060 T6 Aluminum for superior strength and corrosion resistance.
- Endcap sold separately.



Partition Sliding System



Format Sliding Door Entrance System

- The Format Sliding Door Entrance System offers a modern, durable solution for creating expansive glass entrances in both commercial and residential settings.
- Equipped with 4" tapered Series door rails on both top and bottom.
- Utilizes the Glass Securing System for reliable glass retention.
- Available in seven architectural finishes to complement various design themes.
- Bottom-rolling system ensures smooth operation and durability.
- Suitable for various commercial and residential entrance applications.

Door Configurations:

- X: Single sliding panel.
- XX: Two sliding panels on a single or double track.
- XO / OX: One sliding panel paired with a fixed panel.
- XOX: Sliding panels on both ends with a fixed center panel.
- OXO: Fixed panels on both ends with a central sliding panel.
- OXXO: Two central sliding panels flanked by fixed panels on each side.
- XXXX: Four-panel system with multiple sliding and fixed panel combinations.





03 STOREFRONT & ENTRANCES HARDWARE

Continuous Gear Hinge



Continuous Gear Hinge



Finishes



For glass fabrication details, CAD files, and the latest product information, please visit our website. Stock and finish availability may vary by product.

Specification

- **Durable Construction:** Supports doors up to 200 lbs for long-lasting strength and performance.
- **Full-Length Hinge Design:** Applied along the entire door length to balance and distribute weight evenly.
- **Seamless Aesthetic:** The hinge is mounted to the frame rabbet and door edge, concealing both leaves.
- **Installation-Ready:** Includes all necessary fasteners for quick and straightforward installation.
- **Maximum allowed swing:** 80°

83" / 96" / 120" Long



GH1083

Continuous Gear Hinge - 10 Series

83" / 96" / 120" Long



GH2083

Continuous Gear Hinge - 20 Series

83" / 96" / 120" Long



GH3083

Continuous Gear Hinge - 30 Series

83" / 96" / 120" Long



GH4083

Continuous Gear Hinge - 40 Series



04 DOOR RAIL & ARCHITECTURAL HARDWARE

Exposed Door Closer



Exposed Door Closer

INSTALLER'S
FAVORITE!
GOAT Drill & Spade Bits,
Refer Page Number: 272



Finishes



Key Features

- **Regular Arm Configuration:** Smooth, consistent closing for standard setups.
- **Back Check Function:** Prevents forceful opening to protect door and walls.
- **Non Hold Open Mechanism:** Auto-closes door for security and efficiency.

Non Hold Open Include Back Check Feature

- **Max Door Width:** 950mm (37-3/16")
- **Max Door Weight:** 65 kg (143lbs)



EDC016

Exposed Door Closer - Size 3 - Non Hold Open

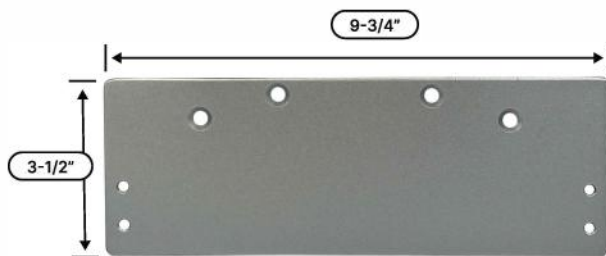
Non Hold Open Include Back Check Feature

- **Max Door Width:** 1100mm (43-1/4")
- **Max Door Weight:** 80 kg (176lbs)



EDC017

Exposed Door Closer - Size 4 - Non Hold Open



DP017

Exposed Door Closer - Drop Plate



04 DOOR RAIL & ARCHITECTURAL HARDWARE

Rim Panic Device

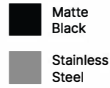


Rim Panic Device

For glass fabrication details, CAD files, and the latest product information, please visit our website.
Stock and finish availability may vary by product.

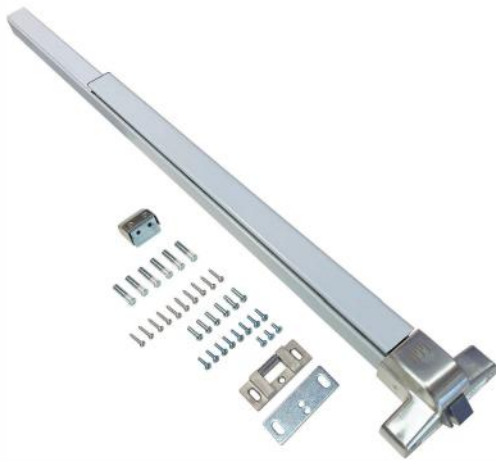


Finishes



Specification

- **Stainless Steel Finish:** Provides a sleek, durable, and corrosion-resistant surface.
- **Door Compatibility:** Suitable for use with aluminum narrow style, wood, or hollow metal doors.
- **Installation Fasteners Included:** Comes complete with all necessary fasteners for easy installation.
- **Latch Mechanism:** Ensures quick, secure exit with minimal force.



RPD003SS

Rim Panic Device - Stainless Steel



RPLT012SS

Rim Panic Lever Trim - Stainless Steel

Commercial Ladder Pulls

12" Overall

12" CTC



OSTUB12

12" Offset Tubular Commercial Pull Handle

Specification

- **Material:** Premium SS304 stainless steel for superior durability
- **Tubular Diameter:** 1" (25.4mm) for a modern and comfortable grip
- **Suitable for Glass Thickness:** 3/8" - 3/4" (10mm - 19mm) tempered glass
- **Suitable for Wood/Aluminum Door Thickness:** Up to 1-3/4" (44mm)
- **Simple Installation:** Prepped for back-to-back mounting with included fasteners
- **Environment:** Perfect fit for Double Aluminum Door opening with two offset handle side by side for comfortable opening

Finishes



04 DOOR RAIL & ARCHITECTURAL HARDWARE

Architectural U-Channels



Architectural U-Channels



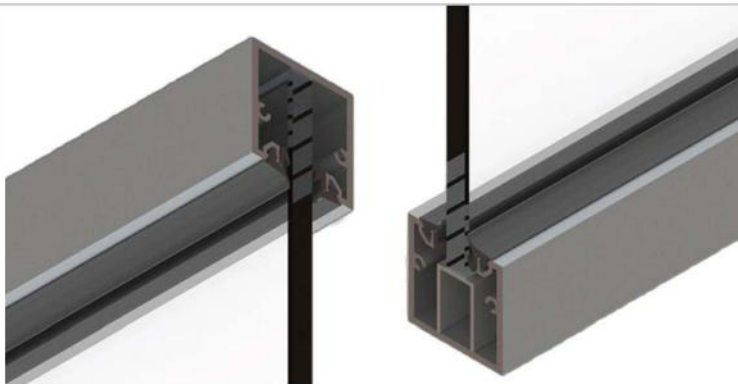
Finishes



For glass fabrication details, CAD files, and the latest product information, please visit our website. Stock and finish availability may vary by product.

Specification

- **Compatible with:** The 4" Architectural Door Rail System for seamless storefront installations.
- **Length:** 240" (20ft)
- **Clearance Options:** Includes a reversible saddle for 1/4" or 3/4" clearance
- **Roll-In Gasket:** Includes roll-in gasket for 1/2" glass



AU120 & AU240

Architectural U-Channels with Roll-In Gaskets - 120" & 240" Length



1/2"(12mm) & 3/8"(10mm) Glass



ARUB12 & ARUB10

Architectural Roll-In Gasket for 1/2" (12mm) & 3/8" (10mm) Glass



ROLLER01 *

Vinyl Roller Tool



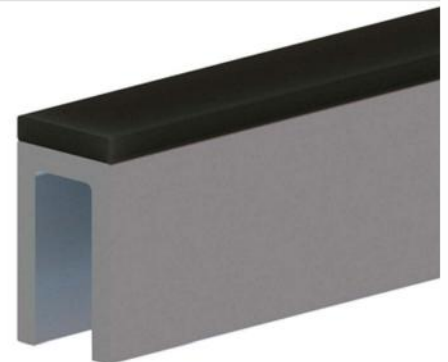
AUEND

Endcaps for Architectural U-Channels



2SIDETAPE

Double-Sided Tape (1" X 175ft Long)

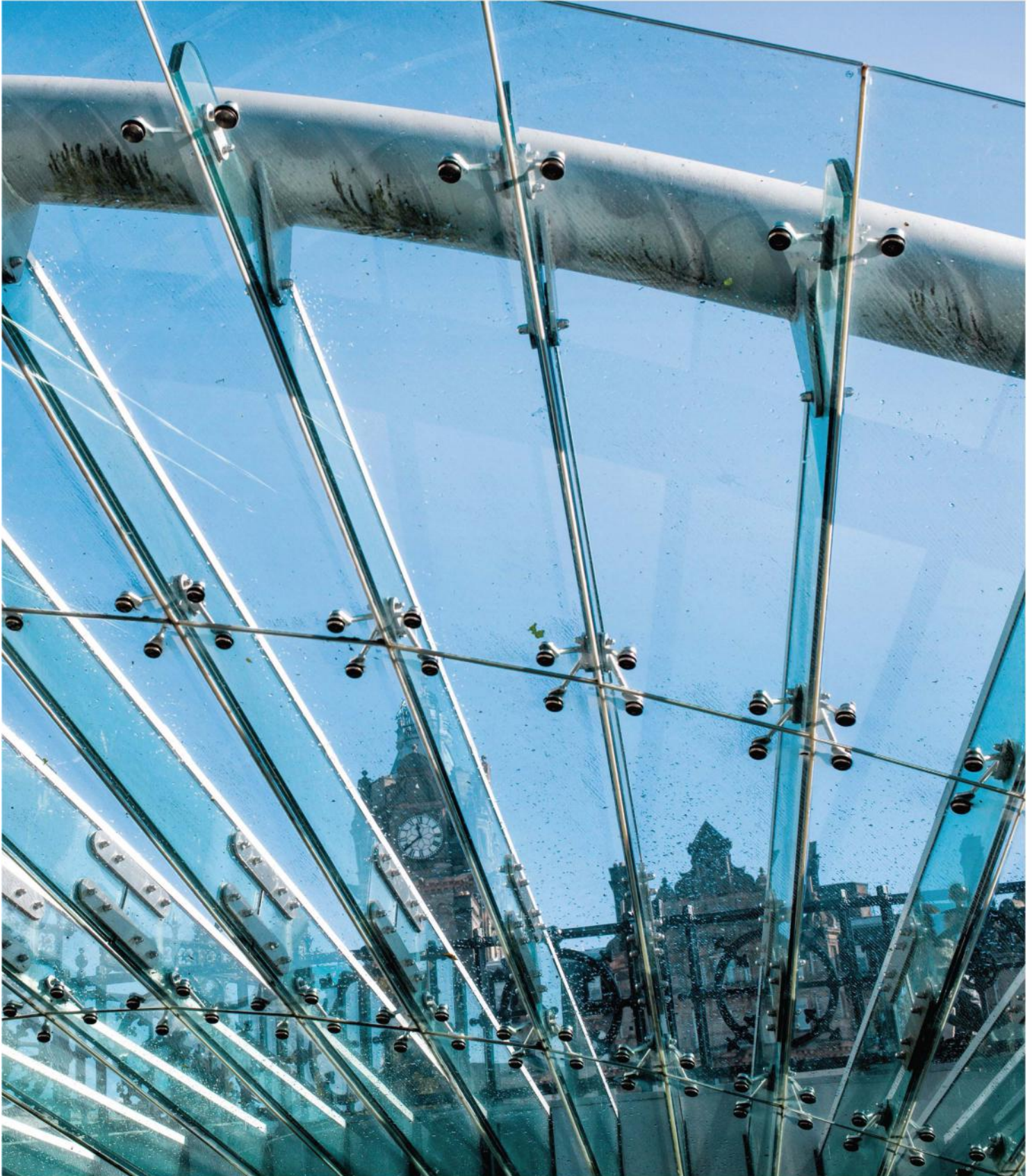


AUSB4

Architectural Neoprene Setting Block - 4" Length

04 DOOR RAIL & ARCHITECTURAL HARDWARE

Commercial Spider Fittings



Commercial Spider Fittings – SPY Series



For glass fabrication details, CAD files, and the latest product information, please visit our website. Stock and finish availability may vary by product.








Finishes



Specification

- **Versatile Applications:** Ideal for commercial building facades, glass canopies, and interior partition walls.
- **High Load Capacity:** Designed to hold large glass panels securely, maintaining structural integrity and aesthetic appeal.
- **Durable Finish:** Available in brushed or polished stainless steel to suit different environment needs and withstand the elements.
- **Engineered data Available**

[Engineered Data Sheet Available!](#)

 <p>SPYFM4 Fin Mount Spider Fittings Quad Arm</p>	 <p>SPYFM2V Fin Mount Spider Fittings Double Arm V-Shape</p>	 <p>SPYFM2Y Fin Mount Spider Fittings Double Arm Y-Shape</p>	 <p>SPYFM1R Fin Mount Spider Fittings Single Arm Right</p>	 <p>SPYFM1L Fin Mount Spider Fittings Single Arm Left</p>
 <p>SPYFM2 Fin Mount Spider Fittings Double Arm</p>	 <p>SPYFM1 Fin Mount Spider Fittings Single Arm</p>	 <p>SPYPM4 Post Mount Spider Fittings Quad Arm</p>	 <p>SPYPM4C Post Mount Spider Fittings Quad Arm Corner</p>	



Commercial Spider Fittings – SPY Series

For glass fabrication details, CAD files, and the latest product information, please visit our website. Stock and finish availability may vary by product.










Finishes



Specification

- **Versatile Applications:** Ideal for commercial building facades, glass canopies, and interior partition walls.
- **High Load Capacity:** Designed to hold large glass panels securely, maintaining structural integrity and aesthetic appeal.
- **Durable Finish:** Available in brushed or polished stainless steel to suit different environment needs and withstand the elements.

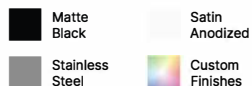
 <p>SPYPM3 Post Mount Spider Fittings Triple Arm</p>	 <p>SPYPM2V Post Mount Spider Fittings Double Arm V-Shape</p>	 <p>SPYPM2 Post Mount Spider Fittings Double Arm</p>	
 <p>SPYPM2C Post Mount Spider Fittings Double Arm Corner</p>	 <p>SPYPM1 Post Mount Spider Fittings Single Arm</p>	 <p>SPYPM1R Post Mount Spider Fittings Single Arm Left or Right</p>	

SPY Series Fasteners – SPY Series

For glass fabrication details, CAD files, and the latest product information, please visit our website. Stock and finish availability may vary by product.



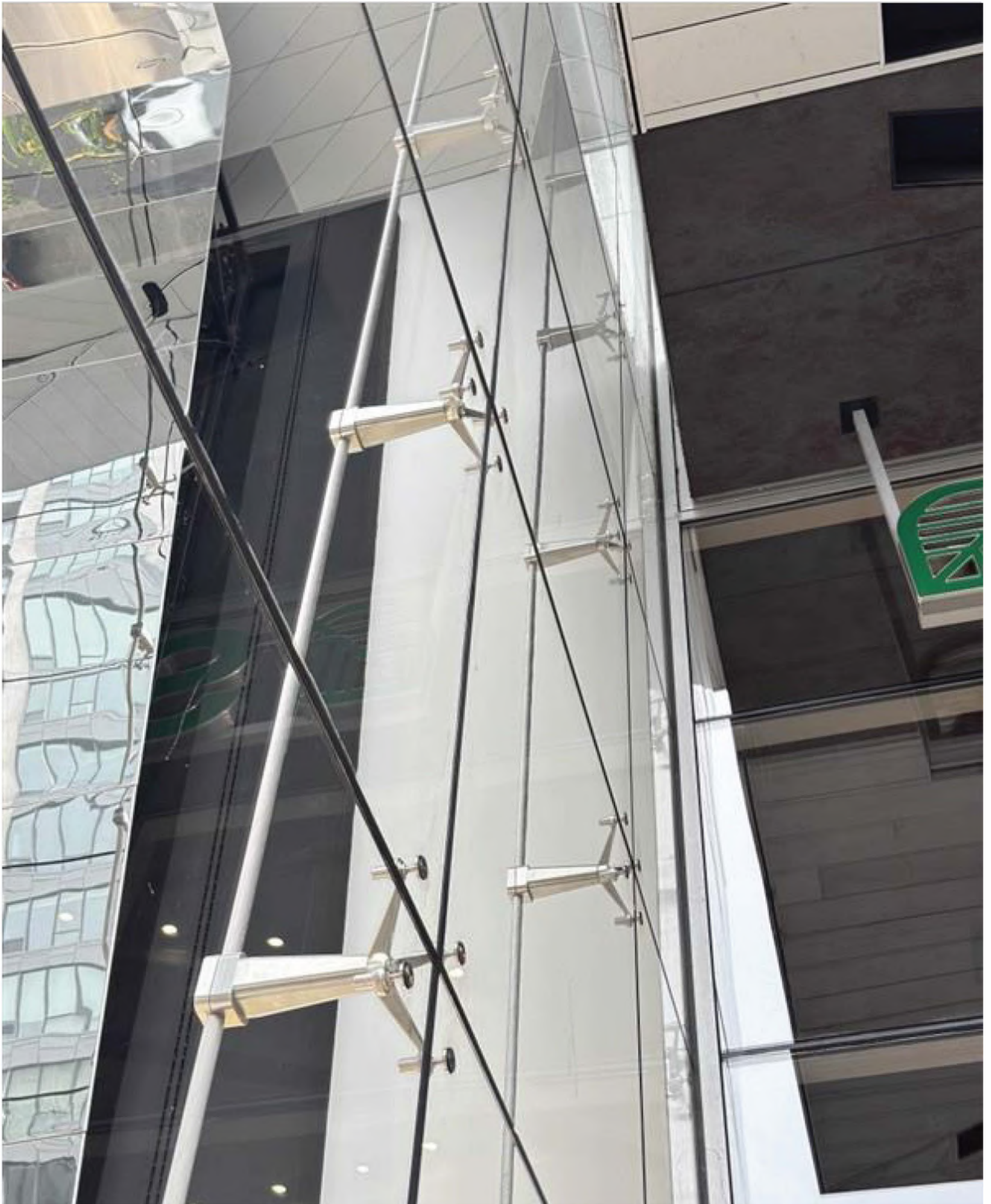
Finishes



Specification

- **High-Quality Material:** Made from 316 Alloy Stainless Steel for superior strength and weather resistance.
- **Fastening Mechanism:** Interior/exterior fixed or swivel mount that can tilt 6° for even stress distribution.
- **Suitable Glass Thickness:** 5/16" to 7/8" (8mm to 23mm)

	(5/16" to 19/32")	5/16" to 11/16"	11/16" to 1-1/32"	5/8" to 7/8"
 <p>SPYFARIG818 Rigid For 8mm to 18mm Glass</p>	 <p>SPYFASWEXT1523 Exterior Swivel For 8mm to 15mm Glass</p>	 <p>SPYFASW1826 Interior Swivel For 8mm to 18mm Glass</p>	 <p>SPYFASWEXT815 Interior Swivel For 18mm to 26mm Glass</p>	 <p>SPYFASW818 Exterior Swivel For 15mm to 23mm Glass</p>



04 DOOR RAIL & ARCHITECTURAL HARDWARE

Glass Canopy Brackets





Double Arm Connector

Finishes



- **Premium Material:** Made from high-quality stainless steel for strength and long-lasting durability.
- **Removable Round Adapter:** Allows easy customization for round or flat posts for versatile installation.

Adjustable



PROARMADJ

Double Arm Glass Connector - Adjustable

Fixed



PROARM

Double Arm Glass Connector - Fixed

Canopy Bracket

Finishes



*Custom configuration and size available based upon request products@ggshardware.com



Custom
Fabrication
Available

24"



GC2401

Glass Canopy Bracket (24" Height)

36"



GC3601

Glass Canopy Bracket (36" Height)



Ask us about
FACTORY DIRECT PROGRAM

04 DOOR RAIL & ARCHITECTURAL HARDWARE

Windows Hardware



Window Hardware

- **Durable Aluminum Frame:** Can be cut to fit various height openings.
- **Pre-Assembled Components:** Includes pre-installed rollers and corners for easy setup.
- **Secure & Functional:** Comes with locking handle and bug strip for added protection.



SDK20
Heavy-Duty Extruded Sliding Screen Door Kit



CGNCR
Nylon Combination Roller



SSLATCH
Sliding Screen Latch & Pull with Screw Holes



CFSM36100
Charcoal Fiberglass Screen Mesh
36" Width - 100' Roll



SRS125500
Screen Retainer Spline - 0.125" Ø - 500' Length



FCSS120500
Foam Core Screen Spline - 0.12" Ø - 500' Length



DO-IT-YOURSELF
Sliding Screen
Door Kit

04 DOOR RAIL & ARCHITECTURAL HARDWARE

Drive Thru Windows & Speak Thru



Drive Thru Windows & Speak Thru Series

For glass fabrication details, CAD files, and the latest product information, please visit our website. Stock and finish availability may vary by product.

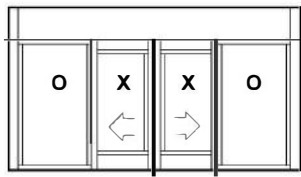


Finishes

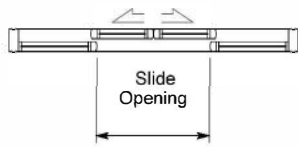


Specification

- **Opening Operation:** Auto/manual bi-parting or single-side options to suit any need.
- **Glass:** 1" (25 mm) clear tempered glass and 1/4" (6 mm) prep.
- **Design:** Thin stile panels for a contemporary, clean appearance.
- **Counter & Apron:** Stainless steel counter and metal apron for durability.
- **Electrical:** Requires 120VAC, 60 cycle, single-phase, 15-amp service; average current draw is under 2 amps. Up to 5 units may be connected to 1 circuit.



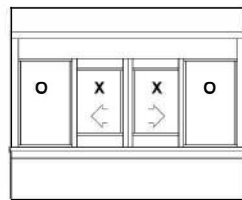
Exterior Elevation



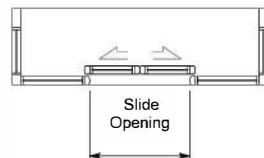
Floor Plan

DTW8100TS

Drive-Thru Window - Automatic Biparting - 8100TS Flush Mount



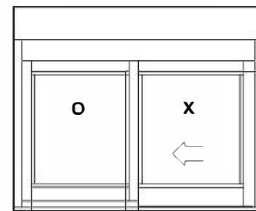
Exterior Elevation



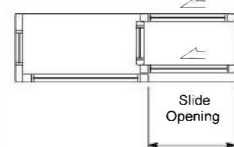
Floor Plan

DTW8200TS

Drive-Thru Window - Automatic Biparting - 8200TS Projected



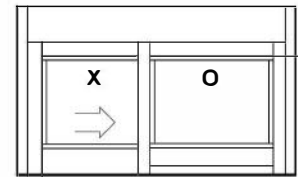
Exterior Elevation



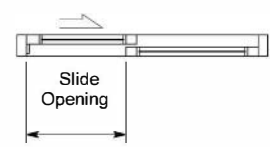
Floor Plan

DTW8300

Drive-Thru Window - Security Single Slide - 8300 Projected



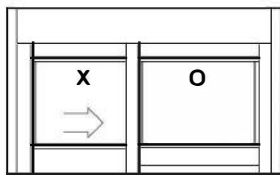
Exterior Elevation



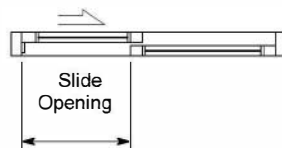
Floor Plan

DTW8100

Drive-Thru Window - Automatic Single Slide - 8100 Flush Mount



Exterior Elevation



Floor Plan

DTW8900

Drive-Thru Window - Manual Single Slide - 8900 Flush Mount



Brushed Stainless



ST5

Speak Thru

Specification

- **Minimal Framing:** Provides a sleek design with minimal support for a contemporary glass canopy.
- **24" Protrusion:** Ample coverage for various applications, offering protection while maintaining an open feel.
- **Durable Construction:** Crafted from high-quality 316 Stainless Steel for strength, corrosion resistance, and long-lasting durability.
- **Glass Compatibility:** Designed for 1/2" thick glass with a 3/4" diameter hole for easy installation.

Partition System

This product is currently in development. The image shown may differ from the final product. For the latest specifications and availability, please refer to our website.

Door Configurations:

- **Minimalist Design:** Slim-profile frames provide a clean, contemporary look that complements various interior styles.
- **Maximized Transparency:** Large glass panels allow for abundant natural light, creating open and airy environments.
- **Efficient Installation:** System-specific accessories and snap-on covers facilitate quick and straightforward assembly.
- **Customization Finishes:** Available in a range of finishes to match your design preferences and project requirements.
- **Versatile Applications:** Ideal for offices, meeting rooms, and other interior spaces where both openness and separation are desired.

Format Sliding Door Entrance System

Enhance your interior spaces with our sleek and modern Glass Partition System, designed to offer both functionality and aesthetic appeal.



ADA Compliant Hardware



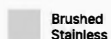
ADAMIRROR

ADA-Compliance Mirror

Key Features

- **Surface Options:** Electroplated Brass, Brushed Silver
- **Mirror Type:** 5mm Copper-Free Silver Mirror with Explosion-Proof Film
- **Size Options:** 610 × 862 mm, 610 × 915 mm, 711 × 1016 mm, or Custom Sizes
- **Frame:** Constructed from 304 Stainless Steel for enhanced durability
- **Frame Front Width:** 10 mm
- **Backing:** Explosion-Proof Film for added safety
- **Weld Point:** Invisible weld point for a sleek and smooth appearance
- **Hanging:** Double Fixed Metal Hooks for easy installation

Finishes



Brushed
Stainless



Custom
Finishes



