

100
1925 • 2025

VHA Home HealthCare
Creating More Independence for Over 100 Years

Research & Innovation Annual Report 2025

Leading with Science

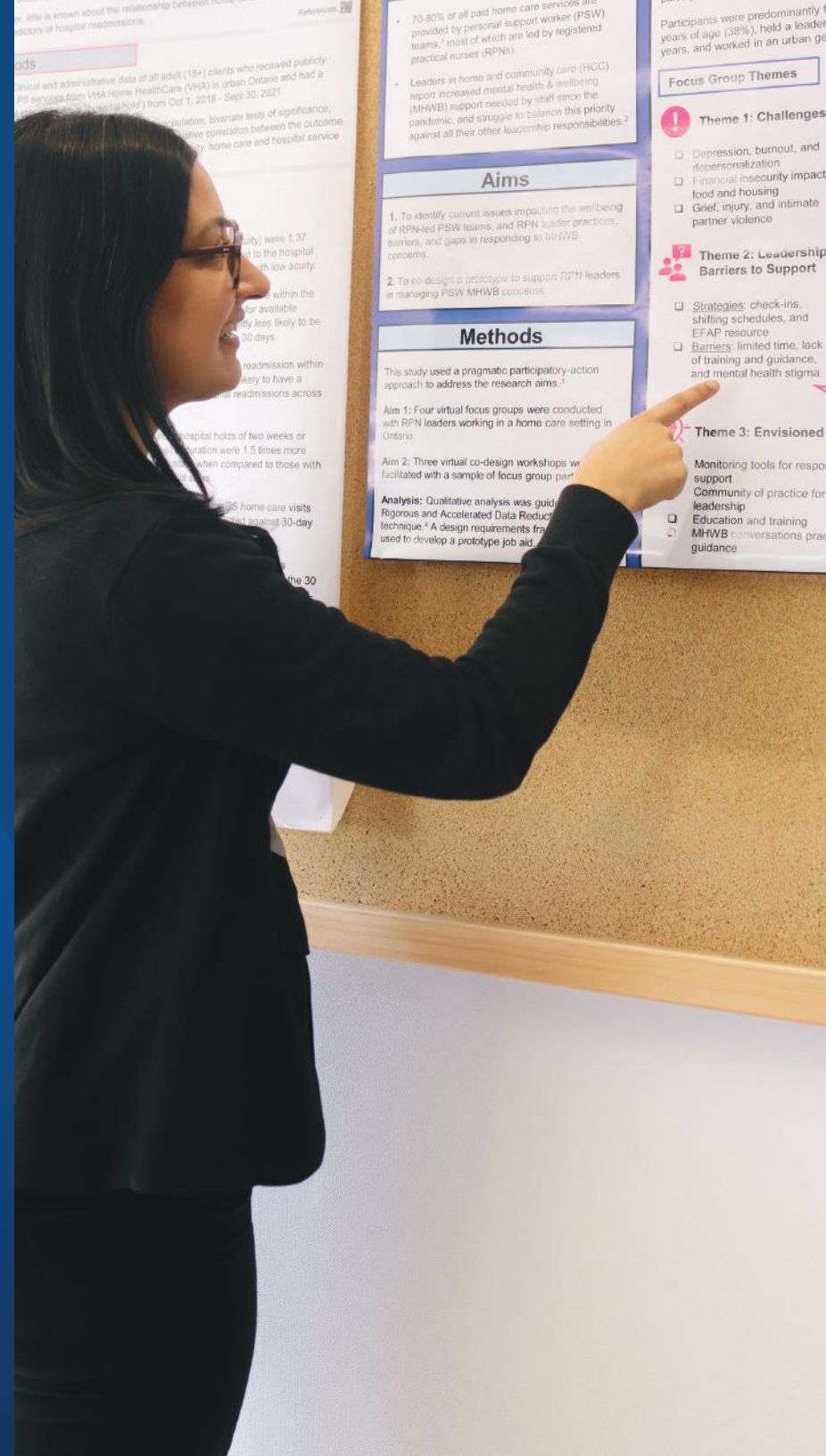


Table of Contents

3	Message From Leadership
4	Knowledge Mobilization
6	Our Team
8	Data Lake
11	Future of Homecare Science
15	Better Care
19	Connected System
23	Safer Teams
27	Innovation

Message from Leadership

VHA Home HealthCare (VHA)'s commitment to research has never been stronger. As one of the largest not-for-profit providers of publicly-funded home care in Ontario, we believe we have a responsibility to generate evidence to inform solutions that will help advance home care and the broader health system.

VHA's immense data holdings enable our Research Scientists to generate powerful insights that can help improve processes, practices and care, and inform policy and decision-making. A key area of focus this past year was creating a Cost-of-Turnover Model. Staff and service provider retention continues to be a critical issue across the broader health system. By building our understanding of its costs, this model can help us understand how to reduce staff turnover in home care.

I hope learning more about our work in the following pages ignites your curiosity. We encourage you to reach out with questions we can explore together.



**Dr. Kathryn Nichol,
RN, PhD**
President & CEO

Welcome to VHA's Research and Innovation Annual Report. The launch of our refreshed strategic plan set the tone for the year, reinforcing a bold commitment to lead with science and harness our team's collective expertise to strengthen decision-making, advance innovation, and improve care at VHA and across the homecare sector.

What distinguishes this team is a spirit of curiosity that powers their work every day, grounded in a deep commitment to homecare science and innovation. This shared belief in the vital role of home care in supporting people to remain at home is reflected in the depth, relevance, and impact of our research and innovation portfolio.

As you read this report, I hope you enjoy learning about our ongoing studies, as well as the exciting developments in worker safety, applied artificial intelligence and predictive analytics tools designed to help clinicians deliver the best possible care. I am proud of what this team continues to build carefully, responsibly and thoughtfully — and grateful for the opportunity to share it with you.



Dr. Sandra McKay, PhD, MBA
Vice President, Research & Innovation
and Chief Scientific Officer

Connected System

Peer-reviewed manuscripts

Zagrodney KAP, McKay SM, Jaffe R, Myers K, Sequera E, Uzelac D, & King EC. (2025). **The Cost of Turnover in Home Healthcare: A Conceptual Model.** Healthcare Management Forum. DOI:10.1177/08404704251412842

Zagrodney KAP, King EC, & McKay SM. (2025). **Two Gateways to Understanding the Health Workforce: Insights from Working with Organizational and Population-Level Data.** Healthcare Management Forum. DOI: 10.1177/08404704251361919

Zagrodney KAP, Jaffe R, McKay SM, Mangal K, Van Belle TA, Nichol KA, & King EC. (2025). **Scheduling, Income, and School Closures: Unlocking the Key Drivers of Home Care Personal Support Unplanned Absences Through Time-to-Event Regression Analysis.** Journal of Applied Gerontology. DOI:10.1177/07334648251316973

Rabeenthira P, Zagrodney KAP, King EC, Nichol KA, & McKay SM. (2025). **What Drove Clients' Decisions to Pause Personal Homecare Services Before and During the Pandemic?** Health Services Insights. DOI:10.1177/11786329251335877

Krassikova A, Yeung L, Bethell J, Puts M, McKay SM, Guilcher S, Kuluski K, & McGilton KS. (2025). **Unpacking the Dynamics of Transitional Care Units in Ontario, Canada.** Gerontologist. DOI: 10.1093/geront/gnaf155

Policy & Thought Leadership

McKay SM & Forsyth A. (2025). **A Practical Blueprint for Enabling AI Use in Healthcare Organizations.** Longwoods - Insights. <https://www.longwoods.com/product/27774>

Zagrodney KAP, Kralj B, & Sweetman A. (2025). **Canada's Aging Population Needs More Personal Support Workers.** Policy Options. [Canada's aging population needs more personal support workers](#)

In April 2025, Dr. Sandra McKay led a Big Ideas lecture with The Institute for Education Research (TIER) at University Health Network (UHN). The session focused on how VHA's rich data set highlights what home care looks like today and the essential role homecare research plays in evolving this work, for the benefit of clients, providers and our health system. Watch Dr. McKay's session [Why We Need More Home Care Science: Understanding the Evolving Nature of Home Care and Its Crucial Role in Supporting Population Health](#)



Safer Teams

Peer-reviewed manuscripts

Moreira NA, Nizzer S, McKay SM, Holness DL, & King EC (2025). **Who Meets the Emotional Support Needs of Home Care Workers? Characterizing Help-Seeking Practices and Preferences in the Workplace.**

Journal of Applied Gerontology. DOI: [10.1177/07334648251381410](https://doi.org/10.1177/07334648251381410)

Nizzer S, Moreira NA, Mohammed ECTL, Bruno F, McKay SM, Holness DL, & King EC (2025). **Workplace Challenges and Support Needs Experienced by Nurse Leaders in Home and Community Care During the COVID-19 Pandemic: A Qualitative Study.** Inquiry. DOI: [10.1177/00469580251329794](https://doi.org/10.1177/00469580251329794)

In October 2025, Dr. Emily King led a webinar for the Centre of Research Expertise for the Prevention of Musculoskeletal Disorders. **Passive Exosuits for Home Health Care: A Feasibility Study** examined healthcare providers' perceptions of their comfort, practicality, and usefulness.

Policy & Thought Leadership

Nizzer, S. (2025). **Amplifying RPN leadership in home and community care through co-design.** WeRPN Journal. April 14, 2025. <https://journal.werpn.com/amplifying-rpn-leadership/>

Better Care

Peer-reviewed manuscripts

Wong MC, D'Souza JE, Nizzer S, Heer T, Providence G, Fry D, Li-James S, Sundaralingam B, De Biasio L, Chan TA, Woode P, & King EC. (2025). **The VHA Interprofessional Collaboration Competency Framework for Home Healthcare: Development and Implementation Requirements in Ontario, Canada.** Home Health Care Management & Practice. DOI: [10.1177/10848223251354881](https://doi.org/10.1177/10848223251354881)

Nowrouzi-Kia B, King EC, Edwards B, Nizzer S, Yazdani A, Gohar B, Bani-Fatemi A, Howe A, Fayyaz Y, Ubhi S, & Chattu VK. (2025). **Examining Factors Associated with Job Satisfaction Among Homecare Rehabilitation Professionals Transitioning Out of the COVID-19 Pandemic in Ontario, Canada.** International Perspectives on Health Equity. DOI: [10.1108/IPHEE-12-2024-0056](https://doi.org/10.1108/IPHEE-12-2024-0056)

Nizzer S, Wong MC, McKay SM, & Nichol, KA. (2025). **Early Impacts of Co-Designed Playgroup for Children with Medical Complexity: A Mixed Methods Pilot Study.** Journal of Patient Experience. DOI: [10.1177/23743735251413869](https://doi.org/10.1177/23743735251413869)



In December, Dr. McKay was joined by VHA's VP, Digital Health and CIO Alistair Forsyth as keynote speakers at the Data Analytics for HealthCare Summit in Toronto. Their talk explored what it takes to turn data into a strategic advantage for artificial intelligence innovation and policy leadership.

Our
Team



Sandra McKay
PhD, MBA
Vice President
Research & Innovation



Emily King
PhD, P.Eng.
Director of
Research



Jordan D'Souza
MHI
Head of Innovation



**Katherine
Zagrodney, PhD**
Scientist



Madison Brydges
PhD
Scientist



Sonia Nizzer
MSW
Senior Research
Associate-Mental
Health Research Lead



Xuyang Tang
PhD
Senior Research
Associate



Philip Woode
MHI
Innovation Associate



Antonela Ilic
MSc
Research Associate



**Prakathesh
Rabeenthira**
MPH
Research Associate



Travis Van Belle
MPH
Research Associate



Emma Perera
MPH
Research Associate



**Emmelie
Mohammed**
BSch
Research Assistant



Pamela Hopwood
MSc
Research Associate



Paramjot Sidhu
MPH
Research Associate



Rachael Jaffe
MSc
Research Assistant



Alyssa Iglar
BASC
CIHR Health System
Impact Fellow



**Kashmeena
Mangal**
Research Assistant



Sage Kim
Research Student



**Abhishek
Chopra, MHI**
Research Assistant



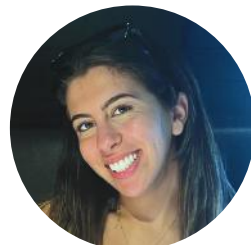
Belinda Xu
MHI
Innovation Assistant



Limi Adem
BSc
Research Assistant



Nishfa Rizwan
Practicum Student



Sandra Al Ali
MScPT
Innovation Assistant



Vanessa Rong
BSc
Research Assistant



Our commitment to AI readiness

Our work in artificial intelligence (AI) focuses on using data-driven tools to strengthen home-based care while maintaining accountability, equity, and trust. Our AI initiatives prioritize practical applications that support clinical decision-making, workforce planning, and operational efficiency in our highly decentralized care environments. Central to this work is a governance-first approach that aligns AI use with our organizational goals and risk tolerance, while reinforcing human-in-the-loop processes to ensure responsible innovation that improves access, quality, and sustainability within home and community care.

Understanding the cost of turnover in home care

VHA Research has developed a first-of-its-kind cost-of-turnover model for home care, addressing a long-standing evidence gap in the sector. To advance this work, VHA Scientist Dr. Katherine Zagrodny secured funding from the Social Sciences and Humanities Research Council to lead its development and applied use across homecare settings. Recently published in *Healthcare Management Forum*, the model reflects a collaborative effort between VHA Research, Human Resources, Finance, and Digital Solutions. This work provides a robust evidence base to inform policy discussions, strengthen advocacy, and support data-driven reforms to improve workforce stability and system performance in home and community care, while complementing previously published [wage-related analyses](#).

Canada's richest homecare data holdings

VHA hosts the largest home care database for research and AI development in Canada. Our comprehensive data warehouse contains nearly half a billion data points, making it the richest and most accurate homecare dataset nationally. This provides a unique foundation for applied research and AI-inspired innovation across clinical, operational, and workforce domains. Our scientists have developed predictive models, including hospital readmission risk for homecare patients and absenteeism patterns to inform operational planning.

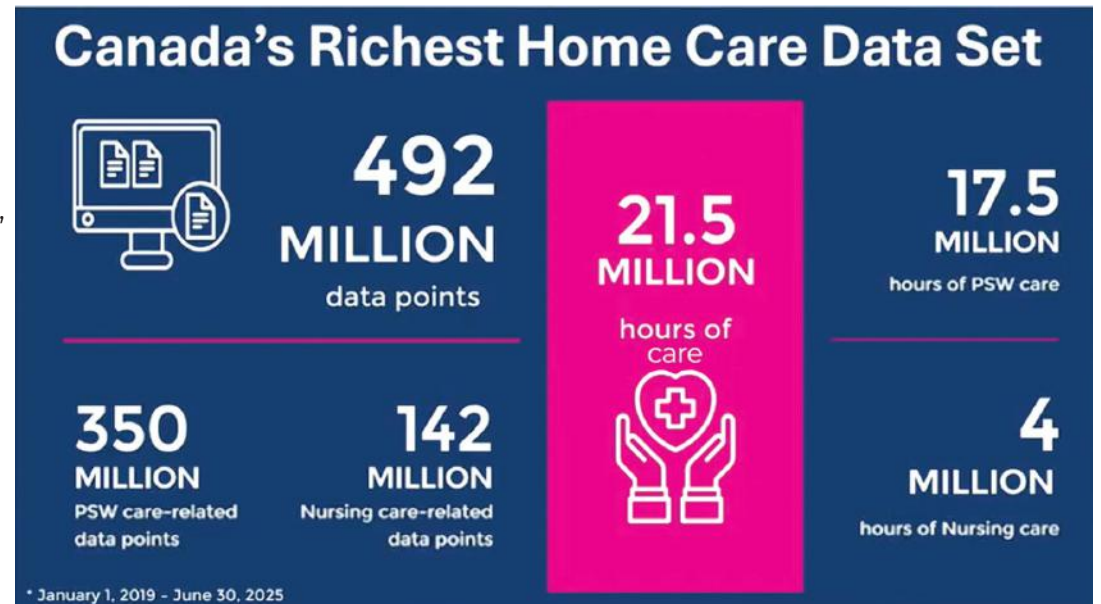
Inclusive AI-AMS-Fitzgerald Fellow



Like many healthcare organizations, we are increasingly turning to technology and the potential of AI to drive efficiency in operational tasks. If realized, these efficiencies can help bridge the growing gap of unmet needs across our healthcare system. These powerful tools will have far-reaching impact and must be deployed thoughtfully and judiciously. Through Dr. Emily King's AMS-Fitzgerald Fellowship in Artificial Intelligence and Human-Centred Leadership, VHA is advancing a future of inclusive, responsible AI.

Leading the way

Research & Innovation is leading the way at VHA by advancing predictive analytics. These tools are identifying factors associated with increased risk of hospitalization and 30-day readmissions, strengthening clinical documentation through ChartCoach AI, and trialing innovative translation technologies. These initiatives ensure that when they are ready, these tools and insights are embedded into practice, turning data, evidence, and innovation into measurable improvements.



More Home Care Reduces Readmission Risk







Homecare Scientists

In the early summer of 2025, VHA strengthened its long-standing commitment to research and innovation in home and community health care with the creation of two new Homecare Scientist roles. Dr. Madison Brydges and Dr. Katherine Zagrodny were announced as the first to hold this title at VHA. Dr. Brydges joined VHA with a background as a social sciences researcher focused on health and aging, previously with the National Institute on Aging. Dr. Zagrodny is a health economist specializing in the homecare PSW workforce who has worked at VHA for five years, most recently as a Senior Research Associate.

As Homecare Scientists, both Dr. Brydges and Dr. Zagrodny are academically trained experts who apply scientific methods to improve the quality, efficiency and safety of home-based care. Using real-world data, they evaluate trends, assess emerging technologies and develop evidence-informed strategies. By translating data into action, they support client-centred decision-making and strengthen VHA's leadership in homecare science.



Future of Homecare Science

We are committed to investing in those with the skills, experience, and passion to lead with science and create a thriving, high-quality, and sustainable homecare sector.

Future of Homecare Science



VHA Graduate Research Fellows



Ogechi Obi, BPharm, is a PhD student in Clinical Epidemiology and Health Care Research at the Institute of Health Policy, Management and Evaluation, University of Toronto, whose research examines social admissions and gaps in post-discharge support that contribute to avoidable hospitalizations among older adults.



Jasmine Friedrich Yap, BSc, is a Master of Rehabilitation Research candidate at Dalhousie University whose work focuses on adapting fracture prevention guidelines for Canadian homecare settings to support informed decision-making and improve outcomes for clients and caregivers.



Joy Lai, BAsC (Hons), is a Master of Applied Science student at the University of Toronto's Institute of Biomedical Engineering whose research applies artificial intelligence and co-design principles in AgeTech to develop ethical digital tools that support aging in place for people living with dementia.



Jennifer Hyc, BSc (Hons), is a Master of Science student in Health Systems Research at the Institute of Health Policy, Management and Evaluation, University of Toronto, whose research examines identifying and defining patient complexity in integrated hospital-to-home care models to better support older adults transitioning home.

Collaborative Academic Practice Fellows



CAP INNOVATION
FELLOWSHIP

Dharmesh Bochia is a physiotherapist with over 15 years of experience in community and rehabilitation care who has been with VHA Home HealthCare since 2018. His work focuses on supporting client independence and quality of life through evidence-based community physiotherapy. As a Clinical Lead, he is advancing quality improvement initiatives, integrating innovation and technology, and developing leadership and mentorship capabilities to enhance client outcomes and provider efficiency.



CAP INNOVATION
FELLOWSHIP

Sumathi Parama Thayanithi, BScN, MNPPL, is a Registered Nurse with over 28 years of experience across hospital, long-term care, and community settings, including 14 years as a Care Manager in home and community care. As a Champion of Change Fellow, she has contributed to quality improvement initiatives strengthening discharge processes and person-centred care. Her current work focuses on developing a Discharge Readiness Toolkit to improve hospital-to-home transitions, with attention to caregiver burden, dementia care, and culturally diverse populations.

Developing Homecare Scientists



Work as a Social Determinant of Health

Pamela Hopwood, a PhD candidate at the University of Waterloo, joined VHA as a CIHR Health System Impact Fellow, bringing deep expertise in PSW research and the social determinants of health. During her fellowship, Pamela advanced a critical case study within VHA's PSW Workplace Violence reporting tool project. Her work centres on amplifying worker voices, strengthening reporting pathways, and examining the supportive role of supervisors. This impactful research will inform practical, system-level approaches to addressing workplace violence and fostering safer, more supportive homecare environments.



Medication Safety for Aging-in-Place

Alyssa Iglar, our CIHR Health System Impact Fellow, continues to advance medication management technologies that support adherence, safe aging in place, and independence. Her work is grounded in direct engagement with clients, families, and VHA subject-matter experts, including our homecare pharmacist, to define the functional requirements of effective medication technologies in the home. With funding from the AGE-WELL EPIC Trainee Program, she is working closely with the Innovation team and IDEM to accelerate adoption and strengthen pathways to successful commercialization.



Sonia Nizzer is advancing her professional development by pursuing doctoral studies at the Institute of Health Policy, Management and Evaluation, within the Dalla Lana School of Public Health at the University of Toronto. Her thesis will focus on exploring how AgeTech and smart home monitoring technologies (re)shape personal support workers' everyday labour in homecare settings.

VHA Champions of Change Fellows

Our newest cohort of VHA Champions of Change Fellows have committed to tackling the challenge of information continuity between homecare providers. Through the curriculum-focused fellowship program, the Champions will work closely with their Research mentors and clinical colleagues to develop practical solutions to strengthen client and provider experience and improve safety.



Maria Maila Casido
PSW



Claudia Cheng
RN



Tanan Karro
PSW Coach





Better Care

High-quality care starts with listening and learning from point-of-care providers and client partners, using their insights to strengthen clinical decision-making and improve the care experience.



Defining PSW Care Team Continuity

Over the past year, we advanced a significant body of work focused on PSW care team continuity, addressing a long-standing gap in how continuity is defined, measured, and managed in home care. Care team continuity is central to a client-centered approach to scheduling and positive client and provider experience. This work navigated the inherent complexity of decentralized service delivery, bringing together operational leaders and system partners to examine continuity in contemporary homecare. Due to our embedded nature we were able to integrate established academic evidence, and with our contemporary homecare data, the team developed new home

care – appropriate metrics and benchmarks designed to be both rigorous and practical. This work moved beyond conceptual discussions to develop tools that support day-to-day decision-making and system-level performance monitoring. Importantly, engagement with Ontario Health, Ontario Health atHome and service provider organization partners occurred throughout the process. A manuscript has been developed and shared for peer-review to invite broader scrutiny, learning, and adoption across the sector. Together, this work reflects the team’s ability to translate evidence into meaningful, system-relevant impact.



Homecare PSW Service Demands

This study delivers contemporary, data-driven insight into how homecare clients navigated unprecedented disruption during the COVID-19 pandemic. Using our longitudinal administrative data following approximately 20,000 clients over time, we examined why some clients temporarily paused their personal support care and how long those pauses lasted. Overall, the frequency and length of service holds more than doubled early in the pandemic, while clients with higher needs, longer service histories, and more intensive supports were less likely to pause care. By understanding the drivers of client choice during a crisis, we can strengthen workforce planning and support responsive, client-centered care.

Engaging PSWs: Observe, Coach, Assist & Report

PSW's play a critical role in delivering person-centered care. In this collaborative project led by [SE Research Centre](#), we are co-designing and testing practical resources to guide the use of the Observe, Coach, Assist and Report (OCAR) framework, designed to further leverage PSW's expertise and contributions as valued members of the interdisciplinary homecare team.





Connected System

By working closely with health system partners and academic collaborators, we are advancing evidence-based insights that inform public dialogue on the essential role of home care in achieving health system excellence.



Looking Back: The evolution of homecare service delivery



Drawing on a decade of population-level data (2013-2023), from our [ICES partners](#), we developed one of the most comprehensive and up-to-date pictures of Ontario's publicly-funded adult homecare services available today. The findings highlight the central role of personal support workers and nurses, the growing complexity of client needs, and the changing contributions of rehabilitation and allied health services. By bringing clarity to long-standing

data gaps, this research equips system leaders, policymakers, and providers with practical evidence to support planning, workforce development, and health system transformation. Most importantly, it reinforces the vital role of home care in helping people remain safely at home, where they prefer to be, while strengthening the sustainability of the broader health system. This is an important and timely contribution to understanding how home care is evolving in Ontario.



While home care serves all ages, pediatric clients remain a small, distinct group, and little is known about how children's home care has evolved despite targeted policy efforts. Our decade-long analysis shows Ontario Health-funded pediatric home care declining—particularly for rehabilitation services, and a greater proportion receiving nursing services.

Influences on workforce participation

Using VHA's extensive longitudinal dataset, preliminary prediction models analyzed job turnover amongst over 2,000 homecare PSWs. Lower income, greater travel distance, and shorter tenure were consistently linked to higher turnover, highlighting key areas for targeted retention strategies to strengthen the stability of the homecare workforce.

PSW absences — influence of the broader care economy

Unplanned absences among homecare PSWs were analyzed before and during the pandemic (2019-2021). PSWs with higher incomes and shorter travel distances were significantly less likely to have an absence the following week. School closures significantly affected this gendered workforce, highlighting the importance of PSWs within the broader care economy.





Safer Teams

To inform enhancements to the work experience of our VHA team, we prioritize internal research questions focused on workplace well-being and opportunities to improve workplace health & safety.



Broadening our evidence-informed approach to workplace safety

VHA Research continues to focus on building the evidence base for creating a more open safety culture around workplace violence and harassment (WVH).

Extending our approach to include Nursing and Rehabilitation providers

Through focus groups and co-design sessions with nurses, rehabilitation providers, and their supervisors, we have identified how to adapt and extend VHA's WVH reporting and response strategy to meet the unique needs of these provider groups.

Evidence to strengthen PSW reporting experiences

Rigorous WeRPN-funded research is generating insights into PSWs' and supervisors' experiences with VHA's new WVH reporting and response strategy, identifying opportunities to continue to strengthen this approach.

Spreading to other home and community care providers

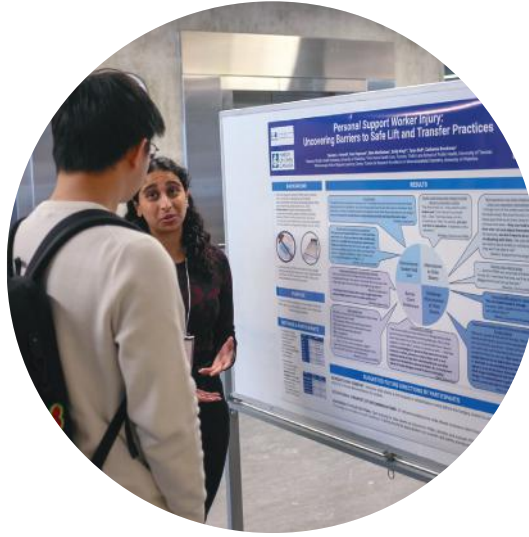
Through a CREOD-funded partnership with The Neighbourhood Group (TNG), we are working out how to adapt VHA's approach to TNG's care context and systems. By studying the processes and changes required, we are developing a template and resources to support spread to other home and community care organizations.





Are exosuits practical to use during care?

Lab-based studies have shown that exosuits can reduce ergonomic exposures, but are they practical to use while providing home care? Our CRE-MSD-funded study found that most PSWs who tried the suits during simulated care activities found them comfortable and helpful, and 70% are open to trying them during client care. Find out more about this work in VHA's Impact Report.



Why are slide sheets not always used as recommended?

Even when they are available and PSWs have the necessary training, barriers to use can remain – increasing risks to clients and caregivers. As part of our co-leadership of the Client/Patient Handling Community of Practice, our CRE-MSD-funded partnership is working to uncover these barriers and identify opportunities to improve safety during care.



Enabling supervisor support

When homecare providers struggle with their mental health and well-being, their supervisor can be a critical source of support. Through interviews with supervisors, we are developing insights into their strategies for providing support, barriers that they encounter, and opportunities for resources to strengthen support practices.







Innovation

Advancing Safe, Sustainable,
and Independent Care Through
Evidence-Driven Technology



Improving client rehab outcomes through innovation: VHA's digital physiotherapy pilot

For many VHA clients, physiotherapy is a vital part of their care journey. In 2024, VHA physiotherapists delivered more than 100,000 visits across Ontario. To improve access to physiotherapy supports, VHA's Innovation team partnered with [Curovate](#) in mid-2025 to pilot the Rehab Recovery Mobile App. The six-month program enrolled 21 participants and included free virtual physiotherapy to support recovery and lower body strengthening.

Data collected throughout the pilot assessed usability, engagement and overall value. Participants reported high satisfaction, with 69% rating the app as intuitive and an average confidence score of 4.2 out of 5 when completing exercises independently.

The pilot also identified opportunities for improvement, including greater customization, stronger integration with physiotherapy workflows and enhanced accessibility features such as multilingual support. Overall, findings show digital rehabilitation tools can effectively complement in-person care, extending support beyond scheduled visits and promoting recovery, independence and better health outcomes.



Delivering more equitable and more secure care with the help of AI-powered translation

Language barriers can pose challenges for service providers visiting clients. Staff and service providers have sometimes relied on tools like Google Translate or informal translators, including family members, which can create inconsistencies and raise privacy concerns. As translation technology advances, VHA's Innovation team explored whether AI-based tools could offer a secure, accurate and user-friendly solution which helps deliver equitable and culturally respectful care.

From June to August 2025, a pilot was conducted across multiple disciplines and regions to evaluate three AI-enabled translation tools. Each supported the top five client languages, with one adding four more mid-pilot in response to team member feedback. Based on user input, one tool was selected to move forward to a larger trial phase involving approximately 150 Rehab and Nursing staff and service providers to assess performance at scale, accuracy in high-demand languages and long-term feasibility.

As our journey into AI adoption continues, embracing AI-based translation is just one of the many possibilities on how we can make the care we provide our clients even better and more equitable.



Bringing Global Innovation Home: VHA at HLTH Europe 2025

VHA's Innovation team entered the global stage at HLTH Europe 2025 in Amsterdam, connecting with bold innovators, health leaders, and breakthrough technologies from across Europe. Attendance brought back actionable insights, strategic partnerships, and fresh inspiration to shape VHA's next generation of community-based innovations.



Understanding Medication Support Needs in Home Care

In partnership with the University of Waterloo, our Medication Management project examined how homecare clients manage medications and the level of PSW support required. Following quantitative analysis, we completed nine in-depth interviews with clients and PSWs. Findings highlight key barriers and technology opportunities to strengthen safe, independent medication management at home. We are excited about sharing what we found and are preparing for publication in 2026.



Camp Innovate: Igniting Innovation at VHA

This year's 'Camp Innovate' brought together 8 technology partners, VHA staff, and client partners to explore emerging solutions and strengthen our innovation culture. Through structured engagement within the Community InnoVHAtion Lab, ideas were surfaced, relationships deepened, and high-potential technologies advanced for further evaluation and pilot consideration.



Inspiring the Next Generation of Home Healthcare Innovation

VHA's Innovation Team is inspiring the next generation of home healthcare innovators through ecosystem leadership. From coaching founders in the Velocity AgeTech Challenge to hosting global executive MBA leaders from Rotman's Healthcare Innovation program, VHA is shaping the future of care beyond our walls.

By the Numbers



Publications:

9

Peer Reviewed

3

Policy/Thought Leadership



27

Academic Trainees



9

Research Fellows



69

Client & Providers Engaged



7

Graduate Student Fellows



4

Thought Leadership Events



13

Grants Awarded



\$465K

Grant Dollars Awarded

VHA Home HealthCare would like to acknowledge that we are living and working on Indigenous land. This includes the territories of the Unceded Algonquin Anishinabe, the Attawandaron, the Anishinaabeg, the Haudenosaunee, the Lunaapeewak, the Mississaugas of the Credit and the Wendat peoples.

100

1925 • 2025



Creating More Independence for Over 100 Years

Contact Us

VHA Home HealthCare
30 Soudan Avenue, Suite 600
Toronto, ON M4S 1V6
Phone: 416-489-2500

Follow Us Online



www.vha.ca