



HAIR
FOR
MANCE

MEN'S COLLECTION
BY ELLEN WILLE

QUALITY MAKES THE DIFFERENCE

Smart, kultiviert und einzigartig

Unsere Linie HAIRforMANce übersetzt die Ansprüche an Attraktivität und Qualität des modernen Mannes in herausragendes Hairdesign.

Die topaktuellen Looks und zeitlosen Stile verbinden hochwertige Verarbeitung mit bestem Tragekomfort und authentisches Aussehen mit natürlichen Farben. Entdecken Sie unsere neueste Men's Collection!

Smart, sophisticated and unique

Our HAIRforMANce range is the answer to the modern man's demands for attractiveness and excellence. The cutting-edge looks and timeless styles combine premium workmanship with the best wearing comfort. They also ally an authentic appearance and natural colours.

Discover our latest Men's Collection!

Smart, cultivé et singulier

Notre ligne HAIRforMANce traduit les exigences de goût et de qualité de l'homme moderne dans un Hairdesign exceptionnel. Les looks ultra-tendances et les styles intemporels allient une finition haut-de-gamme et un confort sans pareil à un aspect authentique par ses couleurs très naturelles. Venez découvrir la toute dernière collection Homme !





HIGH
HEAT
FIBER

★★★★

BRIAN

COLOURS

M5s, **M7s**, M17s, M36s,
ESPRESSO tipped,
TABAC rooted,
SAND rooted



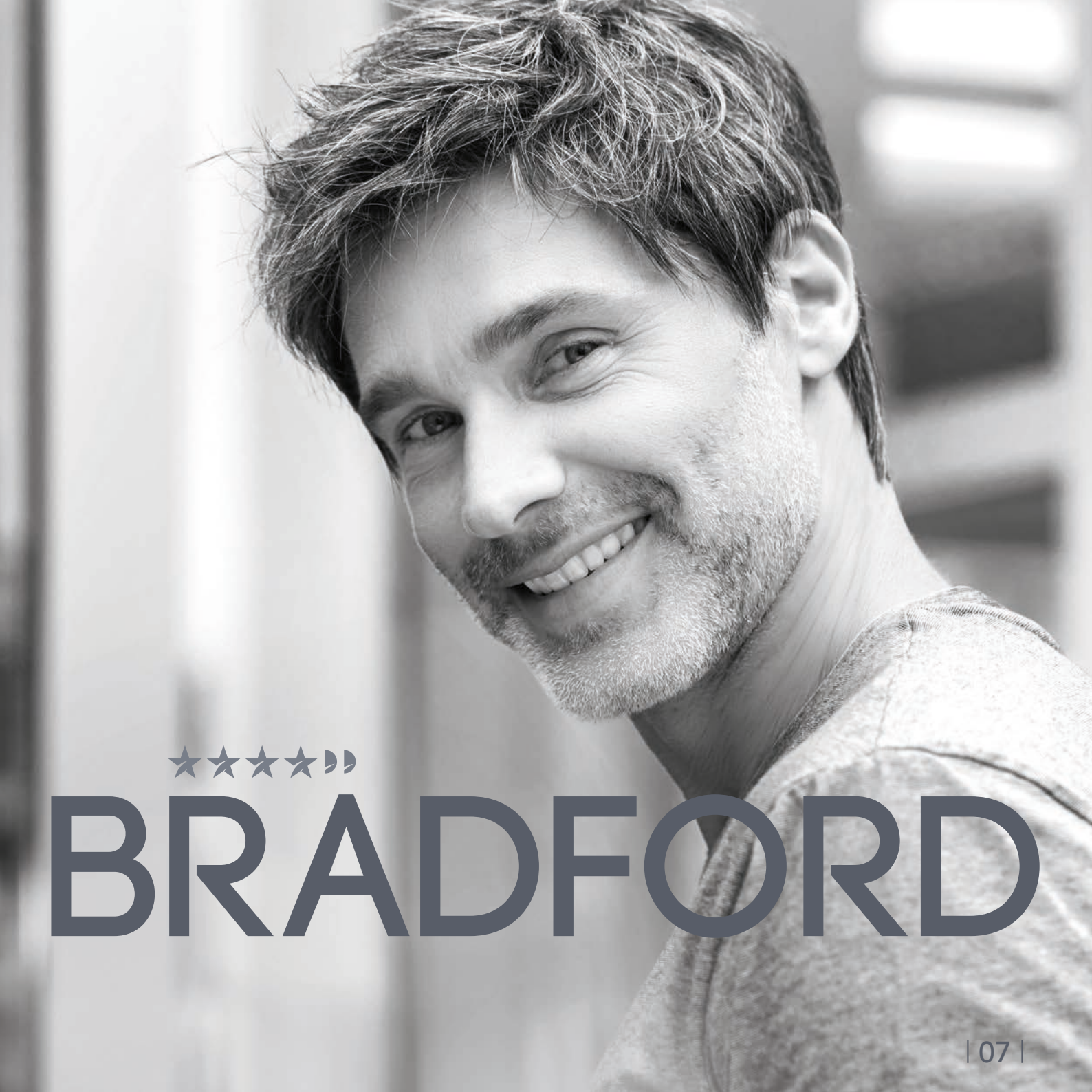
STYLING





COLOURS
M3s, M5s, M7s,
M17s, M36s,
M38s, M51s, M56s,
PEPPER mix





★★★★

BRADFORD



BRAD



COLOURS

M2s, M3s, **M5s**, M7s, M17s,
M14s, M39s, M34s, M36s, M38s,
M44s, M46s, M51s, M56s,
PEPPER mix



BRAD



COLOURS

M2s, M3s, M5s, M7s, M17s,
M14s, M39s, M34s, M36s, M38s,
M44s, M46s, M51s, **M56s**,
PEPPER mix







★★★★★

GEORGE

5-STARS

COLOURS

M3s, M5s, **M7s**, M17s,
M14s, M34s, M36s, M38s,
M44s, M46s, M51s, M56s,
PEPPER mix

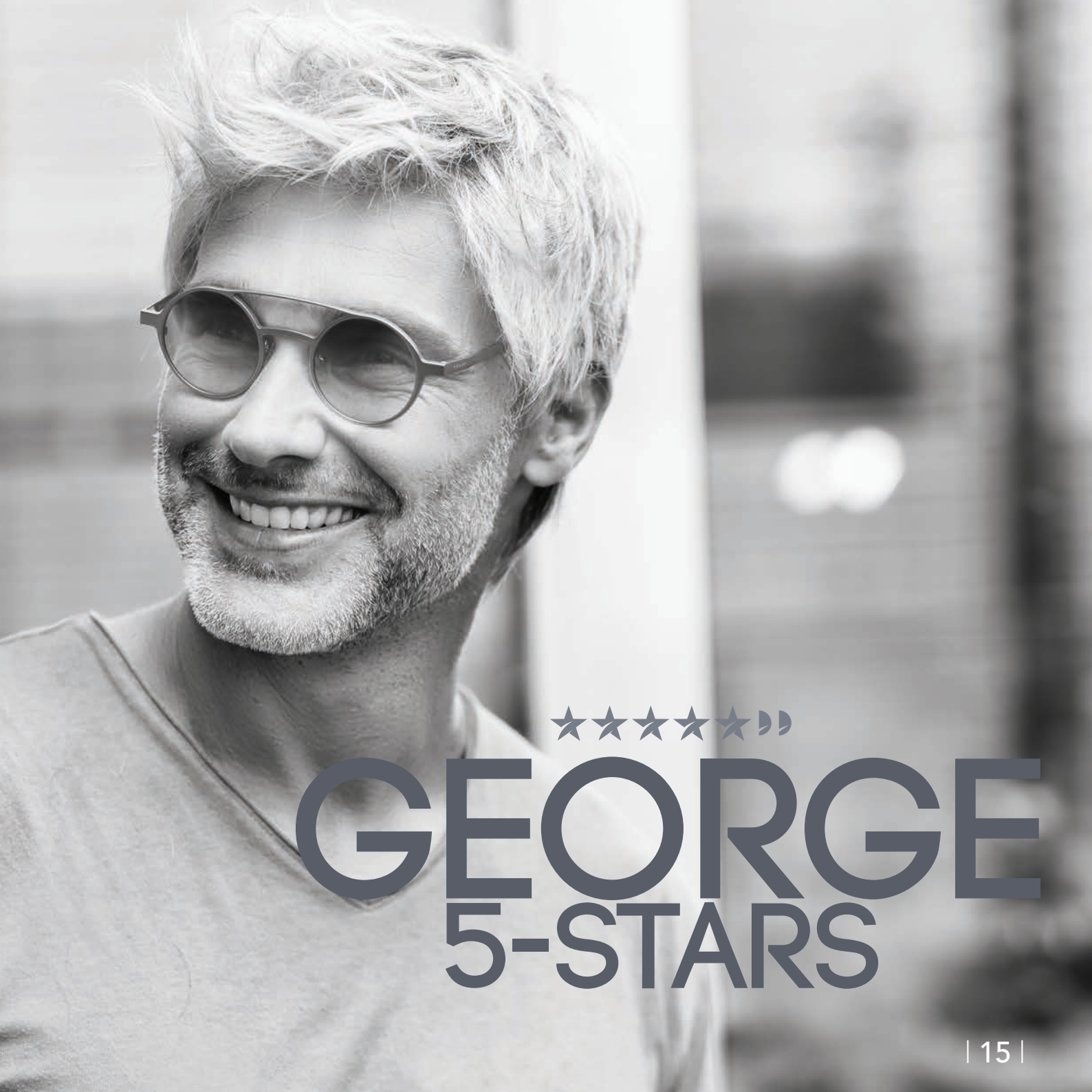




COLOURS

M3s, M5s, M7s, M17s,
M14s, M34s, M36s, M38s,
M44s, M46s, M51s, **M56s**,
PEPPER mix





★★★★★))

GEORGE 5-STARS



JOHNNY



COLOURS

M2s, M5s, **M7s**, M17s, M14s,
M39s, M36s, M44s



JOHNNY

COLOURS

M2s, M5s, M7s,
M17s, M14s, M39s,
M36s, **M44s**







STEVEN SPORT



COLOURS

M5s, M7s, M17s, M14s,
M34s, M36s, M38s, M44s,
M46s, M51s, M56s





COLOURS

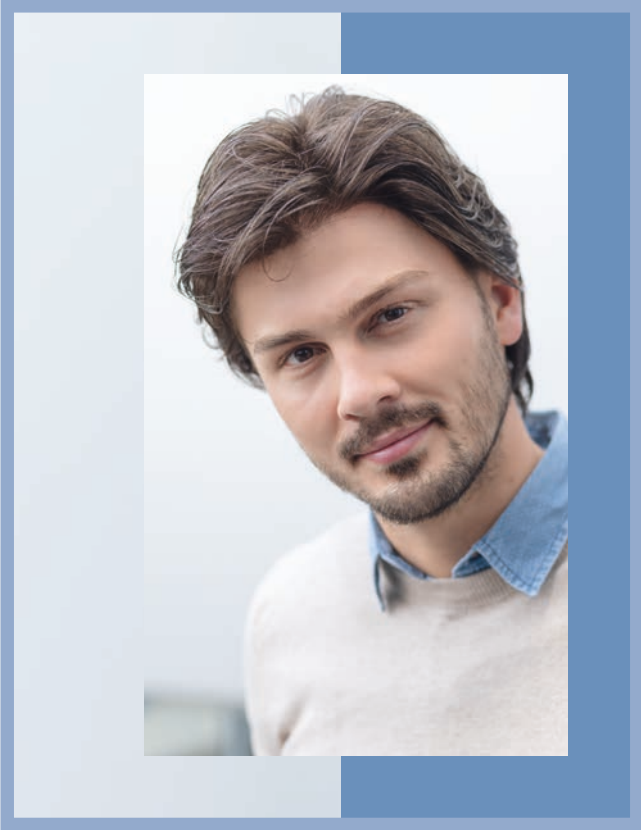
M5s, M7s, M17s, M14s,
M34s, M36s, M38s, M44s,
M46s, **M51s**, M56s



STEVEN

SPORT





★★★★☆

GARY

COLOURS

M3s, M5s, M36s,
M38s, M44s, M56s,
COFFEE mix,
TEAK mix,
SAND mix,
PEPPER mix





COLOURS

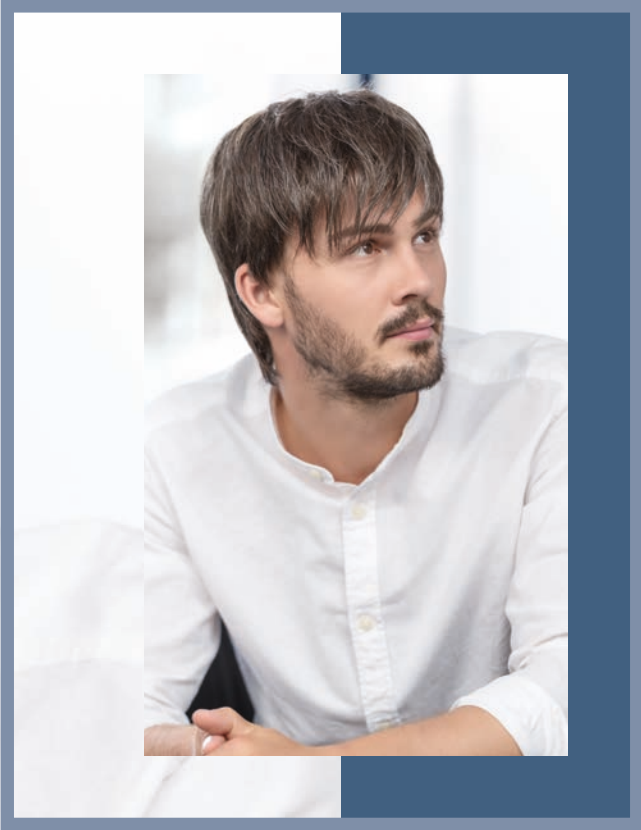
M3s, M5s, M36s,
M38s, M44s, M56s,
COFFEE mix,
TEAK mix,
SAND mix,
PEPPER mix





GARY





★★★★★))

ROGER 5-STARS

COLOURS

M5s, M7s, M17s,
M34s, M36s, M38s,
M44s, M46s, M51s,
M56s



HIGH-TECH-MATERIALIEN UND ULTRA-LEICHTE VERARBEITUNG AUF NEUESTEM STAND. QUALITÄT MACHT DEN UNTERSCHIED.

State-of-the-art high-tech materials and ultra-light processing.
Quality makes the difference.

**Des matières high-tec et une finition ultra-légère à la pointe du progrès.
La qualité qui fait la différence.**

★★★★★

100% handgeknüpft

100% hand tied

100% fait main

100% fatta a mano

100% anudada a mano

100% ручная работа

★★★★

Monofilament + Tresse

Monofilament + wefted

Monofilament + tresses

Monofilamento + annodatura a macchina

Monofilamento + anudada a máquina

Монофиламент + трессы

★★★

Teil-Monofilament – Scheitel

Including mono-parting

Partie raie en monofilament

Monofilamento parziale – Riga

Monofilamento parcial – Raya

Частичный монофиламент на проборе

★★

Teil-Monofilament – Wirbel

Including mono-crown

Partie rond-point en monofilament

Monofilamento parziale – Vortice

Monofilamento parcial – Coronilla

Частичный монофиламент

только на макушке

›

Filmansatz

Lace front

Bordure invisible

Tulle Cinema

Tul frontal

Невидимая фронтальная линия

››

Erweiterter Filmansatz

Extended lace front

Bordure invisible extra-longue

Tulle cinema prolungato

Tul frontal alargado

Расширенная фронтальная линия





COLOURS

M5s, M7s, M17s, M34s,
M36s, M38s, **M44s**, M46s,
M51s, M56s



★★★★★”

ROGER

5-STARS



COLOURS

M5s, M7s, M17s, M39s,
ESPRESSO lighted,
TABAC lighted,
WALNUT mix

STYLING



HIGH
HEAT
FIBER



DAVE



★★★★»

JUSTIN

COLOURS

M3s, M5s, **M7s**, M17s,
M14s, M36s, M38s, M44s,
M46s, M51s, M56s,
PEPPER mix







JUSTIN

COLOURS

M3s, M5s, M7s, M17s, M14s, M36s,
M38s, **M44s**, M46s, M51s, M56s,
PEPPER mix



THE EXPERT CARE LINE BY ELLEN WILLE



Styling und Pflege direkt vom Experten. Die Care-Produkte von ellen wille sind perfekt auf die Anforderungen unserer hochwertigen Perücken abgestimmt. Ideal zum Frisieren. Optimal für langanhaltenden Glanz und Geschmeidigkeit.

Styling and care directly from the experts. The ellen wille hair care products perfectly match the needs of our high-quality wigs. Ideal to pamper your hair. Optimal for long-lasting glance and silky smoothness.

Styling et soins développés par nos experts. La ligne de produits de soin est parfaitement adaptée aux exigences de nos perruques haut de gamme. Idéal pour le coiffage. Optimal pour l'effet soyeux et éclatant de votre chevelure.

DOWNLOAD
THE CURRENT
CATALOGUE:

www.ellen-wille.de

PERMA FIT

HAIRSYSTEMS FOR MEN



Das System für dauerhaften Halt

Entdecken Sie Perma Fit, die innovative Systemlösung von ellen wille für permanent befestigtes Haar.

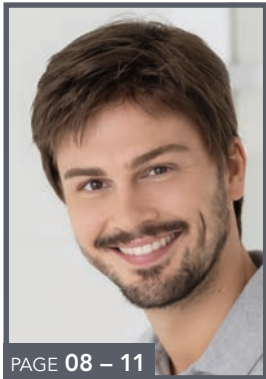
The system for long-lasting wear

Discover Perma Fit, the innovative system solution from ellen wille for permanently attached hair.

Le système pour une tenue durable

Venez découvrir Perma Fit, la solution innovante d'ellen wille pour un système de fixation capillaire permanente.

OVERVIEW



PAGE 08 – 11

★★

BRAD

M2s, M3s, **M5s**,
M7s, M17s, M14s,
M39s, M34s, M36s,
M38s, M44s, M46s,
M51s, M56s,
PEPPER mix



PAGE 06 – 07

★★★★

BRADFORD

M3s, M5s, M7s,
M17s, M36s, M38s,
M51s, M56s,
PEPPER mix



PAGE 04 – 05

★★★★

BRIAN HIGH HEAT FIBER

M5s, **M7s**, M17s, M36s,
ESPRESSO tipped,
TABAC rooted,
SAND rooted



PAGE 34 – 35

★★★

DAVE HIGH HEAT FIBER

M5s, M7s, M17s, M39s,
ESPRESSO lighted,
TABAC lighted,
WALNUT mix

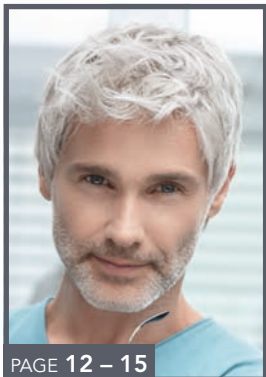


PAGE 24 – 27

★★★★

GARY

M3s, M5s, M36s,
M38s, M44s, M56s,
COFFEE mix,
TEAK mix,
SAND mix,
PEPPER mix



PAGE 12 – 15

★★★★★

GEORGE 5-STARS

M3s, M5s, M7s, M17s,
M14s, M34s, M36s, M38s,
M44s, M46s, M51s, **M56s**,
PEPPER mix



PAGE 16 – 19

★★★★

JOHNNY

M2s, M5s, **M7s**,
M17s, M14s, M39s,
M36s, M44s



PAGE 36 – 39

★★★★

JUSTIN

M3s, M5s, **M7s**, M17s,
M14s, M36s, M38s, M44s,
M46s, M51s, M56s,
PEPPER mix



PAGE 28 – 33

★★★★★

ROGER 5-STARS

M5s, M7s, M17s, M34s,
M36s, M38s, **M44s**,
M46s, M51s, M56s



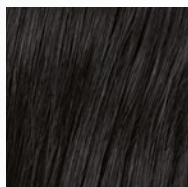
PAGE 20 – 23

★★★★

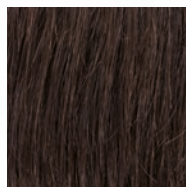
STEVEN SPORT

M5s, M7s, M17s,
M14s, M34s, M36s,
M38s, M44s, M46s,
M51s, M56s

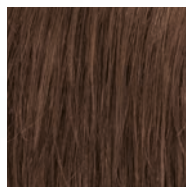
COLOURS



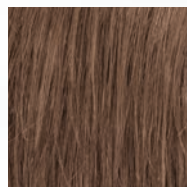
M2s



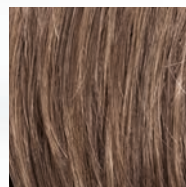
M3s



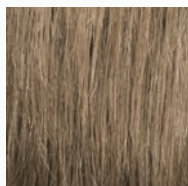
M5s



M7s



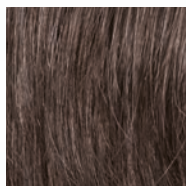
M17s



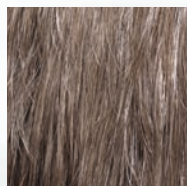
M14s



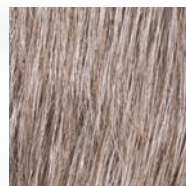
M39s



M34s



M36s



M38s



M44s



M46s

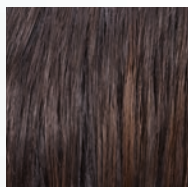


M51s

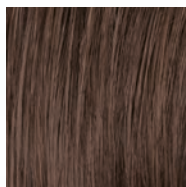


M56s

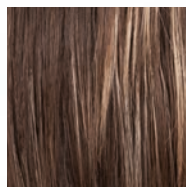
TREND COLOURS



ESPRESSO
2.4.8



COFFEE
6.8.10



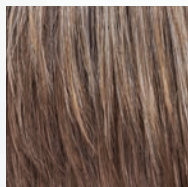
TABAC
8.30.12



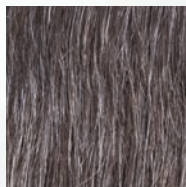
TEAK
10.14.8



WALNUT
10.16.12



SAND
12.16.14



PEPPER
39.44

mix

Modische Farbmischung und Strähnung

Fashionable colour blend and high/lowlights

Effet méché dans des coloris tendance

Miscela di tonalità diverse alla moda

Mezcla de colores y mechas de moda

Модный микс цветов и мелирование

rooted

Natürliche Ansatzfarbgebung

Natural-looking rooted colours

Effet racine dans un ton plus foncé

Effetto ricrescita:
la base delle meche è scura

Raíz naturalmente más oscura

Эффект отросших корней

tipped

Farblich abgesetzte Spitzen

Colour contrasting tips

Pointes contrastées

Effetto degradé

Efecto degradado en las puntas

Концы контрастного цвета

lighted

Farb-Highlights im Ponybereich

Highlighted fringe

Effet méché accentué sur la frange

Riflessi chiari nella parte della frangia

Reflejos más claros en el flequillo

Цветовые акценты в области челки

For more information on the quality of HAIRforMANce wigs, see **page 30**.



www.ellen-wille.de