

RTOWN GALLERY

GRAPEVINE CONTEMPORARY



GROUP EXHIBITION

2026

www.rtowngallery.com

RTOWN GALLERY

A multifaceted space for contemporary art.

RTown Gallery is dedicated to fostering a vibrant art community in the heart of historic downtown Grapevine, Texas and surrounding region.

Our monthly exhibitions showcase original works that spark conversation, take risks, and explore diverse mediums; art that's both striking and meaningful for any collection.

Beyond showcasing contemporary creativity, RTown Gallery also hosts artist receptions, community events, and is available as a unique venue for private gatherings and meetings.



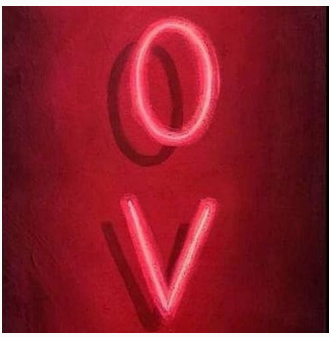
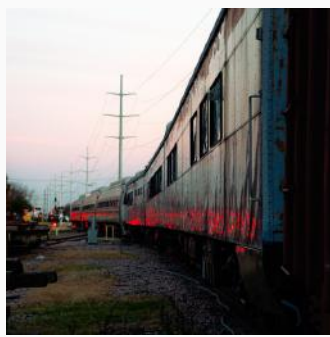
Cover: "Rooted", Adriane McMillon, 48"x48", Acrylic Paint

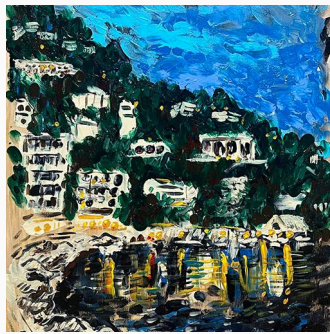
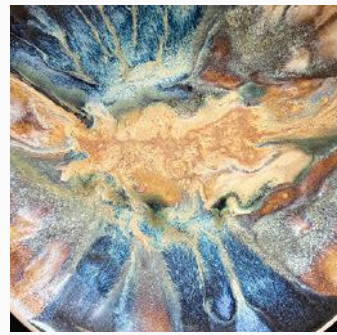
ABOUT THE EXHIBIT

Grapevine Contemporary is a group exhibition highlighting the breadth and vitality of artistic voices across the Dallas-Fort Worth area. Now in its third year at RTown Gallery, the exhibition brings together more than fifteen local artists whose work reflects the richness and diversity of the region's creative community. Each artist presents a distinct perspective while contributing to a broader dialogue around material, process, and place. Spanning painting, sculpture, photography, and mixed media, the exhibition embraces a wide range of subjects, techniques, and approaches; offering moments that are both deeply personal and widely resonant.

Grapevine Contemporary invites viewers to experience the evolving landscape of contemporary art within DFW. The result is an exhibition that feels layered and dynamic, rooted in community while expansive in vision.

Featured Artists: Jamal McCray, Cait Elizabeth, Emme Landes, Alan Siggers, Nathan Basset, Kame, Christy Kaderly, Abbigail Spillane, Joshua Sooter, Madeline Dowd, James-Ryan Cahalan, Melinda Brown, Grace Woodall, Charles James, Matthew Jones, Gloria Lundin, Adriane Mcmillon, Philip Samson





Contact info@rtowngallery.com or stop by
RTown Gallery in Grapevine, TX to collect.

www.rtowngallery.com

WORDS FROM THE ARTISTS

Jamal McCray

Jamal McCray is a visual artist exploring faith, symbolism, and narrative through poetic imagery. Their work blends spiritual themes, storytelling, and layered symbolism to create pieces that invite reflection, revelation, and deeper conversation between the viewer, the world, and God.

Statement:

*My work explores spiritual ideas through bold symbolism and simplified forms. Inspired by biblical narratives and parables, I translate spiritual concepts into images that feel both playful and reflective. Each painting functions like a visual proverb. In *A Coin in a Fish's Mouth*, the imagery references the Gospel story where Peter retrieves a coin from a fish to pay the temple tax. The boat labeled "Caesar / IRS" reflects the tension between divine provision and earthly systems of obligation. Across my work, symbols such as candles, birds, trees, tears, and fragmented city forms become a visual language for themes of faith, sacrifice, love, and spiritual resilience. Through bold color and graphic outlines, the compositions invite viewers to encounter the image quickly and reflect on the meaning behind its symbols.*



“Love Bomb Balm”

Jamal McCray

48"x48"

Acrylic, house paint, and oil pastel on canvas

\$5,000

Contact info@rtowngallery.com to collect.

WORDS FROM THE ARTISTS

Cait Elizabeth

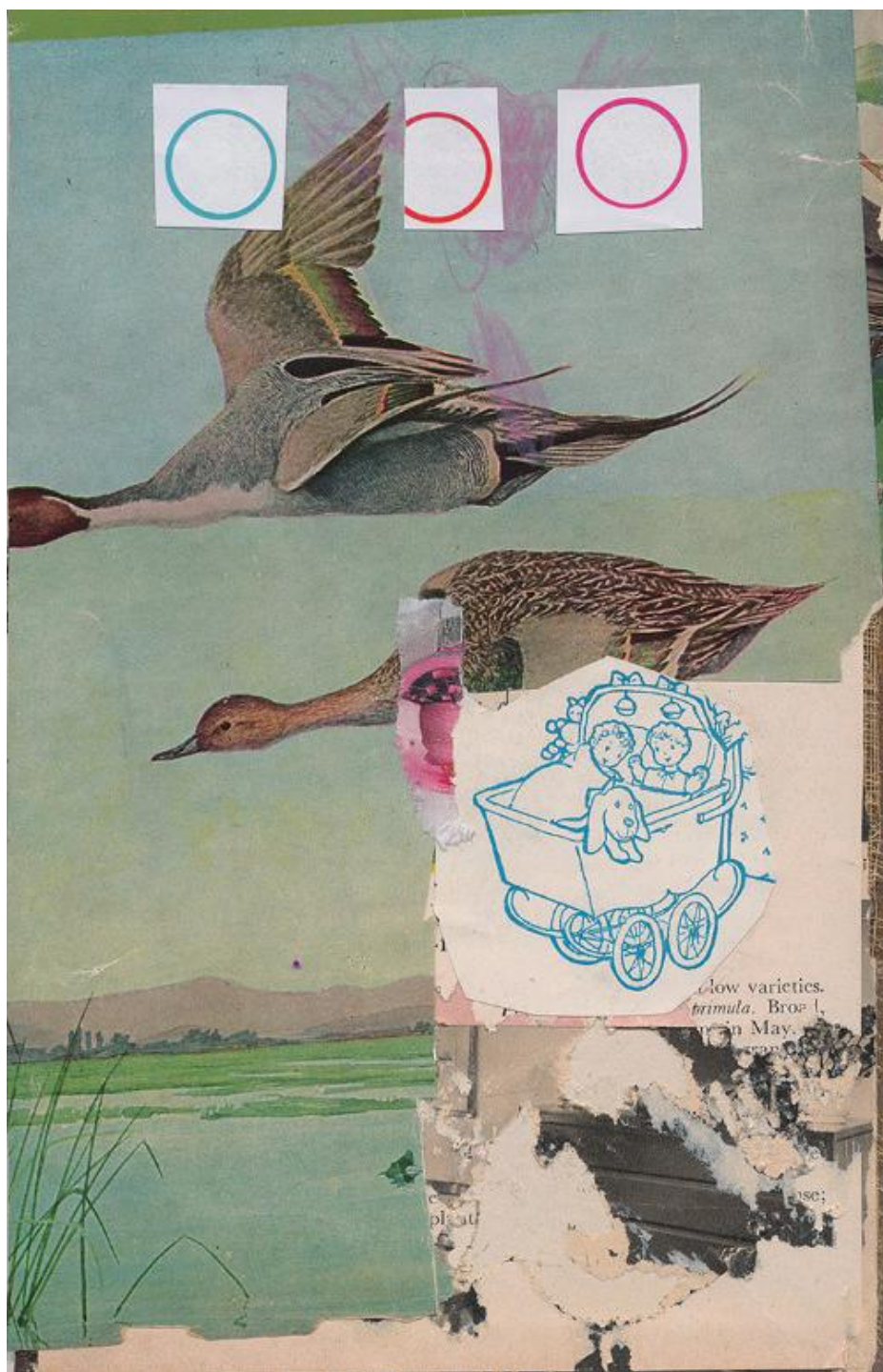
Cait is an analog collage artist whose work explores texture, composition, and the unexpected relationships between found imagery. Originally from England, she now lives and works in Texas, where her practice has continued to evolve through both local and international influences.

Drawing from vintage materials and printed ephemera, her collages often balance nostalgia with a contemporary sensibility, creating layered pieces that invite close looking and reinterpretation.

Her work has been featured in publications such as Wilder Magazine and Cut Me Up Magazine, and has been exhibited locally at The Eclectika and the Lewisville Grand Theater. Through her practice, Cait continues to experiment with visual storytelling, using the tactile nature of analog collage to create thoughtful, evocative compositions.

Statement:

My work focuses on chaos, emotions, and memory. I use vintage papers, layering, and fragmentation along with found language to reflect on how we are built, disrupted, and reassembled over time.



“Toothpaste”

Cait Elizabeth

9.5"x6.25"

Collage

\$150

Contact info@rtowngallery.com to collect.

WORDS FROM THE ARTISTS

Emme Landes

Emme Landes is a painter who draws inspiration from feminine identity and representations from her own experiences. Her practice exists in dialogue with feminist theory, while exploring the contrast between authenticity and social expectations of women. Her paintings delve into the lived experience and self-expression of women. Investigating the density of female experience, Landes often uses everyday objects that hold a deeper message within her artwork. Drawing on shared narrative and collective memory, her artwork represents female experiences that play into the presentation and expectations of women in society. Landes is from Little Rock, AR and graduated with honors from the University of Mississippi with a B.F.A. in Painting (2024). Her work has been featured in multiple regional shows and galleries even as she explores new styles, materials and concepts for her art. She continues to further her conceptual frameworks, while fostering conversations of identity and experience.

Statement:

My paintings confront the ways women are conditioned to mask individuality in favor of social acceptability. Raised in the heart of Southern culture in the United States, I am intimately familiar with how women are instructed to curate themselves into models of poise and perfection. My work engages with these ingrained lessons by examining the polished facade that encourages women to soften, contain, and refine themselves into idealized images based on society's expectations. My recent work takes the form of pillow-like canvases that are soft, bulging structures. The pillow operates as both a site of comfort and a mechanism of compression. It references domestic space and rest, while also suggesting suffocation, containment, and the shaping of the body. These forms hold tension: they invite touch and proximity, yet imply constraint. Working in oil, I create abstracted close-ups derived from earlier resin surfaces translating their glossy distortions of encapsulated items into paint.



"Red Willow"

Emme Landes

10"x10"

Resin, paint, found objects

\$250

Contact info@rtowngallery.com to collect.

WORDS FROM THE ARTISTS

Alan Siggers

Alan Siggers is an artist as well as a thriving home and commercial builder with more than 45 years' experience. Born in California in 1961, he lived in 7 states growing up as a Navy brat. In Texas, he met his wife, Valerie. They married in 1982, they have three children and reside in Granbury, TX. Academically, Alan studied Architecture beginning in 1980 at Boise State University and later at the University of Texas at Arlington. By 1995, he formed a successful company building and remodeling homes in the DFW area until 2012. During those years, his passion for art never subsided. Siggers collectively spent 34 years obtaining a degree in Art, finally earning his BFA in painting from University of Texas at Arlington in 2012 and a Master's in Interdisciplinary Studies from The Maryland Institute College of Art in 2014. After leaving MICA, he exhibited at several of the top galleries in DFW including Valley House and Craighead Green. He is a full time employee working

Statement:

In this recent body of work Arrangements, I set out to pursue something truly beautiful so, I chose something obvious but limitless: flowers. My research led me to a long history of the flower in art, but the thought process led me personally to the music behind it. Since I also write lyrics and make music, I think of the work as if it were a song. In joining a long tradition of flower painters, my attempt is to reimagine and create something original. I am using vibrant colors suspended in different contextual environments. I paint with extremely thick oil paint applied with unconventional methods. The process itself is fundamentally improvisational, akin to the fluid spontaneity of blues or jazz during an open jam session. The gesture of the hand can pluck the strings or brush the paint, strum a tune, or apply the colors. Methods and melodies converge generating not just paintings but Arrangements visual compositions somewhere between painting, sculpture and song.



“Arrangement #14”

Alan Siggers

48"x36"

Oil Paint

\$5,000

Contact info@rtowngallery.com to collect.

WORDS FROM THE ARTISTS

Nathan Basset

Nathan Basset is an up-and-coming lens based artist currently pursuing a degree in Studio Arts from the University of North Texas. Born a stone's throw away in Bedford, Texas, Nathan is heavily influenced by a childhood filled with family photobooks and point & shoot cameras. Unimpressed with the ever-invasive stride towards clinical sharpness found in modern cameras, a preference towards rediscovering past methods and technology returns an element of personality to his images.

Statement:

Death of the third place. The "third place" in American culture was a physical location to convene with friends and family. Someplace communal, open, bristling with activities. There are too many factors to blame for the death of these locations, with the fact of the matter being they are dwindling. For this reason, historic Grapevine is such an important aspect of my life. It is a last bastion of this piece of American culture. From Main Street to alleyways, no space avoids the lens.



“End of the Line”

Nathan Basset

16.3"x13.3"

Archival Print

\$250

Contact info@rtowngallery.com to collect.

WORDS FROM THE ARTISTS

Kame

Kame was born in Guanajuato, Mexico. At the age of 7, he migrated to Texas, United States, where he attended Texas Woman's University. Kame was always interested in creating and drawing for his friends and family, though his serious approach to art wouldn't come to fruition until his early 20s.

Statement:

In my art, I aim to reveal historic events related to political, socioeconomic and cultural phenomena that has shaped me and people like me such as black and brown people. Marcus Garvey said it best "when man becomes possessor over the knowledge of himself, he becomes master of his environments".



“Thoughts Under the Sky”

Kame

11"x15"

Pen on Paper

\$200

Contact info@rtowngallery.com to collect.

WORDS FROM THE ARTISTS

Christy Kaderly

Christina “Kade” Kaderly is a Texas-based mixed media artist whose work explores personal narrative, cultural symbolism, and the beauty within fragmented systems.

Working across painting and sculptural surfaces, Kaderly combines acrylic, oil, pastel, spray paint, and layered materials to build dimensional compositions that blur the boundary between painting and object. Her practice often pulls from visual languages of contemporary culture—graffiti, typography, pop imagery, and architectural forms—while also referencing deeper histories and personal identity. Influenced by artists such as Tony Cragg, Frank Stella, and Mark Bradford, Kaderly is drawn to surfaces that hold evidence of process: layering, disruption, repair, and reconstruction. Kaderly’s work frequently reflects on themes of connection, longing, and the structures that shape human experience—both emotional and societal. Symbols such as chains, architectural forms, and everyday cultural objects appear throughout her work

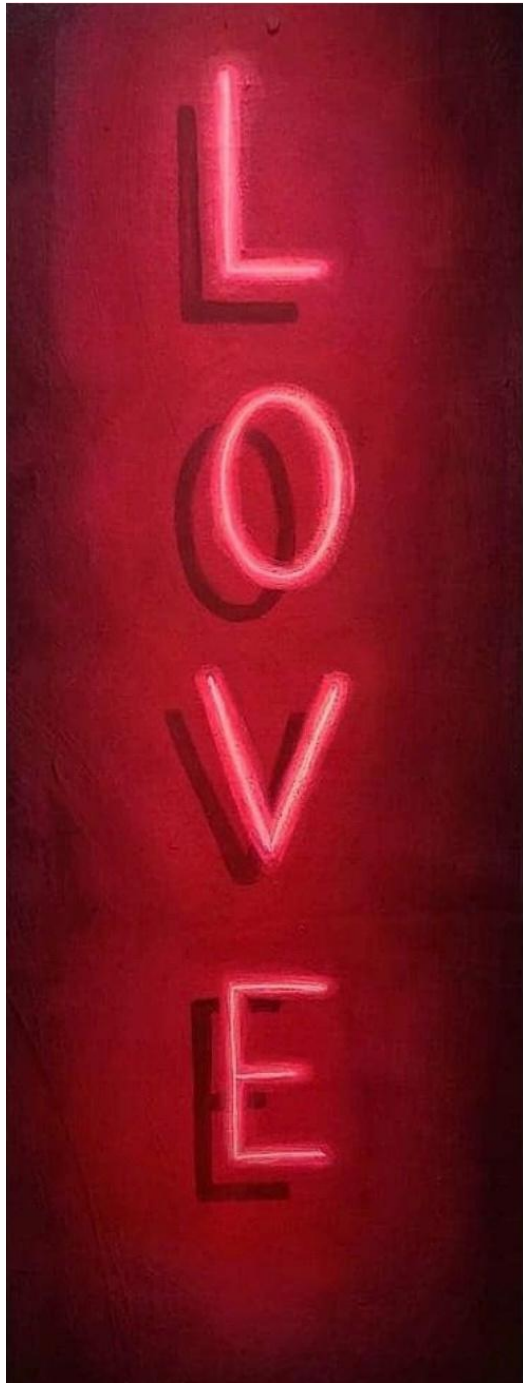
Statement:

Neon Love explores the electric intensity of attraction and the visual language of illuminated desire. Inspired by the glow of neon signage, the work captures the feeling of something bright, magnetic, and impossible to ignore.

Neon light has long been associated with nightlife, romance, and spectacle. In this painting, that luminous quality becomes a metaphor for emotional connection—radiant and captivating, yet delicate in its structure.

The vibrant color and glowing forms create a sense of energy and movement across the surface, reflecting the emotional charge that often accompanies love and longing. At the same time, the work hints at the fleeting nature of those moments, where intensity can fade as quickly as it appears.

Neon Love considers the tension between spectacle and sincerity in the way we experience attraction and connection.



"Neon Love"

Christy Kaderly

37"x13"

Acrylic on Canvas

\$550

Contact info@rtowngallery.com to collect.

WORDS FROM THE ARTISTS

Abbigail Spillane

Abbigail Spillane is a painter based in Dallas, Texas and is currently pursuing her MFA in Studio Art at the University of North Texas. She received her BFA from the University of North Texas, where she developed a practice centered on painting and printmaking.

Her work explores the relationships people form within everyday spaces, focusing on how atmosphere, memory, and proximity influence human interaction. Drawing from personal photographs and observed moments, her paintings examine how intimacy and quiet forms of codependency can develop through shared environments. Through expressive color and layered surfaces, she investigates how rooms, objects, and gestures shape the emotional exchanges between people and the spaces they inhabit.

Statement:

My paintings are built from a layered process that blends intuition with intention, shifting between instinctive mark-making and deliberate compositional decisions. Working with acrylic and oil, I build the surface with thick paint and bold color, allowing texture and color to push and pull across the painting. Rather than simply describing reality, color becomes a way of shaping space and atmosphere, with warm tones holding presence and cooler hues drifting into quieter parts of the composition. The imagery emerges where memory and observation blur, as familiar rooms and gestures begin to carry the weight of something unspoken. I am drawn to how people slowly form attachments to interactions, objects, and spaces, sometimes becoming quietly codependent on the routines that surround them and shape daily life. Domestic interiors and everyday objects become starting points for exploring the emotional residue that lingers within ordinary environments.



“Suspended in Blue”

Abbigail Spillane

Acrylic and Oil on Canvas

30"x24"

\$2,500

Contact info@rtowngallery.com to collect.

WORDS FROM THE ARTISTS

Madeline Dowd

Madeline Dowd studied at the University of North Texas receiving her BFA in Drawing and Painting. Her artwork juxtaposes a playfulness with underlying heavier subjects, sometimes hard to unpack. Finding a lightness through life's darker moments is something she is after. The work touches on the hopefulness in growth, change and transformation. Madeline has worked consistently to experiment and build her body of work. She previously worked at The Shamrock Hotel Art Studio in Dallas, Texas and at The Visual Arts Association Studio in Austin, Texas. She currently is between Dallas and Fort Worth focused on growing her body of work by showing up daily, dialing in ideas and experimenting along the way. She has shown work locally in group shows including: A House Gallery, Voertmans Gallery and at AVAA studio space. Her process is unique and free form, allowing the pieces to reveal themselves along the way.

Statement:

Madeline Dowd is a Texas based artist, currently making work surrounding transformation using vibrant imagery that represents the inner child, growth and healing. Switching off between acrylics, airbrushing and hand-building ceramics, Madeline showcases contrasting closeness with isolation and fear. The topics are heavy but are met with playful colors and imagery to make it feel light and optimistic. This body of work showcases a mix of ceramics that center around these topics, unpacking the idea of self, security and growth. These pieces are playful but at a deeper glance include layered topics that can be revealed in the layers of glaze, illustrative doodles and forms.



"Face Vessel"

Madeline Dowd

13"x12"

Ceramic

\$2,000

Contact info@rtowngallery.com to collect.

WORDS FROM THE ARTISTS

Joshua Sooter

Joshua Sooter is an artist and educator whose work explores movement, structure, and controlled chaos through drawing. He earned a B.F.A. in Visual Studies from Texas Tech University, a master's degree in Coaching Education from Ohio University, and is currently pursuing an M.A. at Northwestern Louisiana State University. His practice is informed by a rare dual perspective shaped by both the studio and the athletic field. For more than three decades, Sooter was involved in football as a player and coach, an experience that deeply influences his visual language. He serves as an art educator and advocate for visual arts education, working to expand opportunities for students. Sooter lives in Midlothian, Texas, with his wife and three children, whose support and presence ground and inspire both his teaching and studio practice.

Statement:

My work explores movement through the tension between realism and abstraction. I focus on moments of intense action where control and chaos exist at the same time. By combining carefully rendered figures with loose, gestural marks, I aim to capture not only what movement looks like, but what it feels like. Realistic forms ground the work in physical reality, while surrounding marks suggest the energy, rhythm, and force that cannot be contained through precise representation alone. These elements create an atmosphere of motion, allowing the image to shift between clarity and fragmentation. Ultimately, my work seeks to reveal the poetry within intensity, capturing fleeting moments where control is constantly negotiated against the force of motion.



“The Ride”

Joshua Sooter

44"x34"

Acrylic and Mixed Media

\$1,500

Contact info@rtowngallery.com to collect.

WORDS FROM THE ARTISTS

James-Ryan Cahalan

James Ryan Cahalan is a Filipino American artist and educator born in Manila, Philippines. Working across painting, drawing, sculpture, and installation, his art explores identity, memory, culture, and the human experience. His work often uses realism and symbolism to tell personal and emotional stories inspired by family, heritage, and lived experience. Alongside his studio practice, Cahalan is dedicated to education and community-centered artmaking, creating meaningful experiences that connect people through creativity, reflection, and design.

Statement:

Lure of Temptation explores desire, curiosity, and the tension between attraction and danger. In this piece, two goldfish are drawn toward a bright gummy worm used as bait, something playful, sweet, and familiar, yet tied to an unseen threat. The work reflects how temptation often appears harmless or appealing on the surface, even when consequences may follow. Through vivid color and glowing light, I wanted to create a sense of wonder while also revealing the risk hidden within what attracts us.



“The Lure of Temptation”

James-Ryan Cahalan

48"x24"

Oil on Canvas

\$2,800

Contact info@rtowngallery.com to collect.

WORDS FROM THE ARTISTS

Melinda Brown

Melinda Brown holds a Bachelor of Science in Graphic Design from Iowa State University and an Associate of Arts from the New England School of Photography. Her background in both design and photography informs a practice rooted in strong composition, narrative clarity, and visual sensitivity.

Brown has worked professionally as a studio manager for Lou Goodman Photography, contributing to small product campaigns for national advertisers. She later expanded her focus through her work with Melinda Brown Photography, where she has participated in nationally recognized equine art shows, publications, and commissioned projects.

In 2013, Brown became a gallery member at the Virginia Beach Art Center, where she remained active through 2025. Her recent explorations include ceramics under the name "Ava the Mud Pup," developed in 2024, alongside her membership at Dallas Makerspace.

Working across photography, design, and ceramics, Brown's practice reflects a continued interest in material, form, and storytelling across mediums.

Statement:

History sits at every corner of Texas. the places I travel to here leave certain impressions of the people and place. It is those people and places that I bring to the painted surfaces of my ceramics. Day on the Brazos- stoneware and glaze, self thrown.



"Day on the Brazos"

Melinda Brown

11" Diameter

Stoneware and Glaze

\$650

Contact info@rtowngallery.com to collect.

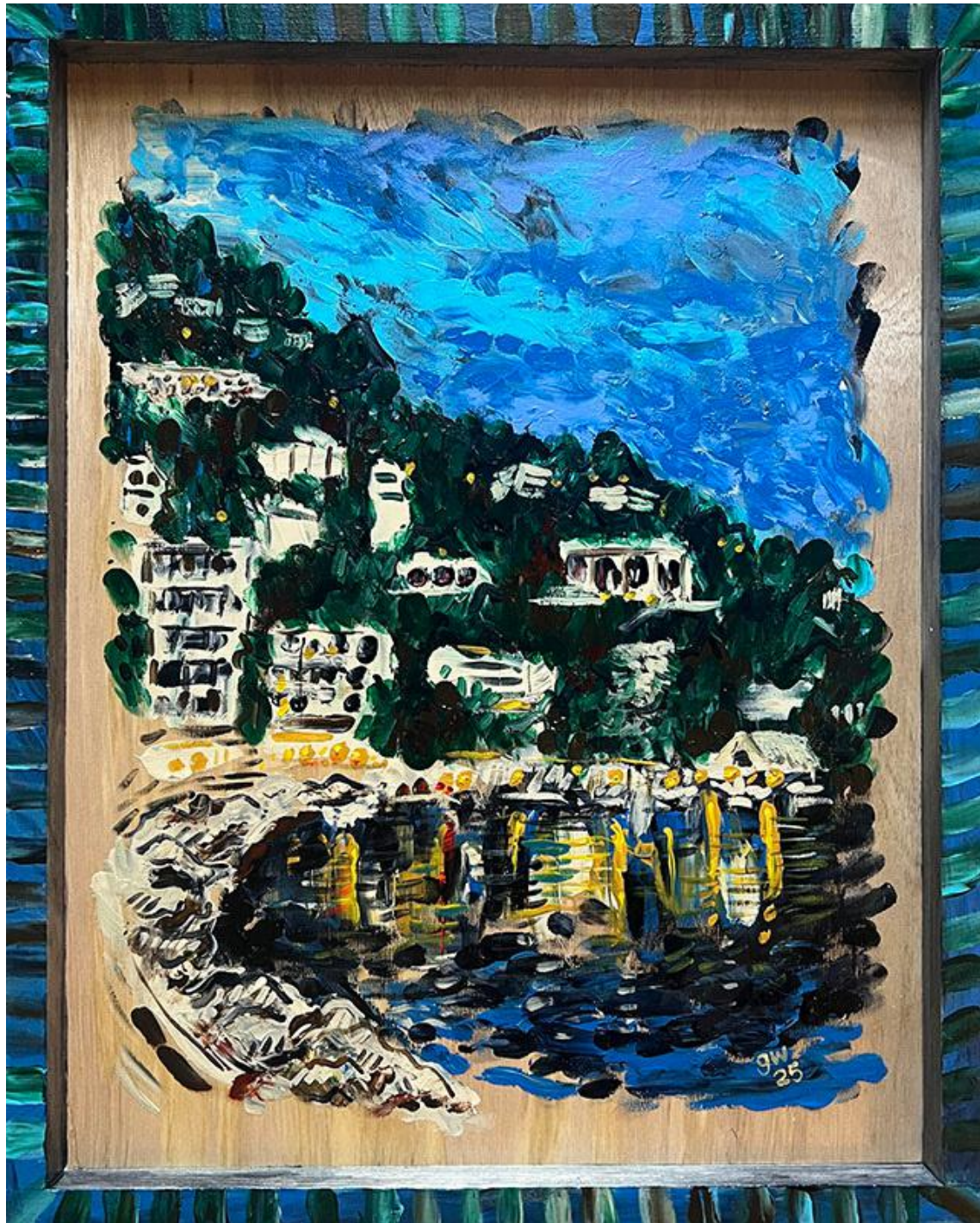
WORDS FROM THE ARTISTS

Grace Woodall

I am a Dallas-based artist that holds a BFA in Studio Art with a concentration in Photography and an MFA in Art Education. I spent four years teaching elementary students the foundations of art, fostering creativity and self-expression in young learners. My work has also been exhibited at ALG Fine Art in the design district. Much of my acrylic-based work explores themes of womanhood—being a daughter, a wife, a mother, and a friend. My upbringing in Texas and the ways I have evolved through each of these roles has deeply informed my perspective. I consider it a privilege to have lived through these seasons of life, each one shaping my voice as an artist. I believe every season holds its own beauty, even the darker spaces that challenge us and ultimately help us grow.

Statement:

Inspired by the poem “Experiments” by J. K. Kennedy, this piece reflects the innocence and freedom of childlike creativity. As a child, I spent hours at my parents’ worn coffee table cutting, gluing, and drawing without inhibition. My father, a cabinet maker until his passing in 2010, inspired the wooden frame surrounding the work. For this piece I began painting with brushes but soon set them aside, using only my fingers—recalling the joy of watching my young son finger-paint. Working wet-on-wet with my hands allowed a looser, more playful process than my usual precision-driven style. In the end, I returned to a small brush for final details, hoping this return to childlike creation brings viewers the same sense of joy.



“Fingers Crossed”

Grace Woodall

20"x16"

Acrylic on wood Panel

\$950

Contact info@rtowngallery.com to collect.

WORDS FROM THE ARTISTS

Charles James

My name Charles James. I've been an artists all my life. I started drawing and painting when I was very young, through elementary/high school/and college. Got a BFA from Louisiana Tech in 1989. I've had a 35+ year career as a professional graphic designer and in the last 5-6 years started painting and making art again returning to my childhood passion. My goal is always to paint the things I love, express my inner feelings, and make things that make people think. I use color and composition to draw the viewer in and hopefully make them feel a certain way. I enjoy seeing people looking at my art and creating their own stories on what the painting "means" to them. Weather I intended it or not. I've been involved in many shows and contests around the country and have won awards and sold many pieces. I sell my work and gift it to the people I love and who love it. It's definitely the most rewarding thing I have to offer myself and the people around me!

Statement:

The art I created for this show was made with pure passion and excitement as I use this practice as a kind of therapy for myself. After a long battle with alcohol addiction I have come out the other side as a more peaceful and compassionate person I believe. Art therapy and hard work has truly saved my life. I made the art as an expression of beauty and a search for my inner peace using color, composition, and a love for imperfection as I believe it connects us as human beings. Imperfection is human and sets us apart from the digital world we are in and heading towards. I want the viewer to get close, feel the texture, read meaning into the pieces that they feel is right for them. Art is what makes us human.



“Untethered”

Charles James

30"x40"

Acrylic paint

\$1,800

Contact info@rtowngallery.com to collect.

WORDS FROM THE ARTISTS

Matthew Jones

Matthew Jones is an adjunct professor with Tarrant County College. Originally from rural Ohio, Jones received his MFA from the University of Dallas. A current member of the Cedars Union Cohort 5, Jones' work has been exhibited both nationally and internationally at such institutions as: The Museum of Asian Texans, Dallas, Texas; The Museum of Encaustic Art, Cerrillos, New Mexico; Ruth Smith Gallery, North Tawton, Devon, England; Bayshore Community Centre, Owen Sound, Ontario, Canada; Manifest Gallery, Cincinnati, Ohio; and Cooperstown Art Association Gallery, Cooperstown, New York; Artspace 111, Fort Worth, Texas.

Statement:

My work explores the disconnect between our urban society and the natural world. To articulate this, I have frequently paired traditional compositions with found object supports. These materials allude to the negative aspects of our relationship - to the litter we leave behind, to our physical separation, and the barriers we erect. Recently I have been investigating our voyeuristic engagement with nature. Too often the only experience we have with these spaces that were spared the axe of progress is a fleeting glimpse seen from a screen. These places were protected so that humanity might meditate in their solitude, finding spiritual renewal in the heights and depths, yet we only seem interested in capturing proof that "we were here" before hurrying off to the next thing "worth seeing".



“Road Trip 3 - Palo Duro”

Matthew Jones

10.5"x20.5"

Encaustic, gouache, and tire tread

\$500

Contact info@rtowngallery.com to collect.

WORDS FROM THE ARTISTS

Gloria Lundin

Gloria Lundin is a ceramic artist based in Grapevine, TX, specializing in functional, whimsical, thrown/hand built/slipcast pottery. Her work explores the beauty of imperfection and the tactile experience of using pottery, with a focus on functional and interpretive art.

Statement:

My Granddaddy's ole battered truck, tired, and all worn out, parked in a field of memories.



“Granddaddy’s Old Truck”

Gloria Lundin

16"x12"x8.5"

Ceramic

\$1,200

Contact info@rtowngallery.com to collect.

WORDS FROM THE ARTISTS

Adriane McMillon

Born in Tucson, Arizona, she has journeyed through various cities before ultimately settling in Dallas. Her artistic roots began in childhood, where she spent countless hours drawing comics and cartoons. It wasn't until the age of 30 that she began painting, embarking on a self-taught exploration that has since grown into a central part of her practice.

Deeply inspired by the vibrant world around her, she often incorporates collage into her environment, tearing pages from magazines to build layered visual narratives that reflect the stories she values. Storytelling remains a driving force in her work, shaping both her process and subject matter.

Her influences are wide-ranging, drawing from music, film, anime, literature, television, and the energy of sound and culture. These elements intertwine to form a distinctive perspective, resulting in work that resonates with a broad and diverse audience.

Now in her forties, she continues to embrace art as a powerful medium for storytelling and inspiration, constantly evolving her voice and creative approach.

Statement:

As a multidisciplinary artist, I thrive on the intersection of craftsmanship and storytelling. My work emerges from a deep-seated passion for both woodwork and painting, allowing me to create custom art canvases that serve as unique foundations for my narratives. I believe that every piece of art tells a story, and I strive to weave inspiration into each creation. My process is driven by an innate desire to share experiences and emotions, inviting viewers to engage with the narratives I present. By blending traditional woodworking techniques with modern multimedia practices, I not only celebrate the materials but also honor the stories they can tell. Art is not just a skill for me; it is a calling. I am dedicated to inspiring others, encouraging them to explore their own creative paths and to see the beauty in the stories that surround us. Through my work, I hope to ignite a sense of wonder and connection, fostering a deeper appreciation for the art of storytelling in all its forms.



"Rooted"

Adriane McMillon

48"x48"

Acrylic Paint

\$3,500

Contact info@rtowngallery.com to collect.

WORDS FROM THE ARTISTS

Philip Samson

Phil Samson is a Denton-based artist who creates visual art to provoke innovation and intellectual exploration. His art is influenced by science, technology, engineering, mathematics, and medical research (STEMM). Phil interacts with research scientists at a Carnegie Tier 1 research university where he explores concepts that can be further stimulated by linking creative and analytical thinking. In 2022, Phil was the recipient of the International Sculpture Center's Outstanding Student Achievement in Contemporary Sculpture Award. Phil received his Master of Fine Arts degree from the University of North Texas in 2022.

Statement:

AA no 16: This wall sculpture is composed of numerous layers of poured latex and acrylic paint with incised and peeled surfaces revealing the first paint layer. By cutting and releasing sections of the paint skin, these works expose the accumulated history of its own making. These pieces become both painting and sculpture: a surface that has been opened, allowing the internal layers of color and material to extend beyond the picture plane and into the surrounding space. [to the] Stars: Imagining the iconic 1970s playground rocket ship with its simple geometric body and fins recalling the sturdy metal play structures found in mid-century parks and schoolyards. Rendered in translucent layers of color, the rocket appears almost spectral, as if emerging from memory rather than physical space. Rather than presenting the structure as a literal object, the painting dissolves it into strata of color and mark-making. The rocket becomes both a nostalgic artifact and a symbolic vessel.



"AA No. 16"

Philip Samson

44"x30"x2"

Acrylic Paint on Wood Panel

\$1,000

Contact info@rtowngallery.com to collect.