



**South Tipperary
Development CLG**

Invested In You And Your Community



2024

PROGRESS REPORT

Contact Details:

Head Office

Unit 2C, Carrigeen Commercial Park,
Clogheen Road,
Cahir,
Co. Tipperary.

Tel: 052 7442652

Email: info@stdc.ie

Website: www.stdc.ie

Company Registration No.: 449731

CHY No.: 18085

Registered Charity No.: 20068684



Comhlacht Forbairt
Thiobraid Árann Theas CTR

PRINTED ON RECYCLED PAPER



A word from our Chairperson

It is an honour to present the 2024 Progress Report of South Tipperary Development CLG (STDC), which outlines the organisation's continued commitment to fostering inclusive, sustainable communities across South Tipperary. Over the past year, STDC has engaged with over 200 communities, reflecting both the extent of our reach and the depth of our engagement.

A distinguishing feature of South Tipperary Development Company is our flexible, person-centred approach to our work which we apply to the wide range of services we deliver to individuals and communities. From social inclusion and rural development to enterprise and employment supports, wellbeing and outdoor activities; our integrated model allows us to meet the evolving needs of individuals while strengthening community connections. This approach is made possible by a highly skilled and dedicated team. I want to acknowledge the professionalism, adaptability, and compassion of our staff. Their responsiveness to an ever-changing policy landscape and complex community challenges is central to STDC's ability to catalyse positive change and foster thriving, inclusive and sustainable communities. Under the capable leadership of our CEO, Isabel Cambie, the organisation continues to demonstrate resilience, innovation and integrity in all aspects of its work.

We are very grateful to our funders, including the Department of Rural and Community Development, the Department of Social Protection, HSE and other key agencies whose financial and strategic support underpins our work.

STDC continues to be a valued partner who plays an active role on relevant boards, interagency structures and networks to co-create innovative solutions to multi-faceted issues. This partnership approach enables STDC to effectively mobilise resources to respond to evolving community needs and changing circumstances.

This year also brought about changes to the board of STDC. As per our Rotation Policy, a number of long-serving directors retired from the Board. All of our directors play a key role in steering the company's strategic direction and ensuring strong governance. Their deep commitment and valuable insights have shaped STDC into the trusted organisation it is today. I extend my sincere thanks to all of our Board members for their voluntary time and commitment they so generously give to the Board. As I conclude my own term as Chairperson, I do so with complete confidence in the ongoing strength of our Board. I am also delighted to welcome our new Chairperson, PJ Maher, who brings a wealth of experience and skills that will help guide STDC in the next chapter of its growth. With such strong governance and leadership in place, I am confident that STDC will continue to drive positive change and deliver lasting impact for communities across South Tipperary.

Simon Ryan

Chairperson



“As I step down as Chair, I am confident that with our strong staff team and Board, STDC will build on its sound foundation and continue to adapt to meet the changing needs of people in South Tipperary.



CEO Report

Welcome to the South Tipperary Development CLG (STDC) 2024 Annual Progress Report. This report highlights our work over the past year, showcasing the impacts we've made within communities across South Tipperary. Through delivering a wide range of programmes, we have remained committed to building sustainable communities, supporting individuals, families and businesses, as well as promoting inclusive development.

The local development landscape is undergoing significant shifts, driven by reduced funding streams, evolving national policy priorities and increasing demands for inclusive, community-led responses. Challenges such as integrating new communities, addressing social inequality and advancing climate goals are reshaping the scope of our local development work.

STDC is responding by aligning our strategy with these emerging priorities. A major milestone in 2024 was the launch of our Strategic Plan 2024–2028, developed through extensive consultation with communities and partners. This plan focuses on five key pillars: Strengthening Communities, Empowering People, Protecting the Environment, Supporting Others and Developing STDC. It reflects our commitment to driving meaningful, sustainable change across South Tipperary.

This year saw important programme developments. We successfully rolled out Year One of the Social Inclusion and Community Activation Programme (SICAP) 2024–2028, continuing our focus on supporting disadvantaged individuals through one-to-one engagements, training and employment supports and community development. We launched the LEADER Programme at Cabragh Wetlands, with Jack Kennedy, Editor of the Farmers Journal as keynote speaker. Essential funding is now making its way to support rural businesses and communities.


Through expanding the Walks Scheme and securing Outdoor Recreation funding, we enhanced access to Tipperary's countryside for residents and visitors alike.

Our Local Area Employment Services grew significantly, adding new staff to support jobseekers, while the Traveller Health Care Project strengthened its outreach to Traveller communities. Meanwhile, the Rural Social Scheme (RSS) and Tús Programme continued to deliver vital work placements, building individual skills and community resilience.

Alongside these successes, 2024 also brought challenges, including the difficult decision to close our Early Years Service. However, through resilience, collaboration, and a clear focus on community needs, STDC has continued to adapt and deliver critical services where they are needed most.

Our achievements are made possible by the dedication of our staff, the trust of our funders, and the commitment of our voluntary Board. I particularly wish to acknowledge Board members Pat O'Brien, Carmel Troy, P.J. English, and Fiona Kennedy, who retired this year as part of our Rotation Policy. We are very grateful for their service, voluntary contributions and guidance.

I would also like to thank Simon Ryan, who stepped down as Chairperson in 2024. Simon gave generously of his time and provided steady leadership during a period of change for STDC. His clear thinking, practical approach, and willingness to take on difficult decisions were of real value to the organisation. We are very grateful for his contribution and wish him well for the future.



Isabel Cambie

CEO



“Looking back on 2024, we can be very proud of the impacts we have made across the whole of South Tipperary, empowering people, strengthening communities, and delivering meaningful support where it's needed most.”

About Us

South Tipperary Development CLG (STDC) is a Community Led Local Development Company. It is a not-for-profit registered charity overseen by a voluntary board of directors representing community, farming, business and state agency sectors.

South Tipperary Development CLG supports communities, individuals, families, and small businesses in South Tipperary (Clonmel Borough District, Tipperary Cahir, Cashel Municipal District and the Carrick-on-Suir Municipal District).

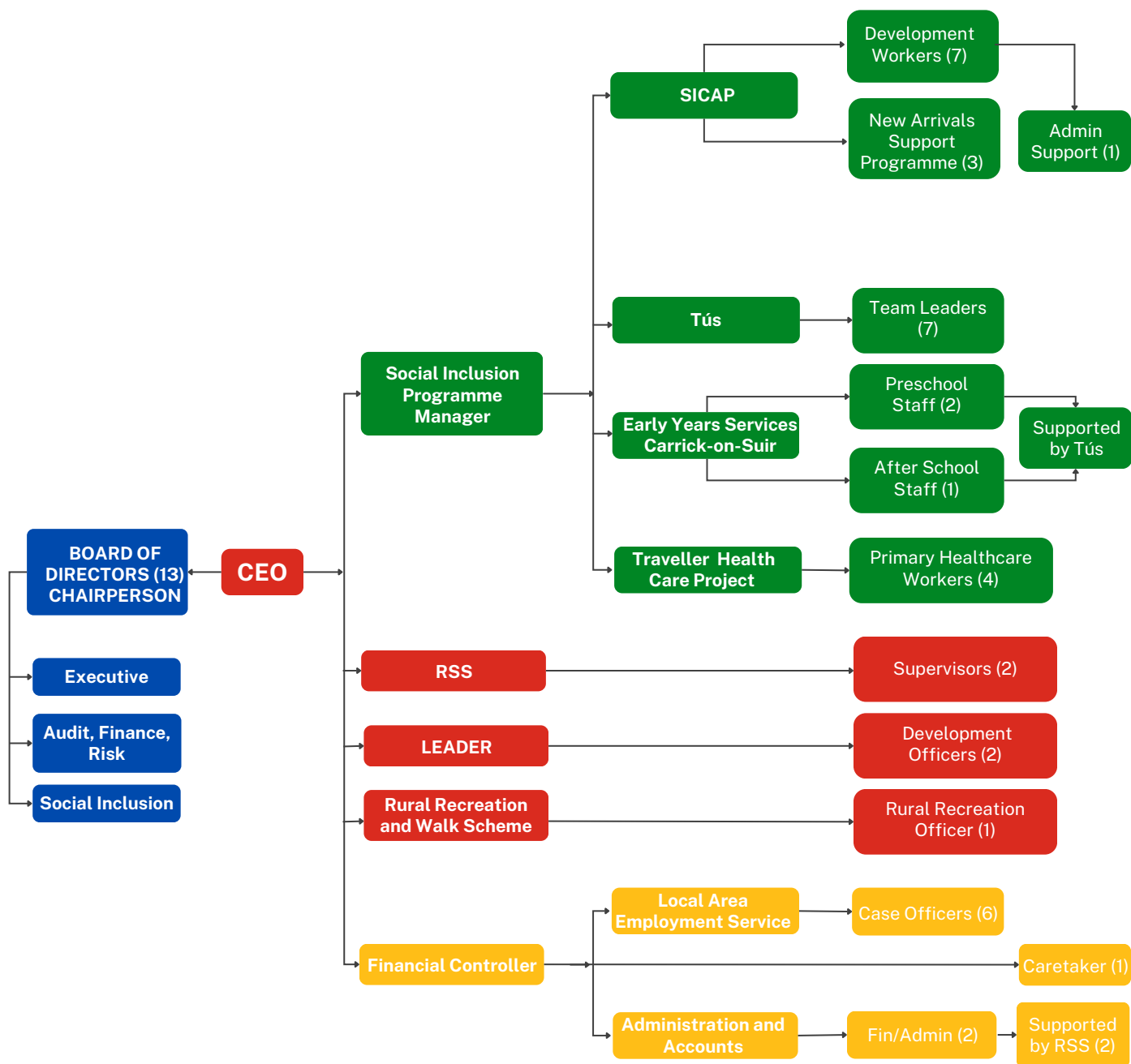
South Tipperary Development CLG managed the following Programmes and Services in 2024:

- Early Years Services (The programme was closed at the end of the 23/24 school year.)
- LEADER Programme
- Local Area Employment Services (LAES)
- New Arrivals Support Programme
- Rural Recreation and Walks Scheme (RR)
- Rural Social Scheme (RSS)
- Social Inclusion and Community Activation Programme (SICAP)
- Traveller Health Care Project (THCP)
- Tús (Community Work Placement Initiative)



SOME OF STDC STAFF TEAM

Company Structure



South Tipperary
Development CLG



Our Vision

To be a catalyst for positive change, fostering a thriving, inclusive, and sustainable South Tipperary so that our environment is protected and where every individual and community can reach their full potential.

Leading the way, STDC supports, empowers and provides resources to individuals, local groups and enterprises through the delivery of publicly funded programmes. We are invested in people and their communities, responding flexibly to needs and challenges, facilitating sustainable development, thereby enhancing the quality of life in South Tipperary.

Our Mission

Sustainable Development Goals

Throughout all our work we are informed by and seek to contribute to the Sustainable Development Goals





Our Directors

Our Board operates with transparency and accountability, ensuring the highest standards of governance and ethical conduct. We actively engage in strategic planning sessions, evaluate initiatives, and provide invaluable guidance to our dedicated team, fostering an environment of innovation and impact-driven actions.



Simon Ryan
Chairperson



P.J. English
Vice Chairperson



Carmel Troy
Secretary



P.J. Maher



Lavinia English



Sean Cooney



Kevin Ryan



Pat O'Brien



Fiona Kennedy



Maureen Fahey



Emer Leahy



Marion O'Neill

Our Outcomes

2024



€1.9M

Funding Directly Invested
in South Tipperary



€2.7M

Additional Funding
Leveraged



1619

Individuals Received
One-to-One Support



201

Community and Voluntary
Groups Supported



72

Jobs Created and Sustained



59

Businesses Supported (Start-
ups, Existing and Social
Enterprises)



143

Individuals Supported into
Employment, Self Employment



1013

Individuals Supported into
Education, Training Life Long
Learning



545

Voluntary Hours Given
by the Board & LEADER
Evaluation Committee



178,000

Hours Spent by Tús & RSS
Participants Working in the
Community

Our Funders and Partners



Rialtas
na hÉireann
Government
of Ireland

Tionscadal Éireann
Project Ireland
2040



An Roinn Coimirce Sóisialaí
Department of Social Protection



An Roinn Forbartha
Tuaithe agus Pobail
Department of Rural and
Community Development



An Roinn Leanaí, Combhionannais,
Míchumais, Lánpháirtíochta agus Óige
Department of Children, Equality,
Disability, Integration and Youth



Có-mhaoinithe ag an
Aontas Eorpach

Co-funded by the
European Union



pobal

government supporting communities



Comite um Fhorbairt Pobail Áitiúil
Thiobraid Árann
Tipperary Local Community Development
Committee



WATERFORD AREA
PARTNERSHIP CLG



North Tipperary
Development Company



Comhpháirtíocht Leader
Phort Láirge Waterford Leader
Partnership



Partner



An Ghníomhaireacht um
Leanaí agus an Teaghlach
Child and Family Agency



Bord Oideachais & Oiliúna Thiobraid Árann
Tipperary Education & Training Board



KNOCKANRAWLEY
Resource Centre CLG



Comhairle Contae Thiobraid Árann
Tipperary County Council



Local
Development
Companies
Network
Collective Vision, Fairer Society.



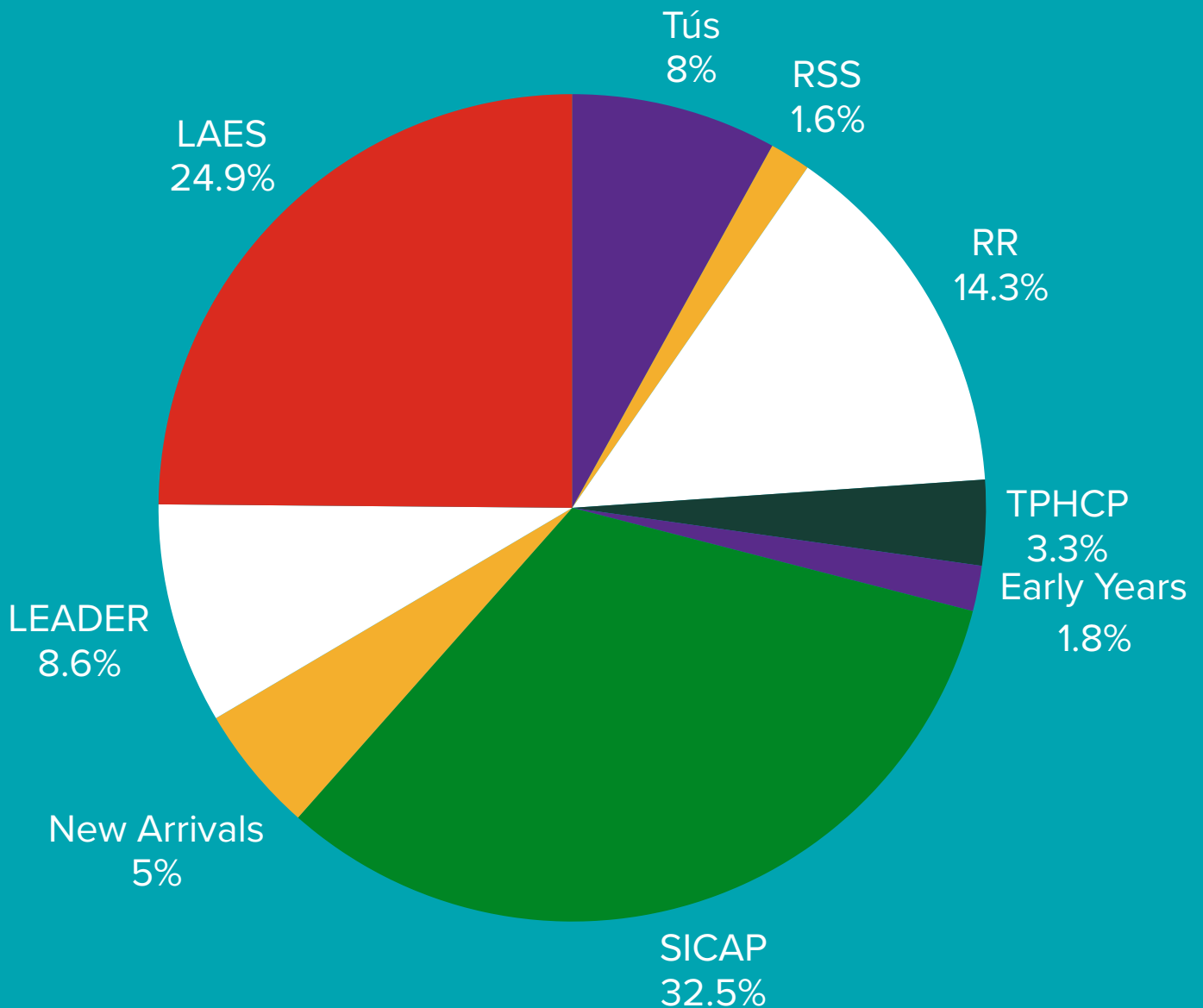
Tipperary
Volunteer Centre
Ionad d'Obair Dheonach Thiobraid Árann



Public Participation
Network Tipperary

Income 2024

By Programme



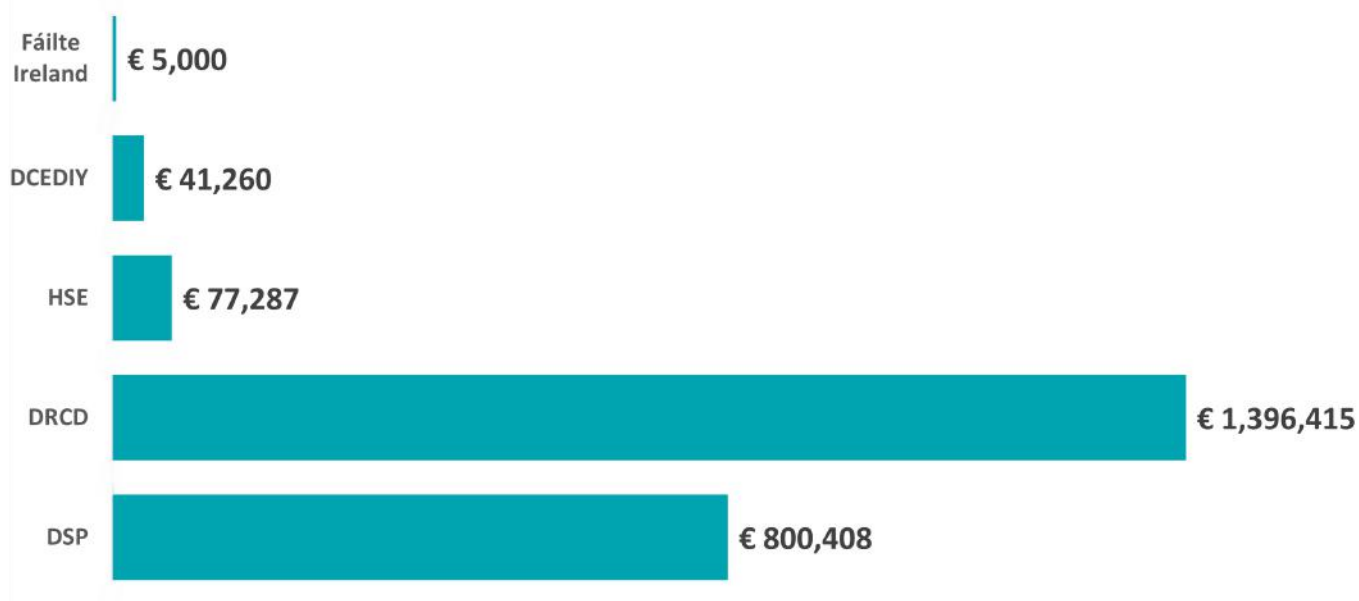
GOVERNANCE

STDC's Board continues to operate with a strong commitment to effective leadership, accountability, and transparency. Robust systems and procedures are in place to ensure the organisation is governed responsibly and efficiently. In 2024, the Board convened for 7 meetings, during which key strategic, operational, and compliance matters were reviewed and progressed. The Board remains fully compliant with the Charities Governance Code, reflecting its dedication to maintaining high standards of governance and oversight.



Funding by Government Body

2024



How funding supported local
development **ACTIVITIES**

**DIRECT PROGRAMME
DELIVERY**

€ 1.9M

**GENERAL
OVERHEADS**

€457K

Strategic Plan 2024-2028

Our Strategic Plan 2024-2028 was launched in September 2024, following a comprehensive consultation process, engaging clients, communities, funders, partners, the Board, and staff. It defines our key priorities and encompasses our key values. It will provide direction for the coming years, ensuring adaptability while remaining committed to our mission of supporting local groups, individuals, and enterprises through publicly funded programs. The full plan is available on our website.

Our Priorities



Strengthen Communities

Communities across South Tipperary will be empowered and resourced to respond to their economic, social, cultural and environmental development needs and will be involved in decision making that impacts on them.



Empower People

Our clients will be supported to identify and follow pathways to reach their potential including enhanced wellbeing, education, training, employment and self-employment. We focus primarily on people who face challenges and are at risk of exclusion.



Protect the Environment

Individuals, Communities and Enterprises we work with will have increased motivation, knowledge and resources to embed effective climate action, mitigation and biodiversity initiatives into their activities, leading to the safeguarding of South Tipperary's environment for future generations.



Work with Others

We will work in partnership with relevant stakeholders at local, regional and national levels for the benefit of our clients and communities.



Develop our Company

Led by a dynamic Board, STDC will uphold the highest standards of governance and compliance. Through our skilled staff team, we will innovate and continuously improve, grow and diversify the services we deliver.

Funded by the EU and the Department of Rural & Community Development

The LEADER Programme in South Tipperary is delivered by South Tipperary Development Company (STDC) in partnership with the Local Community Development Committee (LCDC). Based on the EU's Community-Led Local Development (CLLD) approach, it supports rural communities to identify local needs and access funding for practical projects. LEADER focuses on three key themes: Economic Development and Job Creation (e.g. rural tourism, social enterprises, local food), Social Inclusion (e.g. youth services, supports for older people), and Rural Environment (e.g. biodiversity projects, water and energy conservation). STDC works with individuals, groups and small businesses to bring these projects to life.

Our Outcomes 2024

- New 2023-2027 LEADER Programme launched and new Independent Evaluation Committee appointed
- €198k approved for new LEADER projects
- LEADER Programme 2014-2023 completed successfully with 129 projects grant aided with €6.2 million
- €737k paid in claims to 25 Project Promoters in 2024



New LEADER 2023-2027 Programme launch

Tipp Mid West Radio keeping people connected

Tipp Mid West Radio is a community radio station serving Tipperary, Cashel and surrounding areas in Co. Tipperary and to a wider global audience online. It is a great example of a social and community enterprise led by volunteers that supports all communities, business and services in the area. The station, with its extensive and varied range of programming, aims to “inform, educate and entertain” and has been providing a vital social, cultural and economic service for the past 35 years.

With the help from a grant from LEADER, the Community Radio Station purchased and installed a new Operating Desk for one of their studios at St Michael Street in Tipp Town along with a new Outside Broadcast (OB) Unit allowing the presenters to go out into the community and bring the station to the people. Pictured below are the team preparing to present the live results from the General Election using the new equipment.



“The Outside Broadcast Unit was used for the full count in the recent General Election and the listeners at home were delighted to be brought to the centre of the action.” – Ann Power, Tipp Mid West Radio

Grange Lighting the way



“The lighting for the Grange Walkway has been one of our most important community projects both socially and for the promotion of health and wellbeing.”
– **Tomas O’Slatara, GDA**

Grange Development Association (GDA) purchased and developed the Grange Community Field in 2003 . It provides the local area with a much-needed recreational space, hosting soccer matches, GAA training, running and other activities.

In 2019, GDA further enhanced the field by adding a walkway. Eager to make this new feature more accessible and usable throughout the year, the GDA applied to the LEADER programme for support to light the walkway with energy efficient LED lights, and to install electricity in the containers they were using for storage and dressing rooms.

On Lá Féile Bríde 2024, the long-awaited switch-on ceremony took place, celebrating this new chapter for Grange Community Field. Since then, the walkway lights have been illuminating the path, allowing activities to continue through the dark winter months.

Congratulations to the dedicated GDA committee whose hard work and vision has created a lasting impact on the entire community.



Local Area Employment Service



Funded by Department of Social Protection

The Local Area Employment Services (LAES) is funded by the Department of Social Protection (DSP). It is a joint project across South Tipperary and Waterford in partnership with Waterford Leader Partnership and Waterford Area Partnership. The service works with long term unemployed clients who are farthest from the labour market and who experience barriers to labour market participation.

People in receipt of Job-seekers payments are referred to the LAES by the DSP and we work with each client to support and assist them towards gaining employment. Our caseworkers provide a supportive and friendly service to assist individuals in their journey towards employment. We offer specialised job search services and skills including tailored CVs, career guidance, information and training, education options, assistance in job applications and interview skills and support. The service is personalised to suit each person's needs.

Our Outcomes 2024

- 647 clients were engaged in the service
- 594 Personal Progression Plans were prepared for clients
- 33 clients sustained jobs for more than 17 weeks
- 52 Weekly Jobs & Training Packs issued, providing tailored job and training opportunities
- Received an overall satisfaction rating of 4.4 out of 5, with 98% positive feedback on caseworker support



Weekly Jobs & Training Pack



Our caseworkers at the Intreo Jobs Fair

A Fresh Start: How LAES Helped One Client Rebuild Her Future

At LAES, we see firsthand how the right support can help individuals overcome barriers and regain stability. A young woman came to us in a difficult situation; Amy was homeless, couch-surfing at a friend's house, and feeling stuck despite being well-educated.

Her LAES caseworker, John, took the time to understand her challenges and helped rebuild her confidence. Together, they identified an employment scheme that matched her skills, an administrative role with the local Men's Development Network. John refined her CV, conducted mock interviews, and coached Amy to present herself professionally at interview.

Her preparation paid off and she secured the role and quickly became a valued team member. The job gave her renewed purpose, and with her manager's support, she found stable housing.

This success story highlights the life-changing impact of employment schemes and guidance. With John's help, Amy is now on the path to long-term stability, proving that a fresh start is always possible.



"Being accepted into the Mens Development Network has helped to give me my confidence back, stabilise a rough time in my life and given me the opportunity and drive to up-skill." – **Amy, LAES client**

From Uncertainty to Opportunity: How I Found My Path



"Now, I love my job, and look forward to work every day. Emma and Gary still check in, always going the extra mile." – **Atlanta, LAES client**

When Atlanta was referred to LAES for employment support, she wasn't sure what to expect. But with the guidance of her caseworker, Emma, and Tús Team Leader, Gary, she quickly found a path forward.

"I can't thank Emma and Gary enough for their kindness and patience throughout this journey," Atlanta recalls. "Emma was incredibly supportive, she took the time to listen, explain my options, and introduce me to schemes available such as Tús and CE. When I showed interest, she immediately connected me with Gary, and by the next day, we had an in-person meeting."

Within a week, Atlanta secured an interview with Waterford Chamber. With Emma and Gary's support, she prepared for the opportunity and successfully signed her contract.

OUR IMPACT ACROSS



Map of the Waterford area showing the number of people in various towns and regions. The map includes labels for towns like North Tipperary*, Killenaule, Drangan, Mullinahone, Grangemockler, Fethard, Cloneen, Lisronagh, Ballyneale, Kilsheelan, Carrick-on-Suir, Clonmel, Ballyclerahan, Graigue, Rosegreen, Cashel, Dualla, Boherlahan, Commons, Ballingarry, Ardfeinan, Newcastle, and Waterford area**. Each location is marked with a purple pin containing a number, and some locations have additional orange and green pins with numbers. The map is set against a teal background representing water.

Location	Number of People (Purple Pin)	Other Numbers (Orange/Green Pins)
North Tipperary*	128	10, 1
Commons	1	2
Ballingarry	1	
Mullinahone	1	1
Grangemockler	8	3
Fethard	47	6, 3
Cloneen	3	1
Lisronagh	2	1
Ballyneale	1	1
Kilsheelan	10	2, 1
Carrick-on-Suir	163	13, 6
Clonmel	35	8
Ballyclerahan	4	2
Graigue	8	1
Rosegreen	11	1
Cashel	10	5
Dualla	3	1
Boherlahan	3	1
Waterford area**	261	

Waterford area is included as it falls under the Local Area Employment Services (LAES) which covers South Tipperary and Waterford area.

Please note that in the interest of clarity, locations are approximate and could have been combined

New Arrivals Support Programme



Funded by the Department of Rural and Community Development

The New Arrivals Support Programme funded under SICAP programme provides targeted assistance to individuals and families who have recently arrived in South Tipperary from other countries, including those seeking protection or resettlement. The programme supports their transition into Irish society by addressing key needs such as healthcare, education, employment, housing, and community integration. Through tailored supports and locally organised events, the initiative fosters a welcoming, inclusive environment, helping people to build secure and independent lives in Ireland.

Our Outcomes 2024

- Hosted 8 Integration events across South Tipperary
- 300 people engaged in 1,258 hours of training and education courses on subjects such as climate action, employment readiness, language support, health and wellbeing
- Integration survey carried out with Ukrainian community (181 responses)
- Secured additional €14,750 funding from Community Integration and International Protection Integration Funds for employment readiness and integration centred courses



Members of our team at the Ukraine Forum in Dublin, pictured with Her Excellency, Ambassador Gerasko



At the Welcoming New Communities event with Minister Joe O'Brien

Fostering Unity Through Culture

This year, STDC co-organised the first Irish Ukrainian Christmas celebration in Cahir, in partnership with the Cahir Development Association, marking the beginning of a new tradition.

The event brought together families and neighbours, celebrating both Irish and Ukrainian cultures. Attendees participated in creative craft workshops, enjoyed traditional cuisines, and admired festive decorations that enhanced the holiday spirit. Live music performances added to the joyful atmosphere, bringing the community together through shared cultural experiences.

Supported by Tipperary County Council, this initiative highlighted the power of collaboration and community spirit. The event strengthened cultural connections and provided a meaningful space for unity and celebration. STDC remains committed to fostering inclusivity and cultural appreciation, looking forward to more opportunities that celebrate diversity and bring communities together.



"This celebration showed that no matter where we come from, we can find joy in shared traditions and community." – **Mykola**

Empowering New Arrivals to build a brighter future



"I'm so happy to have found my first job in Ireland. I now believe I can build a life here." – **Taiwo**

At Bridgewater House in Carrick-on-Suir, the STDC SICAP team runs a weekly clinic that provides confidential and one on one supports to individuals seeking protection in Ireland. For many, like Taiwo and Arthur who arrived in 2023, this support became a turning point in their lives.

Eager to work but unsure where to begin, the two men connected with SICAP's Development Workers. Together, they explored job options, built CVs, and sharpened their job-hunting skills. During the process, they noticed a local demand for qualified security personnel.

With encouragement from SICAP and support from Tipperary ETB, they enrolled in PSA-accredited security training. But when the cost of the licence became an obstacle, a SICAP grant helped cover the gap, ensuring they could complete the course.

Now working in the security sector, Taiwo and Arthur are not only earning an income, but also finding stability and confidence as they settle into their new community.



Rural Recreation and Walks Scheme



**Rural
Recreation
Officer**

Funded by Department of Rural and Community Development and Fáilte Ireland

Since 2008, STDC has delivered the Walks Scheme in County Tipperary through its Rural Recreation Officer (RRO). The work of the RRO is guided by the strategic values of the “Embracing Ireland’s Outdoors 2023–2027” strategy. With funding from the Department of Rural and Community Development such as the Walks Scheme, ORIS, and the Walks Scheme Development Fund, the RRO ensures the ongoing maintenance of trails, fosters strong relationships with landowners, and supports communities to develop and enhance local walks. This work underpins national priorities for rural development and outdoor recreation, demonstrating the impact of targeted investment and coordinated local action in sustaining high-quality recreational infrastructure.

Our Outcomes 2024

- 12 Walks Schemes managed and monitored in 2024. 2 new trails will join the scheme in Q1 2025
- 174 landowners received a combined payment of approximately €224,000 excluding general maintenance costs
- 2 walking trails received funding under the Outdoor Recreation Infrastructure Scheme with a total value of almost €60,000
- 4 Walks received funding under the Walks Scheme Development fund WSDF to a total value of €36,627



Some of STDC staff on a walk in Littleton Labyrinth

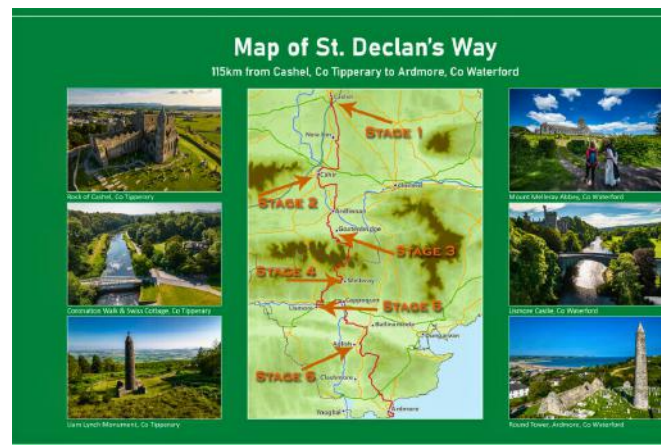
St Declan's Way: Reviving the Path, Reconnecting the Past

St Declan's Way, known as the Irish Camino, stretches from the Rock of Cashel in South Tipperary to Ardmore in County Waterford. The route passes through Cahir, New Inn, Ardfinnan and Goatenbridge traversing the Knockmealdown mountains into County Waterford. This ancient pilgrim route has seen a steady revival in recent years, as interest in heritage walking trails has grown. South Tipperary Development CLG (STDC) is proud to support its redevelopment in partnership with the St Declan's Way Committee, Waterford Leader Partnership, and local authorities.

The inclusion of St Declan's Way in the national Walks Scheme in 2023 was an important step forward. The Walks Scheme supports landowners whose lands host walking trails, helping to maintain routes. It also creates opportunities to bring more of the trail off-road, improving the walking experience while respecting working farmland.



"I really love to see people out and about enjoying the great outdoors and it is lovely to see others enjoy the countryside, as I do every day." –
Clare, local resident



During 2024, a fantastic new re-route has been added at Loughkent, New Inn involving the development of a new off-road section which was funded by the Walks Scheme Development Fund. Meticulous planning and a sensitive use of existing terrain ensured that the project was delivered within budget and without any loss of productive farmland.

This development was carried out with the kind permission of the landowner, Clare Ryan who has been hugely supportive of this project since the start. A strip of land at the edge of the field, adjacent to the hedgerows was striped back, the ground levelled, and gravel surfacing added where necessary offering walkers a more comfortable and scenic experience. This reroute is a welcome addition to the annual Knockmealdown Active St Declan's Way Pilgrimage Walking event, treating walkers to a beautiful oasis of lush countryside.

STDC is committed to supporting initiatives like this that celebrate our landscape, nature and biodiversity, respect our history, whilst bringing economic and social benefits to rural areas and thereby helping communities reach their full potential.

Funded by Department of Social Protection

The Rural Social Scheme (RSS) is an income support initiative to provide part-time employment opportunities in community and voluntary organisations for farmers in receipt of certain social welfare payments. Participants on the RSS work 19.5 hours per week which can be flexible to accommodate the participants' farming responsibilities. The work undertaken on the RSS is varied and is to support local community, voluntary and not-for-profit organisations. This can include maintaining community and sporting facilities, supporting tidy towns, working in community cafes and charity shops, providing administrative support to community and voluntary groups, social care and support of the elderly.

Our Outcomes 2024

- 35 community groups benefited from 30,000 hours of support provided by RSS participants.
- €9,000 from the materials grant was instrumental in enabling key community projects with limited resources to proceed, ensuring their successful implementation.
- Participants received training relevant to their roles e.g. Manual Handling, Small Engine Maintenance.
- Participants reported that they have gained new skills, had a greater sense of purpose and enjoyed the banter with other participants



RSS participants carrying out maintenance work at Inch Field in Cahir



RSS participant working on the Lattin GAA Pitch

Grounded in Purpose: Liam's Legacy at Dundrum Field

The Rural Social Scheme in Action at Knockavilla-Donaskeigh Kickhams GAA.

Liam Ryan has been a participant in the Rural Social Scheme (RSS) for 17 years. His role at Knockavilla-Donaskeigh Kickhams GAA Club focuses on grounds maintenance, helping to keep the facilities in excellent condition. Due to the club's central location, it is a busy venue, used not only by the club itself but also by schools, colleges, and local teams, as well as for divisional championships, camogie, and ladies football. Liam's work plays an important part in the smooth running of the club, with users regularly commenting on the high standard of the grounds.

The RSS brings clear benefits to both Liam and the club. His commitment and experience provide reliable, year-round support to a much-used community space. In return, Liam values the structure, social interaction, and visible impact of his work. The Rural Social Scheme allows him to stay connected to his community in a meaningful way, supporting local activity and taking pride in what he helps maintain.



"I love to get out and work in such a lovely community setting. I enjoy the flexibility that the RSS allows and the interaction with those that I meet with at the club. It's a great break away from the solitude of farmwork." - **Liam, RSS participant**

Rural Social Scheme Support at Tipperary Community Services Centre



"Thanks to the Rural Social Scheme, we're able to maintain a welcoming and reliable space for the community every single day." - **Brian English, Centre Manager**

Tipperary Community Services Centre in Tipperary town has long served as a vital hub, offering essential supports such as Meals on Wheels, a community restaurant, the Senior Alert Scheme, and the Food Cloud. Over the years, the Rural Social Scheme (RSS) has played a crucial role in sustaining these services. The Centre's continued success is in no small part due to the dedicated work of RSS participants, who bring valuable skills and commitment. Martina Donovan, a long-term RSS participant, is an integral team member. Her work in administration, HACCP compliance, and customer service ensures the smooth daily running of service. The consistent presence of RSS participants allows the Centre to plan and deliver services with confidence, even as community needs evolve.

Our work with Tipperary Community Services clearly demonstrates the vital role the Rural Social Scheme plays in supporting community and voluntary organisations, by providing reliable personnel who help maintain essential local services.



Social Inclusion and Community Activation Programme



Funded by Department of Rural and Community Development

The Social Inclusion and Community Activation Programme (SICAP) is an initiative designed to work with socio economically disadvantaged individuals and communities. SICAP offers a range of services to eligible individuals including training, employment supports, and other help with starting a business. As part of our work on SICAP, we aim to promote social inclusion and equality and give people the skills and confidence they need to improve their situation. SICAP also works directly with local communities, helping them to identify their specific needs and challenges. In conjunction with the community, it then provides support tailored to address these needs. SICAP is about giving people and communities the tools and support they need to overcome barriers and build better futures for themselves.

Our Outcomes 2024

- 38 communities, including 7 Social Enterprises supported
- 487 individuals supported
- 192 individuals participated in Accredited, Industry Certified or Unaccredited training
- 90 individuals progressed into employment, self employment or into a volunteer or work placement
- 137 individuals were referred to other services to address individuals needs



“International Women’s Day. Inspire inclusion” event



Signing Service Level Agreements with Tipperary LCDC for the delivery of SICAP 2024 – 2028

Building Connections: A New Network for LGBTQI+ Support in South Tipperary

Recognising the lack of formal supports for the LGBTQI+ community in South Tipperary, other than the Pride Festival Committee, STDC partnered with other agencies to take the first step in addressing this gap. As part of our SICAP work, we hosted an one-day health and wellbeing event, bringing together individuals, families, and allies from the LGBTQI+ community and beyond to explore ways of building a stronger, more connected community.

The day began with an inspiring speech by Clare Flynn from Mammies for Trans Rights, setting the tone for meaningful discussions. Workshops led by the Hope & Courage Collective, GOSSH, Men's Development Network, and Health Matters focused on wellbeing, inclusion, and advocacy.



LGBTQ+ rights activist and journalist Tonie Walsh reflected on the importance of community-led support networks. His insights reinforced the need for collaboration and long-term investment. By day's end, participants had laid the foundation for an ongoing support network.

"Hearing Tonie Walsh speak reminded me how important it is to keep pushing for change." –
Attendee

Support That Stays the Course: Patrick's Journey

One of SICAP's core strengths is that people can engage on their own terms, without pressure and without penalty. Patrick's journey in Tipperary Town shows how flexible, ongoing support helps people overcome complex barriers at their own pace.

"I appreciate all the time that you have given to help me find out information on my options."
– **Patrick, SICAP client**

Initially supported through SICAP's predecessor programme, Patrick accessed tailored personal development programmes. Living with mood disorders and a late dyslexia diagnosis, he progressed non-linearly through education and employment supports.

In 2019, Patrick became a full-time carer. Five years later, he reconnected with SICAP, ready to explore training options. With his development officer, Patrick tackled issues like transport, payments, and health, and enrolled in a course he was passionate about. Although circumstances led him to pause again, Patrick remains determined to continue on his positive journey.

Patrick's story highlights the importance of sustained, person-led support in building confidence and opportunity, on a timeline that works for the individual.



Traveller Health Care Project



Funded by the HSE

The Traveller Health Care Project (THCP) is a partnership between the HSE And South Tipperary Development CLG. The project focuses on the promotion of health and wellbeing within the community by delivering key health messages in accordance with the HSE Social Inclusion Southeast Community Healthcare (SECH) Traveller Health Care Programme.

The STDC Traveller Health Care Project was established in 1999. It works with Traveller Families in Clonmel, Cahir, Fethard, Carrick on Suir and Killenaule. It is a peer led programme in which Travellers engage and work with their own community to promote their physical, social and mental wellbeing. There are currently 4 Community Healthcare Workers and a Co Ordinator.

The work is underpinned by a community development approach, using peer led and culturally sensitive ways of working to engage the target population.

Our Outcomes 2024

- Health and wellbeing promoted to over 80 participants
- Period Dignity support to over 90 women
- Tailored 1:1 support for families to support and advocate individual needs
- Delivery of 2 Healthy Food Made Easy Programme in line with Slaintecare Healthy Communities
- Delivery of Traveller Culture awareness to 20 Tipperary University Hospital Staff
- Facilitation of various groups for women



Traveller Culture Awareness Training delivered by the THCP to Healthcare professionals from Tipperary University Hospital



Art class with a group of women

Recipes for Health: Traveller Women Stir Up Skills and Confidence

In 2024, our Traveller Health Care Project facilitated two Healthy Food Made Easy (HFME) programmes, engaging 20 Traveller women in a series of hands-on, practical sessions. Over six weeks, the women came together each week for 2.5 hours and learned about the Food Pyramid, healthy choices, cooking on a budget, sugar intake, salt intake and food hygiene practice, all based on current guidelines. Participants shared tips, swapped recipes, and tried out simple, healthy meals together in a relaxed setting. Many commented on how useful and surprisingly fun the experience was.

"I really enjoyed coming into the group every Tuesday morning. We made lovely food and we tasted different types of food" –
Attendee

The HFME underpins the goals and work of the THCP to promote healthy lifestyles and bring awareness to the issues that are affecting Traveller Health. This engagement with HFME reflects the Traveller Health Care Project's commitment opening up access to health information in ways that are relevant and practical, and that can respond meaningfully to the specific health needs of Travellers.



Informed, Empowered, Connected: A Health Event for Traveller Women

In April, the Traveller Health Care Programme (THCP) in association with the THU HSE hosted a Women's Health Event facilitated by Laura Dowling, The Fabulous Pharmacist.



The event was a huge success with 50 Women from the Traveller community in attendance. On the night they were brought on a journey of the female life stages. They were given an understanding of the different hormones that influence the female cycle, body and well being throughout the woman's lifespan.

Menopause is a different experience for women. Some will sail through it while others may experience the most extreme symptoms that have a negative impact on their lives. Practical tips were provided on how navigate these stages along with crucial education of when to seek medical support/advice. The session was delivered in a fun and interactive manner giving the ladies ample opportunity to ask questions. It empowered the ladies to better understand their bodies and seek help when needed, promoting long-term wellbeing and confidence.

"Many taboos were discussed this evening, and I enjoyed that the facilitator named our body parts out loud from the get-go. All Women have them, and we should not be ashamed to discuss these important topics" – **M.S**

Tús (Community Work Placement Initiative)



Funded by Department of Social Protection

The Tús Programme offers individuals who have been unemployed for at least one year and people with disabilities the chance to find part-time work placements with local community and voluntary organisations. It helps participants regain a work routine, develop new skills, and build confidence while contributing to their communities. Participants work 19.5 hours per week for a year, with access to training to enhance their skills for future employment. Many participants found their time on Tús to be very beneficial.

Beyond individual benefits, Tús has a significant positive impact in communities, where participants deliver vital services complementing local voluntary efforts.

Our Outcomes 2024

- 105 Communities benefited from 148,000 hours of work provided by Tús participants
- 73% of all participants who were previously long term unemployed progressed to training, alternative placement or employment
- 146 participants completed the programme
- Role Specific Core skills or Training provided to 107 participants in 2024 inclusive of Manual Handling, Horticulture Skills, Small Machinery, HAACP, Construction, Climate Action, Retail and Administration.



Information session in Cahir



Tús participants keeping Cahir litter free

In Memory of Eddie Tuohy: Tús Team Leader, Tipperary Town

The Tús programme plays a practical and valued role in Tipperary Town and its surrounding areas. Whether it's supporting projects in the Tipperary Hills, helping with Tidy Towns and residents' groups, or assisting in the upkeep of community-based facilities, enabling tourism and heritage projects, Tús contributes to the everyday life of the town. These projects are delivered by Tús participants who bring their time and skills to the work, supported by Team Leaders who offer structure, guidance, and encouragement.

Eddie Tuohy, who sadly passed away in January 2025, was one of our Tús Team leaders. He joined South Tipperary Development Company in 2011 and quickly became a central figure in our Tús programme. A proud Tipperary Town man, Eddie brought his local knowledge, professional skill, and deep sense of community to everything he did.



Every organisation looking for Tús staff were treated with the utmost sense of urgency. The clubs and communities he supported were all the better for his dedication. –
Paul O'Callaghan, Tipperary Hills



Go raibh leaba i measc na Naomh aige

As a Team Leader, Eddie understood the core purpose of Tús: to provide meaningful work placements that help people build routine, confidence, and a sense of contribution. He made sure participants were placed where their efforts would be valued, and he stayed close to each participant, offering encouragement and practical support every step of the way.

Eddie's background as an architect added a layer of insight to his work, but it was his ability to connect with people, his sense of humour and his great knowledge of Tipperary town that encouraged his participants. They remember him as someone who listened, supported, and brought out the best in them. Community groups appreciated how promptly and professionally he responded to their needs, he made things happen, without fuss.

Among his colleagues, Eddie was known for his quick wit, his love of a good story, and his ability to lift the mood in any room. He took pride in being part of the Tús team and was a valued member of the team.

"Eddie is sorely missed by his colleagues at STDC. He was always ready with a witty joke or a perfectly timed humorous comment that lightened up a busy or stressful day."
- Work Colleague

Supported Community & Voluntary Organisations

ABI Acquired Brain Injury	SICAP
Aherlow Crescent Residents Association	SICAP
Aherlow Failte	RR
Aherlow GAA	Tús, RSS
Aherlow Road Resident's Group	RSS
Aherlow-Kilross Community Council	Tús, RSS
Annacarty Tea Rooms	RSS, Tús
Ardfinnan Community Council	RR,RD
Ardfinnan Tidy Towns	Tús
Ardfinnan, Ballybacon, Grange, Newcastle Gunclub (ABGN)	Tús, RR
Ardmayle Graveyard	Tús
Ballagh Men's Shed	SICAP
Ballagh Social Centre Group	SICAP
Ballylooby Community Council	RD
Ballylynch Community Coming Together Group	SICAP
Ballylynch Residents Committee	Tús, SICAP
Ballylynch Woman's Group	SICAP
Ballyneale Tidy Towns & Community Sports Field	Tús
Ballynonty Community	SICAP
Ballyporeen Community Council CLG	RD
Ballyporeen GAA	RD
Bansha GAA	Tús
Bansha National School	Tús
Boherlahan Community Association (BCA)	SICAP
Boherlahan Dualla GAA	Tús
Burncourt Celtic	Tús
Burncourt Community Centre	RSS, Tús
Cahir Community Centre	Tús
Cahir Daycare Centre	Tús
Cahir Development Association CLG	Tús, SICAP,RD
Cahir GAA Club	Tús, SICAP
Cahir Men's Shed	SICAP
Cahir Tidy Towns	Tús
Camphill Communities Carrick on Suir	RD
Camphill Communities Grangemockler	RD
Canon Hayes Recreation Sports Centre	RSS
Cappawhite Community Council	Tús, SICAP
Cappawhite Active Retirement	SICAP
Cappawhite GAA Club	Tús
Cappawhite Old & New Graveyards Committee	Tús
Carrick Davins GAA	Tús
Carrick on Suir Amateur Musical Society	SICAP
Carrick on Suir Handball Association	Tús
Carrick on Suir Men's Shed	SICAP
Carrick on Suir LGBTI+ Group	SICAP
Carrick on Suir Musical Society	SICAP
Carrick Swans GAA	Tús

Supported Community & Voluntary Organisations

Carrowclough Residents Association	SICAP
Cashel & District Social Services	Tús
Cashel Tidy Towns	Tús
Circle of Friends Cancer Support Group, Tipperary Town	Tús
Clanwilliam Rugby Football Club	Tús
Clerihan Community Group	RSS, Tús
Clerihan Men's Shed	SICAP
Clogheen Tidy Towns	RSS, Tús
Clogheen Men's Shed	SICAP
Clonmel Celtic Football Club	Tús
Clonmel Junction Festival	Tús
Clonmel Men's Shed	SICAP
Clonmel Og GAA	Tús
Clonmel Golf Club	Tús
Clonmel Rugby Club	RSS, Tús
Clonmel Stadium	Tús
Clonmel Together	SICAP
Clonmel Tourism	RSS
Clonmel Town FC	RD
Clonmel Union of Parishes	Tús
Clonmel Youth Training Enterprise	Tús
Clonoulty Tidy Towns	Tús, RSS
Commons Residents Group	SICAP
Commons Tidy Towns	SICAP
Cooleens & Heywood Close Residents Group	Tús, SICAP
Cullen Graveyard	RSS
Cullen Tidy Towns	RSS
Cullen-Lattin AFC	RSS
Daltons Heritage House	RSS
Dualla Community Council	Tús
Dundrum Men's Group	Tús, RSS
East Munster Way, Graige Group	SICAP
Elm Park Community & Residents, Clonmel	RR
Elm Tree Community Centre	SICAP
Emly Historical Research	Tús
Fethard and District Day Care CLG	Tús
Fethard Commerce & Tourism	Tús, SICAP
Fethard Men's Shed	Tús
Fethard Regional Community Sport and Recreational Campus CLG	SICAP
Fethard Youth Centre (Community Council)	RD, Tús
Friends of the Playground Cahir	Tús
Glen Dara Residents Association, Mullinahone	SICAP
Glenconnor Hill Residents Association	SICAP
Glengoole Community Group	Tús
Glengoole Hall Committee	RR
Goatenbridge-Ballybacon Development	RD
	Tús

Supported Community & Voluntary Organisations

Golden Kilfeacle ICA	SICAP
Golden Tidy Towns	Tús
Golden-Kilfeacle GAA	Tús, RSS
Grange Development Association	RD
Grangemockler Active Retirement	SICAP
Grangemockler Community Sportsfield	RSS
Hillview Sports Club	Tús
Irish Wheelchair Association Community Centre, Tipperary Town	Tús
IWA Shop, Tipperary Town	Tús
K Plan Community Centre	Tús
Kickham Place Residents Association, Mullinahone	SICAP
Kilfeacle & District RFC	RSS
Killenaule Senior Citizens Club	SICAP
Killenaule Women's Group	SICAP
Kilross Tidy Towns	Tús, RSS
Kilsheelan Tidy Towns	Tús
Knockanrawley Resource Centre	Tús, RSS, RD
Knockavilla-Donaskeigh Kickhams GAA	RSS, Tús
Knockmealdown Active	Tús,RSS,RR,RD
Larkspur Park	Tús,RD
Lattin GAA	RSS
Lattin Tennis Club	Tús
Lattin Tidy Towns	RSS
Lisronagh Residents Committee	Tús
Littleton Community Development	RR
Marl Bog / Multeen Way Committee	RR
Marlfield Village Association	Tús
Millenium Family Resource Centre	SICAP
Memory Cafes Network	SICAP
Mochara Charity Shop	Tús
Monard Hall	RD
Moyle Rovers GAA	Tús
Mullinahone Community Council	RD
Mullinahone Men's Shed	SICAP
Multeen Way/ Marl Bog Committee	RR
Munster Vales	RD
NCBI, Carrick on Suir	Tús
NCBI, Cashel	Tús
NCBI, Tipperary Town	Tús
New Inn Tidy Towns	Tús,RD
New Inn Parish Council	Tús
Newcastle Community Alert	RSS
Newcastle Community Council	RD
Newcastle NS	RSS
Oakland Drive Daycare	Tús
Old Bridge Community Association	Tús, SICAP
Old Bridge FC	Tús
Old St Mary's Clonmel	Tús

Supported Community & Voluntary Organisations

One Town, One Voice Tipperary	SICAP
Oola Youth Club	Tús
Pause Slowbreath Start Talking	SICAP
Pearse Park Residents Group	SICAP
Rehab Care, Bridgewater House	Tús
Rehab Care, Knocklofty	RSS
River Bank Project	Tús
River Rescue Base	Tús
Rosegreen Development Association	Tús
Rockwell Rovers GAA	Tús
South Tipperary Arts Centre	Tús
South Tipperary GAA, Clonmel	Tús
St Patricks Residents Association	Tús
St. Declans Way Committee	RR
St. Johns Cathedral Parish Council	Tús
St. Johns Residents Group, Carrick	SICAP
St. Marys Choral Society	Tús
St. Michael's Avenue/ Marian Terrace Residents association	SICAP
St. Michael's Junior Boys School	RSS
St. Pauls Church, Cahir	Tús
St. Vincent de Paul, Carrick on Suir	Tús
St. Vincent de Paul, Clonmel	Tús
St. Vincent de Paul, Cahir	Tús
St. Mary's Church of Ireland	RSS
St. Nicholas Boxing Club	Tús
Sue Ryder Foundation	Tús
The Commons-Ballingarry Community Field	Tús
Three Drives Family Resource Centre	Tús
Tipperary Citizens Information Centre	Tús
Tipperary Clonmel Community LGBTQ+ Pride	SICAP
Tipperary Community Council / Community Centre	Tús, RSS
Tipperary Hills Handball Alley	SICAP
Tipperary Hills Pitch and Putt Club	Tús
Tipperary Library Participation Group	SICAP
Tipperary Men's Shed Network	SICAP
Tipperary Midwest Community Radio	RSS, RD
Tipperary Residents Network	SICAP
Tipperary Rural Traveller Project	SICAP
Tipperary Tidy Towns	Tús, SICAP
Tipperary Town Chamber of Commerce	Tús
Tipperary Town Football Club	Tús
Tipperary Town Revitalisation CLG	RD, RR
Tipperary Town Syrian Community Group	SICAP
Tipperary Tourism	RD
Ukrainians in Tipp Town	SICAP
Waller's Lot Working Group, Cashel	SICAP
Wilderness Rovers Football Club	Tús, SICAP
Youth Work Ireland Tipperary	Tús



Comhlacht Forbairt

Thiobraid Árann Theas CTR



WWW.STDC.IE



[/SOUTHTIPPERARYDEVELOPMENTCOMPANY](https://www.facebook.com/SOUTHTIPPERARYDEVELOPMENTCOMPANY)



[/SOUTHTIPPDEVCO](https://www.instagram.com/SOUTHTIPPDEVCO)



[/SOUTH-TIPPERARY-DEVELOPMENT-COMPANY](https://www.linkedin.com/company/SOUTH-TIPPERARY-DEVELOPMENT-COMPANY)