

Winchelsea Star

Price \$1

Your Weekly Community Newspaper

Since 1977

Vol 46 Ed 48

Tuesday 12 December 2023

winchelseastar.org.au



CAROLS BY THE BARWON

The Winchelsea Community enjoyed a night of live music and Christmas cheer at the annual Carols by the Barwon at Winchelsea Leisuretime Centre last Saturday 9 December

GROWING WINCHELSEA INC

CAROLS

Growing Winchelsea Inc was excited to share the return of the annual Carols by the Barwon, a family friendly event for all ages and a perfect way to end the year.

The forecast rain necessitated a quick change of venue, and Winchies gathered at the Leisure Time Centre at 5.30pm last Saturday 9 December 2023.

To keep our community safe, it was an alcohol and smoking/vaping free event.

What a great way to kick off the festive season!



BY THE BARWON



Made for more purpose



At Victoria Police, you will enjoy a purposeful career making a real difference in your community. With more benefits including a generous starting salary, 9 weeks paid leave, and access to ongoing training and support. Start your career with Victoria Police today.

🔍 [police careers](#)

Authorised by the Victorian Government, 1 Treasury Place, Melbourne



**MADE
FOR
MORE**

MGT BUILDING & CONSTRUCTION

NEW HOMES | EXTENSIONS | RENOVATIONS

Ph: 0409 433 687

REGISTERED Building Practitioner

Winchelsea Taxis is now Surfcoast Taxis

Our fleet of vehicles are growing to all late models and we are covering an extended area including Winchelsea, Colac, Bannockburn, Inverleigh, Great Ocean Road and Geelong.

We have a fleet of 10 seater Maxi Vans, all with capacity to carry wheelchairs.

Surfcoast Taxis Pty Ltd
All Bookings: 0408 325 992
Fax: 5267 2699
Email: bannotaxis@gmail.com
(Admin or Stan 0429 672 888)
66A Batson Street
Winchelsea 3241



Accounts NDIS provider. TAC, DVA etc

NDIS provider number 4050001044
NDIS provider number 4050001048

Wightons Lawyers

Dispute Resolution & Litigation

Debt Collection

Property Law

Wills & Estates

Powers of Attorney

Business Law

Family Law

By appointment only

22 Willis Street, Winchelsea
ph. 5221 8777

www.wightons.com.au



Winchelsea Fire Brigade Santa Run

Friday 22 December 2023



Santa and his helpers will be at the following locations -

- | | |
|---------------|---------------------------------|
| 6:30pm | Football Oval Playground |
| 6:40pm | Main St Rotunda |
| 6:50pm | Dwyer St Playground |
| 7:00pm | Armatage St Playground |
| 7:15pm | Barwon Tce Playground |

This year we also will be going down some streets for those that can not make it to the designated area, but if you would like a quick photo with Santa please head to one of the areas chosen.

*Also a reminder if we get paged to a incident/fire
this maybe postponed or cancelled.*

Winchelsea Fire Brigade
21 Harding Street, Winchelsea, VIC
<https://www.facebook.com/winchelseafirebrigade>



WHEN YOU NEED THE POLICE, BUT NOT THE SIRENS

IF YOU'VE HAD YOUR 📱 OR 💍 GO MISSING,
COME HOME TO FIND YOUR 🏠 HAS
BEEN DAMAGED, HAD YOUR 🚲 STOLEN
OR YOUR 🚗 BROKEN INTO, OR
WANT TO REGISTER A 🎉 WITH POLICE...



🔍 report online

ANYTIME



LEARN MORE





Winchelsea Probus Christmas lunch



CAREER PATHWAYS THAT LEAD TO A SAFER COMMUNITY

Create change **from the inside out**

Working in Youth Justice allows you to make a positive impact on the lives of young people in custody. And with full training, good pay and a supportive team around you, it could change your life too.

Find out more at justice.vic.gov.au/youthjusticecareers

RECRUITING NOW



Justice and Community Safety

01CS0001E06



Water Supply Specialists

WATER SOLUTIONS

74 Dennis Street, Colac
5231 1861



ALL THINGS WATER:

- PUMPS · PIPES
- FITTINGS · TANKS
- POOL CHEMICALS
- IRRIGATION
- WATER PURIFICATION
- SOLAR · REPAIR



HESSE
RURAL
HEALTH



Volunteers Required

Volunteers are one of Hesse's greatest assets, playing a vital role to enhance the quality of Hesse services & client experiences.

- Bus Driver
- Outings Assistant
- Resident Visitor
- Events & Activities Assistant
- Group Wheelchair Walkers
- Appointment Escort
- Social Support Activities
- Gardening - Winchelsea
- Hospital Auxiliary Member
- Consumer Advisory Committee
- Marketing & Fundraising Committee

For more information please contact Hesse on (03) 5267 1200 or via email reception@hesse.vic.gov.au

Winchelsea Men's Shed



For The Community
Men's Shed Kindling/Offcuts
Bags of Kindling/timber offcuts are available for pick up from the Men's Shed on Wednesday's from 9.30 to 2.30.

If you need a delivery made you can call Bill on 0438 083 373. The price for a bag of kindling is now \$7.00 (up from \$5.00).

Nesting Boxes

Bird or animal nesting boxes are available from The Men's Shed. These can be made to order. Call in on any Wednesday to have a chat.



Winchelsea Star COMMUNITY NOTICEBOARD FREE ADS

The Winchelsea Star is pleased to print Announcements of local Births, Engagements, Marriages, Birthdays, Anniversaries, Deaths and Funerals.

Email editor@winchelseastar.org.au or leave at Winchelsea IGA

WINCHELSEA LIONS CLUB

Christmas cakes and puddings

Now available Ray 0406 371 239
Winchelsea Lions
annual community fundraiser.

GARDENER WANTED

I need an experienced gardener to help with 2 acres of garden.
Minimum of one day a week.
Contact David on 0410 029 857.

LIONS CHRISTMAS RAFFLE

Winchelsea Lions Christmas Raffle is under way.

Prizes are \$300, \$200, and \$100 vouchers from IGA (alcohol excluded).

Drawn December 16th.

Tickets on sale Thursdays, Fridays and Saturdays outside IGA.

Or call 0439 817 263.

Proceeds to go towards a public access defibrillator at the Golf Club.

SHREDDED PAPER

Winchelsea Lions Club has shredded paper suitable for bedding for pet mice, guinea pigs, chicken boxes or worm farms.

Gold coin donation at Lions paper shed behind Senior Citizens, Harding St.
0476 475 422.

'WHAT A GREAT IDEA!'

Coffee cup holders available from participating coffee shops or Winchelsea Lions, 0476 475 422
100% funds raised go back into the community and saves on landfill.
\$2 for 2 cup, \$4 for 4 cup



Winchelsea Churches



Winchelsea Uniting Church

Hesse St, Winchelsea 3241
uca.winchelsea@gmail.com
0475 777 301
Services 9.30am Sundays

St John's Catholic Church

Mass Times - December

Winch 6pm Sat Dec 2/9/16/23/30
Inverleigh 4pm Sun Dec 17
Christmas Day: Winchelsea 9am

Mass Times - January

Winch 6pm Sat Jan 6/13/20/27
Inverleigh 4pm Sun Jan 21
Harding St, Winchelsea 3241

Father Joseph Panackal
0404598558

St Thomas' Anglican Church

10am
Barwon Tce, Winchelsea
Rev'd Phil Jacobson
stthomaswac@gmail.com
0477 672 042

Thought for the Week

"My only comfort, both in life and in death,
Is that I am not my own,
but belong with body and soul
to my faithful Savior, Jesus Christ.
If you are able to say that,
then no matter what happens,
you can rest in peace."

John Bader,
Former U/C Accredited Lay Preacher



Winchelsea Pram Walks

Explore pram-friendly walking routes in your local area with a member of the Surf Coast Shire Child and Family Health team.

Come along, have a chat, and meet other parents with little ones!

No bookings required, simply show up!

Third Tuesday of the month
Cafe La Hoot, 1 Willis Street,
Winchelsea, 3241

FREE

Child and Family Health 5261 0549
childandfamily@surfcoast.vic.gov.au



Winchelsea Star

contact us

NEWS and ARTICLES ARE MOST WELCOME

Include name and address of the sender
 Email news@winchelseastar.org.au
 Leave hard copy at IGA Supermarket

DEADLINES

5pm Fridays

4pm Sundays - hard copy articles left at IGA
 6pm Sundays - sports results and weekend events

FREE DIGITAL SUBSCRIPTION

winchelseastar.org.au

ADVERTISING

advertising@winchelseastar.org.au 0408 102 802
 600 online subscribers,
 250 copies printed for outlets around Winchelsea

follow us

ONLINE

winchelseastar.org.au

FACEBOOK

facebook.com/TheWinchelseaStar

PRODUCTION

Editors:	Cerrie Fogan, Yvonne Stevens, Judy Cameron
Advertising:	Sasha Gauntlett, Neil McInnes
Design:	Tony Phelps, Susan Corby
Printing:	Winchelsea Community House
Website:	Winch Websites

COMMITTEE

President:	president@winchelseastar.org.au Mick O'Mara
Treasurer:	treasurer@winchelseastar.org.au Cathy Cheadle
Secretary:	secretary@winchelseastar.org.au Tony Phelps
Members:	Linda Carter, Sasha Gauntlett, Neil McInnes, Judy Cameron, Yvonne Stevens, Cerrie Fogan,

© Winchelsea Star Org. Inc. All rights reserved
 Winchelsea Star Organisation Inc.
 Reg. No. A0053999F, ABN: 75 941 529 279
winchelseastar.org.au PO Box 5, Winchelsea, 3241
 Views expressed are not necessarily those of the
 Winchelsea Star or its Committee. The Winchelsea
 Star reserves the right to edit or not publish any article.



You can write for the Star

We want the Star to inform, engage, inspire, and interest the residents of Winchelsea and surrounds. And we need your writings to get there.

The Star has no actual reporters or designated writers - we publish what you send us. If you have some news, an opinion, an interest or perspective, or a story - we'd love you to send it in for publication.

The Star loves to hear anything of direct interest to the Winchelsea community. The more local content we can put in, the better!

How much can I write?

You can write just one article. You can start a new column about something you're interested in. You can send us a series of articles on a theme. What would **you** write about?

Your article can spread over 1 or 2 pages (approx 850 words) or you can write longer pieces and split them across multiple editions.

Add a photo or two, an article title and author's name (preferably).

Can you publish my photos?

A picture is worth a thousand words - but context is very interesting too! If you have a photo you'd like in the Star, add a few words describing where, when, who, why and/or what.

Ask permission to use photos

When you send us a photo, you give us implied permission for reproduction.

You have liability when publishing an image, so be sure you own the image or have written approval to use it. It is easy for copyright owners to find stolen images online, where the Star can be found.

Legalities

Our Editors will not approve anything libellous (ie. when a false statement is published in written form and does harm to a victim). The Star is a community newspaper - 'for' and 'against' opinions on contentious topics are welcome, but attacking individuals or groups is not.

We look forward to hearing from you.

Simply email editor@winchelseastar.org.au





Grant recipients join Mayor Liz Pattison, and councillors Mike Bodsworth (Anglesea), Rose Hodge (Torquay), Gary Allen (Lorne) and Adrian Schonfelder (Winchelsea).

From men's health to art making workshops, grants go out across the Surf Coast Shire

The Surf Coast Shire Council has awarded its latest round of grants to 32 community groups and their representatives, as part of its revamped Community Grants Program.

The August 2023 Quick Response Grants (\$46,969), and the September grants (\$50,098), awarded a combined total just above \$97,000.

The September grants included two new grant streams – Health and Wellbeing, and Minor Capital Project Grants.

Nine grants were awarded across the four categories:

- 1 x Natural Environment Grant: \$7,700
- 4 x Community Initiative Grants: \$12,398
- 3 x Health and Wellbeing Grants: \$15,000
- 1 x Minor Capital Project Grant: \$15,000.

Jan Juc Cricket Club received \$15,000, Council's largest grant to date and first under the new Minor Capital Project Grant stream, for a new permanent storage shed.

Surf Coast Shire Council Mayor Cr Liz Pattison officially opened the celebrations at last week's event.

Handing out awards to their respective wards were councillors Mike Bodsworth (Anglesea), Rose Hodge (Torquay), Gary Allen (Lorne) and Adrian Schonfelder (Winchelsea).

Mayor Pattison said the event was a wonderful reminder of the "amazing people, projects, and volunteers" residing in the Shire.

"It is always a pleasure to take part in the grant celebrations because I experience firsthand the dedication so many of you have to your communities and each other," she said.

"This round of grants once again captures how from little things big things grow, and with a little help from Council, you continue to deliver amazing projects."

At the grants celebration, guest speakers and former grant recipients Heather McKee, and Alicia Crawford from the Aireys Inlet Community Garden shared how a recent grant impacted their garden.

"The garden is more than just a garden for so many, it is a place to connect to others in the community. The grant allowed us to run three sold-out workshops," Ms Crawford said.

"Passata making, fruit preserving and vegetable pickling. Learning how to limit wastage while gaining new skills amongst friends has been amazing and part of our sustainability ethos."

Find out more about Council's Community Grants Program at surfcoast.vic.gov.au/grants.

National online biosecurity training hub now open!

Agriculture Victoria

Australia's first one-stop shop for online biosecurity training is now open and available to anyone looking to increase their understanding about biosecurity.

Agriculture Victoria has partnered with Plant Health Australia (PHA), the Queensland Department of Agriculture and Fisheries, New South Wales Department of Primary Industries, and Animal Health Australia (AHA) to create the National Biosecurity Training Hub.



Agriculture Victoria Executive Director Dr Katherine Cliff says biosecurity and emergency animal disease preparedness is a top priority for Victoria.

'Victoria faces intensifying biosecurity risks – driven by climate change, increasing trade and travel, and changing land use,' Dr Cliff said.

"Small actions can have big impacts on preventing and managing the harms caused by pests and diseases. The things we do, or don't do, can touch everything we value."

Dr Cliff said biosecurity was a matter for all Victorians, not just people on farms and the training hub is a great way for people to increase their understanding and knowledge.

'We can all help prevent pests from getting into Victoria, contain outbreaks before they get out of hand, and manage established pests and weeds,' she said.

The National Biosecurity Training Hub (the Hub) offers a central location with a database of online biosecurity training

resources to help reduce the duplication of effort and costs associated with developing and delivering biosecurity training.

The Hub unifies and streamlines training to give national visibility of biosecurity-related training across government, industry and community in a single location.

The Hub is a centralised platform that supports biosecurity prevention, preparedness, response and recovery by providing users with access to the latest biosecurity-related training materials and courses suited to different industries, levels and skill sets.

Designed with learners in mind, the Hub is easy to navigate with a library of plant, animal and aquatic biosecurity training that is searchable using a topic, keyword, location, preferred method of delivery.



The quality assurance protocols in place ensures each course listed meets the required standard.

The Hub can be found at biotraininghub.com.au and features 64 online training courses with plans for continuous expansion.

Organisations with biosecurity training packages interested in contributing to the Hub are encouraged to make contact with PHA via nbth@phau.com.au

The logo for Winchelsea Concreting, featuring a stylized 'W' and 'C' symbol to the left of the text "WINCHELSEA CONCRETING".

**WINCHELSEA
CONCRETING**

• Driveways • Sheds • Decorative Concrete • Raft Slabs

Robert Murphy
☎ 0438 235 237
✉ winchelseaconcreting@outlook.com

Knuckey's Winchelsea
Ph: 5267 2011

Knuckey's have in stock a complete range of batteries to suit tractor, heavy machinery, cars, utes

The largest range of the best oil for your vehicles—**CASTROL**—
'when only the best will do'

The largest range of V belts.
A, B, C, D M Sections
Bolts and nuts for all occasions
Steel cut to size



YOU ARE INVITED TO THE



PARISH CHRISTMAS BBQ

WORLD FAMOUS ENTERTAINMENT BEGINNING AT 2.00PM

**Come along from 12pm and bring friends and family.
Salads, cake, tea and coffee (and the BBQ) provided.
For more information phone 0419322385.**



**16
DEC
2023**

**12:00 PM
3:00 PM**

BYO EVERYTHING TO 70 LAUDERS LANE WINCHELSEA

Phil Jacobson

It's not too hard to tell that Christmas is barreling towards us, and the list of community events involving Winchelsea is great to see as the big day gets closer. There really is something for everyone.

So, to add to the list, some might say confusion, let me give a plug for what we've chosen to do at St Thomas'. Please keep reading because some is what you'd expect, but some is a bit strange!

The "what you'd expect", are our mainline church services, namely a service of "Lessons and Carols" as we join with the other churches in Winch on Christmas Eve at 7.00pm at St Thomas'. This service goes way back, and it basically traces the Christmas story by linking Bible readings with carols, so it gives some context to the carols that we sing as we approach Christmas. It's a great way to enter Christmas Eve before the little ones put out the carrots and biscuits (or cake) for the reindeers and Santa.

But, before this service, we have an absolutely great Children's Christmas Eve Service at 5.00 pm. Wondering what this is about? Well, think "Mainly Music" meets "Play

School" and the "Wiggles" and you're getting close. This starts at 5.00pm and is really short and sharp so the little ones will be in bed on time and the carrots and biscuits (or cake) for the reindeers and Santa will be by the Christmas tree. The service has a whole range of giveaways for the kids, a craft exercise, great carols, and other Christmas songs, together with Christmas readings and stories and the service is very inclusive as it rolls along. If you have family members or neighbours, especially those with young children please let them know about this service which will go for about 45 minutes.

Our Christmas Day service is at 9.00am, which is an hour earlier than our normal Sunday service.

Now the strange bit. How would you like to come along to a BBQ where you bring your own meat, drink chairs etc (we provide salads, cake, tea, and coffee)? The aim is to meet more residents of Winchelsea, because as the town grows, we don't want to lose touch.? It tickles your curiosity, then come to 70 Lauders Lane on December 16th from 12.00 onwards. Throughout the afternoon we've got world class entertainment, so you'll save on tickets to Hamer Hall.

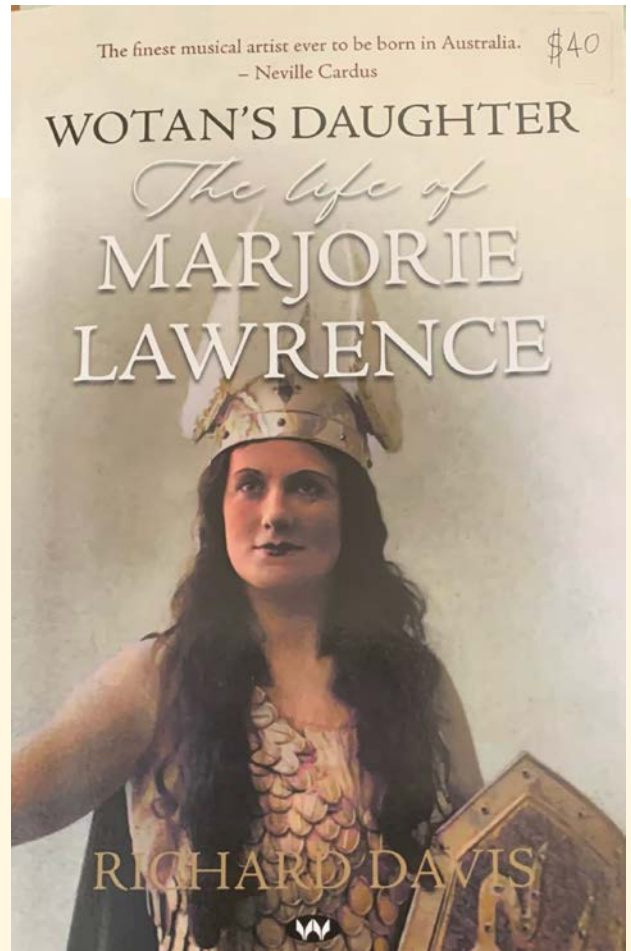
Winchelsea Historical Society Winchelsea Street Names

MARJORIE LAWRENCE DRIVE

Marjorie Lawrence was one of the most renowned opera stars in Australia.

Despite her worldwide fame she returned to Victoria for a much anticipated visit to the Globe Theatre in Winchelsea - which her father had built for her to sing in - led by a family friend carrying a large Australian flag and one hundred citizens, all mounted on horses of various shapes and sizes, who met her on the outskirts of town and escorted her to the Shire Hall for a civic reception.

Her story is told in the latest book we have for sale - *Wotan's Daughter The life of Marjorie Lawrence* - at the Historical Society.



DAVIC AG

CONTRACTING AND EARTHMOVING

For all your harvesting needs
Mowing, raking, round bailing, paddock prepping, spreading and sowing

Call Dave on **0417 579 973** Bambra

Scott McDonald
0423 413 829

S.J.R AUTOMOTIVE
ABN 942 483 646 39
13 ALSOP DRIVE, WINCHELSEA VIC 3241

WINCH WEBSITES
WEB SOLUTIONS SIMPLIFIED.

WEBSITES

GROW business
INCREASE reach
SAVE time

**Find out what a website
could do for you**
winchwebsites.com.au
04 887766 20

**OZ TREES NURSERY
& TREE PLANTING SERVICES**

- Affordable seedlings—over 200 species
- Complete plantation service—farm forestry, shelter, aesthetics
- Deep ripping & mound ploughing. Rotary bed forming
- Our experienced staff will help you select species for your site conditions and needs

Also available—tree planting tools, milk cartons, plastic tree guards & bamboo stakes

569 Warrowie Rd. Colac
P: 5233 6280 F: 5233 6393
E: info@oztrees.com.au
W: www.oztrees.com.au
Open Monday—Friday
9am—4:30pm

Phone OzTrees for professional advice,

B & H Modifications
Bob Verity

55 Stephenson Road
Winchelsea 3241
Ph: 5267 2467
Mobile: 0411 610 678

**Industrial Sewing
Machine Work**

Caravan Annexes, Trailer Covers,
Shade Sails, Alterations and
Repairs to
Camping and Tents.
Clear PVC Blinds
Repairs to CLEAN Horse Rugs
No Job Too Small
Email: bobverity@southernphone.com.au



Winch House AGM Auspice Report

Winchelsea Men's Shed

Frank Jelliff, Secretary

The AGM for the year 2022-2023 was held on 5th July 2023. Office bearers were elected for the 2023/2024 year. Ray Atkinson continuing as Co-ordinator. Frank Jelliff continuing as Secretary and Ray King as Treasurer. Wendy Greaves was our guest chairperson for the meeting.

The Winchelsea Men's Shed continues to provide a friendly and inviting meeting place for men in the Winchelsea and surrounding areas. The Shed has a well equipped workshop and welcomes anyone who wants to drop in for a chat and a cuppa. The Shed is open every Wednesday and holds monthly meetings on the second Wednesday of the month. We appreciate the support of the community and our sponsors who help to keep the Shed a thriving environment.

During the beginning of this financial year we introduced "Women's Workshops". We had regular attendance from ladies wanting to learn new skills. Thank you to Stuart Forbes who has given generously of his time in running these workshops.

The Winchelsea Community garden is overseen by the Men's Shed and made operational and productive by the continuing hard work of our members, but mainly the work of Clive Milne and Clyde Stephenson. Like last year, we had to add security to the garden fencing due to damage and theft. This was unfortunate as it takes away the enjoyment and freedom that the environment provides.

In June The Bendigo Bank provided a very generous grant for the upkeep and continued productivity of the garden. The grant will assure the garden will continue to grow and thrive.

The ongoing sale of timber offcuts, kindly supplied by a Geelong business, continues to earn the Shed a steady income through the colder months. The cost of a bag was raised from \$5.00 to \$7.00 during the year but is still a cheap buy and assists the local community.

Shed income is also supplemented by small (and some not so small) jobs that the more skilled members of the shed complete for local people and organisations. Income from activities and projects goes towards maintaining the machinery and replacing it where necessary. The sale of items handmade by Shed members also contributes to overall income.

The Shed continues to run barbecues at the Winchelsea monthly market and Torquay Bunnings every few months to raise further funds for the group.

We encourage Shed members to attend self development courses where they provide a benefit to the Shed in general. During the year we had members attending First Aid, Defibrillator training and Food Handling courses. The cost

for these courses is funded by the Shed and comes from the income generated by Shed activities.

New equipment in the form of a new router table and drop-saw were purchased during the year. Extra storage for garden equipment and supplies was also acquired.

The Bendigo Bank once again came to our aid with a generous grant for the purchase of a new computer and vacuum cleaner. These items were timely replacements for our outgoing, ageing equipment.

We thank The Surf Coast Shire for co-ordinating quarterly meetings for the Sheds under their jurisdiction. Terri Hannan ably co-ordinates these meetings which sees the leaders of the four Surf Coast Men's Sheds, Torquay, Anglesea, Lorne and Winchelsea gather for what is called "Heads of Sheds" meetings. These meetings are held at the different sheds on an alternating basis. They are a great source of information as well as for sharing ideas and resources across the region. These help to foster a good working relationship for all involved. We appreciate the work Terri puts in co-ordinating and chairing these catch-ups.

Thanks to The Bendigo Bank who continue to support us with grants and assistance. We cannot thank them enough. Thanks to our co-ordinator Ray Atkinson who continues to be the first port of call for the Shed. Thanks to Ray King who controls the purse strings as Treasurer and to Bill Walters who oversees the running and maintenance of the workshop and is ably assisted by Stuart Forbes.

Overall the Shed had a good year but would ideally like to see a growth in membership.

Finally, we would like to acknowledge the contribution and friendship of John Bumford, one of our most valued members, who passed away last year. John is sadly missed by the Men's Shed and the Winchelsea community as a whole.

The Winchelsea Men's Shed currently has 17 registered members.

The Committee of Management for year 2022/2023 was as follows:

CO-ORDINATOR	Ray Atkinson.
SECRETARY	Frank Jelliff
TREASURER	Ray King
GARDEN SUPERVISER	Clyde Stephenson (Clive Milne)
WORKSHOP MANAGER	Bill Walters assisted by Stuart Forbes

Joint statement on Treaty Authority appointment

The First Peoples' Assembly and the Victorian Government have welcomed the announcement of the five inaugural members of the Treaty Authority who will serve during upcoming Treaty negotiations in Victoria.

The historic appointments were recommended by an independent panel following a rigorous and competitive selection process.

All five Treaty Authority Members are First Peoples and bring diverse expertise, skills and experience to their new roles:

- Dr Petah Atkinson is a Yorta Yorta woman and health researcher with an extensive background in the Aboriginal health sector
- Thelma Austin is a Gunditjmara woman with experience as a cultural advisor and manager in corporate and legal sectors
- Jidah Clark is a Djab Wurrung man and lawyer with strong policy expertise across the private, public and community sectors in youth justice, community engagement and policy development
- Andrew Jackomos is a Yorta Yorta man with decades of government expertise, including time as the Commissioner for Aboriginal Children

- Duean White is a Biripi woman with corporate, legal, government and not-for-profit experience.

With bipartisan support, the Treaty Authority is the first body of its kind in Australia and will observe and uphold Aboriginal Lore, Law and cultural authority to ensure Victoria's Treaty process is fair for all parties involved.

The appointment of the Treaty Authority Members is a historic moment for the State on the journey to building renewed and strengthened relationships between First Peoples, the Labor Government and all other Victorians through Treaty-making.

The independent selection panel comprised distinguished Aboriginal leaders, Karinda Taylor, Aunty Vicki Clark OAM, Eddie Cubillo, Marcus Clarke and former Minister Richard Wynne.

First Peoples' Assembly of Victoria Co-Chair Ngarra Murray

"The Treaty Authority is the first of its kind and a cultural institution that will be grounded in our culture, lore and law and will facilitate Treaty-making. Members of the Treaty Authority are respected figures of our communities who will have the responsibility and cultural authority to bring us together as we begin treaty negotiations."



**SOUTHERN
GRAIN STORAGE
PTY. LTD.**

AG SUPPLIES FERTILISER GRAIN STORAGE SEED CLEANING

(03) 5267 2351



5234 6585 0417 385 984

For all your domestic & stock water.

Also available for road and civil construction
Local owned and operated.

**MRP
Steelworx**

Matthew Partridge
p 0418 672 334
e mrpsteelworx@yahoo.com.au

Welding Service

- Onsite welding
- Farm maintenance
- Farm machinery & equipment repairs
- Cattle & sheep yards
- Custom built trailers
- Supply & install gates

Antique Repairs

By **Doug Burns** est. 1976

- All Furniture
- French polishing
- Carving
- Veneering
- Wood Turning
- Porcelain



Unusual Requests Welcome

180 Barwon Terrace, Winchelsea

0428 672 704



**Winchelsea
Supermarket**

Trading Hours

Monday to Saturday


8.30am to 7.30pm

Sunday

10am to 7pm

Ph: 5267 2676

29 Main St, Winchelsea

A man with a beard is sitting in the driver's seat of a car at night. He is holding a yellow breathalyzer device in his mouth and blowing into it. The device has a red screen and the number '99' and the word 'SYDNEY' are visible on it. The background is dark, suggesting it's nighttime.

Stop kidding yourself. If you drink, don't drive.

Thinking about driving after a couple of drinks? Think again.
If you blow .05 or over, you could face serious penalties,
including fines, losing your licence, getting an interlock installed
in your car and having to blow zero for three years.

TAC

VICTORIA
State
Government





Harmony of Boundaries

Artwork installation by esteemed Worimi Artist, Gerard Black

Hesse Rural Health proudly unveiled Harmony of Boundaries in a ceremony on Tuesday 5 December. This captivating artwork installation by the esteemed Worimi Artist, Gerard Black is now on display at 8 Gosney Street, Winchelsea.

Harmony of Boundaries reflects the history and journey of the Wadawurrung and Eastern Maar people, who are the Traditional Custodians of the lands on which Hesse operate our healthcare services.

Gerard spoke to how each element in the artwork was a considered choice and echoes the natural flora and fauna seen in Winchelsea, that is significant to Wadawurrung country and Eastern Maar Nation.

Gerard talked of how at its core, the power pays homage to ancestral custodianship of two distinct traditional owner groups. Through a carefully curated interplay of elements Gerard has brought forth the natural beauty and spiritual essence of the landscape.

This piece is a testament to the profound connection between the land, water, and skies that cradle the Hesse service area.

Through a carefully curated interplay of elements, Gerard Black brings forth the natural beauty and spiritual essence of the landscape.

The flowing water, a central motif, symbolizes the dynamic boundary between the Wadawurrung and Eastern Maar territories. It embodies the life-giving force that binds these two nations, offering sustenance, vitality, and a sense of continuity.

The flora and fauna depicted within the artwork mirror the indigenous biodiversity of the Hesse region. Each brushstroke and carving is a homage to the resilience and adaptability of the native species.

This connection to nature is integral to the ethos of Hesse Rural Health, where the environment is recognised as a vital factor in the holistic well-being of patients.

The rising sun on Wadawurrung Country signifies not only the dawn of a new day, but also the promise of renewal and growth.

Conversely, the setting sun over Easter Maar Nation ushers in the night, revealing the tapestry of stars that illuminate the sky.

This celestial cycle is a reminder of the enduring presence of ancestors and creators, a connection that transcends time and place.

Above, the wedge-tail eagle soars, a symbol of strength and vision, while the Cockatoos dance in a chorus, representing the vibrancy and communal spirit of the land.

Their watchful gaze from the skies is a constant, reminding all who pass through the Hesse service area of the ever-present connection to the land, water, and sky.



Ian Whiting (Hesse Board Chair), Gerard Black (Worimi Artist) and Carissa Brock (Hesse CEO)



Lexi and Mia (Winchelsea Primary 2023 School Captains)





Rhys Jeffs, Gerard Black, Tia Brown, Ebony Hickey

Harmony of Boundaries is more than an artwork: it is a living embodiment of the spirit that defines Hesse Rural Health.

It serves as a testament to the enduring relationship between humanity and the natural world, reminding all who interact with it of their place within this greater tapestry of existence.

The decision to commission this artwork was driven by Hesse's endeavour to further deepen our reconciliation efforts and actively partner with First Nations communities to improve care and health outcomes.

This beautiful piece of artwork is in a prominent public place where staff, consumers, volunteers, and visitors will engage with and enjoy every day.

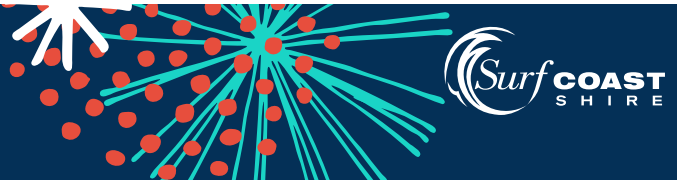
It is hoped that this mural will serve as a catalyst for conversations and bring people together, being a powerful tool for raising continual awareness of the story of First Nations people.

Thank you to those who attended the unveiling celebration. Hesse was honoured to welcome Gulidjan woman Ebony Hickey who delivered the Welcome to Country.

Thank you to Lexi and Mia, the Winchelsea Primary School Captains, who assisted in the unveiling of this artwork installation.



Changes to bin collections this Christmas



Our collection truck drivers will have the day off on Christmas Day (Monday 25 December). As they work to catch up, this means **ALL residential bins across Surf Coast will be emptied on the day following your usual collection day.**

So during the week of Christmas only:

- ❖ bins normally emptied on Monday will be emptied on Tuesday
- ❖ bins normally emptied on Tuesday will be emptied on Wednesday
- ❖ bins normally emptied on Wednesday will be emptied on Thursday
- ❖ bins normally emptied on Thursday will be emptied on Friday
- ❖ bins normally emptied on Friday will be emptied on Saturday.

Collections will return to the normal schedule from Monday, 1 January 2024.

Extra collections

All residential properties that receive a kerbside bin service will also receive an **extra landfill** and **extra recycling bin** collection during the festive season.

To check how the bin collection changes affect you, and to see when your extra collections will be:

- ❖ Download **SCRRApp** (the Surf Coast Rubbish & Recycling App) at surfcoast.vic.gov.au/SCRRApp
It's free and provides bin night reminders, an A-Z recycling guide, and notifications about unexpected changes to collections e.g truck breakdowns
- ❖ Download and print a PDF calendar at surfcoast.vic.gov.au/calendars
- ❖ Visit surfcoast.vic.gov.au/mybin and enter your address



Confused on bin night?

SCRRApp's got you sorted.

surfcoast.vic.gov.au/SCRRApp



NOTICE OF APPLICATION FOR A PLANNING PERMIT



1 Merrijig Drive (PO Box 350) Torquay, 3228
P. (03) 5261 0600 E. planningapps@surfcoast.vic.gov.au

The land affected by the application is located at:	12 Barwon Terrace, WINCHELSEA
The application is for a permit to:	Buildings and works for the redevelopment of the Winchelsea swimming pool, including one lap pool, one leisure pool, one children's pool, pavilion and a plant room.

The applicant for the permit is: Surf Coast Shire

The application reference number is: **23/0437** *Please quote this number when making enquiries*

You may look at the application and any documents that support the application at the office of the responsible authority:

Surf Coast Shire, 1 Merrijig Drive, Torquay VIC 3228
This can be done during office hours, 8:30am – 5:00pm Monday to Friday, and is free of charge.

You can view the application online through Council's eplanning portal:
<https://eplanning.surfcoast.vic.gov.au/Account/Login.aspx>

Any person who may be affected by the granting of the permit may object or make other submissions to the responsible authority. An objection must be made to the responsible authority in writing, include the reasons for the objection and state how the objector would be affected.

The responsible authority must make a copy of every objection available at its office for any person to inspect during office hours free of charge until the end of the period during which an application may be made for review of a decision on the application. A copy of all objections is provided to the Permit Applicant. If you object, the Responsible Authority will tell you its decision.

The Responsible Authority will not decide on the application before: **12 January 2024** (or until a minimum of 14 days after the last notice is given)

A big thanks to the Face Painter at the Community Market



Benji and Charlie

A thankyou from the mother of these children for the splendid work of the face painter at the market.



Pilk Purriyn Traditional Owner truth-telling to return on January 26



Wadawurrung Elder Aunty Mary Shuttleworth and Surf Coast Shire Council Mayor Liz Pattison

Surf Coast Shire

Following on from a successful event last year, Wadawurrung Traditional Owners will again welcome the Surf Coast community to Country in Torquay on January 26, 2024 for reflection at Pilk Purriyn – sunrise – and deep listening to historic truth-telling.

The event will return for a second year against the backdrop of Warri Dja (Sea Country) at Cosy Corner, welcoming people of all ages, genders, races, religions and backgrounds.

Starting at 5.30am with sun rising on the water, it will include a traditional Welcome to Country, Smoking and dance ceremonies.

At its heart, Traditional Owners will share truths seeking to deepen community understanding of the traumas, loss and hurt that colonisation brought upon the First Peoples of the land.

Wadawurrung Traditional Owners Aboriginal Corporation will again present the Pilk Purriyn event in collaboration with Surf Coast Shire Council, and supported by Great Ocean Road Coast and Parks Authority, GeelongPort and Give Where You Live.

About 2000 people attended the inaugural Pilk Purriyn event earlier this year. With the audience expected to increase in 2024, organisers are encouraging people to register for this free event via surfcoast.vic.gov.au/PilkPurriyn to help gauge numbers and enable sharing of updates.

The Cosy Corner space is a unique natural environment of Cultural significance to Wadawurrung People. Gathering together before first light, the emphasis will again be on deep listening and meaningful, compassionate presence.

Aunty Mary Shuttleworth, Wadawurrung Elder: "Pilk Purriyn meaning sunrise is symbolic of a new day. Through truth telling, Wadawurrung People will be able to share our history and the story of the world's oldest living culture.

"It is an opportunity to move forward and give others a greater understanding of why we invite them to koling wada ngal – walk alongside to achieve self-determination."

Surf Coast Shire Council Mayor Liz Pattison: "Council recognises that January 26 is a day of sorrow rather than celebration for First Nations people and is proud to support Wadawurrung Traditional Owners and the Pilk Purriyn event, respectfully acknowledging so much loss and hurt.

"Our community demonstrated earlier this year a profound wish to participate in deep listening and to be there as allies for First Nations people. We encourage community members to again take this opportunity to recognise truths and a cultural richness spanning over 60,000 years."

Great Ocean Road Coast & Parks Authority Chief Executive Officer Jodie Sizer: "As we come together at sunrise on Warri Dja for Pilk Purriyn, we proudly stand with Wadawurrung Traditional Owners, recognising the profound importance of cultivating a space for respectful reflection and healing.

"In supporting this event, we reaffirm our commitment to amplifying the voices, values, rights, and interests of all Rights Holders throughout the Great Ocean Road region."

Organisers are committed to making this event as accessible as possible, while respecting the Cultural significance and natural beauty of this outdoor site.

Anyone who may find the terrain or lighting difficult is advised to arrive early with a support person if required. Those with additional access or support needs are encouraged to contact organisers directly at pilk-purriyn@surfcoast.vic.gov.au

People can find more information, including event FAQs via surfcoast.vic.gov.au/PilkPurriyn



Winchelsea Community House and Shire Hall

Monday-Friday 9am -2pm (03) 52672028
28 Hesse Street, Winchelsea
www.winchhouse.org.au reception@winchhouse.org.au

Chatty Cafe

When: Friday mornings 10.30am-12 noon
Winchelsea Shire Hall Space
No bookings required
We will have our Chatty Café Volunteers present to welcome you.

Singing Group

When: Wednesday afternoons
4.45pm-6.00pm, Winchelsea Shire Hall Space

Pro-rata term fee payable

Crochet Group

When: Alternate Saturday afternoons
1.30pm, Winchelsea Community House Space
\$5 per session

Knitting Group

Come along and learn to knit or bring your knitting project and come and chat with others.
Winchelsea Community House
When: Thursday mornings 10.30am-12 noon

Drop in – Makers' Create

Where in Winch can you?
Mono print your very own Christmas cards?
Design beautiful, felted Christmas table place mats and coasters?
Paint? Draw and skill share?

Winchelsea Community House Star Room
Cost \$25 per session
All materials provided.
Bookings: hinterlandartschool@gmail.com
PH: 0493 479 447

Community Houses such as ours provide programs and activities to learn new skills, brush up on your existing skills and more than anything to connect with others in your community and reduce social isolation. New skills may help you with employment and build your confidence to in turn help others. Activities such as singing and sound healing help your mind and reduce any unwanted stresses. Have a think about doing something for yourself and join in our activities.

TRENCHES & HOLES PTY LTD.



PHILLIP ROBERTSON
☎ **0427 672 945**
WINCHELSEA

- **General Earth Works**
- **Driveways**
- **Trencher**
- **Kanga Loader**
- **Grader**
- **Excavator Work (3.5 & 6.5 Tonne)**
- **Tip Truck**
- **Rock Breaker**
- **Post Holes & Shed Footings**

A.B.N 74006896898

WAZZA'S
WATER CARTAGE

Stainless Tanker Up to 22,000 ltr loads
Barwon Water Registered

Domestic & Rural Water Supplies

Call Wazza
Mob: 0428 877 260
Email: wazza@wazzas.com.au Web: wazzaswater.com

M & L DRAYTON PLUMBING SERVICES

REG No 24356 C/A No C02594

- Domestic and Rural Plumbing
- Roofing
- Sewerage & Septic
- LPG & Natural Gas Connections
- Motorised Drain Cleaning
- Backhoe Hire

Phone Mark 5288 7244
PO BOX 98 WINCHELSEA 3241
Mobile 0428 520 142

Community Bank Surf Coast teams up with Elf Squad for families in need this Xmas

Kelly Turner

We at the Community Bank Surf Coast, encompassing our branches in Winchelsea, Anglesea, and Lorne, are thrilled to announce our support for the Elf Squad this festive season! Elf Squad Inc. is an amazing, fully-registered charity based in Geelong, now in its seventh glorious year of bringing smiles and joy. Their dedication to supporting families in need across the Greater Geelong and G21 region has touched countless lives.

This Christmas, we invite you to join us in making a difference! Our three branches are proud to serve as collection points for both new toy donations and cash contributions to the Elf Squad.

Remember, every donation counts! Whether it's a toy to brighten a child's Christmas morning or a cash donation, your generosity will bring immense joy and relief to families in need. And the best part? All donations are 100% tax-deductible.

Let's spread the magic of Christmas together! Drop by any of our branches to make your contribution. Let's show how our community can come together to support each other in the spirit of the season.

Thank you for joining us in this heartwarming initiative. Together, we can make this Christmas a memorable one for every child and family in our community.



Release your Inner Elf...

THANK-YOU FOR DONATING

NEW Toys & Tax-Deductible Funds

Elf Squad Inc. is a fully-registered, Geelong-based charity in its seventh year. All donations are 100% tax-deductible and used to support hundreds of families-in-need across the Greater Geelong and G21 region. Proudly supported by Community Bank Surf Coast. Please drop off New Toys to the Wincheslea, Anglesea or Lorne Bendigo Bank Branches for collection.

HELP a local child SMILE :-)
www.elfsquad.com.au

REGISTERED CHARITY

QR code

@elfsquad

Bendigo Bank

Community Bank Surf Coast

COVID Report

Victoria w/end Oct 8
Victorian Department of Health

Cases reported – 1356
Cumulative cases- 2,995,445
Hospitalised - 274
Deaths reported – 68
Cumulative COVID deaths – 8891

Now is the time to be extra careful!

- Wearing a mask can help protect you & those around you from COVID.
- Wearing a high-quality & well-fitted mask can stop or slow the spread of the virus.

To learn more about recommended face masks visit: <https://go.vic.gov.au/3sBjgvi>

Protect yourself & your loved ones from COVID with these 5 other steps:

- Stay home if sick
- Test before visiting
- Let fresh air in or meet outdoors if you can
- Stay up to date with your vaccinations
- Talk to your GP about COVID medicines.

COVID-19 booster vaccination

Booster doses, also known as additional doses, can be given after a primary vaccination course. They protect you from getting very sick with newer variants of COVID-19.

Immunity wanes over time so your protection against the virus is low. Recharge your immunity with a booster dose.

If you are eligible for a booster, you can take it 6 months following a previous dose.

Boosters are free for all Victorians. You can get them from your GP or community pharmacy

2023 was not a year of YES for everyone

But at Jumpleads we believe saying YES is now more important than ever!

So in 2024, we'll continue to say YES...
YES to

- sustainability and environment
- locally led solutions
- advocacy for creatives
- developing leadership
- learning and growing together
- supporting grass roots change
- engagement, connection and healthy communities
- innovation and resilience
- developing common ground
- fostering changemakers
- equity, inclusion and care
- honesty, openness and truth telling
- giving first nations + people of all kinds, a voice
- mutual respect



Wishing you the happiest of holidays and the biggest YES you can muster for all your 2024 plans!

Jumpleads NFP is a social enterprise that "jump-starts" arts and community initiatives to change cultures and invigorate communities for a better future

Includes Make a Change and Pop Up Art programs

Find out more: www.jumpleads.net

Regional Office:
Suite 449 39-41 Williamson St
Bendigo 3550
Melbourne Office:
2C Percy St Prahran 3181
support@jumpleads.net
0483 104 361

All About

Mowers & Chainsaws

Repairs to all makes and models of ride on mowers, domestic mowers, pumps, chainsaws, brushcutters and small engines.

Trading Hours: Mon - Fri 8am - 5pm Saturday 8am - 12 noon

5267 2266 Cnr Princes Hwy & Lennox St Winchelsea
www.allaboutmowers.com.au
accounts@allaboutmowers.com.au

FERRIS CDX STIHL BRIGGS & STRATTON VICTA

52672192 R & K Creative Framing
for all your framing needs

free quotes
pension discount
specialist in Age & Disability Modifications

Ray & Kim Jansen
10 Witcombe st
Winchelsea 3241

Ray The Home Maintenance HANDYMAN
abn 47928623462

0414672192

- DECKS - SAUNAS
- FLOORING - PERGOLAS
- WEATHERBOARDS
- HORSE SHEDS
- CLADDING - FENCES

ALL THINGS TIMBER AND MORE...

INSTAGRAM [guim_designs](https://www.instagram.com/guim_designs)

CALL PAT ON
0401 232 674

SERVICES AND ACTIVITIES IN WINCHELSEA

VLIN TRAIN SERVICES

TO MELBOURNE:

Mon - Fri 6:41 am, 7:57am, 11:14am, 2:08pm, 7:23pm
Sat - Sun 9:26am, 1:30pm, 7:18pm

TO WARRNAMBOOL:

Mon - Fri 8.56am, 11.55am, 2:50pm, 5.27pm,
6:45pm, 8:50pm
Sat - Sun 8:47am, 2:46pm, 8:34pm



COUNTRY WOMEN'S ASSOCIATION

7pm second Wednesday of month
Winchelsea Senior Citizens' Hall



WINCHELSEA SES

Every Wednesday
Visitors and inquiries welcome
0408 102 802



WINCHELSEA AND DISTRICT COMBINED PROBUS CLUB

Meets 1st Monday of the month at 10am.
Senior Citizens Rooms,
Harding St, Winchelsea.
New members always welcome.
Enquiries Linda 0439 817 263.

WINCHELSEA TRANSFER STATION

55 Cressy Road, Winchelsea

Monday	Closed	Tuesday	2pm-4pm
Wednesday	Closed	Thursday	2pm - 4pm
Friday	Closed	Saturday	1.30-3.30pm
Sunday	9.30-12.30pm		

Accepts household garbage, mixed commercial and industrial waste, mixed construction and demolition waste.

Accepts recyclable materials.

Accepts one recycle bin two waste bins.

Does NOT accept clean fill.



WINCHELSEA GIRL GUIDES

Our Unit meets at the Catholic Church Hall,
Harding St Winchelsea each Monday 4.30pm-6pm
All girls 5yrs- 15yrs Welcome!
Contact Yvonne Orchard 0448 672 630
or Bonnie Stokes 0401 386 274



1ST MODDA AND 1ST

WINCHELSEA SCOUT GROUP

Joeys: Tuesdays of school term 5-6pm
Cubs: Mondays of school term 6:30-8pm
Scouts: Tuesdays of school term 6:30-8:30pm
All at Modewarre Hall, Cape Otway Rd
Venturers: Wed at Walton's Rd Venturer Den
Contact Marie McPadden 0409 330147



BUS TO THE HUB

For reservations on the weekly bus
to the Eastern Reserve Hub,
please phone 52671202.

SURF COAST MOBILE LIBRARY

Hesse St, Fridays, 2pm-5pm
Surf Coast Mobile Library
parked in Hesse Street (outside Shire Hall)
Fridays between 2:00 and 5:00pm
unless it is a Public Holiday.

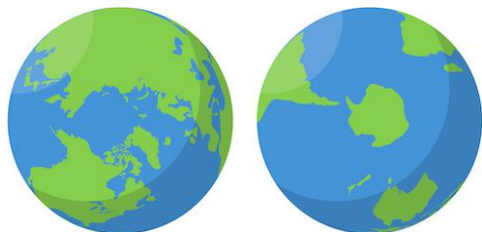
WINCHELSEA TAXI

0429 672 888 or 5267 2888

Wheelchair accessible
10 seater bus available.

WINCHELSEA PLAYGROUP

Every second Thursday 10am-12pm
St Thomas Anglican Church Hall
cnr Barwon Tce and Hopkins St, Winchelsea
Contact: Melissa 0456181268
Facebook - Winchelsea Playgroup 2019
New families welcome



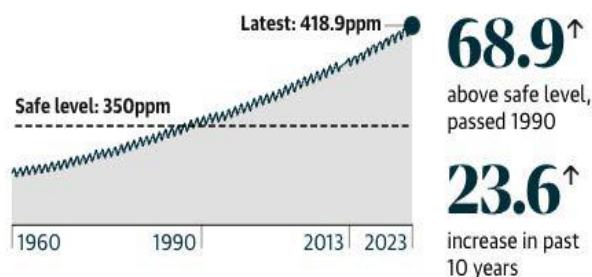
The Climate Report

Judy Cameron

The Australia Institute

\$11.1 billion spent on fossil fuel subsidies

Federal and state governments committed \$11.1 billion in fossil fuel subsidies in 2022-23. This masks the true cost of fossil fuels and prevents clean sources of energy from being competitively priced. Despite the federal government's pledges to help Pacific countries adapt to the existential threat of climate change, Australia is giving far more aid to fossil fuel companies than to our Pacific neighbours. In fact, the \$11 billion the Government committed to fossil fuel subsidies in 2023 could fund the renewable energy transition for eight Pacific countries seven times over.



Planting Guide Dec-Jan

SOUTHERN VICTORIA PLANTING	Dec	Jan
Beans, Bush	X	X
Beans, Climbing	X	
Beetroot	X	X
Broccoli	X	X
Brussels Sprouts	X	X
Cabbage	X	X
Cabbage Kai & Bok Choy		X
Carrots	X	X
Cauliflower	X	X
Celeriac	X	X
Celery	X	X
Chicory	X	X
Cress	X	X
Cucumber	X	
Endive	X	X
Gherkins	X	
Kale	X	X
Kohlrabi	X	X
Kon Choy	X	X
Leeks	X	X
Melons	X	
Onions, Spring		X
Parsley	X	X
Parsnips	X	X
Peas		X
Potatoes	X	X
Pumpkin	X	
Radishes	X	X
Rhubarb, Crowns	X	X
Rhubarb, Seed	X	
Salsify	X	X
Shallots, cloves		X
Silverbeet	X	X
Spinach		X
Squash	X	
Swedes		X
Sweetcorn	X	
Tomatoes	X	X
Turnips		X
Zucchini	X	X

Simco Plumbing and Gasfitting

24/7 Emergency service Ph:0400643976

- All General Plumbing and Gasfitting
- Roof and Gutters, Hot Water service changeover
- Split Systems, Air Conditioning and Wood Heaters
- Irrigation, Septic and Treatment plants
- Excavation, Bobcat and Tipper
- Rain water Tank installation
- Renovations and Extensions
- Gas conversions and servicing

Simon McGillivray

Lic:109610. Free quotes, Fast and friendly service



**Your Taxation
&
Superannuation
Specialists.**

Winchelsea

5267 2673

www.surftax.com.au

vent1g10064

SERVICES AND ACTIVITIES IN WINCHELSEA

VLINE TRAIN SERVICES

TO MELBOURNE:

Mon - Fri 6:41 am, 7:57am, 11:14am, 2:08pm, 7:23pm
Sat - Sun 9:26am, 1:30pm, 7:18pm

TO WARRNAMBOOL:

Mon - Fri 8.56am, 11.55am, 2:50pm, 5.27pm,
6:45pm, 8:50pm
Sat - Sun 8:47am, 2:46pm, 8:34pm



COUNTRY WOMEN'S ASSOCIATION

7pm second Wednesday of month
Winchelsea Senior Citizens' Hall



WINCHELSEA SES

Every Wednesday
Visitors and inquiries welcome
0408 102 802



WINCHELSEA AND DISTRICT COMBINED PROBUS CLUB

Meets 1st Monday of the month at 10am.
Senior Citizens Rooms,
Harding St, Winchelsea.
New members always welcome.
Enquiries Linda 0439 817 263.

WINCHELSEA TRANSFER STATION

55 Cressy Road, Winchelsea

Monday	Closed	Tuesday	2pm-4pm
Wednesday	Closed	Thursday	2pm - 4pm
Friday	Closed	Saturday	1.30-3.30pm
Sunday	9.30-12.30pm		

Accepts household garbage, mixed commercial and industrial waste, mixed construction and demolition waste.

Accepts recyclable materials.

Accepts one recycle bin two waste bins.

Does NOT accept clean fill.



WINCHELSEA GIRL GUIDES

Our Unit meets at the Catholic Church Hall,
Harding St Winchelsea each Monday 4.30pm-6pm

All girls 5yrs- 15yrs Welcome!

Contact Yvonne Orchard 0448 672 630
or Bonnie Stokes 0401 386 274



1ST MODDA AND 1ST

WINCHELSEA SCOUT GROUP

Joeys: Tuesdays of school term 5-6pm

Cubs: Mondays of school term 6:30-8pm

Scouts: Tuesdays of school term 6:30-8:30pm

All at Modewarre Hall, Cape Otway Rd

Venturers: Wed at Walton's Rd Venturer Den

Contact Marie McPadden 0409 330147



BUS TO THE HUB

For reservations on the weekly bus
to the Eastern Reserve Hub,
please phone 52671202.

SURF COAST MOBILE LIBRARY

Hesse St, Fridays, 2pm-5pm

Surf Coast Mobile Library
parked in Hesse Street (outside Shire Hall)

Fridays between 2:00 and 5:00pm

unless it is a Public Holiday.

WINCHELSEA TAXI

0429 672 888 or 5267 2888

Wheelchair accessible
10 seater bus available.

WINCHELSEA PLAYGROUP

Every second Thursday 10am-12pm
St Thomas Anglican Church Hall
cnr Barwon Tce and Hopkins St, Winchelsea

Contact: Melissa 0456181268

Facebook - Winchelsea Playgroup 2019

New families welcome



Café La Hoot

have you tried 'owl' coffee?

1 willis st cafelhoot@gmail.com 0407 528 999

direct TEMPORARY FENCING

FOR HIRE - SUPPLIED & ERECTED - 7 DAYS
GEELONG - BELLARINE - COLAC - SURF COAST
PHONE CAM 0417 310 800

DownRyte Excavations



- Excavations
- Drilling and Piling
- Rock Placement
- Tree and Stump Removal

Sean Hunwick

Mobile: 0409 447 288
Email: downryte@activ8.net.au

CONCRETER

Alister Aitken

No job to big or small

- Driveways - Carports - Crossovers - Footpaths - Sheds Slabs - Colored Concrete - Concrete sealing - Exposed Aggregate - & more -

Call or text for a no obligation free quote

Servicing our local Winchelsea & Surrounding Areas

alaitken.aa@gmail.com or Alister - 0411 871 950

A.B.N 47 228 574 460

NO MATTER WHAT YOUR PROBLEM, DODDS ELECTRIX CAN DEFUSE THE SITUATION.

RURAL, INDUSTRIAL, COMMERCIAL, DOMESTIC
PHONE 0438 887 360
EMAIL: DODDSY@FASTMAIL.FM
PO BOX 36 BIRREGURRA, VICTORIA 324
REC: 17520 ABN: 64 581 250 880



5234 6585 0417 385 984

For all your septic tank, grease traps and interceptor pits servicing. Locally owned and operated

Est. 2011

Dance ENROLMENTS NOW OPEN!

Winchelsea Dance Classes

REGISTER NOW

JAZZ - THEATRICAL TAP - HIP-HOP
CLASSICAL BALLET - CONTEMPORARY
Pre-School - Adults
Beginner - Advanced Levels

www.melsdancecentral.com.au

Kyeema

Rural Fencing Pty. Ltd.

Jason Armstrong & Jay Hawker

1080 Prices Lane, Ombersley, Victoria 3241

0419 565085 (Jason)
0416 585817 (Jay)

kyeemafam@kyeemafam.com.au

Also incorporating domestic and rural tree trimming services.

mainly music

est. 1990

Fun, Interactive music sessions for pre-school children (0-4 y.o.) and parents/caregivers

When: Mondays from 10 to 11 am (runs during school terms)

Where: St Thomas' Hall
25 Barwon Tce.

To Enquire ring: 0407838256

Winchelsea Primary School Rainbow Run for Fun!

David Peel

On Monday 9 December the Winchelsea Primary School Community got together for their annual Rainbow Run for Fun.

Students were encouraged to fundraise from family and friends with the intention of raising as much money as possible for our school.

The efforts from all students and families didn't go unnoticed as we ended up raising close to \$6000 from the event. The money will go towards a revamped play space with cubby houses in and around our BBQ area.

We were treated to some warm weather which made for great viewing for all involved.

Students loved running laps of our oval track whilst being coloured and sprayed with water by staff.



But the highlight of the event was no doubt the 10 lucky students who had the privilege of sliming 10 unlucky teachers!

It was awesome to see so many parents, carers and families in attendance on the day.

A big thanks to Brent Hay who led this event for the school.

Plans are already in place for next years' run!



Winchelsea Bowls Club

Ph 5267 2241

[Facebook.com/Winchelsea-Bowls-Club-533783333344345/](https://www.facebook.com/Winchelsea-Bowls-Club-533783333344345/)



WINCHELSEA GOLF CLUB

Ph 5267 2660

Great little country 9 hole golf course run by an enthusiastic team of volunteers.



Digital Antennas

Have the professional do the job correctly

- Latest Digital Technology
- New Kingray Boosters
- Fully Equipped Mobile Vans With Qualified Technicians stocked with large range of cables & connectors
- TV Brackets
- Digital TV Antennas with: Heavy duty construction
- Durable plastics for harsh Australian conditions
- Manufactured by our team in Geelong



**WE SERVICE THE BELLARINE,
THE SURFCOAST AND GEELONG**

**SALES &
INSTALLATIONS**

Hi-Gain Antennas P/L
1/21 Leather St, Breakwater
Ph: 5222 2711

Monday – Thursday 7.30am – 4.30pm
Friday 6.30am – 10.30am





THE GIVING TREE

Spread
love & hope
this holiday season

EVERY DONATION COUNTS!

How to be part of our Christmas Charity initiative raffle:

- Bring a gift for charity (local families in need)
- Leave us a Google Review
- Refer a friend in for an initial consultation (we will give you a discount voucher)



Prizes:

1. 1 FREE (additional) adjustment or an initial consultation voucher to give to someone
2. \$60 voucher at Sweet Thyme
3. 5 coffees at Wholefoods

*Free ADDITIONAL Adjustment is only available to existing Practice Members

*Free ADDITIONAL Adjustment is only in addition to existing care, not a replacement for a pre-scheduled appointment

*Free ADDITIONAL Adjustments will be allocated between 14th December and 21st December



ONE BODY CHIROPRACTIC

We are spreading love and hope over this holiday season! We are excited to announce our Christmas Charity giving tree, our intention behind this initiative is to give back to local families in need over the festive season.

Christmas is just around the corner, (sorry to remind you) so be sure to enter our Christmas Charity initiative raffle and spread love and hope over this festive throughout the community!

To enter you can do one or all of the following to get more entries!

- Bring in a gift for charity - (local families in need)
- Leave us a Google review.
- Refer a friend in for an initial consultation.
- See flyer for PRIZES.

We are so excited to share this with our wonderful community.

One Body Chiropractic
4/21 Hesse Street, Winchelsea PH 03 5267 2240
*Here for your Vitality,
Dr Emily and the One Body Team*





- ❑ LOG BOOK SERVICE
- ❑ AUTO ELECTRICAL
- ❑ TOWING
- ❑ AIR CONDITIONING
- ❑ CLUTCH & BRAKES
- ❑ TYRES
- ❑ WHEEL ALIGNMENT
- ❑ BATTERIES

CAR, TRUCK REPAIRS & Roadworthys

PH: 5267 3001

Mob: 0417 137 457

17 Alsop Drive

R.A.K. DAVIS & SONS

CARTAGE CONTRACTORS

WINCHELSEA

SUPPLIER OF ALL QUARRY MATERIALS, TRUCK HIRE

CARTAGE OF GRAIN, LIME, GYPSUM & SUPER

LANDSCAPE & GARDEN SUPPLIES

56 WILLIS ST, WINCHELSEA

Ph – 5267 2094

Ryan – 0438 672 281

Email: rakdavis@bigpond.com

HESSE
RURAL
HEALTH



- Acute Care*
- Urgent Care*
- Residential Aged Care*
- Community Nursing
- Dietetics
- Physiotherapy
- Occupational Therapy

- Diabetes Education
- Social Support Groups
- Counselling
- Home Care
- Health Promotion

* services from Winchelsea only

www.hesseruralhealth.com.au

P: (03) 5267 1200 E: reception@hesse.vic.gov.au

Funeral Planning

Working out what is best for you.

Prepaid Funerals, Funeral Bonds, Pay-by instalments...

There are many options and its important to make the right choice.

Alyson Burchell will be available by appointment to answer any questions about funerals and planning ahead.



For more information or to make an appointment contact Sue on 5221 4788

Tuckers Community Office,
Surf Coast Taxation Services, 22 Willis Street,
Winchelsea

**First Tuesday of the Month,
by appointment 10.00am - 12.00pm**

Caring for families since 1883

Tuckers
Funeral & Bereavement Service
...for a life worth celebrating

5221 4788
www.tuckers.com.au





Example of similar scale Bowls Lighting project (courtesy of Webb Australia)

Winchelsea Bowls Club Sports Lighting Project

The Winchelsea Bowls Club is located at 45 Hesse St, Winchelsea. Although an aspiration of the club for many years, in November 2022, this sports lighting project was proposed to the Surf Coast Shire via the on-line community project proposal portal. In April 2023, detailed investigation of the project began with assistance from Council's community Project Development Program and involving a project working group comprising Bowls Australia Club board members and a Bowls Australia representative. The group worked with sports lighting consultant, Webb Australia and by October 2023 the sports lighting project investigation was complete with designs to a tender ready stage and a detailed cost estimate for the \$151,157 project.

Need

With projected growth in Winchelsea's population and current extensive use of the Bowls Club facilities for pennant, coaching, social bowls and social functions, sports lighting has become the club's priority capital project. Lighting will enable the club to compete in a night competition with other clubs in the district (Colac, Inverleigh and Bannockburn) and also expand and make more accessible, their social bowls program.

Project Scope

The project will deliver a corner lighting system with LED luminaires designed to minimise glare to bowlers and minimise light spill to surrounding areas. The lighting system meets relevant sports lighting standards and Bowls Australia guidelines for night competition, with lighting also able to be dimmed down for training, social bowls and other bowls related events.

Funding Opportunity

Given the project is fully designed, scoped and costed, an application will be submitted to the Victorian Government's *Local Sports Infrastructure Fund* (Community Sports Lighting), closing on 13 December 2023. The club has committed 25% of the total project cost, meeting the required funding ratio of \$1 (local) : \$3 (State). The outcome should be known by May 2024.

For Further information and Feedback

Winchelsea Bowls Club (03) 5267 2241
Surf Coast Shire via info@surfcoast.vic.gov.au

Drop-in Session at the Bowls Club- the club is committed to listening to and addressing any questions or concerns that anyone may have. Drop in anytime between **4pm and 6pm on Friday 15 December 2023**. Come and have a bowl while you are here.

Mental Health Support/Coaching
Phone Tanya on 0490 340 076
www.awakenlifecoaching.com.au



Call Matt - 0418 319 357
mbwoodplumbing.au

Servicing Winchelsea & surrounds

- General maintenance & blocked drains
- Gas fitting & hot water service upgrades
- New homes & renovations

WINCHELSEA LIONS CLUB

PAPER RECYCLING

Paper depot rear of Senior Citizens Rooms
 Harding Street
NEWSPAPERS, MAGAZINES, PHONE BOOKS WANTED



RAISING FUNDS FOR OUR TOWN & DISTRICT
 5267 2011 or 0408 520 606



Commercial | Industrial | Domestic

HAMILTONS
Truck & Bobcat Hire
Give Aaron a Call
0438 438 623

Winchelsea Men's Shed



For The Community

51 Hesse Street

Every Wednesday from 9:30am

New members always welcome

For more detail contact:
Ray Atkinson (Co-ordinator)

0407 839 139

or

winchmensed@gmail.com

Need a job done?
Woodworking jobs, furniture repairs, small jobs.
Drop in and talk to us.

'Reliable equipment matters to me.'

Need new equipment to keep your business growing? Or is your old equipment running out of steam? If so, it's time to talk with a business specialist.

If reliable equipment matters to you, call Julie on 04 6621 7889 or search 'Bendigo Bank Equipment Finance'.

Community Bank · Winchelsea & District 5267 3189



Terms, conditions, fees, charges and lending criteria apply. Bendigo and Adelaide Bank Limited, ABN 11 068 049 178 AFSL / Australian Credit Licence 237879. (1678614-1720176) (03/22) OUT_31643351, 13/09/2023

• Pixie Wash
Mobile Doggie Care
 Dogs up to 20kg
Pixie Heath
0417 586 080





Moriac Veterinary Clinic
0447 781 089
PHONE 24 HOURS
784 Hendy Main Road Moriac
info@moriacvet.com
www.moriacvetclinic.com.au
HOURS // Monday - Friday: 8am - 5pm



MCGREGOR PROJECT SERVICES

Winchelsea Local Resident & Business

Contact:
Cam McGregor
Production Tree Nursery
Ph: 0437 700 754

Services offered

- Agricultural/horticultural plantings (natives/exotics) for bulk windbreaks, screenings, driveway features.
- Irrigation – Full service – Commercial/Industrial/Domestic
- Revegetation services – agricultural/roadways/excavation sites/rail/civil
- Drainage Infrastructure – wetlands, matting, fabric
- Consulting
- Maintenance – contract/Ad hoc
- Contract tree/plant growing

Production



Winchelsea Medical Clinic

Located at 36 Main Street, Winchelsea 3241

For any enquires or bookings please contact the clinic on 5292 8028.
 Or visit our website: www.winchmc.com.au

Opening Hours:
 Monday - Friday 8:00am - 5.00pm
 (Monday Evening Clinics available and selected Saturdays)




 Our clinic accepts online bookings via the app called HotDoc. Download the app on the App Store or Google Play or head to our website.

- Domestic and Commercial hire equipment
- Industrial welding gas
- Digging and Earthmoving equipment
- New trailers and trailer repairs
- Firewood
- Stockists of Royal Oil Lubricants products
- LPG for domestic and commercial requirements

Give Chris and the Team a call on **5232 1177** or email info@colachire.com.au
www.colachire.com.au
101 Wallace St Colac 3250



GREAT Bundle Deal on Bosch Hot Water... FROM ELGAS

Buy any Bosch Bluetooth continuous flow hot water model - 16Litre, 20Litre or 26Litre and **Receive \$100* in Elgas bonus LPG gas credits**

From **\$780** or \$52.50 per month

*For more details: www.elgas.com.au/appliances/boschcplflow-16-20-26-lpg-bundle-sale

AND... for new customers, an additional \$80 WORTH OF LPG GAS CREDITS when you open a new LPG Gas account with Elgas**

NO CONTRACT TO SIGN

**Further details can be viewed at www.elgas.com.au

Ask about the Elgas Easy Payment Plan - 12 months interest free*** on selected LPG appliances

***Further details can be viewed at: www.elgas.com.au/epp

Automatic tanker gas bottle refill **OR** gas bottle exchange refill is available for home or business....

Call today or visit our website for our many customer benefits and latest offers

131 161
www.elgas.com.au

ELGAS



SIMPLE STORAGE SOLUTIONS

- Personal & Business Storage
- Boat, Caravan & Vehicle Storage
- High Security Premises
- Individually Alarmed Units
- Electric Gate Access
- 7 Day Access & CCTV

YOUR STORAGE PROBLEMS SOLVED

5267 3116
 6 ALSOP DRIVE, WINCHELSEA 3241

NATURAL GAS CONNECTIONS

M. & L DRAYTON PLUMBING SERVICES

YOUR LOCAL LICENSED

- PLUMBERS (24356)
- GAS FITTERS
- GAS CONVERTERS
- CARBON MONOXIDE TESTING

MARK 0428 520 142



Lupton BUILDERS

SPECIALISING IN QUALITY



REGISTERED Building Practitioner

- NEW HOMES
- EXTENSIONS
- RENOVATIONS
- ALTERATIONS
- DECKS
- PERGOLAS
- CARPORTS
- VERANDAHS
- RE-GLADS
- BATHROOMS
- WINDOW REPLACEMENTS

LEIGH LUPTON
0438 840 104

CHRIS LUPTON
0407 681 514

LEIGHLUPTON17@GMAIL.COM

Est. 1977

Winchelsea Star



Since 1977

ISSN 2202-6851



9 772202 685002

Chiropractic - Remedial Massage - Myotherapy - Sound Healing - Breathwork



Chiropractic care for:

- Stress & Anxiety
- Pain Management
- Body Aches & Tension
- Family Wellbeing
- Poor Sleep
- Health Longevity

03 5267 2240 Shop 4/21 Hesse St Winchelsea



<https://onebodychiropractic.com.au/>



HF RICHARDSON

PROPERTY

Servicing all your real estate needs

Ken McDonald **0418 524 150**



Residential | Rural Lifestyle | Agricultural Farms



Charles Stewart & Company are leading livestock and real estate service providers covering Victoria's south west

	LIVESTOCK
Jamie McConachy	0418 522879
Peter McConachy	0408 522878
Matt Nelson	0428 315400
Gerard Bohan	0400 005541
Lachie Barclay	0438 346291
John Thornton	0408 526367
Dougal McIntyre	0439 575612
Ross Spitty	0419 539717

	REAL ESTATE
Michael Stewart	0418 520467
Daryl Osborne	0419 388341
Anthony McDonald	0418 593597
Gerard Bohan	0400 005541
Stephen Lugg	0417 556098
Josh Lamanna	0417 586032



Office
56 Bromfield Street, Colac
www.charlesstewart.com.au

Green Lead Electrical

Connecting you to a greener future
REC 23618

0467 097 101



Servicing Geelong & the Surf Coast

Specialising in all residential electrical work including:

- Switch board & lighting upgrades
- Outdoor lighting
- Electrical safety checks
- Energy efficient LED lighting
- Ceiling sweep fans & ventilation
- Energy saving advice

Phone Martin Wilkinson:

0467 097 101

greenlead@outlook.com

1132268-CG18-14

