

With Distinguished Guest
Lecturer **Dr. Raymond Ashley**



EXPEDITION TO ANTARCTICA

Aboard the New Expedition Cruise Ship *DIANA*

January 6 – 17, 2027

Dear Friends,

Visiting Antarctica is like stepping back in time to an era when the world was untouched and new. There are no human sounds—only the wild calls of seabirds, the distant breath of whales, and the haunting cries of seals echoing across a vast wilderness of ice and sea.

Join us during the long, luminous days of the austral summer as we explore the Antarctic Peninsula and the islands that trace its rugged coastline. Encounter seals, whales, and seabirds in their natural habitat, and witness hillsides and shorelines alive with thousands of penguins. Cruise through brilliant blue waters, where shifting light dances across sculpted icebergs, ancient glaciers, and soaring snow-capped peaks.

We are delighted to feature distinguished guest speaker **Dr. Ray Ashley**, retired President and CEO of the San Diego Maritime Museum, who will share his experience and expertise through engaging lectures and discussions throughout the voyage.

Our vessel for this journey is the state-of-the-art expedition ship, Swan Hellenic's *Diana*, designed specifically for polar exploration. The ship's limited guest capacity, advanced technical and mechanical systems, and experienced officers and crew, make it the vessel of choice for exploring Antarctica in safety and comfort.

We look forward to welcoming you on this extraordinary voyage to explore the natural beauty of Antarctica.

Warm regards,

Thalassa Journeys

ABOUT THALASSA JOURNEYS

Thalassa Journeys is a tour company founded by the men and women who, working as Travel Dynamics International, pioneered educational and cultural travel in the 1970s in partnership with the leading educational, research, cultural and performing arts institutions in the United States. For more than 45 years our mission was to provide robust, intellectually stimulating experiences to lifelong learners who see travel as an opportunity to expand their understanding of the world and their place in it. This same mission guides us today. We believe that the most rewarding travel experiences happen when small groups of like-minded individuals share an enthusiasm for engaging with the richly varied environments of the world, and with the history, culture, ideas and ideals of the people who inhabit them.

DISTINGUISHED GUEST LECTURER

DR. RAYMOND ASHLEY



Dr. Ray Ashley retired as President/CEO of the San Diego Maritime Museum in January 2025 after thirty years in that role. He holds a BA in Anthropology from UCSD, an MA in Maritime History and Museum Studies from East Carolina University, and a PhD in History from Duke University.

Dr. Ashley has been sailing for most of his life since spending his senior year in high school on the schooner *Westward* and is a licensed captain, is the *Star of India's* navigator and frequently has the chance to sail other vessels of the Museum's active fleet including the State tallship *Californian*, steam yacht *Medea*, Swift Boat PCF 816, *Pilot* and most recently, the galleon *San Salvador*, which he has sailed more than 7000 miles on Museum expeditions.

Dr. Ashley is a contributor to several professional and historical publications including *Mains'l Haul*, where he has been author of the publication's introductory column since it became a peer review journal, *American Neptune*, and *Sea History*. He has been curator of several of the Museum's major exhibitions including *Ironclads*, *Charting the Sea*, the award winning *Cook, Melville, and Gauguin: Three Voyages to Paradise*, and *The Art of Navigation*, currently presented at the Maritime Museum. Dr. Ashley has led Museum sponsored member expeditions to a variety of locations, including Northern Europe, Isle of Man, the Mediterranean, the South Pacific, Baja California, all eight California Channel Islands and several Pacific Heritage Tours in the galleon *San Salvador*. Dr. Ashley has taught "Public History and Museum Studies" as well as "Maritime Archeology" for USD, co-taught "Age of Sail" for UCSD, and has taught the Museum course "The History and Practice of Navigation."

In 2014 Dr. Ashley was recognized with lifetime achievement awards by both the Maritime Alliance/Blue Tech in San Diego, and the International Maritime Heritage Alliance, for the construction of the Galleon *San Salvador*.

In recognition for his efforts in building the *San Salvador*, in 2016 Dr. Ashley was knighted with the rank of Knight Commander, Order of Isabella la Catholica by direction of his majesty, King Felipe VI of Spain.

He lives in Chula Vista with his wife Carlynn (with whom he once sailed a 25' boat through the South Pacific), and is currently writing a book about the Circumnavigation of Lord Anson in the ship-of-the-line *Centurion* 1740-1744.

THE **NEW** 192-GUEST EXPEDITION CRUISE SHIP **DIANA**



Oceanview Stateroom



Balcony Suite



Swan Restaurant



Swimming Pool



Observation Lounge

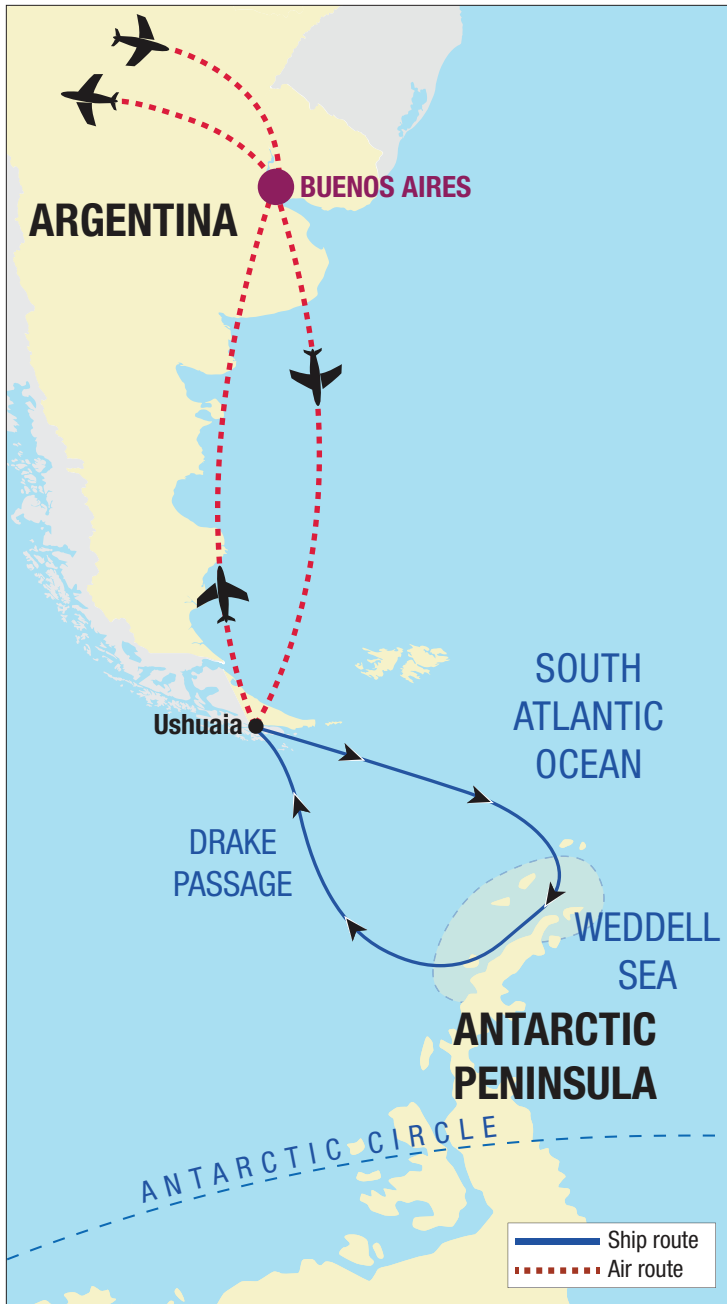
Built in Finland, and launched in April 2023, Swan Hellenic's *Diana* is a new generation expedition cruise ship. Although at 12,100 tons the ship is large enough to accommodate more than 350 passengers, *Diana* will accommodate a maximum of 192 guests in 96 spacious staterooms and balcony suites. The low guest density results in one of the most generous indoor and outdoor space-to-guest ratios among cruise ships.

Featuring the latest advances in technology and engineering, *Diana* is among the world's first environmentally responsible ships. Equipped with hybrid engines and a unique water filtration system, *Diana* leaves a minimal footprint. For cruising in Polar regions, the ship meets the stringent requirements of the new Polar Code with its high PC5 Category A ice strengthened hull and other advanced features. A computer-controlled Dynamic Positioning System allows the ship to maintain position without anchoring. Operated by a complement of 135 experienced European officers and international crew members, *Diana* will

carry a fleet of Zodiacs, versatile landing boats, and kayaks. Powerful stabilizers provide a smooth ride.

Diana's interior spaces exude sophisticated elegance, with most rooms opening to panoramic views of the sea. All staterooms and suites face outside and are equipped with private facilities, climate control, TV, Wi-Fi and USB connections and other amenities. Of the ship's 96 staterooms, 76 have balconies. Public areas include a spacious observation lounge equipped with state-of-the-art facilities for lectures and presentations; a club lounge; a restaurant that accommodates all guests at one seating; an outdoor café/bar that surrounds the heated swimming pool; a wellness area with gym, spa, and sauna with an adjoining outdoor jacuzzi; library; beauty salon; and an infirmary that is attended by a full-time doctor and nurse. The ship also features expansive open-deck areas. Two elevators connect all decks. Attentive service is provided on a 24-hour basis. The outstanding cuisine is complemented by fine wines at lunch and dinner.

ITINERARY



Antarctic landscape

Wednesday, January 6, 2027

DEPART USA

Depart home for Buenos Aires, Argentina.

Thursday, January 7

BUENOS AIRES, Argentina

Arrive in Buenos Aires, the capital of Argentina. Transfer to the *Sofitel Recoleta Hotel* (or similar). In the evening, meet fellow travelers and your trip director for a welcome dinner at a local restaurant. (D)

Friday, January 8

BUENOS AIRES/USHUAIA/SHIP EMBARKATION

Transfer to the airport for the group flight to Ushuaia, claimed to be the world's southernmost city, located in Argentina's Tierra del Fuego, between the famed Beagle Channel and the mountains. On arrival, transfer to the pier to embark on the *Diana*, which will begin cruising early this evening. As the ship cruises the Beagle Channel, enjoy a spectacular vista of glaciers and misted mountains. (B, D)



Diana in Antarctica

Saturday, January 9 and Sunday, January 10

AT SEA

Attend lectures and enjoy the ship's facilities as the *Diana* cruises through the Drake Passage to Antarctica. Look for Albatross, Cape Petrels, and whales that may accompany the ship on its passage. (B, L, D)

Monday, January 11 to Thursday, January 14

EXPLORING ANTARCTICA

During these days, we will explore the pristine wilderness of the Antarctic Peninsula and its surrounding islands. The Peninsula is a narrow finger of land that separates the Bellingshausen and Weddell Seas. As *Diana* cruises through scenic waterways, witness breathtaking panoramas of blue glaciers and jagged, snow-capped mountains. Aboard the ship's Zodiacs, we cruise among ice floes and explore penguin rookeries. The exact nature of our daily activities will depend on ice and wind conditions, but we expect to make landings at such places as Paradise Harbor, where humpback and minke whales are often sighted offshore; Port Lockroy to visit the historic "Base A" established by the British Antarctic Survey in 1944 and now maintained as a living museum; and Deception Island, known for its volcanically-heated hot springs and for the remains of abandoned whaling huts and extraordinary wildlife, including the largest colony of Chinstrap penguins on the Antarctic Peninsula. Navigating through the magnificent Lemaire, Neumayer and other protected channels is also planned. Also attend briefings with the ship's expedition staff. (B, L, D)

Friday, January 15 and Saturday, January 16

AT SEA

Watch for whales and seabirds - and enjoy onboard lectures and the ship's amenities - as *Diana* cruises back to Ushuaia. (B, L, D)

Sunday, January 17

USHUAIA, Argentina/SHIP DISEMBARKATION/ BUENOS AIRES/HOME

Disembark in Ushuaia. Transfer to the airport for the group flight to Buenos Aires to connect with flights homeward. (B)



Albatrosses



Adelie penguins



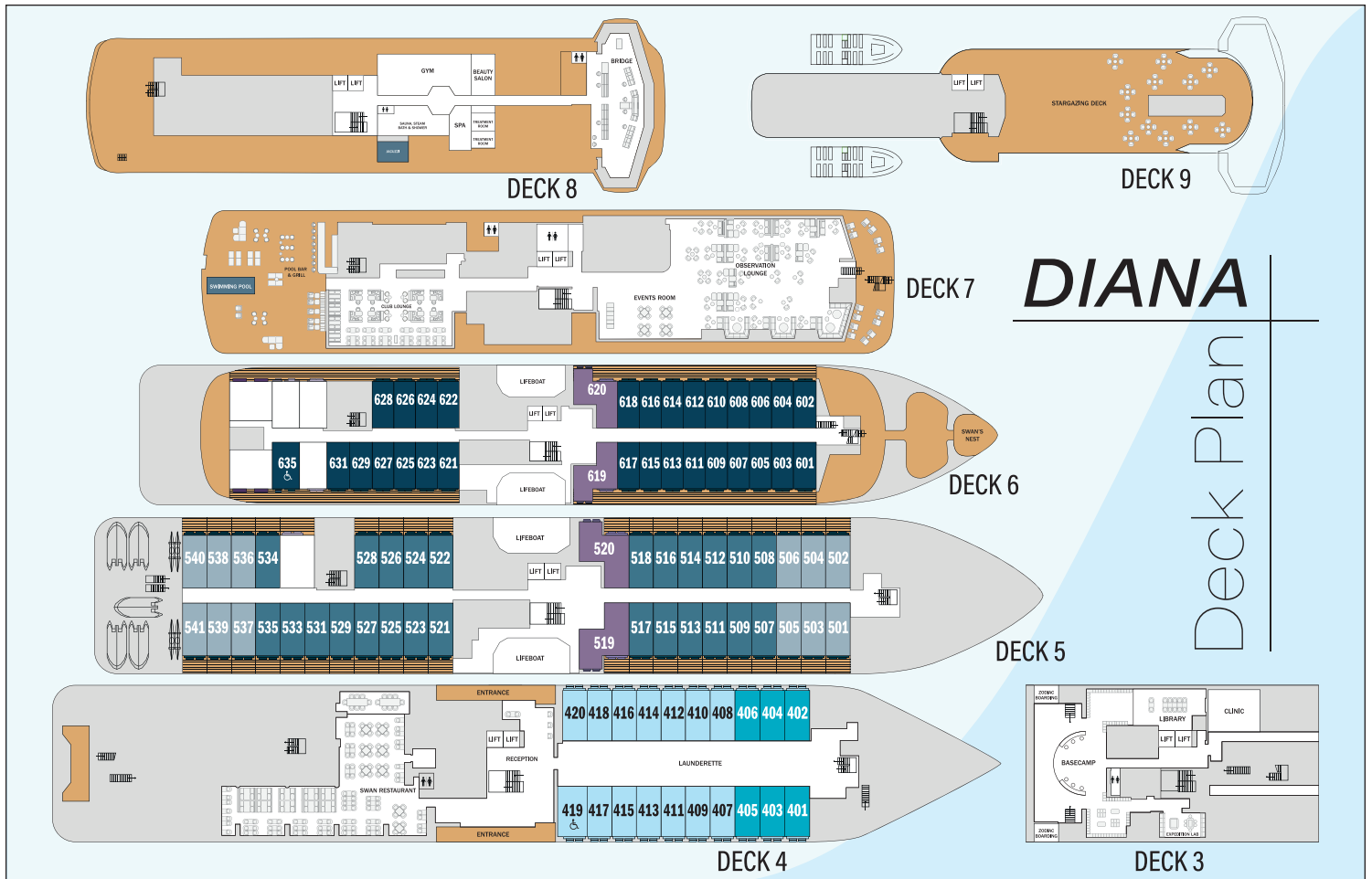
Crabeater seals, Antarctic Peninsula



Humpback whale



Admiring the Antarctic scenery



All accommodations aboard *Diana* are spacious staterooms and balcony suites. They are elegantly decorated, face outside, affording sea views, and include a queen-size bed that can be arranged as two twin beds, a spacious bathroom, mini-refrigerator, safe, ample closet space, climate control, telephone, TV, Wi-Fi, and USB connections, as well as other amenities.

CATEGORY	DESCRIPTION	RATES PER PERSON / DOUBLE OCCUPANCY
E	Oceanview staterooms with two large oval windows. 206 sq. ft. Deck 4. Staterooms 401–406.	\$ 12,890
D	Oceanview staterooms with two large oval windows. 206 sq. ft. Deck 4. Staterooms 407–420.	\$ 13,490
C	Suites with balcony & living room area. 300 sq. ft. Deck 5. Suites 501–506, 536–541.	\$ 14,990
B	Suites with balcony & living room area. 300 sq. ft. Deck 5. Suites 507–518, 521–529, 531–535.	\$ 15,690
A	Suites with balcony and living room area. 300 sq. ft. Deck 6. Suites 601–618, 621–635.	\$ 16,490
AA	Suites with large balcony, separate bedroom & living room. 474 sq. ft. Decks 5 & 6. Suites 519, 520, 619 & 620.	\$ 20,790

FOR SOLO TRAVELERS | A limited number of cabins are available for single occupants in Category D at 120% of the per-person, double occupancy rate, and in Categories C, B, and A at 150% of the per-person, double occupancy rate.

LOYALTY REWARD PROGRAM

Travel on this cruise program and enjoy savings of **\$400 to \$900** per person on your next voyage with **THALASSA JOURNEYS** aboard a Swan Hellenic ship. Savings are determined by the stateroom category booked and is applicable when you reserve your trip within 30 days of the completion date of **EXPEDITION TO ANTARCTICA**

This saving cannot be combined with other offers and is subject to change.

PROGRAM INCLUSIONS

The rates are all-inclusive. There are no hidden costs and no additional charges such as shore excursions and embarkation and port charges. Other than the international airfare and expenses of a personal nature, all else is included.

Specifically, the rates include the following:

- One night at the *Sofitel Recoleta Hotel* (or similar) in Buenos Aires.
- Welcome dinner at the hotel.
- Round trip group flight between Buenos Aires and Ushuaia.
- Cruise aboard the *Diana*, as described in the itinerary.
- Lectures and discussions with Dr. Raymond Ashley.
- Airport/hotel/pier transfers and handling of luggage on arrival and departure dates.
- Complete program of shore landings and activities organized by the expedition leaders and naturalists.
- All meals aboard the ship, with a selection of wines, beer and soft drinks during lunch and dinner.
- Welcome and farewell cocktail receptions aboard the ship hosted by the captain.
- Open bar with select alcoholic beverages.
- Coffee, including espresso and cappuccino, tea and soft drinks throughout the day and night.
- 24-hour room service.
- Gratuities to the ship's crew, porters and drivers.
- Basic Wi-Fi aboard the ship.
- The services of an experienced Thalassa Journeys Trip Director.
- All local taxes and service charges, including port and embarkation taxes.
- Use of rubber boots for shore landings.
- Complementary expedition parka for you to use and keep.
- Complete pre-departure material

NOT INCLUDED: International airfare; travel insurance; expenses of a personal nature; any items not mentioned in the itinerary or the above inclusions.

ACTIVITY LEVEL

This program includes expedition excursions including Zodiac cruises and shore landings that may involve walking and standing for 1-3 hours at your own pace on uneven, icy, or rocky terrain. Guests should be comfortable navigating inclines, slippery surfaces, and climbing in and out of Zodiacs for shore excursions. Conditions can be cold and windy, so sure footing and good balance are important. Layered clothing, and a spirit of adventure will help you get the most from this unforgettable experience.

REGISTRATION

TJLL 27D-0106

Enclosed is my check or credit card no. for \$ _____ (\$ 2,000 per person) as a deposit to hold _____ place(s) on **EXPEDITION TO ANTARCTICA**, January 6 - 17, 2027 with Thalassa Journeys. I understand that final payment is due one hundred twenty (120) days prior to departure and is payable by check or credit card. We accept Visa, Mastercard, or Discover credit cards.

For reservations, please call Thalassa Journeys at: (866) 633-3611 or email: reservations@thalassajourneys.com

or make a check payable and mail with this registration form to:

Thalassa Journeys: 8815 Conroy-Windermere Rd., Suite 406, Orlando, FL 32835

Visa

Mastercard

Discover

No. _____

Exp. _____ 3- or 4-Digit Security Code _____

PLEASE SELECT STATEROOM CATEGORY IN ORDER OF PREFERENCE

1st choice _____ 2nd choice _____ 3rd choice _____

Double Occupancy

Single Occupancy (Inquire for rates)

PREFERRED BED CONFIGURATION

Double _____ Twin _____

FIRST MIDDLE LAST (AS ON YOUR PASSPORT)

FIRST MIDDLE LAST (AS ON YOUR PASSPORT)

ADDRESS _____

Each participant must sign below: I/We have read the "General Information" section and agree to its terms.

CITY/STATE/ZIP _____

TELEPHONE (HOME) _____

(CELL) _____

SIGNATURE _____

DATE _____

EMAIL _____

SIGNATURE _____

DATE _____

GENERAL INFORMATION

PAYMENT SCHEDULE: A deposit of \$2,000 per person is required to reserve space on the tour. Final payment is due 120 days prior to departure. Payment can be made by personal check or charged to a credit card.

CANCELLATIONS & REFUNDS: All cancellations received more than 120 days prior to departure are subject to a \$400 per person administrative fee. Cancellations received 119 to 90 days pre-departure will be assessed a penalty equal to 20% of the total program cost per person. Cancellations received 89 to 61 days pre-departure will be assessed a penalty equal to 70% of the total program cost per person. Cancellations received within 60 days of departure are subject to 100% cancellation penalties. Requests for cancellations must be made in writing. No refunds will be made for any part of this program in which one chooses not to participate.

INSURANCE: We strongly recommend the purchase of trip cancellation insurance, which is available for coverage of expenses in conjunction with cancellation due to illness or accident. Baggage insurance is also recommended. In the event that you must cancel your participation in a travel program, trip cancellation insurance may be the only source of reimbursement.

ITINERARY: The itinerary, accommodations and arrangements are subject to change at the discretion of Thalassa Journeys.

RESPONSIBILITY: Please read carefully the following terms and conditions, which constitute the sole, legally enforceable agreements between the traveler and Thalassa Journeys. Thalassa Journeys acts solely as agents for the traveler with respect to all transportation, hotel and other tour arrangements. In that capacity, we exercise all reasonable care possible to ensure the traveler's safety and satisfaction, but, we neither assume nor bear any responsibility or liability for any injury, death, damage, loss, accident, delay or irregularity arising in connection with the services of any ship, airplane, train, automobile, motor coach, carriage or other conveyance, or the actions of any third-party, involved in carrying the traveler or in affecting these tours. We are not responsible for damages, additional expenses, or any other losses due to cancellation, delay or other changes in air or other services, sickness, weather, strike, war, civil disturbances, acts or threats of terrorism, travel warnings or bans, termination or suspension of war risks or other carrier insurance, quarantine, acts of God or other causes beyond our control. All such losses must be borne by the traveler, and tour rates provide for arrangements only for the time stated. In the event of cancellation, delay or rescheduling mandated by any of the aforesaid causes beyond our control, the traveler shall have the option of accepting in lieu of the original tour such rescheduled tour or other substituted tour(s) as may be offered by us, or else, receiving a refund of as much of such advance tour expenditures as we are able to recover on the traveler's behalf from carriers, third-party tour vendors, etc., but, we shall not have any obligation or liability to the traveler beyond the foregoing. We reserve the right to make alterations to the tour's itinerary and to substitute hotels, transportation methods, or lecturers if this is required. We reserve the right to cancel, delay, or reschedule any tour prior to departure, and, so long as this is not due to any of the aforesaid causes beyond our control, the traveler shall be entitled to a full refund of all monies paid to that point if he/she so desires. No refund shall be made for any unused portion of any tour. By forwarding their deposit(s), the traveler certifies that he/she and/or their dependents, minors or others covered thereby do not have any mental, physical or other condition of disability that could create a hazard for them or other travelers. We reserve the right to decline to accept or to decline to retain any person as a member of any tour should such person's health, condition or actions adversely affect or threaten the welfare or safety of other travelers or impede the tour. Baggage or valuables brought on the tour shall be transported, handled or stored at the traveler's risk entirely, and, we shall bear no liability or responsibility for any damage or other loss thereto. Resolution of any disputes arising hereunder shall be effected exclusively in the state or federal courts presiding in Florida, pursuant to applicable Florida law.

RATES: Tour costs are based upon current airfares, tariffs, and currency values. While we do everything possible to maintain the listed prices, they are subject to change.

**CST 2138603-50
ST 42048**



Beyond the ordinary

Thalassa Journeys
8815 Conroy-Windermere Road, Suite 406
Orlando, FL 32835

PRSR STD
U.S. Postage
PAID
Brentwood, NY
Permit No 36

TJLL 27D-0106

Join Dr. Raymond Ashley on EXPEDITION TO ANTARCTICA

For Reservations and Information, Please Call **866-633-3611** or
Email: reservations@thalassajourneys.com



Get close to the scenery and wildlife with the ship's fleet of Zodiacs