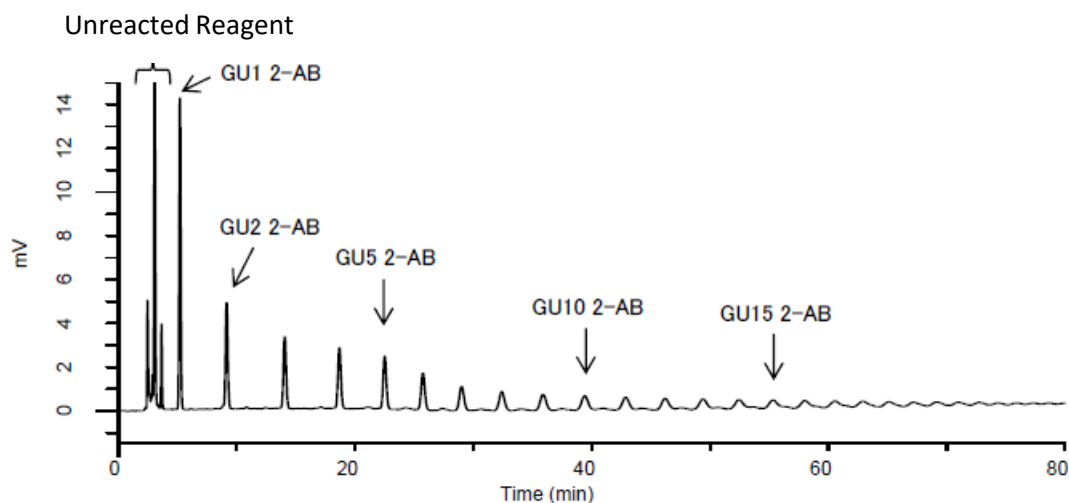


When analyzing glycans, Fluorescent derivatization method is often used before measurement by HPLC. Although large amounts of unreacted derivatizing reagents remain in the solution immediately after the derivatization reaction, only unreacted reagents can be removed by performing solid-phase extractions prior to injecting them into the HPLC.

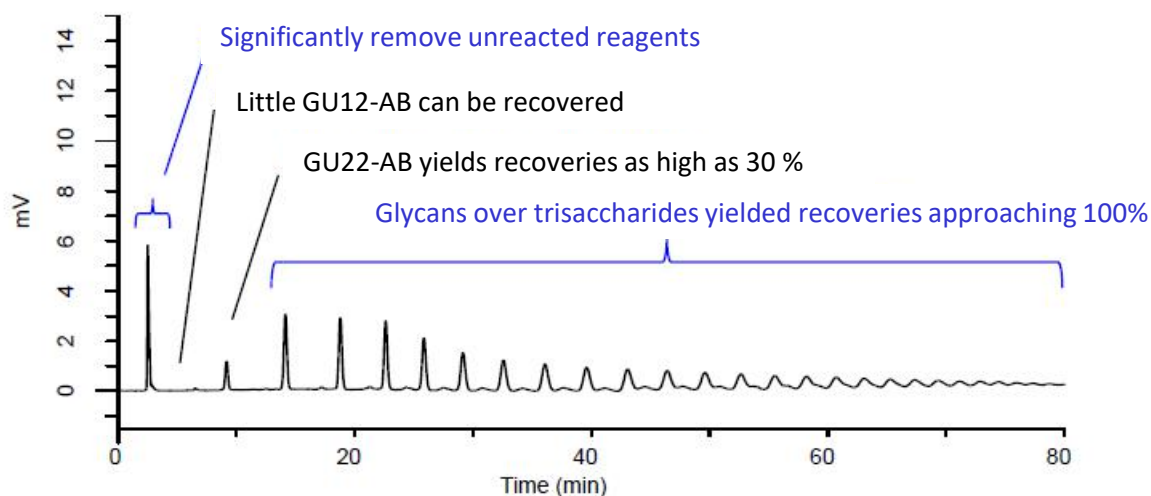
Using MonoSpin, a spin-type solid-state column, separate sugar chains derivatized with 2-aminobenzamide (2-Aminobenzamide, 2-AB) from unreacted reagents. As a result of evaluating the two types of MonoSpin Amide and MonoSpin NH<sub>2</sub>, both of them recover sugar chains of **more than trisaccharide**.

(Y. Yui, C. Aoyama, S. Ota)

### Sample Solution Measurement Without Purification



### Sample Solution Measurement After Purification using MonoSpin Amide



#### HPLC Condition

**System** : GL7700 HPLC System

**Column** : InertSustain Amide (5  $\mu$ m, 250 X4.6 mm I.D.)

**Eluent** : A) CH<sub>3</sub>CN

B) 50nM HCOONH<sub>4</sub> in H<sub>2</sub>O (pH 4.4, HCOOH)

**Flow Rate** : 1.0 mL/min

**Column Temp.** : 50 °C

**Eluent** : FL Ex 330 nm Em 420 nm  
(FL7753 FL Detector)

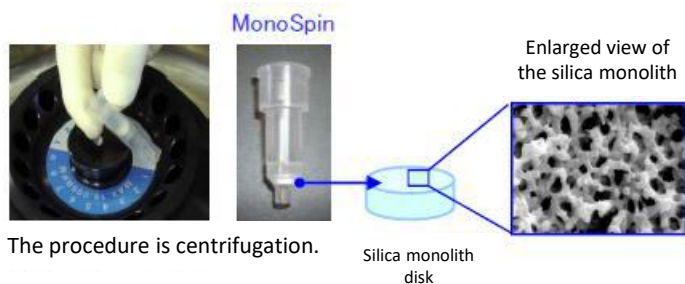
**Injection Volume**: 25  $\mu$ L

**Sample** : 2-AB Labeled Glucose  
Homopolymer Ladder

Time [min]	A (vol%)	B (vol%)
0	80	20
20	65	35
80	50	50
90	50	50

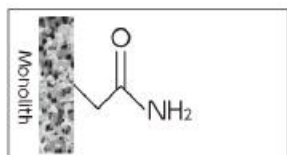
## ◆ MonoSpin

The MonoSpin series is a spin-column using silica monoliths with uniform continuum pores. Silica monoliths with high porosity are used as carriers, so they can be passed through by centrifugal manipulation alone. Therefore, it is possible to purify and concentrate samples by a simple operation in a short time. It is also suitable when the sample volume is small because the bed volume is small and the liquid can be cut off.



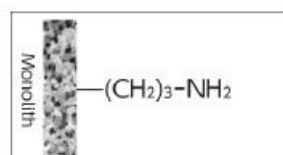
## ◆ Purification using MonoSpin

### MonoSpin Amide



A column modified amid group. Mainly used as HILIC mode and is optimal for extracting wide range of hydrophilic compounds.

### MonoSpin NH<sub>2</sub>

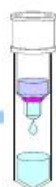


A column modified aminopropyl group on its surface of silica monolith. It is used as not only HILIC mode but also as weak anion-exchange columns

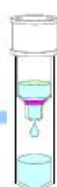
### Purification Procedure



Centrifuge



Centrifuge



Centrifuge



Centrifuge



Centrifuge: 9,000 x g 1 min

#### 1. Conditioning

Solution A 200  $\mu$ L



Solution B 200  $\mu$ L

#### 2. Conditioning

Sample Solution

200  $\mu$ L

#### 3. Rinsing

Solution B 200  $\mu$ L

#### 4. Eluent

Solution A 200  $\mu$ L

**Purified Sample**

#### Solution A

Water: Acetonitril = 50:50:0.1 (v/v/v)

#### Solution B

Water : Acetonitril = 10:90:0.2 (v/v/v)

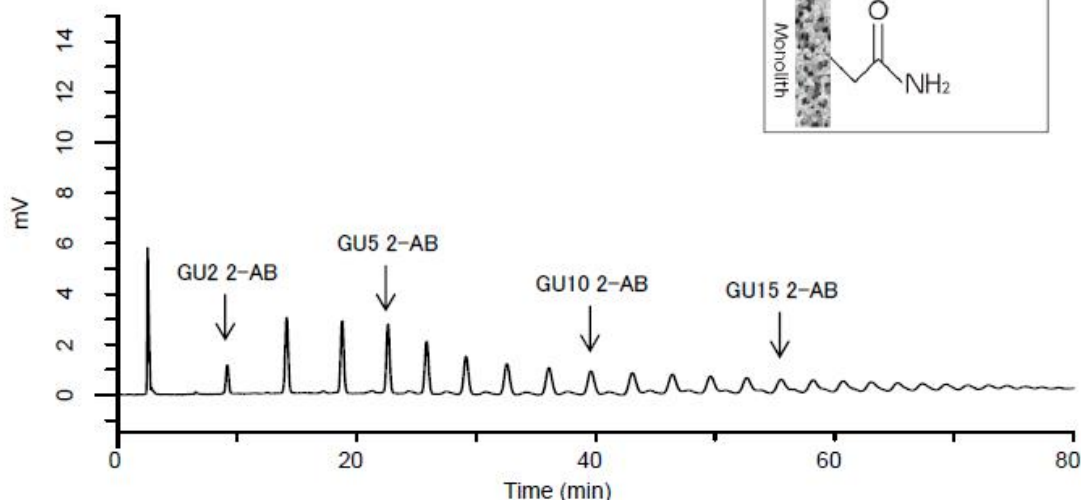
#### Sample Solution

In this study, 10 $\mu$ L of water and 180 $\mu$ L of acetonitrile were mixed with 10 $\mu$ L of a solution containing 2-AB sugar chains dissolved in DMSO:acetic acid=70:30 (v/v).

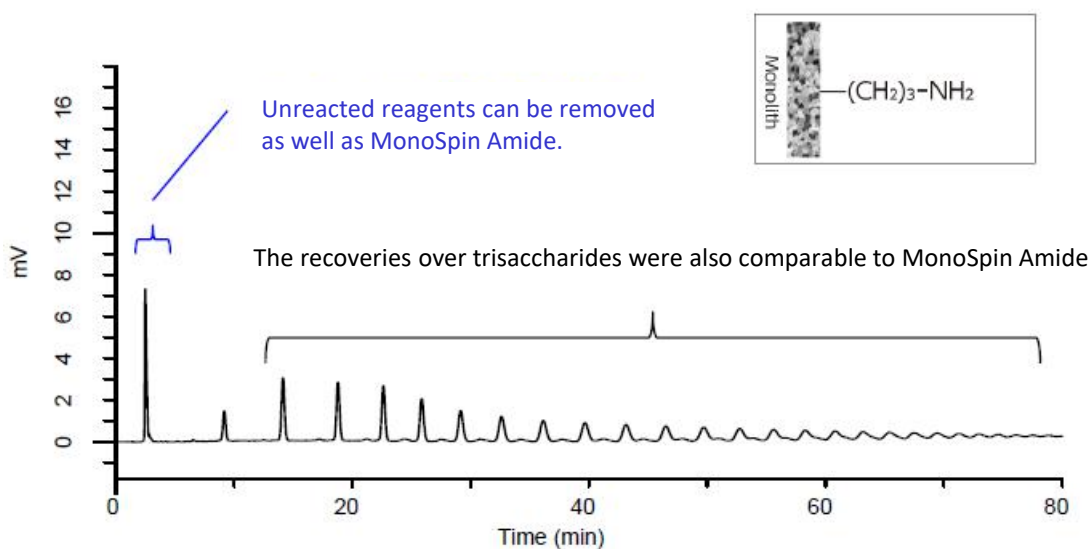
## If MpnoSpin NH2 is Used Instead of MonoSpin Amide

MonoSpin NH2 works not only in the HILIC mode but also in the negative ion-exchange mode, but the effects of this study were almost equivalent to those of MonoSpin Amide.

### Purification with MonoSpin Amide



### Purification with MonoSpin NH2



GL Sciences disclaims any and all responsibility for any injury or damage which may be caused by this data directly or indirectly. We reserve the right to amend this information or data at any time and without any prior announcement.

#### **GL Sciences, Inc. Japan**

22-1 Nishishinjuku 6-Chome  
Shinjuku-ku, Tokyo,  
163-1130, Japan  
Phone: +81-3-5323-6620  
Fax: +81-3-5323-6621  
Email: [world@glsc.co.jp](mailto:world@glsc.co.jp)  
Web: [www.glsciences.com](http://www.glsciences.com)

#### **GL Sciences B.V.**

De Sleutel 9  
5652 AS Eindhoven  
The Netherlands  
Phone: +31 (0)40 254 95 31  
Email: [info@glsciences.eu](mailto:info@glsciences.eu)  
Web: [www.glsciences.eu](http://www.glsciences.eu)

#### **GL Sciences (ShangHai) Ltd.**

Tower B, Room 2003,  
Far East International Plaza,  
NO,317 Xianxia Road,  
Changning District.  
Shanghai, China P.C. 200032  
Phone: +86 (0)21-6278-2272  
Email: [contact@glsciences.com.cn](mailto:contact@glsciences.com.cn)  
Web: [www.glsciences.com.cn](http://www.glsciences.com.cn)

#### **GL Sciences, Inc. USA**

4733 Torrance Blvd. Suite 255  
Torrance, CA 90503  
Phone: 310-265-4424  
Fax: 310-265-4425  
Email: [info@glsciencesinc.com](mailto:info@glsciencesinc.com)  
Web: [www.glsciencesinc.com](http://www.glsciencesinc.com)

#### **International Distributors**

Visit our Website at:

<https://www.glsciences.com/company/distributor.html>