



# **3** SOUTH FLANK MOBILE ACCESS PLATFORM PROGRAM

**LEADING THE WAY IN SCAFFOLD REDUCTION**



**PERTH**  
(08) 9459 8600  
**KALGOORLIE**  
(08) 9021 8300

**ADELAIDE**  
(08) 8231 1513  
**NEWMAN**  
(08) 9175 1164

**DARWIN**  
(08) 8963 5621  
**MT ISA**  
(07) 4743 6458

✉ [sales@bendtechgroup.com.au](mailto:sales@bendtechgroup.com.au)  
🌐 [bendtechgroup.com.au](http://bendtechgroup.com.au)

2-10 Kewdale Road, Welshpool WA 6106



## MOBILE ACCESS PLATFORM PROGRAM

# INDEX

<b>OVERVIEW</b>	<b>///</b>	<b>2</b>
<b>PLATFORM DESIGN</b>	<b>///</b>	<b>4</b>
<b>GENERAL PURPOSE PLATFORMS</b>	<b>///</b>	<b>8 - 17</b>
<b>SPECIALISED PLANT PLATFORMS</b>	<b>///</b>	<b>19 - 39</b>
<b>SPECIALISED CONVEYOR PLATFORMS</b>	<b>///</b>	<b>41 - 43</b>
<b>SPECIALISED REFURBISHMENT PLATFORMS</b>	<b>///</b>	<b>45 - 49</b>
<b>FIXED INSTALLATIONS</b>	<b>///</b>	<b>51 - 52</b>

## OVERVIEW

South Flank is a greenfield mine and brownfield processing hub expansion created adjacent to and within the Mining Area C (MAC) operation. It is designed as a sustaining mine to replace the 80 Mtpa of ore from Yandi, which is ramping down from FY21.

The new facilities include mining, inflow, processing, outflow circuits, and will expand the MAC Hub to ~145Mtpa, making it the largest operating iron ore hub in the world.

Historically in BHP Western Australia Iron Ore (WAIO), scaffold has been used extensively during major plant shutdowns for provision of temporary access for inspection and maintenance activities. BHP is reducing reliance on scaffold by transitioning to mobile, permanently and purposely configured access and/or maintenance platforms. Benefits of such Access Platforms in comparison to scaffold includes;

- REDUCED PROCESS PLANT DOWNTIME** – Access Platforms can be lifted in and out of the building, requiring minimal set up and removal time.
- IMPROVED SAFETY** – Risks associated with working at heights and dropped objects is minimised during set up and removal of Access Platforms.
- REDUCED LABOUR REQUIREMENTS** – Fewer labour resources required during shutdowns.

The overarching strategy for South Flank is to minimise the use of scaffold wherever practicable. To this end the work included in this scope covers the detailed design, fabrication and delivery of Access Platforms to enable inspection and maintenance activities from 'Primary Crusher' through to 'Train Load Out'.



This booklet catalogues the platforms developed for South Flank through the close collaboration of BHP and Bend-tech. This Program has enjoyed comprehensive engagement from Bend-tech designers through to the BHP Service Technicians.

Specific platform requirements have been collaboratively defined forming the basis of detailed designs provided by Bend-tech. Upon review and approval of these designs by BHP Engineering, Bend-tech progress Platform fabrication and delivery.

# PLATFORM DESIGN

Each PLATFORM is backed by BHP approved, Bend-tech compiled Drawings, Design Calculations & Manufacturer Data Records.

BHP Approved Technical Queries provide dispensation from BHP Standards where appropriate.

<b>BHP</b>	ORE HANDLING - AREA C STOCKPILE COS APRON FEEDER ACCESS PLATFORM CALCULATION REPORT
<b>DESIGN DATA</b>	
NUMBER	DESD-867-S-12095/0
DESCRIPTION	ORE HANDLING - AREA C STOCKPILE COS APRON FEEDER ACCESS PLATFORM CALCULATION REPORT
OFFICE OF ORIGIN	Metis Design and Engineering
WRITTEN BY	Mordcaei Jacobs
CHECKED BY	Charlie Guilloteau
TITLE OF CHECKER	Principal Engineer (WA)

**BHP Billion Iron Ore Pty Ltd**  
A.B.N. 46 008 700 981  
City Square  
125 St Georges Terrace  
PERTH WA 6000

**ENGINEERING DOCUMENT**

<b>MANUFACTURER DATA RECORDS</b>	PAGE 1 of 56
NUMBER	MDR-867-S-00015/0
DESCRIPTION	ORE HANDLING - AREA C STOCKPILE COS APRON FEEDER ACCESS PLATFORM MANUFACTURER DATA RECORDS
OFFICE OF ORIGIN	BENDTECH GROUP PTY LTD
CONTRACT:	
WRITTEN BY	HUI MEI YAP
4510564913	
CHECKED BY	JAMIE RICHARDS
TITLE OF CHECKER	PRODUCTION MANAGER

**STATUS REVIEW BY BHPIO RESPONSIBLE MANAGER/ENGINEER**

REVIEWED (Alpha or Numeric) ..... *87*

REVIEWED AS NOTED (Alpha or Numeric) .....

REVISE AND RESUBMIT (Alpha or Numeric) .....

REVIEWED BY BHPIO RESPONSIBLE MANAGER (Numeric) *Matt Wightman*  
Wightman, Matt  
2021 05 20 16:51:33  
+0800

Rev.	Date	Description	By	Checked	BHPIO
0	29/4/21	Issued for Client Approval	<i>[Signature]</i>	<i>[Signature]</i>	<i>[Signature]</i>

<b>Technical Query</b>	
TQ#	TQ No: TQ001
Forms	TQ Raised: 04/11/2020
	PO #: 4510112190
Drive Motor Access Platform Structural Design Queries	
Originator: Matt Wightman	
00001; 2117	Attachments: ST04 Slew Drive Motor Concept drawing; ST04 Slew Drive Motor Concept Brief Email from Steve Douce;
Part 1: Contractor to complete	
<p>Mobile Platforms says: Designed for a UDL of 5kPa plus a coincident vertical point load on any generally not feasible for these mobile aluminium access platforms to comply loading requirements as stipulated within AS1657 (2.5kPa and a 1.5kN point generally constructed to for the following wind conditions....etc ation as to what the acceptable design wind loading is on an operational, not is it 5m/s or 20m/s?</p>	
<p>Drive Motor is an Access Platform which is designed for access by a single ended that; orm be designed for loading stipulated within AS1657, i.e. a UDL of 2.5kPa position be granted for not meeting the loading requirements stipulated in ked with WLL.</p> <p>DC-S-00001 be that all mobile platforms are to be designed for operating, in wind loads up to 5m/s.</p> <p>TBA</p> <p>TBA</p> <p>05/11/2020</p>	

Page 1 of 3

# IN THE FIELD TRACKING OF PLATFORM LOCATION

A Teletrac Navman Asset Tracking Sensor is to be mounted on each of the PLATFORMS. This tracker will provide PLATFORM location twice daily to a web based viewing system.

To log into viewing system refer to Quick Reference Guide # 0165544.



**Teletrac**  
Navman

## IN THE FIELD REGULAR PLATFORM INSPECTIONS

Every user of a MOBILE PLATFORM shall conduct a thorough PLATFORM inspection prior to use.

Where a defect is found that compromises the safe use of the PLATFORM, an OUT OF SERVICE Tag shall be placed on the PLATFORM and the PLATFORM shall be removed from service until repaired by a competent person.

PLATFORM defects to be reported to RELIABILITY.





# GENERAL PURPOSE MOBILE PLATFORMS

 [www.bendtechgroup.com.au](http://www.bendtechgroup.com.au)



## GENERAL PURPOSE MOBILE PLATFORMS

# 600MM HIGH ACCESS PLATFORM

## AKA: MIGHTY MOUSE

### OVERALL DIMENSIONS (MM):

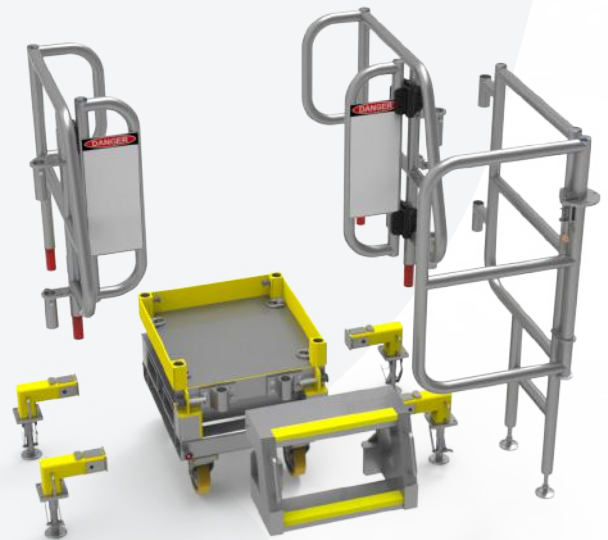
In transit (just base on castors): 700H x 810L x 662W

When erected without handrail extension: 1620H x 1085L x 1050W

When erected with handrail extension: 1620H x 1640L x 1050W

### DESCRIPTION:

- WLL: 150kg
- Tare Weight: 261kg
- 4 swivel castors + 4 outriggers
- Forklift pockets + lifting lugs
- Drawing # 864-S-12150
- Asset # OHP3-BG440-AP005



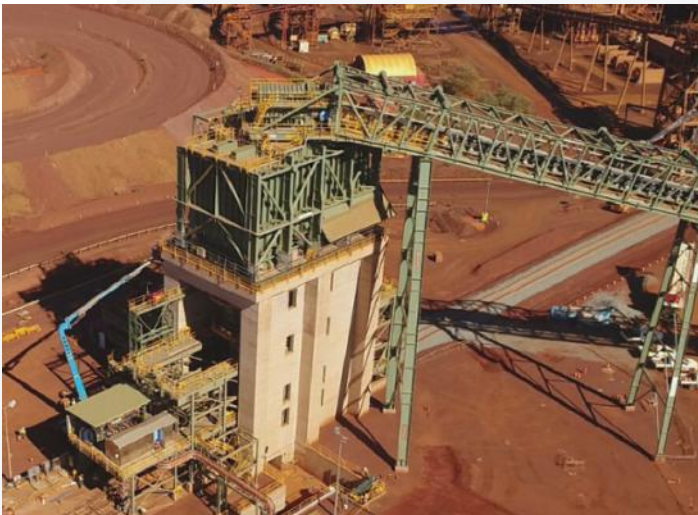
### CAUTION:

1. Platform only to be used on level and firm ground.
2. Platform only to be used when Handrail (LH + RH) + Stairs + Outriggers (4 off) installed.
3. Outriggers to be installed and engaged with ground at all times except when platform in transit.
4. Extension Handrail to be used where it will protect against a potential fall of 2m or more.

### IDEAL FOR:

Use in congested areas including walkways eg;

1. CV521 HEAD CHUTE WALKWAY removal
2. Access to 'D' & 'E' Chutes in SCREENING BLDG



## GENERAL PURPOSE MOBILE PLATFORMS

# 750MM HIGH ACCESS PLATFORM

## AKA: WOMBAT 1

### OVERALL DIMENSIONS (MM):

1659H x 1375L x 690W

### DESCRIPTION:

- Tare Weight: 461kg
- WLL: 150kg
- 2 swivel castors + 2 fixed castors
- Forklift pockets + lifting lugs
- Drawing # 867-S-12602
- Asset # OHP3-BG420-AP002



### CAUTION:

1. Platform only to be used on level and firm ground.
2. Castors to be locked prior to use.

### IDEAL FOR:

1. APRON FEEDER (PRIMARY CRUSHER & COS)
2. PRIMARY CRUSHER ROCKBREAKER & HPU



## GENERAL PURPOSE MOBILE PLATFORMS

# 750MM HIGH ACCESS PLATFORM

## AKA: WOMBAT 2

### OVERALL DIMENSIONS (MM):

1659H x 1346L x 690W

### DESCRIPTION:

- Tare Weight: 591kg
- WLL: 150kg
- 4 swivel castors + bolt on handrails
- Forklift pockets + lifting lugs
- Drawing # 867-S-12597
- Asset # OHP3-BG420-AP001



### CAUTION:

1. Platform only to be used on level and firm ground.
2. Castors to be locked prior to use.

### IDEAL FOR ACCESS TO:

1. Congested areas such as the tight side of the COS APRON FEEDER.



## GENERAL PURPOSE MOBILE PLATFORMS

# 750MM HIGH CANTILEVER ACCESS PLATFORM

**AKA: SPRING HARE**

**OVERALL DIMENSIONS (MM):**

1650H x 1363L x 966W



**DESCRIPTION:**

- Weight: 376kg
- WLL: 150kg
- 2 swivel castors + 2 fixed castors
- 100mm Overhang Platform
- Forklift pockets + lifting lugs
- Drawing # 864-S-12153
- Asset # OHP3-BG460-AP002

**CAUTION:**

1. Platform only to be used on level and firm ground.
2. Castors to be locked prior to use.

**IDEAL FOR:**

1. Access for spring change out on BG440 & BG460 VIBRATING SCREENS.



GENERAL PURPOSE MOBILE PLATFORMS

1000MM HIGH WALK THROUGH ACCESS PLATFORM

AKA: ROCKY

OVERALL DIMENSIONS (MM):

1917H x 1443L x 882W



DESCRIPTION:

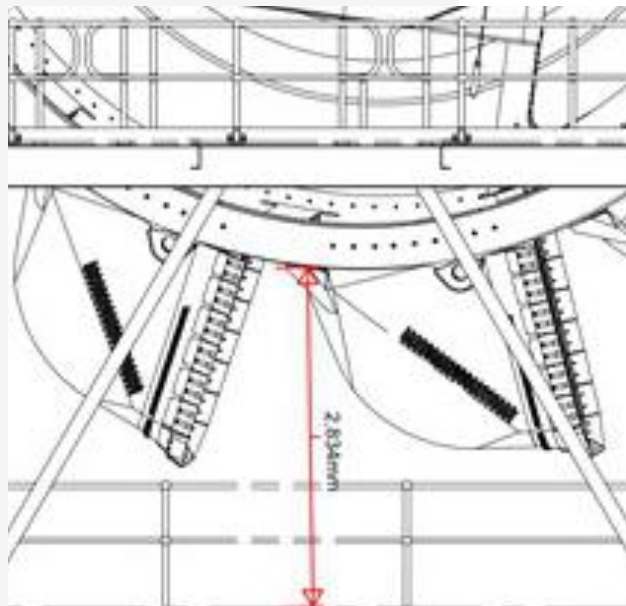
- WLL: 150kg
- Tare Weight: 576kg
- 2 swivel castors, 2 fixed castors
- Forklift pockets + lifting lugs
- Drawing # 2361-S-00018
- Asset #'s;  
PC1-RB401-AP001  
PC2-RB404-AP001  
OHP3-RC03-AP001

CAUTION:

1. Platform only to be used on level and firm ground.
2. Castors to be locked prior to use.

IDEAL FOR ACCESSING:

1. PRIMARY CRUSHER ROCKBREAKER
2. RECLAIMER RC03 BUCKET



## GENERAL PURPOSE MOBILE PLATFORMS

# 1100MM HIGH ACCESS PLATFORM

### AKA: SOFT RIDER

#### OVERALL DIMENSIONS (MM):

2145H x 1641L x 900W



#### DESCRIPTION:

- Tare Weight: 638kg
- WLL: 150kg
- 4 swivel castors with solid rubber tyres
- Forklift pockets + lifting lugs
- Drawing # 2365-S-00013
- Asset # TS412-CH412-AP007

#### CAUTION:

1. Platform only to be used on level and firm ground.
2. Castors to be locked prior to use.

#### IDEAL FOR:

1. Use at TS412 TRANSFER CHUTE



GENERAL PURPOSE MOBILE PLATFORMS

1200MM HIGH CANTILEVER ACCESS PLATFORM

AKA: TASSIE DEVIL

OVERALL DIMENSIONS (MM):  
2245H x 1759L x 1260W Approx.



DESCRIPTION:

- Tare Weight: 591kg
- WLL: 150kg
- 4 swivel castors
- Forklift pockets + lifting lugs
- Drawing # 866-S-12267
- Asset #'s:  
OHP3-ST04-AP001  
PC1-BG401-AP001

CAUTION:

1. Platform only to be used on level and firm ground.
2. Castors to be locked prior to use.

IDEAL FOR ACCESSING:

1. ST04 / ST05 SLEW DRIVE MOTOR
2. PRIMARY CRUSHER VAULT DOOR HYDRAULIC CYLINDERS



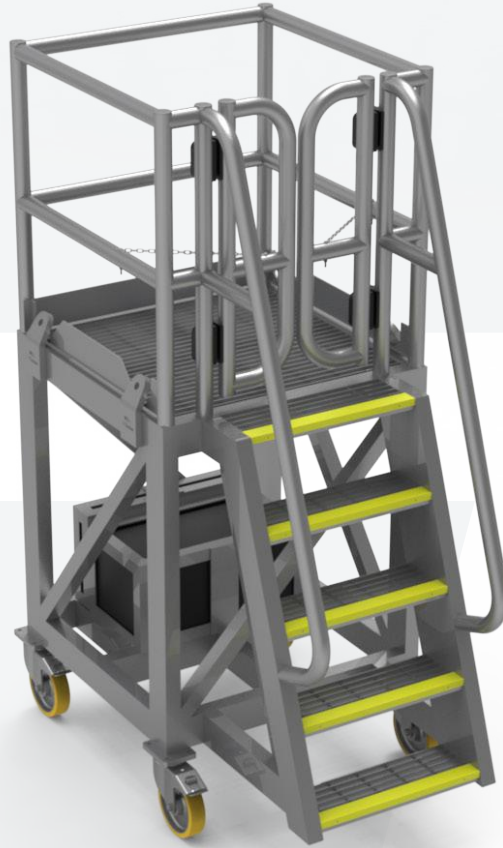
## GENERAL PURPOSE MOBILE PLATFORMS

# 1300MM HIGH ACCESS PLATFORM

**AKA: KANGAROO**

**OVERALL DIMENSIONS (MM):**

2203H x 1525L x 960W



**DESCRIPTION:**

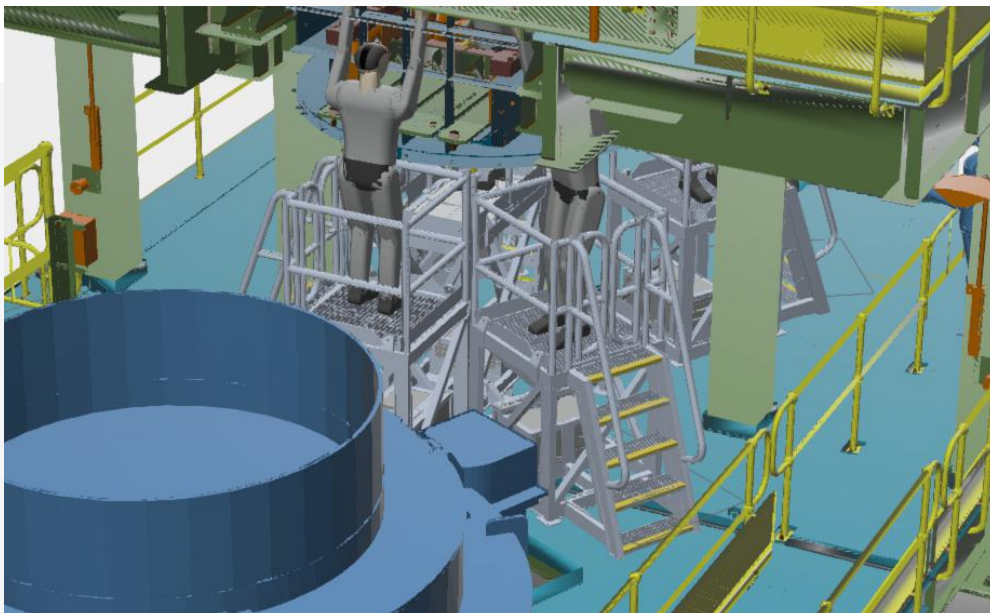
- Tare Weight: 650kg
- WLL: 150kg
- 4 swivel castors
- Fork lift pockets + lifting lugs
- Drawing # 863-S-12075
- Asset # OHP3-CH451C-AP001

**CAUTION:**

1. Platform only to be used on level and firm ground.
2. Castors to be locked prior to use.

**IDEAL FOR:**

1. CH451C to access liner external bolting and CRUSHER LEVEL SENSOR.



## GENERAL PURPOSE MOBILE PLATFORMS

# 1600MM HIGH ACCESS PLATFORM

## AKA: RHODESIAN RIDGEBACK

### OVERALL DIMENSIONS (MM):

Overall dimensions with outriggers folded (mm): 2513H x 2000L x 990W

Overall dimensions with outriggers unfolded (mm): 2513H x 2000L x 2000W



### DESCRIPTION:

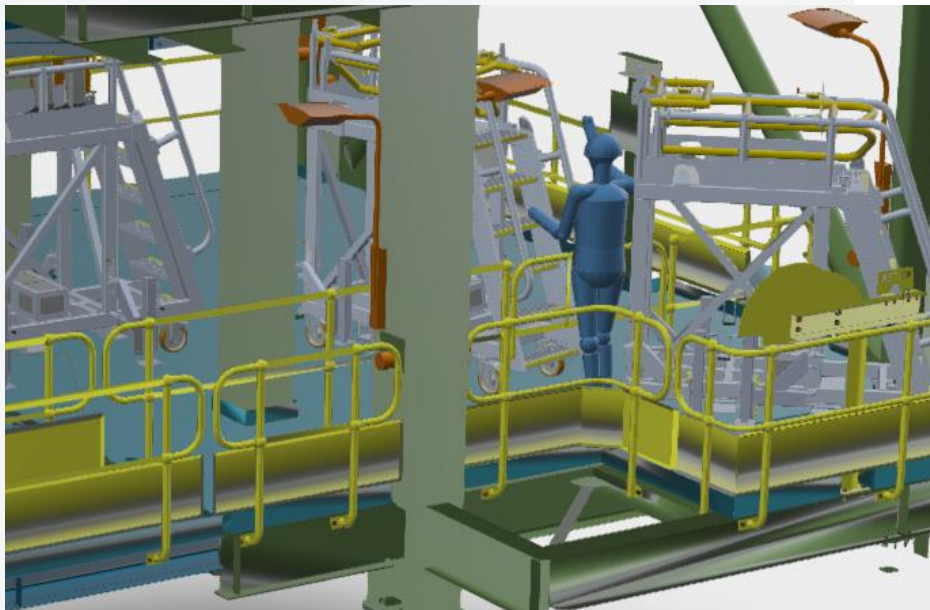
- WLL: 150kg
- Tare Weight: 460kg
- 4 swivel castors + 4 folding outriggers + fold in handrails
- Forklift pockets + lifting lugs
- Drawing # 863-S-12069
- Asset # OHP3-BG450-AP005

### CAUTION:

1. Platform only to be used on level and firm ground.
2. Outriggers to be deployed at all times except when platform in transit.
3. Handrails to be unfolded prior to accessing platform.

### IDEAL FOR:

1. Use on CH451C for internal access to BILLETS and lower LINERS.



## GENERAL PURPOSE MOBILE PLATFORMS

# 2450MM HIGH CANTILEVER ACCESS PLATFORM

**AKA: GIRAFFE**

**OVERALL DIMENSIONS (MM):**

3654H x 2702L x 1140W



**DESCRIPTION:**

- Tare Weight: 874kg
- WLL: 150kg
- 4 swivel castors + 4 outriggers
- Forklift pockets + lifting lugs
- Drawing # 865-S-12102
- Asset # OHP3-TS477-AP001

**CAUTION:**

1. Platform only to be used on level and firm ground.
2. Outriggers to be used at all times except during platform movements

**IDEAL FOR:**

1. Access to flange bolting and lift points on top of TRANSFER STATION
2. SHUTTLE HEAD CHUTE





# SPECIALISED PLANT PLATFORMS

## SPECIALISED PLANT PLATFORMS

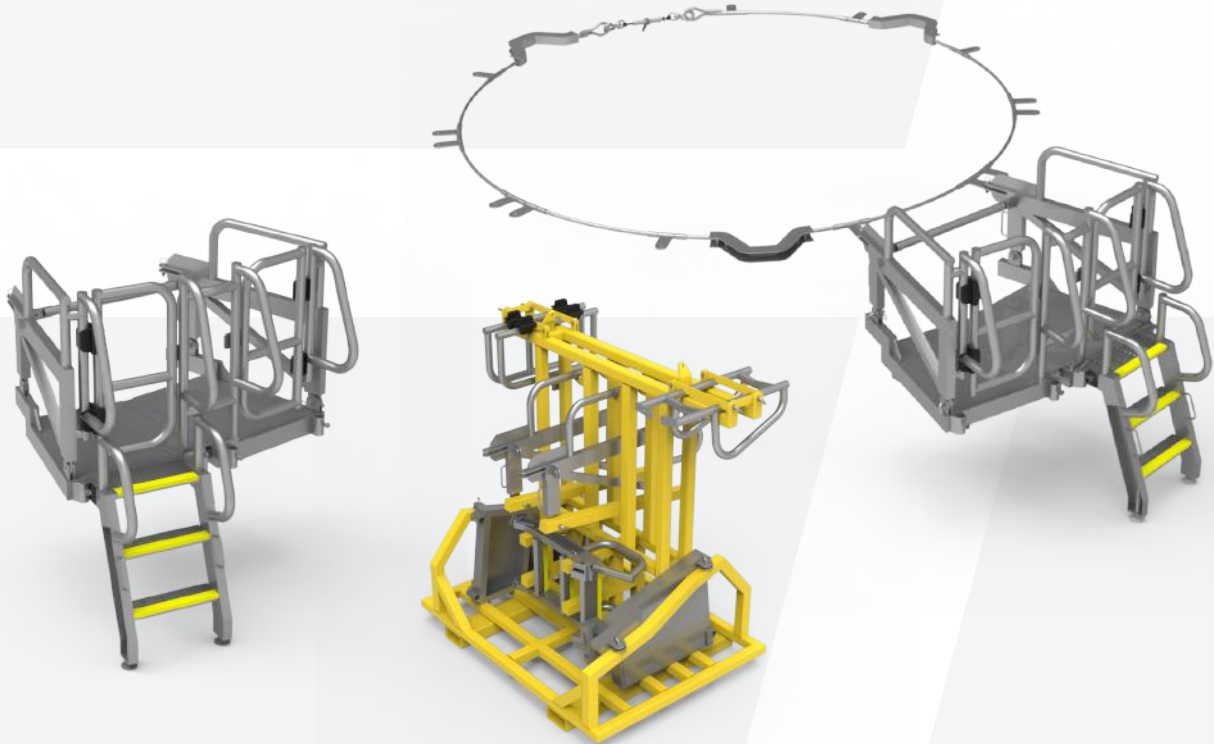
# PRIMARY CRUSHER SHELL BOLTING ACCESS PLATFORM - LOWER LEVEL

### AKA: PYGMY PYTHON

#### MULTIPLE PIECE PLATFORM SET COMPRISING;

- WLL 150kg platform (2 off) - Tare weight 78kg each
- Wire rope to hold platforms to SHELL

- Storage Rack with forklift pockets & lifting lugs
- Drawing # 2361-S-00023
- Asset # PC2-BG404-AP004

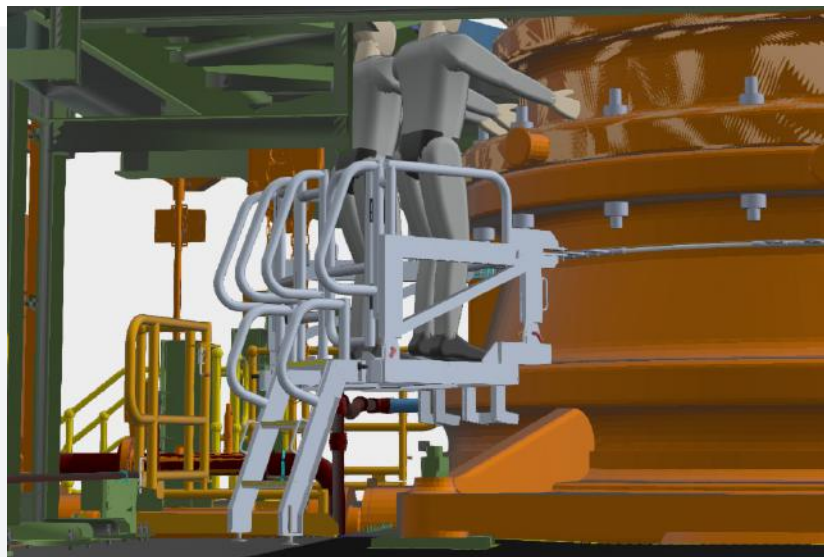
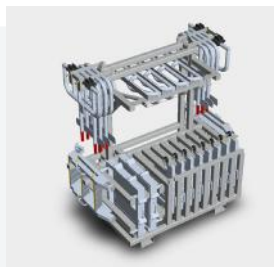


#### CAUTION:

1. Platform pieces to be hand carried to location
2. Tension wire rope around CRUSHER prior to platform use.
3. Pack platform in RACK after use.

#### SOLELY FOR:

1. Use to access PRIMARY CRUSHER SHELL BOLTING on lower level.



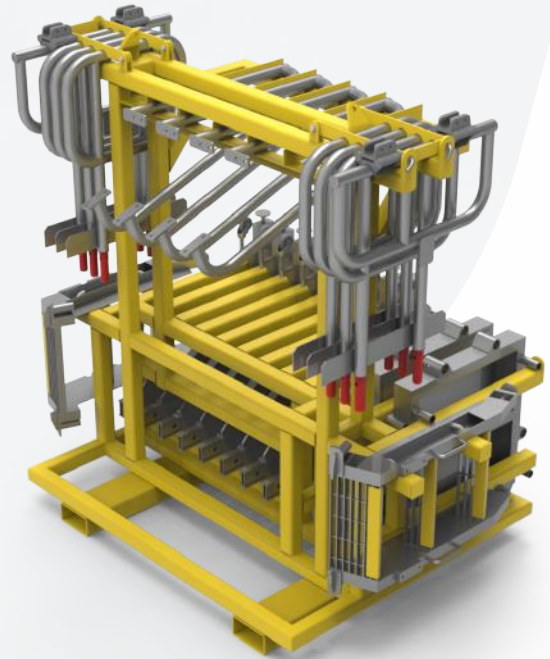
**SPECIALISED PLANT PLATFORMS**

**PRIMARY CRUSHER SHELL BOLTING  
ACCESS PLATFORM - UPPER LEVEL**

**AKA: CRAB**

**MULTIPLE PIECE PLATFORM SET COMPRISING;**

- WLL 150kg platform (2 off) - Tare weight 97kg each
- Storage Rack with forklift pockets & lifting lugs
- Drawing # 2361-S-00019
- Asset # PC2-BG404-AP003

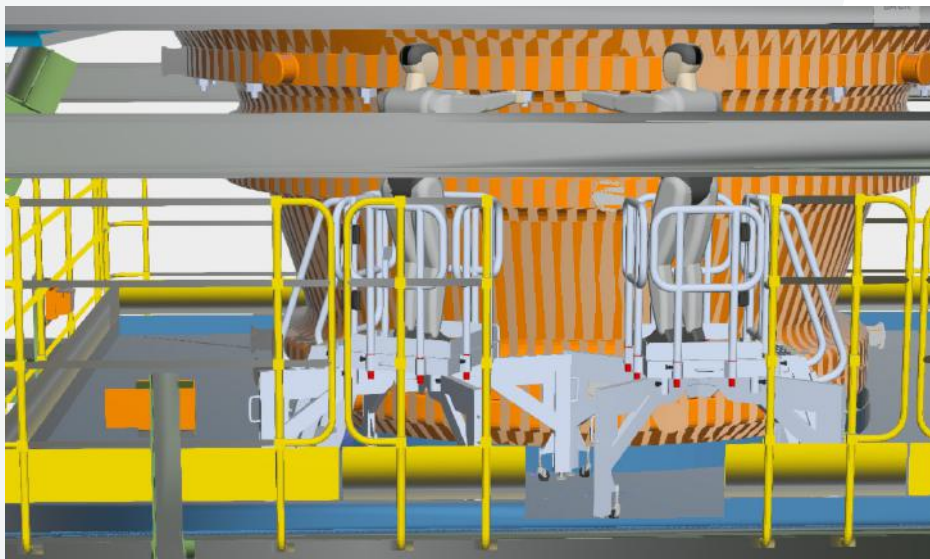


**CAUTION:**

1. Platform pieces to be hand carried to location.
2. Pack platform pieces on RACK after use.

**SOLELY FOR:**

1. Use to access PRIMARY CRUSHER SHELL BOLTING on upper level.



## SPECIALISED PLANT PLATFORMS

# PRIMARY CRUSHER APRON FEEDER ROTABLE DISCHARGE CHUTE ACCESS

### AKA: KOALA

#### DESCRIPTION:

- WLL: 150kg multi-piece platform - Tare weight 75kg
- Drawing # 2361-S-00029
- Asset # PC1-BG403-AP002

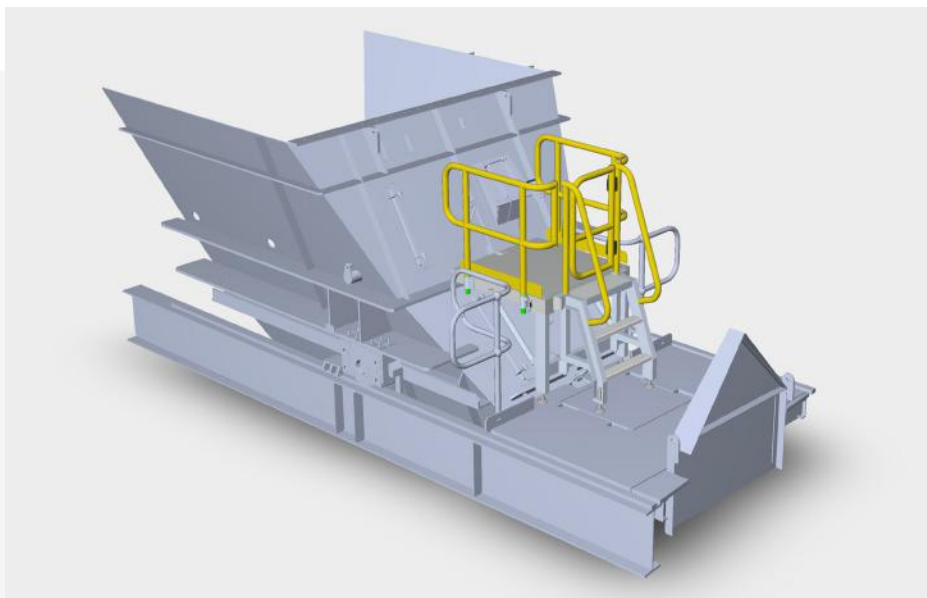


#### CAUTION:

1. Secure PLATFORM to DISCHARGE CHUTE with two PLATFORM PINS into holes pre-drilled into DISCHARGE CHUTE FLANGE.

#### SOLELY FOR:

1. Use at PC1 and PC2 Apron Feeder Discharge Chute for accessing flange bolting of rotatable chute.



## SPECIALISED PLANT PLATFORMS

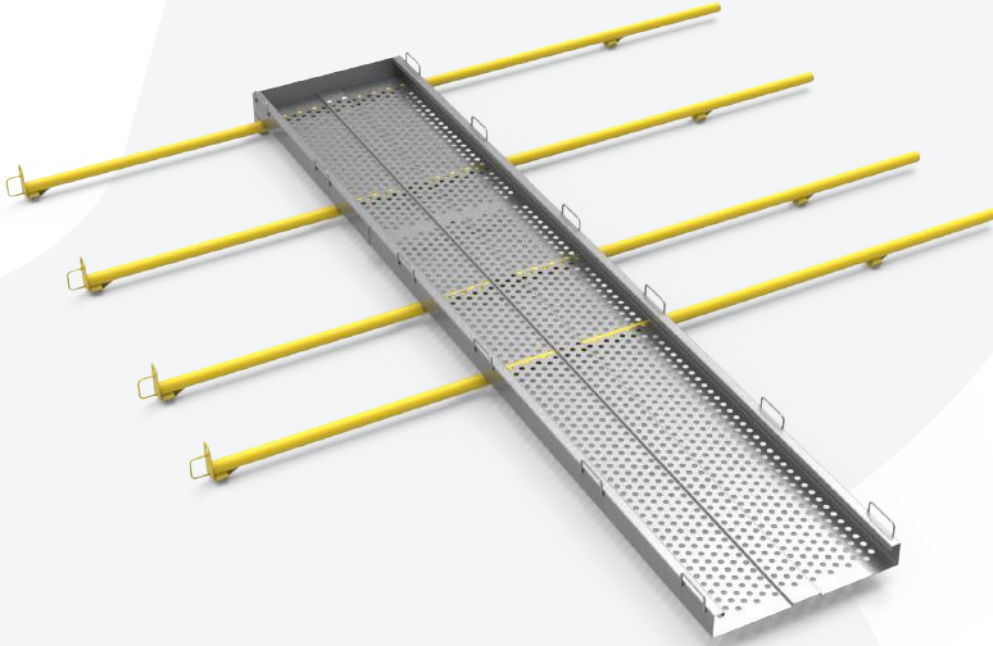
# CH421B CRAWLER RAMP FOR REMOTE 3D SCANNING OF CH421A LINERS

### AKA: ROBO RAMP

#### DESCRIPTION:

- Single 'plank' - Tare weight 21kg
- WLL: 45kg

- Support tubes (4 off) - weighs 12kg each
- Drawing # 867-S-12596
- Asset # OHP3-BG420-AP003

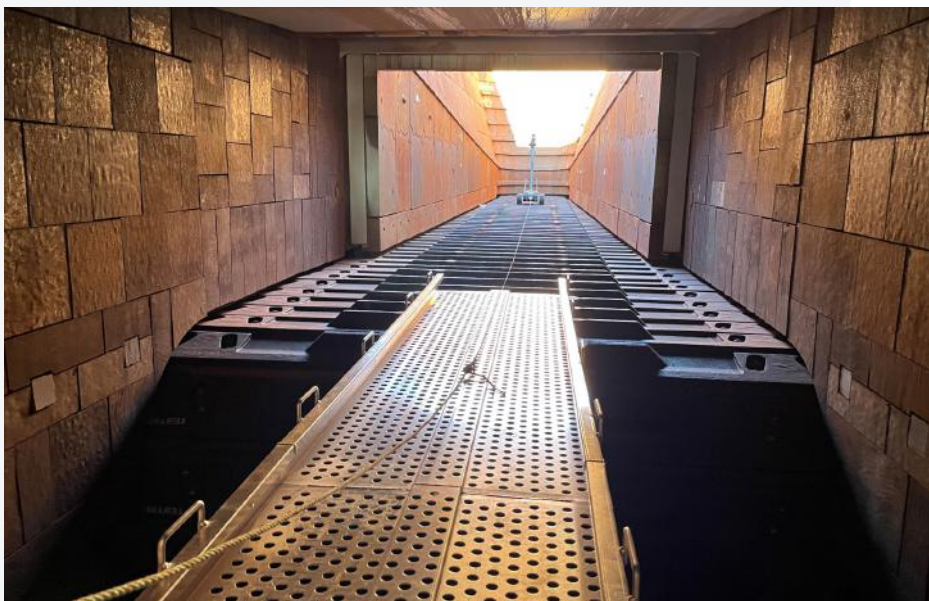


#### CAUTION:

1. Not rated for person access - WLL 45kg
2. Use leash on RAMP so RAMP can be retrieved in event RAMP is dropped into CHUTE

#### SOLELY FOR:

1. Use at COS APRON FEEDER DISCHARGE CHUTE to enable remote controlled CRAWLER to enter APRON FEEDER in order to 3D scan COS TUB LINERS.



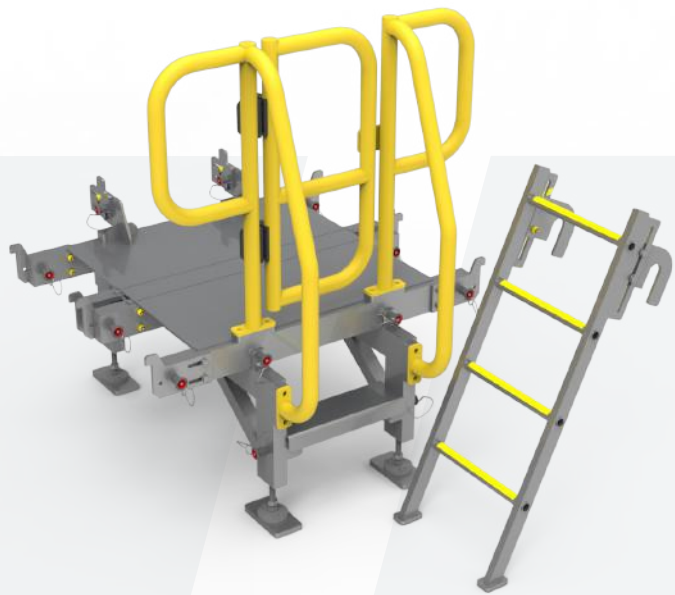
## SPECIALISED PLANT PLATFORMS

# CH421C TO CH421F DRIBBLE CHUTE ACCESS PLATFORM SET

### AKA: JEKYLL & HYDE

#### MULTIPLE PIECE PLATFORM SET COMPRISING;

- 150kg WLL multiple piece platform (internal) - Asset #: OHP3-CH421-AP002
- 150kg WLL multiple piece platform (external) - Asset #: OHP3-CH421-AP001
- Storage Rack with forklift pockets & lifting lugs
- Drawing # 867-S-12616

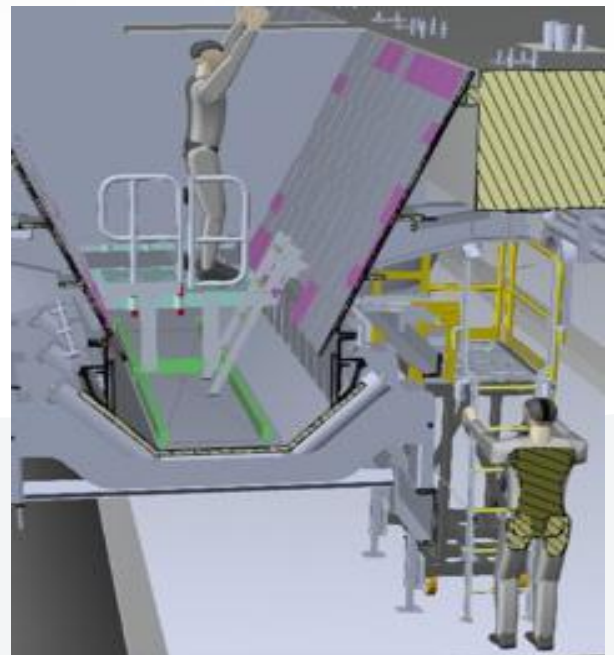


#### CAUTION:

1. External platform jacks to be deployed at all times except when platform in transit.
2. Platforms to be erected in accordance with drg. # 867-S-12616.
3. External platform's cantilever platform to be supported by Building Beam as instructed in drg. 867-S-12616.
4. Platform pieces to be stored in RACK after use.

#### SOLELY FOR:

1. Use to access each of the four dribble chutes below each of the COS APRON FEEDERS.



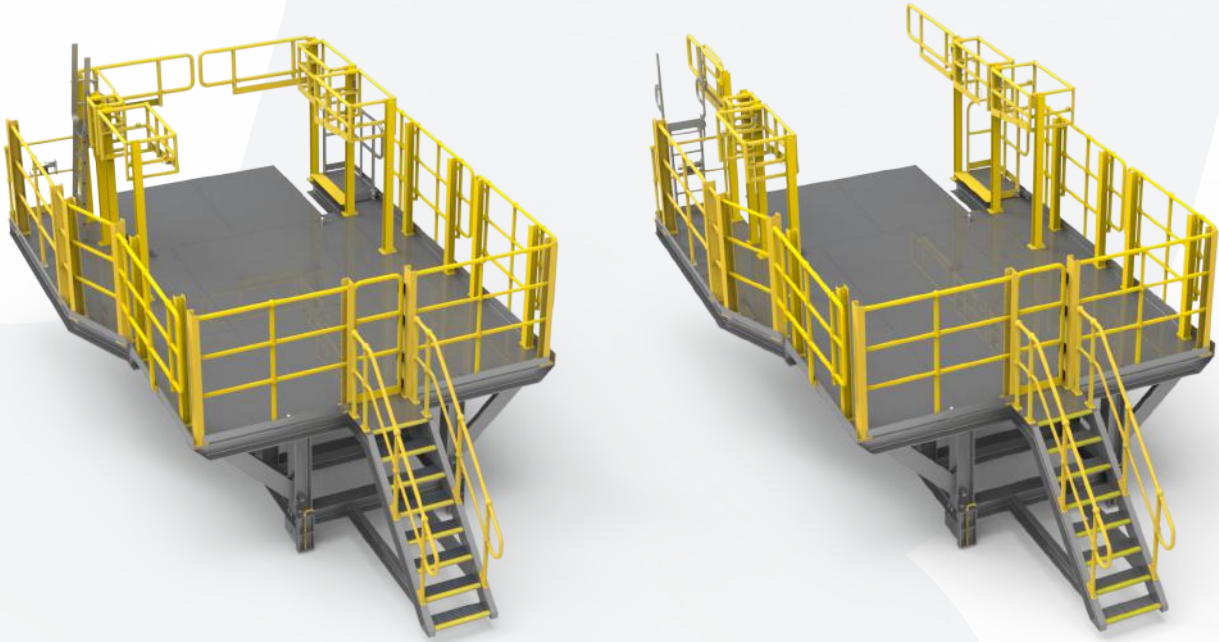
**SPECIALISED PLANT PLATFORMS**

**CH451A LINER RENEWAL PLATFORM**

**AKA: BEAST**

**DESCRIPTION:**

- One piece platform with integrated sliding decks and sliding & swing handrails.
- Fitted with wheel blocks for running on building rails
- Fitted with lifting lugs
- Approx. mass: 11 Tonne
- Drawing # 863-S-12071
- Asset # OHP3-BG450-AP006

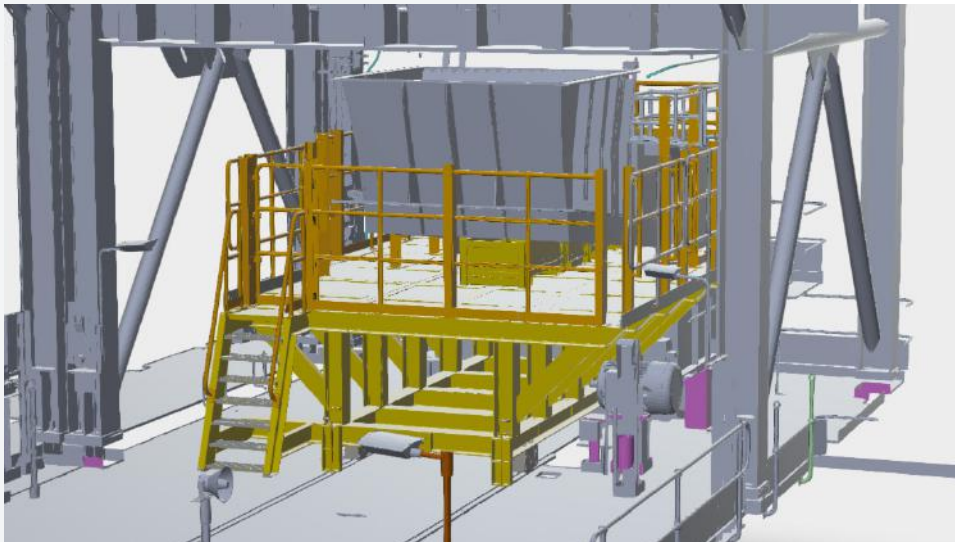


**CAUTION:**

1. Ensure all sliding decks are locked in retracted position prior to moving platform to minimise risk of fouling.
2. Only enter platform once it is in position and there is no open edge.

**SOLELY FOR:**

1. Use in BG450 below 'A' CHUTE once VIBRATING FEEDER is removed.
2. Ideal to facilitate 'A' CHUTE liner renewal, upper portions of 'B' CHUTE liner renewal & GUILLOTINE access.
3. Consideration could be given to removal of 'A' CHUTE using this platform.



## SPECIALISED PLANT PLATFORMS

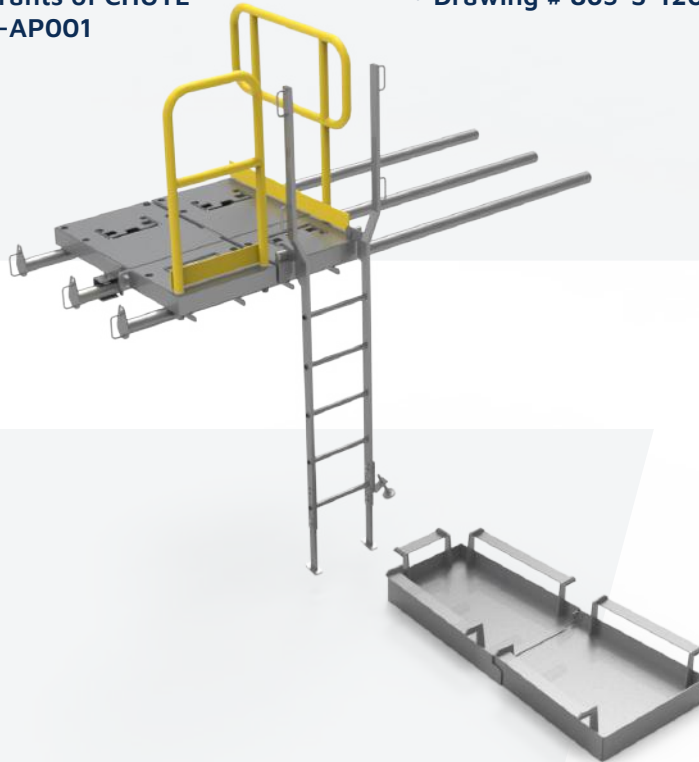
# CH451B INTERNAL ACCESS

### AKA: KOOKABURRA

#### MULTIPLE PIECE PLATFORM SET COMPRISING;

- 150kg WLL platform which can be reconfigured to access all four quadrants of CHUTE Asset # OHP3-CH451B-AP001

- 150kg WLL coffin plate Asset # OHP3-CH451B-AP002
- Storage Rack with forklift pockets & lifting lugs
- Drawing # 863-S-12061

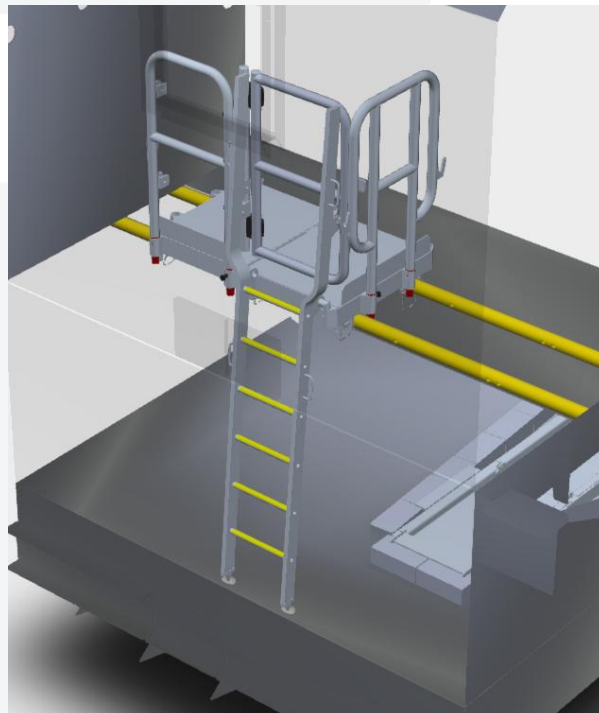


#### CAUTION:

1. Follow installation direction of drg. # 863-S-12061.
2. Platform pieces to be stored in RACK after use.

#### SOLELY FOR:

1. Use at BG450 to access 'B' CHUTE internals



## SPECIALISED PLANT PLATFORMS

# SECONDARY CRUSHER ACCESS PLATFORM

## AKA: TOAD

### FEATURES:

- 150KG WLL one piece platform with integrated sliding deck.
- Two loose ladders of different lengths that can be stowed on main platform
- Fitted with lifting lugs and forklift pockets
- Tare weight: 2065kg
- Drawing # 863-S-12065
- Asset # OHP3-BG450-AP004



### CAUTION:

1. Prior to lifting MAIN PLATFORM into position it is recommended that both ladders be removed from MAIN PLATFORM to minimise risk of clashing with congested building BG450.
2. Follow direction of drg. #'s 864-S-12065/66/67/68 when lifting platform into / out of building.
3. After use stow both ladders on MAIN PLATFORM

### SOLELY FOR:

1. Use at BG450 for providing access to internals of SECONDARY CRUSHER.



## SPECIALISED PLANT PLATFORMS

# CH451D - SECONDARY CRUSHER UNDERCHUTE LUBE OIL LINE PLATFORM

**AKA: BADGER**

**DESCRIPTION:**

- Multiple piece platform set
- Comes with Storage Rack with forklift pockets & lifting lugs
- WLL 250kg
- Drawing # 863-S-12058
- Asset # OHP3-BG450-AP003

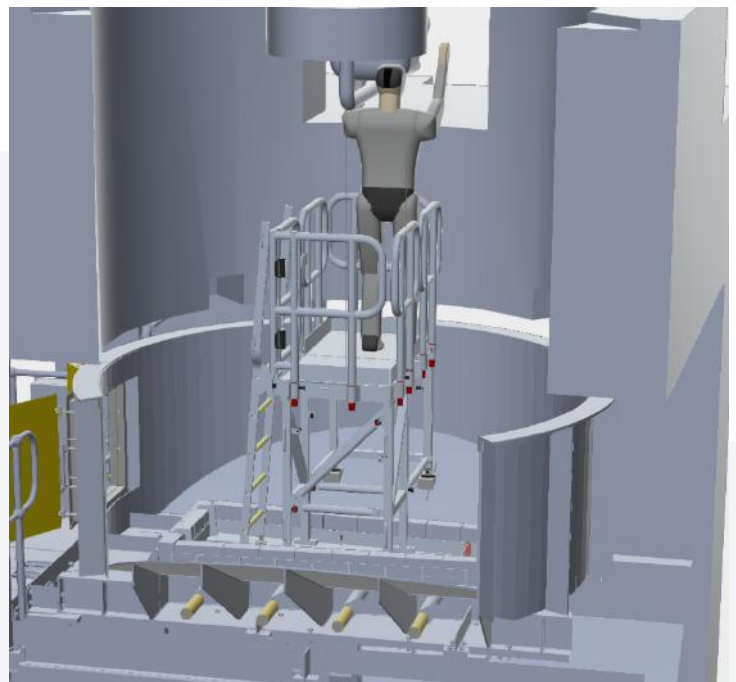


**CAUTION:**

1. Follow installation instructions of drg. # 863-S-12060.
2. Store platform pieces on RACK after use.

**SOLELY FOR:**

1. Use within BG450 SECONDARY CRUSHER UNDERCHUTE.
2. Ideal for accessing lube oil piping within UNDERCHUTE.



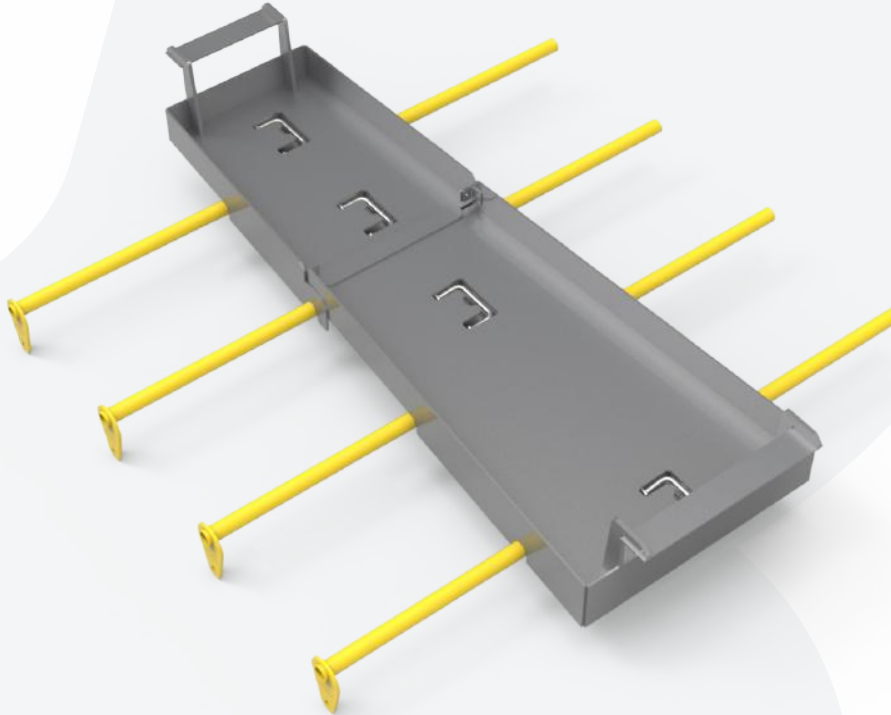
SPECIALISED PLANT PLATFORMS

CH451D - SECONDARY CRUSHER  
UNDERCHUTE COFFIN PLATE

AKA: HUNTSMAN

DESCRIPTION:

- WLL 250kg
- Tare Weight: 67kg
- Multiple piece platform
- Drawing # 863-S-12054
- Asset # OHP3-BG450-AP001

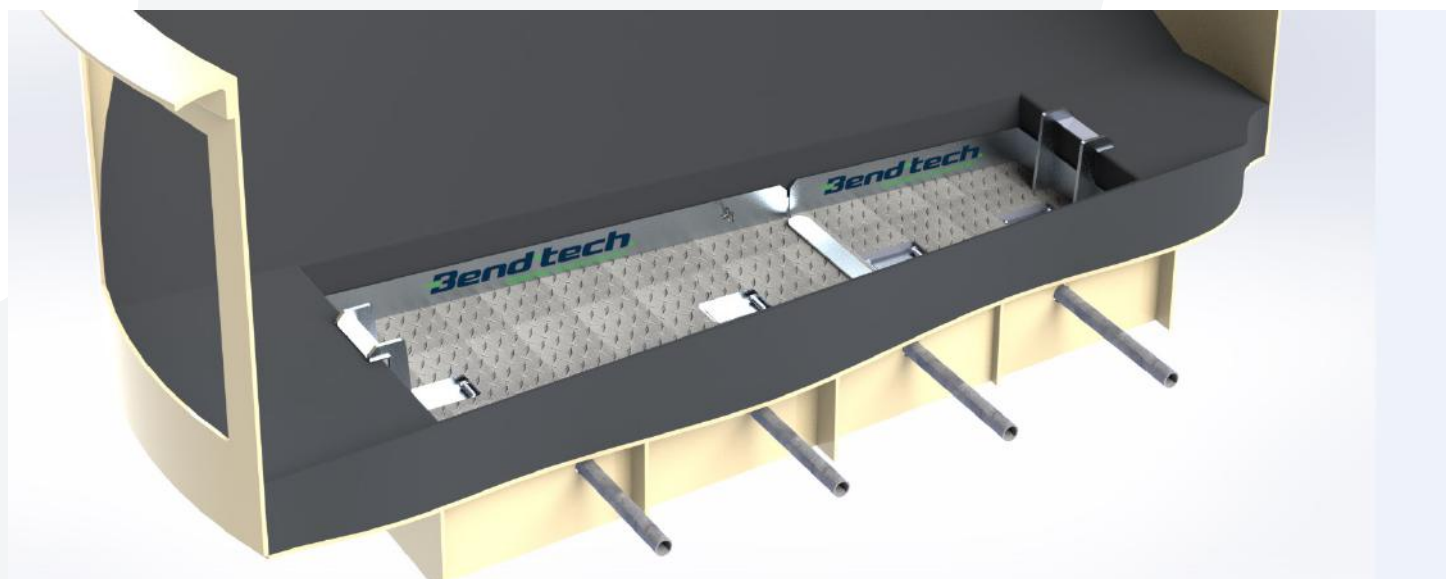


CAUTION:

1. Once installed apply a lock to secure two platform pieces together to provide UNDERCHUTE isolation from CV436 below.

SOLELY FOR:

1. Use within BG450 SECONDARY CRUSHER UNDERCHUTE to enable work within UNDERCHUTE and isolation from CV436.



## SPECIALISED PLANT PLATFORMS

# BF441 ACCESS PLATFORM

## AKA: FRILL NECK LIZARD

### DESCRIPTION:

- 150kg WLL one piece platform with swing handrails.
- Fitted with lifting lugs and forklift pockets
- Fitted with 4 swivel castors
- Tare weight: 533kg
- Drawing # 864-S-12145
- Asset # OHP3-BG440-AP004

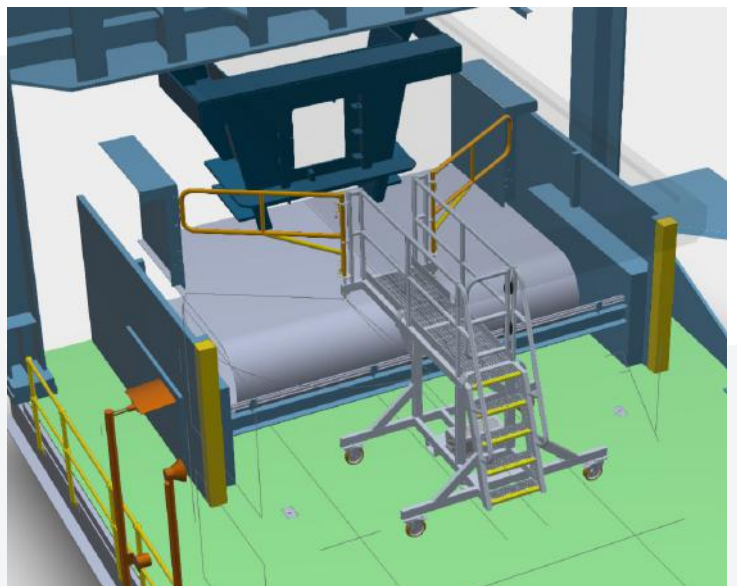


### CAUTION:

1. Castors to be locked once platform in position.
2. Do not access platform unless CANTILEVER PLATFORM is supported on LPBF by jack screws.

### SOLELY FOR:

1. Use at Low Profile Belt Feeders of BG440.
2. Ideal for access onto LPBF to inspect PLOUGH and 'A' CHUTE LINERS & access to GUILLOTINE.



## SPECIALISED PLANT PLATFORMS

# CH441A LINER RENEWAL PLATFORM ROLLER BENCHES (5 OFF) LINER CAGES (2 OFF)

### AKA: TORTOISE

#### DESCRIPTION:

- 6 Tonne WLL one piece platform with fold down ramp and swing handrails
- Tare weight: 2907kg
- Fitted with lifting lugs
- Drawing # 864-S-12149
- Comes with;
  - \* 250kg WLL Roller Bench (5 off) - Tare weight: 30kg each
  - \* 2 Tonne WLL Pallet Cage (2 off) - Tare weight: 336kg each
- Asset # OHP3-CH441A-AP001
- Asset # OHP3-BG440-AP004

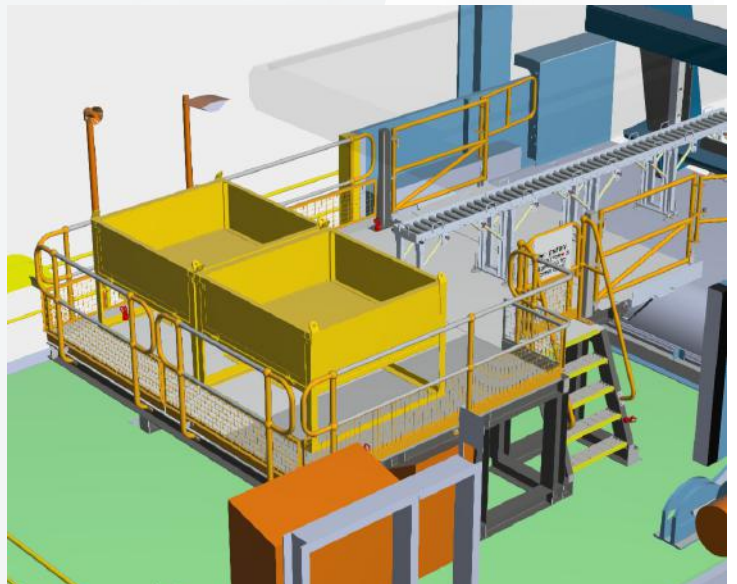


#### CAUTION:

1. Refer to drg. # 864-S-12149 to review lifting instructions of MAIN PLATFORM into congested BG440.
2. Do not enter PLATFORM if PLATFORM is exposed to open edge.

#### SOLELY FOR:

1. Use to access LOW PROFILE BELT FEEDER of BG440.
2. Ideal for renewal of 'A' CHUTE liners & Access to GUILLOTINE & LPBF PLOUGH.



## SPECIALISED PLANT PLATFORMS

# VS441 & VS461 ACCESS LADDER

### AKA: PREYING MANTIS

#### DESCRIPTION:

- 150kg WLL ladder
- Tare weight: 17kg
- Drawing # 864-S-12146

- Asset #'s:  
OHP3-BG440-AP003  
OHP3-BG460-AP003  
(Note: Both ladders are identical)

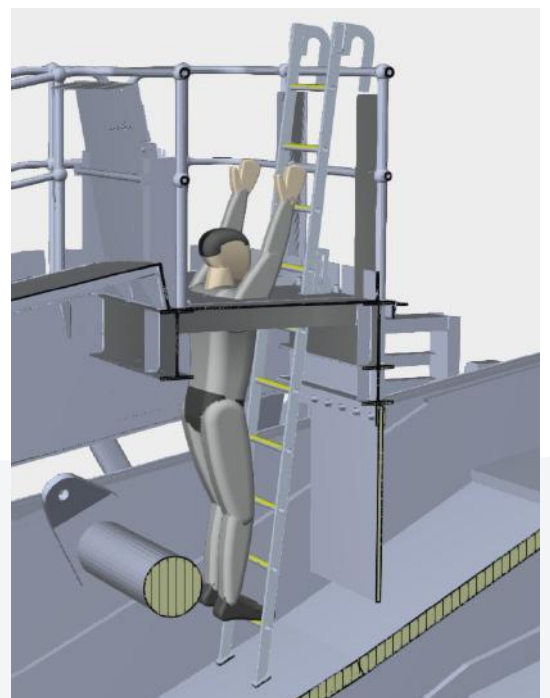


#### CAUTION:

1. Before climbing down ladder, ensure ladder bracket sits over existing M20 studs (2 off) that manhole lid bolts closed to.

#### SOLELY FOR:

1. Use to gain access down onto each VIBRATING SCREEN of both PRODUCT & SCALPING BUILDINGS.



**SPECIALISED PLANT PLATFORMS**

**VS441 & VS461 EXCITER BOLT REMOVAL PLATFORM**

**AKA: WILDCAT**

**DESCRIPTION:**

- 150kg WLL platform - LHS
- 150kg WLL platform - RHS
- Spigot Bracket to be permanently installed at each Vibe Screen (LHS & RHS)
- Drawing # 864-S-12168
- Asset #'s: OHP3-VS441-AP001L & OHP3-VS441-AP001R

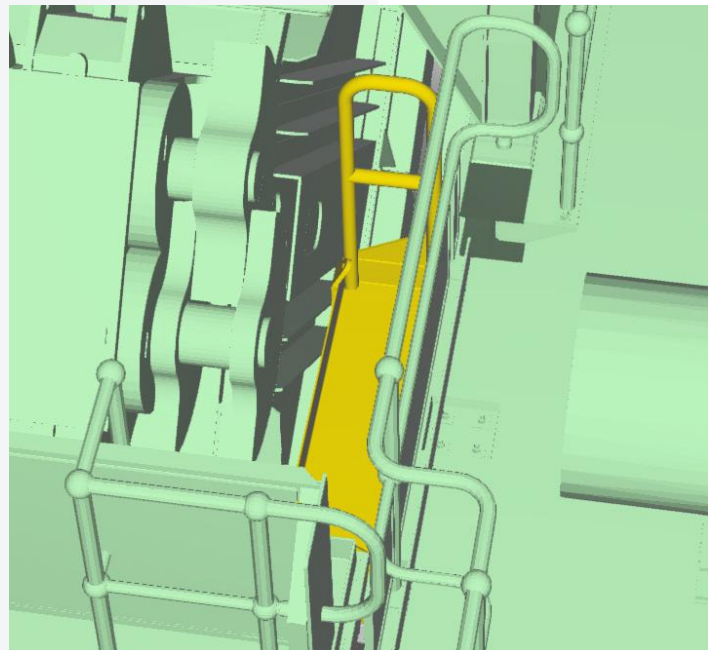
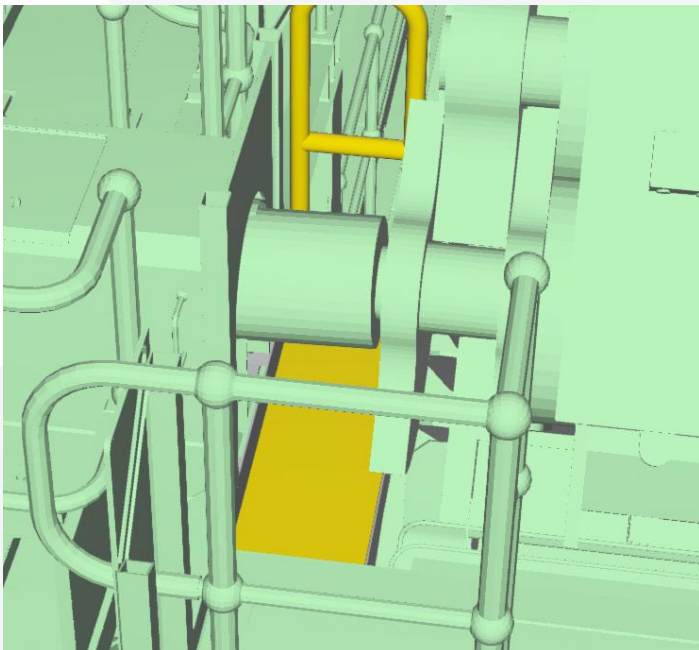


**CAUTION:**

1. Recommend that drive shaft be removed between motor and DE EXCITER to provide the necessary clearance to enable PLATFORM installation & use.

**SOLELY FOR:**

1. Use in BG440 & BG460 for gaining access to VIBRATING SCREEN EXCITERS.



## SPECIALISED PLANT PLATFORMS

# VS441 & VS461 PANEL REPLACEMENT PLATFORMS

## AKA: SNAKE NECKED TURTLE

### DESCRIPTION:

- One piece platform with swing guardrail.
- Fitted with wheel blocks (4 off) for running on building rails
- Fitted with lifting lugs
- Tare weight: 3442kg
- Provided with storage skids

- Drawing #'s 864-S-12101 (PRODUCT) & 864-S-12104 (SCALPING)
- Asset #'s OHP3-BG460-AP001 & OHP3-BG440-AP001  
(Note: Platforms can be interchanged between BG440 & BG460)



### CAUTION:

1. Once platform in position BOLT LOCK platform to rail to prevent further rolling of platform.
2. Use swing down guardrail so as to never expose platform users to open edge.
3. Loads are not to be landed on portion of platform as indicated, to prevent risk of platform toppling.

### SOLELY FOR:

1. Use at PRODUCT & SCALPING VIBRATION SCREENS.



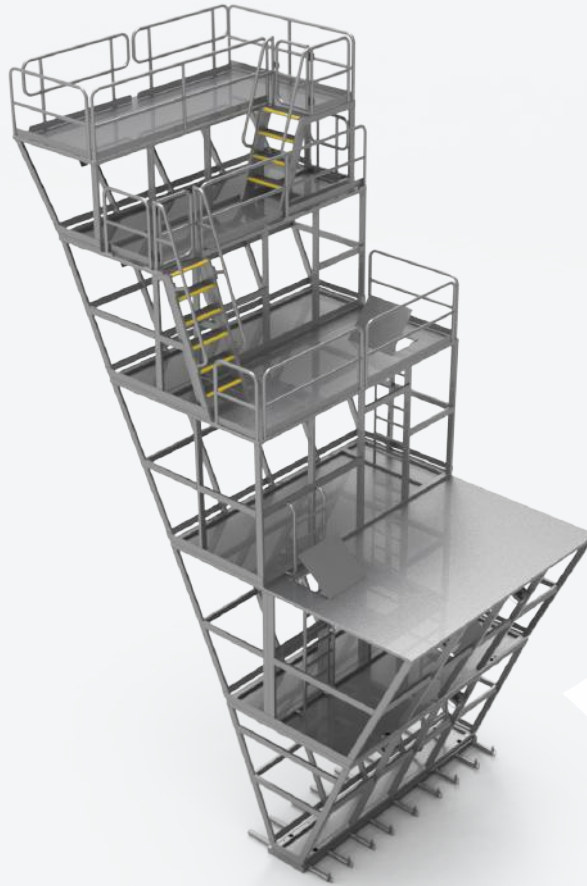
**SPECIALISED PLANT PLATFORMS**

**CH441F & CH461F INTERNAL MAINTENANCE WORK PLATFORM SET**

**AKA: BEHEMOTH**

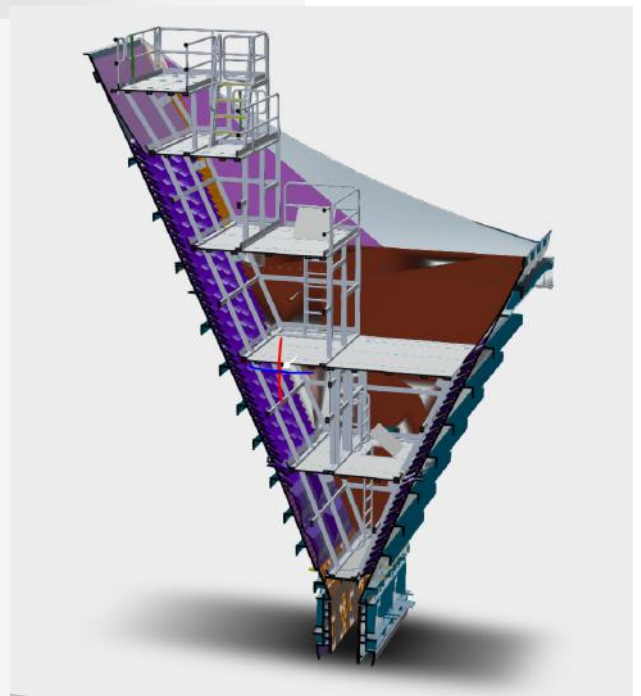
**DESCRIPTION:**

- Multiple piece platform set
- Drawing # 864-S-12154
- Asset # OHP3-CH441F-AP001



**SOLELY FOR:**

1. Use to access F-CHUTE internals in BG440 & BG460.
2. Ideal for accessing liners once VIBRATING SCREEN removed.



## SPECIALISED PLANT PLATFORMS

# CH461A LINER RENEWAL PLATFORM

## AKA: BEAST JR

### DESCRIPTION:

- Two piece platform
- Fitted with wheel blocks for running on building rails
- Fitted with lifting lugs
- Approx. mass: 9 Tonne
- Drawing # 864-S-12164
- Asset # OHP3-BG460-AP006

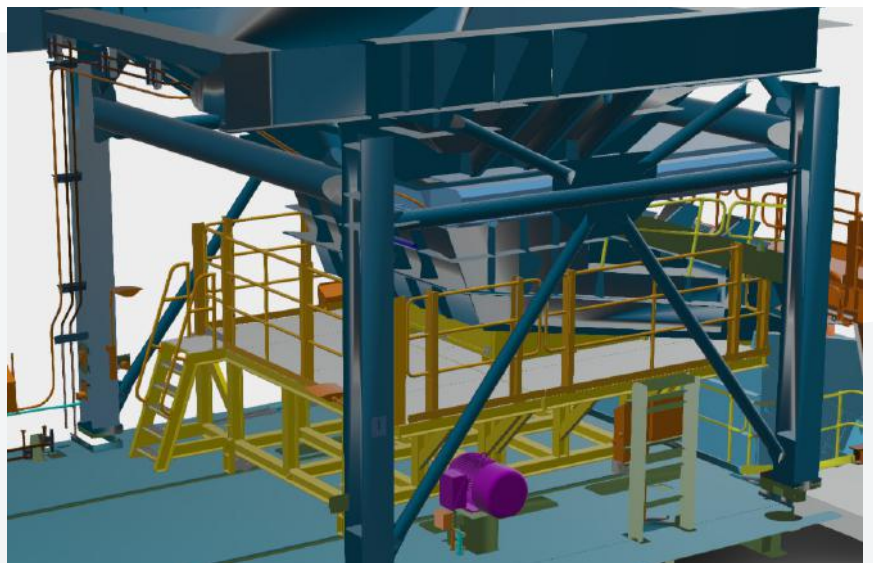


### CAUTION:

1. Only enter platform once it is in position and there is no open edge.

### SOLELY FOR:

1. Use in BG460 below 'A' CHUTE once VIBRATING FEEDER is removed.
2. Ideal to facilitate 'A' CHUTE liner renewal & GUILLOTINE access.
3. Consideration could be given to removal of 'A' CHUTE using this platform.



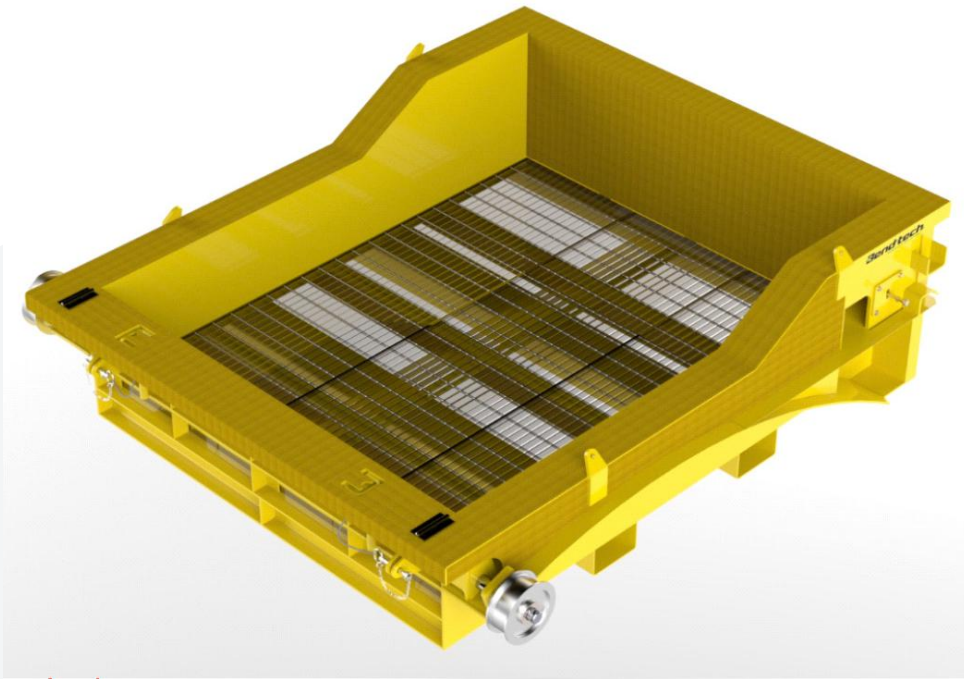
**SPECIALISED PLANT PLATFORMS**

**ST04 / ST05 LOWER HEAD CHUTE LINER INSPECTION PLATFORM**

**AKA: FLYING FOX**

**DESCRIPTION:**

- Tare weight: 1744kg
- 500KG WLL one piece platform
- Fitted with lifting lugs and forklift pockets
- Drawing # 866-S-12275
- Asset # OHP3-ST04-AP002
- To be used in conjunction with TK supplied special tooling

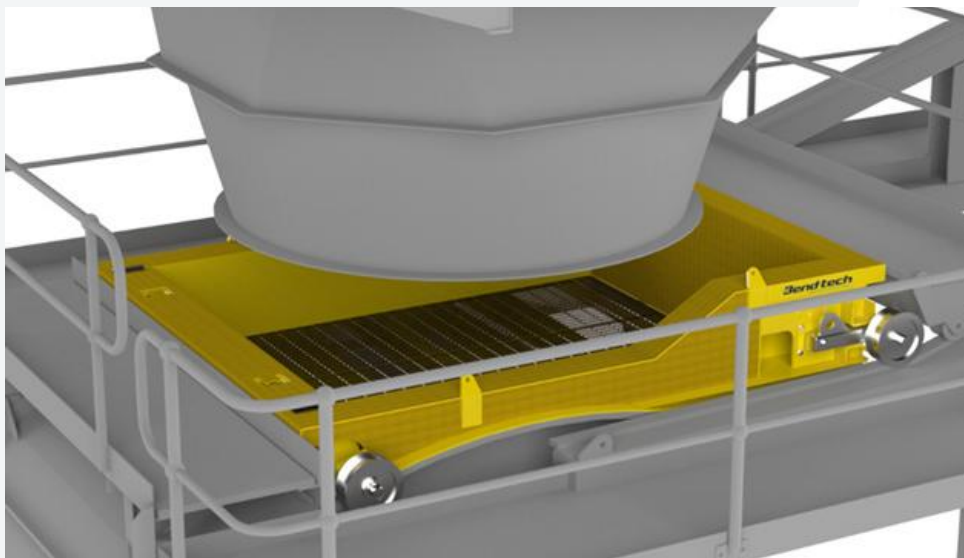


**CAUTION:**

1. Note installation sequence outlined in drg. # 866-S-12276.

**SOLELY FOR:**

1. Use at ST04 & ST05 in conjunction with the TK supplied MAINTENANCE FRAME & associated tooling.
2. Ideal for inspection of LOWER HEAD CHUTE internals.



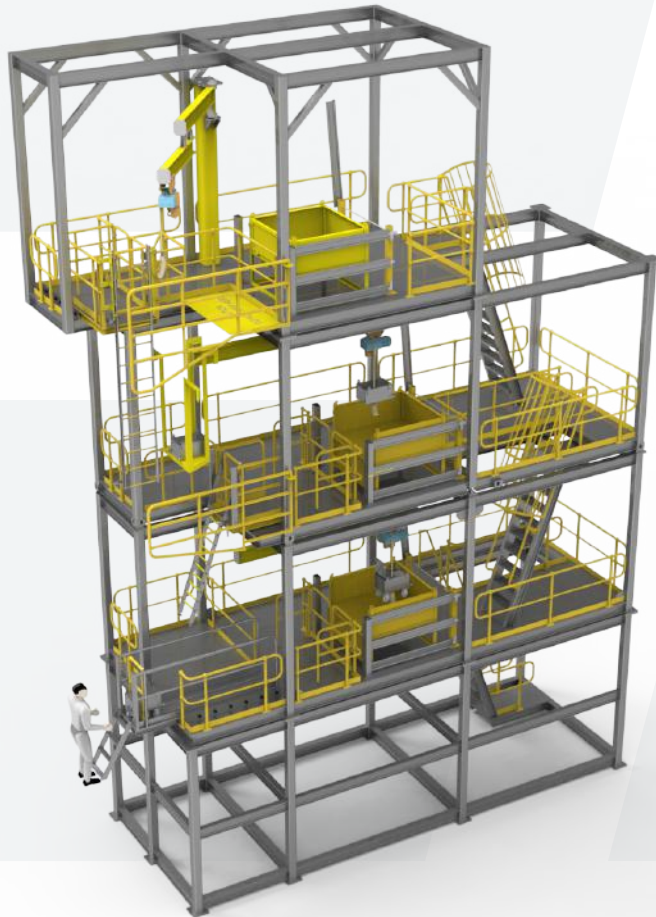
## SPECIALISED PLANT PLATFORMS

# RECLAIMER RC03 BUCKET WHEEL CIRCULAR LINER ACCESS

## AKA: MAMMOTH

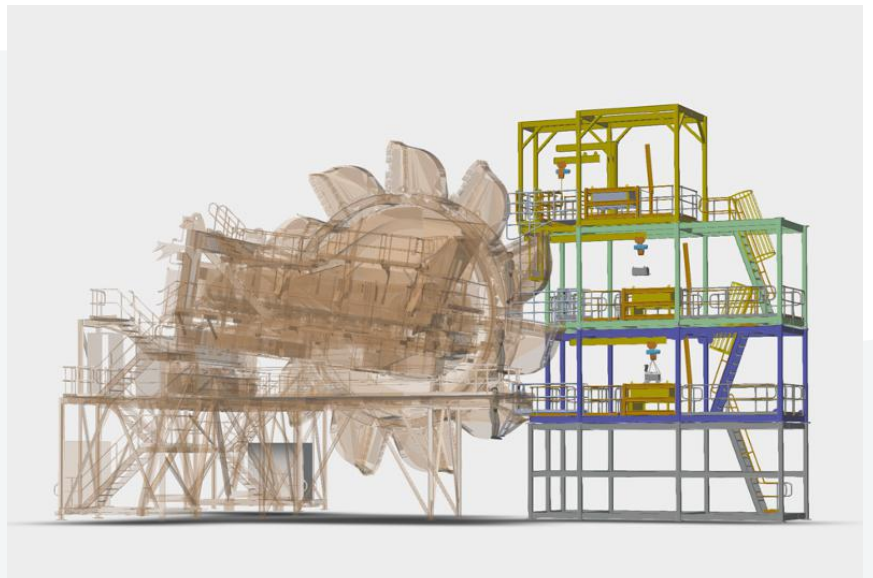
### DESCRIPTION:

- Drawing # 866-S-12275
- Asset # OHP3-RC03-AP002



### SOLELY FOR:

1. Use at RC03 for accessing the CIRCULAR LINER via three of the BUCKETS.



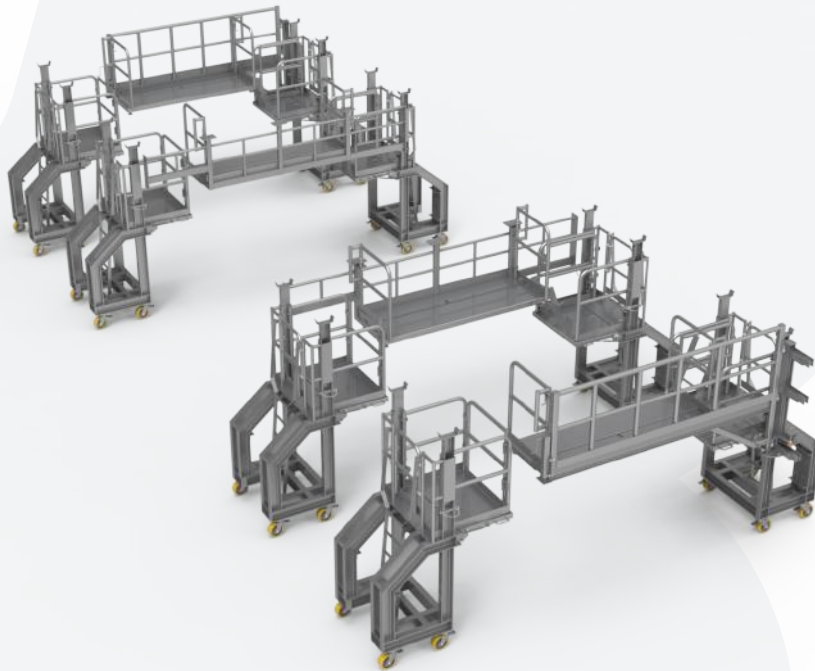
## SPECIALISED PLANT PLATFORMS

# TLO2 - ROTABLE LOWER CHUTE TO GUILLOTINE TOP FLANGE BOLT

## AKA: MEERKATS

### MULTIPLE PIECE PLATFORM SET COMPRISING;

- 1555mm high mobile platform (4 off) - Tare weight of each: 600kg
- Fixed guardrail for permanent installation in building (2 off)
- Swing out guardrail for permanent installation in building (2 off)
- Drawing # 867-S-12611
- Asset #'s: OHP3-TLO2-AP001/2/3/4

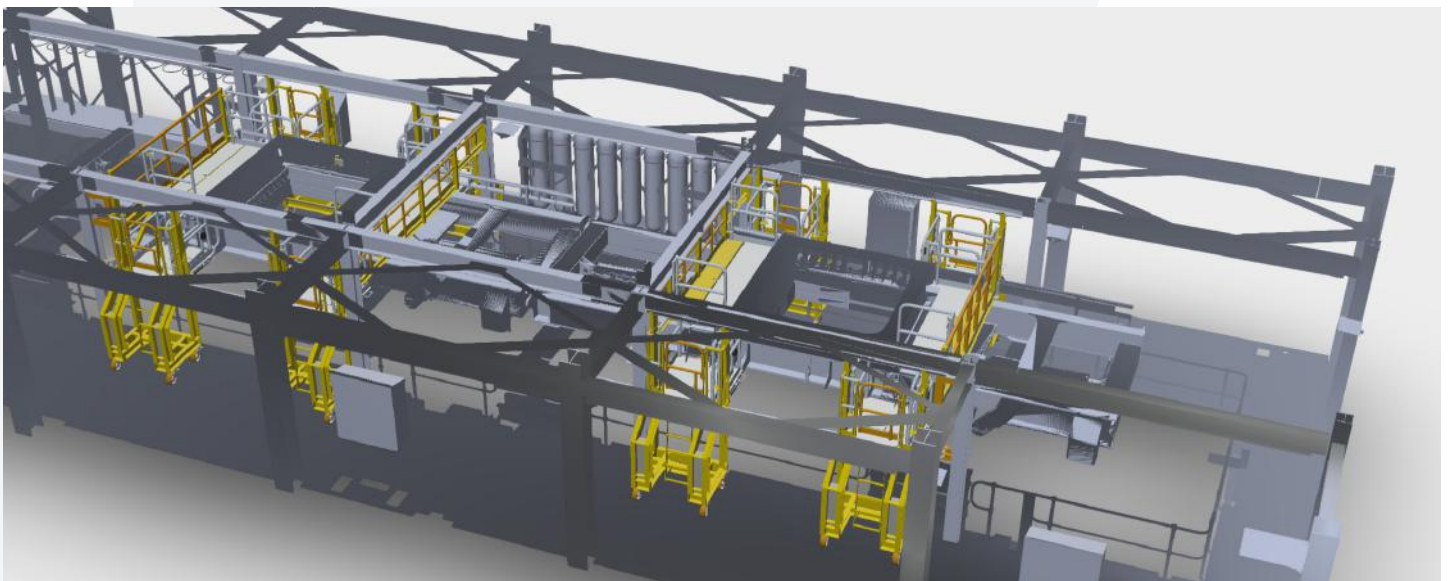


### CAUTION:

- No entry to mobile platforms if;
1. Jockey stands not engaged with overhead beam.
  2. Platform exposed to open edge.

### SOLELY FOR:

1. Use at TLO2 for accessing bolted flange between GUILLOTINE & rotatable LOWER CHUTE.



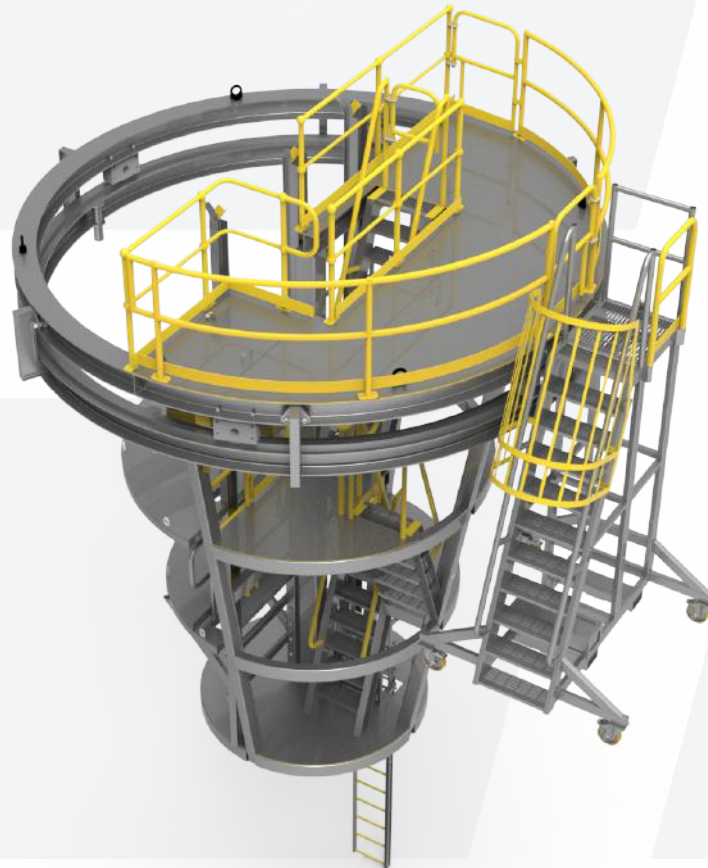
## SPECIALISED PLANT PLATFORMS

# TLO2 - ROTABLE LOWER CHUTE RELINING PLATFORM

**AKA: ICECREAM CONE**

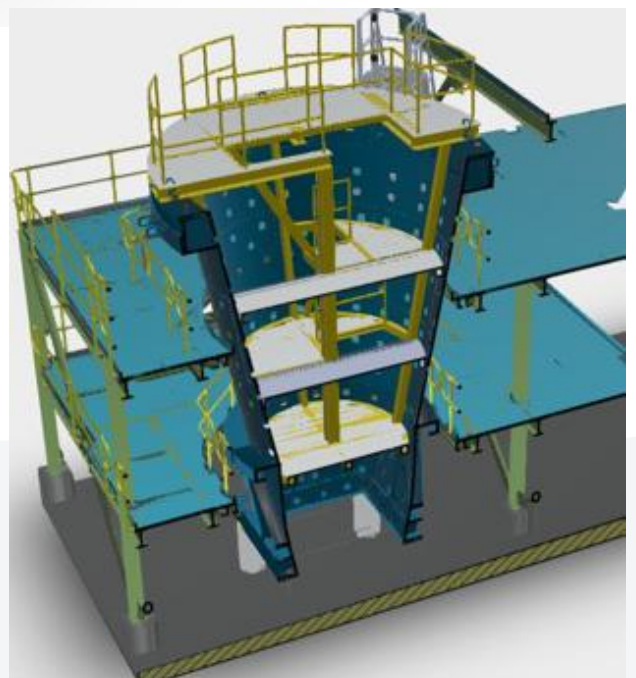
**DESCRIPTION:**

- Multiple piece platform set
- Drawing # 2367-S-00001
- Asset # OHP3-TLO2-AP005



**SOLELY FOR:**

1. Use at TLO2 maintenance bay for inspection/refurb of rotatable LOWER CHUTE.





# SPECIALISED CONVEYOR PLATFORMS

## SPECIALISED CONVEYOR PLATFORMS

# GENERAL BELT ACCESS PLATFORM

## AKA: SCORPION

### DESCRIPTION:

- Fitted with 4 swivel castors
- 150KG WLL, 2200mm platform height mobile platform
- Overall Dimensions (mm): 3248H x 2974L x 1806W
- Two loose ladders of different lengths that can be stowed on main platform
- Fitted with lifting lugs and forklift pockets
- Tare Weight: 701kg
- Drawing # 2360-S-00023
- Asset # OHP3-CNV-AP001

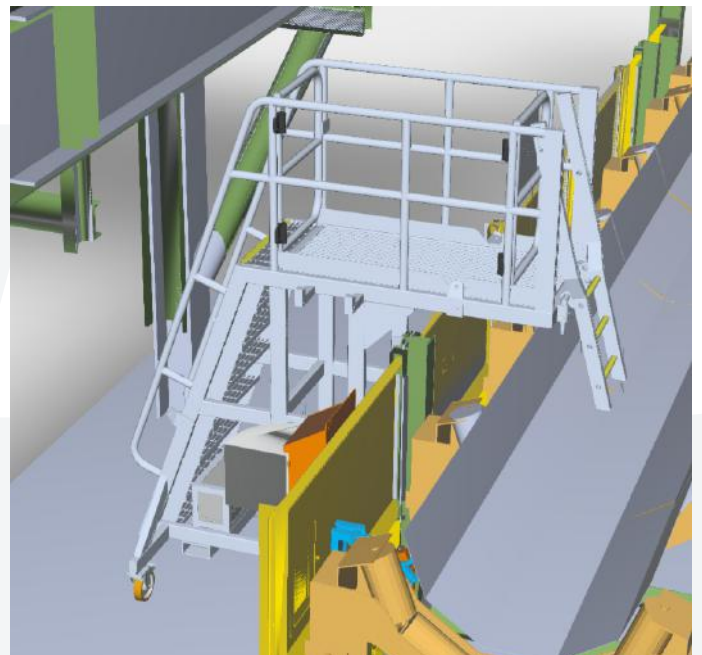


### CAUTION:

1. To be used on level & firm ground
3. Castors to be locked prior to PLATFORM use.
3. Last step onto belt may vary depending on location
4. Select most appropriate of the two ladders for descending onto belt.

### SOLELY FOR:

1. Use to access top of ground level conveyors.



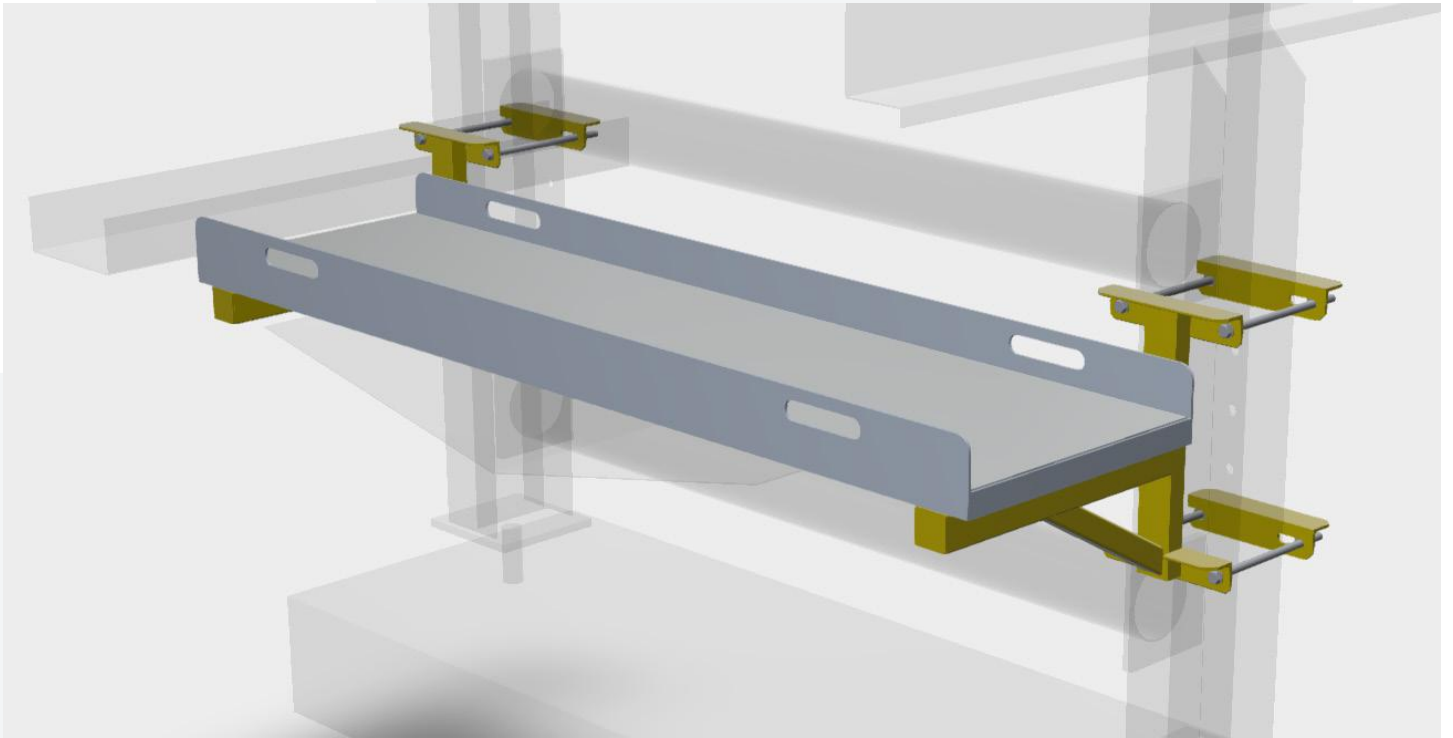
## SPECIALISED CONVEYOR PLATFORMS

# CV412 OVERLAND CONVEYOR STEP

## AKA: CRAYFISH

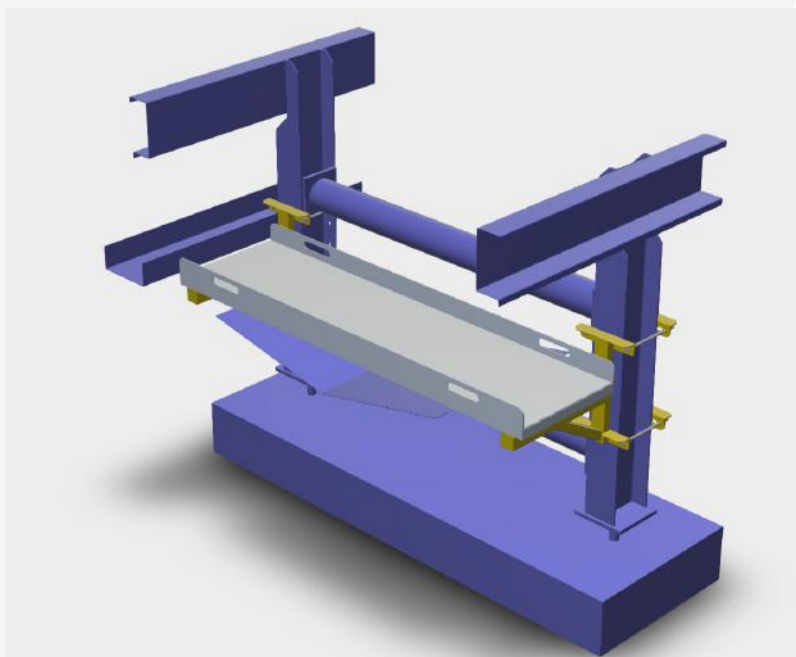
### DESCRIPTION:

- 150kg WLL PLANK
- Tare weight: 30kg
- Mounting brackets (2 off)
- Drawing # 2360-S-00027
- Asset #'s: PC2-CV412-AP001/2/3



### SOLELY FOR:

1. Use on overland conveyors to provide an elevated work platform.



## SPECIALISED CONVEYOR PLATFORMS

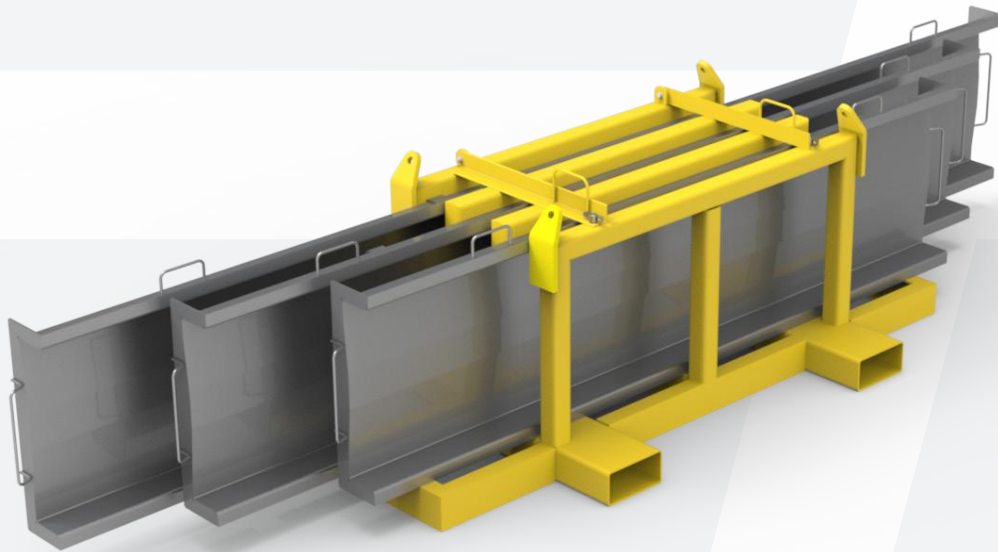
# RETURN IDLER CHANGE OUT PLATFORM SET

### AKA: MILLIPEDES

#### MULTIPLE PIECE PLATFORM SET COMPRISING;

- 150kg WLL PLANK of 2300mm length & 25kg tare weight & Asset #: OHP3-CV439-AP001
- 150kg WLL PLANK of 3000mm length & 32kg tare weight & Asset #: OHP3-CV434-AP001

- 150kg WLL PLANK of 3700mm length & 40kg tare weight & Asset #: OHP3-CV521-AP001
- Comes with Storage Rack with forklift pockets & lifting lugs
- Drawing # 860-S-12321

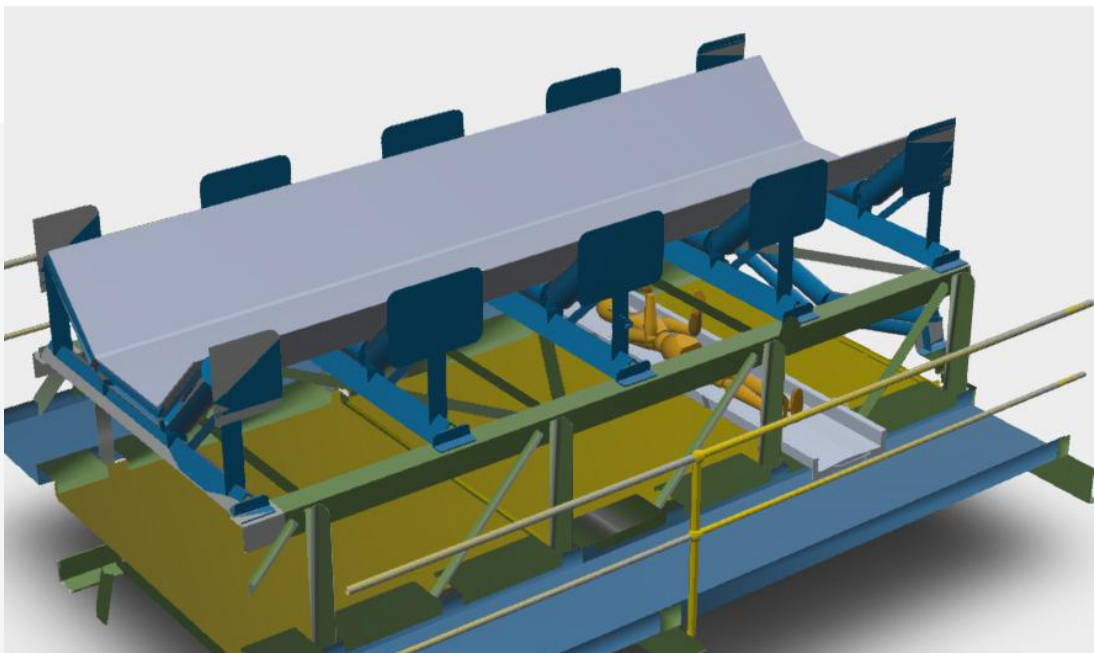


#### CAUTION:

1. Prior to lifting loaded rack, ensure red centre lines of 'planks' and rack are aligned to prevent 'plank' sliding out.

#### SOLELY FOR:

1. Use changing out conveyor return idlers.





# SPECIALISED REFURBISHMENT PLATFORMS

## SPECIALISED REFURBISHMENT PLATFORMS

# TS412 - MAINTENANCE PLATFORMS (EXTERNAL)

### AKA: ESCALADE

#### MULTIPLE PIECE PLATFORM SET COMPRISING;

- 500kg WLL LHS / RHS ACCESS PLATFORM of 1937kg tare weight Asset # TS412-CH412-AP002 & Drg. # 2365-S 00001
- 500kg WLL REAR ACCESS PLATFORM of 1742kg tare weight Asset # TS412-CH412-AP003 & Drg. # 2365-S-00002
- 500kg WLL GATE ACCESS PLATFORM of 1438kg tare weight Asset # TS412-CH412-AP001 & Drg. # 2365-S-00003

- Platforms provided with lifting lugs, forklift pockets & levelling jacks

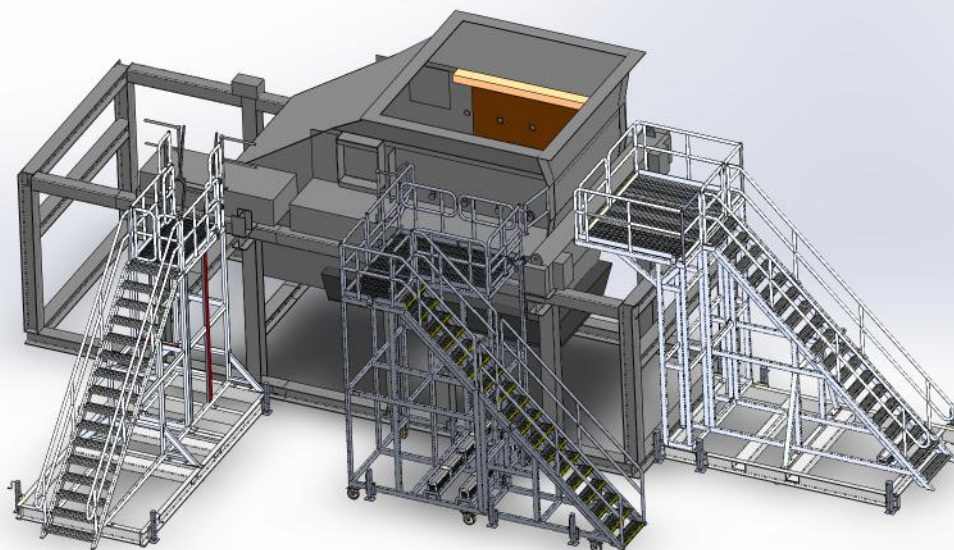


#### CAUTION:

1. All platforms to be levelled with jacks once in position.
2. Side access platform has drop-in handrails to be removed once platform in position.

#### SOLELY FOR:

1. Use for TS412 Rotable Chute refurbishment on site in transport frame.



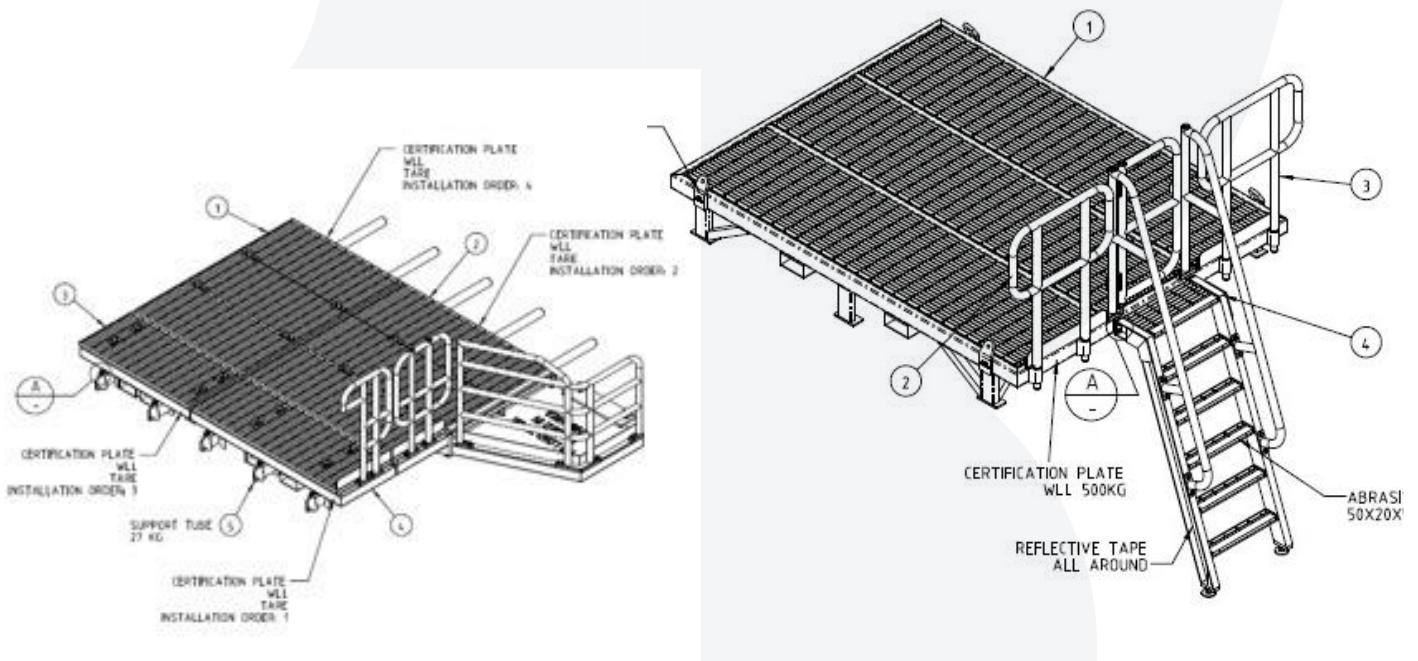
**SPECIALISED REFURBISHMENT PLATFORMS**

**TS412 - MAINTENANCE PLATFORMS (INTERNAL)**

**AKA: STING RAYS**

**MULTIPLE PIECE PLATFORM SET COMPRISING;**

- 500kg WLL BOTTOM DROP-IN PLATFORM of 142kg tare weight Asset # TS412-CH412-AP004 & Drg. # 2365-S-00004
- 500kg WLL MIDDLE DROP-IN PLATFORM of approx. 325kg tare weight Asset # TS412-CH412-AP005 & Drg. # 2365-S-00005
- 500kg WLL TOP DROP-IN PLATFORM of approx. 822kg tare weight Asset # TS412-CH412-AP006 & Drg. # 2365-S-00006
- Each platform is multi-piece

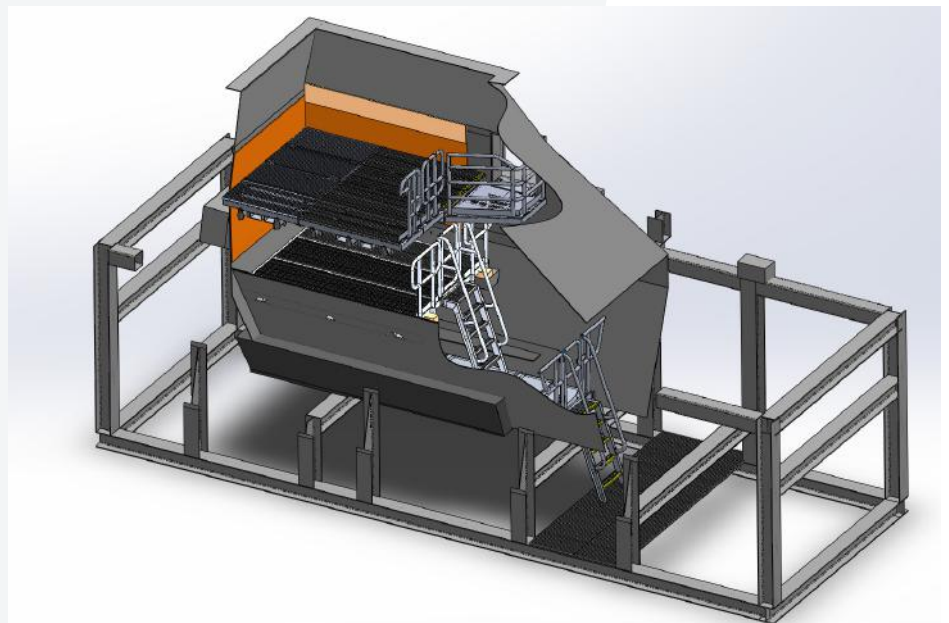


**CAUTION:**

1. Lowest level requires endplate to be secured with bolts at four locations.
2. Top platform to be installed as per drg. # 2365-S-00012.  
Note small portion of top deck no load to be landed in this area.

**SOLELY FOR:**

1. Use for TS412 Rotable Chute refurbishment on site in transport frame.



## SPECIALISED REFURBISHMENT PLATFORMS

# VS441 & VS461 INSPECTION PLATFORM PRIOR TO SHIPPING VIBRATING SCREEN FROM SITE

### AKA: MOM & BUB

#### MULTIPLE PIECE PLATFORM SET COMPRISING;

- ACCESS PLATFORM on inlet end of VIBE SCREEN - Asset # OHP3-BG440-AP006-INLET
- ACCESS PLATFORM on outlet end of VIBE SCREEN - Asset # OHP3-BG440-AP006-OUTLET

- Platforms provided with lifting lugs, forklift pockets & levelling jacks
- Drawing # 864-S-12171
- This set compatible on both PRODUCT & SCALPING SCREENS

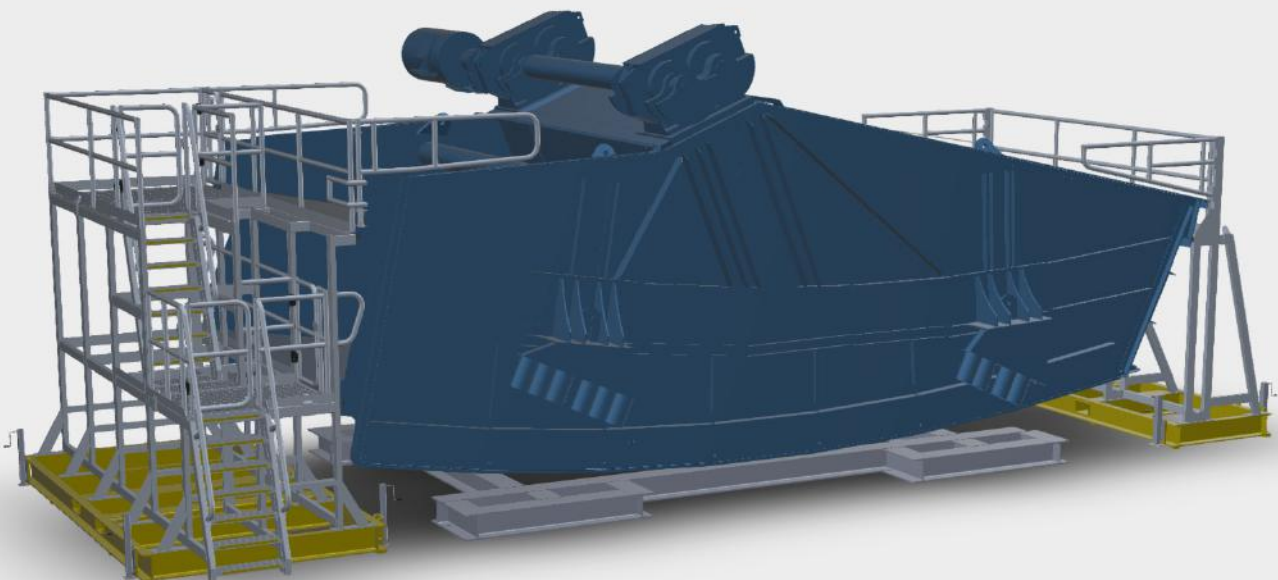


#### CAUTION:

1. Use jacks to level PLATFORM and ensure prior to use that all access gaps between PLATFORM and VIBRATING SCREEN are less than 100mm.

#### SOLELY FOR:

1. Use to access SCALPING & PRODUCT VIBRATING SCREENS once VIBE SCREENS at ground level and being prepared for cleaning in readiness for despatch via road transport.



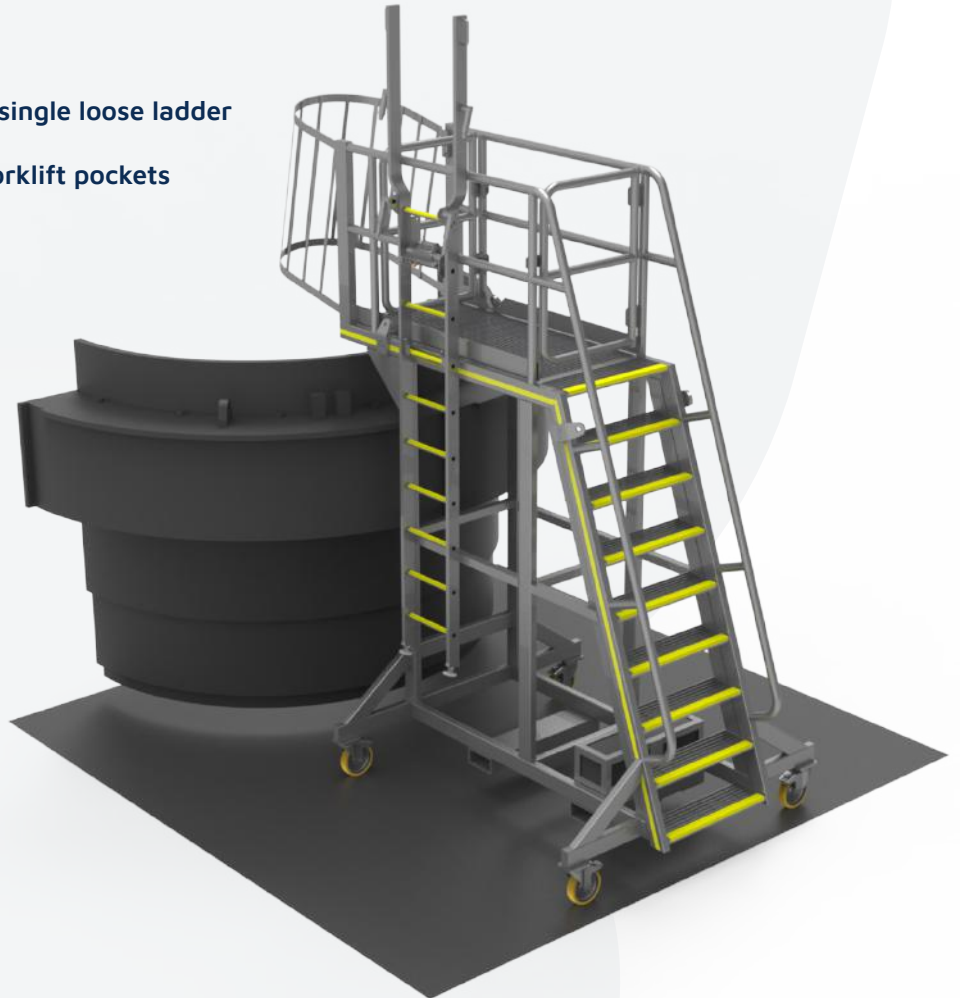
**SPECIALISED REFURBISHMENT PLATFORMS**

**SECONDARY CRUSHER BOWL ACCESS (YARD)**

**AKA: ELEPHANT**

**DESCRIPTION:**

- 400KG WLL one piece platform with single loose ladder
- Platform height: 2551mm
- Fitted with castors, lifting lugs and forklift pockets
- Tare Weight: 616kg
- Drawing # 863-S-12056
- Asset # OHP3-BG450-AP002

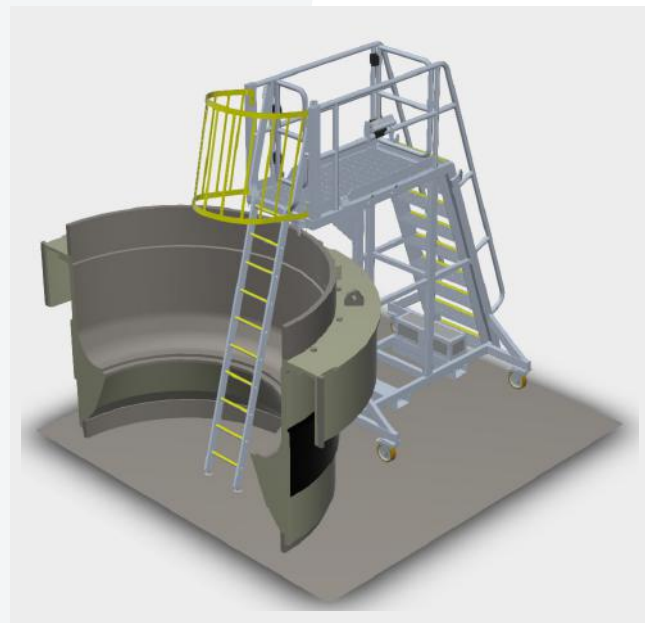


**CAUTION:**

1. Apply castor brakes prior to using PLATFORM.
2. Lift ladder into position prior to opening associated self-closing gate.
3. Ensure ladder feet are making contact with ground prior to descending ladder, otherwise ladder may suffer permanent distortion when loaded.

**SOLELY FOR:**

1. Accessing internals of SECONDARY CRUSHER BOWL or accessing top of BOWL for rigging purposes.



## SPECIALISED REFURBISHMENT PLATFORMS

# CH476 - TRANSPORT FRAME ACCESS PLATFORM

### AKA: TADPOLES

#### MULTIPLE PIECE PLATFORM SET COMPRISING;

- 250kg WLL STAIRS ACCESS PLATFORM of 1098kg Tare Weight Asset # OHP3-TSC-AP001 & Drg. # 2365-S-00008
- 500kg WLL SIDE ACCESS PLATFORM of 863kg Tare Weight Asset # OHP3-TSC-AP002 & Drg. # 2365-S-00007
- 250kg WLL TOP ACCESS PLATFORM of 1429kg Tare Weight Asset # OHP3-TSC-AP003 & Drg. # 2365-S-00009

- Platforms provided with lifting lugs, forklift pockets & levelling jacks

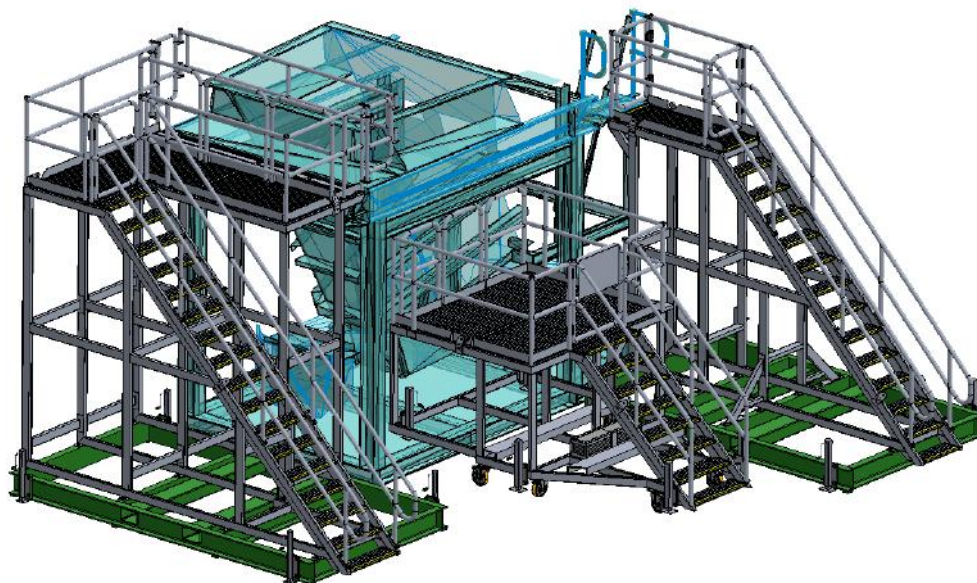


#### CAUTION:

1. All platforms to be levelled with jacks once in position.
2. Drop-in handrails to be removed once platform in position.

#### SOLELY FOR:

1. Use at LOW FLOW CONVEYOR DISCHARGE CHUTES when on Site and on transport skid. Refer to drawings for applicable chutes.





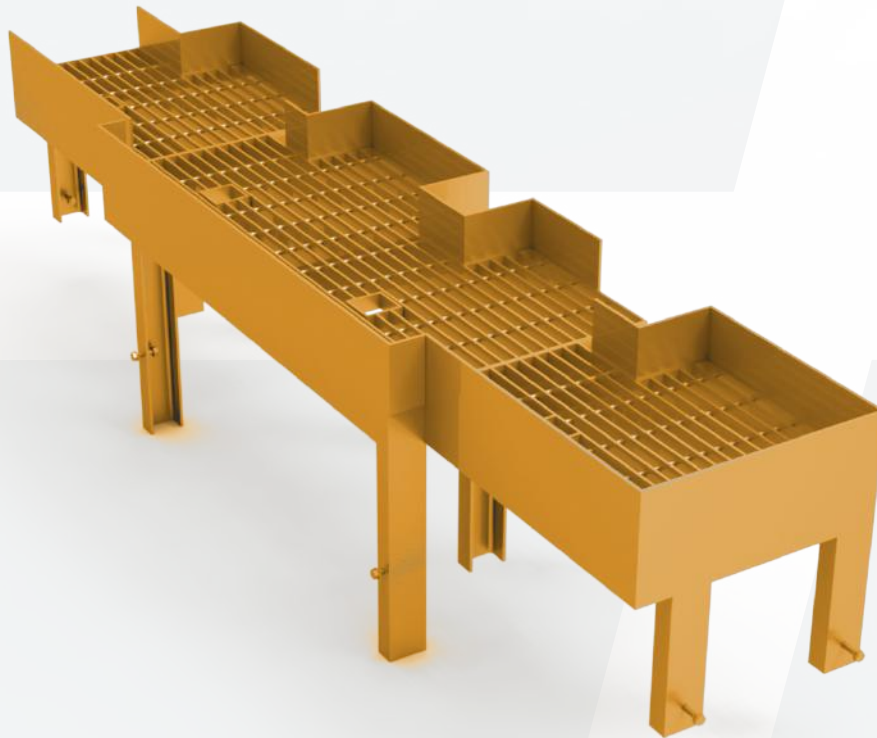
# FIXED INSTALLATIONS

## FIXED INSTALLATIONS

# PRIMARY CRUSHER LUBRICATING OIL FILTER CHANGEOUT ACCESS

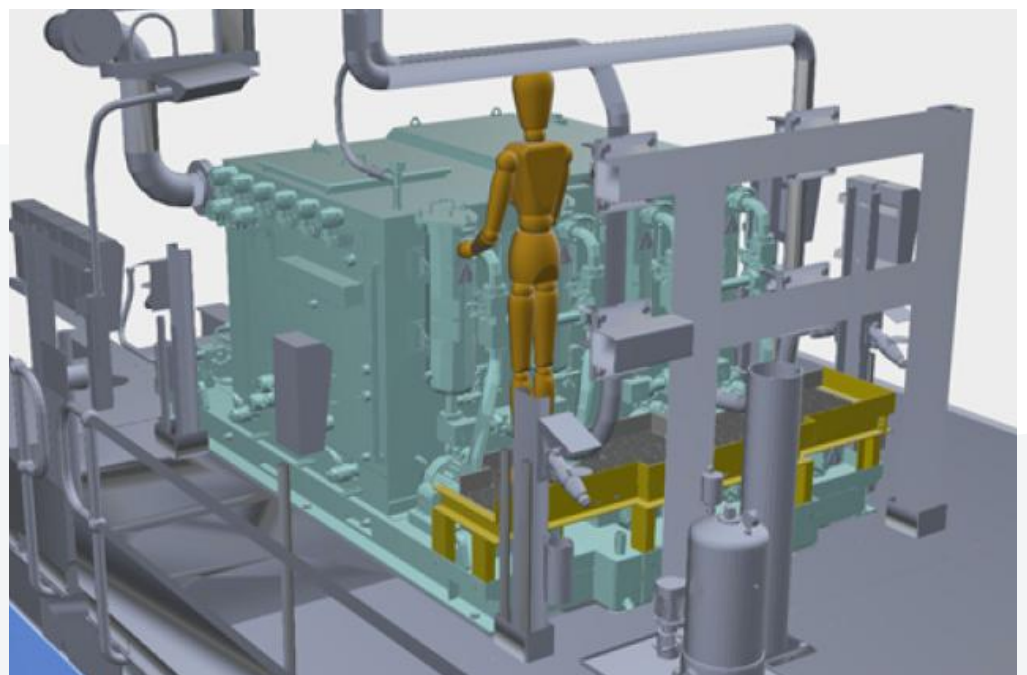
**AKA: MORETON BUG**

• Drawing # 2361-S-00027



### SOLELY FOR:

1. Use at PC1 and PC2 in order to ease access to LUBE OIL FILTERS for CARTRIDGE change-out.

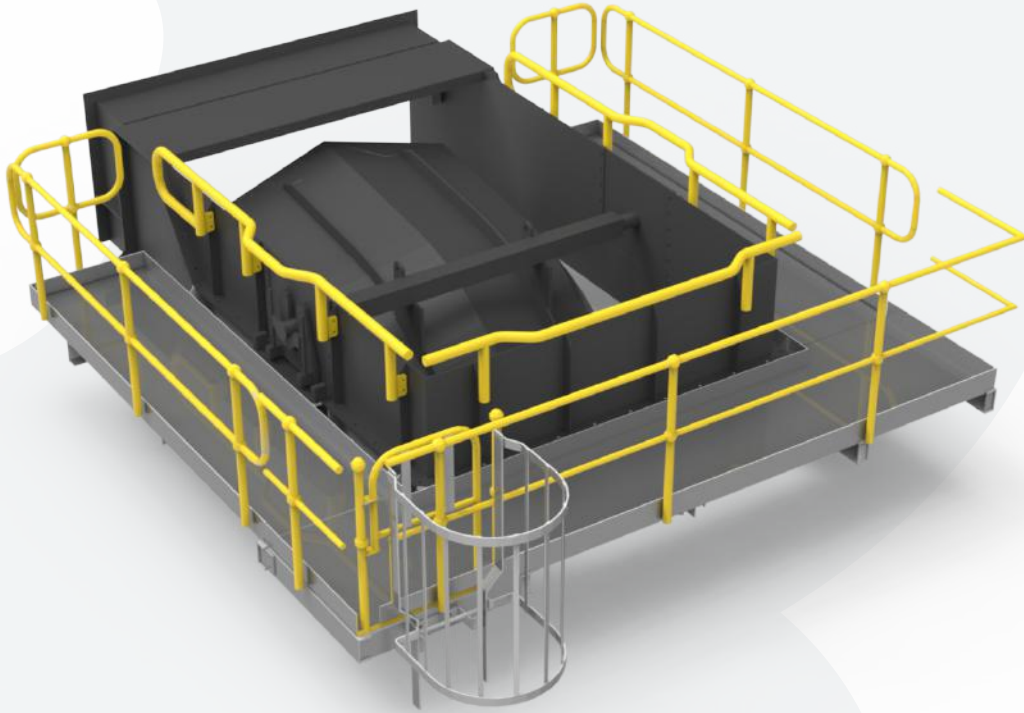


**FIXED INSTALLATIONS**

**ST04 & ST05 HEAD CHUTE HANDRAIL**

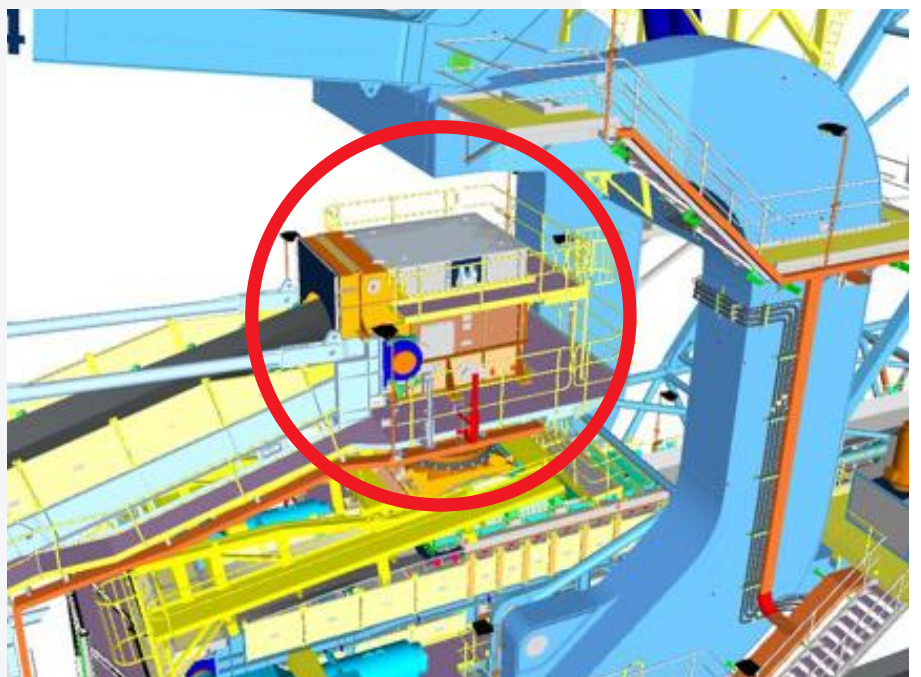
**AKA: INCH WORMS**

• Drawing # 866-S-12277



**SOLELY FOR:**

1. Use at ST04 & ST05 to enable hinged lid of HEAD CHUTE to be opened without exposing technician to fall risk.



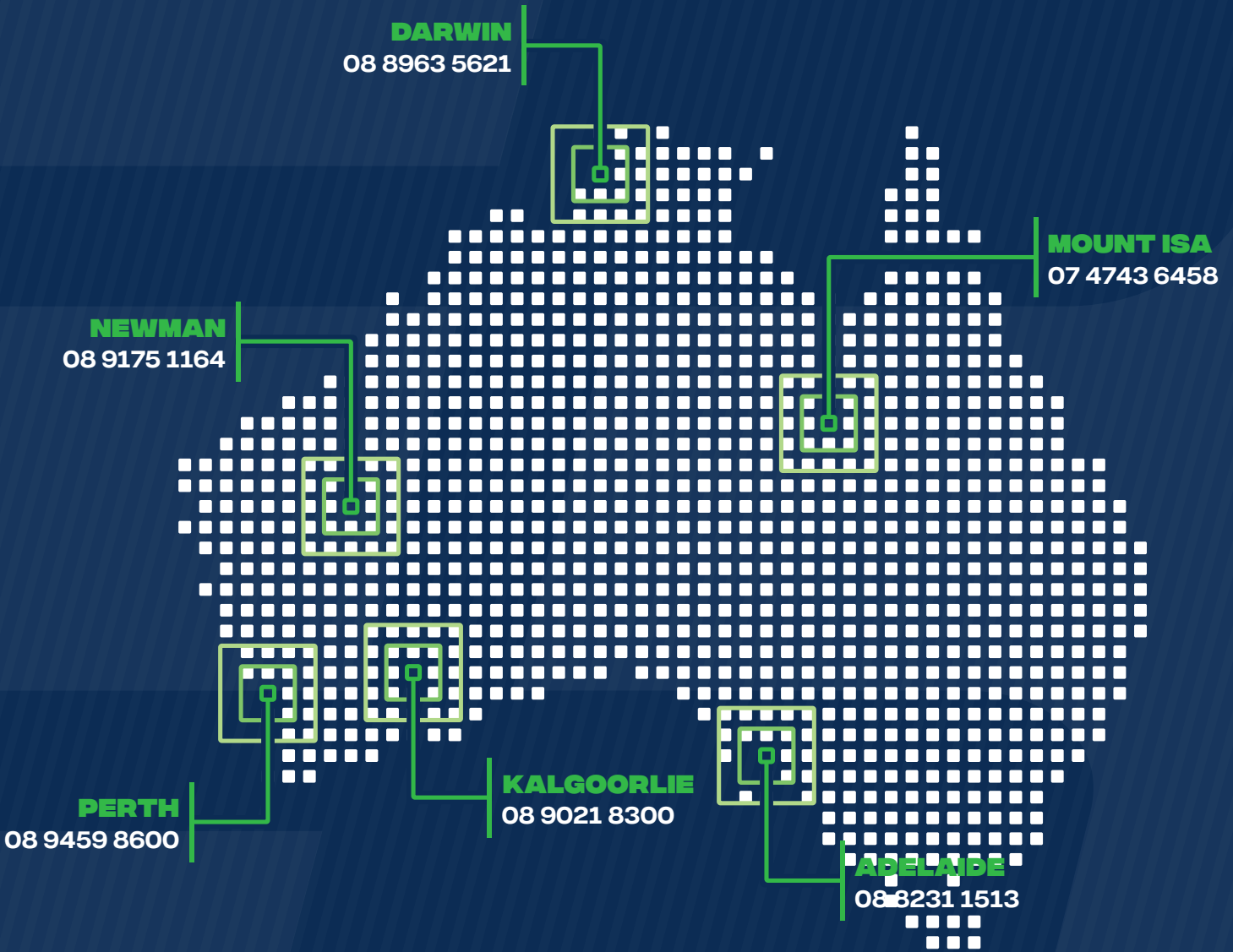
# TAKE NOTE



**B** BIGGER THAN BUSINESS

# TAKE NOTE

A large grid area for taking notes, consisting of a 30x30 grid of small squares. The grid is light gray and occupies most of the page's central area.



 [sales@bendtechgroup.com.au](mailto:sales@bendtechgroup.com.au)

 [www.bendtechgroup.com.au](http://www.bendtechgroup.com.au)

