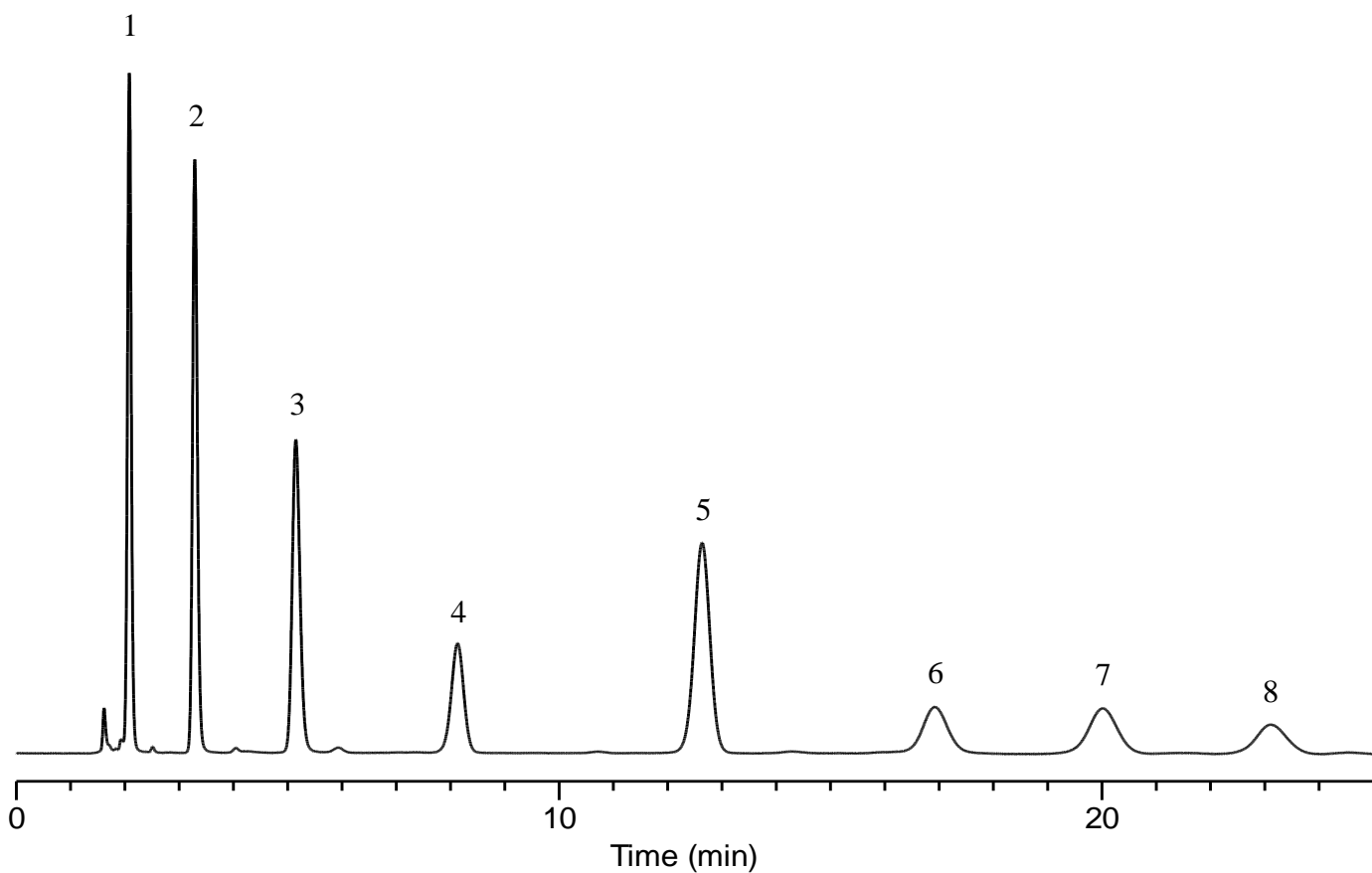


# InertSearch™ for LC

Inertsil™ Applications

## Analysis of Plant hormones

Data No. LB607-0806



### Conditions

**Column** : InertSustain Cyano (5  $\mu$  m, 150 x 4.6 mm I.D.)  
**Column Cat. No.** : 5020-89276  
**Eluent** : A) CH<sub>3</sub>OH  
B) 0.1% H<sub>3</sub>PO<sub>4</sub> in H<sub>2</sub>O  
A/B = 10/90, v/v  
**Flow rate** : 1.0 mL/min  
**Col. Temp.** : 40 °C  
**Detection** : UV 210 nm  
**Injection Vol.** : 2  $\mu$  L  
**Sample** : Standard

### Analyte:

1. <i>trans</i> -Zeatin	50 mg/L
2. Kinetin	50 mg/L
3. 6-Benzylaminopurine	50 mg/L
4. Gibberellin A3	200 mg/L
5. Indole-3-acetic acid	50 mg/L
6. <i>trans,trans</i> -Abscisic acid	200 mg/L
7. <i>cis,trans</i> -Abscisic acid	200 mg/L
8. Jasmonic Acid	200 mg/L