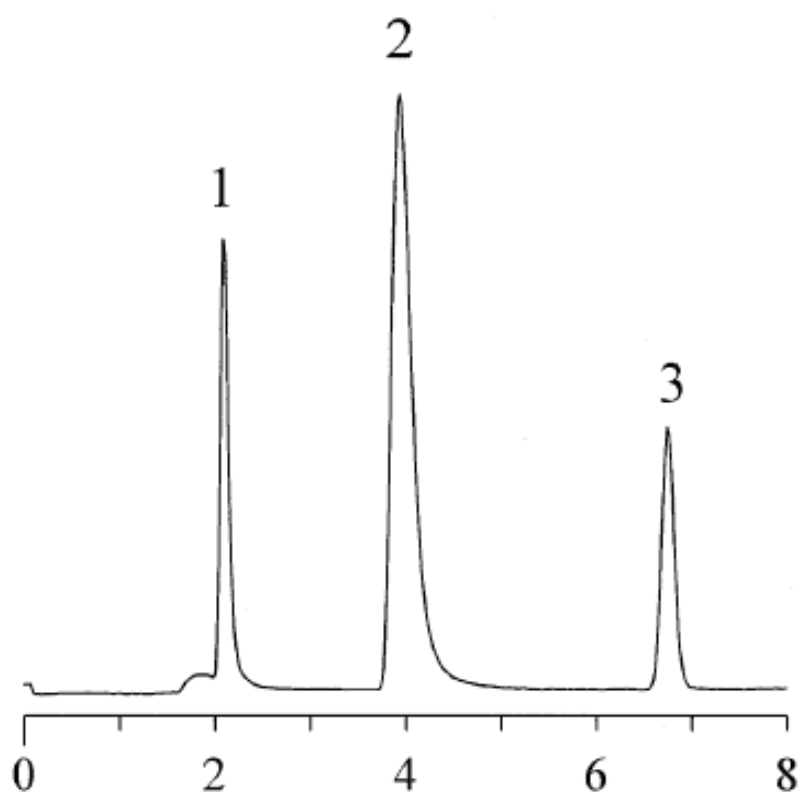
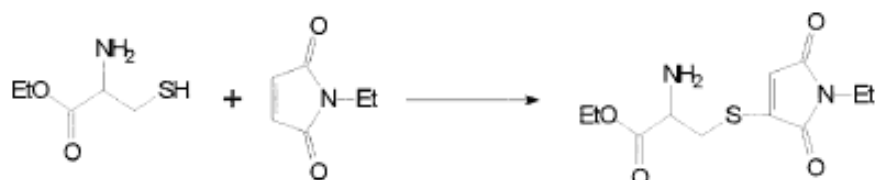


Ethyl cystein N-ethylmaleimide adduct

Data No. LA202-0000



Column	: Inertsil ODS-P 5µm 150 × 4.6mmI.D.	Solutes	: 1. Cystein N-ethylmaleimide adduct (1.2µg) 2. Ethyl cystein N-ethylmaleimide adduct (6µg) 3. N-ethylmaleimide (6µg)
Column Cat. No. :			
Eluent	: 20mM KH ₂ PO ₄ / H ₂ O = (2 : 1)		
Flow rate	: 0.4 mL/min.		
Col. Temp.	: 25°C		
Detection	: UV 250 nm		
Injection Vol.	:		
Sample	: 1. Cystein N-ethylmaleimide adduct (1.2µg) 2. Ethyl cystein N-ethylmaleimide adduct (6µg) 3. N-ethylmaleimide (6µg)		