

# WILSON CAMP



20  
25

The Wilson School

for campers preschool - grade 6  
register at [wilsonschool.com](http://wilsonschool.com)

# SUMMER CAMP AT WILSON

Dear Parents,

The Wilson School Summer Camp offers age-appropriate activities to promote both growth and fun. Our carefully planned sessions balance structure and exploration, providing diverse opportunities for your child. From creative projects to physical activities, each week promises new skills and memorable experiences.

The camp is led by experienced faculty and enthusiastic college-aged counselors. Your child's safety and well-being are our top priorities, ensuring they have a thriving and enjoyable summer.

**This summer, we are expanding our offerings to accommodate our ever-popular five and six-year-old age group. Please look for those changes in our brochure!**

We look forward to having your family join us for a season of laughter, learning, and new friendships.

Warm regards,

*Stephanie Wiegert*

Stephanie Wiegert  
Summer Camp Director





## **CAMP LOCATION**

The Wilson School, 400 DeMun Ave., Clayton, MO, 63105

## **CAMP HOURS**

Regular Camp Hours:

9:00 AM - 3:00 PM, Monday - Friday; \$325/week  
(\$260/weeks of June 16 and June 30)

Afternoon Extended Day:

3:00 PM - 6:00 PM, Monday - Friday; \$95/week  
(\$76/weeks of June 16 and June 30)

Early Morning Care:

7:30 AM - 9:00 AM, Monday - Friday

*No reservations required or fee charged for morning care.*

## **CAMP REGISTRATION, FEES & PAYMENT**

Register online at [wilsonschool.com](http://wilsonschool.com). A minimum 25% non-refundable registration fee is required in advance and will be applied to your child's first week of camp. Tuition must be paid in full by May 31, 2025. We do not offer partial weeks or refunds for non-attendance.

## **CAMP T-SHIRT**

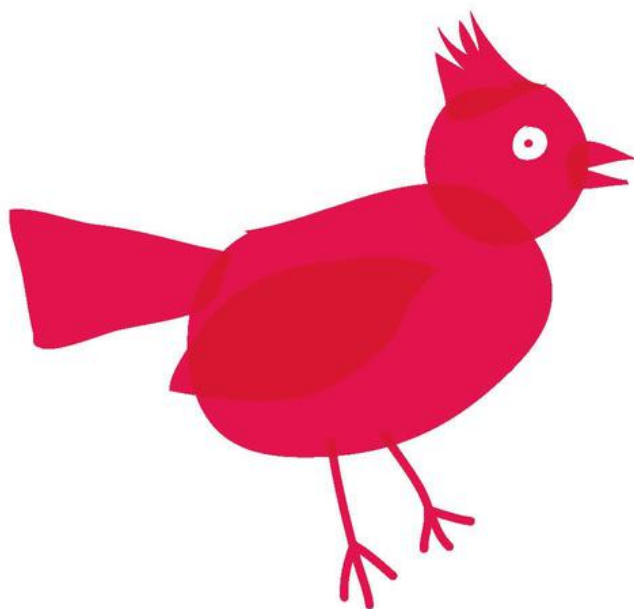
Register by May 2, 2025 to receive your child's free camp t-shirt.

## **QUESTIONS?**

Contact our Summer Camp Director, Stephanie Wiegert, at [swiegert@wilsonschool.com](mailto:swiegert@wilsonschool.com).

# redbirds

► For campers ages 3 or 4 by June 2025



Our youngest campers participate every day in story time, creative movement, dramatic play, arts and crafts, outdoor play, and rest time. They have daily water play at The Wilson School. Campers need to bring a snack, lunch, water bottle, towel, sunscreen, and a change of clothes.



**Weekly registration available. Tuition:** \$325 weekly (\$260 week 2 and week 4)

---

### June 9, June 16 (weeks 1 & 2)

#### **Little Farmers**

Plant seeds, care for mini gardens, and learn about farm animals through sensory bins, songs, and crafts. Activities include creating veggie art, building a pretend farmers' market, and enjoying "tractor" rides (pull wagons). Camp is closed on June 19 and tuition is \$260 for the week.

### July 7, July 14 (weeks 5 & 6)

#### **Splish Splash Bash**

Water play galore! Enjoy sprinklers, water tables, bubble art, and ocean-themed crafts. A highlight is a Redbird water parade to celebrate summer fun.

### June 23, June 30 (weeks 3 & 4)

#### **Tiny Travelers**

Explore transportation by crafting planes, trains, and cars. Activities include toy car races, paper airplane challenges, and creating a giant transportation mural. Camp is closed on July 4 and tuition is \$260 for week.

### July 21, July 28 (weeks 7 & 8)

#### **Animal Adventures**

Embark on a journey to discover animals from around the world! Learn about furry, feathery, and scaly friends through songs, crafts, and pretend play. Activities include creating animal masks, crafting mini habitats, and an animal-themed parade.

*Please Note: Children must be completely independent in taking care of their bathroom needs by the first day of camp. Campers who are 4.5 years of age and do not require rest time can consider enrolling in the Yellow Lions group.*



NEW GROUP!  
ON-SITE WATER PLAY  
NO REST TIME

# yellow lions

► For campers age 4.5 - entering Kindergarten





This year, we are pleased to offer an additional group to better accommodate our younger campers. The reimagined Yellow Lions group will have all the fun of our typical camp sessions, but include water play at school rather than off-site. As always, campers should bring a snack, lunch, water bottle, towel, swimsuit, sunscreen, and a change of clothes each day.



**Weekly registration available. Tuition:** \$325 weekly (\$260 week 2 and week 4)

---

### June 9, June 16 (weeks 1 & 2)

#### **Magical Forest Adventures**

Explore enchanted woods with fairy tales, mythical creatures, and forest-themed crafts. Activities include making fairy houses, leaf rubbings, and a scavenger hunt. Camp is closed on June 19 and tuition is \$260 for the week.

### July 7, July 14 (weeks 5 & 6)

#### **Pirates & Mermaids**

Embark on a swashbuckling adventure with treasure maps, pirate hats, and ocean crafts. Campers will make pirate ships and host a treasure hunt.

### June 23, June 30 (weeks 3 & 4)

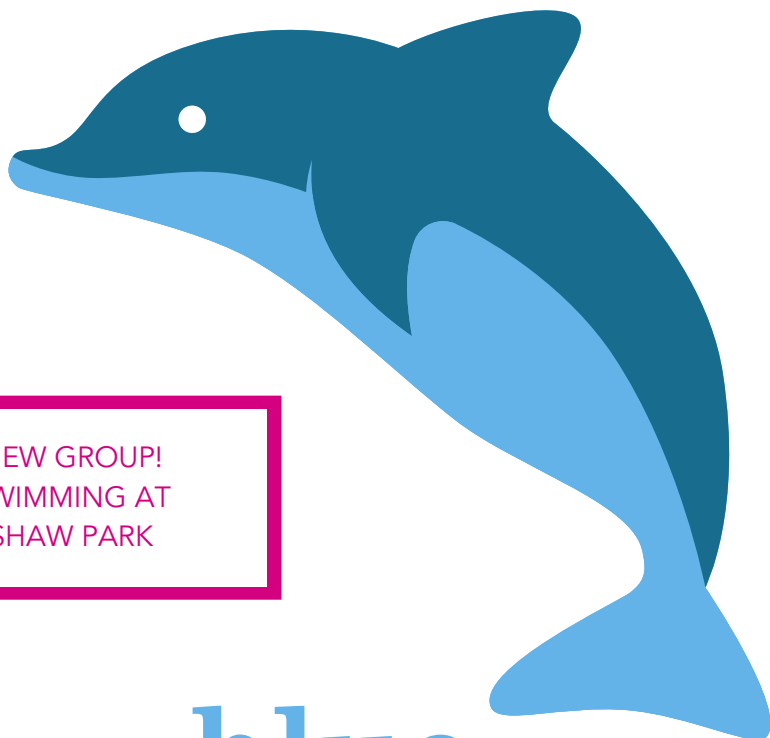
#### **Blast Off to Space**

Explore the solar system by building rockets, crafting constellations, and conducting moon phase experiments. Highlights include a space-themed relay race and glow-in-the-dark galaxy jars. Camp is closed on July 4 and tuition is \$260 for the week.

### July 21, July 28 (weeks 7 & 8)

#### **STEM with The Magic House**

Campers dive into hands-on STEM adventures led by The Magic House! Through interactive lessons and experiments, they'll explore science, technology, engineering, and math in exciting and creative ways.



NEW GROUP!  
SWIMMING AT  
SHAW PARK

# blue dolphins

► For campers entering Kindergarten and Grade 1





The Blue Dolphins group is similar to what was previously known as the Yellow Lions group. The daily schedule includes organized games, age-appropriate enrichment activities, and sports. In addition, we provide regular field trips to Shaw Park Aquatic Center for swimming and other activities and special assemblies. All campers are required to take a swimming test before they can enter the main pool or the diving tank. Campers need to bring a snack, lunch, water bottle, towel, swimsuit, and sunscreen.



**Weekly registration available. Tuition:** \$325 weekly (\$260 week 2 and week 4)

### June 9, June 16 (weeks 1 & 2)

#### **Magical Forest Adventures**

Explore enchanted woods with fairy tales, mythical creatures, and forest-themed crafts. Activities include making fairy houses, leaf rubbings, and a scavenger hunt. Camp is closed on June 19 and tuition is \$260 for the week.

### July 7, July 14 (weeks 5 & 6)

#### **Pirates & Mermaids**

Embark on a swashbuckling adventure with treasure maps, pirate hats, and ocean crafts. Campers will make pirate ships and host a treasure hunt.

### June 23, June 30 (weeks 3 & 4)

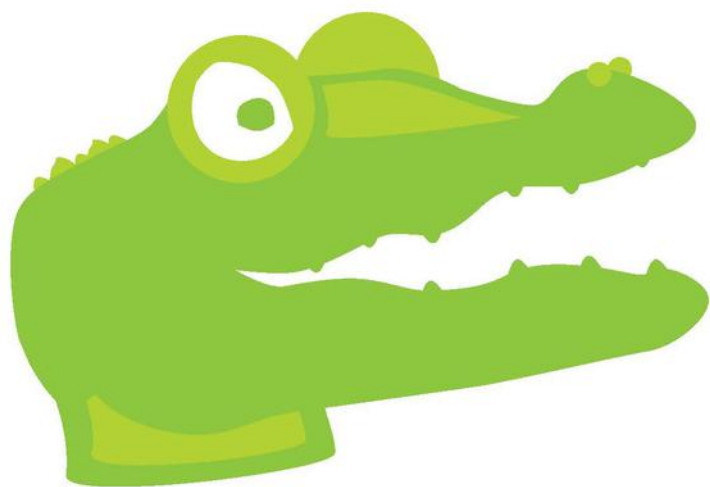
#### **Blast Off to Space**

Explore the solar system by building rockets, crafting constellations, and conducting moon phase experiments. Highlights include a space-themed relay race and glow-in-the-dark galaxy jars. Camp is closed on July 4 and tuition is \$260 for the week.

### July 21, July 28 (weeks 7 & 8)

#### **STEM with The Magic House**

Campers dive into hands-on STEM adventures led by The Magic House! Through interactive lessons and experiments, they'll explore science, technology, engineering, and math in exciting and creative ways.



# green alligators

► For campers entering Grades 2 and 3



The daily schedule includes organized games, age-appropriate enrichment activities, and sports. In addition, we provide regular field trips for swimming at Shaw Park Aquatic Center and other activities and special assemblies. All campers are required to take a swimming test before they can enter the main pool or the diving tank. Campers need to bring a snack, lunch, water bottle, towel, swimsuit, and sunscreen.



**Weekly registration available. Tuition:** \$325 weekly (\$260 week 2 and week 4)

---

### June 9 (week 1)

#### **Mini Think Camp**

Discover the wonders of STEM through hands-on building projects, creative problem-solving, and engaging activities. Get a sneak peek into the fun and exploration of Think Camp!

### June 16 (week 2)

#### **Big Top Fun with Kinetic Tapestry**

Step into the circus with juggling games, acrobat challenges, and creative clown crafts! Camp is closed on June 19 and tuition is \$260 for the week.

### June 23, June 30 (weeks 3 & 4)

#### **Wildlife Rangers**

Discover local wildlife, build birdhouses, and investigate habitats. Make animal track molds, participate in a nature scavenger hunt, and create animal posters. Camp is closed on July 4 and tuition is \$260 for the week.

### July 7, July 14 (weeks 5 & 6)

#### **Squishy Circuits**

Students explore electrical engineering by combining dough and circuits to create models that light up, spin, and make noise. This session culminates in a creative dough circuit challenge!

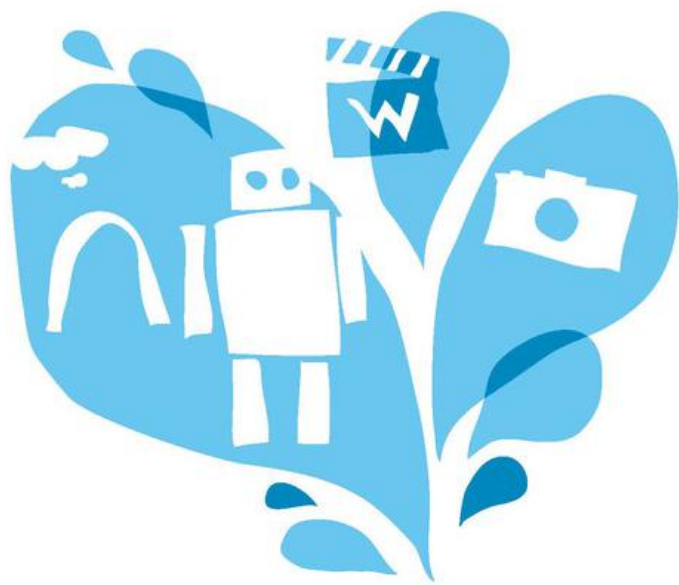
### July 21, July 28 (weeks 7 & 8)

#### **Mission: Spy School**

Step into the world of secret agents during this action-packed theme. Campers will learn to decode messages, create secret identities, and build spy gadgets to complete thrilling missions.

# seniors

► For campers entering Grades 4 through 6



The daily schedule includes organized games, age-appropriate enrichment activities, and sports. In addition, we provide regular field trips for swimming at Shaw Park Aquatic Center and special assemblies. All campers are required to take a swimming test before they can enter the main pool or the diving tank. Campers should bring a snack, lunch, water bottle, towel, swimsuit, and sunscreen.



**Weekly registration available. Tuition:** \$325 weekly (\$260 week 2 and week 4)

### June 9 (week 1)

#### **Mini Think Camp: Minecraft**

Team up with your friends for a mini-build project in Minecraft and experience a glimpse of Think Camp's exciting challenges.

### June 16 (week 2)

#### **Destination Imagination**

Unleash the power of your imagination to solve mind-bending problems. Work in teams to solve timed challenges. Camp is closed on June 19 and tuition is \$260 for the week.

### June 23 (week 3)

#### **Bike St. Louis**

Campers will explore destinations in and around Forest Park by bicycle. The week culminates in a fun scavenger hunt! Must have their own bike and helmet and be comfortable riding independently.

### June 30 (week 4)

#### **Minute to Win It**

A week of fast-paced fun! Campers tackle creative challenges and teamwork tasks, ending with an epic championship showdown. Camp is closed on July 4 and tuition is \$260 for the week.

### July 7, July 14 (weeks 4 & 5)

#### **Kicks & Combos**

Soccer drills and scrimmages in Week 4, followed by martial arts techniques and a showcase in Week 5!

### July 21 (week 7)

#### **Mini Think Camp: Bloxels**

Develop your own video game with the aid of Bloxels Game Design. Create your own characters, villains, and power-ups for use in your game. Tell a story and have fellow campers play through the levels of your imagination.

### July 28 (week 8)

#### **Around the World**

Campers embark on a global adventure, exploring cultures through games, crafts, music, and cuisine. Each day highlights a different region, culminating in a World Showcase to share their discoveries!



# SEE YOU THIS SUMMER!



The Wilson School  
400 DeMun Avenue  
Clayton, MO 63105

[WILSONSCHOOL.COM](http://WILSONSCHOOL.COM)