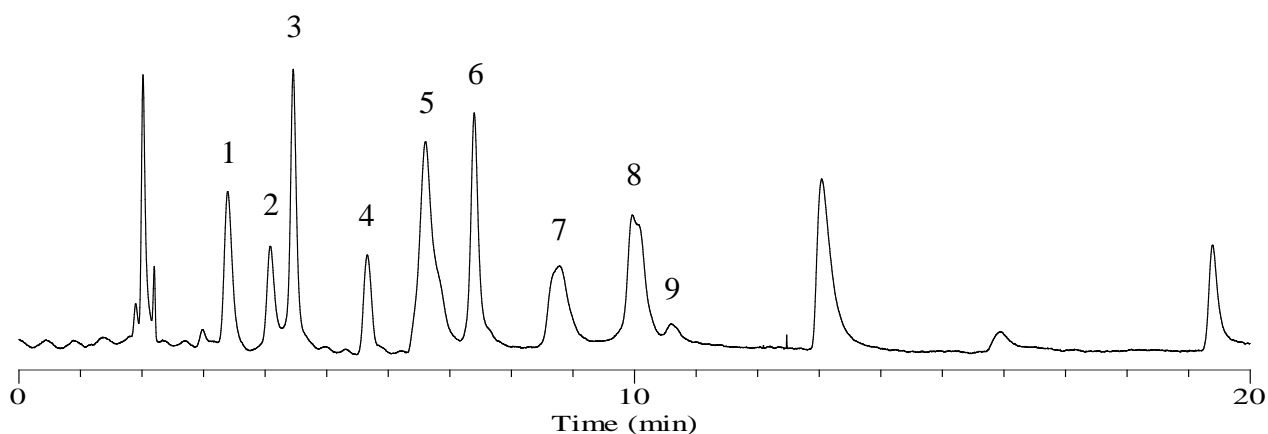


# InertSearch™ for LC

Inertsil® Applications

## Analysis of Peptides and Proteins

Data No. LB796-0000



### Conditions

**Column** : ProteoSil 300-C4 (GL Sciences Inc.)  
(5  $\mu$  m, 150 x 4.6 mm I.D.)  
**Column Cat. No.** : 5020-42128  
**Eluent** : A) 0.2 % HCOOH in (CH<sub>3</sub>CN/H<sub>2</sub>O = 90/10, v/v)  
B) 0.2 % HCOOH in H<sub>2</sub>O

Time (min)	A (vol%)	B (vol%)
0.0	20	80
20.0	80	20

**Flow Rate** : 1.0 mL/min  
**Col. Temp.** : 30 °C  
**Detection** : UV 280 nm  
**Sample** : Standard

### Analyte :

1. Neurotensin	(M.W. 1,673)
2. Leucin Enkephalin	(M.W. 556)
3. Cytochrome C	(M.W. 12,000)
4. Insulin	(M.W. 6,000)
5. BSA	(M.W. 66,000)
6. Myoglobin	(M.W. 17,000)
7. Creatine amidinohydrolase	(M.W. 43,000)
8. Ovalbumin	(M.W. 45,000)
9. Creatinine amidohydrolase	(M.W. 170,000)