



ENGINEERED SOLUTIONS

Pavers + Retaining Walls + Site Solutions



Engineered Solutions

BY READING ROCK, INC.



TRUST. INNOVATION. REPUTATION.

Since the 70's, we have offered best-in-class solutions to the hardscape industry. With our cutting-edge, face-mix technology, the PaverLock Elite paver collections are setting a new standard for excellence. And they're the perfect complement to our already stunning collection of retaining walls.



EXCELLENCE. AFFORDABILITY. EFFICIENCY.

Engineered for simplicity, our extensive portfolio of pavers and retaining wall products are recognized as leading the industry in Solutions. As a single-source provider of wall and paver products, Reading Rock will help streamline your estimating, selling, and design processes with our support tools and experienced associates.

QUALITY. BEAUTY. DURABILITY.

Our hardscape products are manufactured in Cincinnati, Ohio and Champaign, Illinois. We follow the highest standards for plant facilities and have approval to supply material to various DOTs and certification from organizations such as NPCA and CSI. Second to none, our collections of PaverLock Elite pavers offer stunning color options and styles with a specially formatted texture that is remarkably dense and yields everlasting vibrancy to any outdoor project. PaverLock Elite complements our industry leading wall portfolio offering best-in-class solutions for all your hardscape project needs.

WANT TO LEARN MORE...
BRING YOUR TEAM AND JOIN US FOR A PLANT TOUR.

LEARN MORE ABOUT OUR PRODUCTS

PAVING SYSTEMS.....	4
Architectural Pavers.....	4
2 cm Porcelain Tile Pavers.....	6
Permeable Pavers.....	8
PaveDrain Pavers.....	8
Open Grid Pavers.....	9
Clay Pavers	9
PaverLock Elite Pavers.....	10
URBAN COLLECTION.....	12
Standard Pavers.....	12
ADA Pavers.....	12
Site Amenities.....	13
RETAINING WALL SYSTEMS.....	16
Allan Block AB Collection.....	16
Allan Block Metropolitan Collection.....	18
Allan Block Europa.....	19
Recon.....	22
ACCESSORIES	24
CASE STUDIES	26

ARCHITECTURAL PAVERS



ARCHISLAB

ArchiSlab™ is a traditional smooth matte finish paver that provides variegated or monotone options for roof and/or grade applications.



ARCHISLAB
(H) 2 $\frac{3}{8}$ " x (D) 24" x (L) 24"

ArchiSlab XL larger paving stones to match the grandness of common areas or courtyards. Also offered with a false joint score providing a design element without the extra work.



ARCHISLAB XL
(H) 2 $\frac{3}{8}$ " x (D) 24" x (L) 36"



ARCHISLAB XL (with False Joint
to complement ArchiSlab XL)
(H) 2 $\frac{3}{8}$ " x (D) 24" x (L) 36"



ARCHISLAB

ArchiLine provides a stunning linear option on a smaller scale. The blends of this linear face-mix paver are dynamic in common areas.



(H) 2 $\frac{3}{8}$ " x (D) 5 $\frac{5}{8}$ " x (L) 12"



(H) 2 $\frac{3}{8}$ " x (D) 5 $\frac{5}{8}$ " x (L) 16"



(H) 2 $\frac{3}{8}$ " x (D) 5 $\frac{5}{8}$ " x (L) 20"

Multiple color options available in each Collection. Options available in SRI of 29 or greater. See an associate for details.







ROOFTOP PAVER BENEFITS:

- 1 Create functional space in previously unusable areas.
- 2 Provide additional protection to extend the life of your roof.
- 3 Choosing light colored finishes can reduce heat absorption and overall energy costs.
- 4 Reduce heat island effect with light colored finishes.

With our offering of concrete and porcelain tile pavers, your next rooftop design is sure to be elegant and simpler from start to finish!

COLORS

MONOTONE

				
CHOCOLATE	COAL	HAZELNUT	IRON	PEARL

BLENDS

				
BUCKHORN	BURNT RED	CRIMSON	MESQUITE	MIDNIGHT SKY
				
MISTY GREY	PIKE PLACE	SANDSTONE	SANDY OAK	SEA SHELL

COLORS	REFLECTANCE
CHOCOLATE	SRI 7
HAZELNUT	SRI 39
IRON	SRI 23
MISTY GREY	SRI 39
PEARL	SRI 55
SEA SHELL	SRI 44
SANDSTONE	SRI 31
SANDY OAK	SRI 37

2 CM PORCELAIN TILE PAVERS

In addition to creating wonderful rooftop applications, porcelain tile can be used at grade for entry ways, plazas and virtually any other area of your site. Beautiful textures, styles and sizes provide you with limitless options.



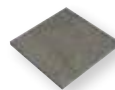
PORCELAIN MOONSTONE PAVERS



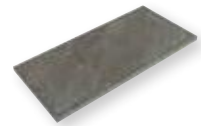
PORCELAIN MONOCHROMATIC BASALT, ASH, BONE



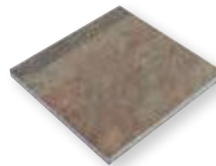
12 X 12
(H) 3/4" x (D) 11 3/4" x (L) 11 3/4"



12 X 23
(H) 3/4" x (D) 11 3/4" x (L) 23 1/2"

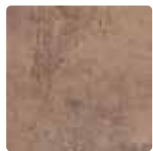


23 X 23
(H) 3/4" x (D) 23 1/2" x (L) 23 1/2"



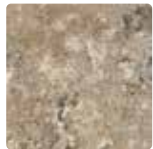
COLLECTIONS

COTTA

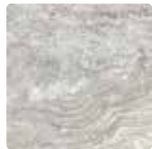


COTTO

ICON TRAVERTINE



ANDES
CAPPUCCINO



ANDES SHELL



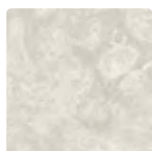
ANDES SILVER



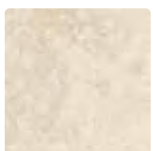
PEARL



RIVER



TIVOLI'S AVORIO

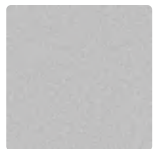


TIVOLI'S CREMA



TIVOLI'S
WALNUT

MONOCHROMATICA



ASH



BASALT



BONE



COGNAC



LEATHER



SAND

OCEAN STONE



BLACK



WHITE COOL



TAN

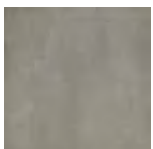
PRIMA MATERIA



CEMENTO



CENERE



SANDALO

PENNSYLVANIA BLUESTONE



FULL COLOR CLEFT PATTERN



TRUE BLUE THERMAL PATTERN

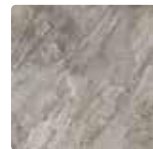
QUARTZITE



CLOUD



CRYSTAL WHITE

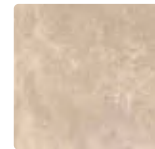


LAGUNA

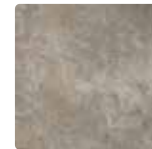


SANDY ISLAND

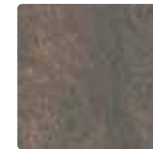
STONE



CREAMSTONE



MOONSTONE

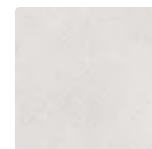


MULTICOLOR

TERRAZO



CHARCOAL



COOL GREY



COOL WHITE

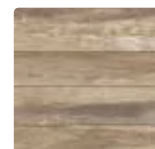


WHITE BLACK

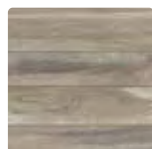


GREY BLACK

WOOD



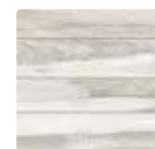
BROWN



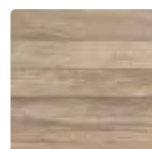
GREY



IPE



IVORY



TEAK

Not all sizes come in all color collections.
See an associate to confirm availability.

PERMEABLE PAVERS

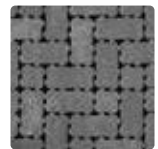
Designed to reduce storm water runoff on the site. Permeable pavers provide detention volume that can be fed into rain gardens and/or bio-swales. They're eco-friendly and environmentally smart. Additionally, many are engineered to allow for machine installation, providing lower labor rates and faster installation. Our extensive offering includes a variety of shapes, styles and colors to help you find the perfect option for your application.



HydraBric™ III was specifically designed for machine installation and to provide the sought after “brick” look. Palletized in a natural herringbone pattern and provided in a variety of colors that will complement any project.



(H) 3 1/8" x (D) 3 3/4" x (L) 8"



GRANITE

*HydraBric III is stocked in Granite.
Additional colors available as special order.*

PAVE DRAIN

The PaveDrain® system is a patented, permeable paving surface that provides installation ease and design flexibility for owners, engineers and contractors. The joints between the blocks are left open for an unprecedented infiltration rate (i.e. no rocks) and easy maintenance with conventional street vacuuming equipment. PaveDrain is ADA Compliant, HS-25 Load rated, comes in a standard grey color but available in other colors.



(H) 5.65" x (D) 12" x (L) 12"



GREY

OPEN GRID PAVERS

Whether you need an approved system for heavy vehicular loads or simply a system to accommodate foot or bicycle traffic, we have two perfect solutions, Checker Block™ and Turflock™.

PORCELAIN MONOCHROMATIC BASALT, ASH, BONE



TURFLOCK
(H) 3 $\frac{1}{8}$ " x (D) 15 $\frac{3}{4}$ " x (L) 23 $\frac{5}{8}$ "



CHECKER BLOCK
(H) 4" x (D) 24" x (L) 24"

CLAY PAVERS

Architects, Landscape Architects, Engineers and Builders specify clay pavers for high quality standards, color range that meet job demands and special matching requirements. With an extensive concrete paver portfolio, clay pavers further expands our offering making us your one-source provider.



Multiple shapes and colors are available with or without lugs to provide the aesthetics your project requires. Contact an associate for size and color options.

PAVERLOCK ELITE®

Enhance your projects with PaverLock Elite pavers, offering unmatched durability and sophisticated aesthetics. These pavers come in a variety of colors and sizes, allowing you to create stunning and versatile outdoor spaces. With superior interlocking technology, PaverLock Elite ensures long-lasting stability and easy installation, making it the ideal choice for high-end designs.



BOARDWALK ELITE PIKE PLACE

BOARDWALK ELITE (slate texture)



- 6 x 18
(H) 2 $\frac{3}{8}$ " x (D) 6" x (L) 18"
- 12 x 12
(H) 2 $\frac{3}{8}$ " x (D) 12" x (L) 12"
- 18 x 18
(H) 2 $\frac{3}{8}$ " x (D) 18" x (L) 18"
- 18 x 24
(H) 2 $\frac{3}{8}$ " x (D) 18" x (L) 24"

LEGACY ELITE (smooth texture)



- 8 x 8
(H) 2 $\frac{3}{8}$ " x (D) 8" x (L) 8"
- 8 x 16
(H) 2 $\frac{3}{8}$ " x (D) 8" x (L) 16"
- 16 x 16
(H) 2 $\frac{3}{8}$ " x (D) 16" x (L) 16"
- 16 x 24
(H) 2 $\frac{3}{8}$ " x (D) 16" x (L) 24"

PENDLETON ELITE (slate texture)



- SMALL SQUARE
(H) 2 $\frac{3}{8}$ " x (D) 9 $\frac{1}{2}$ " x (L) 9 $\frac{1}{2}$ "
- SMALL RECTANGLE
(H) 2 $\frac{3}{8}$ " x (D) 4 $\frac{3}{4}$ " x (L) 9 $\frac{1}{2}$ "
- LARGE RECTANGLE
(H) 2 $\frac{3}{8}$ " x (D) 9 $\frac{1}{2}$ " x (L) 14 $\frac{1}{4}$ "

CONCOURSE™ ELITE

(smooth texture)



6 x 6
(H) 2⅜" x (D) 6" x (L) 6"

6 x 12
(H) 2⅜" x (D) 6" x (L) 12"

12 x 12
(H) 2⅜" x (D) 12" x (L) 12"

All PaverLock Elite pavers available in these monotone and color blends. See an associate for stock options.

OXFORD ELITE

(smooth texture)



SQUARE
(H) 2⅜" x (D) 5½" x (L) 5½"

RECTANGLE
(H) 2⅜" x (D) 5½" x (L) 8¼"

HALFMARK ELITE

(smooth texture)



HALFMARK
(H) 2⅜" x (D) 4" x (L) 8"

COBBLE ELITE

(random surface texture)



COBBLE
(H) 2⅜" x (D) 2⅜" x (L) 7⅞"

MONOTONE



CHOCOLATE COAL HAZELNUT



IRON PEARL

BLENDS



BUCKHORN BURNT RED CRIMSON



MESQUITE MIDNIGHT SKY MISTY GREY



PIKE PLACE SANDSTONE SANDY OAK



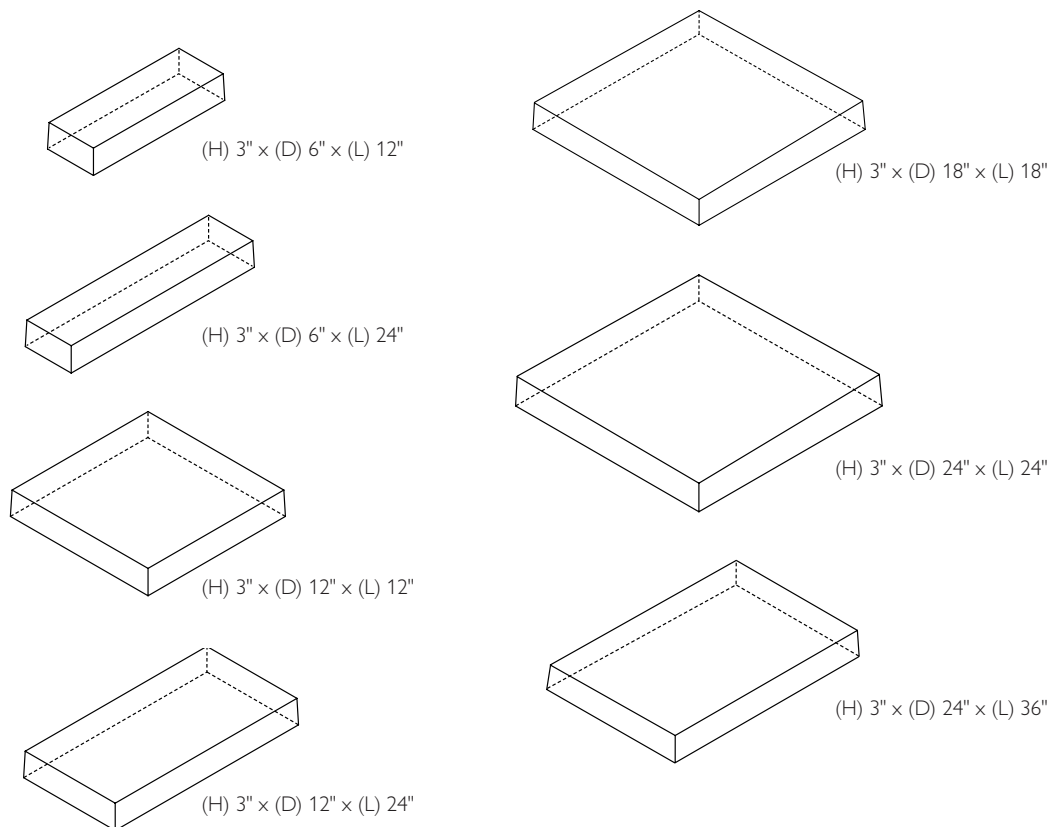
SEA SHELL

URBAN COLLECTION

Our collection of standard and customized site solutions allows for creative design achieving the exact look you envision.

- ♦ Pavers — plank, slab, unique design, ADA
- ♦ Site amenities such as pergola supports, entrance monuments
- ♦ Planters
- ♦ Benches
- ♦ Curbs
- ♦ Bollards
- ♦ Light Pole Plinth
- ♦ Stanchions
- ♦ Tree Monuments
- ♦ Catch Basins
- ♦ Barriers
- ♦ AC Pads
- ♦ Pull Boxes

STANDARD PAVER SIZES



Custom colors available, please see an associate for options.



ADA PAVERS

American Recovery + Reinvestment Act (ARRA) compliant

TECHNICAL DATA

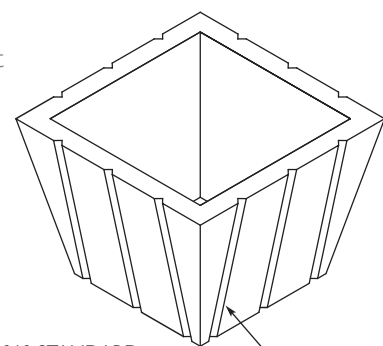
- ♦ All edges are chamfered
- ♦ Pavers meet ASTM C936
- ♦ Conforms to ASTM C140
- ♦ Conforms to ASTM C67
- ♦ Conforms to color pigments ASTM C979



(H) 2" x (D) 12" x (L) 12"

PLANTERS

Enhance the project site with concrete planters featuring sleek minimalist cubes, large tapered cylinders, or modern geometric shapes.



PL-010 STANDARD PLANTER

1" x 1/2" DEEP "V" GROOVE (3) PER FACE



PAVER PLANKS



PAVER SLABS & PLANKS



CUSTOM PAVERS & BENCHES



CUSTOM COLUMN



CUSTOM WALL



STEP TREADS



CUSTOM MONUMENT



CUSTOM CURBING



CUSTOM BOLLARD



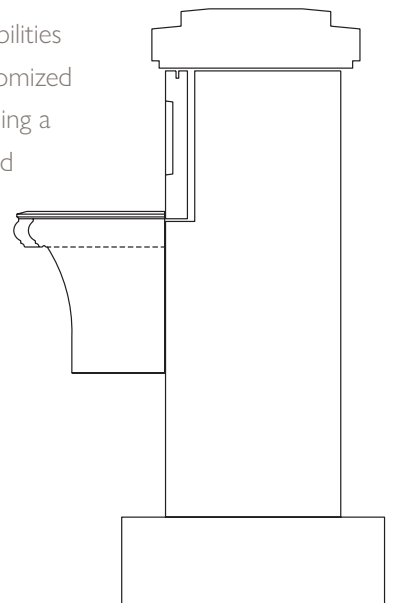
STANDARD CURB



CUSTOM BENCHES

CUSTOM BENCHES

Our manufacturing capabilities allow you to design customized concrete benches, choosing a variety of sizes, styles, and colors to create the perfect piece for the public space.



AB® COLLECTION

For more than 30 years, Allan Block's AB Collection has provided Design Professionals, Owners and Installers the perfect solution for retaining wall needs. Known for the ease of design and install, this collection brings a cut stone feel with the simplicity of a manufactured product to your project.





AB CLASSIC
(H) 7⁷/₈" x (D) 11¹/₈" x (L) 17⁵/₈"



AB JUMBO JR.
(H) 7⁷/₈" x (D) 9¹/₂" x (L) 8³/₁₆"



AB CLASSIC CORNER
(H) 7⁷/₈" x (D) 7¹/₁₆" x (L) 15⁵/₈"



AB LITE STONE
(H) 3¹/₁₆" x (D) 10¹/₂" x (L) 17⁵/₈"



AB CAP BLOCK
(H) 3⁵/₈" x (D) 11⁷/₈" x (L) 17⁵/₈"



AB JUNIOR LITE
(H) 3¹/₁₆" x (D) 9¹/₂" x (L) 8³/₄"



GRANITE*



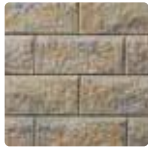
HICKORY BLEND*



MARbled BUFF



NATURAL



STONECREEK

*Granite + Hickory Blend available in all shapes. All other colors only available in AB Classic, AB Lite Stone, AB Classic Corner and AB Cap.
Colors may vary slightly from region to region based on manufacturing facilities.

Meets ASTM C1372



ALLAN BLOCK CLASSIC GRANITE



AB METROPOLITAN™ COLLECTION

Experience the same benefits and installation methods as our traditional Allan Block products. This collection offers a modern and contemporary style with an aesthetically pleasing smooth, chamfered face.



ALLAN BLOCK METROPOLITAN SLATE GREY



ALLAN BLOCK METROPOLITAN SLATE GREY (BOTTOM WALL)
AND CLASSIC NATURAL (TOP WALL)



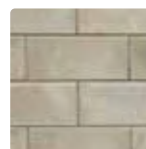
AB METRO CLASSIC
(H) 7 $\frac{7}{8}$ " x (D) 11 $\frac{1}{8}$ " x (L) 17 $\frac{5}{8}$ "



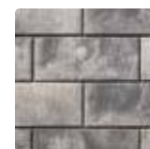
AB METRO CORNER
(H) 7 $\frac{7}{8}$ " x (D) 7 $\frac{13}{16}$ " x (L) 15 $\frac{5}{8}$ "



AB METRO CAP
(H) 3 $\frac{5}{8}$ " x (D) 11 $\frac{1}{8}$ " x (L) 17 $\frac{5}{8}$ "



BIRCHWOOD



SLATE GREY

Meets ASTM C1372



AB EUROPA®

Allan Block's Europa Collection brings the look and feel of weathered stone to the landscape. This collection adds European Old World charm to any retaining wall project.

ALLAN BLOCK EUROPA ASHLAR PATTERN IN STONECREEK



ALLAN BLOCK EUROPA CUSTOM COLOR



AB DOVER
(H) 7 $\frac{1}{8}$ " x (D) 10 $\frac{1}{2}$ " x (L) 17 $\frac{5}{8}$ "



AB EUROPA CAP
(H) 3 $\frac{1}{2}$ " x (D) 11 $\frac{1}{8}$ " x (L) 17 $\frac{5}{8}$ "



AB BORDEAUX
(H) 3 $\frac{1}{16}$ " x (D) 10 $\frac{1}{2}$ " x (L) 8 $\frac{1}{16}$ "



AB BARCELONA
(H) 3 $\frac{1}{16}$ " x (D) 10 $\frac{1}{2}$ " x (L) 17 $\frac{5}{8}$ "



AB EUROPA CORNER
(H) 7 $\frac{1}{8}$ " x (D) 7 $\frac{1}{4}$ " x (L) 15 $\frac{5}{8}$ "



AB PALERMO
(H) 7 $\frac{1}{8}$ " x (D) 9 $\frac{1}{2}$ " x (L) 8 $\frac{1}{16}$ "



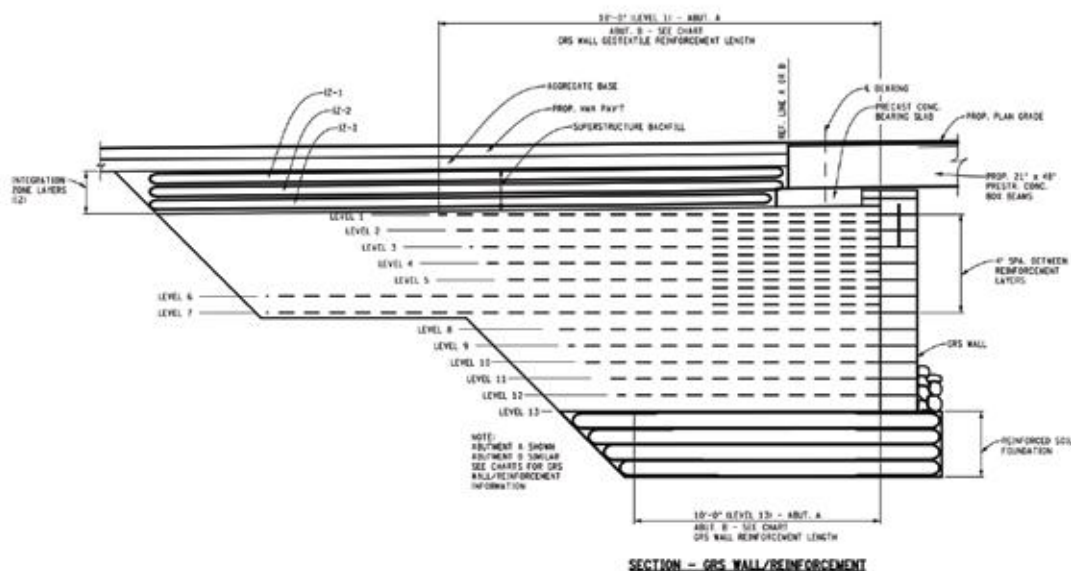
STONECREEK

Meets ASTM C1372



GRS/IBS

Need a quicker and more economical solution for a bridge repair and/or replacement? GRS/IBS (Geosynthetic Reinforced Soil-Integrated Bridge Structures) are proven to do both. Utilize one of our many retaining wall solutions to create stunning and structural bridge structures.







Recon Retaining Wall Systems are a high performance big block with the look, scale and durability of large natural stone boulders. Perfect for tight sites, this machine installed collection provides a perfect solution for challenging projects.



RECON NORTH SHORE GRANITE NATURAL



NORTH SHORE
GRANITE*



OLD WORLD



RUSTIC



WEATHERED EDGE



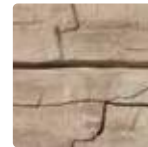
NORTH SHORE
GRANITE NATURAL*



RUSTIC
NATURAL



OLD WORLD
NATURAL



WEATHERED EDGE
WHEAT

Various sizes available and made to order for projects. See associate for lead times and details. Meets ASTM C1782.
*Stocked item.



RECON NORTH SHORE GRANITE NATURAL



RECON NORTH SHORE GRANITE NATURAL



RECON NORTH SHORE GRANITE NATURAL



RECON NORTH SHORE GRANITE NATURAL



RECON OLD WORLD NATURAL

ACCESSORIES

To complement the many great site solutions identified in this brochure, we round out our portfolio with necessary accessory items to ensure quality performance.



Strata Systems, Inc. is an industry leader in geosynthetic materials and provide some of the best geogrid found in the industry. Proper testing has been performed to support the products with our retaining wall solutions and combined with our products you can build retaining walls to an unlimited height.



Sleeve-It[®], a wonderful solution to help gain valuable land on your development. The cantilever system allows many fence or railing posts to be installed directly behind the wall to eliminate the concern of overturning.



Wall Drain Pro[®] helps expedite the installation while also providing a great aesthetic when venting necessary drain pipes from behind a retaining wall and when placed above grade.



MRP Pedestals are a contractors favorite due to the ease of installation. This pedestal system allows the installer to adjust and level the pedestal while the paver is resting on it. This patented system is a must for your raised paver application.



Speak with a Reading Rock associate to learn more about all these accessories and how they will benefit your project.

SINGLE SOURCE PROVIDER



ARCHITECTURAL MASONRY VENEER, BRICK, RETAINING WALL, PAVING SYSTEM

CASE STUDIES – *Your Challenge, Our Solution*



CINCINNATI ZOO & BOTANICAL GARDEN

APPLICATION

Expansion of the Western Lowland Gorilla habitat exhibit.

CHALLENGES

Space for expanding the exhibit was limited due to property lines adjacent to the Zoo and existing utilities inside the exhibit.

RESULTS

This cut wall application provided an excellent opportunity for a Recon big block gravity wall & allowed the exhibit to be expanded without acquiring additional real estate.



DEPAUW UNIVERSITY

APPLICATION

Multi Sports Stadium & practice fields for soccer, lacrosse, field hockey.

CHALLENGES

Grade changes required several retaining walls. Considerations – student pedestrian points & the highest level of aesthetics at affordable budget. Global stability was a concern – seven tiered terraced wall, select backfill, extended geogrid lengths. For extended geogrid lengths, since the stadium building was already in place, geogrid lengths could not be extended far enough for fear of undermining the building's foundation.

RESULTS

In-place concrete cut wall at the bottom of the toe of the retaining wall to intercept the slip arcs, allowing the site to remain stable.



ARCTIC SPRINGS

APPLICATION

Residential New Home Construction-Waterfront (Ohio River) 6500 sf up to 18' in height.

CHALLENGES

Timing installation against unseasonable river elevations and flooding, block has a zero degree batter (no setback), poor access (steep slope to the water).

RESULTS

Recon big block retaining wall units were installed; 240 tri-axle loads of stone back-fill were used along with grid spacing every two courses. Riprap was placed along the front base of the retaining wall to prevent undermining of the wall foundation.



POGUES RUN

APPLICATION

Concrete channel for flood control.

CHALLENGES

Potential water flow velocity at 15 cfs (cubic feet per second); Rapid draw down; Erosion and scour protection; site improvement.

RESULTS

Reinforced Allan Block walls designed for water application that addressed all the challenges and concerns while yielding a 30% cost savings over other material options.



KEYSTONE PARKWAY & MAIN STREET

APPLICATION

Cut wall to retain soil at exit ramp.

CHALLENGES

Property line and right-of-way restrictions; Fence replacement costs; Crest slopes; and, Existing utilities.

RESULTS

Big Block Gravity wall application providing a more cost effective solution, avoidance of nearly \$1.2 million.



BLUEGRASS-ASPENDALE

APPLICATION

Ten acres (187,000 sq. ft.) of the Bluegrass-Aspendale project required storage and management of the increased runoff from roofs, sidewalks, drives and parking areas. With no available land for storage, Sherman Carter Barnhart (SCB) investigated several pavement resurfacing options that included: asphalt, porous pavement and permeable pavers. The goal was to find an economical solution while meeting the needs of the site.

RESULTS

SCB was able to manage and store increased runoff when they incorporated permeable pavers into the project design. The water quality generated by the aggregate (reported by 3rd party testing) met or exceeded EPA requirements therefore, requiring no additional treatment devices. Bluegrass-Aspendale's permeable paver parking lots proved to be both an economical and environmental success; producing a cost avoidance of \$1M, and today, serving as a model for future projects. The parking lot has also generated excitement from surrounding universities, municipalities and business leaders as they, too, are interested in implementing socially responsible applications in their communities.

WARRANTY

Reading Rock, Inc. warrants its products to meet ASTM manufacturing guidelines and specifications provided the products have been installed, used, and maintained according to accepted ASTM standards and as recommended by the manufacturer. (For complete warranty information, please see the Reading Rock, Inc. Terms and Conditions of Sale at readingrock.com).

CERTIFIED CONTRACTORS

Get your project started today by contacting one or several of our recommended certified installing contractors and select the one that best fits the requirements of your project.



Contact an associate for a certified contractor near you.

ABOUT READING ROCK

Since 1947, Reading Rock has had a passion for manufacturing quality building material products and providing exceptional services. While our level of dedication began on a small scale as a block manufacturer, today Reading Rock is recognized for solutions and services including: hardscapes, tile, architectural stone, brick, thin veneer, CMU and hearth. From the plant floor to the job site, we are committed to enhancing our customer partnerships through quick product turnaround, on-time delivery and our resolute focus on continuous improvement. At Reading Rock, we never relent on ways to improve our processes to ensure we exceed expectations. With state-of-the-art technology, certified technicians, in-house LEED® APs and GAs and engineers, we're confident you'll experience the Reading Rock difference by receiving the right products, on time, every time.



Our purpose is to help support and finance the initiatives of the International Rett Syndrome Foundation. From donating over two million dollars in funding, every one of our customers and every associate is contributing to help those who can't help themselves. For more information on Rett syndrome and the devastating impact it has on families, please visit rettsyndrome.org.

International Rett Syndrome Foundation's mission is to accelerate full spectrum research to cure Rett syndrome and empower families with information, knowledge and connectivity.



4600 Devitt Drive, Cincinnati, OH 45246
800.482.6466 • www.readingrock.com