



**PACIFIC COAST**  
MARINE

ADVANTEC ADVANTAGE



**3 YEAR**  
HASSLE-FREE  
WARRANTY

WE ARE PASSIONATE ABOUT DELIVERING

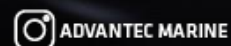
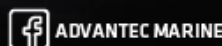
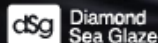
RELIABLE *SOLUTIONS*  
SUPERIOR *QUALITY*  
WORLD-CLASS *SUPPORT*

# PRODUCT CATALOG

TRUSTED TECHNOLOGY, TESTED AT SEA



Proudly part of the AdvanTec family of brands



[WWW.ADVANTECMARINE.COM](http://WWW.ADVANTECMARINE.COM)

ADVANTEC ADVANTAGE



**3 YEAR**  
HASSLE-FREE  
WARRANTY

WE ARE PASSIONATE ABOUT DELIVERING

RELIABLE **SOLUTIONS**  
SUPERIOR **QUALITY**  
WORLD-CLASS **SUPPORT**

# ABOUT US

TRUSTED TECHNOLOGY, TESTED AT SEA

## ABOUT PACIFIC COAST MARINE:

Pacific Coast Marine is one of the world's largest manufacturers and suppliers of high-quality yacht doors, windows, and hatches. PCM has nearly 30 years of experience with projects including superyachts, semi-custom yachts and production yachts.

We began building our reputation nearly 30 years ago by supplying high-quality yacht closures for use in the North Pacific Ocean. Today, our commitment to personalized service, regardless of the size and complexity of the project, sets us apart. In addition, PCM offers competitive pricing, innovative product designs, and high-quality yacht products. As a result, PCM has evolved to become the global leader in manufacturing and supplier of yacht closures.

## ABOUT ADVANTEC:

AdvanTec is a collaboration of brands that specializes in the design, engineering, and manufacturing of a wide variety of marine products. As one of the largest marine manufacturers in the world, with over 150 years of experience collectively from their brands, they have been one of the leaders in innovation and creative manufacturing systems.

We are committed to delivering solutions that meet our customer's requirements. We offer after-sales service and commissioning support for all products sold.

## All Non-Powered Equipment:

- Platinum Warranty - 36 months from date of shipment

## All Powered Equipment:

- Standard Warranty - 24 months from date of shipment
  - On-site commissioning required by AdvanTec Marine or certified technician for an additional 12-month extension

## PACIFIC COAST MARINE HAVE RECEIVED ACCEPTANCE:

- DNV - Det Norske Veritas
- LR - Lloyds Register of Shipping
- GL - Germanischer Lloyd
- BV - Bureau Veritas
- ABS - American Bureau of Shipping

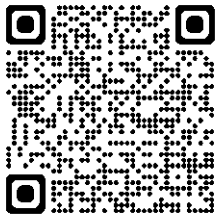


Scan for more information

# TABLE OF CONTENTS

<b>SLIDING DOORS</b>	<b>4</b>
SILL OPTIONS	5
WHISPER DRIVE	6
MODEL 1756/1750	8
MODEL 1736/1730	10
MODEL 1726/1720	14
MODEL 1716/1710	
<b>HINGED DOORS</b>	<b>16</b>
MODEL 1122	17
MODEL 1620/1520/1120	18
MODEL 1611/1511/1111	20
MODEL 1220	22
MODEL 1130/1430	24
<b>HATCHES</b>	<b>26</b>
3240	27
3450/3150	28
3430/3130	30
<b>COMPOSITE CLOSURES</b>	<b>32</b>
<b>SPECIAL FABRICATION</b>	<b>34</b>
<b>GLOSSARY</b>	<b>36</b>
<b>SERVICE &amp; SUPPORT</b>	<b>38</b>

# SLIDING DOORS



SCAN FOR MORE  
INFORMATION

# SILL OPTIONS

## POCKET DOOR

The Ultimate Yacht Opening: "Pocket Door" Discreet Vanishing Act



## FLUSH SILL

Indulge in a Seamless Interior-Exterior Experience with PCM's Flush Sill



## CONCEALED TRACK

Experience Sleek, Clutter-Free Boating with Conceal Track's Virtually Maintenance-Free Design



## EXPOSED 316L TRACK

Designed for straightforward installation





Overhead  
Sensor



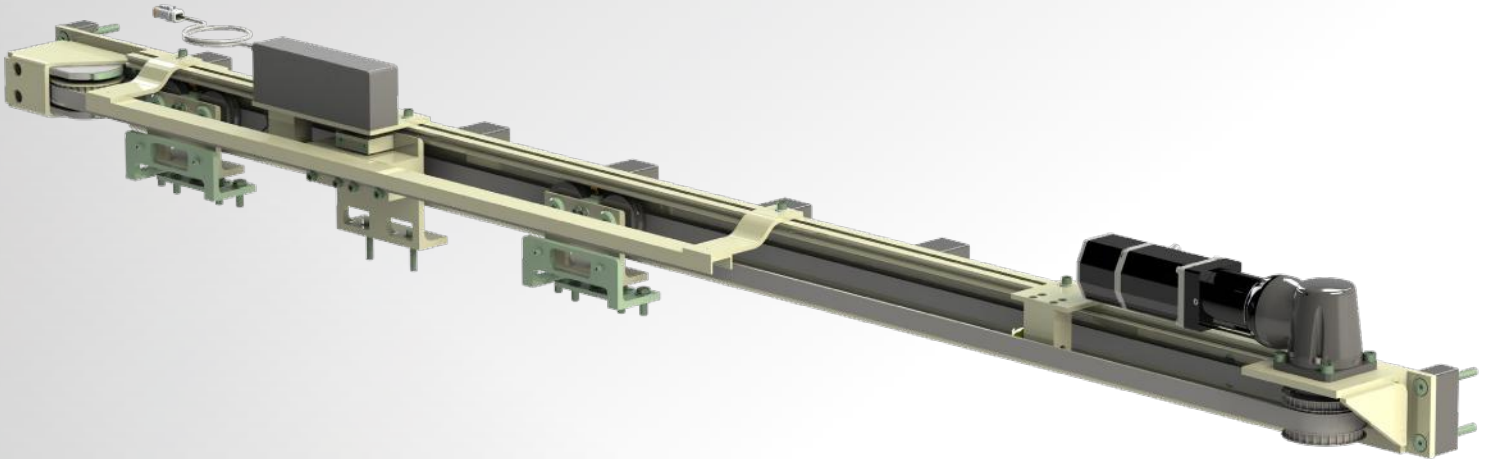
Touch  
Screen



Back-up  
Battery



Inflatable  
Gasket

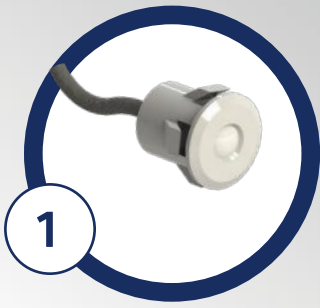


## WHISPER DRIVE

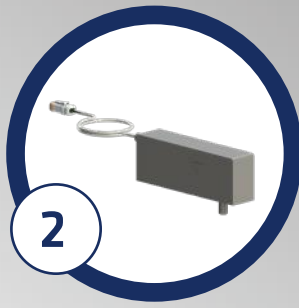
Whisper Drive System is specifically designed for single or multi-panel sliding doors. It offers a remarkably smooth function, ensuring seamless operation. Beyond functionality, this system boasts an elegant user interface that caters to even the most discerning tastes in modern yacht design. Whether you're navigating calm waters or braving rough seas, the Whisper Drive System delivers both performance and aesthetics.

- Touch Screen (4) Modes
  - Sea, Port, Full Open & Housekeeping
- Safety: Eye Beams & Pinch Sensors
- 500lb Per Panel Capabilities
- Secondary Security Pin Lock
- Auto Inflate & Deflate Gasket System
  - Requires Ship Supplied Air 5psi
- Class Accepted Back-Up Battery
  - Pre-Programmed "Fail-Safe"
- Hands Free Interior & Exterior:
  - Overhead Detection & Wave Sensors
- Remote Access: Bridge Monitoring & Door Mode Operation
- Programmed Door Speed (3)
  - Door Speed 1: 75mm per second
  - Door Speed 2: 150mm per second
  - Door Speed 3: 300mm per second

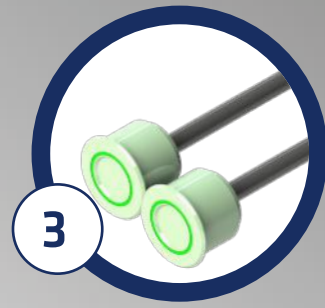
STANDARD



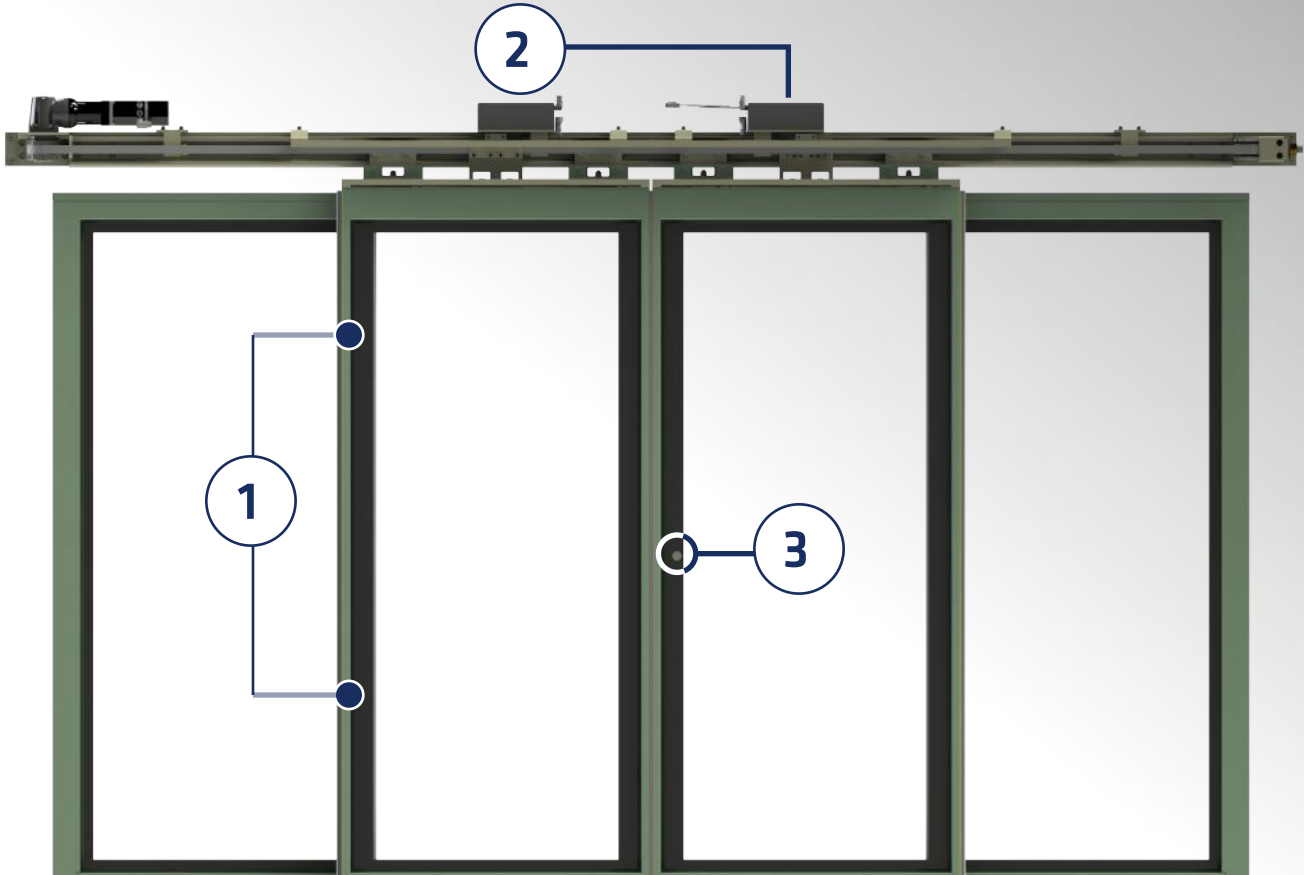
Eye Beams



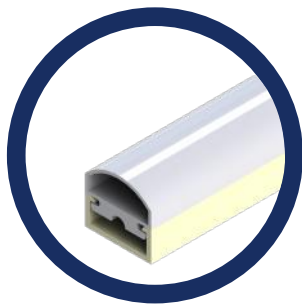
Pin Lock



Piezo



OPTIONAL



Pinch Sensor



Wave Sensor



Overhead Sensor

# 1756 & 1750 SERIES SLIDING DOORS

316L MIRROR POLISH

Our panel-style doors are designed to adapt seamlessly to various configurations. Whether you need a single, tandem, or bi-parting setup, our doors fit the bill. With concealed or flush sills, they're suitable for both flat and curved superstructures. Plus, you have the option of full or half-height glazing, allowing for abundant natural light and consistent sightlines. Choose from either euro full-width glazing or the elegant pencil edge design.



## Craftsmanship Beyond Compare

316L Mirror polished stainless steel construction to their thoughtful features, these doors are a testament to nautical sophistication.

## Weathertight Sealing

**Inflatable Gasket Technology:** When the elements rage, these doors stand firm. The inflatable gasket ensures a weathertight seal, keeping wind, rain, and spray at bay.

## Whisper Drive

Imagine sliding the door open with a gentle push of a button—no noise, no effort or better yet, walk in with ease as the door opens automatically.



## 1756 SERIES

*Panoramic Views:  
Full Width Opening, Guests Can Enjoy Panoramic Views  
whether they're in the salon.*



## 1750 SERIES

*Seamless Transition:  
When the door is open, it seamlessly connects the interior and exterior  
spaces, enhancing the overall flow and functionality.*



### STANDARD FEATURES

- Active Panel Options
  - Single (1750) or Multi-Panel (1756)
- 316L Material
- Mirror Polish #8
- Concealed or Flush Sill Frames
- Whisper Drive System
- Pneumatic Seal – Includes Control Module
- Users Operation Manual

### UPGRADED FEATURES

- Wave Sensors – Adjustable Distance
- Overhead Sensors – Infrared
- Fixed Side Lights
- Specialized Glazing



## **1736 & 1730** **SERIES SLIDING DOORS** ALUMINUM

These elegant sliding doors combine form and function. Crafted with meticulous attention to detail, they offer a blend of style and durability that sets them apart from lighter-duty alternatives. Whether you're navigating stormy seas or docked in a tranquil harbor, Pacific Coast Marine's sliding doors deliver both performance and style. They're not just doors; they're a statement of quality and craftsmanship.

STANDARD FEATURES

- Active Panel Options
  - Single (1730) or Multi-Panel (1736)
- Concealed or Flush Sill Frames
- Whisper Drive System
- Pneumatic Seal – Includes Control Module
- Users Operation Manual
- Yacht Quality Finish:
  - Awlcraft 2000 Acrylic Finish – Single Tone
  - Awlcraft 2000 Acrylic Finish – Two Tone

UPGRADED FEATURES

- Wave Sensors – Adjustable Distance
- Overhead Sensors – Infrared
- Fixed Side Lights



# 1726 & 1720

## SERIES SLIDING DOORS

DUAL AXIS ALUMINUM

Unlock a new level of performance and style with PCM's Dual-Axis sliding doors. These aren't your ordinary marine doors – they're a symphony of engineering and aesthetics, designed to withstand the elements while enhancing your vessel's allure.

### STANDARD FEATURES

- 316L Stainless-Steel Top & Bottom Track
- Noise Isolating Urethane Rollers
- Manually Operated: Single Lever Actuated Creates a Weather tight Full Perimeter Seal
- Hold Open Feature: Any Position
- TrioVing Polished Hardware
- DiamondFrit Directbonded Glass
- Yacht Quality Finish:
  - Awlcraft 2000 Acrylic Finish – Single Tone
  - Awlcraft 2000 Acrylic Finish – Two Tone

### UPGRADED FEATURES

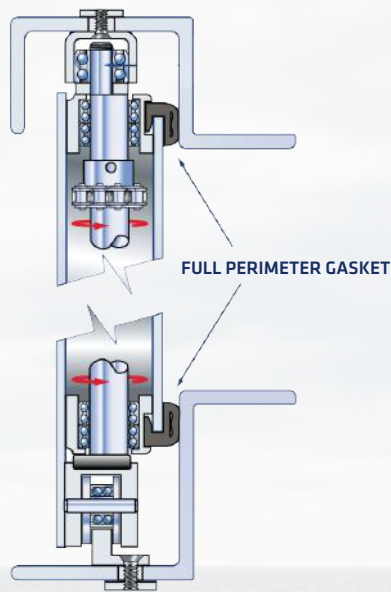
- **Bi-Parting Doors: Counterpull System**
- **Automatic Operation System: FMDS System**
- **Sidelights: Single, Double or Custom**
- **Security: Keyless Locking**
- **Bridge: Remote Monitoring Sensor**
- **Interior Veneer Preparations**



## SINGLE LEVER SEALING

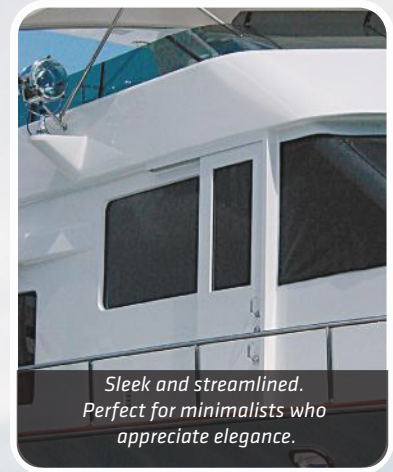
Single lever actuated mechanism creates a weather tight, full perimeter, positive gasket seal when the door is fully closed and “cammed-in.” Ideal for both exterior and interior applications, camming ability also acts as a hold open feature to secure the door panel in a stationary position at any point along its track.

USA Patent #5,542,213



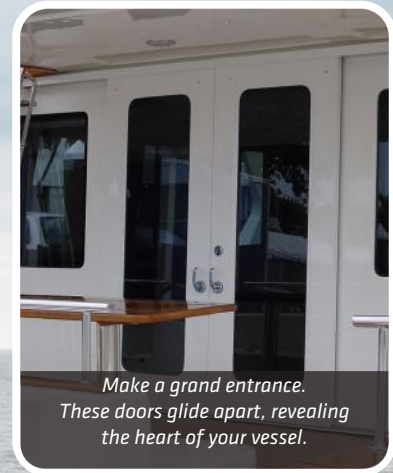
DOOR IN SEALED POSITION

## 1720 Series Single Panel



*Sleek and streamlined.  
Perfect for minimalists who  
appreciate elegance.*

## 1726 Series Bi-Parting



*Make a grand entrance.  
These doors glide apart, revealing  
the heart of your vessel.*

# 1716 & 1710

## SERIES SLIDING DOORS

SINGLE-AXIS ALUMINUM

Get ready to embark on a voyage of style and functionality with PCM's Single-Axis sliding doors. These aren't your run-of-the-mill marine doors – they're the epitome of craftsmanship, designed to elevate your vessel in every way.

### STANDARD FEATURES

- Manually Operated
- TrioVing Polished Chrome Lockset
- Manual 316L Drop-Bolt Hold-Open
- DiamondFrit Directbonded Glass
- Yacht Quality Finish:
  - Awlcraft 2000 Acrylic Finish – Single Tone
  - Awlcraft 2000 Acrylic Finish – Two Tone

### UPGRADED FEATURES

- **Bi-Parting Doors: Counterpull System**
- **Automatic Operation System: FMDS System**
- **Sidelights: Single, Double or Custom**
- **Security: Keyless Locking**
- **Bridge: Remote Monitoring Sensor**





## FMDS AUTOMATIC DOOR SYSTEM

### STANDARD COMPONENTS

- Vandal proof Piezo, lighted bezel.
- 115VAC or 230VAC
- Plug and Play Cabling
- 4 position mode switch
  - Off
  - AUTO (2 Way)/ Normal
  - Exit (1-way)
  - Hold Open

### OPTIONAL COMPONENTS

- Safety**
  - UPS Battery Back-up
  - Photoelectric safety beams
  - Edge Sensors
- Activation**
  - Over Head Radar
  - Touchless Hand Wave
  - Security Keypad
  - Inflatable Gasket



Electric Motor

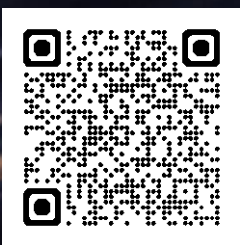


Sealed Piezo Buttons



Touch Screen

# HINGED DOORS



SCAN FOR MORE  
INFORMATION



# 1220

## HINGED WATERTIGHT DOOR

Innovative design solutions define PCM watertight doors. Proven to deliver the highest value through unparalleled quality, durability and long-life cycle, our watertight PCM is certain to have a solution to any design requirement doors set the industry standard.

Manufactured from marine-grade aluminum, steel and stainless steel.

### STANDARD FEATURES

- Class Type Approved
- Yacht Quality Finish:
  - Awlcraft 2000 Acrylic Finish – Single Tone
  - Awlcraft 2000 Acrylic Finish – Two Tone
- Surface Hinge
- Concealed 316L Roller Dogs
- Interior Cover Panel
- Black Neoprene Gasket
- Exterior & Interior Polished 316L 15" Wheel

### UPGRADED FEATURES

- Pantograph or Concealed C-Hinges
- Gear Reduction
- Bridge Monitoring Sensor
- Recessed Flush Panel Operation Handle
- Curved or Designed for Customer Facade





# 1430 & 1130 HINGED WATERTIGHT DOORS

ELEGANCE IN MOTION

Are you seeking the pinnacle of marine craftsmanship? Look no further than the Pacific Coast Marine 1430 and 1130 Premium Duty panel doors. These doors aren't just functional; they're a statement of elegance and reliability.

## Uncompromising Construction

Thick panel skins, extra internal reinforcements, and all-welded construction create a seamless, quick acting or individually dogged door that exudes quality. No exposed seams mean a clean, sleek appearance that will turn heads on any vessel.

## Customization and Beauty

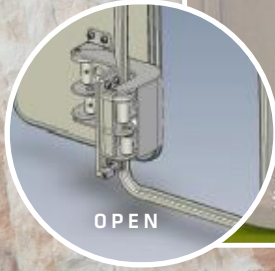
Want your yacht to stand out? Specify optional yacht-quality paint to match your color preferences. A smooth, long-lasting beauty that complements your vessel's aesthetics. Welded-in windows add a touch of sophistication, allowing natural light to flood your interior spaces.

## Versatility

Transoms, engine room, below-deck compartments, or main decks watertight spaces, these doors fit seamlessly into any marine application. Complex curvature? No problem! Premium panel doors can accommodate your unique requirements.



1430 DOOR



PANTOGRAPH



YOKE HINGE



HARDWARE



SEMI-FLUSH  
DOME HANDLE

### Watertight Seal Perfection

The knife-edge seal with robust vulcanized silicone gasket, and floating hinges ensure a watertight seal when properly adjusted and dogged closed.

# 1122

## WEATHERTIGHT HINGED DOORS

Where Form Meets Function, step into a world of nautical elegance with the Pacific Coast Marine 1122 Weathertight Door. Crafted for discerning mariners, this door seamlessly blends practicality with aesthetics. Seal the deal – and step through elegance.

### **Quick-Seal Lever Latch System**

A single lever that is designed for not only the daily usage but also provides quick-acting feature to secure and seal the door in weathertight position. Its sleek performance with elegant precision – a mariner’s dream.

### **High-Quality Weathertight Closures**

Ordinary closures won’t cut it. PCM raises the bar. Imagine doors that defy the elements – wind, spray, and saltwater. Their sleek design seamlessly blends into the yacht’s aesthetics, combining functionality with elegance.

### **Design Excellence Raised Interior Perimeter Edge:**

It’s not just a door; it’s a masterpiece. The raised edge contacts the coaming mount gasket, creating an impermeable seal. Raindrops bounce off, and sea spray retreats. Your interior stays dry, cozy, and luxurious.

### **Veneer-Friendly Recessed Interior Panel:**

PCM understands customization. The recessed interior panel invites veneering – match it to your custom interior. Whether it’s rich wood, sleek metal, or minimalist chic, your door becomes an extension of your style.



## Various Hinging

**Sleek Surface Hinging:** These hinges are all about minimalism. They blend seamlessly with the door's surface, creating a clean, unobtrusive look. Picture a door that opens effortlessly, without drawing attention to the hardware. That's sleek surface hinging.

**316L Recessed "Concealed" Hinges:** When durability meets elegance, you get 316L stainless steel. Concealed hinges vanish from sight when the door is closed. No protruding pins or knuckles – just a flawless surface. Whether it's a hidden escape hatch or a cabin door, these hinges keep secrets well-guarded.

**Pantograph Hinges:** Imagine a door that dances. Pantograph hinges allow the door to swing both inward and outward. They're

*1122 Weathertight Door  
Not just a door, but a canvas for innovation.*

# 1620, 1520 & 1120

## WEATHERTIGHT HINGED DOORS

HEAVY DUTY DOORS

Our heavy-duty doors combine rugged durability with yacht-worthy style. Marine grade thick panel skins, with all-welded construction, and a sleek yacht finishes. These doors aren't just tough; they're also customizable with flush weld-in windows, polished or painted hardware available in single, French or Dutch panel designs.

Rest assured, these doors are approved by class agencies, and you'll have peace of mind with our 3-year hassle-free warranty. Explore the full range in our catalog!

### STANDARD FEATURES

- DiamondFrit Directbond Flush Glazing
- Polished Chrome TrioVing Lockset
- Black Neoprene 35 Durometer
- Painted Aluminum Individual Dogs
- 316L Polished Butt Hinges
- Yacht Quality Finish:
  - Awlcraft 2000 Acrylic Finish – Single Tone
  - Awlcraft 2000 Acrylic Finish – Two Tone

### UPGRADED FEATURES

- Keyless Entry
- Polished Schwepper Euro Lockset
- Polished Aluminum Individual Dogs
- Polished 316L Yacht Quality Door Closer

**1620  
FRENCH DOOR**



**1520  
DUTCH DOOR**



**1120  
SINGLE DOOR**





## **1611, 1511, & 1111 SERIES HINGED DOORS**

Strength Meets Style: Crafted with the same high-strength integrity as commercial boat doors, the 1111 Series isn't your run-of-the-mill entrance. These marine marvels combine rugged durability with sleek aesthetics, making them essential for any vessel.



**1611  
FRENCH DOOR**

*Embrace the Sunshine:  
Open Those Doors Wide*



**1511  
DUTCH DOOR**

*Dutch Style Pilothouse Door:  
Functionality with Classic Look!*



**1111  
SINGLE DOOR**

*Ventilated Weathertight  
Single Panel Locker Door*



**STANDARD FEATURES**

- DiamondFrit Directbond Flush Glazing
- Polished Chrome TrioVing Lockset
- Black Neoprene 35 Durometer
- Painted Aluminum Individual Dogs
- 316L Polished Butt Hinges
- Yacht Quality Finish:
  - Awlcraft 2000 Acrylic Finish – Single Tone
  - Awlcraft 2000 Acrylic Finish – Two Tone

**UPGRADED FEATURES**

- Keyless Entry
- Polished Schwepper Euro Lockset
- Polished Aluminum Individual Dogs
- Polished 316L Yacht Quality Door Closer

# HATCHES



SCAN FOR MORE  
INFORMATION

# 3240 WATERTIGHT HATCH

Are you in need of a reliable and robust watertight hatch for your marine vessel? Look no further! The Pacific Coast Marine 3240 Watertight Hatch is your ultimate solution.

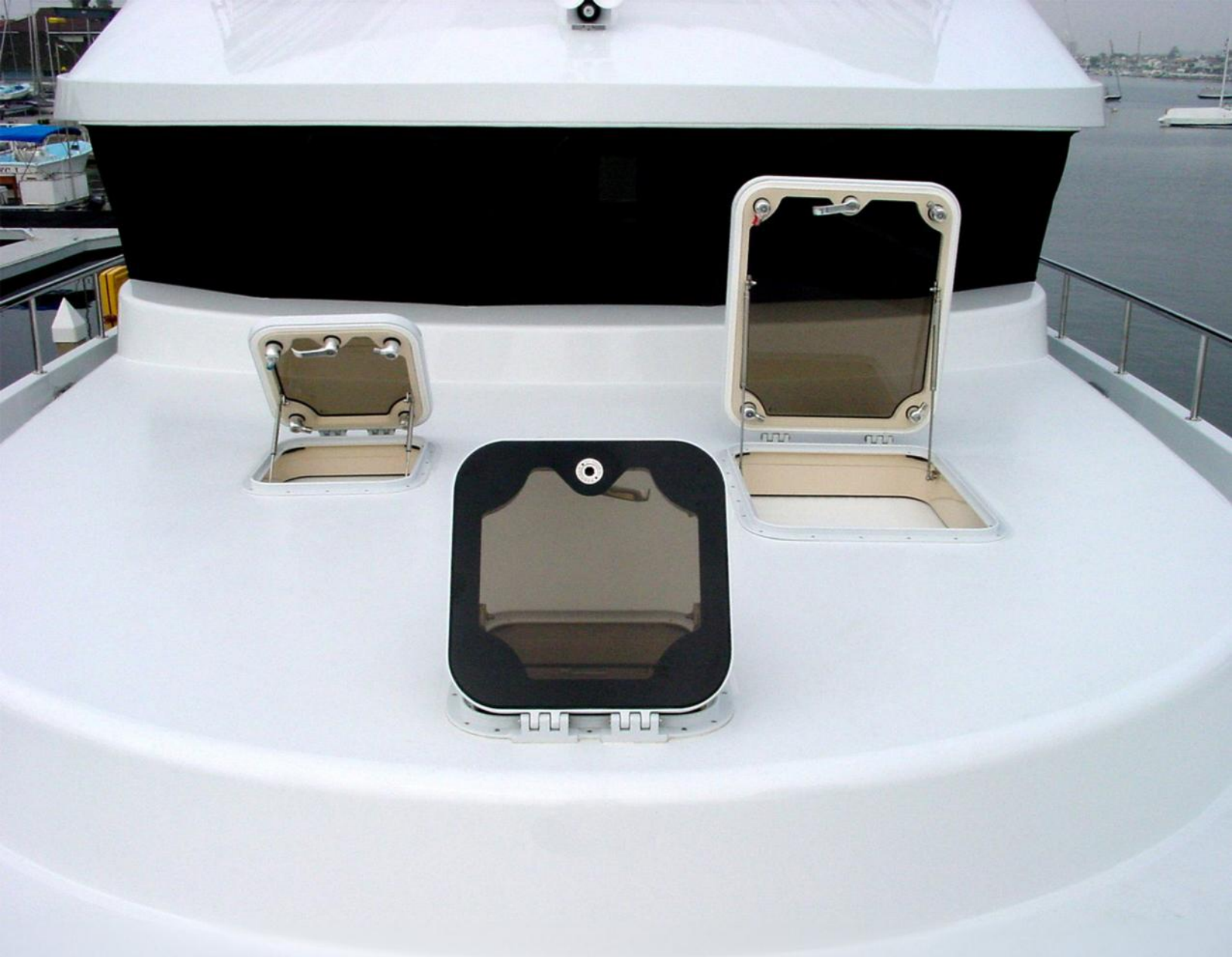
## STANDARD FEATURES

- Class Type Approved Design
- Aluminum, Stainless or Steel Construction
- Concealed Articulating Hinges
- 316L Gas Struts
- Quick Acting Concealed Dogs
- Yacht Quality Finish:
  - Awlcraft 2000 Acrylic Finish – Single Tone
  - Awlcraft 2000 Acrylic Finish – Two Tone

## UPGRADED FEATURES

- Bridge Monitor Sensor
- Electric Actuation
- Teak Ready
- Custom "C Type Hinge





## **3450 & 3150 WATERTIGHT LENS HATCHES**

Our 3450 & 3150 Lens Hatches boast chain drive quick acting or individually dogged that combines rugged reliability with a touch of finesse. Whether you're out at sea or simply charting your course. Our standardized and custom-sized models fit seamlessly. We also offer the option for camber and sheer to match the curvature of your deck.



**STANDARD FEATURES**

- Marine Grade Aluminum Construction
- Flush Deck or Raised Coaming
- 1/2" Thick DiamondLam Glazing
- Quick Acting (3450) or Individually Dogged (3150)
- Painted Hardware
- 316L Stainless Steel Struts
- Yacht Quality Finish:
  - Awlcraft 2000 Acrylic Finish - Single Tone
  - Awlcraft 2000 Acrylic Finish - Two Tone

**UPGRADED FEATURES**

- Bridge Monitor Sensor
- Teak Ready
- Polished Hardware
- Custom Shapes



## **3430 & 3130 WATERTIGHT HATCH**

Pacific Coast Marine's 3430 and 3130 Watertight Deck Hatches are designed for superior durability and reliability in marine environments. These hatches ensure a watertight seal, providing maximum protection against water ingress.



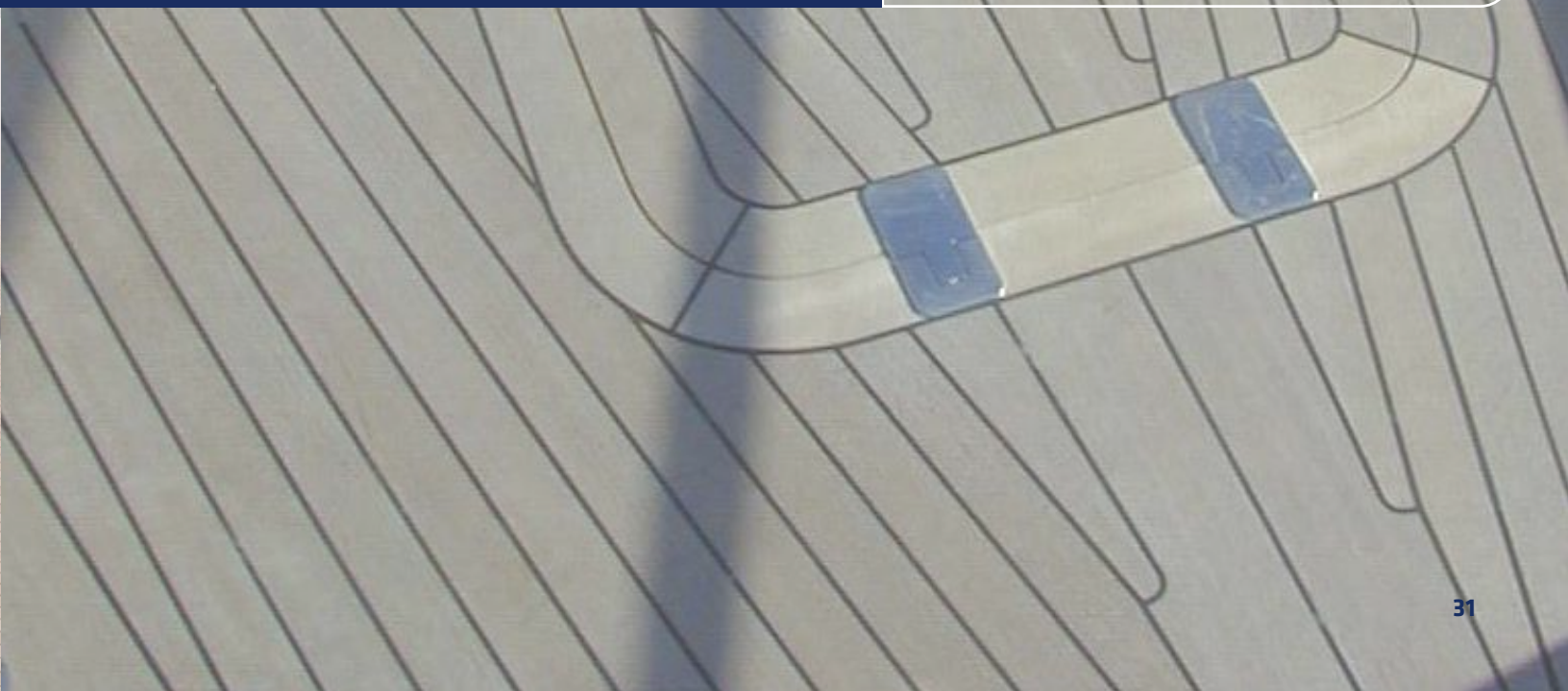


**STANDARD FEATURES**

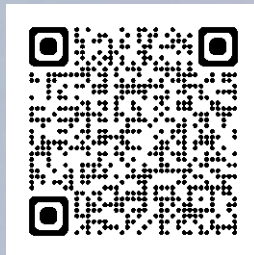
- Marine Grade Aluminum Construction
- Flush Deck with Deep Gutter Coaming
- Quick Acting (3430) or Individually Dogged (3130)
- Painted Hardware
- Flush Deck Polished Hinges
- 316L Stainless Steel Struts
- Yacht Quality Finish:
  - Awlcraft 2000 Acrylic Finish – Single Tone
  - Awlcraft 2000 Acrylic Finish – Two Tone

**UPGRADED FEATURES**

- Bridge Monitor Sensor
- Teak Ready
- Polished Hardware
- Concealed Articulating or Yoke Hinging
- Custom Shapes



# COMPOSITE CLOSURES



SCAN FOR MORE  
INFORMATION



## Carbon Fiber

**Material:** Carbon fiber

**Weight Advantage:** Approximately one-third the weight of comparable aluminum products.

**Strength:** Up to eight times stronger than aluminum.

**Corrosion Resistance:** Excellent resistance to corrosion.

**Applications:** Ideal for marine doors and hatches where weight reduction and strength are critical.

**Customizable Sizes:** Available in various sizes to suit different vessel requirements.

## Fiber-Reinforced Polymer (FRP)

**Material:** Fiber-Reinforced Polymer (FRP)

**Weight Advantage:** Offers increased performance over aluminum.

**Corrosion Resistance:** Excellent resistance to corrosion, making it suitable for marine environments.

**Weathertight and Watertight:** Designed to withstand harsh weather conditions and prevent water ingress.

**Extra Features and Finish Options:** Customize your closures with additional features and finishes.

**Applications:** Suitable for marine doors and hatches on decks, bulkheads, and other exterior openings.

## Why Choose Pacific Coast Marine Composites?

### Safety:

Enhanced safety through reliable closures.

### Corrosion Protection:

Resistant to saltwater and harsh marine conditions.

### Weight Savings:

Lightweight materials improve vessel efficiency.

### Durability:

Longer lifespan with reduced maintenance costs.

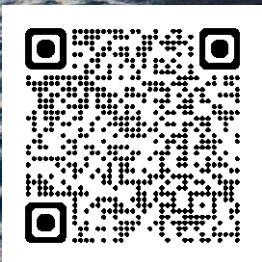
### Customization:

Tailor-made sizes and finishes available.



# SPECIAL FABRICATION

*WHERE THE EXTRAORDINARY TAKES SHAPE*



SCAN FOR MORE  
INFORMATION



## Shell Doors

Engineered for marine applications, our robust shell closures provide secure access to transoms, anchor platforms, and loading/unloading areas. Crafted to withstand harsh marine environments, these closures ensure safety, durability, and peace of mind.



## Hydraulic Closures

Designed for doors and hatches, our hydraulic closures provide unmatched reliability and ease of operation. Designed to withstand the toughest marine conditions, these closures ensure watertight integrity and smooth functionality.



## Special Fabrication

Our in-house design and engineering team combines 3D modeling and finite element analysis (FEA) to create tailored solutions for unique marine applications. From concept to reality, we ensure precision, durability, and customization.



## Concertina Doors

Marine grade weathertight folding doors offer versatility and durability for marine applications. These doors are easy to operate, allowing you to divide or open up spaces intuitively.

# ADVANTEC MARINE DEFINITIONS

## DOORS/HATCHES

### OVERALL SIZE MEASUREMENT (OSM)

Outside measurement of frame width & height.

### ROUGH OPENING

Opening in bulkhead, often referred to as “plate-cut”

### SPIGOT

Section of frame that protrudes through rough opening.

### CLEAR OPENING

Is the opening that you can physically pass through when the door/hatch is in full open position.

### INDIVIDUAL DOG SET (S)

Individually operated dogs (cleats) used to secure door/hatch for weathertight & watertight application.

Variations of Interior & Exterior options available.

### QUICK-ACTING DOG (S)

Lever or wheel used to operate multiple dogs with a single operation.

### BLIND DOG (S)

Interior operated only, can be individually operated dog or quick-acting.

### DOOR/HATCH FRAME

Main frame installed into bulkhead that the door/hatch insert will be fitted to & seal to.

### DOOR/HATCH INSERT

Door/hatch panel mounted to the frame via hinges or can be supplied as lift-out.

### BOLT-IN

Door/hatch main frame is installed and secured to bulkhead via mechanical fasteners.

### WELD-IN

Door/hatch main frame is installed and secured to bulkhead via welding method.

### CLAMP-IN

Door/hatch main frame is installed and secured to bulkhead via interior clamp ring.

### DOOR HANDING

Hinge doors refer to direction of the door swing when viewed from outside looking at key cylinder side.

Insert swings outward, Left-hand (LH) hinge on left or right-hand (RH) hinge on right.

Sliding doors refer to direction of slide (again viewed from exterior), left-hand sliding (LHS), door slides left or right-hand sliding (RHS), door slides right.

### LOCKSET

Lockset assembly includes - lever handles, lock case, keyed exterior cylinder, interior thumb-turn & supplied with roses or escutcheons plate.

Available in satin or chrome polished.

### DEADBOLT ONLY (NON-LATCHING)

Includes - lock case, keyed exterior cylinder, interior thumb-turn & round roses or rectangular escutcheons plates.

Available finishes are satin or polished chrome.

### PASSAGE SET

Includes - lever handles, passage lock case & round roses or rectangular escutcheons plates.

Available finishes are satin or polished chrome.

### WEATHERTIGHT

Designed to withstand and prevent the ingress of water exterior. Typically used above the waterline.

### WATERTIGHT

Will withstand water to a defined head pressure from exterior seating &/or both exterior seating & interior unseating pressures. Typically used below the waterline locations such as engine rooms, watertight boundaries & transoms.

# ADVANTEC MARINE DEFINITIONS

## FINISHES

### **ANODIZED - TYPE I (STANDARD)**

Chromic Acid anodizing is a metal coating process used when the application calls for a thin coating and a high level of corrosion resistance. MIL-A-8625F type I

### **ANODIZED - TYPE II (HARDCOAT)**

Proven electrochemical process that transforms a plain metal surface into an engaging exterior that provides both advanced corrosion-resistance and durability. MIL-A-8625 Type II

### **MILL FINISH**

Mill finish is the as extruded appearance of aluminum, no external mechanical or chemical finishing to the surface of the metal.

### **BUFFED FINISH**

Buffed with an orbital sander, no chemical finishing to the surface of the metal.

### **POWDER-COAT**

Electrostatically charged colored powder that is applied to the metal and then baked on to provide a protective hard wearing coating.

### **PREMIUM YACHT COATINGS**

Wet paint system in a wide range of colors and brands.

## GLASS

### **ANNEALED GLASS**

Sheet/plate glass, often called "float glass" that has not been heat-strengthened or tempered.

### **HEAT TREATED**

Like tempering, with a slower cooling process. Heat-strengthened glass is approximately twice as strong as annealed glass but breaks into shards.

### **TEMPERED**

Heat treated safety glass, breaks into small 1/8" crumbles.

### **CHEMICALLY TOUGHENED**

Chemically treated plate glass which is agitated to remove all imperfection in glass surfaces meeting or exceeding strengths of tempered glass.

### **LAMINATED**

Two or more pieces of glass bonded together using an .030 or .060 inner layer of polyvinyl butyral (PVB) or ethylene-vinyl acetate (EVA).

Considered to be safety glass due to strength of bonded panel and the fact the panes remain stuck together even after damage. Insulation properties & sound attenuation properties are much greater than standard tempered glass and can reduce UV transmission along with adding tints.

### **HEATED**

Tempered laminated glass with a built-in electrical element to create heat transfer across the glass to eliminate fogging or icing.

### **INSULATED GLASS UNIT (IGU)**

2 or more panes of heat reflective glass separated by an air gap using a desiccant spacer to reduce heat and noise transfer.

### **ARRIS GROUND (ROUGH ARRIS)**

Is achieved using a wet belt sander and removes the sharpness of the glass edges. Primarily applied to ensure the glass is safe to handle.

### **FLAT GRIND**

CNC machine removes all sharp edges and leaving a diamond smooth unpolished edge with a satin, white appearance.

### **FLAT POLISH**

After flat grinding an additional process is completed on our CNC machine.

All edges are polished producing a smooth, gloss finish similar to the glass surface, utilised on glass products where edges are exposed.

### **VLT - VISIBLE LIGHT TRANSMISSION**

Used when discussing tint, VLT is the percentage of the light that passes through glass. The higher the number the more light is passing through and vice versa. Example: VLT 9% gray, will have a dark gray tint only allowing 9% visible light transmission.

# SERVICE & SUPPORT

AT ADVANTEC MARINE, WE SUPPORT WHAT WE SELL!

We're more than a manufacturer of innovative marine products. We offer a range of technical support services for our products post-purchase. See below for some of our service offerings.

## MAINTENANCE & REPAIRS:

- Davits/Cranes
- Doors - Automatic & Manual Doors
- Windows & Glass
- Hatches
- On-site Diagnostics
- Machine Shop Services

## INSPECTIONS & CONSULTING:

- OEM Inspections
- Installation Support & Oversight
- Weather & Watertight Testing
- Product Commissioning & Testing
- \*Extended Warranty Qualification
- 24/7 Remote Technical Support



SCAN FOR  
SERVICE &  
SUPPORT

# ***TRUSTED TECHNOLOGY, TESTED AT SEA***



ADVANTEC ADVANTAGE



**3 YEAR**  
HASSLE-FREE  
WARRANTY

WE ARE PASSIONATE ABOUT DELIVERING

RELIABLE *SOLUTIONS*  
SUPERIOR *QUALITY*  
WORLD-CLASS *SUPPORT*



Proudly part of the **AdvanTec** family of brands



Advantec Manufacturing Canada  
43676 Progress Way, Chilliwack, BC,  
V2R 0C3, Canada

Phone: 1.800.770.0455  
Email: [info@advantecmarine.com](mailto:info@advantecmarine.com)

Advantec Manufacturing USA  
28336 Hunter Creek Rd., Gold Beach,  
OR, 97444, USA