

ISSUE 08 - Q4/24

kwkicc
LUXURY LIVING, REDEFINED.

Powered by **kw MALAYSIA**
KELLERWILLIAMS

PROPESTATES.COM

REAL ESTATE MAGAZINE

**Malaysia My Second Home (MM2H) Programme:
Your Gateway to a New Life in Malaysia.**

**Discover Kuala Lumpur's
Premier Luxury Residences
and Corporate Suites at
PAVILION SQUARE**



Editor-in-Chief & Publisher
FRANCIS NGOOI

TABLE OF CONTENTS

03

EDITOR'S LETTER

04

**DISCOVER MALAYSIA:
YOUR GATEWAY TO A SECOND
HOME**

05

**MALAYSIA MY SECOND HOME
(MM2H) PROGRAMME:
YOUR GATEWAY TO A NEW LIFE IN
MALAYSIA**

09

**DISCOVER KUALA LUMPUR'S PREMIER
LUXURY RESIDENCES & CORPORATE
SUITES AT "PAVILION SQUARE"**

14

**WYNDHAM SUITES KLCC - A PREMIER
INVESTMENT OPPORTUNITY**



18

**MITSUI SERVICED SUITES - A PREMIER
RENTAL APARTMENTS AT KUALA
LUMPUR'S GOLDEN TRIANGLE**

22

**REAPFIELD PROPERTIES TURNS 40 -
CELEBRATING 40 YEARS OF
EXCELLENCE | MS. CHAN AI CHENG
AWARDED "ESTATE AGENT OF THE
YEAR - 2024" BY BOVAEP**

26

**BECOMING A MILLION DOLLAR
REALTOR (BMR) WITH REAL ESTATE
EXPERT, COLIN TAN**

29

SUMMARY & REVIEW (POP-UP)



A Production by KWKLCC (PROPESTATES.COM),
Editor-in-Chief & Publisher: FRANCIS NGOOI

EDITOR'S LETTER



Dear Distinguished Readers,

Welcome to this exciting new edition of our magazine, where we bring you the latest insights and opportunities in Malaysia's thriving real estate market. This issue is particularly special as we are introducing a newly featured Interactive Digital Experience. With engaging content that's more dynamic than ever, you'll find our pages come alive with videos, immersive visuals, and interactive elements that provide a more enriching reading experience. From luxury residences to investment opportunities, we cover everything to keep you informed and inspired.

Our feature this quarter highlights the "Malaysia My Second Home" (MM2H) program, opening doors for those looking to make Malaysia their second home. We've also got in-depth coverage of prime real estate options such as Wyndham Suites KLCC and Pavilion Square, all located in Kuala Lumpur's prestigious Golden Triangle. Whether you're looking for your next home, a savvy investment, or both, our content will help guide you in making the right choice.

As part of our interactive feature, we encourage you to take a quick tour through our visual tutorial available at the bottom of this letter. This guided walkthrough will help you make the most out of our new digital tools and enhance your reading experience. We hope this new format will not only inform but also delight as you explore the exciting opportunities in Malaysia's real estate market.

Yours sincerely,

Francis Ngooi
EDITOR-IN-CHIEF



DISCOVER MALAYSIA: YOUR GATEWAY TO A SECOND HOME

Malaysia, a country celebrated for its diverse culture, stunning landscapes, and warm hospitality, has long been a preferred destination for travelers and expatriates alike. But beyond its allure as a vacation spot, Malaysia offers an exceptional opportunity for those looking to make it their home away from home through the Malaysia My Second Home (MM2H) program.

The MM2H program, initiated by the Malaysian government, is designed to welcome foreigners who wish to live in Malaysia on a long-term basis. It offers a range of benefits, including a renewable 10-year visa, the option to own property, and access to world-class healthcare and education. The program has attracted thousands of participants from all over the world, drawn by Malaysia's affordable cost of living, safe environment, and vibrant local community.

Whether you are seeking a place to retire, a base for business, or simply a second home that offers a unique blend of modern amenities and rich cultural heritage, the MM2H program could be the perfect choice. In the following pages, we will explore the key requirements and benefits of the MM2H program and guide you through the application process to help you start your new journey in Malaysia.



MALAYSIA MY SECOND HOME (MM2H) PROGRAM: YOUR GATEWAY TO A NEW LIFE IN MALAYSIA

The Malaysia My Second Home (MM2H) program, initiated by the Ministry of Tourism, Arts, and Culture, is designed to encourage foreigners to live or retire in Malaysia on a long-term basis. Here are the key details and categories under this program, accurate as of July 22, 2024.

Copyright of KWKLCC - PROPESTATES.COM

MM2H PROGRAMME INSIGHTS

Introduction to MM2H Programme

Overview of the Malaysia My Second Home (MM2H) Programme

Launched by Malaysian Ministry
The MM2H Programme was initiated by the Ministry of Tourism, Arts, and Culture Malaysia to attract foreign individuals.

Open to Diplomatic Countries
Available to citizens of countries that hold diplomatic ties with Malaysia, ensuring a broad scope of eligibility.

Residency Attraction Objective
The programme aims to entice foreigners to choose Malaysia as their second home for an extended period.

Long-term Visa & Benefits
Participants are granted a long-term visa along with various perks and advantages to enhance their stay.

03

Eligibility and General Requirements

Key Guidelines for MM2H Programme

Age Requirement

Individuals must be 25 years or older to qualify for the MM2H programme.

Country Eligibility

Applicants must be citizens of countries with established diplomatic relations with Malaysia.

Application Process

Submission of applications is exclusive to licensed MMH tour operators.

Processing Authority

All applications and renewals are handled by the One Stop Centre, MM2H/Immigration Department.

Key Financial Requirements for MM2H



Category	Fixed Deposits (FD)	Residence Purchase	Participating Fee	Withdrawal Flexibility
Platinum	USD 1 million. must be held in a licensed Malaysian bank.	Compulsory to purchase a residence valued at RM 2Mil or above. The residence cannot be sold for 10 years but can be upgraded.	RM 200,000 for the principal	Allowance to withdraw up to 50% of the FD for essential purposes like residence, education, medical, or tourism, ensuring financial security and flexibility.
Gold	USD 500,000 must be held in a licensed Malaysian bank	Compulsory to purchase a residence valued at RM 1Mil or above. Selling is not allowed for 10 years but upgrading to a higher value is permitted.	RM 3,000 for the principal	Allows a maximum withdrawal of 50% of the Fixed Deposit for specific purposes like residence, education, medical and tourism.
Silver	USD 150,000 must be held in a licensed Malaysian bank	Compulsory to purchase a residence valued at RM600,000 or above. Selling is not allowed for 10 years but upgrading to a higher value is permitted.	RM 1,000 for the principal	Up to 50% of the FD can be withdrawn for specific purposes.

The Malaysia My Second Home (MM2H) program offers three pass durations: Platinum with a 20-year visa for long-term stays, Gold with a 15-year visa for flexible, extended residence, and Silver with a 5-year visa for medium-term stays. Each option caters to different lifestyle needs and plans.

PASS CATEGORIES DURATION

Duration of MM2H Passes Analysis

Distribution of MM2H Pass Categories by Duration



Benefits of MM2H Programme

Advantages of Participating in the MM2H Programme



 Long-term Visa with MEV Participants receive a Multiple Entry Visa (MEV) for an extended period, offering flexibility for travel	 Dependents Inclusion Eligible dependents include spouse, children (under 21 or certified with disabilities), parents, and parents-in-law,	 Education Opportunities Dependents can access education up to tertiary level in government-recognized institutions, ensuring educational continuity and	 Medical Treatment Provision Permits long-term medical treatment in Malaysia, providing access to quality healthcare services for participants and	 Tax Exemptions on Funds Tax exemptions apply to incoming funds like Fixed Deposits, enhancing financial benefits for participants living in
--	---	---	---	---

The MM2H program offers attractive options for those seeking to make Malaysia their second home. Whether you aim for a luxury lifestyle under the Platinum category or a more modest arrangement with the Silver category, Malaysia provides a welcoming environment with numerous benefits.



Key Takeaways

Essential insights on MM2H Programme Guidelines Overview



01

Long-term Residence with Benefits

MM2H offers extended residency in Malaysia with attractive perks like tax exemptions and stable healthcare options.



02

Financial Flexibility

Choose from diverse financial categories and obligations, providing options that suit individual preferences and budgets.



03

Renewal and Compliance Procedures

Comprehensive processes ensure seamless renewal and compliance, offering clarity and guidance throughout the residency period.



04

Family-Friendly Benefits

Ideal for individuals looking for extended residence in Malaysia with family benefits like education opportunities and family healthcare packages.



We are your all-in-one solution for making Malaysia your second home. As a trusted partner, we recommend working with a licensed MM2H agency for expert consultation and visa processing. Let us be your property agent and help you find the perfect home in Malaysia. Your journey to a new beginning starts with us!



**WELCOME TO MALAYSIA, WHERE WARMTH KNOWS NO BOUNDS.
YOUR SECOND HOME, WHERE EVERY HEART FEELS AT HOME!**

DISCOVER KUALA LUMPUR'S PREMIER LUXURY RESIDENCES & CORPORATE SUITES AT "PAVILION SQUARE"

Pavilion Square is the new exclusive and upcoming project in Kuala Lumpur, Bukit Bintang, Malaysia promises convenience and for those seeking a city living lifestyle that resonates with the exclusive vibes that the location offers. With the offices around, business, enjoyment and family can all be at the same place. The identity of the residence and workplace is for the people to collaborate, grow and thrive together with a community.

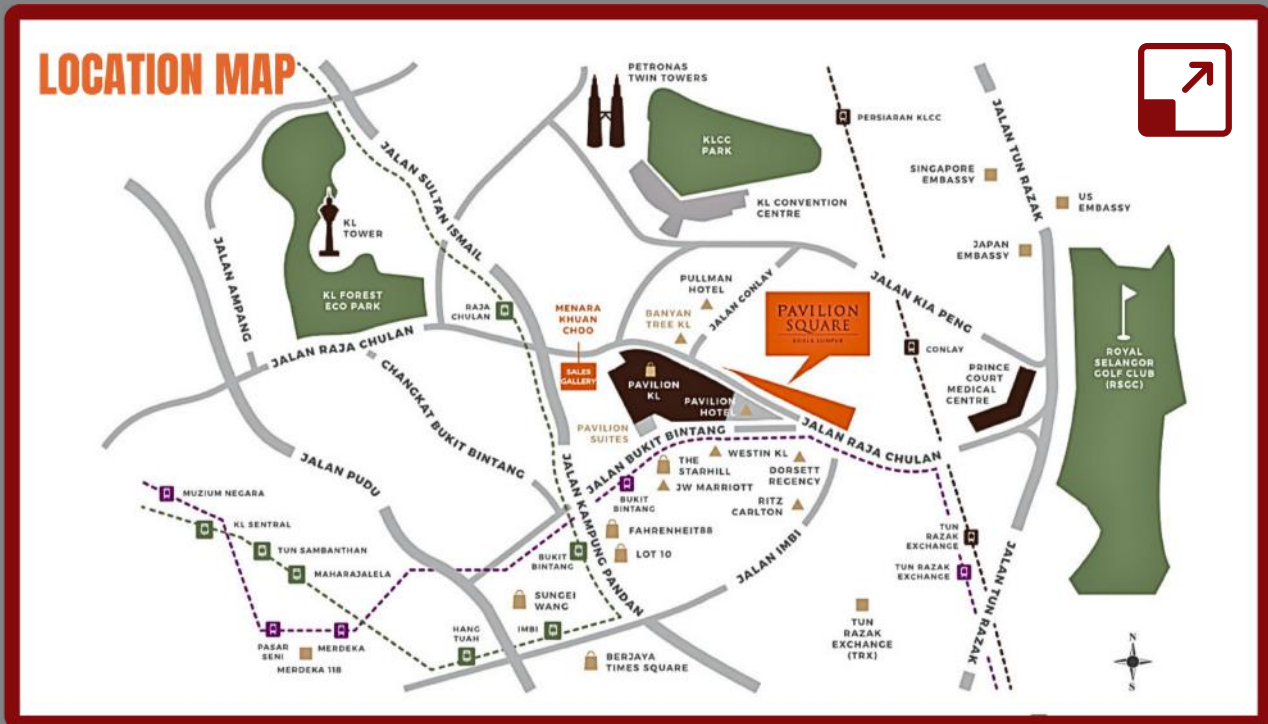
Why should you own this property?

The pavillion square developed by the pavillion group is made up of unique features that encompasses a functional strata office suites seamlessly with its luxury residence, with its starting price at **RM 1.24 mil.**

Why Pavilion Square, Kuala Lumpur?

Pavilion Square, Kuala Lumpur is a project of mixed-use development that will be located at the heart of Kuala Lumpur's bustling Bukit Bintang district. Pavilion's iconic landmark envisions of luxury residences, shops, and functional strata office suites. altogether as a part of community of work, fun and family . Owned and developed by the Pavilion Group stores located within Pavilion Square promises incomparable convenience to residents and office tenants alike.





So... Where exactly is Pavilion Square located?

Pavilion Square Bukit Bintang is located just across the street from Pavillion Shopping Mall that within the vibrant Golden Triangle of Kuala Lumpur. This coveted area is renowned for its world-class shopping, luxury retail, iconic cultural landmarks, and unparalleled accessibility. Its in proximity of a 3-8 minutes of walking distance to the Pavilion Kuala Lumpur mall and the Bukit Bintang MRT station adds to the exceptional convenience it offers.

Being within Pavilion Square promises incomparable convenience to residents and office tenants alike as a saying goes with "Urban life is a canvas painted with the vibrancy of people, culture, and diversity." From retail stores located within Pavilion to world-class shopping malls just a stroll away, Pavilion Square is truly at the center of it all with accessibility to key attractions.

What type of suites does Pavilion Square offer?

Pavilion Square features a collection of luxury residences and corporate suites carefully designed with modern and functional layouts and plus point that each of the residential units comes with a balcony which is very rare, in the current area of Kuala Lumpur. These functional strata office suites ranging from 504 sq.ft to 1,243 sq.ft are ideal for businesses looking to elevate their presence in Kuala Lumpur. Designed with tenant needs in mind, these spaces offer both style and functionality, with an understanding of "function follows form" that can be argued to go both ways.

Whether you crave trendy dining, entertainment options, or need access to transportation networks, Pavilion Square's central location has it all. Living within the Golden Triangle ensures effortless commuting thanks to a network of MRT lines, bus routes, and major roadways.

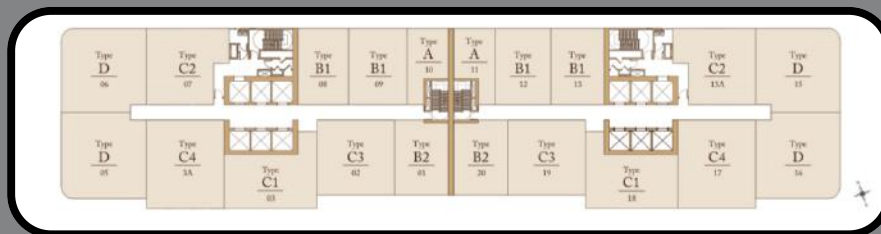
Is Pavilion Square the right place for me?

Pavilion Square caters to those seeking a cosmopolitan lifestyle defined by convenience, luxury, and a central location. Whether you're a business person or buying for the future of your investment portfolio or simply just drawn to the city's energy then Pavilion Square might be your perfect fit.

Layout Options that suits your city life, each with its own balcony.

The layout of each Luxury Residences suite ensures that you would have your own private space when entering into your own home.

FLOOR & LAYOUT PLANS



CLICK ON IMAGE TO ENLARGE



TYPE A

STUDIO
504 sq.ft. (46.8 sq.m.)



TYPE B1

1+1 BEDROOM
770 sq.ft. (71.5 sq.m.)



TYPE B2

1+1 BEDROOM
772 sq.ft. (71.7 sq.m.)



TYPE C1

2 BEDROOMS
966 sq.ft. (89.7 sq.m.)



TYPE C2

2+1 BEDROOMS
978 sq.ft. (90.9 sq.m.)



TYPE C3

2+1 BEDROOMS
1,100 sq.ft. (102.2 sq.m.)



TYPE C4

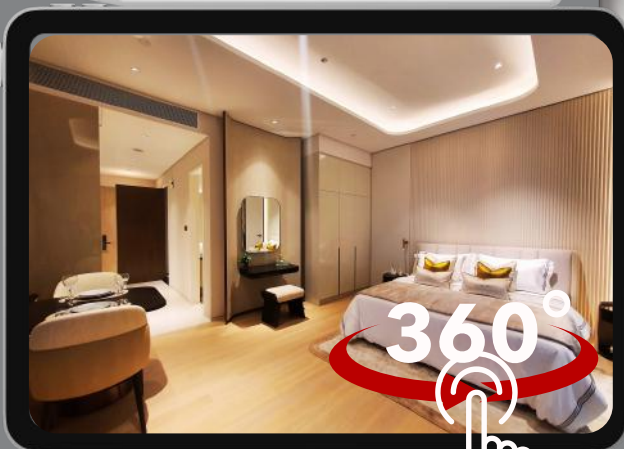
2+1 BEDROOMS
1,272 sq.ft. (118.2 sq.m.)



TYPE D

3 BEDROOMS
1,255 sq.ft. (116.6 sq.m.)





TYPE A

STUDIO
504 sq.ft. (46.8 sq.m.)

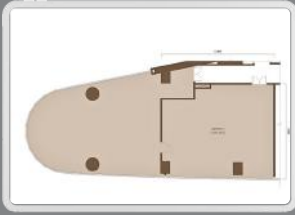


TYPE C4

2+1 BEDROOMS
1,272 sq.ft. (118.2 sq.m.)

Take A  VR TOUR
OF THE SHOWROOMS

EXPLORE PAVILION SQUARE CORPORATE SUITES LAYOUTS



OFFICE 1
2,464 SQ.FT.



OFFICE 2
1,112 SQ.FT.



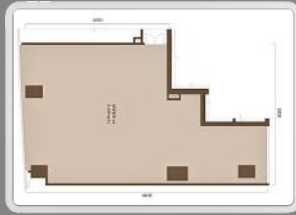
OFFICE 3
1,481 SQ.FT.



OFFICE 3A
1,093 SQ.FT.



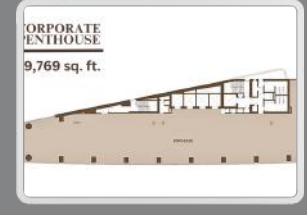
OFFICE 5
1,795 SQ.FT.



OFFICE 5A
1,668 SQ.FT.



OFFICE 5B
1,426 SQ.FT.



**CORPORATE
ENTHOUSE**
9,769 sq. ft.
PENTHOUSE
9,769 SQ.FT.

**Secure Your Spot in the Hottest New Development
"LIMITED UNITS AVAILABLE!"**



REGISTER HERE

WYNDHAM SUITES KLCC

“A PREMIER INVESTMENT OPPORTUNITY”

Discover the epitome of luxury and comfort at the heart of Kuala Lumpur. This article dives into the unparalleled experience of staying in KLCC suites, specifically at 8 Kia Peng aka. Wyndham Suites KLCC. Find out why these locations offer more than just a stay, a long term investment plan and a memorable journey amidst the iconic KLCC skyline.






COPYRIGHT of KWKLCC - PROPESTATES.COM

INVESTMENT OVERVIEW

Wyndham Suites KLCC: Overview

Key Details and Investment Highlights of Wyndham Suites KLCC



				
Prime Freehold Land Located in the Golden Triangle, this 1.09-acre site ensures high visibility and accessibility, attracting both investors and residents' FREEHOLD land ownership.	Fully Furnished Units Offering 442 fully furnished units, Wyndham Suites KLCC caters to luxury living, enhancing a appeal for potential buyers and renters.	High Investment One of the highest investment returns in the area, making it an ideal choice for investors.	Stunning Views Breathtaking views of the iconic Petronas Twin Towers, enhancing your living experience.	Central Location Walking distance to KLCC, Pavilion KL, and MRT stations ensures conveniences and connectivity.

LOCATION BENEFITS

Strategic Location and Connectivity

Discover the prime advantages of Wyndham Suites KLCC's location



 Proximity to Key Landmarks Located just 1.0 km from KLCC and Pavilion KL, enhancing accessibility.	 Major Attractions Nearby Key attractions like KL Tower, PNB118, and TRX are within a 15-minute drive.	 Access to Medical Facilities Close to top medical centers: Prince Court, National Heart Institute, Gleneagles.	 Educational Institutions Proximity to international schools caters to expatriate families and residents.	 Embassies and Government Offices Nearby embassies provide convenience for international business travelers.
				



The suites are the epitome of luxury. The residences, ranging from 716 sqft, are fully fitted and furnished with modern contemporary interior. The international standard Sky lounge on Level 46 and 47 is a perfect venue for private functions, with a commanding view of the Kuala Lumpur skyline.

COPYRIGHT of KWKLCC - PROPESTATES.COM

UNIT TYPES & AMENITIES

Floor Plans and Unit Types

Explore the diverse offerings of Wyndham Suites KLCC for investment.



Type A Units

Offer 716 to 746 sqft of space, featuring 1+1 bedrooms and 1 car park, ideal for singles or couples.



Type C Units

Spacious 987 to 988 sqft with 2 bedrooms and 2 car parks, perfect for small families seeking comfort.



Type D Duplex

Luxurious duplex units ranging from 1,341 to 1,745 sqft, featuring 2+1 to 3 bedrooms and 2 car parks, ideal for larger families.

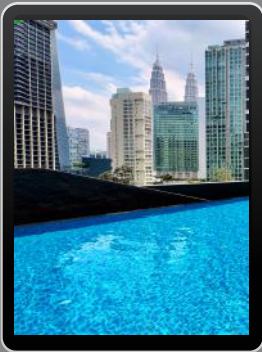


Fully Furnished

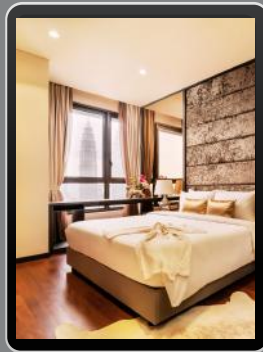
All units come fully furnished with modern amenities, ensuring a hassle-free living experience for residents.



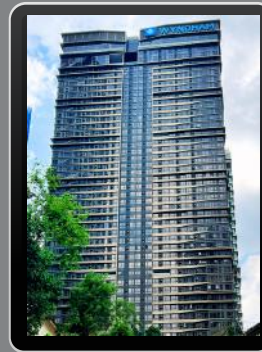
Layout Plans - Click To Enlarge



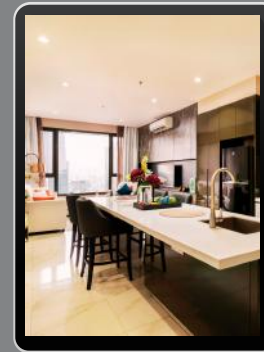
TYPE A



TYPE B & C



TYPE D1 & D2



TYPE D3 & D4

When it comes to property investing there are 3 factors that determines it's successes location, value and condition. With 8 Kia Peng aka. Wyndham Suites KLCC it is strategically located at the center of Kuala Lumpur's most dynamic district. Guests are within walking distance of iconic landmarks such as the Petronas Twin Towers and the vibrant shopping and dining scene of Bukit Bintang. This central location is not just convenient but also offers a unique view of the city's skyline, making it an ideal choice for both leisure and business travelers.

COPYRIGHT of KWK LCC - PROPESTATES.COM

LUXURY FACILITIES

Luxury Amenities

Discover the Exceptional Facilities at Wyndham Suites KLCC



A partnership with Wyndham Suites KLCC Optional Leaseback Program. The Leaseback Program is a real estate arrangement where the buyer of a suite at Wyndham Suites KLCC can choose to lease the property back to the hotel management. This agreement typically spans several years and offers a fixed return to the suite owner. It's an attractive option for those who want to invest in property but don't wish to deal with the day-to-day hassles of being a landlord. With a monthly occupancy of up to 90% it is an investment that is worth to consider.

LEASEBACK ADVANTAGES

INVESTMENT RETURN: LEASEBACK PROGRAM

Maximize Your Returns with Our
Leaseback Agreement





Favorable Lease Terms
Enjoy a 2-year leaseback agreement that is renewable, providing flexibility and stability.



Attractive Profit Sharing
Benefit from an 85% profit share after expenses, ensuring substantial returns on your investment.



Quarterly Performance Reports
Receive detailed performance reports quarterly from the hotel operator to keep you informed.



Personal Use Discounts
Maintain flexibility with an option for personal use, just with prior notice

COPYRIGHT of KWKLCC - PROPESTATES.COM

BOOKING ESSENTIALS

Booking Procedure

Essential Steps for Securing Your Investment in Wyndham Suites KLCC

01



Fully Furnished Units

Experience immediate comfort and luxury with our fully furnished units, ready for occupancy.

02



Car Park Availability

Enjoy the convenience of dedicated car park(s) for residents, ensuring easy access at all times.

03



Free S&P Legal Fee

Benefit from our promotional offer of a complimentary Sales & Purchase legal fee, enhancing your investment value.

04



Free Loan Legal Fee

We cover the loan legal fees, making the financing process smoother and more affordable.

05



Foreign Consent Included

Rest assured, foreign consent is seamlessly included in the selling price, simplifying your purchase.

INVEST NOW



kwklcc REAL ESTATE

KUALA LUMPUR REAL ESTATE

Powered by KUALA LUMPUR

17

MITSUI SERVICED SUITES - A PREMIER RENTAL APARTMENTS AT KUALA LUMPUR'S GOLDEN TRIANGLE




Mitsui Serviced Suites For Rent in Bukit Bintang City Centre. The premier of serviced apartments, tenancy starts September 2024!





Are you looking for a place to rent long term in the Kuala Lumpur area? Look no further to experience an elevated lifestyle home, in the area of Bukit Bintang City Centre (BBCC). A property managed by the team in Mitsui Fudosan Asia. Live in this place without the need of owning one. The problem is how can we do so? Let us dive more into this topic.

COPYRIGHT of KWKLCC - PROPESTATES.COM

Why Choose Mitsui Serviced Suites?

Explore the Comforts and Conveniences of Our Exceptional Offerings



			
<p>Fully Furnished Apartments</p> <p>Experience comfort and functionality with our stylishly designed suites.</p>	<p>Prime Location</p> <p>Benefit from our strategic positioning near major business hubs.</p>	<p>Customizable Services</p> <p>Enjoy tailored services that cater to your individual preferences.</p>	<p>Competitive Pricing</p> <p>Take advantage of our attractive pricing structures for all budgets.</p>

Why live in Mitsui Serviced Suites?

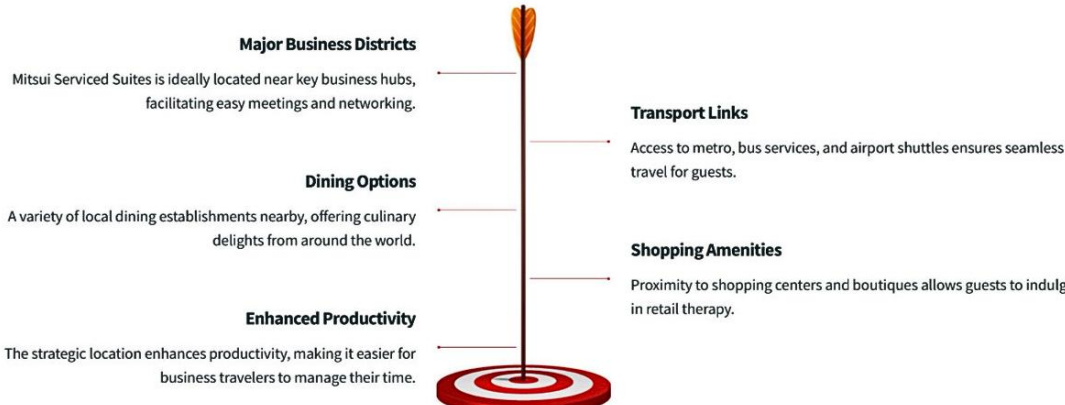
When it comes to choosing a serviced unit to live in, there are many choices in Kuala Lumpur, Malaysia. But Mitsui serviced residences stands out from the rest, this is because the entire space is managed by Mitsui Fudosan Asia's group. Where each tenant living in has an intention of having at least a month long of stay. This means that an operation of AirBnb is not allowed in the vicinity, so that you may enjoy your privacy in your stay.

COPYRIGHT of KWKLCC - PROPESTATES.COM

ACCESSIBILITY HIGHLIGHTS

Location and Accessibility

Prime Positioning for Business and Leisure Travelers



Major Business Districts
Mitsui Serviced Suites is ideally located near key business hubs, facilitating easy meetings and networking.

Dining Options
A variety of local dining establishments nearby, offering culinary delights from around the world.

Enhanced Productivity
The strategic location enhances productivity, making it easier for business travelers to manage their time.

Transport Links
Access to metro, bus services, and airport shuttles ensures seamless travel for guests.

Shopping Amenities
Proximity to shopping centers and boutiques allows guests to indulge in retail therapy.

COPYRIGHT of KWKLCC - PROPESTATES.COM

UNIT FEATURES

Fully Equipped Units






Experience unparalleled comfort and convenience at Mitsui Serviced Suites.

Feature	Description
Electrolux Kitchen Appliances	Includes Hood, Hob, Oven, and Refrigerator for a complete cooking experience.
Washer & Dryer	In-suite washer and dryer provide ultimate convenience for guests.
Panasonic Smart TV 50"	Enjoy entertainment with a large smart TV in every suite.
Hallmark Mattresses	Sleep peacefully on high-quality Hallmark mattresses designed for comfort.
Safety Deposit Box	Each suite is equipped with a safety deposit box for guest valuables.

How can we ensure the quality then for the residents?

The strategic partnership between Mitsui Fudosan Asia, BBCC Development Sdn Bhd, and MFBCC Serviced Suites Sdn Bhd ensures that residents benefit from the expertise and experience of the industry giants. This collaboration brings a new level of sophistication to serviced living in Kuala Lumpur.

The various needs of residents will be taken care of by the various quality services available such as the concierge service, housekeeping, in-house maintenance and other perks in the BBCC area.

<p>LUXURY AMENITIES</p> <h3>Exceptional Amenities</h3> <p>Discover Unmatched Comforts at Mitsui Serviced Suites</p>	 <h3>High-speed Wi-Fi</h3> <p>Stay connected effortlessly with our reliable high-speed internet access, perfect for work or leisure.</p>	 <h3>Weekly Housekeeping Services</h3> <p>Enjoy a pristine living environment with our dedicated weekly cleaning services, ensuring comfort and hygiene.</p>
 <h3>Concierge Services</h3> <p>Benefit from personalized assistance with our concierge services available daily from 8 AM to 11 PM.</p>	<p>GOOD JOB</p>  <h3>24/7 In-house Maintenance</h3> <p>Experience peace of mind with our around-the-clock maintenance staff ready to address any issues promptly.</p>	 <h3>Collaboration with LaLaport BBCC</h3> <p>Enjoy exclusive privileges and conveniences through our partnership with LaLaport BBCC, enhancing your stay.</p>

COPYRIGHT of KWKLCC - PROPESTATES.COM

BUSINESS TRAVELER AMENITIES

Tailored Services for Business Travelers

Discover the Unique Offerings of Mitsui Serviced Suites for Professionals



Flexible Rental Options

Month-to-month rentals tailored for business clients. Ideal for short-term assignments and relocations. No long-term commitments, providing maximum flexibility.

Comprehensive Concierge Services

Personalized assistance catering to business needs. Access to laundry and dry-cleaning services for convenience. Air conditioning maintenance ensuring optimal comfort.

Floor Plan and Interior Design

The serviced residence block is a 44-storey building, comprising a total of 269 units with built-ups from 532 sq ft single bedroom unit to spacious 3-bedroom apartments. Each unit is designed to offer a homely living experience, completed with modern amenities and high-quality finishes of Japanese aesthetics and quality, which reflects the zen interior architecture style.



TYPE A



TYPE B



TYPE C



TYPE D



COPYRIGHT of KWKLCC - PROPESTATES.COM

PRICING OPTIONS

Rental Options and Pricing

Explore our diverse range of beautifully furnished units for your comfort.

Price Starts From

<p>RM3,500</p> <p>1 Bedroom Unit Pricing</p> <p>Our 1-bedroom units are priced at RM3,500, offering a cozy living space that combines comfort and style, ideal for individuals or couples.</p>	<p>RM4,600</p> <p>1+1 Bedroom Unit Pricing</p> <p>The 1+1 bedroom units at RM4,600 provide extra space for those who need flexibility, perfect for professionals or small families.</p>	<p>RM6,300</p> <p>2 Bedroom Unit Pricing</p> <p>For larger groups, our 2-bedroom units are available for RM6,300, designed to accommodate families comfortably with modern amenities.</p>	<p>RM8,000</p> <p>3 Bedroom Unit Pricing</p> <p>Our premium 3-bedroom units are offered at RM8,000, providing expansive living areas and luxurious features for those seeking ultimate comfort.</p>
--	---	---	---

REGISTER HERE

Ready to Experience Comfort?

Join us at Mitsui Serviced Suites for unparalleled comfort and service. Book now!

REAPFIELD PROPERTIES TURNS 40!

REAPFIELD

Powered by **kw** MALAYSIA
KELLERWILLIAMS

Celebrating

40

YEARS OF EXCELLENCE

CONNECT WITH US:



REAPFIELDHQ



REAPFIELD.COM



REAPFIELDKW

HOTLINE: +6017 - 396 7228

REAPFIELD PROPERTIES (HQ) SDN BHD E (1)0452

No. 1-8B, Jalan PJU 8/3A, Bandar Damansara Perdana, 47820 Petaling Jaya.

T: 03-7728 6230 F: 03-7129 0893 E: rphgereapfield.com



A Message from the Founder, Mr. DAVID ONG

The story of Reapfield started as spark of ambition flickering in the dim light by its founder David Ong. "We were young, hungry, fuelled by the desire to grow, lead, to manage our own agency. We didn't have much, but we had God's faithfulness." A belief that still stands as the core value of Reapfield in doing things the right way, with integrity and a love for people. As he quotes "A good name is more precious than silver or gold," a principle that guided Reapfield's relationships and its commitment to serving others.

Throughout its journey, Reapfield faced its share of storms. Economic downturns, market fluctuations, and internal challenges threatened to capsize the company. But like a skilled sailor navigating rough seas, Reapfield persevered. All because there were people around David's life that encouraged and uplifted him. With this he held on tight and never gave up despite the hardship.

Today, as Reapfield celebrates 40 years of resilience, its story continues to stand as a testament to God's faithfulness, it remained committed to empower others. The company's mentorship programs and collaborative initiatives with the idea of "Success through others," has brought Reapfield into greater heights of success. As quoted by David "love people and use money, not love money and use people."

Reapfield Properties introduces its enhanced agent commission scheme, "STEP UP," along with exciting new career advancement opportunities.

stepUP

1. Achieve steady income growth for financial and time freedom

2. Achieve progressive upward mobility and higher rankings

3. A Supportive Community: Your Success is Our Success

CHIEF DIVISION DIRECTOR
GROUP DIVISION DIRECTOR
DIVISION DIRECTOR
TEAM MANAGER
TEAM LEADER
SENIOR REN
REN

LEVEL 3
LEVEL 2
LEVEL 1
YOU

Unsure? We've Got You Covered! I am ready to STEP UP today!

productivity:

1. Networking Meetings
2. Personal Training Sessions
3. Tech Trainings
4. Special Programmes
5. Free 180-minute Agent Course
6. Legal & Tax Series
7. On-Demand AI/ AI Security

Leadership:

1. Team Leaders Meeting
2. Job-rotating
3. Performance Review
4. Market Centre Oversight
5. Market Centre Performance Coaching for Team Leaders

Growth:

1. Customized CRM
2. Expenses
3. Career Reviews/ Performance Plan
4. Social Media
5. Special Events

Scan here to register now!

I can step up my game!

Find out more!
<https://www.reapfield.com>

Check us out on...
f i n

Join Us

Your Pathway to Success Made Simple



PODCAST

BFM.MY

PLAY NOW

A hearty Congratulations to **Ms. Chan Ai Cheng**, Immediate Past President of MIEA and Consultant at Reapfield Properties, for being honored with the prestigious "Estate Agent of the Year" award by the Board of Valuers, Appraisers, Estate Agents, and Property Managers (BOVAEP) on August 23, 2024.

The "Estate Agent of the Year" award is one of the most coveted distinctions in the real estate industry, celebrating exceptional achievements, ethical practices, and meaningful contributions to the profession. This recognition highlights Ms. Chan's remarkable accomplishments and her unwavering dedication to elevating the standards of real estate, setting a benchmark for others to aspire to.

Ms. Chan was recently interviewed by Shazana Mokhtar from BFM.MY, where she discussed the Malaysian property sector's impressive growth, noting that the first half of 2024 saw the highest property sales increase since 2019. Click the podcast icon to listen to the full interview.

REAPFIELD

Powered by **KW MALAYSIA**
KELLERWILLIAMS



GROW YOUR CAREER WITH US!



Trusted Legacy:
40 Years of Excellence

Global Reach:
Powered by Keller Williams

Proven Success System
For Agent Success

Our Core Values & Beliefs :
Guiding Principles for Success

Cutting-Edge Training
and Growth Programs

Client-Centric Focus and
Community Engagement

Guaranteed
Commissions

A Progressive Commission
Plan Tailored for Growth

KW Where Entrepreneurs Thrive

REAPFIELD PROPERTIES (HO) SDN BHD E (1)0452

No. 1-8B, Jalan PJU 8/3A, Bandar Damansara Perdana, 47820 Petaling Jaya.
T: 03-7728 6230 F: 03-7129 0893 E: rphq@reapfield.com HOTLINE: +6017 - 396 7228
WWW.REAPFIELD.COM

APPLY NOW



Becoming A Million Dollar Realtor (BMR) with Real Estate Expert, Colin Tan

REAP THE BENEFITS
Powered by **KW MALAYSIA**
KELLERWILLIAMS

THE FORMULA TO
BMR

STRENGTH
BECOMING A MILLION DOLLAR REALTOR **BMR**

+

STRUCTURE
BECOMING A MILLION DOLLAR REALTOR **BMR**

+

SYSTEMS
BECOMING A MILLION DOLLAR REALTOR **BMR**

+

STRATEGIES
BECOMING A MILLION DOLLAR REALTOR **BMR**

+

SKILLS
BECOMING A MILLION DOLLAR REALTOR **BMR**

↓

BECOMING A MILLION DOLLAR REALTOR BMR

PROPESTATES.COM

REAL ESTATE EXPERT
COLIN TAN
BECOMING A MILLION DOLLAR REALTOR **BMR**

WHAT'S IS THE FORMULAR TO **BMR?**

PROJECT DIRECTOR | SENIOR REN
FRANCIS NGOOI
REN 45037
BECOMING A MILLION DOLLAR REALTOR **BMR**

kwkcc
LUXURY MOVING REDEFINE
Powered by **KW MALAYSIA**

WATCH NOW

REAPFIELD

Powered by **kw** MALAYSIA
KELLERWILLIAMS



I'VE ATTENDED
BECOMING A
MILLION DOLLAR REALTOR **BMR**

WITH

COLIN TAN
BECOMING A
MILLION DOLLAR REALTOR **BMR**

LOST FOR WORDS.
CLICK BELOW TO FIND
OUT FOR YOURSELF!

ENROLL NOW



 propestates.com

 +6011-6518 5155



We all have great mentors, leaders, coaches, and teachers — but have you reached the goal of your desire?

Opportunities don't knock often, but now is your chance to seize one. Join us for an exclusive "Becoming A Million Dollar Realtor (BMR)" talk led by renowned real estate expert Colin Tan. Meet him in person and discover how you can expand your horizons!

Click "LEARN MORE" to find the next available showcase date!

LEARN MORE



SUCCESSFUL AGENTS' TESTIMONIALS!

REAPFIELD

Powered by **kwm** MALAYSIA

Our Agents' Testimonial

Vincent Tai

Senior REN (REN 00990)

★★★★★



“

I would like to express my sincere gratitude to Sifu Colin Tan for his invaluable BMR 1st Batch Program and Training. His effective strategies and expert guidance have enabled me to successfully close 6 deals, including 3 sales and 3 rentals. I am particularly excited as the buyer for my 6th deal is scheduled to sign the SPA on Tuesday, 10th September. All glory to God for this achievement.

[CONTACT VINCENT](#)

REAPFIELD

Powered by **kwm** MALAYSIA

Our Agents' Testimonial

Jordan Tan

Senior REN (REN35844)

★★★★★



“

I joined Colin's class to invest into my personal growth, and it was certainly the correct decision. We had the opportunity to learn first hand the inner workings, mindset and framework of a person who has been there and done that. Colin generously shared his journey in the real estate industry & the lessons and soft skills he has acquired. My takeaway is now, I see a longer term vision in this business, to take it to the next level, and make it more sustainable, lucrative & worthwhile. Recommended!

[CONTACT JORDAN](#)

REAPFIELD

Powered by **kwm** MALAYSIA

Our Agents' Testimonial

Richmond Liew

REN (REN 54418)

★★★★★



“

As I navigated my journey in real estate, I often found myself lacking a clear structure, simply going wherever the day took me. However, after attending Colin Tan's session, my mindset shifted completely. I began to approach the business with a more strategic, business-oriented perspective, which resulted in closing more deals. I thank God for placing me in the right place at the right time and for connecting me with the right people.

[CONTACT RICHMOND](#)

REAPFIELD

Powered by **kwm** MALAYSIA

Our Agents' Testimonial

Carmen Lee

Senior REN (PEA 3154)

★★★★★



“

I wish I had discovered this program earlier in my career—it could have changed my trajectory completely. The topics on mindset and scripts stood out, and Colin's energy in the classes is something you must experience firsthand.

There were many "aha" moments, and as I implement what I learned, I'm already seeing positive changes in my performance.

This program offers valuable insights for both new and experienced RENs. Approach it with an open mind, apply what resonates, and it could be a game-changer.

[CONTACT CARMEN](#)

Do You Want To Become A Million Dollar Realtor?

ENROLL NOW





OUR LISTING CATEGORIES



NEW DEVELOPMENT



NEW & COMPLETED



SUBSALE PROPERTIES



RENTAL PROPERTIES



LANGKAWI PROPERTIES



ESTATE ACQUISITION

LEARN MORE



LIST YOUR PROPERTY WITH US



PAST PUBLICATIONS



READ MORE





CONTACT US & FOLLOW US ON OUR SOCIAL MEDIA



**A Production by KWKLCC (PROPESTATES.COM),
Editor-in-Chief & Publisher: FRANCIS NGOOI**