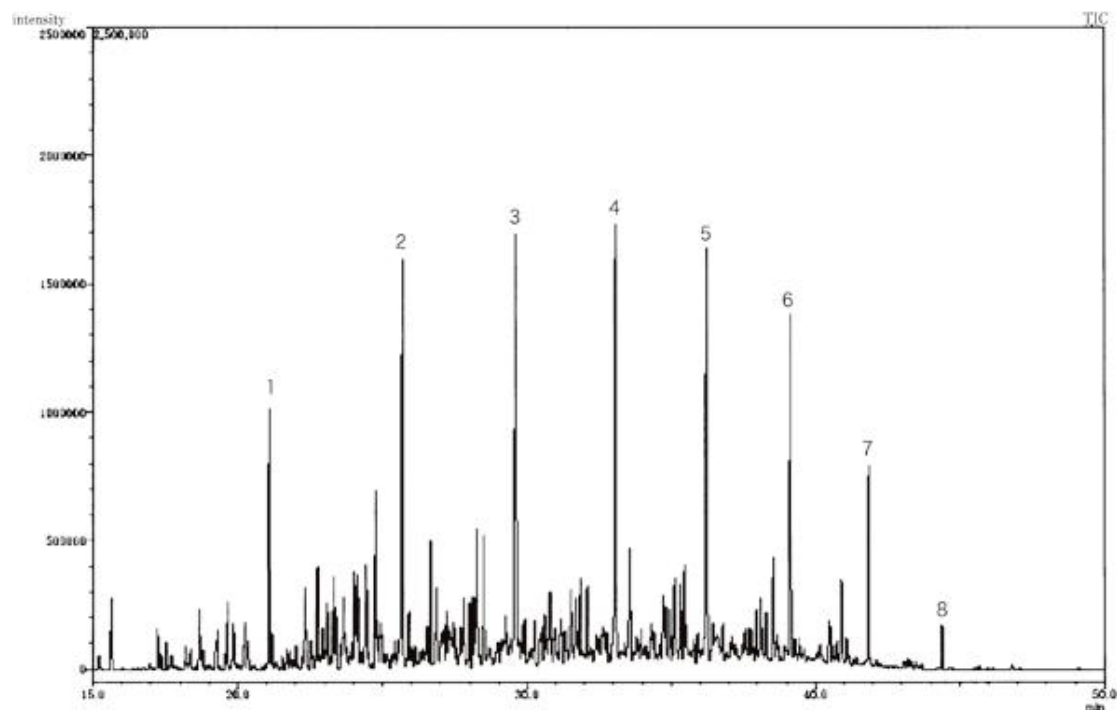


# InertSearch™ for GC

InertCap® Applications

## Kerosene

Data No. GA057-0000



System :GC/MS

Column :InertCap 1

0.25mmI.D.×60m df=0.25µm

Column Temp. :40°C (10min)→5°C/min→250°C (8min)

Carrier Gas :He 120kPa

Injection :Split 1:100 1µL

250°C

Detection :MS Scan

Sample :Kerosene

Solutes : 1. Nonane

2. Decane

3. Undecane

4. Dodecane

5. Tridecane

6. Tetradecane

7. Pentadecane

8. Hexadecane