

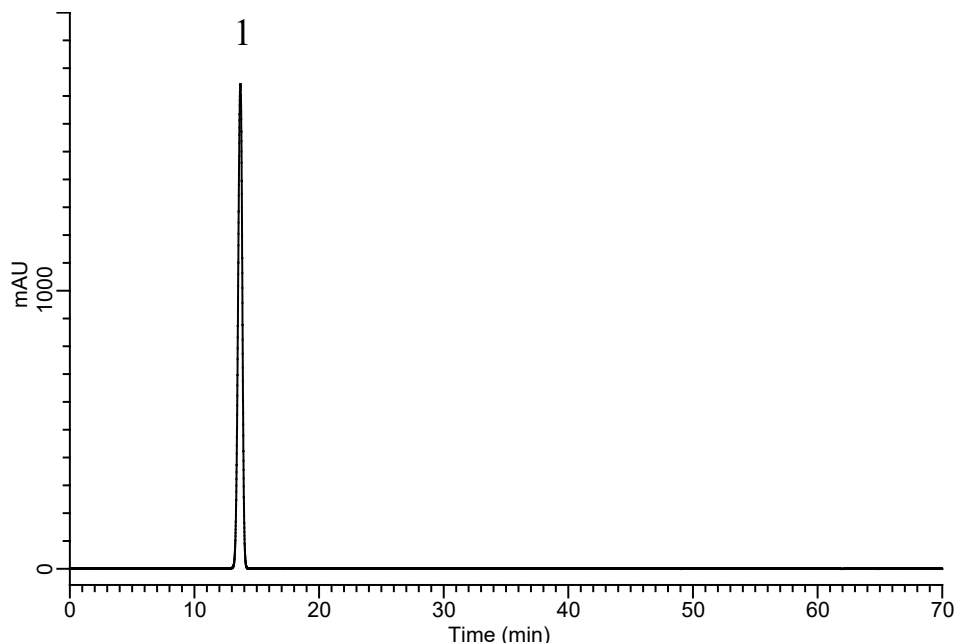
InertSearch for LC

Inertsil Applications

Analysis of Moxifloxacin

(Under the HPLC condition of USP43-NF38-3036, Moxifloxacin Tablets)

Data No. LB681-0772



Conditions

System : Primaide HPLC system
Column : InertSustain Phenylhexyl
(5 μ m, 250 x 4.0 mm I.D.)
Column Cat. No. : 5020-89020
Eluent : A) CH₃OH/Buffer* = 20/80, v/v
B) CH₃OH/Buffer* = 80/20, v/v

Analyte:

1. Moxifloxacin 0.33 mg/mL

Tailing factor : 0.91 (≤ 2.0)
RSD of the peak area (%) (n=6) : 0.79 (≤ 10.0)

Time (min)	A (vol. %)	B (vol. %)
0	95	5
22	95	5
39	30	70
52	30	70
53	0	100
58	0	100
58.1	95	5
70	95	5

Flow Rate : 1.1 mL/min
Col. Temp. : 50 °C
Detection : UV 293 nm
Injection Vol. : 25 μ L
Sample : Standard

*1.5 g/L of tetrabutyl ammonium hydrogen sulfate and 1 g/L of potassium dihydrogen phosphate in water. Add 2 mL of phosphoric acid for each liter of the solution and adjust with triethylamine to a pH 2.5.