

# Winchelsea



# Star

Price \$1

Your Weekly Community Newspaper

Since 1977

Vol 46 Ed 18

Tuesday 16 May 2023

[winchelseastar.org.au](http://winchelseastar.org.au)



## Winchelsea Shire Hall High Tea - a great success!

Story page 3



# Keep your recycling loose.

By putting your recycling in the bin loose and not in a plastic bag, it can be turned into new things like park benches and tables.

**A small act makes a big impact.**  
Find out how at [sustainability.vic.gov.au](https://sustainability.vic.gov.au)



Authorised by the Victorian Government, 1 Treasury Place, Melbourne.





# Winchelsea Shire Hall High Tea

## Wendy Greaves

The Winchelsea Shire Hall showcased another fabulous event over the weekend with the first High Tea.

A traditional high tea was served with delicious catering by the Barrabool CWA ladies and special tea from T2 tea together with a glass of bubbly or orange juice.

Those in attendance were blown away by the effort put in - fine china consisting of elaborate teapots, sugar bowls and milk jugs together with fine bone china place settings made this an event to remember.

The wonderful Cazza from local business Cazzas Best Buds completed each of the tables with a floral display.

A huge thanks to all those that helped with the planning, setting up, packing up, washing dishes (too good for the dishwasher), lending things and serving on the day.



## Thank our Barwon South West SES volunteers this WOW Day



Wednesday 17 May is Wear Orange Wednesday (WOW), a national day of thanks dedicated to State Emergency Service (SES) volunteers across the country.

Held annually during National Volunteer Week, WOW Day encourages the public to thank and acknowledge SES volunteers, for the invaluable contribution and commitment they make to local communities.

October 2022, saw VICSES volunteers respond to 13,700 Requests for Assistance, in a single month as major

flooding impacted the state. This was VICSES' busiest calendar month on record.

In the last 12 months, VICSES volunteers have responded to over 35,000 requests for assistance, generously donating their time in support of their communities.



## Volunteers Required

- Bus Driver & Outings Assistant
- Resident Visitor
- Events and Activities Assistant
- Group Wheelchair Walks Assistant
- Appointments Escort
- Social Support Activities
- Gardening - Winchelsea

Volunteers are essential to our aged care system, supporting the wellbeing of older people in their homes and in residential settings





For more information please contact Jessica Culhane, Communications and Community Partnership Officer via phone on [031 5267 1200](tel:03152671200) or via email [jculhane@hesse.vic.gov.au](mailto:jculhane@hesse.vic.gov.au)



## Wightons Lawyers

Dispute Resolution & Litigation

Debt Collection

Property Law

Wills & Estates

Powers of Attorney

Business Law

Family Law

By appointment only

22 Willis Street, Winchelsea  
ph. 5221 8777

[www.wightons.com.au](http://www.wightons.com.au)



# Thomas Mayo to be Guest Speaker

## Surf Coast Shire Council's National Reconciliation Week event

Respected First Nations author and advocate Thomas Mayo will share insights from the heart as guest speaker at Surf Coast Shire Council's National Reconciliation Week event.

Councillor Rose Hodge said having secured the Kaurareg Aboriginal and Kalkagal, Erubamle Torres Strait Islander man for an evening of reflection represented a significant coup for the Surf Coast Shire community.

"Thomas is a respected signatory to the Uluru Statement from the Heart and we are fortunate to have engaged him as we seek to deepen our understanding of the Statement and of meaningful steps towards Reconciliation," Cr Hodge said.

"Our event will support Reconciliation by providing an opportunity for people to understand the Uluru Statement from the Heart as an invitation which has

come directly from First Nations people. The invitation is about walking together, recognising Australian identity shaped across millennia and shaping 'a fuller expression of Australia's nationhood'."

The Uluru Statement from the Heart calls for three main things: Aboriginal and Torres Strait Islander Voice to Parliament enshrined in the Australian Constitution, Truth Telling and Makarrata or Treaty.

Council voted in April to support the Voice to Parliament as a step forward in its journey toward Reconciliation.

Australians will vote on enshrining a Voice to Parliament in a referendum between October and December this year.

Council will not seek to influence how people vote but will share clear and accurate information on what the Voice is and how to participate in the

referendum so people can make considered and informed choices.

National Reconciliation Week is 27 May to 3 June. Its 2023 theme Be A Voice for Generations encourages all Australians to be voices for Reconciliation in tangible ways in everyday lives.

The Thomas Mayo event in Council's chambers at 6pm on 29 May is free but people should register via [ThomasMayoSurfCoast.eventbrite.com](https://www.thomasmayosurfcoast.eventbrite.com)

The presentation will be followed by an audience Q&A, and book sales and signing.

Thomas Mayo is the author of several books, including Finding the Heart of the Nation – The Journey of the Uluru Statement Towards Voice, Treaty and Truth and his most recent is The Voice to Parliament Handbook, co-authored with journalist Kerry O'Brien.

To celebrate National Reconciliation Week, Surf Coast Shire Council is proud to present

## From the Heart - An evening with Thomas Mayo

### Monday 29 May, 6-7.30pm

Council Chambers, 1 Merrijig Drive Torquay

Surf Coast Shire Council is delighted to host author, advocate and campaigner Thomas Mayo as a special guest speaker to mark National Reconciliation Week 2023.

Thomas is a Kaurareg Aboriginal and Kalkagal, Erubamle Torres Strait Islander man. His most recent book is *The Voice to Parliament Handbook*, co-authored with journalist Kerry O'Brien.

For the past two years, Thomas has traveled the length and breadth of the nation, speaking to small communities and big city gatherings, playing a key role in building the people's movement for a constitutionally enshrined First Nations Voice.

This keynote address will be followed by an audience Q&A. Book sales and signing will also be available at the event.

Book via Eventbrite: [ThomasMayoSurfCoast.eventbrite.com](https://www.thomasmayosurfcoast.eventbrite.com)



BE A VOICE FOR GENERATIONS







## Big (and small) ideas sought for Moriac and Winchelsea community plans

Local resident working groups in Moriac and Winchelsea are calling on everyone in their broader communities to submit ideas and aspirations for a three year Community Plan for each district.

Community planning brings residents together to explore what matters to people locally, identify common values, and form a shared vision for their community. With this as the basis, residents create a Community Plan that includes a clear list of goals, priorities and actions that community members themselves will act upon.

Since the beginning of this year, the Moriac and Winchelsea working groups have been creating tools such as surveys and postcards, as well as holding local events and gatherings, in a bid to encourage people to have input into what they want their towns and communities to look like, now and in the future. So far, more than 350 people have shared their thoughts through the survey, which calls for ideas both big and small.



This month, the groups will be holding community gatherings, where a summary of all the ideas and inputs gained in each community will be shared, and priorities identified by all in attendance.

“The Moriac Community Network is very excited to be having our community round tables and are looking forward to all of the wonderful ideas coming from our community surveys and postcards for our

next Community Plan,” says Kim Rowe, President of the Moriac Community Network.

The Winchelsea Big Community Conversation will be held on 19 May and the Moriac Community Round Tables on 24 May. All details, as well as links to the survey, can be found at [www.surfcoast.vic.gov.au/CommunityPlanning](http://www.surfcoast.vic.gov.au/CommunityPlanning).

“I want to thank our incredible local working groups, who have drawn on their own skills, knowledge and connections to engage their communities about the future of Moriac and Winchelsea,” Surf Coast Shire Mayor Liz Pattison said.

“This is an exciting time for both townships and I’m looking forward to seeing the final plans that reflect the unique values of local people and places.”

Meanwhile, community members are invited to attend Surf Coast Shire Council’s 23 May Council meeting, which will be held in Winchelsea. The meeting will start at 6pm at Eastern Reserve Community Centre. The agenda will be published via [surfcoast.vic.gov.au](http://surfcoast.vic.gov.au)/meetings prior to the meeting.

# Get a smoke alarm this winter.

Lamp  
\$35

Desk chair  
\$125



The deadliest fires start when we’re sleeping. Install a smoke alarm in your bedroom, before it’s too late.





# Draft Budget 2023-24



You are invited to make a submission on Council's Draft Budget 2023-24

*"Delivering the essentials, striving for more community-led action and responding to the climate emergency underpins the Draft Budget 2023-24."*

*It's been challenging to develop this budget in the current economic climate, however we're pleased it features a record \$36.4 million capital expenditure program, which will help foster a thriving, healthy, connected community."*

Mayor Cr Liz Pattison



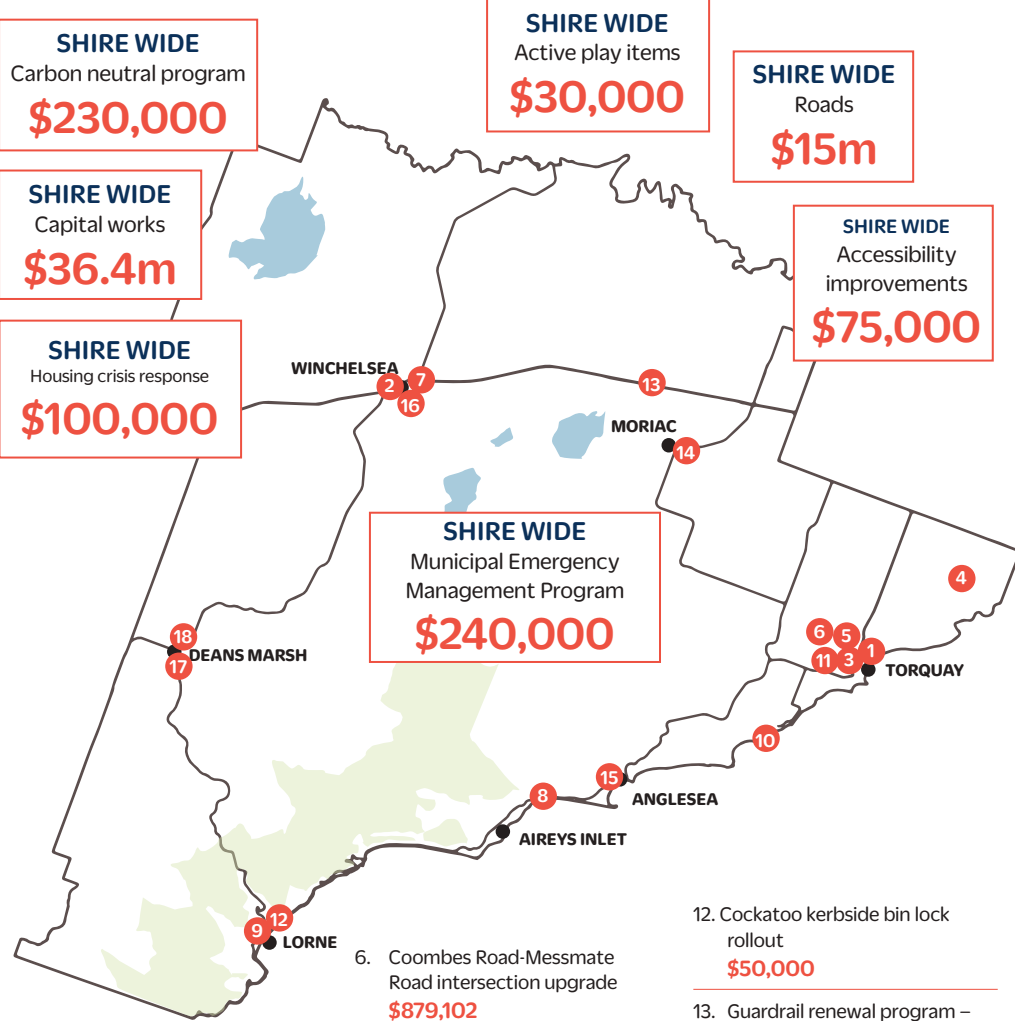
## Proposed rate increase

The draft budget includes a proposed rate increase of 3.5% in line with the Victorian Government rate cap. Each property in the Surf Coast Shire is revalued every year by independent professional valuers. Movements in property values can result in rate increases different to 3.5% for individual ratepayers; however, across the shire, the average rate increase will be 3.5% - well below current inflation levels.

We understand many residents are experiencing financial pressures so if you are, please reach out to us regarding a rates payment plan.

Our friendly teams are ready and able to help.

## A snapshot of projects and initiatives in the Draft Budget 2023-24



1. Surf Coast Aquatic and Health Centre  
**\$5,801,060**
2. Winchelsea Swimming Pool renewal  
**\$4,580,000**
3. Surf Coast Highway-Bristol Road intersection upgrade  
**\$2,665,814**
4. Karaaf Wetlands improvement works  
**\$2,000,000**
5. Construct pathways along Spring Creek and Deep Creek (Spring Creek pedestrian bridge and Ocean Views)  
**\$1,097,213**

6. Coombes Road-Messmate Road intersection upgrade  
**\$879,102**
7. Eastern Reserve netball courts renewal  
**\$318,000**
8. Anglesea Ward road renewal (location subject to further investigation)  
**\$303,000**
9. Stribling Reserve netball court renewal  
**\$162,000**
10. Traditional Owner engagement and cultural values assessment – Urban Futures Strategy  
**\$80,000**
11. Regional bike route along Great Ocean Road – Duffields Road to Strathmore Drive  
**\$66,275**

12. Cockatoo kerbside bin lock rollout  
**\$50,000**
13. Guardrail renewal program – two sections of Cape Otway Road  
**\$49,000**
14. Moriac Structure Plan – planning scheme amendment implementation  
**\$45,000**
15. Anglesea Art Space  
**\$33,300**
16. Winchelsea Tree Planting Program  
**\$22,500**
17. Bridge Renewal Program – Barrier Risk Assessments  
**\$4,500**
18. Deans Marsh Recreation Reserve gate renewal  
**\$1,200**



**FAST FACTS**

Population  
**37,694**

Child and Family Health  
infant enrolments  
**408**

Library memberships  
**10,500**

Childhood and school  
immunisations  
**1,800**

Volunteers supported  
**291**

Customer requests  
**45,000**

Playgrounds maintained  
**57**

Dog and cat registrations  
**7,608**

Food premises inspections  
**600**

Kilometres of gravel roads  
graded  
**1,422**

Australian National Surfing  
Museum visitors

**16,500**

Households receiving  
kerbside waste services  
**21,101**



**Diving deeper into our renewal program**

After making a splash for 60 years, the Winchelsea Pool was farewelled by locals in March. The treasured facility will return with a much-needed revamp – an \$8.5 million project, which will foster a healthy, connected community for Winchelsea residents and visitors for years.

Given the major cost of this pool, we need to press pause on renewing a number of our other ageing assets – from roads and pathways, to buildings and recreation. They remain safe and useful, but we'll time their renewal in future years based on condition.

We want to maintain existing assets to the standard residents expect, but rising construction costs are constraining our capacity to tackle a wide variety of projects.

We also time capital projects to funding opportunities, such as state and federal government election cycles. It's what we've done with the Surf Coast Aquatic and Health Centre, which has a further \$5.8 million allocation in this Draft Budget and will service community members from across the shire.

*"I live away from Winchelsea now but grew up there, and the pool was our summer go-to. Wonderful memories. I'd like to see current generations enjoy it like we did."*

Feedback received during the Winchelsea Pool revamp consultation.

**Preparing for growth and improving livability**

The Winchelsea Ward community is growing and the budget is supporting this growth.

Junior netball is thriving in Winchelsea, highlighted by three sides - including a premiership team - competing in the popular summer netball competition in Geelong.

With juniors progressing through the ranks, complementing the local club's senior teams, it's vital that the Eastern Reserve courts remain up to standard. A \$318,000 allocation will make this happen.

The netball courts are a facility that foster a healthy, connected community, along with the Winchelsea Pool and Winchelsea Leisuretime Centre. The leisuretime centre was handed back to Winchelsea Primary School in January 2023 following repair works by the Victorian School Building Authority supported by Council's \$119,045 investment.

We're pleased to see the centre up-and-running again for basketball games, school events and community gatherings.

**To view the Draft Budget 2023-24, visit [surfcoast.vic.gov.au/budget23-24](http://surfcoast.vic.gov.au/budget23-24)**

**HOW TO MAKE A SUBMISSION:**

Online: [surfcoast.vic.gov.au/Budget23-24](http://surfcoast.vic.gov.au/Budget23-24)

Write to: Chief Executive Officer, PO Box 350 Torquay VIC 3228

**SUBMISSIONS DEADLINE 10AM MONDAY 22 MAY 2023.**

Anyone making a submission can request to present to Council at a Hearing of Submissions, which will take place at 6pm on Tuesday 30 May 2023 online.

**NEED TO ACCESS A HARD COPY?**

We can print and post relevant sections of the budget to you. Call us on 5261 0600 or you can lodge a request via our website [surfcoast.vic.gov.au/request](http://surfcoast.vic.gov.au/request).



## For the love of animals

### Winchelsea Primary students making friends with farm animals

Dean Babb

On Friday the 12th of May we had a visit from Fun Farm 2 U.

Our junior students from Grade Prep 2 were lucky enough to get an up-close experience with a range of farm animals and poultry.

Each student was able to get to know the animals names, give them lots of pats and get a full five-sense experience!

Teachers will then use the Farm 2 U incursion as a platform for teaching and learning where the junior writers will generate and collect ideas based on the experience.

All of the students were fully engaged during the visit; here are a few of their thoughts on the day...

*"I loved all of the animals they were so cool. I was so excited to see them!"*  
– Luke

*"The goats were so cute and fluffy. I also liked the black rabbits"*  
– Ruby

*"The guinea pigs were my favourite. They were eating all of the hay and loved to try to hide from me!"*  
– Harry

*"The sheep and guinea pigs were the best. I give the visit a 10 out of 10!"*  
– Casey



## National Seniors Australia says seniors critical to implementation of Budget

National Seniors Australia welcomes cost of living relief provided in the 2023 budget.

This includes a \$40 increase to the base rate for the JobSeeker payment, a \$92.10 increase for JobSeekers aged 55-59, and a 15% increase to the maximum rate of rent assistance.

National Seniors called for an increase to rent assistance in its 2023 Budget Submission.

"Renters are more vulnerable to higher costs, lower living standards and homelessness. This increase will go

some way to help ease these pressures, particularly for older women who are most at risk," Chief Advocate Ian Henschke said.

"The one-off electricity subsidy up to \$500, more affordable medications and incentives for GPs to bulk bill will help.

"In good news for aged care, the government has funded the 15% pay increase for workers and there are 9,500 extra home care packages. However, National Seniors wonders where the workers will come from. Government could do more by capitalising on the

skills of older people.

"Older people are a critical part of the budget equation – not only in terms of what they need but how they can contribute."

Mr Henschke said the aged care sector would benefit from a dedicated training scheme to encourage mature aged people to deliver these new home care packages.

"Giving pensioners who are care workers an exemption from the income test would also go a long way to help retain desperately needed workers."



# Our Nurses. Our Future.

## International Nurses Day

This International Nurses Day, Hesse celebrated, recognised and embraced the importance of nurses in our health system, and their dedication to delivering person-centred care.

Hesse is proud of all of the nurses in our workforce and want to take the opportunity to introduce two of them:



**Leo – District Nurse**  
An inspiration to other male nurses

From a young age Leo was passionate about working in the medical industry. Completing his studies in China, he originally applied to be a doctor but as he didn't get the required scores, opted to become a male nurse. At that time in China male nurses were in high demand but faced many social challenges, as nursing was largely considered a female occupation.

Leo is proud to be a nurse. He loves helping improve people's health and likes being the advocate between a doctor and a patient.

**The theme for International Nurses day this year is our nurses, our future.** The future of nursing, to Leo is an increased nursing workforce, with hopefully more male nurses on board. All nurses should be held in good esteem as medical professionals and respected in the community accordingly. Leo would like to see improvements in the way male nurses are viewed in the industry, particularly across Asian nations.



**Emma Coverdale**  
RAC Ray of Sunshine

Emma has always been a very caring and compassionate person. From a young age, she had a love of caring for people when they need it most, particularly those who are vulnerable.

Nursing wasn't her first choice of a career. At one time Emma thought about being a police officer, however she didn't meet the height requirements. When she finished high school and considered her options for further study, nursing was one of those options which appealed to her so she tried it, and loved it.

Emma has now been nursing for 12 years and loves the challenge of being a nurse. Emma takes a very person centred care approach to nursing. Her philosophy is treating patients how she would want to be treated. She cares for her patients how she would want her family and loved ones cared for.

The highlight of being a nurse for Emma is putting a smile on people's faces, and making a positive difference in their life. Emma loves making people feel welcome, safe, happy and bringing a smile to their world, especially her patients with Dementia.

**The theme for International Nurses day this year is our nurses, our future.** Emma hopes the future of nursing means to continue to have a wonderful cohort of nurses, who are in this job for the right reason - making a difference in people's lives. The nursing industry is currently facing challenges with retention and recruitment, it would be good to see more caring nurses come on board who are person-centred. Nursing is more than blood pressure and wiping bottoms. Nurses need to be committed to making a difference in people's lives.

**direct**  
**TEMPORARY FENCING**  
FOR HIRE - SUPPLIED & ERECTED - 7 DAYS  
GEELONG - BELLARINE - COLAC - SURF COAST  
PHONE CAM 0417 310 800

**DownRyte Excavations**

- Excavations
- Drilling and Piling
- Rock Placement
- Tree and Stump Removal

Sean Hunwick  
Mobile: 0409 447 288  
Email: downryte@activ8.net.au

**Kyeema**  
Rural Fencing Pty. Ltd.  
Jason Armstrong & Jay Hawker  
1080 Prices Lane, Ombersley, Victoria, 3241  
0419 565085 (Jason)  
0416 585817 (Jay)  
kyeemafarm@kyeemafarm.com.au  
Also incorporating domestic and rural tree trimming services.



# Winchelsea Community House Inc.

A6247K ABN: 48 932 340 254

**A** 28 Hesse Street, Winchelsea, Vic. 3241

**P** (03) 5267 2028

**E** [manager@winchhouse.org.au](mailto:manager@winchhouse.org.au)

## Singing Group

When: Wed afternoons 4.45-5.45pm  
Winchelsea Shire Hall Space  
\$5 per session Under 16 Free  
Commencing: Wed 26th April, 2023  
Bookings now open via email to  
[reception@winchhouse.org.au](mailto:reception@winchhouse.org.au)

## Experienced Tai Chi

When: Friday mornings 9.30-10.30am  
Winchelsea Community House Space  
\$90 for 9 week term program  
Commencing Friday 28th April, 2023  
Bookings now open via email to  
[reception@winchhouse.org.au](mailto:reception@winchhouse.org.au)

## Knitting Group

Come along and learn to knit or bring your knitting project and come and chat with others.

When: Thursday mornings 10-12 noon  
Winchelsea Community House  
Commencing: Thurs 27th April, 2023

## WYLD Youth Group

More information coming early in Term 2! Stay Tuned.

## Crochet Group

When: Alternate Sat afternoons 1.30pm  
Winchelsea Community House Space  
\$5 per session  
Commencing: Sat 22nd April, 2023

## Art Classes - Drawing

When Tues 2 May– 20 June 2023  
1-3pm  
Winchelsea Shire Hall Space

Term 2, 8 classes \$440

Payment in Full Required

\*Missed classes can be claimed toward Term 3 or refunded provided 24 hrs notice given in advance.

All materials included.

Media: including ink, charcoal, conte, pencils and pastels, technical drawing instructions, relax through an explorative and enjoyable approach.

Suitability: All levels of experience and abilities. Technically informative, providing skills, individuals progress in preferred direction.

Bookings and enquiries now open via email [Hinterlandartschool@gmail.com](mailto:Hinterlandartschool@gmail.com)  
PH: 0493 479 447

## Art Classes - Painting

When Thurs 27 April– 22 June 1-3pm

Winchelsea Shire Hall Space

Term 2, 9 classes \$585

Payment in Full Required

\*Missed classes can be claimed toward Term 3 or refunded provided 24hrs notice given in advance.

A class that progresses through water-based mediums, to the use of oil paint, with a dual focus on subject matter and materials.

Suitability: All levels of experience and abilities. Technically informative, providing skills, individuals progress in preferred direction.

Bookings and enquiries now open via email [Hinterlandartschool@gmail.com](mailto:Hinterlandartschool@gmail.com)  
PH: 0493 479 447

## Yoga Flow Classes

When: Every Thursday evening throughout May 7.00pm-8.00pm  
Winchelsea Shire Hall Space  
\$22 per class or \$80 for 4 classes  
BYO Yoga Mat  
Bookings essential  
Text or call Alex on 0400930495

## Sound Healing Sessions

When: Wednesday 17th May and Wednesday 14 June 7.30-8.30pm  
Winchelsea Shire Hall Space  
\$40 per session Bookings now open  
Please call Vicki on 0400 149 749

## Big Ideas

When: Friday 19th May and Friday 16th June, 2023  
Winchelsea Shire Hall Space  
Donation  
Big and small ideas discussed over a bowl of soup in the Shire Hall kitchen.  
Contact Richard Butcher  
[richard@studiobutcher.com](mailto:richard@studiobutcher.com)

## Chatty Cafe

When: Friday mornings 10-12 noon  
Winchelsea Shire Hall Space  
Coffee for sale \$3  
No Bookings required  
We will have our Chatty Café  
Volunteers present to welcome you!  
A place to sit, relax and chat.  
Chatting is such a simple concept but so important for mental and physical health.

## Shire Hall Pass

Vee Ascombe, Cromwell Hooper  
Acting Community Developers

Ahoy there! A burst of local activity that caught me by surprise just lately was the startling response to Chatty Cafe, a new but notable sub-sector of the community who have so swiftly established themselves as a vibrant expression of interest in and care for the community around them, that notable personages, (no names, no pack drill),

were wont to drop in to canvas public opinion. In a respectful and inclusive spirit, I heard diverse topics discussed through even more diverse opinions, and nursing my coffee I learnt more at Chatty Cafe over a couple of hours than I'd even suspect possible over the couple of years i've been settling in here so far, it just goes to show that even my big-smoke brain can learn a thing or few in the right company.

Chatty Cafe convenes at the Shire Hall on Fridays from 10 a.m. for a couple of

hours of light-hearted to more serious chats about anything and everything that concerns the community. Coffees, teas and occasionally snacks are provided and a donation tin is available. At times, barista-style coffee will be available for purchase for \$3. Some have only the time to race through for a quick hello on their way through other errands, and any participation is delightful for all involved, drop in next Friday before lunch and see what everybody's been talking about.





# Kitchen Makeover for Shire Hall

**Tony Phelps, Committee Chair**

Adding to the renovation of the main hall in the historic former Winchelsea Shire Hall building, Winchelsea Community House has upgraded the kitchen with a completely new central bench, a commercial dishwasher, and a commercial coffee machine.

This is a significant remodelling that greatly improves the potential uses for the space. Think community events involving food such as celebration occasions, pop-up foodie events such as pizza night or wine-tastings, publicity launches including snacks, and maybe even a coffee and cake service for casual public visitors and drop-ins. The facilities also allow hospitality courses to be run, offering real-world experience alongside hands-on learning. Your ideas on how the kitchen can be both used for community benefit and help with Winch House operating costs are very welcome.

The kitchen makeover was possible thanks to a combination of 3 grants for various components and aspects;

- State government funding by Regional Development Victoria, courtesy of the "Living Local Regional Community Grants Program" - \$13,600
- Foundation for Rural & Regional Renewal (FRRR) - \$9,000
- Our very own Winchelsea Star - \$16,000

Winch House Committee and staff are very grateful for these financial contributions without which the Shire Hall kitchen makeover would not have been possible - the new kitchen helps reactivate this important community space in the heart of Winchelsea. The project was undertaken by local builder Mitch Tudball of MGT Building & Construction, liaising with various subcontractors and Surf Coast Shire to handle the demolition, clear-up, rewiring, plumbing, cabinetry and all the other tasks. Our thanks to Mitch for taking good care of the project and getting it all done with minimal disturbance to the normal activities at Winch House.

The dishwasher now makes cleaning up after an event with catering a matter of minutes - stack the dirty dishes, pass



into the dishwasher for a minute and a half, push out the other side to dry - done! The commercial coffee machine includes all the equipment and startup supplies to allow Winch House to sell barista coffee, hot chocolate, and leaf tea. Along with other places in Winchelsea offering good coffee, we hope in time this will be another good reason for increasing numbers of people to either visit or stop in Winchelsea in the coming years.

You may already have seen that once a month, there's a Kitchen Conversations event - gathering around the central bench, discussing... whatever needs discussing. As mentioned above, the kitchen makes all sorts of activities, events and courses newly much easier and more convenient. Keep a look out for more of this sort of thing coming.

At the start of 2021, Surf Coast Shire

redecorated the main hall including removing a raised floor, replacing the carpet, painting the walls, electrical wiring repairs, and a wifi internet access point. The Shire Hall was then handed over to Winch House to operate (independently of Surf Coast Shire) with a 3-year financial package that allowed the recruitment of someone to manage, organise and promote the Hall as an extension of Winch House.

There's now 18 months to go for Winch House to establish financial sustainability for the Shire Hall space. Your thoughts and ideas on how this can be achieved are very much sought. Do you have a particular cuisine eg. South American you'd like to teach? A particular skill eg. making preserves & jams that you'd like to run a course for? Get in touch with Wendy and let's see if we can make it happen. Mon-Fri 9am-2pm, [reception@winchhouse.org.au](mailto:reception@winchhouse.org.au), or 03 5267 2028.

The Shire Hall space and its resources are available for community use depending on availability. Please note that fees and charges do apply in order to cover running costs and staffing. It is not a free facility, and it is not managed or run by Surf Coast Shire. Contact Jill at Winch House for more info - [shirehall@winchhouse.org.au](mailto:shirehall@winchhouse.org.au)



# Winchelsea Star

Articles are most welcome and must carry the name and address of the sender.

## Weekly deadline is 5pm Friday.

Copy for sports results and weekend events is Sunday 6pm (4pm for hard-copy articles/results left at IGA) unless by prior arrangement.

Copy should be emailed to [news@winchelseastar.org.au](mailto:news@winchelseastar.org.au) or left at IGA Supermarket.

The Winchelsea Star reserves the right to edit or not publish any article.

Views expressed are not necessarily those of the Winchelsea Star or its Committee.

500 online subscribers, 250 copies printed for outlets around Winchelsea.

Free subscription to digital version at [winchelseastar.org.au](http://winchelseastar.org.au)

© Winchelsea Star Org. Inc.  
All rights reserved.

Winchelsea Star Organisation Inc.  
Reg. No. A1479, ABN: 57 207 411 958  
[winchelseastar.org.au](http://winchelseastar.org.au)

Po Box 5, Winchelsea, Vic, 3241

### Editors:

Cerrie Fogan, Yvonne Stevens  
Judy Cameron  
[editor@winchelseastar.org.au](mailto:editor@winchelseastar.org.au)

### Advertising:

Sasha Gauntlett and Neil McInnes  
[advertising@winchelseastar.org.au](mailto:advertising@winchelseastar.org.au)  
0408 102 802

### Layout/Sub Editors:

Susan Corby, Stuart Fountain  
[production@winchelseastar.org.au](mailto:production@winchelseastar.org.au)

### Committee

**President:** Mick O'Mara  
[president@winchelseastar.org.au](mailto:president@winchelseastar.org.au)

**Treasurer:** Cathy Cheadle  
[treasurer@winchelseastar.org.au](mailto:treasurer@winchelseastar.org.au)

**Secretary:** Tony Phelps  
[secretary@winchelseastar.org.au](mailto:secretary@winchelseastar.org.au)

### Committee Members:

Linda Carter

Printer: Mud Group

Website: Winch Websites



## RSPCA: Quail hunting should be banned

RSPCA Victoria has publicly released its submission to the Select Committee on Victoria's Recreational Native Bird Hunting Arrangements after submissions to the inquiry closed last night.

Policy and Advocacy Manager at RSPCA Victoria, Ms Mhairi Roberts believes the submission makes a strong case for banning both duck and quail hunting in Victoria.

The critically endangered Plains Wanderer looks very similar to the Stubble Quail. There are very few features setting apart these species, and yet, the Plains Wanderer is near the brink of extinction. It is believed there may be fewer than 1,000 left in the wild [2].

"In addition to ingesting shot, it is possible that environmental lead exposure from missed shots contaminating the waterways and soil could be contributing



Left: Stubble Quail © Les George 2022 [birdlifephotography.org.au](http://birdlifephotography.org.au) to  
Right: Plains-wanderer © Ian Wilson 2023 [birdlifephotography.org.au](http://birdlifephotography.org.au)

"While many people understand the issues regarding ducks, quails often don't receive the same attention. Similar to ducks, the evidence very clearly supports banning Stubble Quail hunting. There are multiple concerns from an animal welfare perspective," said Ms Roberts. "When quail are shot with lead ammunition by hunters, deep punctures from gunshot wounds can result in damage to internal organs without causing immediate death of the bird.

"Unfortunately, there are no Australian studies that tell us what the wounding rate of Stubble Quail during quail hunting season is, but studies carried out on the Northern Bobwhite Quail (similar in size, colour and share a preferred habit) found 33% of the total kill were crippled.

"Utilising the total kill crippling rate from the more recent study, and the average Victorian Stubble quail harvest rate of 175,000[1], means that approximately another 57,000 quail are wounded and not killed outright each year," she said.

Quail hunters are not required to undergo species identification testing, which raises significant concern for several endangered species that look very similar

wildlife mortality by impeding the intricate cognitive processes and social behaviours essential for survival and reproductive success," said Ms Roberts.

RSPCA Victoria has provided the Select Committee with 12 recommendations in regard to duck and quail hunting. The key recommendations that relate to quail are below.

RSPCA Victoria recommendation 3: Based on the likely wounding rate of quail, RSPCA Victoria believes quail hunting should be banned due to the inevitable suffering of birds.

RSPCA Victoria recommendation 8: Quail hunting must be banned based on the decline in Stubble Quail numbers in Victoria and the additional pressures from hunting during the breeding season and habitat loss.

RSPCA Victoria recommendation 10: Due to the direct and indirect impacts of lead ammunition on native animals and the environment, and the continued use of lead shot illegally by duck hunters, duck and quail hunting should be banned.

For the full list of recommendations, visit the RSPCA Victoria website.





# Invitation

## The 2023 Upper Barwon Landcare Dinner & Annual General Meeting

**When** Monday May 29th 2023

**Where** Winchelsea Hub, Eastern Reserve 70 Hopkins St Winchelsea

**Program** 6 PM – pre dinner drinks (*drinks available at bar prices*)

6.30 PM – Annual General Meeting

7 PM – Dinner (Fusion catering) with Guest Speaker between courses  
(\$40 a head / pay on registration or by cash or card on the night)

**Guest Speaker:** Ray Draper



Growling Grass Frog

### Frogs and Toadlets of the Corangamite Catchment

Ray Draper is a local environmental consultant who has a passion for frogs and toadlets that are indigenous to our region. Ray will talk about species we can expect to see in our area and will talk about threats to their habitat and how we can work to ensure their survival.

**Bookings are essential and places are limited!**

Please RSVP by the **23rd of May** with any dietary requirements to the Upper Barwon Landcare Network on 0407552663 or [andrea.upperbarwonlandcare@gmail.com](mailto:andrea.upperbarwonlandcare@gmail.com)

**COMMUNITY MEMBERS WELCOME**



## Winchelsea Football Netball Club Inc

# Blues News

Janet Fletcher

Welcome to Blue's News as the 2023 Season progresses into Round 6 where the Winchelsea Blues hosted Geelong West Giants at Eastern Reserve last Saturday in beautiful autumn weather.

### RESERVES:

**Winchelsea Blues 6.12. 48 defeated Geelong West Giants 6.7.43**

In a low scoring game the Blues struggled to stay with their opposition in the first half of footy, both teams had their chances to break the game open but both failed to do so. A much better second quarter kept the Blues hopes alive.

To the Blues credit they came back strongly in the last quarter and were able to pinch the game with a last minute goal to take the 4 points. A gutsy win Blues, well done.

### GOALS:

Jarrold Winzer 4, Zedekai Copland 2.

### BEST:

Lachie Gemmill, Baxter Boddington, Jarrold Winzer, Zedekai Copland,

Darcy Looker, Matthew Gillespie.

### SENIORS:

**Winchelsea 9.6.60 were defeated by Geelong West Giants 13.7.85**

The Blues probably put in their worst half of football for the Season in the opening 2 quarters last Saturday kicking 1.2.8 to G.W.G. 3.2.20 in the first and 2.2.14 to 7.3.45 to go into the long break at half time.

The third quarter saw a revival from the Blues with some great work around the packs to take them at one stage of the game to be within 2 points, but the Giants had other ideas and kicked away to take the 4 points their way with a couple of late easy goals making the scoreboard more flattering as well.

### GOALS:

Indy Parish 2, Tom Henry 2, Tavae Saunie 2, Leigh Ellis, Fin Parish, Jonty Scott all 1 goal.

### BEST:

Adam Walsh, Jordan Huff, Luke Henry, Tom Moloney, Brenton Rees, Leigh Ellis.

This week the Blues travel to country cousins Anakie where they will be proudly showing their recently finished new facilities to all visiting Clubs which is great for them as the Anakie Football & Netball Club have waited a long time for an upgrade.

Starting times are 12pm for the Reserves and 2pm for the Seniors. It would be great to see as many Blues supporters as possible to make the trip and help secure a win after the last couple of games.

### JUNIOR FOOTBALL:

Numbers at Winchelsea Auskick have been terrific – it's still not too late to join in for the 2023 Auskick season - times are 5 – 6pm on Thursdays on the oval at Eastern Reserve.

Our bottom age Under 10 team continue to improve with every week they take to the field. I believe there were more goals kicked this week and while this fledgling team haven't cracked it for a win as yet the group are improving and enjoying their Saturday (and Friday night) games. Go Baby Blues !!

### AFS BOOKKEEPING



"Your local bookkeeper"

Bookkeeping  
Administration  
Payroll  
BAS Services  
Xero / Myob

Reckon / Quickbooks  
Registered BAS Agent

Angelique Snetselaar

0456 077 485

info@afsbookkeeping.com.au  
www.afsbookkeeping.com.au



### B & H Modifications Bob Verity

55 Stephenson Road  
Winchelsea 3241  
Ph: 5267 2467  
Mobile: 0411 610 678



### Industrial Sewing Machine Work

Caravan Annexes, Trailer Covers,  
Shade Sails, Alterations and  
Repairs to  
Camping and Tents.  
Clear PVC Blinds  
Repairs to CLEAN Horse Rugs  
No Job Too Small  
Email: bobverity@southernphone.com.au

### Antique Repairs

By **Doug Burns** est. 1976

- All Furniture
- French polishing
- Carving
- Veneering
- Wood Turning
- Porcelain



*Unusual Requests Welcome*

180 Barwon Terrace, Winchelsea

0428 672 704





# Winchelsea Football Netball Club Inc



L-R Neville Mawson, does the gate on match days for the Lions Club, son Scott is the Bar Manager, wife Cheryl helps with the catering and Scott's wife Ange is involved with the junior netballers, including coaching.

### THE BLUE'S BISTRO:

This week the menu features Seafood Baskets, Chicken Kiev, and the Winchelsea Blues Hamburger  
 All served with chips/vegetables/ salad  
 Non Members - \$20  
 Members - \$15  
 Small serve - \$12  
 Kids chips, nuggets & gravy still only \$5  
 DESSERT: - \$5  
 Ice cream - \$2

This week back by popular demand GOLDEN SYRUP DUMPLINGS, these are a limited item, order yours when

getting your main meal to avoid disappointment !

### VOLUNTEERS:

Auskick, Junior Footy, Blue's Bistro, Committee members, Bar staff, Canteen, Groundsman, Netball, Lines marking, Lions Club.

THESE VOLUNTEERS ARE WHAT KEEPS THE WINCHELSEA FOOTBALL & NETBALL CLUB TICKING OVER AND CONTINUE TO SURVIVE.  
 MORE HELP IS NEEDED AS THE TOWNSHIP AND CLUB GROWS:

Please consider if you think you can be of any assistance – that old adage of many hands make light work still rings true in this enlightened day & age !!

The W.F.N.C. Inc. is blessed with Life Members who care & contribute to the Club in many and varied ways, huge thanks .... you know who you are !

Happy Mother's Day to all Mothers last Sunday, hope everyone enjoyed the day in the beautiful weather

**GO BLUES!!**

# MRP Steelworx

@Matthew Partridge C  
 @0418672634C  
 @enrpsteelworx@yahoo.com.au

**Welding Service**

- Onsite welding
- Farm maintenance
- Farm machinery & equipment repairs
- Cattle & sheep yards
- Custom built trailers
- Supply & install gates

**NO MATTER WHAT YOUR PROBLEM, DODDS ELECTRIX CAN DEFUSE THE SITUATION.**

RURAL, INDUSTRIAL, COMMERCIAL. DOMESTIC  
 PHONE 0438 887 360  
 EMAIL: DODDSY@FASTMAIL.FM  
 PO BOX 36 BIRREGURRA, VICTORIA 324  
 REC: 17520 ABN: 64 581 250 880



**5234 6585 0417 385 984**  
 For all your domestic & stock water.  
 Also available for road and civil construction  
 Local owned and operated.

**OZ TREES NURSERY & TREE PLANTING SERVICES**

- Affordable seedlings—over 200 species
  - Complete plantation service—farm forestry, shelter, aesthetics
  - Deep ripping & mound ploughing. Rotary bed forming
  - Our experienced staff will help you select species for your site conditions and needs
- Also available—tree planting tools, milk cartons, plastic tree guards & bamboo stakes



569 Warrowie Rd. Colac  
 P: 5233 6280 F: 5233 6393  
 E: info@oztrees.com.au  
 W: www.oztrees.com.au  
 Open Monday—Friday  
 9am—4:30pm

Phone OzTrees for professional advice,

**TRENCHES & HOLES PTY LTD.**



**PHILLIP ROBERTSON**  
 ☎ 0427 672 945  
**WINCHELSEA**

- General Earth Works
- Driveways
- Trencher
- Kanga Loader
- Grader
- Excavator Work (3.5 & 6.5 Tonne)
- Tip Truck
- Rock Breaker
- Post Holes & Shed Footings

A.B.N 74006896898

**WINCH WEBSITES**  
 WEB SOLUTIONS SIMPLIFIED.

# WEBSITES

**GROW business  
 INCREASE reach  
 SAVE time**



**Find out what a website could do for you**  
[winchwebsites.com.au](http://winchwebsites.com.au)  
 04 887766 20

**CONCRETER**  
 Alister Aitken

**No job to big or small**

- Driveways - Carports - Crossovers - Footpaths - Sheds Slabs - Colored Concrete - Concrete sealing - Exposed Aggregate - & more -

**Call or text for a no obligation free quote**

**Servicing our local Winchelsea & Surrounding Areas**

alaitken.aa@gmail.com or Alister - 0411 871 950

A.B.N 47 228 574 460

**Knuckey's Winchelsea**  
 Ph: 5267 2011

Knuckey's have a complete range of batteries to suit tractor, heavy machinery, cars, utes

The largest range of the best oil for your vehicles—**CASTROL**—*'when only the best will do'*

The largest range of V belts.  
 A, B, C, D M Sections  
 Bolts and nuts for all occasions  
 Steel cut to size



# The Climate Report



Judy Cameron

It's official - Eastern Australia is facing the likelihood of a dry winter and spring. The US Climate Prediction Centre (CPC) is declaring an El Niño, the Pacific warm phase, as an above 90 per cent chance by August and indicated a greater than 50 per cent chance of a "strong" event by late in the year.

A "strong" El Niño is when Pacific Ocean water temperatures climb more than 1.5 degrees Celsius above average and has only occurred once previously in the past 25 years.

This continued warming of the equatorial Pacific along with a predicted burst of westerly winds, which could send the Pacific beyond the point of no return.

"The combination of a forecasted third westerly wind event in mid-late May, and high levels of above-average oceanic heat content, means that a potentially significant El Niño is on the horizon," stated the CPC.

The Australian Bureau of Meteorology (BOM) agrees this burst of westerlies could be the tipping point.

Cai Wenju, a senior CSIRO climate scientist, told Guardian Australia "When this El Niño comes, we are going to have much, much worse conditions in terms of heatwaves."

A typical El Niño might add about 0.1C to global mean temperatures but he warned the next one might top that "because there's so much heat in the equatorial Pacific".



Dr. Tom Daniel

If El Niño develops as expected the consequence will be a change in weather patterns across the globe. The typical impacts for Australia through winter and spring across roughly the eastern half of the country include:

- A reduction in rain, most pronounced over inland regions
- Warmer average maximum temperatures, apart from over north Queensland
- An increase in the frequency and intensity of extreme hot days
- An increase in winter frost over south-east states
- A decrease in winter snowfall
- Later monsoon onset and fewer tropical cyclones
- Heightened risk of bushfires, particularly over south-east states

What's concerning this year is modelling currently favours a dry signal from the Indian Ocean which will reinforce El Niño, and that combination in the past has led to some of eastern Australia's driest years on record, including 1982, 1994 and 2006.

Meanwhile the Hawaiian Energy Laboratory is aiming to produce energy by Thermal Energy Conversion using the difference between the cold deep ocean temperature and the warmer ocean surface to turn a turbine.

In the late 1970s the US Government funded a \$250 million series of experiments in Hawaii which aimed to do just that and it worked. While it was competitive in cost, the new Reagan Administration cut the project because it challenge the fossil fuel industries.

You can listen to Dr Tom Daniel explain the details in this 13-min interview: <https://www.youtube.com/watch?v=BD6leF9-lb4>

Dr Daniel also relates the work being done to grow a red algae, called asparagopsis, which can be fed to cows and has shown it can reduce their methane-rich burps by an incredible 70%. It is estimated that livestock, primarily cows, produce 40% of the world's methane emissions. Methane being 25 times more potent than carbon dioxide at trapping heat in the atmosphere. Over the last two centuries, methane concentrations in the atmosphere have more than doubled, largely due to human-related activities.

## VFF's Stock Sense is hosting a Livestock Producers workshop in Colac on Thursday 5th

Stock Sense is an extension project run by the Victorian Farmers Federation.

Our aim is to help livestock producers engage in best practices for animal welfare and on-farm biosecurity. Our workshops are free and we want to reach as many producers as we can!

Date and Time:

Thursday 1 June at 11:30am – 2pm

Location: Colac Neighbourhood House, 23 Miller St, Colac VIC 3250

We've organised for two speakers to come out:

**Michele Jolliffe** (DEECA Dairy Extension Officer) speaking on biosecurity planning, implications of diseases on farm, management of potential entry points for diseases and pests, FMD and LSD

**Tom Loughnan** (Colac Veterinary Clinic) will speak about colostrum management, calving preparation and mastitis and lameness

Registration is essential to help us with catering and capacity. To register, anyone can sign up here <https://zfrmz.com/BPJYZNUiCt2x0R57iXMD>

Link to Facebook event page <https://fb.me/e/3zAhLkU48>

Link to website

<https://www.vff.org.au/event/stock-sense-cattle-workshop-colac/>

# Winchelsea Churches



## Winchelsea

### Uniting Church

Hesse St, Winchelsea 3241  
uca.winchelsea@gmail.com  
0475 777 301  
Services 9.30am Sundays

### St John's Catholic Church

May Mass times: 5pm.  
May 6, 13, 20, 27  
Harding St, Winchelsea 3241  
Father Joseph Panackal  
0404598558

### St Thomas' Anglican Church

Barwon Tce, Winchelsea  
Rev'd A. Lynne Clarke  
stthomaswac@gmail.com  
0477 672 042



### Thought for the Week

"When you're troubled and worried and sick at heart and your plans are upset and your world falls apart. Remember God's ready and waiting to share the burden you find too heavy to bear."

John Bader,  
Accredited Lay Preacher

## St John's Catholic Church

During Autumn and Winter, Mass will be celebrated at 5pm on Saturday evenings at St John the Baptist Church, corner Mercer and Austin Streets, Winchelsea.

Adoration, Benediction and Reconciliation take place at 4pm followed by Mass at 5pm on the first Saturday of each month. (Next: 6 May)

Mass also takes place at Hesse Rural Health Service at 2pm on the fourth Thursday of each month. (Next: 27 April)

Parents wishing to have their child Baptised, please contact Anita 0409 432 833. Children can be Baptised at St John's Winchelsea.

Reconciliation/Anointing takes place before or after Mass. If you would like Mass offered for your loved ones, please let Father Joseph know on 52 681 230.

Father Joseph can be contacted on 52 681 230 or 0404 598 558 for a chat. The Parish Office is open 9.30 am - 4.30pm Wednesdays and Fridays.



St Vincent de Paul Society  
*good works*

Covering Meredith, Bannockburn,  
Anakie, Lethbridge, Inverleigh,  
Teesdale, Shelford,  
Elaine and Winchelsea

# 52219170

Monday - Friday 9am to 2 pm

<http://www.vinnies.org.au>

A caring Catholic  
organisation offering  
"a hand up" to all people  
in need.

## Winchelsea Hospital Auxiliary Op Shop

### DONATIONS

We are now accepting donations

### Donation days

Sat 10 - 2. Mon 10 - 2.

### SALES

\$5 bag of books.

Half price DVD's and CD's.

\$1 per item on selected clothing.

### OP SHOP HOURS

Friday to Monday 10am to 3pm.

**IF THE FLAGS ARE OUT  
WE ARE OPEN**



mainly music  
est. 1990

Fun, Interactive music sessions for  
pre-school children (0-4 y.o.) and  
parents/caregivers

**When:** Mondays from 10 to 11 am  
(runs during school terms)

**Where:** St Thomas' Hall

25 Barwon Tce.

To Enquire ring: 0407838256

## Women's Workshop

**Wednesdays 2:00 to 4:30pm.**

Learn practical home  
maintenance skills.

Learn basic woodworking  
design & construction  
techniques and hand tool use.

Discuss your ideas/needs with us.

SMS Stuart - 0468 358 282 at the  
Winchelsea Men's Shed

email: winchmenshed@gmail.com

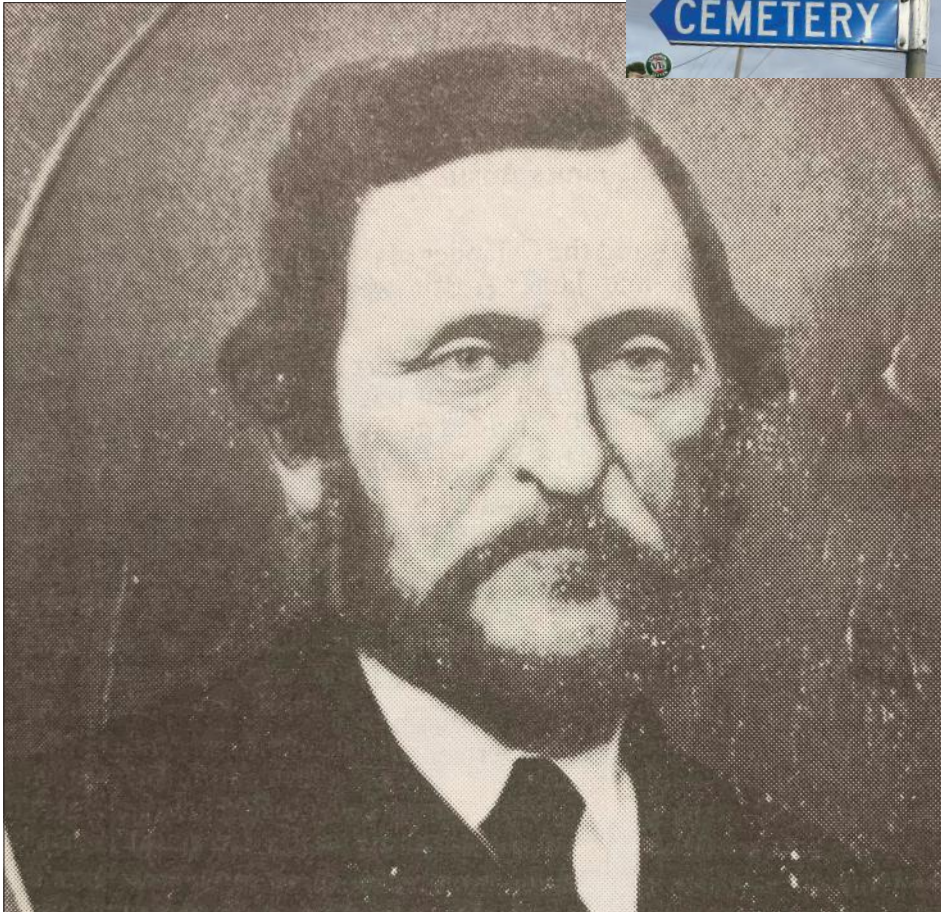


# Winchelsea Street Names

## Winchelsea Historical Society

### AUSTIN STREET

The Austin family were a very well known family in Winchelsea and built Barwon Park Mansion, later owned by the Batson family, and now by the National Trust.



# World Bee Day



## Farmers' markets shine yellow to support ag's hardest little workers

Farmers' markets across the country are preparing for a buzzy week as farmers, food producers and shoppers don their favourite yellow garb to celebrate World Bee Day on 20 May, 2023.

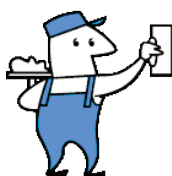
This year's World Bee Day theme is 'Bee engaged in pollinator-friendly agriculture', and there's no better way for people to celebrate than to join the Bring Your Buzz campaign, wearing yellow to their local farmers' market to highlight the vital role pollinators play in our food production systems.

Australian Farmers' Markets Association Chairperson Jane Adams says markets across the country are excited to support World Bee Day 2023 with its global theme highlighting pollinator-friendly agriculture, with festivities running at farmers' markets across the country from Saturday 13 May to Sunday 21 May.

## Plasterer & Painter

Daryl Hecker

Domestic & Commercial  
Renovations & Repairs  
Suspended Ceilings  
Dustless Sanding  
New Homes  
Extensions



Ph 0419 194 799

## Winchelsea Men's Shed



For The Community

51 Hesse Street

Every Wednesday from 9:30am

New members always welcome

For more detail contact:  
Ray Atkinson (Co-ordinator)  
0407 839 139

or  
winchmensed@gmail.com

Need a job done?  
Woodworking jobs,  
furniture repairs, small jobs.  
Drop in and talk to us.



Winchelsea  
Supermarket

Trading Hours

**Monday to Saturday**

8.30am to 7.30pm

**Sunday**

10am to 7pm

**Ph: 5267 2676**

29 Main St, Winchelsea





*All About* **Mowers & Chainsaws**  
 Repairs to all makes and models of ride on mowers, domestic mowers, pumps, chainsaws, brushcutters and small engines.  
 Trading Hours: Mon - Fri 8am - 5pm Saturday 8am - 12 noon  
**5267 2266** Cnr Princes Hwy & Lennox St Winchelsea  
 www.allaboutmowers.com.au  
 accounts@allaboutmowers.com.au

FERRIS CDX STIHL BRIGGS & STRATTON VICTA

**Simco Plumbing and Gasfitting**  
 24/7 Emergency service Ph:0400643976

- All General Plumbing and Gasfitting
- Roof and Gutters, Hot Water service changeover
- Split Systems, Air Conditioning and Wood Heaters
- Irrigation, Septic and Treatment plants
- Excavation, Bobcat and Tipper
- Rain water Tank installation
- Renovations and Extensions
- Gas conversions and servicing

Simon McGillivray  
 Lic: I09610. Free quotes, Fast and friendly service

**Water Delivery**  
**WAZZA'S WATER CARTAGE**  
 Stainless Tanker Up to 22,000 ltr loads  
 Barwon Water Registered  
**Domestic & Rural Water Supplies**

Call Wazza  
 Mob: 0428 877 260  
 Email: wazza@wazzas.com.au Web: wazzaswater.com


**Scott McDonald**  
**0423 413 829**

**S.J.R AUTOMOTIVE**  
 A&M 842 A&B 846 848 849  
 13 ALSOP DRIVE, WINCHELSEA VIC 3841

**SOUTHERN GRAIN STORAGE PTY. LTD.**  
 AG SUPPLIES FERTILISER GRAIN STORAGE SEED CLEANING  
**(03) 5267 2351**

**STS ACCOUNTING GROUP**  
**Your Taxation & Superannuation Specialists.**  
 Winchelsea  
**5267 2673**  
 www.surftax.com.au

**DAVIC AG**  
**CONTRACTING AND EARTHMOVING**  
 For all your harvesting needs  
 Mowing, raking, round bailing, paddock prepping, spreading and sowing  
 Call Dave on **0417 579 973** Bambra

 **Café La Hoot**  
 have you tried 'owl' coffee?  
 1 willis st cafelahoo@gmail.com 0407 528 999





## DANCE

This Months dance will be held in the Wurdale Hall 220 Wurdale Road Wurdale.

Dance will start at 8pm till 11.30pm, Cost is \$10.00, supper provided, raffle and door prize.

Charles Pedder providing the Music.



## FREE WARDROBES

2 Timber free- standing wardrobes.  
One with shelving.  
Suitable for workshop storage.

Contact. Ph 0409418766

## COVID-19 Weekly Data

There were 7,594 COVID-19 cases reported in Victoria this week, an increase of 18 per cent on the previous week. The average daily number of new cases this week was 1,085, up from 922 last week.

### Steps to protect yourself and others

Protecting yourself from getting infected is the best way to protect yourself and the community. If you don't get Covid, you can't spread Covid.

### 2023 boosters

Eligible Victorians who have not had a Covid vaccination or confirmed infection in the past six months can now receive their 2023 booster. This is irrespective of how many prior doses a person has received. Vaccination continues to provide the best protection against becoming severely unwell or dying from Covid.

For those not infected or vaccinated in the past six months, a 2023 booster is recommended for:

- All adults aged 65 years and over
- Adults 18-64 years who have medical comorbidities or disability with significant or complex health needs.

- For those not infected or vaccinated in the past six months, a 2023 booster should be considered for:
- Adults 18-64 with no risk factors for severe Covid
- Children and adolescents aged 5-17 who have medical comorbidities or disability with significant or complex health needs.

Victorians are encouraged to book a free booster appointment through their local GP or pharmacy. You can find your nearest vaccination provider through the Health Direct Service Finder.

### RATs available through local councils

All Victorians are eligible to pick up two free packets of rapid antigen tests (RATs) through their local council.

The council RAT distribution program is currently operating across more than 400 local sites, such as libraries and council customer service centres. The program is open to all Victorians, with all eligibility requirements now removed.

Individuals can collect up to two packets for themselves plus up to two packets for

each household member per visit, while people with a disability or their carer can collect up to four packets of tests.

Testing, especially with any compatible Covid symptoms, is critical to help with early detection and to protect others. It also allows for appropriate care and timely treatment.

Contact details for participating councils can be found at the Coronavirus website.

### Antivirals and other medicines

Oral antiviral medications remain highly effective against all currently circulating Covid subvariants to reduce severe disease and prevent death.

From 1 April, people aged 60-69 with one additional risk factor for developing severe disease are eligible for antiviral treatments.

Early testing for Covid and diagnosis are essential to access Covid medicines. For most Covid medicines to work best, you must take it within five days of getting sick – the earlier the better.

Information on eligibility can be found at the Coronavirus website.

# Services and Activities in Winchelsea

## Free Community Service Advertisements



### TRAIN SERVICES

#### To Geelong

Mon - Fri

6:41 am, 7:59am, 11:34am,  
2:01pm, 7:37pm

Sat and Sun

9:35am, 1:36pm, 7:18pm

#### To Warrnambool:

Mon - Fri

9:29am, 2:56pm, (to Colac  
5:27pm), 6:45pm, 8:53pm

Sat and Sun

8:47am, 2:49pm, 8:37pm

### Country Women's Association



7pm Second Wednesday of Month  
Winchelsea Senior Citizens' Hall

### Bus to the Hub

For reservations on the weekly bus  
to the Eastern Reserve Hub,  
please phone 52671202.

### Surf Coast Mobile Library

Surf Coast Mobile Library  
parked in Hesse Street  
(outside Shire Hall) on Fridays  
between 2:00 and 5:00pm  
unless it is a Public Holiday.  
**Hesse St, Fridays, 2pm-5pm**

### Winchelsea Taxi

0429 672 888 or  
5267 2888

Wheelchair accessible  
10 seater bus available.

### Winchelsea SES

Meeting and training  
2nd Wednesday  
Training 4th Wednesday  
Visitors and inquiries welcome  
0408 102 802



### Winchelsea and District Combined Probus Club

Meets 1st Monday of the month  
at 10am. Senior Citizens Rooms,  
Harding St, Winchelsea.

New members always welcome.  
Enquiries Linda 0439 817 263.

### Winchelsea Playgroup

Every second Thursday 10am-12pm  
St Thomas Anglican Church Hall  
cnr Barwon Tce and Hopkins St, Winchelsea  
Contact: Melissa 0456181268  
Facebook - Winchelsea Playgroup 2019  
**New families welcome**

### Winchelsea Girl Guides

Our Unit meets at the Catholic Church  
Hall, Harding St Winchelsea  
each Monday 4.30pm-6pm  
All girls 5yrs- 15yrs Welcome!  
Contact Yvonne Orchard 0448 672 630  
or Bonnie Stokes 0401 386 274

### 1st Modewarre and Winchelsea Scout Group

**Joey's:** Tuesdays of school term 5-6pm  
**Cubs:** Mondays of school term 6:30-8pm  
**Scouts:** Tuesdays of school term  
6:30-8:30pm

All at Modewarre Hall, Cape Otway Rd  
**Venturers:** Wed at Walton's Rd Venturer Den  
Contact Marie McPadden 0409 330147

### Winchelsea Transfer Station

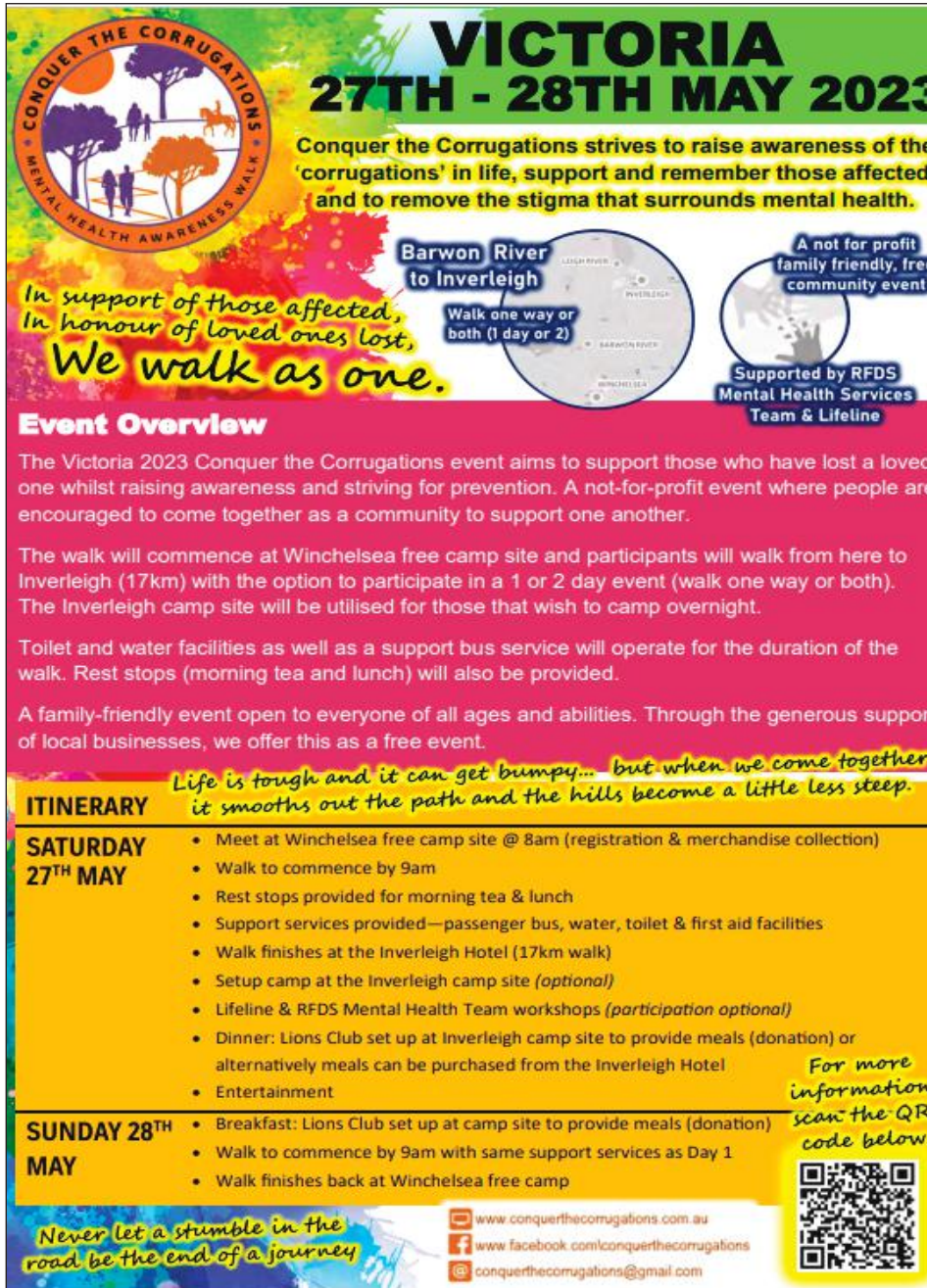
#### Opening Hours

Monday	Closed
Tuesday	2pm-4pm
Wednesday	Closed
Thursday	2pm - 4pm
Friday	Closed
Saturday	1.30pm - 3.30pm
Sunday	9.30am - 12.30pm

**55 Cressy Road, Winchelsea.**

Accepts household garbage,  
mixed commercial and industrial waste,  
mixed construction and demolition  
waste. Accepts recyclable materials.  
Accepts one recycle bin two waste bins.  
Does NOT accept clean fill.





**VICTORIA**  
**27TH - 28TH MAY 2023**

Conquer the Corrugations strives to raise awareness of the 'corrugations' in life, support and remember those affected and to remove the stigma that surrounds mental health.

**Barwon River to Inverleigh**  
Walk one way or both (1 day or 2)

A not for profit family friendly, free community event

Supported by RFDS Mental Health Services Team & Lifeline

*In support of those affected, In honour of loved ones lost, We walk as one.*

**Event Overview**

The Victoria 2023 Conquer the Corrugations event aims to support those who have lost a loved one whilst raising awareness and striving for prevention. A not-for-profit event where people are encouraged to come together as a community to support one another.

The walk will commence at Winchelsea free camp site and participants will walk from here to Inverleigh (17km) with the option to participate in a 1 or 2 day event (walk one way or both). The Inverleigh camp site will be utilised for those that wish to camp overnight.

Toilet and water facilities as well as a support bus service will operate for the duration of the walk. Rest stops (morning tea and lunch) will also be provided.

A family-friendly event open to everyone of all ages and abilities. Through the generous support of local businesses, we offer this as a free event.

*Life is tough and it can get bumpy... but when we come together it smooths out the path and the hills become a little less steep.*

**ITINERARY**

**SATURDAY 27TH MAY**

- Meet at Winchelsea free camp site @ 8am (registration & merchandise collection)
- Walk to commence by 9am
- Rest stops provided for morning tea & lunch
- Support services provided—passenger bus, water, toilet & first aid facilities
- Walk finishes at the Inverleigh Hotel (17km walk)
- Setup camp at the Inverleigh camp site (optional)
- Lifeline & RFDS Mental Health Team workshops (participation optional)
- Dinner: Lions Club set up at Inverleigh camp site to provide meals (donation) or alternatively meals can be purchased from the Inverleigh Hotel
- Entertainment


**SUNDAY 28TH MAY**

- Breakfast: Lions Club set up at camp site to provide meals (donation)
- Walk to commence by 9am with same support services as Day 1
- Walk finishes back at Winchelsea free camp

*Never let a stumble in the road be the end of a journey*

www.conquerthecorrugations.com.au  
www.facebook.com/conquerthecorrugations  
conquerthecorrugations@gmail.com

For more information scan the QR code below



# Conquer the Corrugations

## May 27-28 2023

Life is tough and it can get bumpy ... but when we come together it smooths out the path and the hills become a little less steep.

Join us on our first walk to raise awareness and support those affected by mental health.

Winchelsea to Inverleigh and return with an optional overnight camp.

Bus transport available, so join us for any stage of the event.

Register online and get more info through our Facebook page: conquerthecorrugations-vic OR the Lifeline website.

Free event open to all ages and abilities.

A fun free weekend with a powerful message.

52672192 **R & K Creative Framing**  
for all your framing needs

free quotes  
pension discount  
specialist in Age & Disability Modifications

Ray & Kim Jansen  
10 Witcombe st  
Winchelsea 3241

Ray The Home Maintenance HANDYMAN  
abn 47928823462

0414672192

Winchelsea Community Market

Shine Hall  
9am - 1pm



**MARKET dates for 2023**

1 <sup>st</sup> January	2 <sup>nd</sup> July
5 <sup>th</sup> February	6 <sup>th</sup> August
5 <sup>th</sup> March	3 <sup>rd</sup> September
2 <sup>nd</sup> April	8 <sup>th</sup> October
7 <sup>th</sup> May	5 <sup>th</sup> November

**WINCHELSEA CONCRETING**

• Driveways • Sheds • Decorative Concrete • Raft Slabs

**Robert Murphy**  
☎ 0438 235 237  
✉ winchelseaconcreting@outlook.com



## Winchelsea Community Facebook pages

### What's on in Winchelsea

**FLYERS, LOCAL EVENTS,  
SMALL BUSINESS,  
PROMOTING WINCHELSEA**

facebook.com/WhatsoninWinchelsea

### Winchelsea FREE

FREE ONLY

facebook.com/groups/winchelseafree

### Winchelsea Community Information AUSTRALIA

POSITIVE DISCUSSION

facebook.com/  
groups/207538644446972

### Winchelsea Classifieds 3241

FOR SALE ONLY

facebook.com/  
groups/216942861684082

### Winchelsea Lost and Found

LOST PETS

facebook.com/  
groups/768187693217518

### Winchelsea Op Shop

facebook.com/  
HospitalAuxiliaryOpShopWinchelsea

### Winchelsea Shire Hall (Community Centre)

facebook.com/WinchelseaShireHall

### Winchelsea Community House

facebook.com/  
winchelseacommunityhouse

### Winchelsea Coronavirus Community Support Group

facebook.com/  
groups/2676957719207927/

### The Green Winchelsea Residents

facebook.com/  
groups/515322772623126

### Growing Winchelsea Inc

facebook.com/growingwinch

### Winchelsea Star

facebook.com/TheWinchelseaStar

### Winchelsea Movie Club

facebook.com/winchelseamovies

### Winchelsea Community Market

facebook.com/100083362387611

### Winchelsea Land and River Care Group

facebook.com/envirowinchelsea/

### Upper Barwon Landcare Network

facebook.com/UpperBarwonLandcare

### Winchelsea & District Historical Society Inc.

facebook.com/  
Winchelseaanddistricthistoricalsociety/

### Winchelsea Wildlife Shelter

www.winchelseawildlifeshelter.com/

### SCARS - Surf Coast Animal Rescue Service

facebook.com/groups/415211698950674

### Winchelsea Gardeners

facebook.com/  
groups/779878518703025

### Winchelsea & District Historical Society

facebook.com/  
Winchelseaanddistricthistoricalsociety/

### Winchelsea Repertory Society Inc

facebook.com/winchrep/

### Winchelsea Globe Theatre

facebook.com/Winchelsea-Globe-  
Theatre-164790897641678

### Winchelsea Uniting Church

facebook.com/winchelseaunitingchurch

### St Thomas' Anglican Church

facebook.com/StThomasWinchelsea

### St John the Baptist Catholic Church

facebook.com/pages/Winchelsea-  
Catholic-Church/101775670163180

### Winchelsea Mainly Music

facebook.com/  
groups/668500343953191/

### Winchelsea Health Club

facebook.com/WinchelseaHealthClub

### Winchelsea Playgroup 2019

facebook.com/  
groups/551663435367031

### Winchelsea Girl Guides

www.guidesvic.org.au/

### Winchelsea/Modewarre Scouts

facebook.com/1stModewarreScouts

### Winchelsea Fire Brigade

facebook.com/winchelseafirebrigade/

### Winchelsea SES

facebook.com/groups/WinchSES

### Country Women's Association - CWA Winchelsea Branch

facebook.com/pg/CWAWinchelsea/

### Winchelsea Bowls Club

facebook.com/Winchelsea-Bowls-  
Club-533783333344345/

### Winchelsea Blues Cricket Club

facebook.com/groups/8999049476/

### Winchelsea Blues FC

facebook.com/WinchelseaFNC/

### Mel's Dance Studio

facebook.com/melsdancecentral

### Winchelsea Golf Club

facebook.com/winchelseagc/  
facebook.com/  
groups/1324943804676697

### Winchelsea Kyokushin Karate Club

facebook.com/winchelseakyokushin

### WYLD Winchelsea Youth Leisure and Drop in

facebook.com/  
groups/569737570027065/

### Lions Club of Winchelsea

facebook.com/LionsWinchelsea

### Winchelsea Probus

facebook.com/893535194971083  
10am 1st Mon month at Sen Citz Hall







## Putting power back in your hands

Get \$250 in your pocket by visiting the Victorian Energy Compare website.

From 24 March, energy bill payers can claim \$250 even if they've claimed the Power Saving Bonus before.

Only one payment is available per household, per round.

We're bringing back the SEC to help drive down power bills.

 Visit [compare.energy.vic.gov.au](https://compare.energy.vic.gov.au)  
 Call 1800 000 832



For assistance in languages other than English, contact Translating and Interpreting Services (TIS) on 131 450.



You can only claim the \$250 bonus by visiting the Victorian Energy Compare website. If you receive any unsolicited calls about the bonus, they will not be from the Victorian Government.

Authorised by the Victorian Government, 1 Treasury Place, Melbourne.



# Council meeting in Winchelsea

A Council meeting will be held at Eastern Reserve Community Centre, 70 Hopkins St, Winchelsea at 6pm on Tuesday 23 May 2023.



The public is welcome to attend this meeting.

The agenda for this meeting will be posted prior to the meeting at [surfcoast.vic.gov.au/CouncilMeetings](http://surfcoast.vic.gov.au/CouncilMeetings).

You can live stream the meeting with live captions via the above website. A recording will be posted after the meeting. The recording will have captions and a transcript available.



## WINCHELSEA R.S.L



Winchelsea R.S.L invites you to attend R.S.L clubrooms First Sunday of each Month 1pm - 3pm To view the extensive records of local service men and women. Items of interest.

R.S.L clubrooms are located in 1914 - 1918 Memorial Grandstand At Winchelsea Football Club Main Entrance



admin@mirneeelectricalsolutions.com

Angus Leigh: 0484139858

'THE ELECTRICAL EXPERTS'

**MIRNEE**  
ELECTRICAL SOLUTIONS  
COMMERCIAL | DOMESTIC | INDUSTRIAL

## MAKE'N'BREAK MOSAICS

Based in Gherang



Workshops & Private Classes

Learn how to seal, cut, lay tiles & glass and grout

Pick a design from Donna or bring your own!

Call or Email Donna

0414 945 364  
make.n.break@outlook.com



5234 6585 0417 385 984  
For all your septic tank, grease traps and interceptor pits servicing.  
Locally owned and operated





### Winchelsea Land and Rivercare

First Saturday of the month.  
9am – 10.30am June 3<sup>rd</sup>

Meet at Guye Reserve, Barwon Terrace



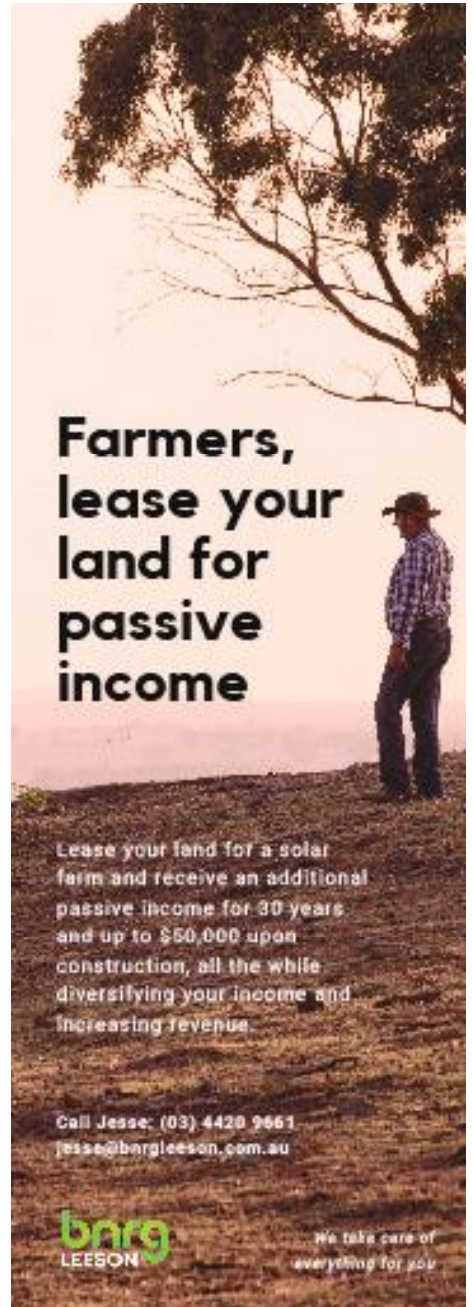

## 2023 DANCE ENROLMENTS NOW OPEN!

Winchelsea dance classes commence 1st February 2023

**REGISTER NOW**

[www.melsdancecentral.com.au](http://www.melsdancecentral.com.au)

Pre-School - Adults  
Beginner - Advanced Levels



## Farmers, lease your land for passive income

Lease your land for a solar farm and receive an additional passive income for 30 years and up to \$50,000 upon construction, all the while diversifying your income and increasing revenue.

Call Jesse: (03) 4420 9661  
jesse@bargleeson.com.au

**barg LEESON** We take care of everything for you

## Winchelsea Taxis is now Surfcoast Taxis

Our fleet of vehicles are growing to all late models and we are covering an extended area including Winchelsea, Colac, Bannockburn, Inverleigh, Great Ocean Road and Geelong.  
We have a fleet of 10 seater Maxi Vans, all with capacity to carry wheelchairs.

**Surfcoast Taxis Pty Ltd**  
All Bookings: 0408 325 992  
Fax: 5267 2699  
Email: [bannotaxis@gmail.com](mailto:bannotaxis@gmail.com)  
(Admin or Stan 0429 672 888)  
66A Batson Street  
Winchelsea 3241



Accounts NDIS provider. TAC, DVA etc

NDIS provider number 4050001044  
NDIS provider number 4050001048



Book your next ride with **smarHAIL**

Book Track Pay Rate

Download on the App Store GET IT ON Google Play



### SIMPLE STORAGE SOLUTIONS

- Personal & Business Storage
- Boat, Caravan & Vehicle Storage
- High Security Premises
- Individually Alarmed Units
- Electric Gate Access
- 7 Day Access & CCTV

### YOUR STORAGE PROBLEMS SOLVED

**5267 3116**  
6 ALSOP DRIVE, WINCHELSEA 3241



# Refinance, renovate or just re-evaluate

With interest rates on the rise, there's never been a better time to review your home loan.

Enquire online at [bendigobank.com.au/healthcheck](http://bendigobank.com.au/healthcheck) or call your nearest branch on 03 5289 1787.

Community Bank · Winchelsea & District

## Bendigo Bank

\*Roy Morgan Single Source (Australia), December 2022. All loans are subject to the bank's normal lending criteria. Fees, charges, terms and conditions apply. Please consider your situation and read the Terms and Conditions, available online at [www.bendigobank.com.au](http://www.bendigobank.com.au) or upon request from any Bendigo Bank branch, before making a decision. Bendigo and Adelaide Bank Limited ABN 11 068 648 178 AFSL 237875 | (67)6698-17349811 | (05)0231 0121\_29309270, 26104/2023

# RONNIE.

Winchelsea's pet groomer.

For appointments  
**0436 008 989**  
[tangopetgrooming@gmail.com](mailto:tangopetgrooming@gmail.com)

## GREAT Bundle Deal on Bosch Hot Water... FROM ELGAS

Buy any Bosch Bluetooth continuous flow hot water model - 16Litre, 20Litre or 26Litre and **Receive \$100\* in Elgas bonus LPG gas credits**

\*For more details: [www.elgas.com.au/appliances/bosch-cpflow-16-20-26-lpg-bundle-sale](http://www.elgas.com.au/appliances/bosch-cpflow-16-20-26-lpg-bundle-sale)

**AND... for new customers, an additional \$80 WORTH OF LPG GAS CREDITS\*\* when you open a new LPG Gas account with Elgas**

**NO CONTRACT TO SIGN**

\*\*Further details can be viewed at [www.elgas.com.au](http://www.elgas.com.au)

Ask about the Elgas Easy Payment Plan - 12 months interest free\*\*\* on selected LPG appliances

\*\*\*Further details can be viewed at: [www.elgas.com.au/epp](http://www.elgas.com.au/epp)

Automatic tanker gas bottle refill OR gas bottle exchange refill is available for home or business....  
Call today or visit our website for our many customer benefits and latest offers

**131 161** **ELGAS**  
[www.elgas.com.au](http://www.elgas.com.au)

# M&B WOOD PLUMBING

Call Matt - 0418 319 357  
[mbwoodplumbing.au](http://mbwoodplumbing.au)

**Servicing Winchelsea & surrounds**

- General maintenance & blocked drains
- Gas fitting & hot water service upgrades
- New homes & renovations

Commercial | Industrial | Domestic

# HAMILTONS

Truck & Bobcat Hire  
Give Aaron a Call  
**0438 438 623**

Chiropractic - Remedial Massage - Myotherapy - Sound Healing - Breathwork

## Chiropractic care for:

Stress & Anxiety	Pain Management
Body Aches & Tension	Family Wellbeing
Poor Sleep	Health Longevity

03 5267 2240 Shop 4/21 Hesse St Winchelsea <https://onebodychiropractic.com.au/>





eldersrealestate.com.au



## You're in Safe Hands With Peter Lindeman Delivering Exceptional Results for Over 20 Years

If you're thinking of selling a Rural or Lifestyle acreage property on the Bellarine, the Barwon or beyond then think Peter Lindeman. Peter spent 20 years managing farms before jumping the fence to sell them; and over the last 20 years he's helped clients achieve extraordinary results, more often than not surpassing their expectations. Why not let Peter show you how he can help you achieve an outstanding result for your property.

**Peter Lindeman**  
RURAL AND LIFESTYLE SALES MANAGER - ELDERS GEELONG



**P: 0418 525 609 E: peter.lindeman@elders.com.au**



### WARNOCOORT 12 TRASKS ROAD

★★★★★ **Seller review**

“ The sale of Kelowna was quick, painless and brilliantly handled by Peter Lindeman, from Elders Geelong, and we can't thank him enough. Peter came highly recommended, by a friend, and he certainly lived up to his impressive reputation. He's such a lovely chap. Easy to chat with. Has years of experience. And genuinely cares about his clients and buyers. Plus he turned a load of heritage quinces, from our orchard, into the most delicious jelly and paste. Is there no end to the man's talents! If you think you can't use an Agent from out of town, think again. We did. And we couldn't be happier. Elders are very lucky to have this Geelong Team! ”

★★★★★ **Buyer review**

“ Peter Lindeman was an absolute gentleman throughout the negotiation's for a property I recently purchased in the Western District. It was a difficult few days to get through but Peter was kind caring and honest! What more can you ask for from the agent when purchasing something that means so much to you. I'd like to take this opportunity to thank you sincerely Peter for helping me achieve my dream of owning this property that I have loved and held so dear to me since I was a small boy :- ) ”



### BARRABOOL 215 ANDERSONS ROAD

★★★★★ **Seller review**

“ Peter was our agent for a farm sale. We had engaged him with other transaction, and as with the others he did not disappoint. He gave us all he had to get us a great result. Having been in a large number of property transactions over the years he is unquestionably the best agent we have had. We couldn't recommend him highly enough. ”

★★★★★ **Buyer review**

“ We really couldn't say enough about how professional/helpful Peter Lindeman was during and after our search for a property in Victoria. We were very particular what we wanted and where; location is key! Peter Listened to what we wanted never wasted our time showing us properties that didn't fit our needs. Tricky negotiation, but thanks to Peter it all turned out very well. ”



**Breeze Health and Wellness, Exercise Physiology**  
**32-34 Main Street, Winchelsea (old post office)**  
 Chronic disease? Injured? Wanting improved athletic performance?  
 We can help you manage, rehabilitate and prevent many common ailments through movement.  
 Speak with your GP about a referral for a care plan.  
 Private health accepted - no referral needed.  
 Call Brenton on 0428 790 023 to discuss or email [breezehealthandwellness@gmail.com](mailto:breezehealthandwellness@gmail.com)  
 Exercise is Medicine, Motion is Lotion. Move with Ease at Breeze.

**Moriac Veterinary Clinic**  
**0447 781 089**  
**PHONE 24 HOURS**  
 784 Hendy Main Road Moriac  
[info@moriacvet.com](mailto:info@moriacvet.com)  
[www.moriacvetclinic.com.au](http://www.moriacvetclinic.com.au)  
**HOURS // Monday - Friday: 8am - 5pm**

**Aquafire Healing**  
 Transforming Your Health  
 Through the Healing Power of Nature  
**NATUROPATHIC MEDICINE • HERBAL MEDICINE**  
**NUTRITIONAL MEDICINE • HOMOEOPATHY**  
**REMEDIAL MASSAGE**  
[www.aquafirehealing.com](http://www.aquafirehealing.com)  
 Ph: 0415 530 276

**Located at 36 Main Street, Winchelsea 3241**  
 For any enquires or bookings please contact the clinic on 5292 8028.  
 Or visit our website: [www.winchmc.com.au](http://www.winchmc.com.au)  
Opening Hours:  
 Monday - Friday 8:00am - 5:00pm  
 (Monday Evening Clinics available and selected Saturdays)

Our clinic accepts online bookings via the app called HotDoc.  
 Download the app on the App Store or Google Play or head to our website.

**WINCHELSEA LIONS CLUB**

**PAPER RECYCLING**

**Paper depot rear of Senior Citizens Rooms Harding Street NEWSPAPERS, MAGAZINES, PHONE BOOKS WANTED**

**RAISING FUNDS FOR OUR TOWN & DISTRICT**  
**5267 2011 or 0408 520 606**

**Water Supply Specialists**  
**WATER SOLUTIONS**  
 74 Dennis Street, Colac  
 5231 1861

**ALL THINGS WATER:**  
 - PUMPS - PIPES  
 - FITTINGS - TANKS  
 - POOL CHEMICALS  
 - IRRIGATION  
 - WATER PURIFICATION  
 - SOLAR - REPAIR

**M & L DRAYTON**  
**PLUMBING SERVICES**

REG No 24356 C/A No C02594

- Domestic and Rural Plumbing
- Roofing
- Sewerage & Septic
- LPG & Natural Gas Connections
- Motorised Drain Cleaning
- Backhoe Hire

**Phone Mark 5288 7244**  
**PO BOX 98 WINCHELSEA 3241**  
**Mobile 0428 520 142**

- Domestic and Commercial hire equipment
- Industrial welding gas
- Digging and Earthmoving equipment
- New trailers and trailer repairs
- Firewood
- Stockists of Royal Oil Lubricants products
- LPG for domestic and commercial requirements

Give Chris and the Team a call on **5232 1177** or email [info@colachire.com.au](mailto:info@colachire.com.au)  
[www.colachire.com.au](http://www.colachire.com.au)  
**101 Wallace St Colac 3250**





- ❑ LOG BOOK SERVICE
- ❑ AUTO ELECTRICAL
- ❑ TOWING
- ❑ AIR CONDITIONING
- ❑ CLUTCH & BRAKES
- ❑ TYRES
- ❑ WHEEL ALIGNMENT
- ❑ BATTERIES

## CAR, TRUCK REPAIRS & Roadworthys

**PH: 5267 3001**

**Mob: 0417 137 457**



**Pixie Wash**  
 Mobile Doggie Care  
 Dogs up to 20kg  
**Pixie Heath**  
 0417 586 080

**Winchelsea Towing**  
 24 Hour Accident and Breakdown Towing  
**0418 535 402**



## NATURAL GAS CONNECTIONS

**M. & L DRAYTON**  
**PLUMBING SERVICES**

**YOUR LOCAL LICENSED**

- PLUMBERS (24356)
- GAS FITTERS
- GAS CONVERTERS
- CARBON MONOXIDE TESTING

**MARK 0428 520 142**

# R.A.K. DAVIS & SONS

## CARTAGE CONTRACTORS

**WINCHELSEA**

**SUPPLIER OF ALL QUARRY MATERIALS, TRUCK HIRE**

**CARTAGE OF GRAIN, LIME, GYPSUM & SUPER**

**LANDSCAPE & GARDEN SUPPLIES**

**56 WILLIS ST, WINCHELSEA**

**Ph – 5267 2094**

**Ryan – 0438 672 281**

**Email: rakdavis@bigpond.com**

## Funeral Planning

*Working out what is best for you.*

Prepaid Funerals, Funeral Bonds, Pay-by instalments...

There are many options and its important to make the right choice.

Alyson Burchell will be available by appointment to answer any questions about funerals and planning ahead.



For more information or to make an appointment contact Sue on 5221 4788

Tuckers Community Office,  
 Surf Coast Taxation Services, 22 Willis Street,  
 Winchelsea

**First Tuesday of the Month,  
 by appointment 10.00am - 12.00pm**

*Caring for families since 1883*

**Tuckers**  
 Funeral & Bereavement Service  
*...for a life worth celebrating*

5221 4788  
[www.tuckers.com.au](http://www.tuckers.com.au)

- All your caulking & waterproofing needs
  - Bathrooms (files, mirrors, vanities, bathtubs, shower)
  - Kitchens • Flooring (skirtings, tiles, floorboards)
  - Splash Backs • Pool Joints • Brick Work
  - Expansion Joints
- Phone/Text/Email: luke@westcoastsealants.com



**LUKE BATH**  
 CAULKING CONTRACTOR

0406 845 098  
[westcoastsealants.com](http://westcoastsealants.com)

PROVIDING QUALITY WORK SINCE 1995



# Lupton BUILDERS

SPECIALISING IN QUALITY

REGISTERED  
Building Practitioner

• NEW HOMES	• EXTENSIONS	• RENOVATIONS
• ALTERATIONS	• DECKS	• PERGOLAS
• CARPORTS	• VERANDAHS	• RE-GLADS
• BATHROOMS	• WINDOW REPLACEMENTS	

<p>LEIGH LUPTON 0438 840 104</p>	<p>CHRIS LUPTON 0407 681 514</p>
<p>LEIGHLUPTON17@GMAIL.COM <span style="float: right;">Est. 1977</span></p>	

# Winchelsea Star

Since 1977

ISSN 2202-6851



## HF RICHARDSON

PROPERTY

Servicing all your real estate needs

Ken McDonald **0418 524 150**

Residential | Rural Lifestyle | Agricultural Farms

CHARLES STEWART

rma network | Accredited Member

Charles Stewart & Company are leading livestock and real estate service providers covering Victoria's south west

	LIVESTOCK
Jamie McConachy	0418 522879
Peter McConachy	0408 522878
Matt Nelson	0428 315400
Gerard Bohan	0400 005541
Lachie Barclay	0438 346291
John Thornton	0408 526367
Dougal McIntyre	0439 575612
Ross Spilly	0419 539717
	REAL ESTATE
Michael Stewart	0418 520467
Daryl Osborne	0419 388341
Anthony McDonald	0418 593597
Gerard Bohan	0400 005541
Stephen Lugg	0417 556098
Josh Lamanna	0417 586032

Office  
56 Bromfield Street, Colac  
www.charlesstewart.com.au

Green Lead Electrical

Connecting you to a greener future  
REC 23618

0467 097 101

Servicing Geelong & the Surf Coast

Specialising in all residential electrical work including:

- Switch board & lighting upgrades
- Outdoor lighting
- Electrical safety checks
- Energy efficient LED lighting
- Ceiling sweep fans & ventilation
- Energy saving advice

Phone Martin Wilkinson:

0467 097 101

greenlead@outlook.com

132268-CG18-14

# MGT BUILDING & CONSTRUCTION

NEW HOMES | EXTENSIONS | RENOVATIONS
Ph: 0409 433 687